

020555

PETE TABBERT

"Rite in the Rain"
WEATHERPROOF®

a product of

J. L. DARLING CORPORATION

TACOMA, WASHINGTON 98421 U.S.A.

Opening of Ross River

1) ~~Ammon~~

2) ~~John S Brock W~~

Thru to Fort
Work Sell Car Less P P W

GEORGE KERR

~~X Bal Miller~~

B. J. J. J.

Lee Cargos

Wynn Hill

Marion Kyle

Wynn Hill

Wood Kyle

Sean Seesay O'Dell
CARIBBEAN
Y.T.

Brian O'Donnell

Vancouver BC

Kather P. Piquet
Ross River Y.T.

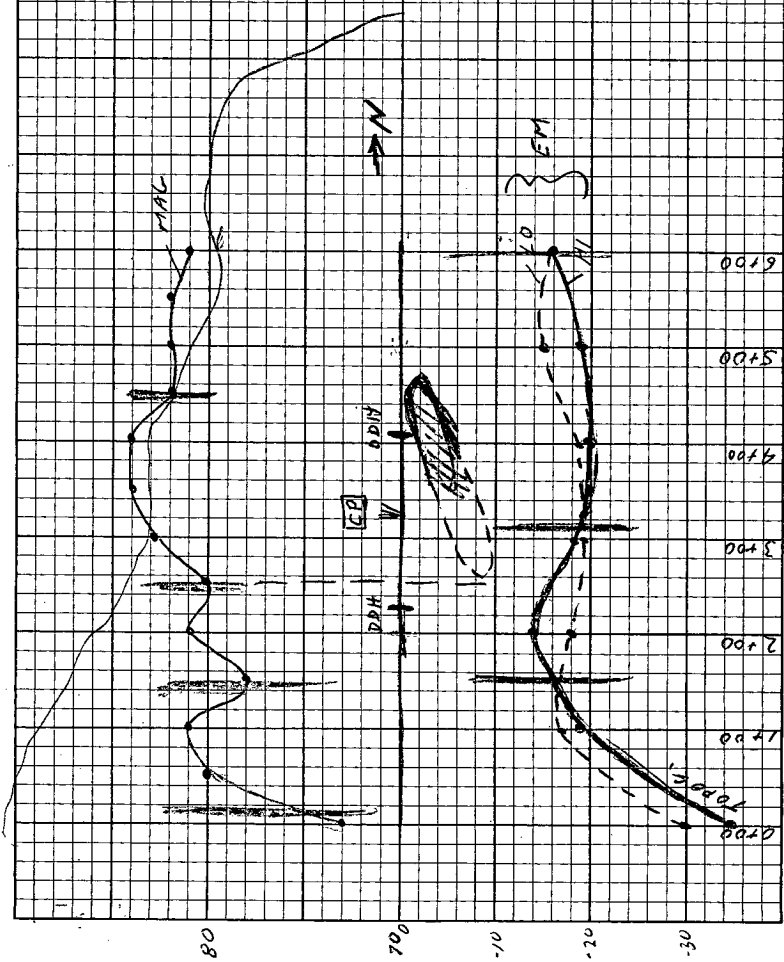
Donald R. Kweil
Klondike Helicopters
Whitehorse Y.T.

J. Dunder
Klondike Helicopters.

mt. Hunderc

Y.T.

	H ₀	L ₀	H ₁	L ₀
0700	+35	+35	-70	-65
1700	+31	+31	-50	-48
2700	+21	+20	-35	-30
3700	+22	+22	-40	-40
4700	+16	+16	-36	-35
5700	+15	+15	-34	-30
6700	+26	+26	-42	-42



HI

LO HI

LO

HI LO

+28

+29 -45

-46

-17

-17

+24

+24 -45

-46

-21

-22

+20

+21 -39

-39

-19

-18

+16

+16 -36

-34

-20

-18

+16

+17 -33

-33

-17

-16

+20

+20 -39

-41

-19

-21

+29

+30 -47

-47

-18

-19

Line # 3

0+00 68

+50 68

+100 75

+150 75

+200 75

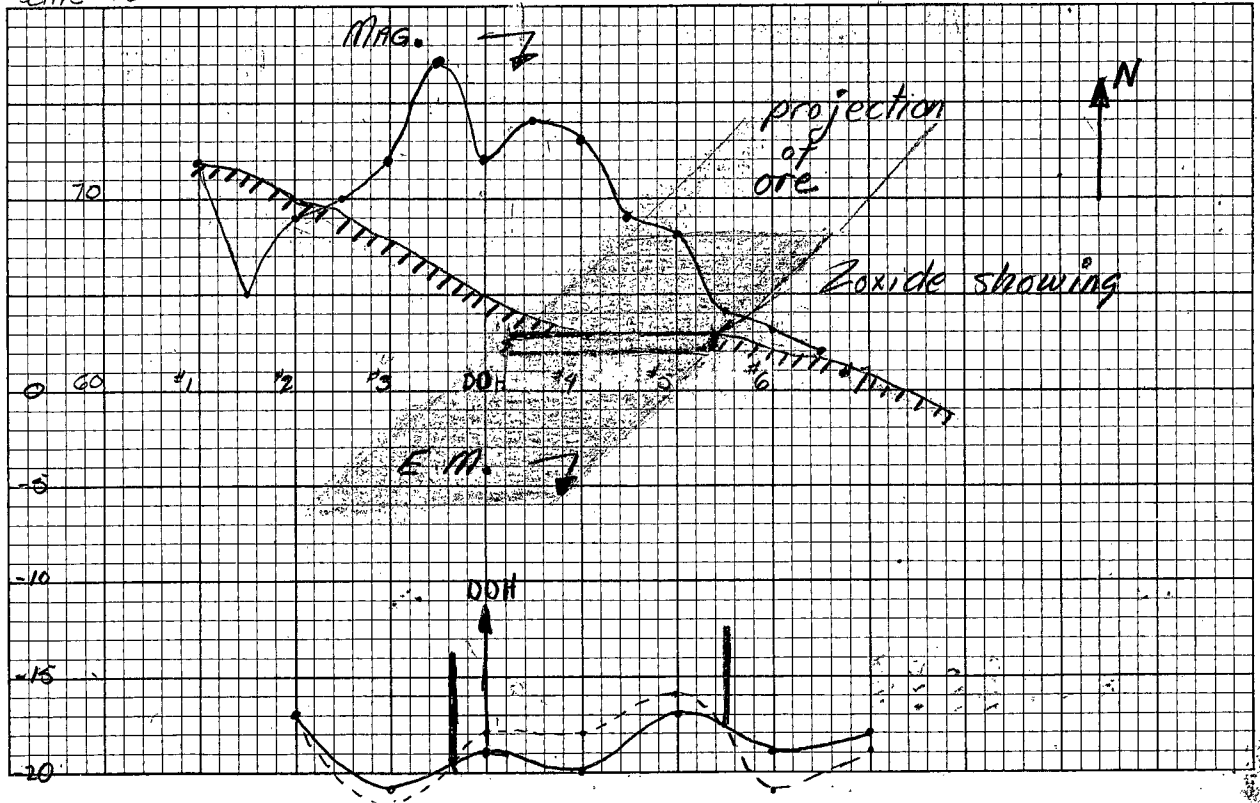
+250 75

+300 75

+350 72

+400 73

line #2



GEO-CHEM Log.

on
Mt. Hundere GROUP Y.T.

sta. colour TYPE EXPLANATION.

#1 begin upper traverse.
13 C.B. gravel snow slide area.
19-73 under S.S.
#24 dry silt sample.
#43 last sample on Road
above camp

51 BR. HS 150 ft. from sta. 50

52 " RS

53 " HS

54 " HS

55 " HS

56 " "

57 " "

58 " "

59 " "

60 " "

61 " "

62 " "

63 " "

64 " "

65 " "

73 out crop gravel on
72 reverse order 73 → 72

75 under N.S.

78 top of stain on road

81 north ridge

91 end of line

98 creek bottom begin

- Code :-

C.B.	-	creek bed
N.S.	-	north showing.
S.S.	-	south "
H.S.	-	hill side
R.S.	-	area of rock slide
BR.	-	brown colour
WH.	-	white "

drains a basin.

south east ridge of N.S.

below N.S.

bottom traverse on N.S. junct. of creeks

	106			silt samp. on	
SAT.	{	120		camp	
		125		silt on south	
		134		creek bed - dr	
		137		east side of N.	
		153		end of line	
SUN.	{	154		begin line on we	
		160-61-62		200' apart on we	
		176		end of west li	
		177 & 194		top west line of	
		195		begin of track	
		203	silt		
		216	silt		
	}	218		silt samp from creek on which	
		220			camp is located.
		222			
		224			
		226			
		228			
	230				

North face of north showing

runoff of north showing

again at camp.

ridge of S.S.

side of S.S. near fault

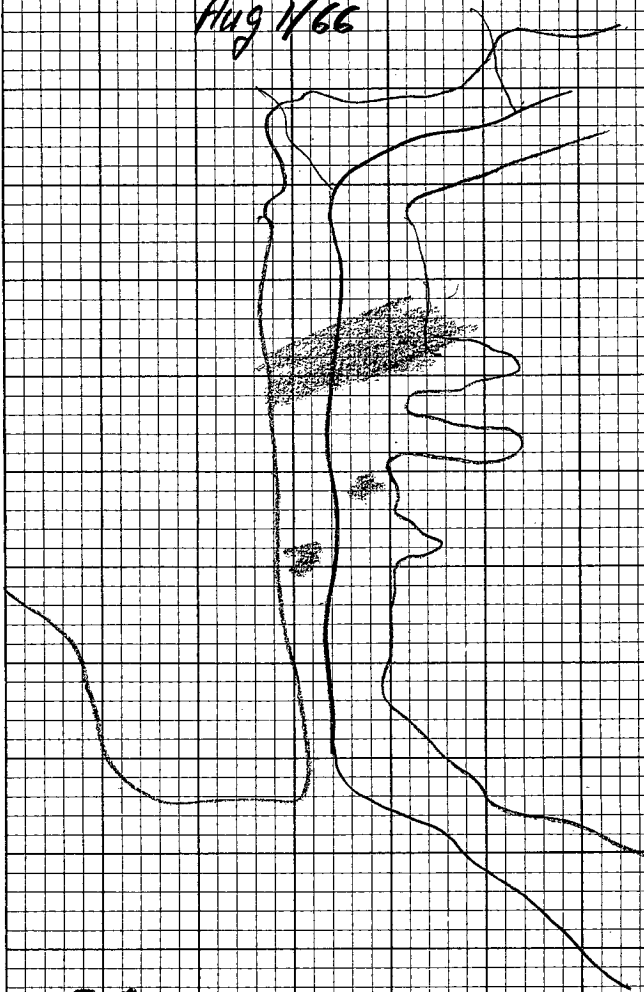
on S.S.

N.S.

back to camp from forks of 3 creeks

Tobally Lakes Y.T.

Aug 11/66



⊕ CAMP

PELLY-LAKES Y.T.

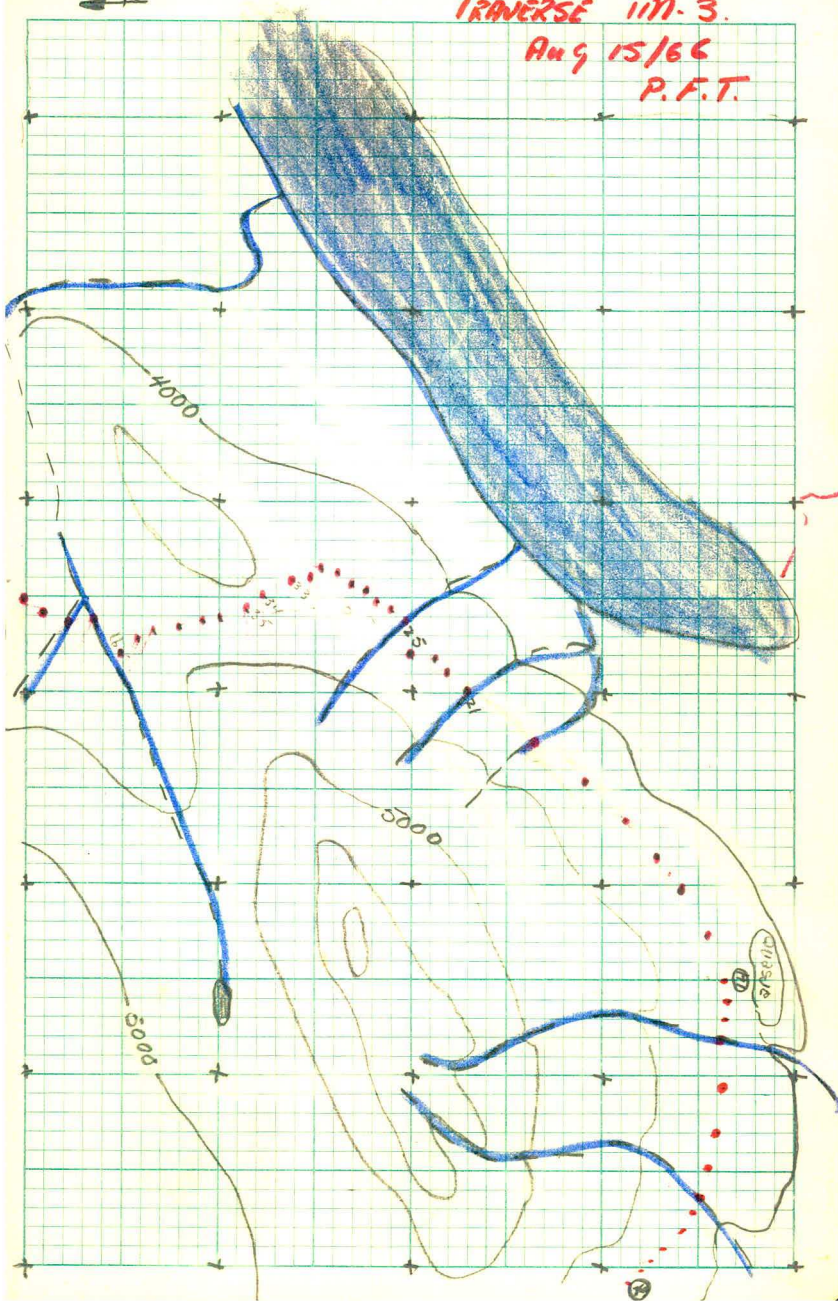
AUG 11/66

P.F.T.

TRaverse TIM-3.

Aug 15/66

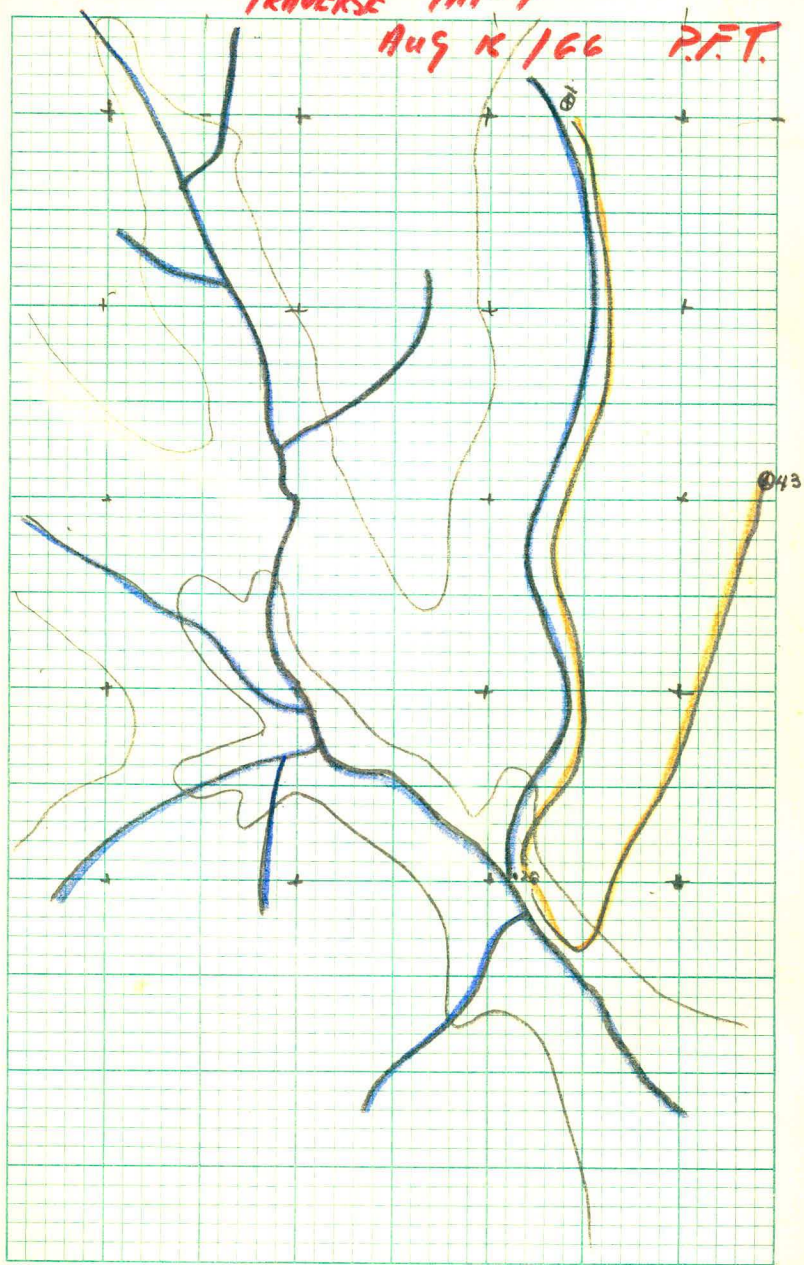
P.F.T.



TRAVERSE TAI-4

AUG 10 1966

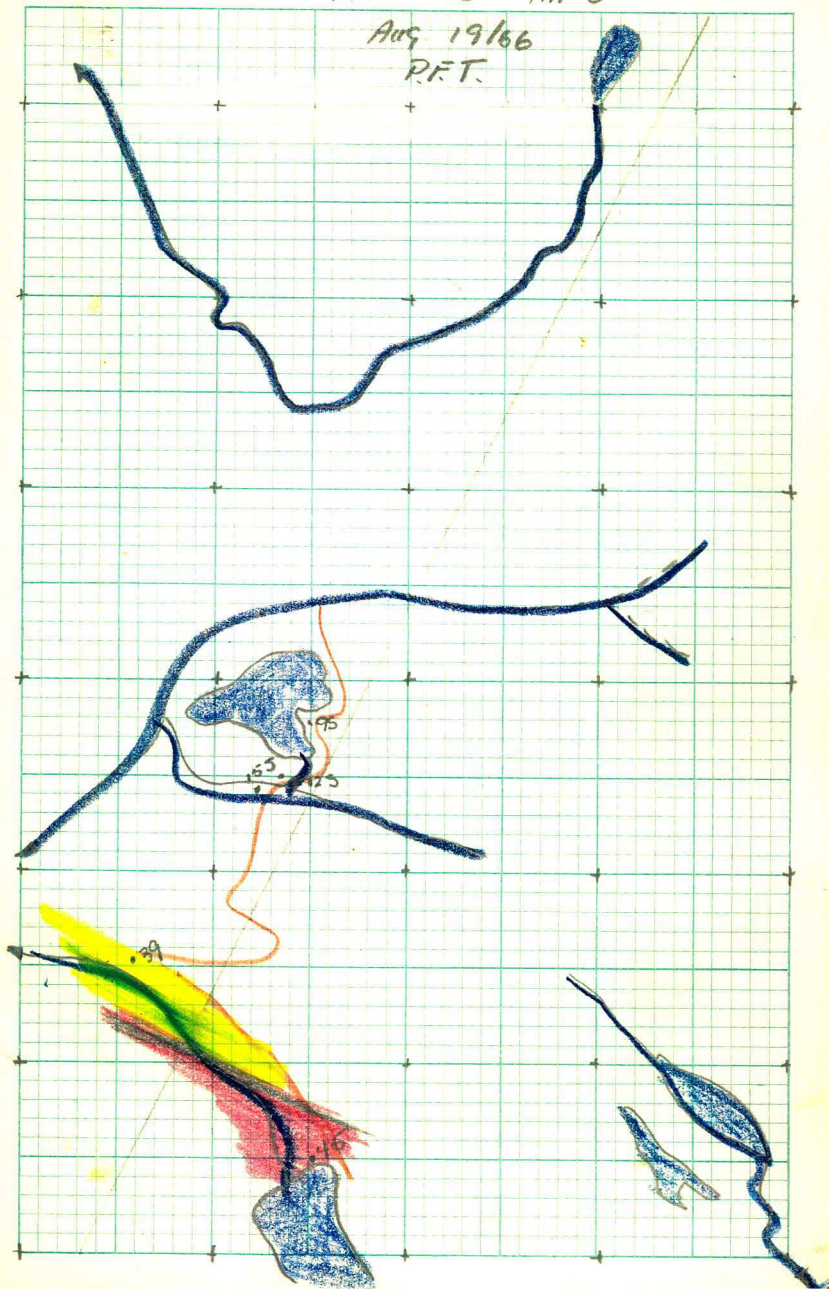
P.F.T.



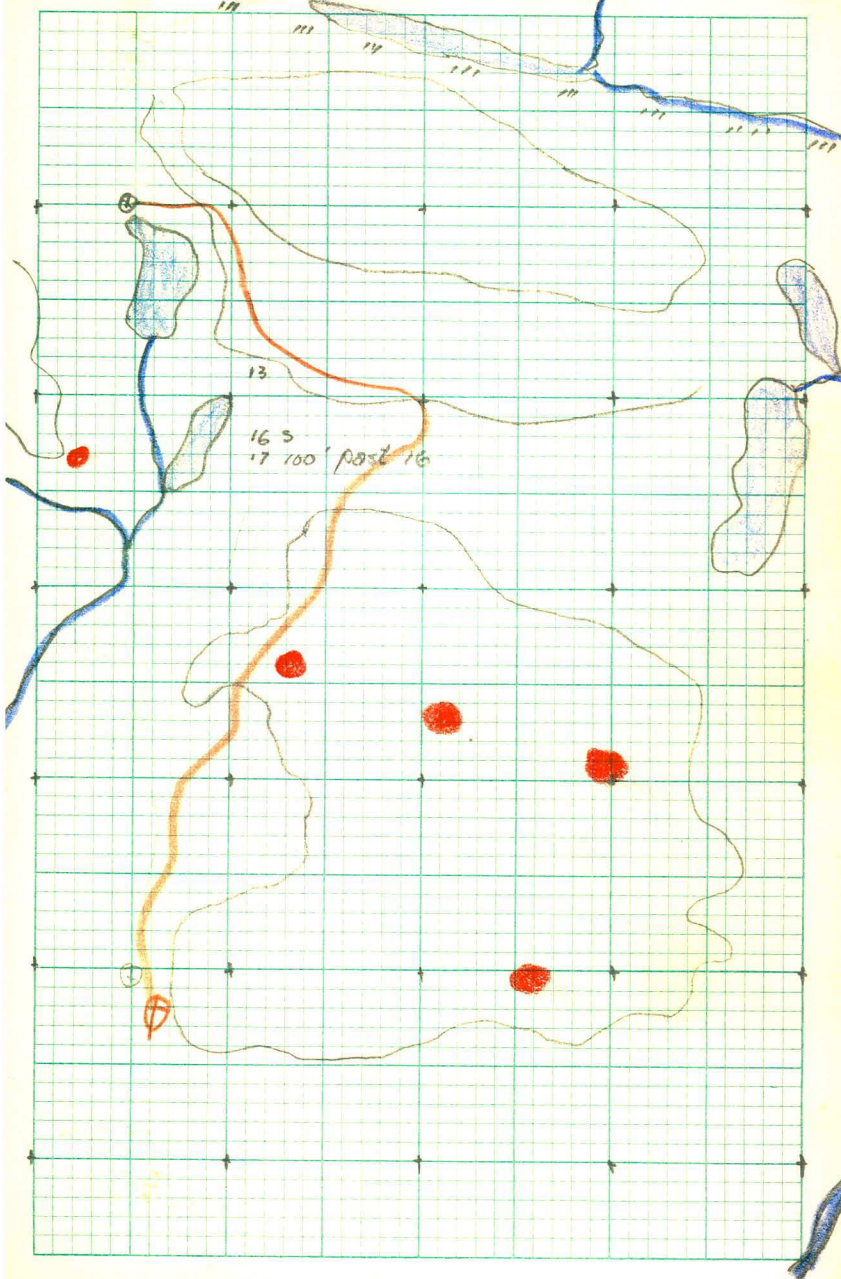
TRAVERSE TM-5

AUG 1966

P.F.T.

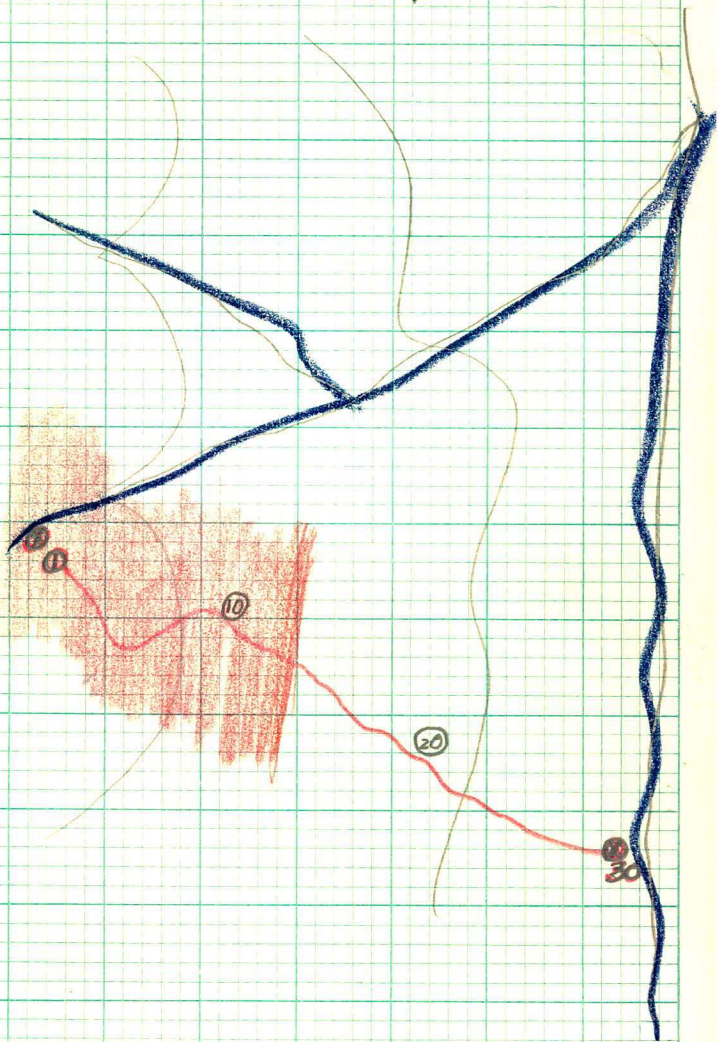


TRAVERSE TM 6 AUG 2016

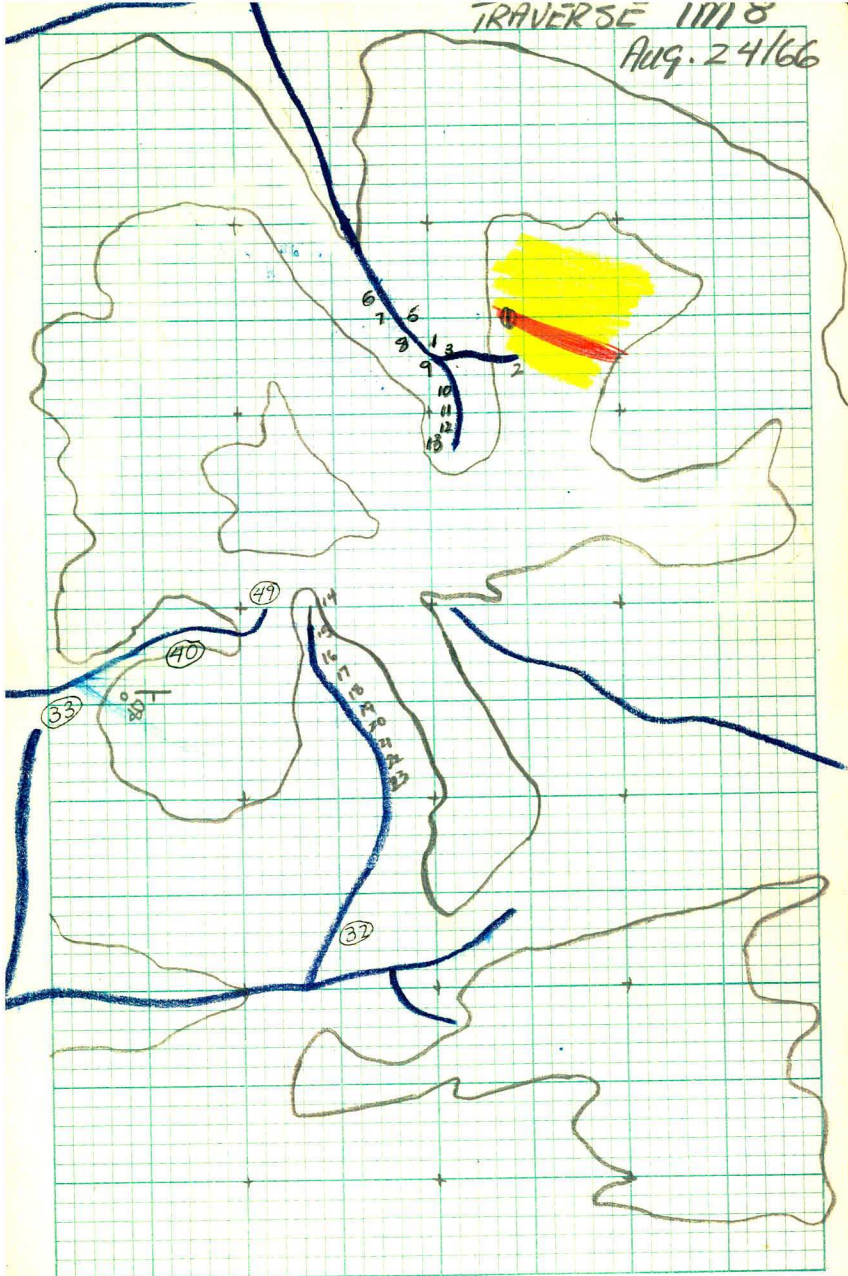


Traverse TM-7

Aug 22/66



TRAVERSE 11118
Aug. 24/66



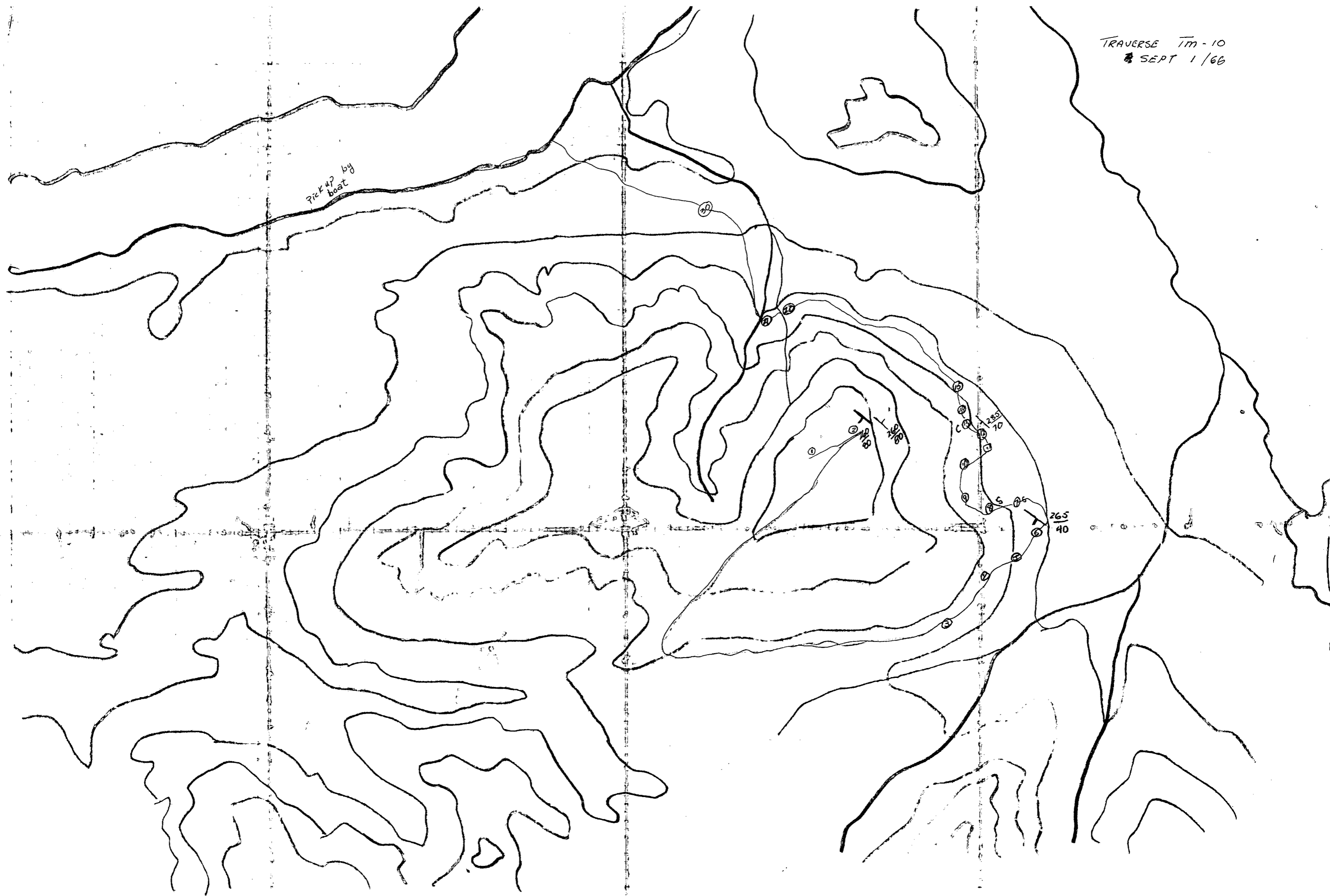
TRAVERSE TM-9 Aug 30/66

TM-9 was made on the east shore of FORTIN LAKE starting on the north end and finishing on the south.

The soils were not representative because they were washed gravels for at least 300' from the lake. In the most part the samples from the creeks flowing into the lake will be taken as the only reliable ones.

TRAVERSE TM-10
SEPT 1/66

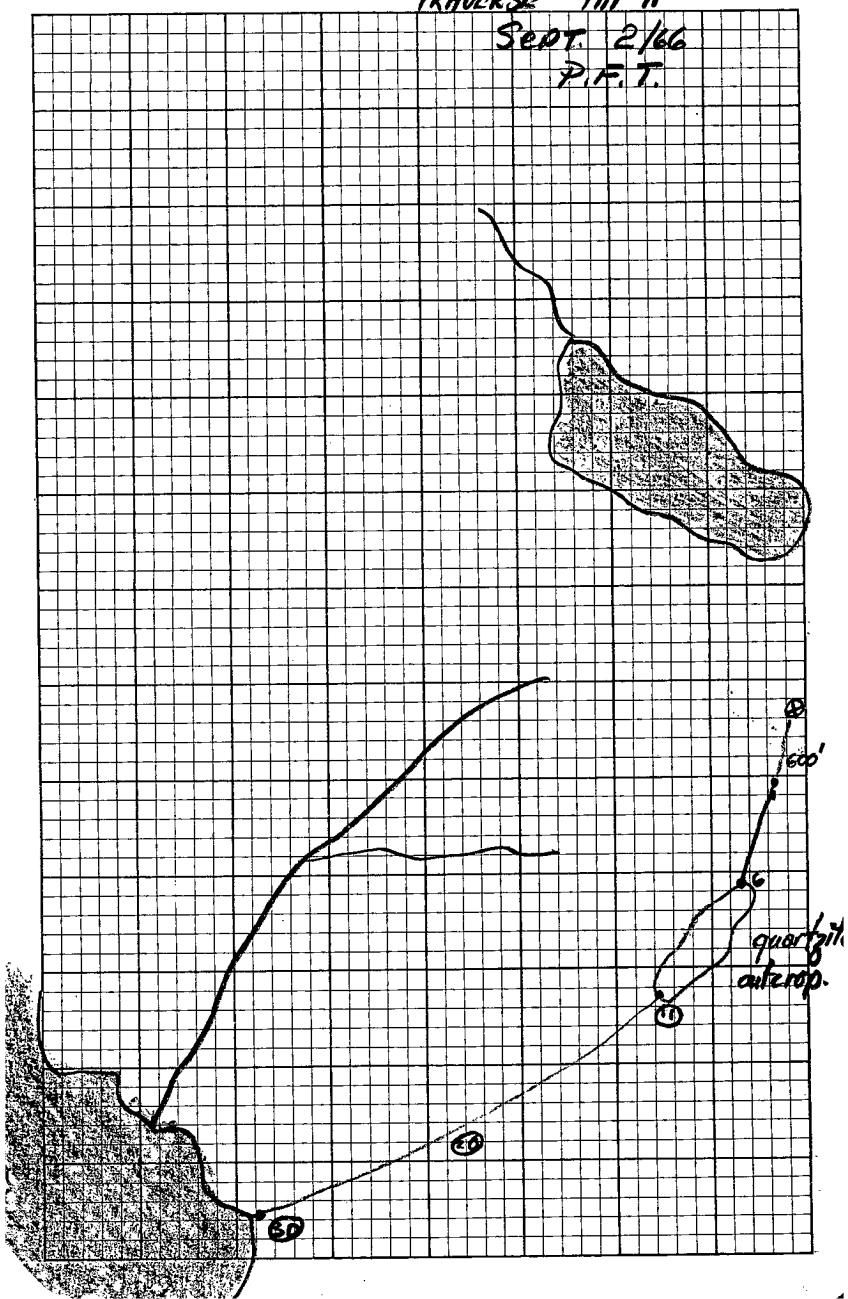
Pick up by
boat



TRAVERSE TM-11

SEPT. 2/66

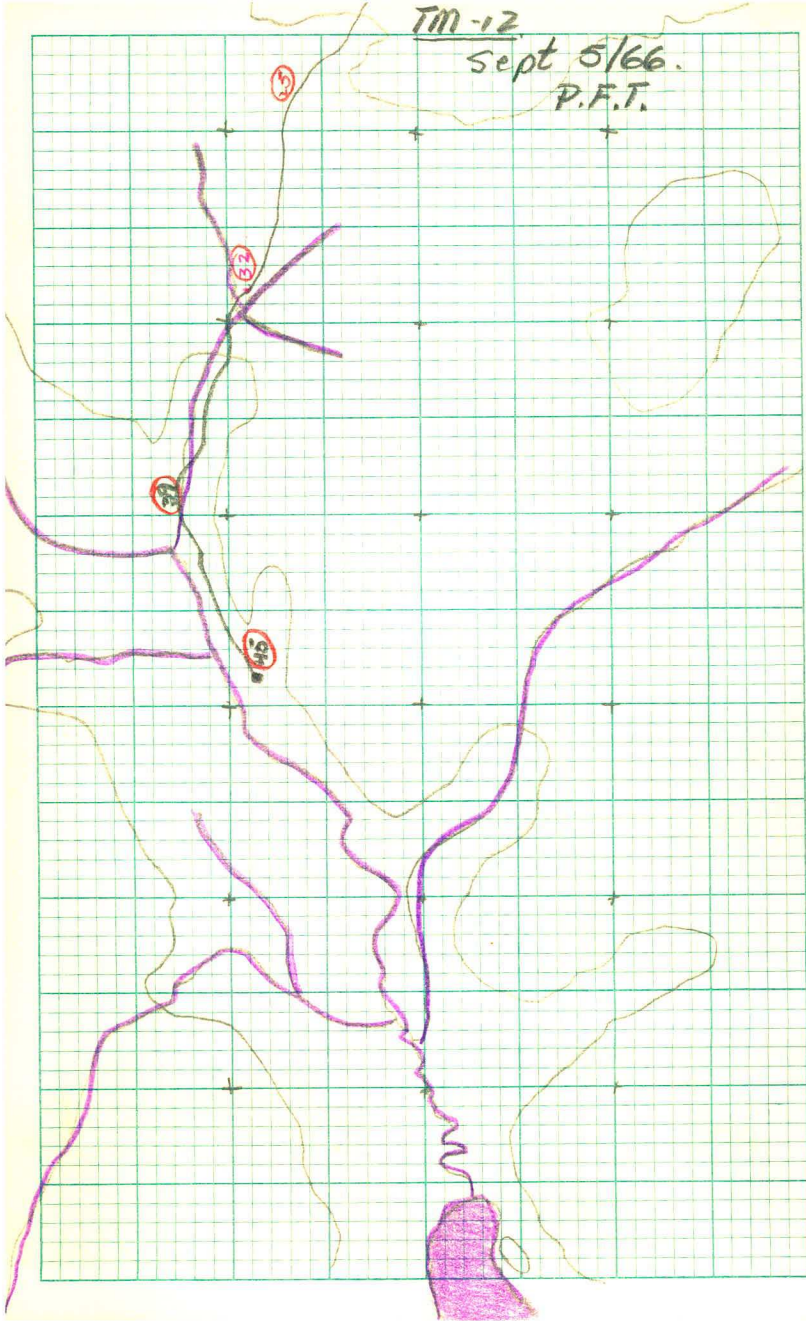
P.F.T.



TM-12

Sept 5/66.

P.F.T.



Tm 13
SEPT 8/66

