

020576

July 23 1967

MAG - SEA

BASE LINE DETERMINATION

① July 23/67 THE LINE  
SEA

STA	TIME	RDC	TIME	RDC
			<del>3:0</del>	<del>D.C</del>
0	1:35	94	3:23	96
4	1:37	96	3:21	99
8	1:38	96	3:18	103
12	1:40	95	3:16	94
16	1:42	95	3:14	95
20	1:44	100	3:12	106
24	1:46	97	3:10	102
28	1:48	111	3:08	113
32	1:49	104	3:05	117
36	1:51	124	3:02	127
40	1:53	102	3:01	102
44	1:55	127	2:58	139
48	1:57	128	2:55	147
52	1:59	183*	2:52	184*
56	2:02	92	2:50	110
60	2:03	123	2:48	132
64	2:06	189	2:47	101
68	2:08	47	2:44	66
72	2:10	84	2:42	108
76	2:12	117	2:39	122
80	2:14	94	2:37	107
84	2:15	148	2:35	180
88	2:17	105	2:32	94
92	2:18	108	2:31	106
96	2:21	120	2:29	100
	2:22	100	2:25	96

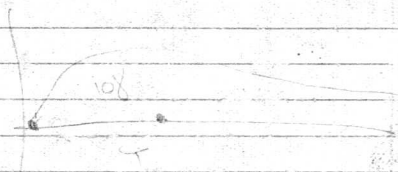
128  
79

②

BASE STN - 3+00<sup>S</sup> ON  
LINE 0+00<sup>E</sup>

SETTING - 100 Y ON 1

2<sup>4125</sup> → 97 Y



← SCALE 2



July 29/67

Base Station

O E - 3 south

~~98~~  
97

at: ~~10.49~~  
10.49

~~111~~

~~6.436~~

112

6.41

111

6.44

MAG - SEA

LINES: 100

96

92

88

② July 24/67  
SEA

STA	TIME	RDCG	S.C-2
0	12.01	109	Line 100-N
1N	12.03	109	
2N	12.05	<del>109</del> 111	
3N	12.10	109	
4N	12.11	103	
5N	12.12	106	
6N	12.13	110	
7N	12.15	114	
8N	12.17	125	
9N	12.18	99	
10N	12.19	111	
11	12.21	118	
12	12.22	120	
13	12.23	120	
14	12.24	124	
15	12.25	128	
16	12.27	109	
17	12.28	121	
18	12.28	115	
19	12.30	112	
20	12.30	112	
21	12.32	111	
22	12.34	114	
23	12.35	111	
24	12.37	119	
<del>25</del>			
<del>26</del>			



July 24/67  
SEA

STA	TIME	TRDG	Dist 96-N
24N	12.45	110	
23N	12.46	111	
22N	12.47	104	
21N	12.48	103	
20N	12.50	102	
19	12.52	101	
18	12.54	95	
17	12.55	98	
16	12.56	97	
15	12.57	96	
14	1.00	101	
13	1.02	100	
12	1.04	106	
11	1.05	102	
10	1.06	104	
9	1.07	103	
8	1.08	105	
7	1.10	103	
6	1.11	113	
5	1.12	99	
4	1.13	75	↳ Road
3	1.16	104	
2	1.18	101	
1	1.19	97	
0	1.20	101	
	1.22	102*	↳ line 100 STN 00

DC	B.L.C	RDG	
+5	-5	0	
+5	-5	0	110
+5	-5	0	111
+5	-5	0	104
+5	-5	0	103
+5	-5	0	102
+5	-5	0	101
+5	0	+5	100
+5	0	+5	104
+5	0	+5	102
+5	0	+5	101
+5	0	+5	106
+5	⊕ +5	+5	105
+5	⊕ +5	+5	111
+5	⊕ +5	+5	107
+5	+5	+10	114
+5	+5	+10	113
+5	+5	+10	115
+5	+10	+15	118
+5	+10	+15	128
+5	+10	+15	114
+5	+10	+15	90
+5	+10	+15	119
+5	+10	+15	116
+5	+10	+15	112
+5	+10	+15	116

⑥ July 24/67 SEA

STA	TIME	RDG	Line 100
0	1.40	97	
1 S	1.42	105	
2 S	1.43	102	
3 S	1.44	104	
4 S	1.45	100	
5 ↓	1.46	96	
6 ↓	1.47	72	Road C
7 ↓	1.48	90	
8	1.50	91	
9	1.50	99	
10	1.51	87	2.50
11	1.53	81	
12	1.54	73	
13	1.56	104	
14	1.57	102	

D.C	B.L.C	NET	RDG
+5	0	+5	102
+5	0	+5	110
+5	0	+5	107
+5	+5	+10	114
+5	+5	+10	110
+5	+5	+10	106
+5	+5	+10	82
+5	+10	+15	105
+5	+10	+15	106
+5	+10	+15	114
+5	+10	+15	102
+5	+15	+20	101
+5	+15	+20	93
+5	+15	+20	124
+5	+15	+20	122

40

1:40

STA	TIME	RDG	Line 96
14.8	2:02	89	} hill
13.8	2:04	63	
12.8	2:06	61	
11.8	2:07	73	
10	2:08	77	
9	2:10	78	
8	2:11	70	
7	2:13	60	
6	2:14	58	
5	2:15	83	
4	2:16	78	
3	2:18	76	
2	2:19	64	
1	2:20	68	
0	2:21	65	
	2:24	101*	Line 100 STA 0

D.C	B.LC	NET	RDG
+5	+20	+25	114
+5	+20	+25	88
+5	+25	+30	91
+5	+25	+30	103
+5	+25	+30	107
+5	+30	+35	113
+5	+30	+35	105
+5	+30	+35	95
0	+35	+35	93
0	+35	+35	118
0	+35	+35	113
0	+35	+35	111
0	+45	+45	109
0	+45	+45	113
0	+45	+45	110

STA	TIME	RDG	Line 92
0	2.44	83	
1 N	2.45	104	
2 N	2.46	108	
3 N	2.47	104	
4 N	2.48	109	
5 N	2.49	102	
6	2.50	83	
7	2.51	92	
8	2.51	93	
9	2.53	90	
10	2.53	100	
11	2.54	102	
12	2.55	104	
13	2.56	81	
14	2.57	91	
15	2.58	89	
16	2.59	96	
17	3.00	112	
18	3.02	115	
19	3.03	105	
20	3.04	109	
21	3.05	89	
22	3.06	111	
23	3.07	109	
24	3.10	116	
Σ			



(12)

STA	TIME	RDG	Line 88
24N	3.14	109	
23N	3.16	100.	
22N	3.17	103	
21N	3.18	100	
20N	3.20	106	
19	3.21	106	
18	3.23	111	
17	3.24	112	
16	3.27	115	
15	2.29	113	
14	3.31	112	
13	3.32	108	
12	3.33	89	
11	3.34	66	
10	3.36	56	
9	3.37	64	
8	3.38	61	
7	3.39	85	
6	3.40	77	
5	3.41	69	YARR!
4	3.43	95	
3	3.43	62	
2	3.45	56	
1	3.46	60	
0	3.47	86	
0	3.50	82	* Line 92 *

11/25



4:15<sup>50</sup> 25  
2 1.25

1 2  
35  
125 (14)

STA TIME RDG June 92

0	4:15	115
1 S	4:16	109
2 S	4:16	108
3 S	4:17	104
4 S	4:19	108
5 S	4:20	109
6	4:21	101
7	4:21	103
8	4:24	104
9	4:25	95
10	4:25	90
11	4:26	57
12	4:27	60
13	4:28	65
14	4:29	68
15	4:30	60
16	4:32	60
17	4:33	62
18	4:35	94

level

115  
70  
36



STA	TIME	RDG	<u>Line 88</u>
28 S	4.46	135	
27 S	4.48	109	
26 S	4.49	107	
25	4.51	417	
24	4.53	110	
23	4.55	100	
22	4.57	103	
21	4.59	104	
20	5.00	104	
19	5.01	98	
18	5.03	96	
17	5.05	97	
16	5.07	102	
15	5.10	98	
14	5.11	102	
13	5.14	94	
12	5.17	99	
11	5.19	101	
10	5.21	96	
9	5.26	94	
8	5.29	99	
7	5.30	101	
6	5.31	80	
5	5.33	81	
4 S	5.34	88	
3 S	5.36	90	
2 S	5.37	97	
1 S	5.38	111	

