

020589

①

Aug 30 - Mt. ...

Morning base camp Rdg. — 100 9:30
 Evening base-camp Rdg. — 106 1:28

Line	Rdg	Time	Rdg	Time
0	98	9:31	98	10:19
4	89	9:36	93	10:16
8	90	9:41	92	10:13
12	113	9:46	115	10:08

Mean

0 - 98

103 - 5

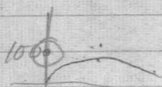
4 - 91

95 - 4

8 - 91

91 - 0

12 - 114

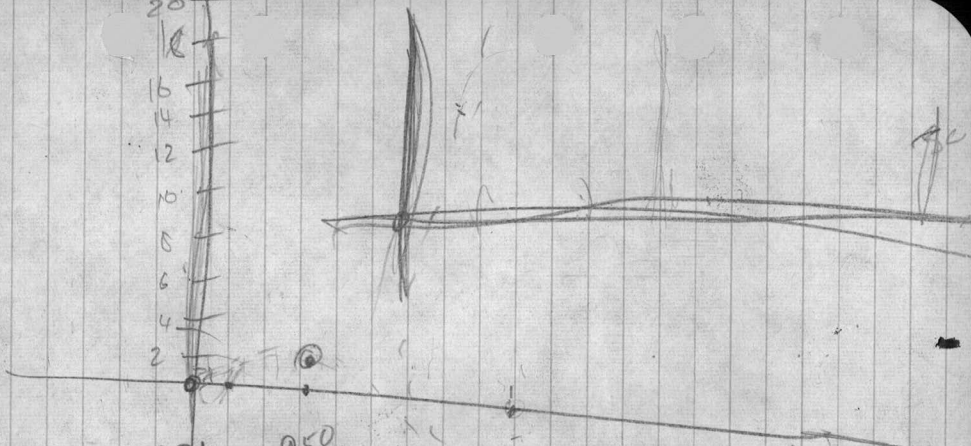
125 - ~~11~~

9:30

9106

1:28

20
18
16
14
12
10
8
6
4
2



931 950

9.30 - 1.28

180
28
30

67 $\sqrt{238}$
 $\frac{18}{58}$ $\frac{54}{40}$

180

3. $\sqrt{238}$
 $\frac{18}{58}$ $\frac{54}{40}$

238

AUG 30

②

MULTI

	STW	TIME	RDC
Line 0s	0	10.35	102
	1s	10.37	105
	2s	10.39	97
	3s	10.40	97
	4s	10.42	93
	5	10.43	98
	6	10.44	93
	7	10.46	90
	8		
Line 4s	8s		
	7s	10.52	94
	6s	10.53	91
	5s	10.55	93
	4	10.56	91
	3	10.57	95
	2	10.58	96
	1	10.59	96
	0	11.01	94
	1N	11.02	95
	2N	11.03	88
	3N	11.04	87
	4N	11.06	91
	5N	11.07	89
	6N	11.09	90
	7N	11.10	87
	8N	11.11	85

AUG 30

③

MULTI

STN	TIME	RDG
Line ON		
8N	11.16	86
7N	11.18	91
6N	11.20	90
5	11.21	88
4	11.24	90
3	11.25	96
2	11.27	96
1	11.28	95
0	11.29	100

Zgurr

AUG. 30

(4)

MULTI

STW	TIME	RDG
Line 8 ^s 0	12:17	92
15	12:20	101
28	12:21	91
35	12:23	98
45	12:23	92
5	12:24	95
6	12:25	97
7	12:26	96
8	12:27	

19

~~3~~

Line 12 ^s 9 ^s		
7 ^s	12:49	93
6 ^s	12:53	98
5 ^s	12:54	90
4 ^s	12:55	101
3	12:56	111
2	12:57	126
1	12:58	108
0	12:59	129
1N	1:00	87
2N	1:01	89
3N	1:01	90
4N	1:02	91
5N	1:03	86
6	1:04	98
7	1:04	96
8	1:05	94

37

47

AUG 30

⑤

MULTI

STN	TIME	RDG
Line 8N		
8N	1:09	93
7N	1:11	95
6N	1:12	92
5N	1:13	91
4N	1:15	92
3N	1:16	93
2N	1:19	91
1	1:20	94
0	1:21	97

-42 (written over 1:16)
 -52 (written over 1:21)
 57 (written next to 93)

$$\begin{array}{r}
 135 \\
 20 \\
 \hline
 115
 \end{array}$$