

WELL V-96R
DEPTH 378
PICTURE NO. 3
INCLINATION 2.3°
OBS. DIR. N35E
COR. DIR. 068°
TOOL FACE _____
RUN BY AL
DATE JUNE 7
CHECKED BY _____



sperry-sun

SP-132 (11-74)

WELL V-96R
DEPTH 108
PICTURE NO. 4
INCLINATION 3.9
OBS. DIR. N91E
COR. DIR. 074°
TOOL FACE _____
RUN BY A.L.
DATE JUNE 7
CHECKED BY _____



sperry-sun

SP-132 (11-74)

WELL V-96R
DEPTH 438
PICTURE NO. 2
INCLINATION 4.2
OBS. DIR. N36E
COR. DIR. 069°
TOOL FACE _____
RUN BY AL
DATE JUNE 7
CHECKED BY _____



sperry-sun

SP-132 (11-74)

WELL V-96
DEPTH 208
PICTURE NO. 4
INCLINATION 2.0
OBS. DIR. N09E
COR. DIR. 042°
TOOL FACE _____
RUN BY A.L.
DATE JUNE 7
CHECKED BY _____



sperry-sun

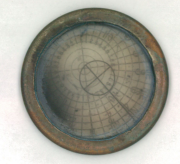
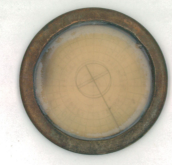
SP-132 (11-74)

WELL V-96R
DEPTH 519
PICTURE NO. _____
INCLINATION 4.8
OBS. DIR. N91E
COR. DIR. 080°
TOOL FACE _____
RUN BY AL
DATE JUNE 7
CHECKED BY _____



sperry-sun

SP-132 (11-74)



020631