



Curragh
Resources Inc.

P.O. Box 1000
Faro, Yukon
Y0B 1K0

Tel: (403) 994-2600
FAX: Admin: (403) 994-2664
Purch: (403) 994-3184

020735

GRUM DEPOSIT

1992 MINING PLANS

I N D E X

<u>TOPIC</u>	<u>PAGE</u>
Mining History of Faro	1-3
Grum Mine Reserves	4
Action Plan	5-6

FIGURES

1.1	Location Plan
1.2	Vicinity Map
2.1	Anvil Range Geology
2.9	Grum Cross Section 68 W
2.10	Grum Cross Section 78 W
2.15	Grum Geology Plan
2.35	Stage I Pit Design
2.36	Stage II Pit Design
2.37	Stage III Pit Design
2.38	1992 Production by Area
2.39	1992 Mill Feed by Area
2.40	1992 Mining Sequence to March
2.41	1992 Mining Sequence to June
2.42	1992 Mining Sequence to September
2.43	1992 Mining Sequence to December
2.44	Grum Waste Dumps
2.47	Section through Waste Dump
2.56	Settling Pond Water Treatment Plant

MINING HISTORY OF FARO

IN 1953, MR. AL KULAN "DISCOVERED" THE VANGORDA DEPOSIT. THIS WAS INDICATED BY A "RED SPRING" OCCURRENCE IN THE AREA OF THE VANGORDA PIT, WHICH HAS BEEN MINED DURING THE LAST QUARTER OF 1991. THIS AREA WAS DIAMOND-DRILLED DURING 1954 AND 1955, BUT NO MINING TOOK PLACE UNTIL 1990.

THE FARO DEPOSIT WAS DISCOVERED IN 1964, AND MINING WAS STARTED IN 1969 BY ANVIL MINING CORPORATION.

IN 1973, A GEOPHYSICAL ANOMALY LYING NORTH OF THE VANGORDA DEPOSIT WAS TESTED BY DIAMOND DRILLING UNDER THE DIRECTION OF DR. AARO AHO OF THE A.E.X. SYNDICATE. THIS DRILLING CONFIRMED THE EXISTENCE OF THE "GRUM" DEPOSIT. AN UNDERGROUND DEVELOPMENT PROGRAM WAS CONDUCTED TO FURTHER TEST THE ORE RESERVES. THIS CONSISTED OF DRIVING TWO PARALLEL DECLINE RAMPS FOR A TOTAL LENGTH OF 2900 METRES. THIS PERMITTED UNDERGROUND DRILLING AS WELL AS THE RECOVERY OF "BULK SAMPLES".

THESE UNDERGROUND WORKINGS EXTEND TO A DEPTH OF 200 METRES FROM THE SURFACE.

IN MAY 1979, AN AGREEMENT WAS REACHED BETWEEN CYPRUS ANVIL AND KERR ADDISON MINES AND CANADIAN NATURAL RESOURCES THAT CYPRUS ANVIL WOULD ACQUIRE ALL MINERAL PROPERTY IN THE "ANVIL DISTRICT" (APPROXIMATELY 31 KM²). MINING WAS CONFINED TO THE FARO PIT FROM 1969 UNTIL 1982, WHEN CYPRUS ANVIL CEASED PRODUCTION. CURRAGH RESOURCES ACQUIRED CONTROL OF ALL PROPERTIES IN THE AREA IN NOVEMBER 1985.

THE DEVELOPMENT OF THE "VANGORDA PLATEAU", INCLUDING THE VANGORDA AND GRUM MINES, WAS IDENTIFIED AS A REQUIREMENT TO EXTEND THE LIFE OF THE MINING OPERATION BEYOND THAT OF THE FARO PIT. THE SEQUENCING OF ORE RELEASE FROM THESE MINES WAS DETERMINED BY THE PHYSICAL LOCATION OF THE ORE, COMBINED WITH THE ASSOCIATED WASTE WHICH HAD TO BE MOVED TO RELEASE THIS ORE. THE VANGORDA DEPOSIT WAS BOTH MORE GEOLOGICALLY SIMPLE AND REQUIRED LESS WASTE REMOVAL.

THE DISTANCE OF 14 KM FROM THE GRUM MINE TO THE CONCENTRATOR AT FARO CAUSED SOME LOGISTICAL PROBLEMS. SEVERAL METHODS OF ORE TRANSPORT WERE CONSIDERED, INCLUDING A CONVEYOR SYSTEM OR SEVERAL POSSIBILITIES OF TRUCK HAULAGE. THE PREPARATION OF THE ROADBED BEGAN IN SEPTEMBER 1987 FROM THE FARO END. DURING 1988, IT WAS DECIDED TO EXCAVATE ROCK FROM THE GRUM PIT AREA TO PROVIDE ROAD MATERIALS FROM THAT END. THIS WAS CONTINUED UNTIL MAY 1989. SINCE THAT TIME, THE GRUM PIT HAS BEEN USED TO SUPPLY ROAD BUILDING MATERIALS ON AN "AD HOC" BASIS.

THE VANGORDA MINE WAS STARTED IN AUGUST OF 1990. IT IS NOW SCHEDULED TO BE COMPLETED BY THE END OF THE FIRST QUARTER OF 1993.

THE MINING SEQUENCE OF THE GRUM PIT IS NOW FOCUSED ON THE REQUIREMENT TO SUPPLY ORE AS QUICKLY AS POSSIBLE TO MEET THE REQUIREMENTS OF THE CONCENTRATOR.

GRUM MINE RESERVES

A. MINING RESERVES (i.e. within pit, dilution included)

ORE: @ 4.0% Pb Zn cut-off ore = 25.1 Mt @ 7.97%

Ag = 50 gm/t

Au = .81 gm/t

WASTE: 166.4 Mt

STRIPPING RATIO: 6.61

B. "IN SITU" RESERVES (total in area)

ORE: 32.1 Mt @ 8.98%

Ag = 57 gm/t

Au = .95 gm/t

GRUM MINING - ACTION PLAN

January 7, 1992

	RESPONSIBILITY OF	COMPLETION DATE
1. Snow removal	Mine Operations	01/10/92
2. Clean out ditch and install in-pit pump with temporary pipeline	Contractor	01/14/92
3. Retain dewatering consultant to review requirements for perimeter walls. Install additional pumps following consultant's recommendations	Engineering for MPR	ASAP
4. Install survey points	Mine Survey	
5. Survey and locate in field the limits of mining phases	Mine Survey	01/14/92
6. Install explosives magazine	BXL Ltd.	01/31/92
7. Complete transfer of engineering facilities to Grum office	Requires appr. funds-Toronto	
8. Power distribution: a) Extend power line to new ramp system. b) Complete ring of 46 Kv around pit for shovel and drill flexibility	Mine Electrical	ASAP
9. Contractor: a) Build new ramp and road system into south end of pit. This may require rock excavation from 1288 "J" blast. b) Remove overburden from south end of Phase I and haul to overburden dump. c) Install shop facility (site preparation started in 1991). d) Drill & blast work is required by contractor by end of first month	Contractor	May/92
		ASAP 01/31/92

GRUM MINING - ACTION PLAN

January 7, 1992

10. Water treatment plant (AMD) will be required to be operated on a full-time basis (improvements to the lime-handling system are required prior to this)
11. Establish water collection ditch at base of main dump
12. Prepare a pumping system to transport this water to Little Creek dam. Study during summer - construct during Fall/92 if required

RESPONSIBILITY OF	COMPLETION DATE
Mine Operations Mill Maint.	02/15/92
Mine Operations	Summer/92
Mine Operations	Fall/92

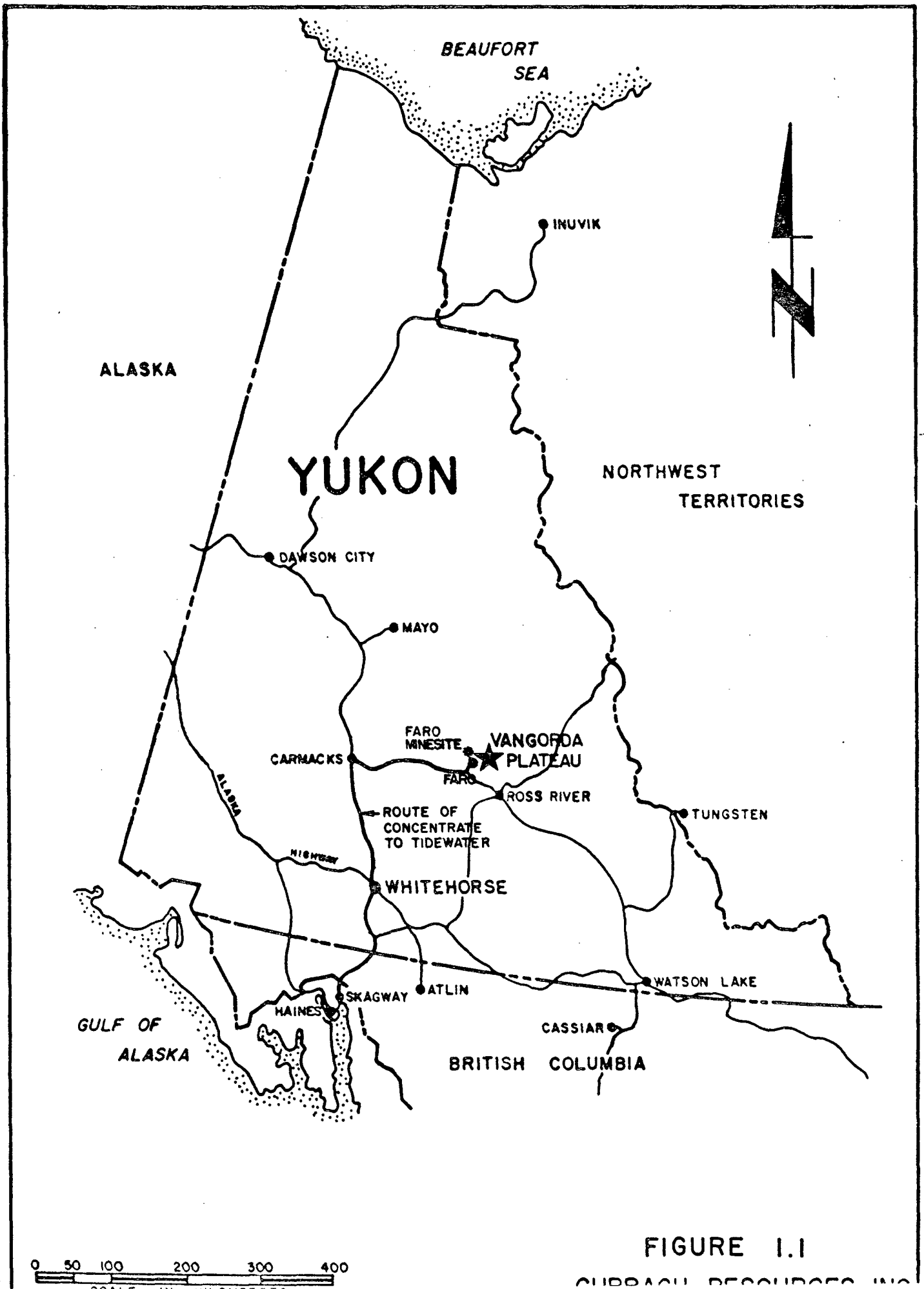


FIGURE 1.1

CORBETT RESOURCES INC.

CURRAGH RESOURCES INC.

GEOLOGY OF THE ANVIL RANGE LEAD-ZINC-SILVER DISTRICT

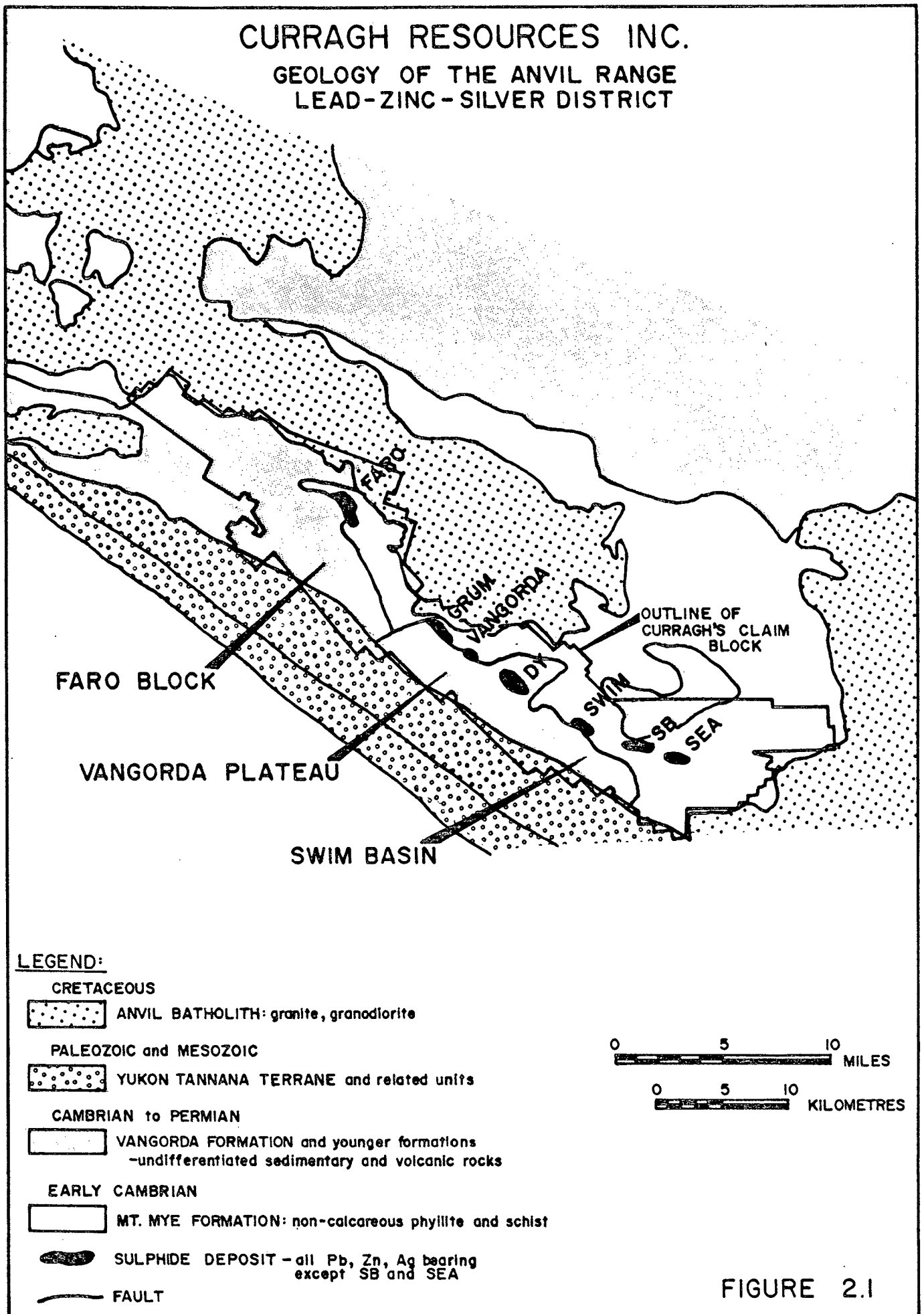
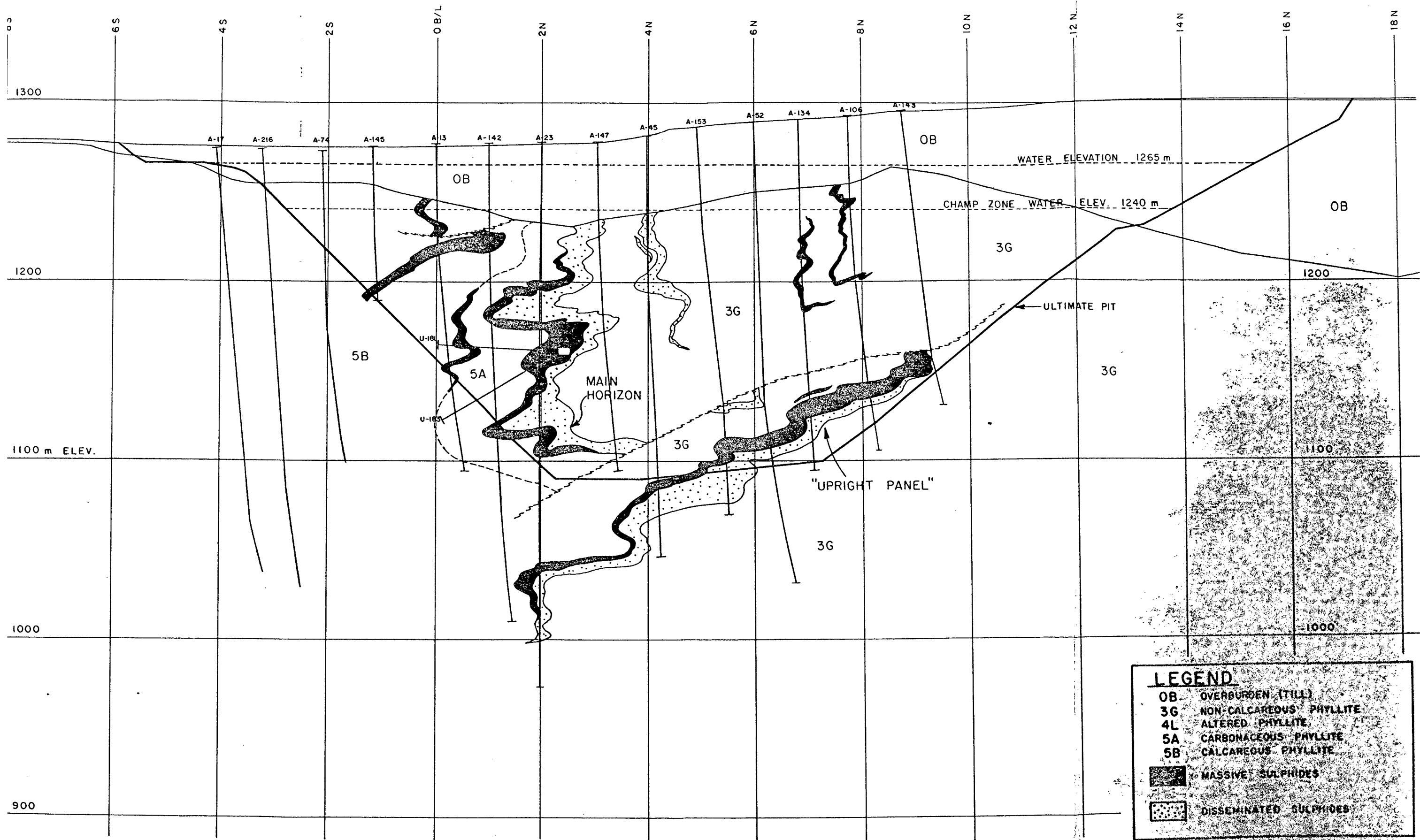


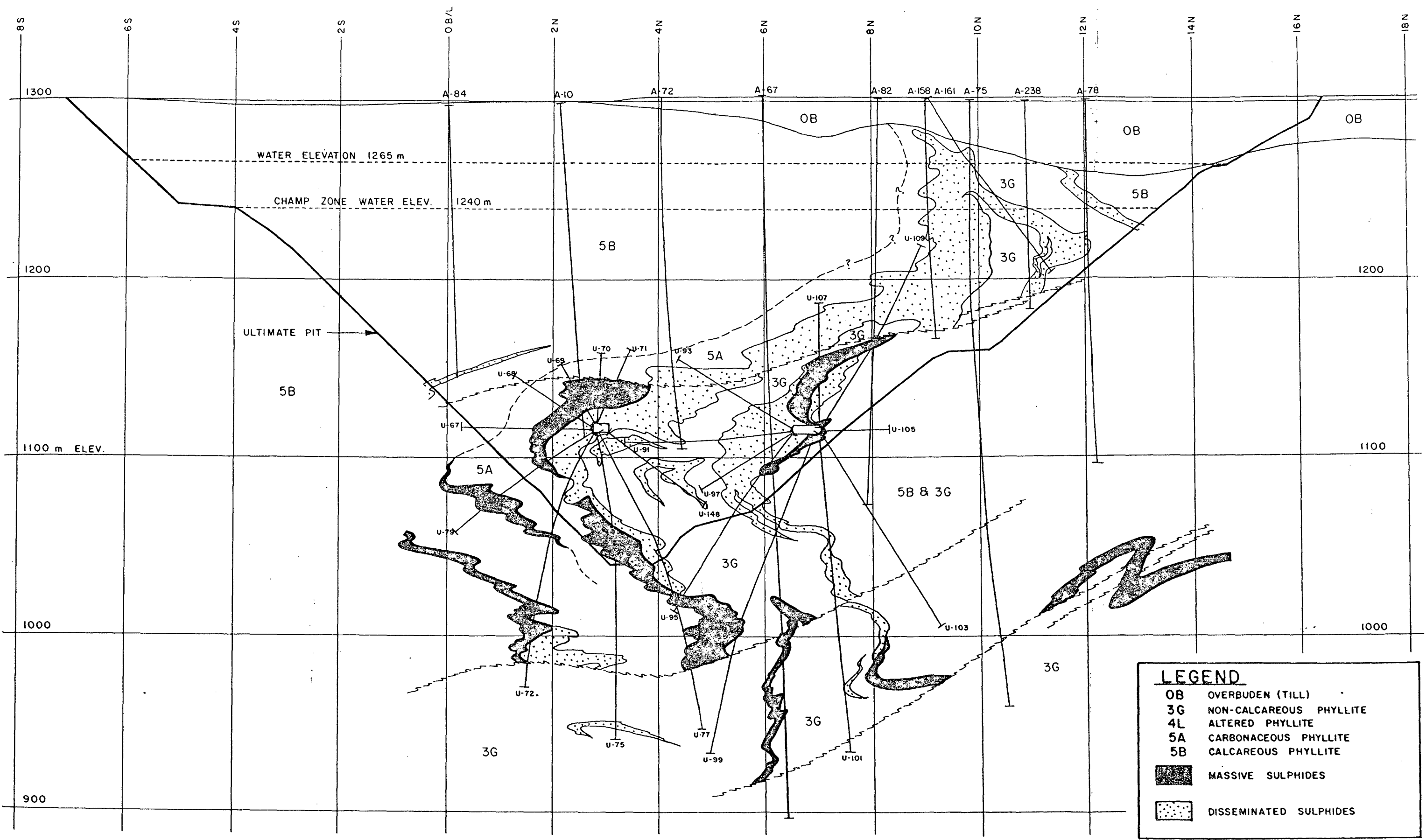




FIGURE 2.1



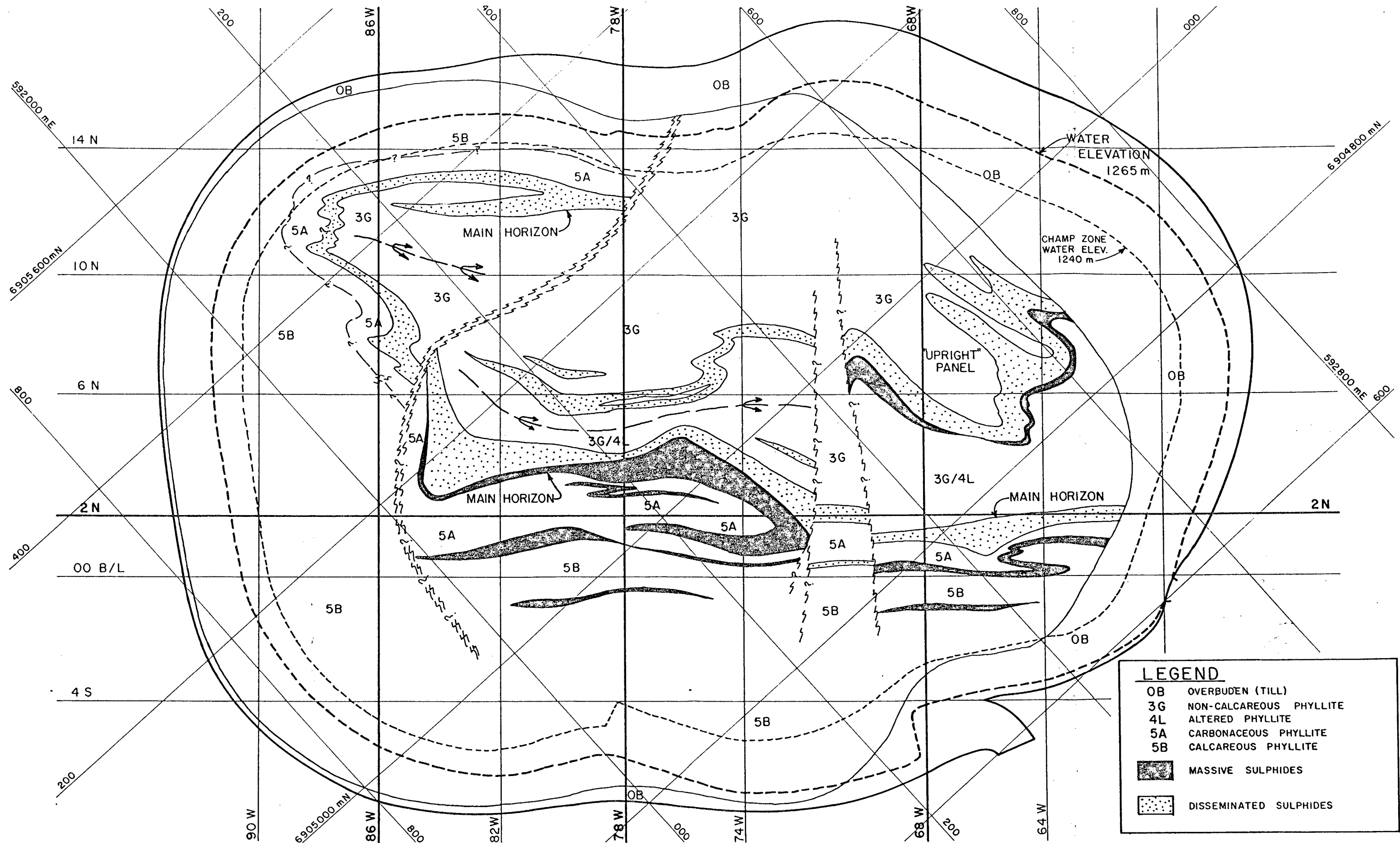
GRUM DEPOSIT
CROSS SECTION 68W

LEGEND	
OB	OVERBURDEN (TILL)
3G	NON-CALCAREOUS PHYLLITE
4L	ALTERED PHYLLITE
5A	CARBONACEOUS PHYLLITE
5B	CALCAREOUS PHYLLITE
	MASSIVE SULPHIDES
	DISSEMINATED SULPHIDES



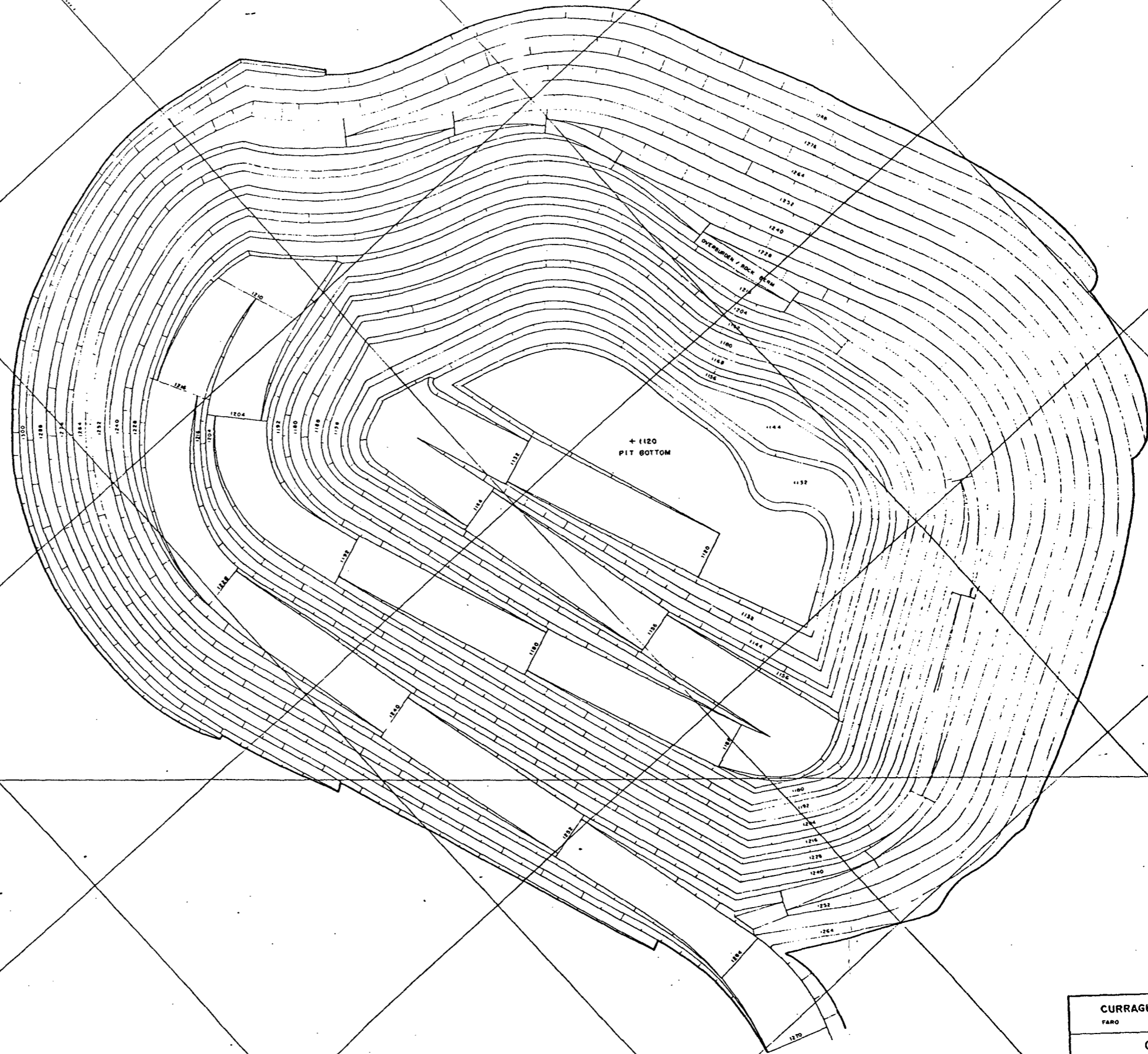
LEGEND	
OB	OVERBUDEN (TILL)
3G	NON-CALCAREOUS PHYLLITE
4L	ALTERED PHYLLITE
5A	CARBONACEOUS PHYLLITE
5B	CALCAREOUS PHYLLITE
	MASSIVE SULPHIDES
	DISSEMINATED SULPHIDES

GRUM DEPOSIT CROSS SECTION 78W		CURRAGH RESOURCES INC.	
		1:2000	FIGURE 2.10



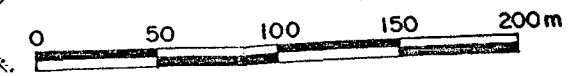
LEGEND	
OB	OVERBUDEN (TILL)
3G	NON-CALCAREOUS PHYLLITE
4L	ALTERED PHYLLITE
5A	CARBONACEOUS PHYLLITE
5B	CALCAREOUS PHYLLITE
	MASSIVE SULPHIDES
	DISSEMINATED SULPHIDES

GRUM OPEN PIT GEOLOGY		CURRAGH RESOURCES INC.	
		1:3500	FIGURE 2.15

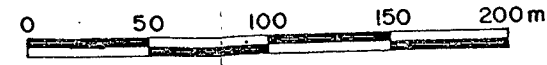
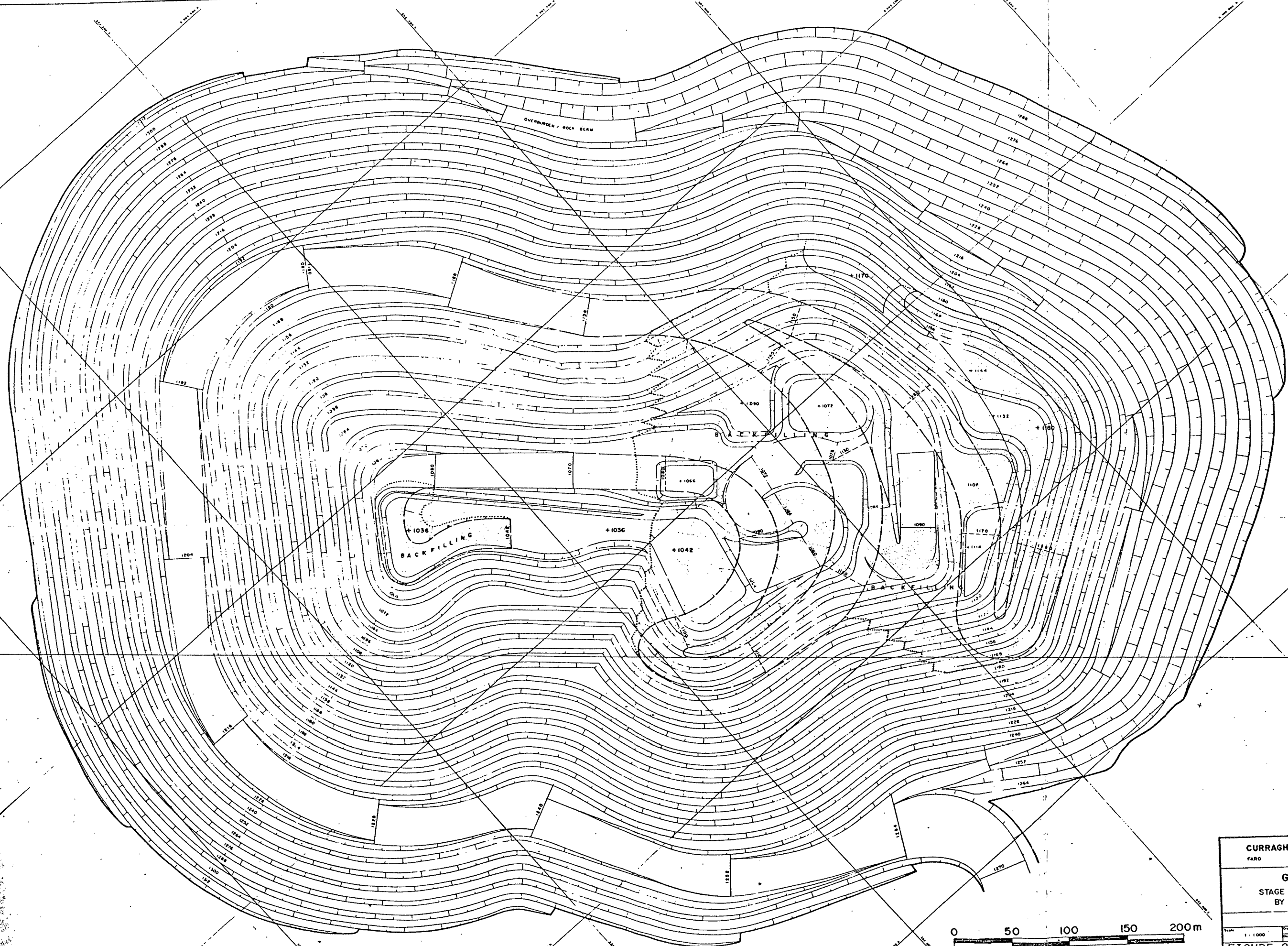


CURRAGH RESOURCES INC.	
FARO	YUKON TERRITORY
GRUM PIT	
STAGE I PIT LIMITS	
BY 12m BENCHS	
Scale: 1:1000	Drawn by: S. C. BOORSE
Date: MAY 1985	Checked by: J. VINTILA

FIGURE 2.35



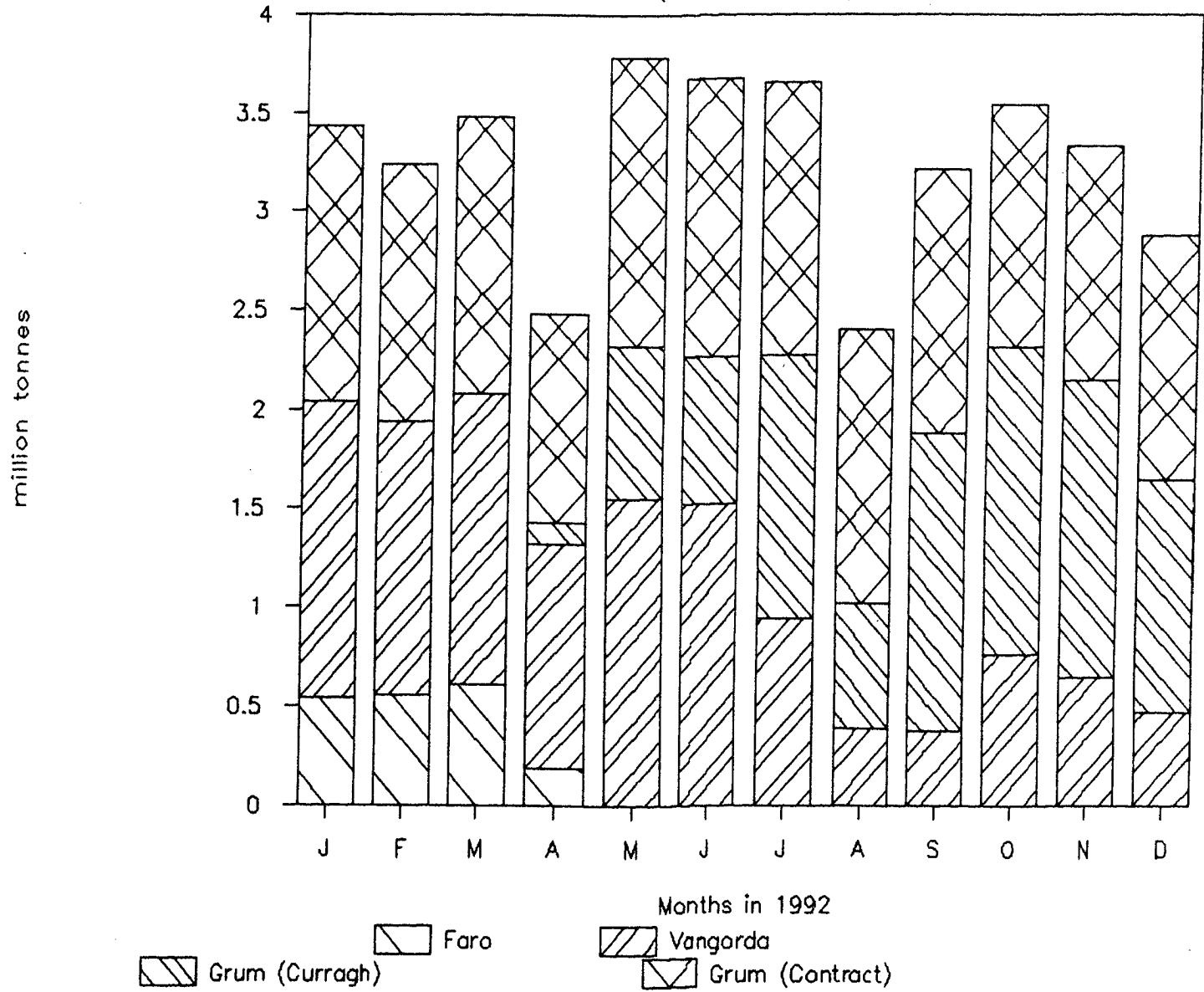
CURRAGH RESOURCES INC.	
FARO	YUKON TERRITORY
GRUM PIT	
STAGE II PIT LIMITS	
BY 12m BENCHES	
Scale 1:1000	Drawn by B. C. BOORSE
Date MAY 1988	Checked by I. WITELA
FIGURE 2.36	



CURRAGH RESOURCES INC.	
FARO	TUKON TERRITORY
GRUM PIT	
STAGE III PIT LIMITS.	
BY 12m BENCHS	
Scale 1:1000	Drawn by B. C. BOORSE
Date MAY 1988	Designed by VINTLA
FIGURE 2.37	

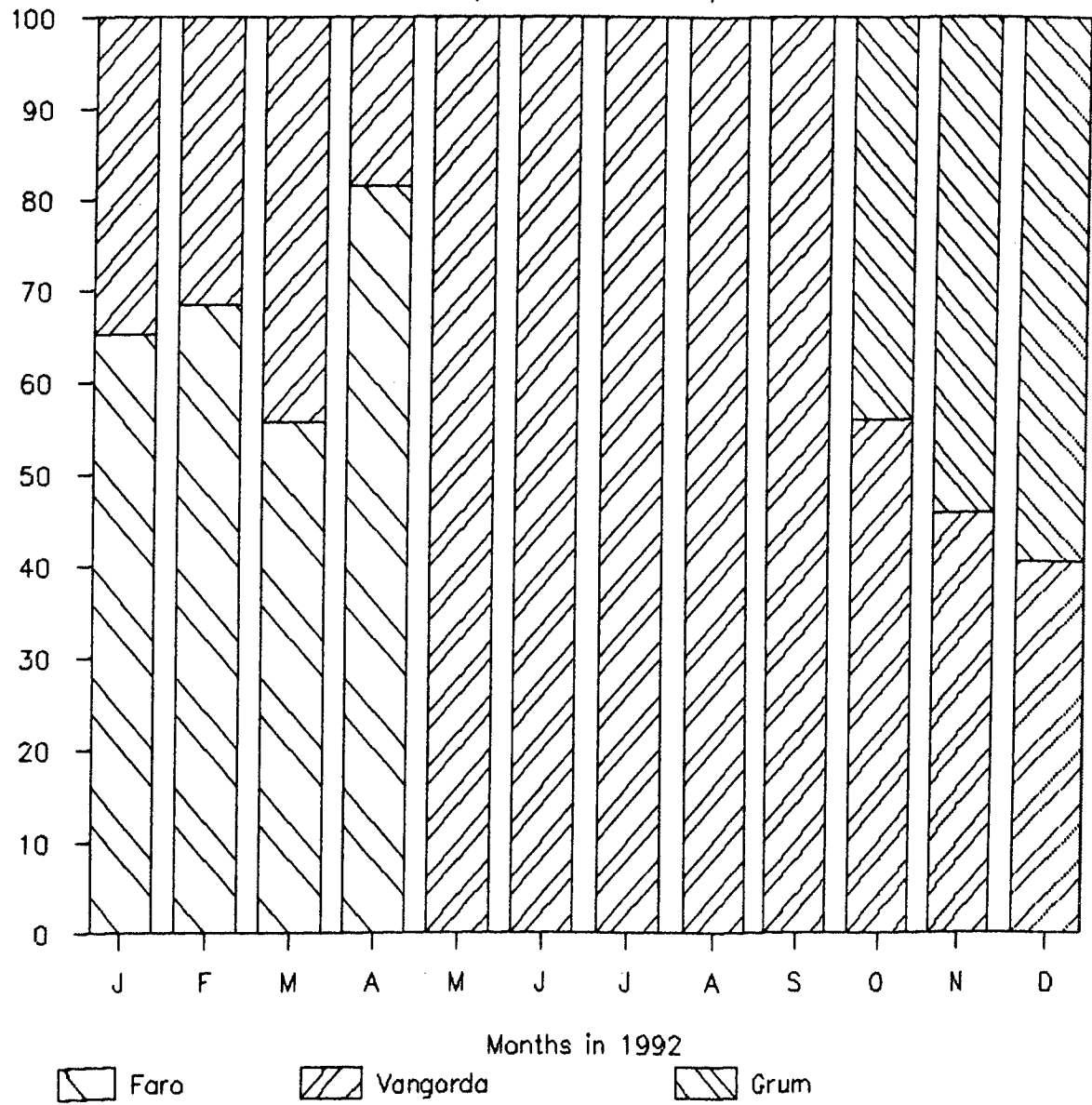
Total Material Mined per Deposit

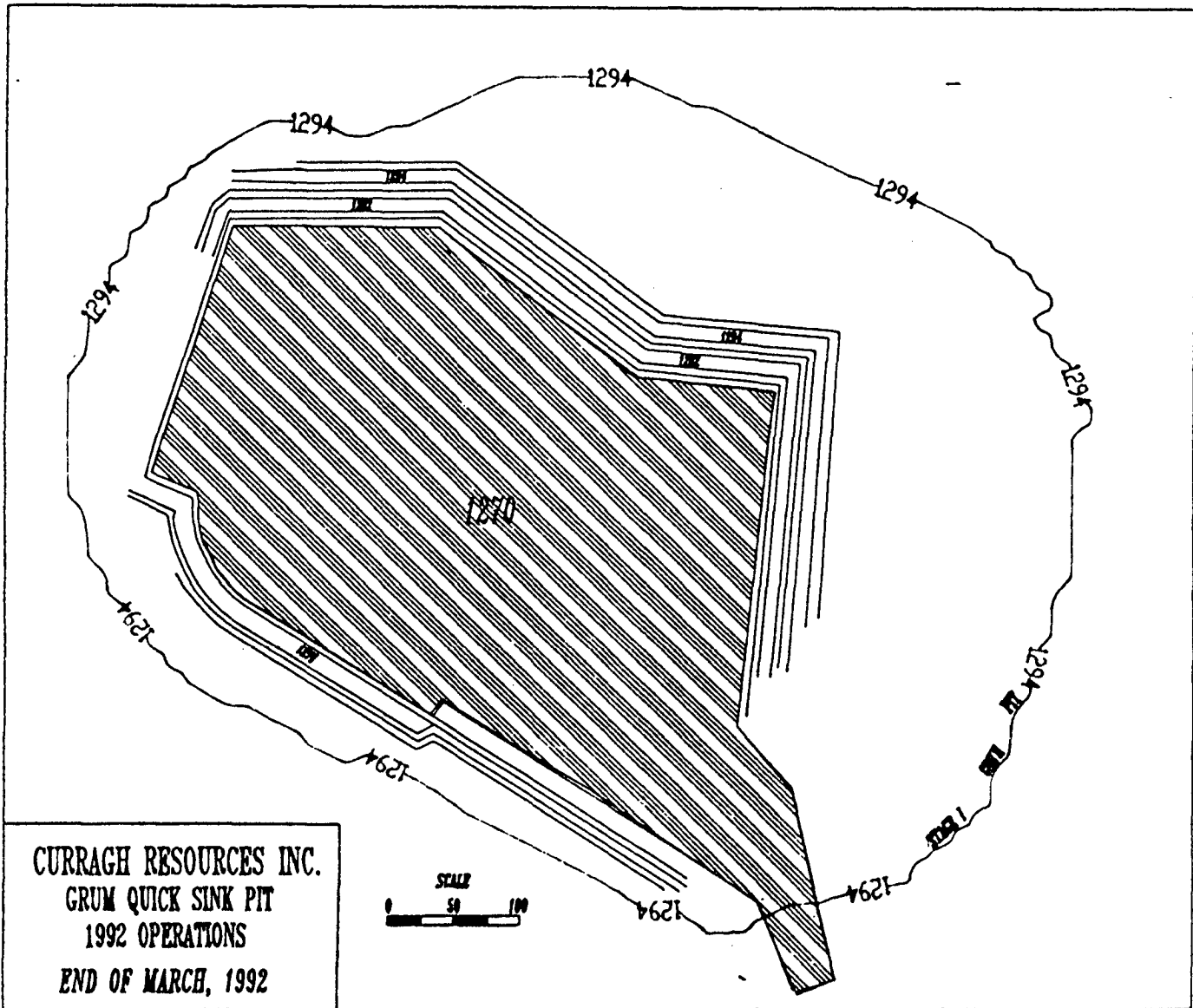
(million tonnes)



MILL FEED BY ORE DEPOSIT

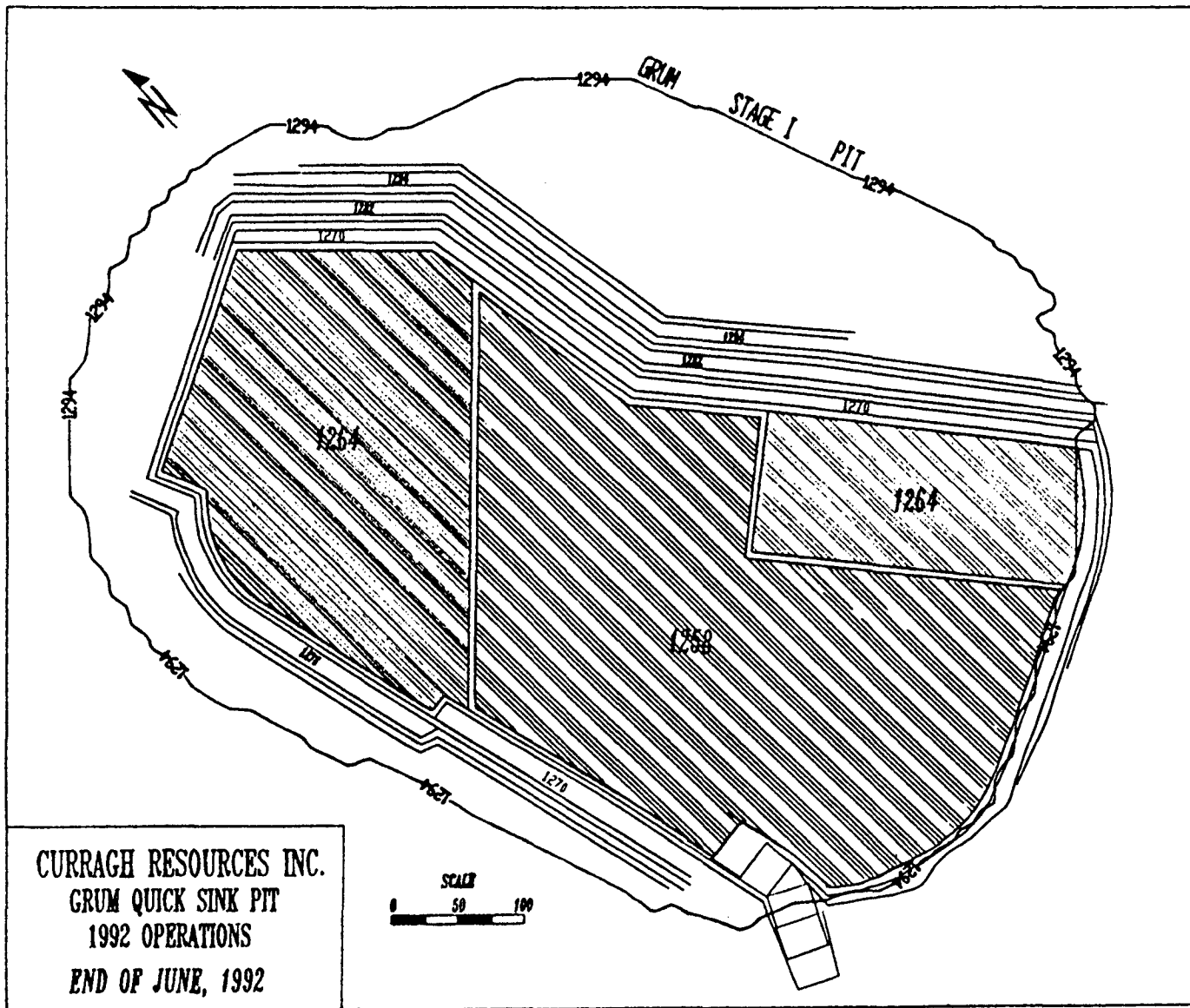
(in % of total ore)





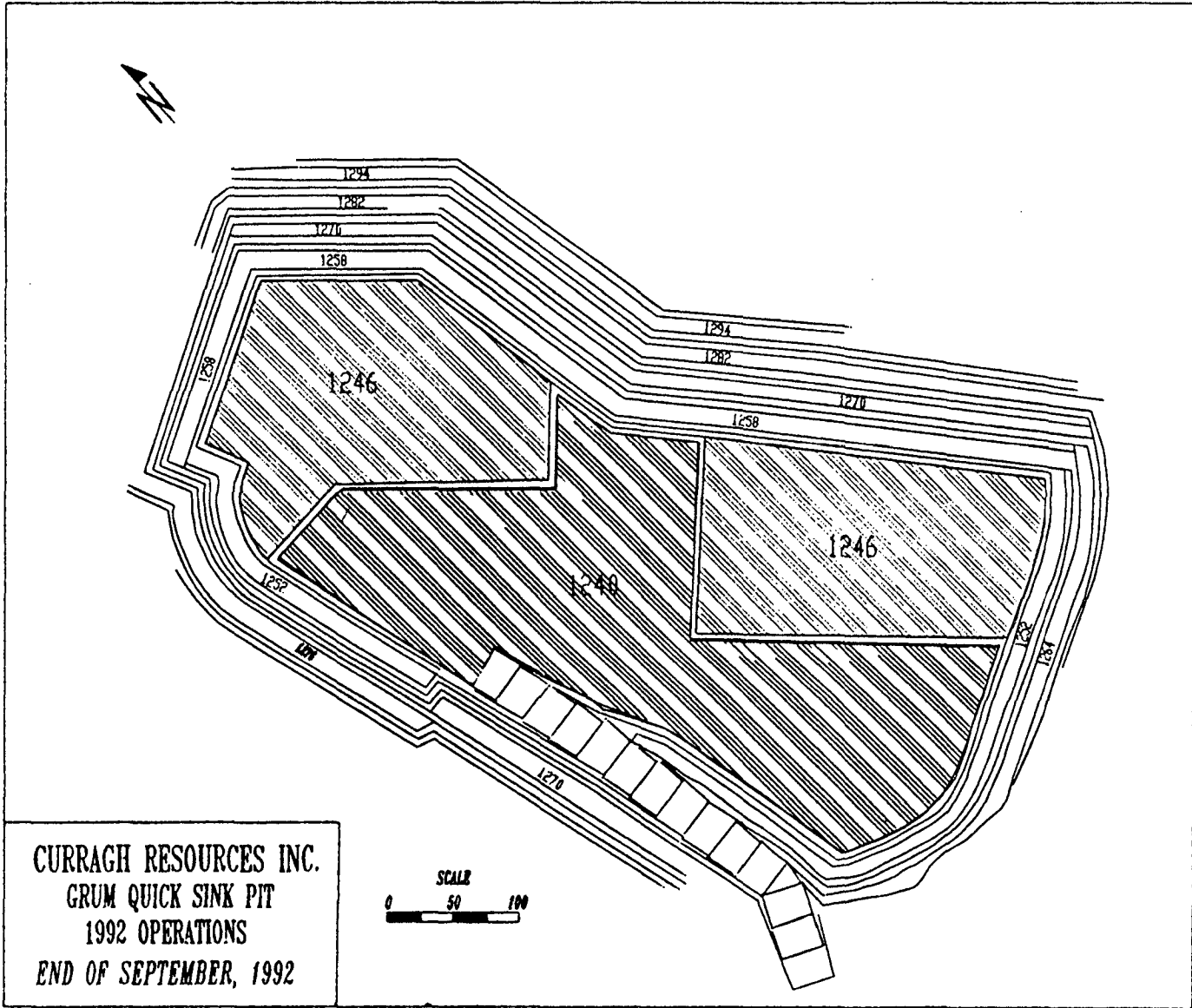
CURRAGH RESOURCES INC.
GRUM QUICK SINK PIT
1992 OPERATIONS
END OF MARCH, 1992





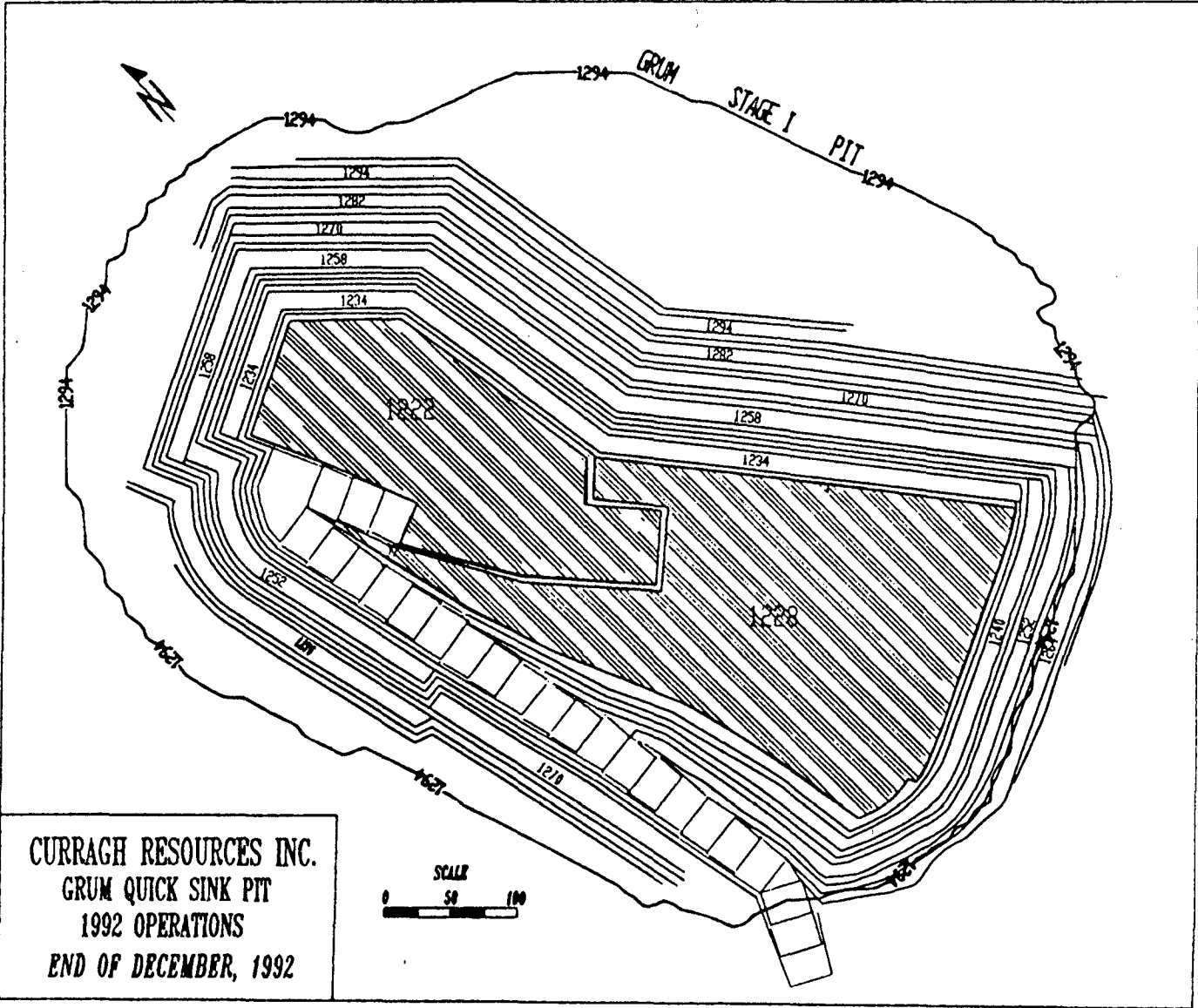
CURRAGH RESOURCES INC.
GRUM QUICK SINK PIT
1992 OPERATIONS
END OF JUNE, 1992

SCALE
0 50 100

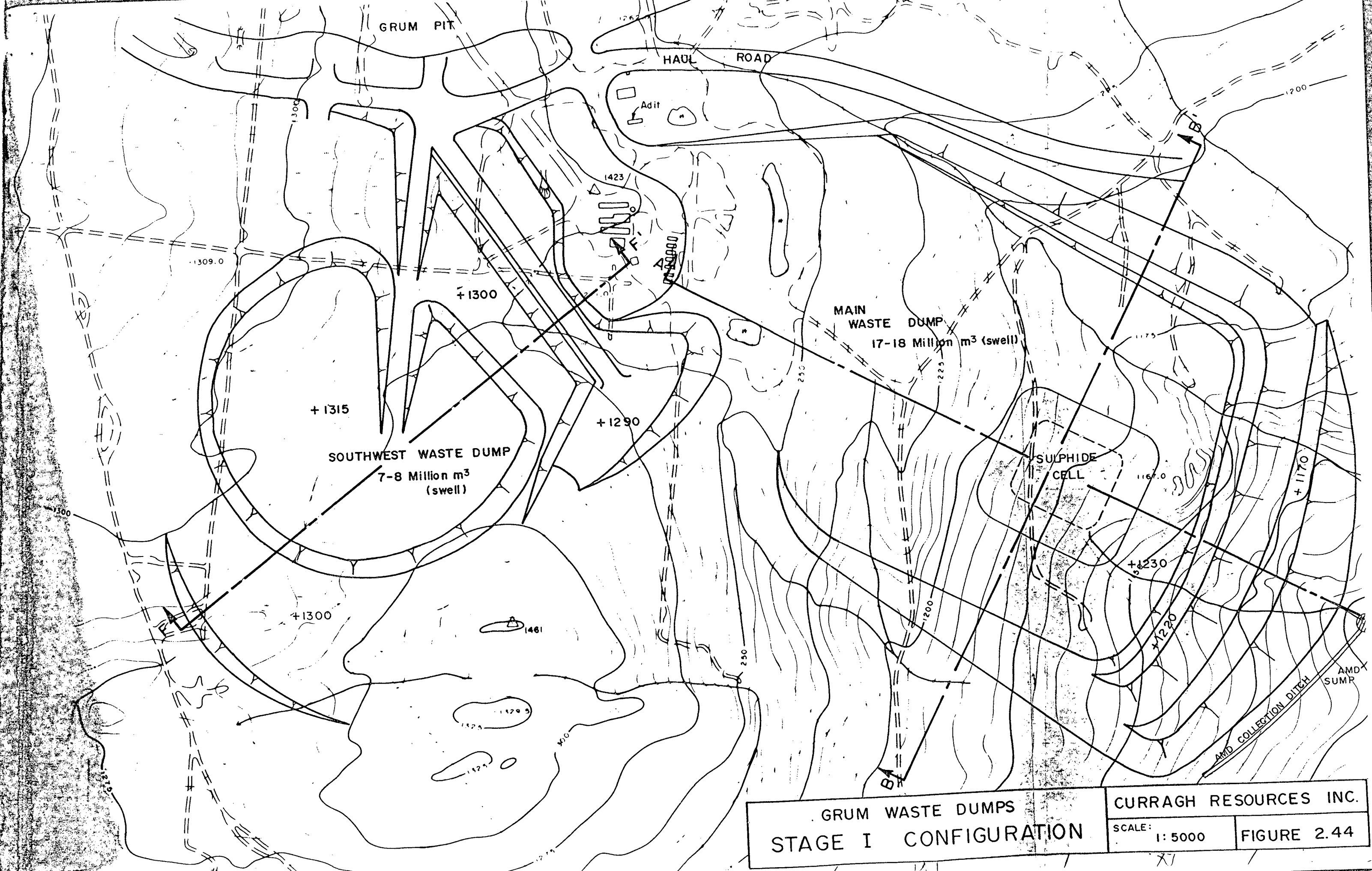


CURRAGH RESOURCES INC.
GRUM QUICK SINK PIT
1992 OPERATIONS
END OF SEPTEMBER, 1992

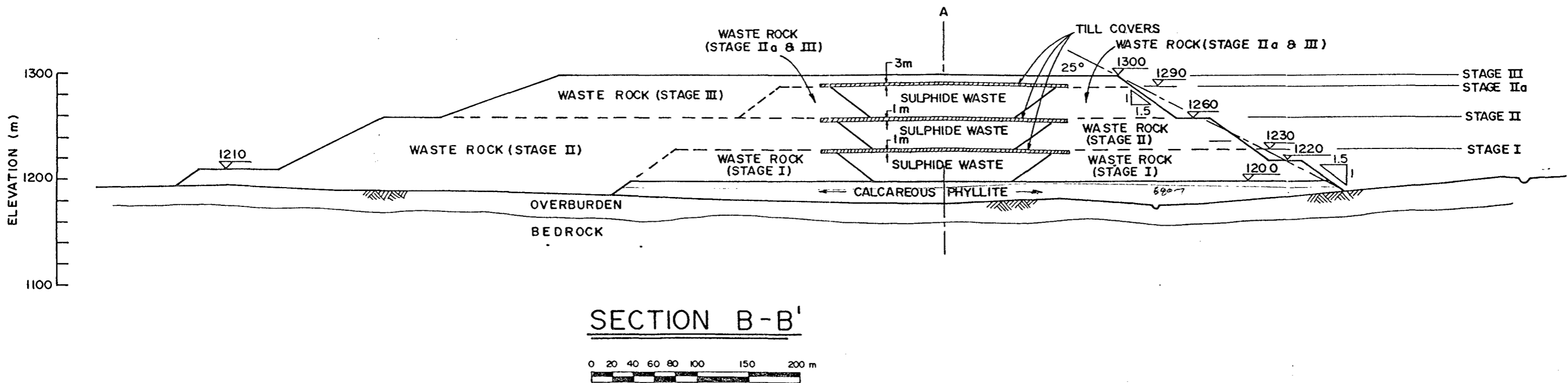
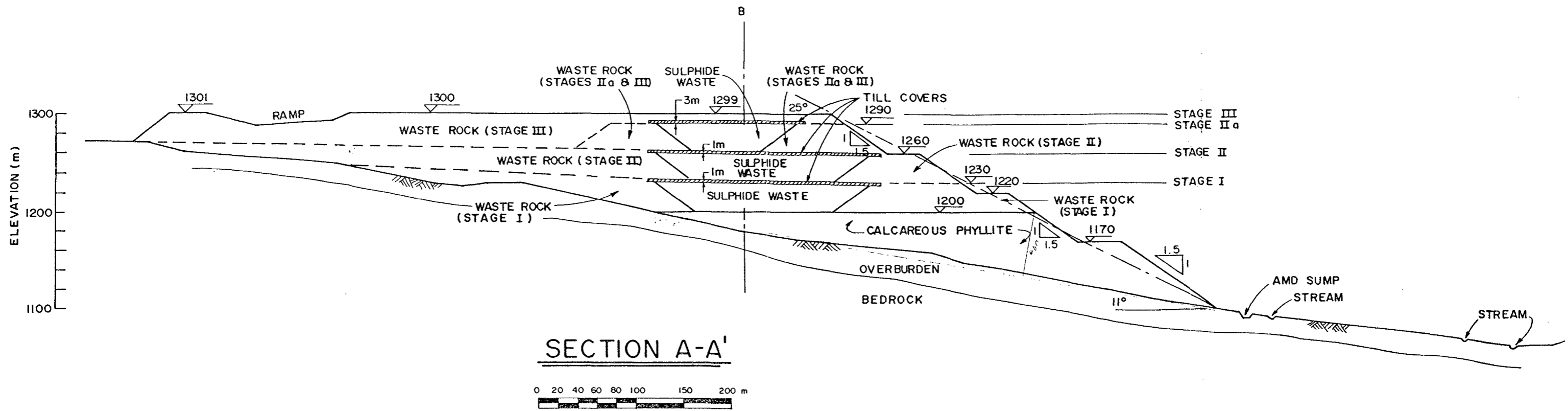




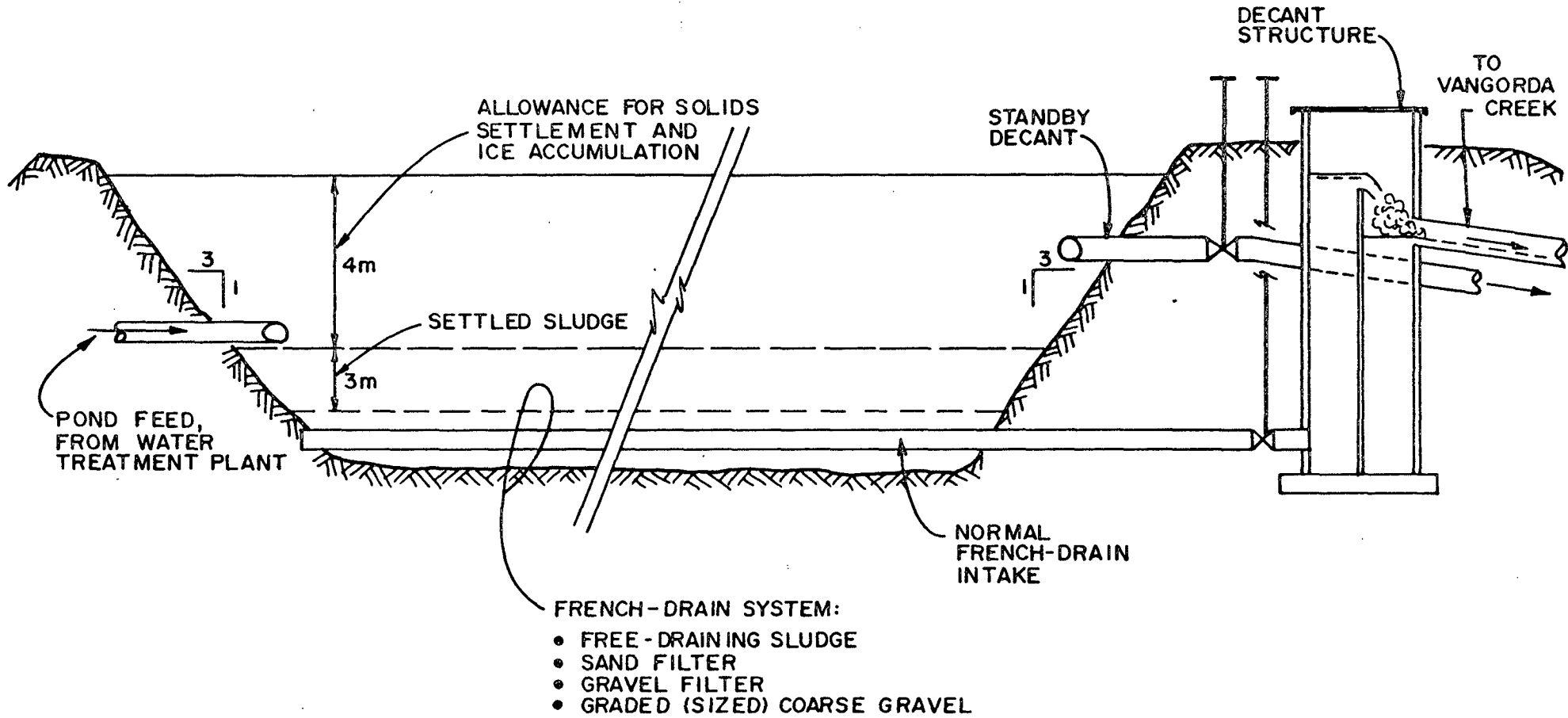
CURRAGH RESOURCES INC.
GRUM QUICK SINK PIT
1992 OPERATIONS
END OF DECEMBER, 1992



GRUM WASTE DUMPS STAGE I CONFIGURATION		CURRAGH RESOURCES INC.	
SCALE: 1: 5000		FIGURE 2.44	



GRUM WASTE DUMPS		CURRAGH RESOURCES INC.	
SECTIONS A-A' AND B-B'		AS SHOWN	FIGURE 2.47



SLUDGE SETTLING/STORAGE POND TYPICAL SECTION	CURRAGH RESOURCES INC.	
	SCALE : NOT TO SCALE	FIGURE 2.56