

Square: Grid North
 Star: True North
 Arrow: Magnetic North

Angles presented are approximate mean deviations for centre of NTS sheet. Use diagram for reference only.

Grid North - True North : 1.59°
 Grid North - Magnetic North : 30.35°
 Annual change decreasing 4.1°

TOTAL MAGNETIC INTENSITY

Total magnetic intensity contour data, measured by a cesium high sensitivity magnetometer at an average sensor elevation of 45m, and corrected for diurnal variation.

Map contours are in nanoTeslas, and are multiples of those listed below:

- 2 nT
- 10 nT
- 50 nT
- 250 nT
- 1000 nT

FLIGHT PATH

Navigation and flight path recovery was conducted using a Global Positioning System (GPS) satellite navigation system.

Lines were flown at an azimuth of 30 - 210°, with an average line spacing of 200m.

Average helicopter-terrain clearance of 60m was monitored by radar and barometric altimeters.

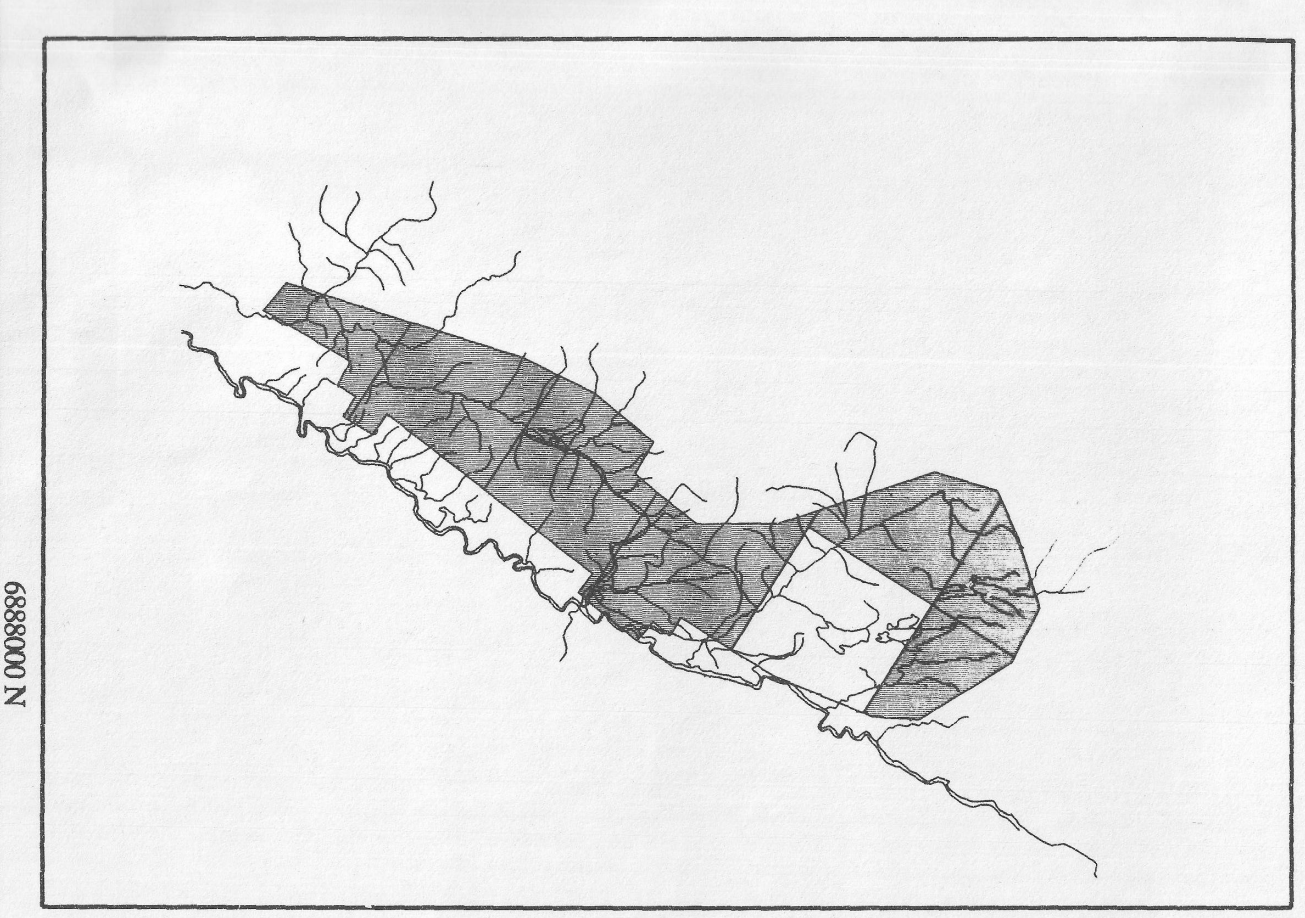
EM ANOMALIES

EM anomalies selected by computer algorithm and manually confirmed. Selection is based on the response correlation to theoretical sources such as a steeply dipping conductor.

Calculation of conductance is based on the response of the 4600 Hz coaxial data, and forms the basis for anomaly classification.

Letter codes are used to identify individual anomalies on a line, and the inphase amplitude of the 4600 Hz response is annotated opposite.

- 0 - 1 mhos
- 1 - 2 mhos
- 2 - 4 mhos
- 4 - 8 mhos
- 8 - 16 mhos
- 16 - 32 mhos
- > 32 mhos

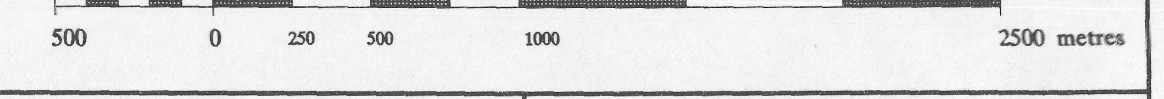


ANVIL RANGE MINING CORPORATION

TOTAL MAGNETIC INTENSITY

FARO, G6
 YUKON

SCALE 1:24 000



Date Flown : JUNE - JULY 1996

NTS : 105/K/2,3,6,7

Project : J9650 Map Ref : 1 - 3