

Meter No. 251

UNITED GEOPHYSICAL

Date OCT 15 1964

Constant 0 1022(2)

FIELD GRAVITY METER DATA

Operator T. RICH

Area SEA GROUP YT.

Sta. No.	Time	Reading	Drift	Observed Gravity	Weather and Remarks
BASE D	12 ⁵⁶	1618.3			
BASE F	1 ¹⁷	1640.8	D -0.23.		(to 54) At intersection of Line 56W & BL-10N
BASE G	1 ³⁷	1701.2	D -0.45. F -0.11		30' N of Intersection of Line 72W & BL-10N.
BASE E	1 ⁵¹	1641.0	F -0.19 G -0.02		Both Bases marked with Hub - Tripod; seat.
F	2 ¹⁰	1641.1	G -0.04 E +0.06		
G	2 ²²	1701.2 ⁵	E +0.10 F -0.03		Base differ calculated :- D-F-G-E ; F-G-E-F; G-E-F-G ; E-F-G-E etc
E	2 ³⁷	1640.8 ³	F -0.06 G -0.02		
F	2 ⁵⁴	1641.2	G -0.04 E +0.02		
G	3 ⁰⁸	1701.3	E +0.03. F +0.02		
E	3 ²⁶	1640.8	F +0.05. G 0.00		
G	3 ⁴⁰	1701.3	F +0.08. E +0.07		
F	3 ⁵²	1641.1	E +0.13		
E	4 ⁰⁵	1640.6			

Meter No. 251

UNITED GEOPHYSICAL

Date OCT. 25th 1964

Constant .1022(2)

FIELD GRAVITY METER DATA

Operator A. HARMAN

MILICALS / DIVISION

Area SEA GROUP Y.T.

Sta. No.	Time	Reading	Drift	Observed Gravity	H.I.	Weather and Remarks
BASE @ ^(C) 32W	1:29	1628.0		95.99(9)	+0.35	
39 40W 30s	1:54	1765.9	-0.2	110.07	+0.45	
38 39W 30s	1:58	1766.4	-0.2	110.12	+1.25	
37 38W 30s	2:01	1764.5	-0.2	109.93	+1.20	
36 37W 30s	2:04	1764.0	-0.2	109.88	+1.10	
35 36W 30s	2:07	1763.4	-0.2	109.82	+0.95	
34 35W 30s	2:10	1761.5	-0.3	109.61	+1.05	
33 34W 30s	2:13	1760.9	-0.3	109.55	+1.00	
032W 33W 30s = 30s	2:16	1758.5	-0.3	109.31	+1.00	
30 32W 29s	2:19	1751.1	-0.3	108.55	+1.15	
29 32W 28s	2:22	1740.7	-0.3	107.49	+1.10	
28 32W 27s	2:25	1732.6	-0.4	106.65	+1.05	
27 32W 26s	2:28	1725.5	-0.4	105.92	+1.05	
26 32W 25s	2:31	1715.7	-0.4	104.92	+1.00	
25 32W 24s	2:34	1705.6	-0.4	103.89	+1.10	
24 32W 23s	2:37	1698.9	-0.4	103.20	+1.10	
23 32W 22s	2:40	1692.8	-0.5	102.57	+1.10	
22 32W 21s	2:43	1694.5	-0.5	102.74	+1.10	
21 32W 20s	2:46	1681.9	-0.5	101.26	+1.25	
20 32W 19s	2:50	1664.6	-0.5	99.69	+0.95	
19 32W 18s	2:53	1664.8	-0.5	99.71	+1.15	
18 32W 17s	2:56	1650.5	-0.6	98.24	+0.95	
17 32W 16s	2:58	1647.3	-0.6	97.91	+1.10	
16 32W 15s	3:01	1636.8	-0.6	96.94	+1.10	
032W 15s = 32W 14s	3:05	1624.3	-0.6	95.56	+1.35	
(C) BASE @ 32W	3:17	1628.7	-0.7/108 6481		+0.35	

Meter No. 251

UNITED GEOPHYSICAL

Date OCT. 25th 1964

Constant 1022 (2)

FIELD GRAVITY METER DATA

Operator A. HARMAN

MILLIGALS / DIVISION

Area SEA GROUP Y.T.

Sta. No.	Time	Reading	Drift	Observed Gravity	H.I.	Weather and Remarks
(C) BASE @ 32W	11:50	1627.2		95.99(9)	+0.35	
^{40W} 31 30S	12:14	1765.3	-2	110.09	+0.55	
^{40W} 30 29S	12:19	1756.0	-2	109.14	+1.05	
^{40W} 29 28S	12:23	1750.9	-3	108.61	+1.00	
^{40W} 28 27S	12:26	1745.6	-3	108.07	+1.10	
^{40W} 27 26S	12:31	1737.0	-3	107.19	+1.15	
^{40W} 26 25S	12:35	1724.3	-4	106.09	+1.10	
^{40W} 25 24S	12:38	1715.2	-4	104.95	+0.95	
^{40W} 24 23S	12:42	1702.1	-4	103.61	+0.90	
^{40W} 23 22S	12:45	1692.9	-4	102.67	+1.10	
^{40W} 22 21S	12:49	1688.5	-5	102.21	+1.20	
^{40W} 21 20S	12:52	1686.9	-5	102.05	+1.10	
^{40W} 20 19S	12:55	1681.2	-5	101.47	+1.15	
^{40W} 19 18S	12:58	1667.2	-5	100.04	+1.20	
^{40W} 18 17S	1:03	1655.6	-6	98.84	+1.20	
^{40W} 17 16S	1:06	1648.2	-6	98.08	+1.20	
^{40W} 16 15S	1:09	1653.3	-6	98.61	+0.95	
^{40W} 15S = 14S	1:12	1656.7	-7	98.94	+0.90	
(C) BASE @ 32W	1:29	1628.0	-8/199 8080		+0.35	
	120/21					

Meter No. 251

UNITED GEOPHYSICAL

Date Nov. 10, 1964

Constant .1022 (2)

FIELD GRAVITY METER DATA

Operator A. HARMAN

MILLIGALS / DIVISION

Area SEA-GROUP Y.T.

Sta. No.	Time	Reading	Drift	Observed Gravity	H.I.	Weather and Remarks	
BASE D	9:21	1640.1		96.527			
						Exchange	Boys day
⊙ 48W 25N 48W	9:40	1757.5	-0.1	108.52	+0.80	+0.35	+0.02
48W 24N 48W	9:45	1741.0	-0.1	106.83	+0.90	+0.75	+0.04
48W 23N 48W	9:48	1720.2	-0.1	104.70	+1.00	+0.70	+0.04
48W 22N 48W	9:51	1704.5	-0.1	103.10	+0.90	+0.80	+0.05
48W 21N 48W	9:54	1680.6	-0.1	100.66	+1.00	+0.75	+0.04
48W 20N 48W	9:58	1667.3	-0.2	99.29	+1.10	+0.70	+0.03
48W 19N 48W	10:01 1662.1	1662.1	-0.2	98.76	+0.80	+0.75	+0.03
48W 18N 48W	10:03	1660.3	-0.2	98.57	+1.00	+0.70	+0.03
48W 17N 48W	10:06	1662.9	-0.2	98.84	+1.05	+0.75	+0.03
48W 16N 48W	10:09	1666.6	-0.2	99.22	+1.00	+0.35	+0.02
⊙ 48W 15N 48W	10:12	1665.4	-0.2	99.09	+1.05	+1.05	+0.06
48W 14N 48W	10:14	1662.6	-0.2	98.81	+0.95	+0.60	+0.04
48W 13N 48W	10:17	1664.8	-0.2	99.03	+1.05	+0.65	+0.04
48W 12N 48W	10:20	1662.0	-0.3	98.73	+0.90	+0.65	+0.04
48W 11N 48W	10:23	1660.3	-0.3	98.56	+0.85	+0.45	+0.03
⊙ 48W 10N 48W	10:26	1659.6	-0.3	98.49	+1.10	+0.75	+0.04
48W 9N 48W	10:28	1659.8	-0.3	98.51	+0.90	+0.60	+0.04
48W 8N 48W	10:31	1659.6	-0.3	98.49	+1.15	+0.85	+0.05
48W 7N 48W	10:33	1659.9	-0.3	98.52	+0.90	+1.40	+0.08
48W 6N 48W	HUB	BURIED	NO READING			-	
48W 5N 48W	10:36	1659.0	-0.3	98.43	+1.25	+0.75	+0.04
48W 4N 48W	10:40	1658.2	-0.3	98.35	+1.00	+0.80	+0.05
48W 3N 48W	10:43	1654.8	-0.4	97.99	+1.20	+0.75	+0.04
48W 2N 48W	10:46	1648.4	-0.4	97.33	+0.90	+0.40	+0.03
48W 1N 48W	10:49	1642.4	-0.4	96.72	+0.90	+0.45	+0.03
BASE D	10:53	1640.5	-0.4/92. 4398	96.527			

STATION	TIME	READING	DRIFT	OBSERVED GRAVITY	H.I.	REMARKS
OCT. 6/64						
BASE E	12:08	1643.1		98.78(6)		
63 W OS	12:13	1642.0	-0.1	98.66	+65	
56 W OS	12:19	1631.5	-0.1	97.59	+30	
57 W OS	12:22	1634.0	-0.1	97.85	+60	37
58 W OS	12:27	1636.7	-0.2	98.11	+60	
59 W OS	12:30	1637.5	-0.2	98.19	+70	
60 W OS	12:33	1639.2	-0.3	98.36	+35	
61 W OS	12:37	1641.5	-0.3	98.59	+70	
62 W OS	12:40	1641.4	-0.3	98.58	+75	62
63 W OS	12:45	1642.5	-0.4	98.68	+70	
BASE E	12:48	1643.5	-0.4/40 0.100	98.78(6)		
OCT. 6. OCT. 6./64						
BASE E	12:48	1643.5		98.78(6)		
65 W OS	12:52	1645.2		98.96	+70	
80 W OS	1:04	1704.0		104.97	+50	80
79 W OS	1:09	1697.2	-0.1	104.26	+75	
78 W OS	1:12	1689.5	-0.1	103.48	+65	
77 W OS	1:15	1682.9	-0.1	102.80	+70	
76 W OS	1:19	1674.6	-0.1	101.95	+55	
75 W OS	1:22	1667.1	-0.1	101.19	+50	75
74 W OS	1:26	1659.7	-0.1	100.43	+70	
73 W OS	1:30	1654.1	-0.1	99.86	+55	
72 W OS	1:33	1650.8	-0.1	99.52	+55	72
71 W OS	1:37	1648.3	-0.1	99.27	+60	
70 W OS	1:40	1647.5	-0.1	99.18	+55	70
69 W OS	1:43	1648.5	-0.2	99.28	+55	
68 W OS	1:46	1647.1	-0.2	99.14	+60	
67 W OS	1:48	1647.4	-0.2	99.16	+60	
66 W OS	1:52	1645.6	-0.2	98.98	+70	
65 W OS	1:55	1645.0	-0.2	98.92	+75	65
BASE E	2:00	1643.7	-0.2/72 277	98.78(6)		

STATION	TIME	READING	DRIFT	OBSERVED GRAVITY	H.I.	REMARKS
OCT. 6/64.						
BASE E	2:00	1643.7		98.78(6)		
56W OS	2:09	1632.5		97.64	+30	
BASE F	2:19	1644.4		98.85		
9N 56W	2:23	1645.1		98.93	+10	
56W						
8N	2:28	1645.6		98.98	+10	
56W						
7N	2:31	1644.9	-0.1	98.90	+30	
56W						
6N	2:34	1640.0	-0.1	98.40	+45	
56W						
5N	2:38	1636.0	-0.1	97.99	+45	
56W						
4N	2:41	1633.0	-0.1	97.68	+50	
56W						
3N	2:44	1634.7	-0.1	97.86	+55	
56W						
2N	2:47	1634.3	-0.1	97.81	+40	
56W						
1N	2:50	1633.0	-0.1	97.68	+50	
56W						
ON	2:53	1632.7	-0.1	97.65	+30	
BASE E	3:00	1643.8	-0.1/60	98.78(6)		
OCT. 6/64						
BASE E	3:00	1643.8		98.78(6)		
64W						
1N	3:04	1643.5		98.76	+65	
64W						
10N	3:14	1667.1	-0.1	101.16	+40	
64W						
9N	3:19	1665.4	-0.1	100.98	+10	
64W						
8N	3:22	1662.3	-0.1	100.67	0.0	
64W						
7N	3:25	1661.8	-0.1	100.62	+30	
64W						
6N	3:28	1658.3	-0.1	100.26	+35	
64W						
5N	3:30	1656.0	-0.1	100.02	+60	
64W						
4N	3:34	1653.7	-0.1	99.79	+60	
64W						
3N	3:37	1651.0	-0.2	99.50	+80	
64W						
2N	3:40	1647.6	-0.2	99.15	+60	
64W						
1N	3:44	1643.6	-0.2	98.75	+65	
BASE E	3:47	1644.0	-0.2/47 46	98.78(6)		

STATION	TIME	READING	DRIFT	OBSERVED GRAVITY	H.I.	REMARKS
OCT. 7/64						
BASE E	10:40	1643.2		98.78(6)		
56W						
0 OS	10:46	1631.7	-0.1	97.60	+30	
0 48W						
55	10:55	1615.5	-0.3	95.92	+50	
49W						
55	11:00	1618.5	-0.4	96.22	+55	
50W						
55	11:03	1621.0	-0.4	96.48	+35	
51W						
55	11:06	1621.4	-0.5	96.51	+45	51
52W						
55	11:10	1622.6	-0.5	96.63	+40	
53W						
55	11:13	1622.3	-0.6	96.59	+65	
54W						
55	11:17	1622.1	-0.7	96.56	+50	
55W						
55	11:20	1622.2	-0.7	96.57	+60	55
56W						
0 55	11:24	1622.8	-0.8	96.62	+50	
56W						
45	11:28	1627.0	-0.9	97.04	+60	
56W						
35	11:32	1628.8	-1.0	97.21	+30	
56W						
25	11:35	1630.2	-1.0	97.35	+70	
56W						
15	11:39	1632.1	-1.1	97.54	+55	
56W						
0 OS	11:43	1632.8	-1.2	97.60	+30	
BASE E	11:51	1644.5	-1.3/71 103.	98.78(6)		
OCT. 7/64						
BASE E	12:04	1644.6		98.78(6)		
64W 15	12:10	1643.7		98.69	+60	
57W						
55	12:21	1626.5	+0.1	96.95	+70	57
58W						
55	12:25	1626.8	+0.1	96.98	+80	
59W						
55	12:29	1628.1	+0.1	97.11	+60	
60W						
55	12:32	1630.0	+0.1	97.30	+75	60
61W						
55	12:35	1634.9	+0.2	97.81	+65	
62W						
55	12:39	1642.2	+0.2	98.56	+70	62
0 63W = 64W						
55 = 55	12:43	1652.4	+0.2	99.60	+40	64
64W						
45	12:47	1645.7	+0.2	98.92	+65	
64W						
35	12:51	1637.9	+0.2	98.12	+60	
64W						
25	12:55	1640.2	+0.3	98.37	+70	

STATION	TIME	READING	DRIFT	OBSERVED GRAVITY	H.I.	REMARKS
64W 15	12:59	1643.2	+0.3	98.67	+60	
BASE E	1:04	1644.3	+0.3/60	98.78(6)		
OCT. 7/64						
BASE E	1:10	1644.4		98.78(6)		
65W 05	1:13	1646.0		98.95	+65	
0 64W 5S	1:28	1652.8		99.64	+40	64
65W 5S	1:22	1655.8		99.95	+50	
66W 5S	1:26	1655.0		99.87	+65	
67W 5S	1:29	1655.8		99.95	+60	
68W 5S	1:33	1656.4		100.01	+60	
69W 5S	1:36	1659.1		100.29	+60	
70W 5S	1:40	1661.3		100.51	+50	70
71W 5S	1:43	1664.8	-0.1	100.86	+65	
0 72W 5S	1:47	1666.1	-0.1	100.99	+75	+
72W 4S	1:50	1664.9	-0.1	100.88	+80	
72W 3S	1:53	1658.2	-0.1	100.19	+65	
72W 2S	1:56	1651.1	-0.1	99.46	+40	
72W 1S	2:00	1647.4	-0.1	99.08	+60	
0 72W 0S	2:03	1650.9	-0.1	99.44	+55	
65W 0S	2:09	1645.8	-0.1	98.92	+65	
BASE E	2:12	1644.5	-0.1/62	98.78(6)		

STATION	TIME	READING	DRIFT	OBSERVED GRAVITY	H.I.
OCT. 8/64					
BASE F	10:05	1643.2		98.81(2)	
56W 11N	10:08	1643.7		98.86	+45
48W 20N	10:22	1648.3	-0.1	99.32	+70
48W 21N	10:28	1661.3	-0.1	100.65	+25
48W 22N	10:32	1685.3	-0.2	103.10	+10
48W 23N	10:36	1702.2	-0.2	104.82	+30
48W 24N	10:40	1722.3	-0.2	106.88	+15
0 48W 25N	10:45	1738.0	-0.3	108.47	+45
49W 25N	10:50	1739.2	-0.3	108.59	+10
50W 25N	10:53	1734.3	-0.3	108.09	+35
51W 25N	10:57	1735.0	-0.3	108.17	+35
52W 25N	11:00	1732.4	-0.3	107.90	+40
53W 25N	11:04	1729.1	-0.4	107.55	+30
54W 25N	11:07	1727.8	-0.4	107.42	+15
55W 25N	11:11	1725.4	-0.4	107.17	+20
56W 25N	11:15	1720.9	-0.4	106.71	00
56W = 57W 25N = 25N	11:20	1718.0	-0.5	106.41	+80
25 56W 24N	11:25	1703.5	-0.5	104.92	+60
24 56W 23N	11:29	1685.4	-0.5	103.07	+05
23 56W 22N	11:33	1664.9	-0.6	100.97	+30
22 56W 21N	11:36	1653.9	-0.6	99.84	+30
21 56W 20N	11:39	1650.5	-0.6	99.50	+45
20 56W 19N	11:42	1650.9	-0.6	99.54	+55
19 56W 18N	11:45	1653.2	-0.6	99.77	+40
18 56W 17N	11:48	1655.4	-0.6	100.00	00
17 56W 16N	11:52	1654.6	-0.7	99.91	+10
16 56W 15N	11:55	1651.2	-0.7	99.56	+50
15 56W 14N	11:58	1649.0	-0.7	99.33	+60
14 56W 13N	12:01	1647.8	-0.7	99.21	+30
13 56W 12N	12:03	1641.2	-0.7	98.54	+30
12 56W 11N	12:06	1644.4	-0.8	98.85	+50
56W 56W 11N = 10N	12:09	1644.3	-0.8	98.84	+45
BASE F	12:13	1644.0	-0.8/128 625	98.81(2)	

53

19

STATION	TIME	READING	DRIFT	OBSERVED GRAVITY	H.I.	
OCT. 8/64						
BASE F	12:46	1644.3		98.81(2)		
40W 15N	1:01	1636.0		97.96	+30	
41W 15N	1:04	1637.7		98.14	+70	
42W 15N	1:06	1638.5		98.22	+55	4V
43W 15N	1:10	1640.9		98.46	+40	
44W 15N	1:13	1643.0		98.68	+60	
45W 15N	1:15	1646.2		99.01	+50	
46W 15N	1:18	1644.9		98.87	+40	
47W 15N	1:21	1646.9		99.08	+25	
48W 15N	1:25	1647.2	-0.1	99.10	00	
48W 10N	1:30	1640.5	-0.1	98.41	+35	
49W 10N	1:35	1640.8	-0.1	98.44	+35	
50W 10N	1:38	1641.4	-0.1	98.51	+35	
51W 10N	1:41	1639.4	-0.1	98.30	+50	
52W 10N	1:44	1640.2	-0.1	98.38	+40	
53W 10N	1:46	1640.8	-0.1	98.44	+20	
54W 10N	1:49	1641.6	-0.1	98.53	+25	
55W 10N	1:52	1642.1	-0.1	98.58	+30	
56W 10N	1:56	1644.8	-0.1	98.85	+45	
BASE F	1:59	1644.4	-0.1/73.	98.81(2)		
OCT. 8/64						
BASE F	2:04	1644.4		98.81(2)		
56W 25N	2:19	1717.6		106.29	+70	
57W 25N	2:24	1715.4	-0.1	106.06	+45	
58W 25N	2:27	1712.9	-0.1	105.80	00	
59W 25N	2:31	1711.3	-0.1	105.64	+30	
60W 25N	2:37	1708.7	-0.1	105.37	-75	
61W 25N	2:41	1704.1	-0.1	104.90	+40	
62W 25N	2:45	1702.9	-0.1	104.78	+65	
63W 25N	2:49	1702.7	-0.1	104.76	+20	
64W 25N	2:52	1703.4	-0.1	104.83	+30	

STATION	TIME	READING	DRIFT	OBSERVED GRAVITY	H. I.
64W 24N	2:56	1691.4	-0.2	103.60	+4.0
64W 23N	2:59	1678.0	-0.2	102.23	+1.5
64W 22N	3:03	1671.8	-0.2	101.59	+7.0
64W 21N	3:06	1668.7	-0.2	101.28	+4.0
64W 20N	3:09	1670.5	-0.2	101.46	+1.0
64W 19N	3:12	1667.3	-0.2	101.13	+4.0
64W 18N	3:14	1662.5	-0.2	100.64	+5.0
64W 17N	3:17	1660.5	-0.2	100.44	+6.0
64W 16N	3:20	1661.7	-0.2	100.56	+7.5
64W 15N	3:23	1662.4	-0.2	100.63	+5.5
64W 14N	3:26	1663.1	-0.2	100.70	+6.0
64W 13N	3:29	1661.7	-0.3	100.55	+7.0
64W 12N	3:31	1662.3	-0.3	100.61	+4.0
64W 11N	3:34	1664.9	-0.3	100.88	+4.0
64W 10N	3:38	1667.1	-0.3	101.10	+3.5
BASE F	3:45	1644.7	-0.3 / 101	98.81(2)	
OCT. 9/64					
BASE D	10:12	1622.0		96.52(7)	
48W 20N	10:27	1650.0	-0.1	99.38	+7.5
48W 19N	10:34	1644.9	-0.1	98.86	+3.5
48W 18N	10:37	1642.9	-0.1	98.65	+6.0
48W 17N	10:40	1645.4	-0.2	98.90	+6.0
48W 16N	10:43	1649.1	-0.2	99.28	+6.5
48W 15N	10:47	1649.6	-0.2	99.33	00
48W 14N	10:50	1645.8	-0.2	98.94	+3.0
48W 13N	10:54	1648.0	-0.2	99.16	+4.0
48W 12N	10:57	1643.9	-0.3	98.73	+2.5
48W 11N	11:00	1642.5	-0.3	98.59	+4.0
48W 10N	11:04	1641.9	-0.3	98.53	+3.5
48W 9N	11:07	1642.4	-0.3	98.58	+3.0
48W 8N	11:10	1642.6	-0.3	98.60	+3.0
48W 7N	11:14	1643.0	-0.4	98.63	-5.0
48W 6N	11:18	1642.7	-0.4	98.60	00

STATION	TIME	READING	DRIFT	OBSERVED GRAVITY	H.I.
48W 5N	11:21	1641.6	-0.4	98.49	+50
48W 4N	11:25	1641.4	-0.4	98.47	+20
48W 3N	11:28	1637.7	-0.4	98.69	+45
48W 2N	11:32	1630.4	-0.5	97.33	+50
48W 1N	11:35	1624.9	-0.5	96.77	+45
BASE D	11:40	1622.5	$-\frac{0.5}{68}$ 568	96.52(7)	
OCT. 9/64					
BASE D	11:40	1622.5		96.52(7)	
56W 0S	11:48	1633.2	-0.1	97.61	+30
55W 0S	11:52	1632.2	-0.2	97.50	+55
54W 0S	12:00	1629.3	-0.3	97.19	+70
53W 0S	12:04	1627.7	-0.4	97.02	+70
52W 0S	12:07	1626.5	-0.4	96.89	+60
51W 0S	12:09	1625.8	-0.5	96.81	+40
50W 0S	12:12	1624.9	-0.5	96.72	+40
49W 0S	12:14	1623.7	-0.5	96.60	+75
BASE D	12:18	1623.1	$-\frac{0.6}{38}$ 1578	96.52(7)	
OCT. 9/64					
BASE G	12:50	1705.7		104.96(2)	
64W 25N	1:05	1704.8	+0.1	104.88	+30
65W 25N	1:09	1703.9	+0.1	104.79	+10
66W 25N	1:12	1704.8	+0.1	104.88	+10
67W 25N	1:16	1709.5	+0.1	105.36	+25
68W 25N	1:20	1717.2	+0.2	106.16	+20
69W 25N	1:24	1728.8	+0.2	107.34	-60
70W 25N	1:27	1721.9	+0.2	106.64	+40
71W 25N	1:30	1719.5	+0.2	106.39	+40
72W 25N	1:33	1722.0	+0.2	106.65	+45
72W 24N	1:36	1714.9	+0.3	105.93	+35
72W 23N	1:40	1707.2	+0.3	105.15	+35

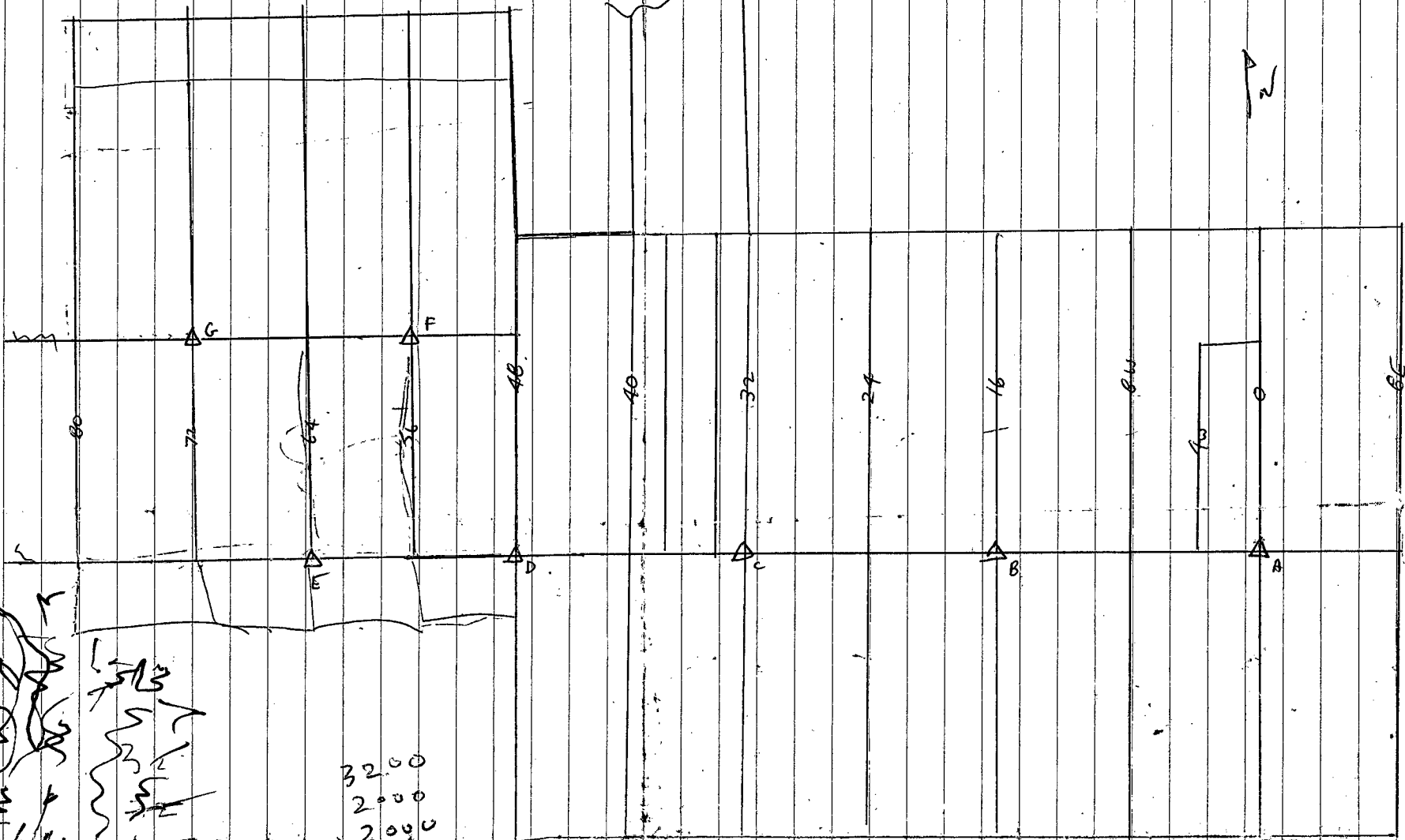
STATION	TIME	READING	DRIFT	OBSERVED G-GRAVITY	H.I.	
72W						
22N	1:43	1699.8	+0.3	104.39	+40	
72W						
21N	1:47	1691.8	+0.3	103.57	+30	
72W						
20N	1:51	1683.9	+0.3	102.76	+40	20
72W						
19N	1:53	1680.7	+0.4	102.45	+40	
72W						
18N	1:56	1683.0	+0.4	102.68	+40	
72W						
17N	1:59	1688.1	+0.4	103.20	+40	
72W						
16N	2:01	1691.4	+0.4	103.54	+45	
72W						
15N	2:04	1691.1	+0.4	103.51	+35	15
72W						
14N	2:08	1693.3	+0.4	103.74	+40	
72W						
13N	2:11	1701.2	+0.5	104.55	+45	
72W						
12N	2:14	1705.6	+0.5	105.00	+50	
72W						
11N	2:17	1707.0	+0.5	105.15	+10	
BASE G	2:20	1705.2	+0.5 / 90 555	104.96(2)		
OCT. 10/64						
BASE G	9:10	1705.6		104.96(2)		
72W						
25N	9:22	1722.2	-0.1	106.65	+25	
73W						
25N	9:27	1732.7	-0.2	107.71	+50	
74W						
25N	9:30	1739.2	-0.2	108.38	+35	
75W						
25N	9:34	1743.6	-0.2	108.83	+10	75
76W						
25N	9:37	1748.3	-0.3	109.30	+35	
77W						
25N	9:41	1751.9	-0.3	109.66	+50	
78W						
25N	9:44	1756.9	-0.3	110.18	+20	
79W						
25N	9:47	1759.4	-0.4	110.42	+30	
80W						
25N	9:50	1762.4	-0.4	110.73	+50	
80W						
24N	9:54	1743.5	-0.4	108.80	+10	
80W						
23N	9:58	1733.4	-0.5	107.75	+20	
80W						
22N	10:03	1726.8	-0.5	107.08	+20	
80W						
21N	10:06	1719.1	-0.6	106.28	+30	
80W						
20N	10:09	1713.2	-0.6	105.68	+55	20
80W						
19N	10:12	1709.0	-0.6	105.25	+40	
80W						
18N	10:14	1702.3	-0.6	104.56	+60	
80W						
17N	10:18	1693.5	-0.7	103.65	+65	

STATION	TIME	READING	DRIFT	OBSERVED GRAVITY	H.I.
80W 16N	10:21	1691.6	-0.7	103.46	+65
80W 15N	10:23	1684.5	-0.7	102.73	+65 15
80W 14N	10:26	1685.0	-0.8	102.77	+50
80W 13N	10:30	1694.5	-0.8	103.75	+50
80W 12N	10:33	1710.9	-0.8	105.42	+50
80W 11N	10:37	1738.3	-0.9	108.21	+30 11
80W 10N	10:40	1742.2	-0.9	108.61	00
BASE G	10:50	1706.6	-1.0/100	104.96(2)	
OCT. 10/64					
BASE G	10:58	1706.7		104.96(2)	
72W 0N	11:09	1652.1	-0.2	99.36	+50
72W 1N	11:24	1663.2	-0.4	100.47	+45
72W 2N	11:27	1670.2	-0.5	101.18	+35
72W 3N	11:30	1675.6	-0.5	101.73	+35
72W 4N	11:32	1679.9	-0.5	102.17	+40
72W 5N	11:35	1680.4	-0.6	102.21	+35
72W 6N	11:38	1685.1	-0.6	102.69	+35
72W 7N	11:41	1689.8	-0.7	103.16	+40
72W 8N	11:44	1696.5	-0.7	103.85	-10
72W 9N	11:47	1701.9	-0.8	104.39	+20
72W 10N	11:50	1707.9	-0.8	105.00	+25
BASE G	11:55	1707.6	-0.9/57 1578	104.96(2)	

STATION	TIME	READING	DRIFT	OBSERVED GRAVITY	H.I.
OCT. 10/64					
BASE G.	12:14	1707.6			
o BASE F.	12:26	1647.6		98.81	+40
57W					
10N	12:30	1650.7		99.13	+35
58W					
10N	12:32	1652.0		99.26	+70
59W					
10N	12:35	1655.9		99.66	+40
60W					
10N	12:37	1659.4		100.02	+35
61W					
10N	12:40	1662.0		100.28	+60
62W					
10N	12:42	1664.5		100.54	+45
63W					
10N	12:45	1666.1		100.70	-.05
64W					
o 10N	12:48	1670.2		101.12	+30
65W					
10N	12:50	1673.9	-0.1	101.49	-.20
66W					
10N	12:53	1678.8	-0.1	101.99	+0.5
67W					
10N	12:56	1683.5	-0.1	102.47	+10
68W					
10N	12:59	1686.7	-0.1	102.80	+10
69W					
10N	1:02	1691.4	-0.1	103.28	00
70W					
10N	1:04	1695.6	-0.1	103.71	+15
71W					
10N	1:07	1700.2	-0.1	104.18	+25
72W					
o 10N	1:09	1708.5	-0.1	105.03	+0.25
			-0.1/47		
BASE G	1:13	1707.8 1707.9		104.96(5)	
OCT. 10/64					
BASE G	1:13	1707.9		104.96(2)	
72W					
o 5S	1:27	1667.9		100.87	+70
73W					
5S	1:32	1671.3		101.22	+55
74W					73
5S	1:35	1675.2		101.62	+70
75W					
5S	1:40	1680.2		102.13	+70
76W					75
5S	1:44	1686.2		102.74	+40
77W					
5S	1:47	1695.1		103.65	+60
78W					
5S	1:50	1703.8		104.54	+75
79W					
5S	1:53	1708.2		104.99	+65
o 80W					
5S	1:55	1709.7		105.15	+60
80W					80
4S	1:58	1705.6		104.73	+50

STATION	TIME	READING	DRIFT	OBSERVED GRAVITY	H.I	
80W 3S	2:01	1705.3	-0.1	104.69	+40	
80W 2S	2:04	1709.1	-0.1	105.07	+40	
80W 05 = 1S	2:08	1707.4	-0.1	104.90	+50	
80W 1N	2:11	1698.7	-0.1	104.01	+70	1
80W 2N	2:14	1696.9	-0.1	103.83	+70	
80W 3N	2:17	1702.9	-0.1	104.44	+60	
80W 4N	2:20	1711.9	-0.1	105.36	+70	
80W 5N	2:23	1718.2	-0.1	106.00	+30	5
80W 6N	2:25	1723.8	-0.1	106.58	+40	
80W 7N	2:28	1731.1	-0.1	107.32	+25	
80W 8N	2:31	1738.5	-0.1	108.08	+30	
80W 9N	2:34	1743.6	-0.1	108.60	00	
80W 10N	2:38	1743.9	-0.1	108.63	00	10
BASE G	2:48	1708.0	-0.1/95	104.96(2)		
OCT. 10/64						
BASE G	2:51	1708.0		104.96(2)		
80W 10N	3:00	1743.5	+0.1	108.60	00	
79W 10N	3:03	1741.9	+0.1	108.44	00	
78W 10N	3:07	1740.8	+0.1	108.33	-45	
77W 10N	3:12	1737.3	+0.1	107.97	+15	
76W 10N	3:14	1735.5	+0.2	107.79	-20	
75W 10N	3:18	1731.6	+0.2	107.39	00	
74W 10N	3:21	1725.5	+0.2	106.77	+05	
73W 10N	3:24	1720.6	+0.2	106.27	.10	
72W 10N	3:28	1713.5	+0.3	105.55	-16	
72W 10N = 10N	3:31	1708.4	+0.3	105.03	+25	
BASE G	3:35	1707.7	+0.3/49 682	104.96(2)		

Swim - BS.



[Handwritten scribbles and notes, including a circled 'A' and various illegible markings.]

3200
 2000
 2000
 10000
 3200

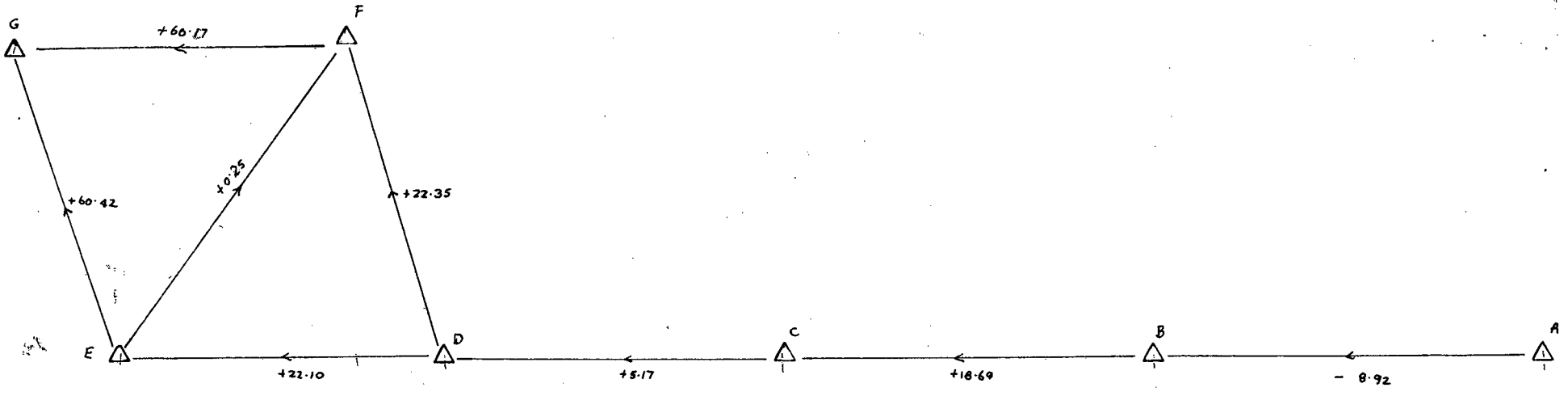
 11400
 2000
 2400

(A) 6000.

done up by
D - 105K-2

BASES SEA GROUP

DIFFS. IN SCALE DIVS.



FIGURES ARE GIVEN TO 2 DECIMALS
THIS WAY - IF YOU MAKE A RUN - SAY B → C
YOU CAN COMPUTE THE DIFF ±0.05 DIVS.