

GRID - BILL / 524N GRAVITY DATA

ORIGINAL FIELD WORK				DENSITY -			DENSITY -			DENSITY -			DENSITY -		
STATION	OBSERVED GRAVITY	ELEV.	LATH CORR.	ELEV. CORR.	TERRA CORR.	BOUGUER GRAVITY	ELEV. CORR.	TERR. CORR.	BOUGUER GRAVITY	ELEV. CORR.	TERR. CORR.	BOUGUER GRAVITY	ELEV. CORR.	TERR. CORR.	BOUGUER GRAVITY
040	106.37	3890	0.72	229.51		36.6	226.82	-83	32.34						
1-W	106.91	3884	.73	229.16		36.8	226.44	-82	32.53						
2	107.30	3879	.74	228.86		36.9	226.14	-82	32.62						
3	107.57	3876	.75	228.68		37.0	225.96	-81	32.72						
4	107.86	3871	.75	228.39		37.0	225.66	-80	32.72						
5	108.36	3864	.76	227.98		37.1	225.24	-80	32.80						
6	108.77	3857	.77	227.56		37.1	224.82	-79	32.80						
7	108.74	3859	.78	227.68		37.2	224.94	-78	32.90						
8	108.89	3858	.79	227.67		37.3	224.88	-78	32.99						
9	108.83	3859	.79	227.68		37.3	224.94	-77	32.0						
10-W	110.16	3838	.80	226.44		37.4	223.18	-76	33.08						
11	109.15	3855	.81	227.45		37.4	224.70	-76	33.09						
12	107.52	3884	.82	229.16		37.5	226.44	-75	33.21						
13	109.52	3850	.83	227.15		37.5	224.4	-74	33.18						
14	109.76	3846	.83	226.91		37.5	224.16	-74	33.18						
15	110.14	3841	.84	226.62		37.6	223.86	-73	33.27						
16	110.66	3832	.85	226.09		37.6	223.32	-72	33.26						
17	111.32	3819	.86	225.32		37.5	222.54	-72	33.14						
18	112.37	3801	.87	224.26		37.5	221.46	-71	33.12						
19	112.92	3790	.87	223.61		37.4	220.8	-70	33.02						
20-W	113.19	3787	.88	223.43		37.5	220.62	-70	33.11						
21	113.22	3788	.89	223.49		37.7	220.68	-69	33.31						
22	112.84	3796	.90	223.96		37.7	221.16	-68	33.32						
23	113.24	3789	.91	223.55		37.7	220.74	-68	33.30						
24	114.46	3770	.91	222.43		37.8	219.6	-67	33.39						
25	115.53	3750	.92	221.25		37.7	218.4	-66	33.27						
26	116.09	3742	.93	220.78		37.8	217.92	-66	33.35						
27	116.30	3740	.94	220.66		37.9	217.80	-65	33.45						
28	116.60	3735	.94	220.37		37.9	217.5	-64	33.46						
29	116.90	3728	.95	219.95		37.8	217.08	-64	33.34						
30-W	118.07	3708	.96	218.77		37.8	215.88	-63	33.32						
31	119.71	3681	.97	217.12		37.8	214.26	-62	33.35						
32	119.90	3675	.98	216.83		37.7	213.90	-62	33.18						
33	120.76	3662	.98	216.06		37.8	213.12	-61	33.27						
34	121.85	3640	.99	214.76		37.6	211.8	-60	33.05						
35	123.20	3617	1.0	213.40		37.6	210.42	-60	32.96						



ORIGINAL FIELD WORK				DENSITY -			DENSITY -			DENSITY -			DENSITY -		
STATION	OBSERVED GRAVITY	ELEV.	LATH CORR.	ELEV. CORR.	TERRA CORR.	BOUGUER GRAVITY	ELEV. CORR.	TERR. CORR.	BOUGUER GRAVITY	ELEV. CORR.	TERR. CORR.	BOUGUER GRAVITY	ELEV. CORR.	TERR. CORR.	BOUGUER GRAVITY
17W	109.91	3851	.78	227.21		337.9	224.46	-.79	33.58						
18	110.67	3838	.79	226.44		37.9	223.68	-.79	33.56						
19	111.01	3832	.80	226.09		37.9	223.32	-.78	33.55						
20W	111.59	3822	.81	225.50		37.9	222.72	-.77	33.54						
21	111.89	3817	.81	225.20		37.9	222.42	-.77	33.54						
22	112.07	3812	.82	224.91		37.8	222.12	-.76	33.43						
23	112.14	3809	.83	224.73		37.7	221.94	-.75	33.33						
24	112.70	3801	.84	224.26		37.8	221.46	-.75	33.41						
25	113.24	3789	.85	223.61		37.8	220.74	-.74	33.40						
26	113.58	3786	.85	223.37		37.8	220.56	-.73	33.41						
27	113.84	3783	.86	223.20		37.9	220.38	-.73	33.49						
28	114.31	3775	.87	222.73		37.9	219.9	-.72	33.49						
29	114.59	3770	.88	222.43		37.9	219.6	-.71	33.48						
30W	115.11	3761	.89	221.90		37.9	219.06	-.71	33.46						
31	115.70	3751	.89	221.21		37.9	218.46	-.70	33.46						
32	116.34	3740	.90	220.66		37.9	217.8	-.69	33.45						
33	117.10	3727	.91	219.89		37.9	217.02	-.69	33.43						
34	117.56	3719	.92	219.42		37.9	216.54	-.68	33.42						
35	118.49	3703	.93	218.48		37.9	215.58	-.67	33.40						
36	119.28	3688	.93	217.59		37.8	214.68	-.67	33.29						
37	120.27	3671	.94	216.59		37.8	210.42	-.66	33.22						
38	121.28	3652	.95	215.47		37.7	212.52	-.65	33.15						
39W	123.30	3616	.96	213.34		337.6	210.36	-.65	33.01						
40								-.91							

ORIGINAL FIELD WORK			DENSITY -			DENSITY -			DENSITY -			DENSITY -			
STATION	OBSERVED GRAVITY	ELEV.	LATH CORR.	ELEV. CORR.	TERRA CORR.	BOUGUER GRAVITY	ELEV. CORR.	TERR. CORR.	BOUGUER GRAVITY	ELEV. CORR.	TERR. CORR.	BOUGUER GRAVITY	ELEV. CORR.	TERR. CORR.	BOUGUER GRAVITY
15-W	111.53	3811	.92	224.85		37.3	222.06	-.64	32.95						
16	112.20	3803	.92	224.38		37.5	221.58	-.64	33.14						
17	112.59	3798	.93	224.08		37.6	221.28	-.63	33.24						
18	113.07	3793	.94	223.79		37.8	220.98	-.62	33.43						
19	113.12	3792	.95	223.73		37.8	220.92	-.62	33.42						
20-W	113.39	3789	.96	223.55		37.9	220.74	-.61	33.52						
21	113.58	3784	.96	223.26		37.8	220.44	-.60	33.42						
22	114.05	3776	.97	222.78		37.8	219.96	-.60	33.41						
23	114.86	3762	.98	221.96		37.8	219.12	-.59	33.39						
24	115.76	3745	.99	220.96		37.7	218.1	-.58	33.28						
25	116.94	3723	1.00	219.66		37.6	216.78	-.58	33.14						
26	117.57	3709	1.00	218.83		37.4	215.94	-.57	32.94						
27	118-11	3704	1.01	218.54		37.6	215.64	-.56	33.19						
28	118.13	3706	1.02	218.65		37.8	215.76	-.56	33.33						
29	118.0	3708	1.03	218.77		37.8	215.88	-.55	33.33						
30-W	118.68	3703	1.04	218.48		38.2	215.58	-.54	33.72						
31	119.94	3680	1.04	217.12		38.1	214.2	-.54	33.60						
32	121.39	3657	1.05	215.76		38.2	212.82	-.53	33.68						
33	122.50	3638	1.06	214.64		38.2	211.68	-.52	33.66						
34	123.37	3623	1.07	213.76		38.2	210.78	-.52	33.63						
35	124.41	3607	1.08	212.81		38.3	209.82	-.51	33.72						
36	124.94	3598	1.08	212.28		38.3	209.28	-.50	33.72						
37	125.26	3589	1.09	211.75		38.7	208.74	-.50	33.50						
38	126.37	3570	1.10	210.63		38.1	207.60	-.49	33.48						
39	127.01	3559	1.11	209.98		38.1	206.94	-.48	33.47						
040								-.75							



ORIGINAL FIELD WORK				DENSITY -			DENSITY -			DENSITY -			DENSITY -			DENSITY -		
GRID -	RILL			L-8N			GRAVITY DATA									PAGE -		
STATION	OBSERVED GRAVITY	ELEV.	LATH CORR.	ELEV. CORR.	TERRA CORR.	BOUGUER GRAVITY	ELEV. CORR.	TERR. CORR.	BOUGUER GRAVITY	ELEV. CORR.	TERR. CORR.	BOUGUER GRAVITY	ELEV. CORR.	TERR. CORR.	BOUGUER GRAVITY	ELEV. CORR.	TERR. CORR.	BOUGUER GRAVITY
0+0	114.33	3750	1.02	221.25		36.6	218.74	-.52	32.21									
1-E	114.18	3751	1.01	221.21		36.5	218.46	-.53	32.11									
2	114.24	3750	1.01	221.25		36.5	218.40	-.53	32.11									
3	113.60	3761	1.00	221.90		36.5	219.06	-.54	32.12									
4	113.38	3765	.99	222.14		36.5	219.3	-.55	32.13									
5	113.88	3785	.98	221.55		36.4	218.7	-.55	32.03									
6	114.30	3748	.97	221.13		36.4	218.28	-.56	32.02									
7	113.83	2756	.97	221.60		36.4	218.76	-.57	32.02									
8	113.44	3761	.96	221.90		36.3	219.06	-.57	31.93									
9	113.10	3767	.95	222.25		36.3	219.42	-.58	31.94									
10-E	112.42	3777	.94	222.84		36.2	220.02	-.59	31.85									
11	111.81	3784	.93	223.26		36.0	220.44	-.59	31.66									
12	111.81	3784	.93	223.26		36.0	220.44	-.60	31.65									
13	111.96	3780	.92	223.02		35.9	220.2	-.61	31.55									
14	112.07	3775	.91	222.73		35.8	219.9	-.61	31.46									
15	112.19	3773	.90	222.61		35.7	219.78	-.62	31.35									
16	112.10	3773	.89	222.61		35.6	219.78	-.63	31.25									
17	112.12	3771	.89	222.49		35.5	219.66	-.63	31.15									
18	112.09	3770	.88	222.43		35.4	219.6	-.64	31.05									
19	111.78	3772	.87	222.55		35.2	219.72	-.65	30.85									
20-E	111.83	3768	.86	222.31		35.0	219.48	-.65	30.66									
21	111.89	3767	.86	222.25		35.0	219.42	-.66	30.66									
22	111.76	3766	.85	222.19		34.8	219.36	-.67	30.45									
23	111.88	3764	.84	222.08		34.8	219.24	-.67	30.45									
24	112.17	3756	.83	221.60		34.6	218.76	-.68	30.25									
25	113.36	3736	.82	220.42		34.6	217.56	-.69	30.23									
26	114.63	3711	.82	218.95		34.4	216.06	-.69	30.0									
27	114.83	3701	.81	218.36		34.0	215.46	-.70	29.59									
28	114.78	2702	.80	218.42		34.0	215.52	-.71	29.59									
29	114.04	3713	.79	219.07		33.9	216.18	-.71	29.51									
30-E	113.07	3728	.78	219.95		33.8	217.08	-.72	29.45									
31	112.01	3746	.78	221.01		33.8	218.16	-.73	29.44									
32	110.99	3760	.77	221.84		33.6	219.0	-.73	29.26									
33	110.15	3771	.76	222.49		33.4	219.66	-.74	29.07									
34	109.73	3775	.75	222.73		33.2	219.9	-.75	28.88									
35	109.40	3779	.74	222.96		33.1	220.14	-.75	28.79									



ORIGINAL FIELD WORK				DENSITY -			DENSITY -			DENSITY -			DENSITY -			DENSITY -		
STATION	OBSERVED GRAVITY	ELEV.	LATH CORR.	ELEV. CORR.	TERRA CORR.	BOUGUER GRAVITY	ELEV. CORR.	TERR. CORR.	BOUGUER GRAVITY	ELEV. CORR.	TERR. CORR.	BOUGUER GRAVITY	ELEV. CORR.	TERR. CORR.	BOUGUER GRAVITY	ELEV. CORR.	TERR. CORR.	BOUGUER GRAVITY
36 E	102.40	3885	.59	229.22		32.2	226.55	-.91	27.99									
37	101.93	3893	.58	229.69		32.2	226.98	-.92	27.99									
38 E	101.41	3902	.57	230.22		32.2	227.52	-.93	28.0									
1-W	110.52	3822	.88	225.50		36.9	222.72	-.67	32.57									
2	110.55	3823	.89	225.56		37.0	222.78	-.67	32.66									
3	110.48	3824	.90	225.62		37.0	222.84	-.66	32.66									
4	110.58	3824	.90	225.62		37.1	222.84	-.65	32.77									
5	110.47	3824	.91	225.62		37.0	222.84	-.65	32.66									
6	110.84	3821	.92	225.44		37.2	222.66	-.64	32.86									
7	111.01	3818	.93	225.26		37.2	222.48	-.63	32.86									
8	111.16	3817	.94	225.20		37.3	222.42	-.63	32.95									
9	111.39	3813	.94	224.97		37.3	222.18	-.62	32.95									
10-W	111.62	3809	.95	224.73		37.3	221.94	-.61	32.95									
11	112.06	3803	.96	224.31		37.4	221.58	-.61	33.03									
12	112.29	3799	.97	224.14		37.4	221.34	-.60	33.03									
13	112.57	3794	.98	223.85		37.4	221.04	-.59	33.02									
14	112.97	3789	.98	223.55		37.5	220.74	-.59	33.12									
15	113.15	3784	.99	223.26		37.4	220.44	-.58	33.01									
16	113.60	3778	1.00	222.90		37.5	220.08	-.57	33.11									
17	114.0	3771	1.01	222.49		37.5	219.66	-.57	33.09									
18	114.41	3764	1.01	222.08		37.5	219.24	-.56	33.09									
19	114.88	3756	1.02	221.60		37.5	218.76	-.55	33.09									
20-W	115.56	3746	1.03	221.01		37.6	218.16	-.55	33.17									
21	116.14	3736	1.04	220.42		37.6	217.56	-.54	33.16									
22	116.66	3727	1.05	219.89		37.6	217.02	-.53	33.15									
23	117.19	3718	1.05	219.36		37.6	216.48	-.53	33.14									
24	117.71	3709	1.06	218.83		37.6	215.94	-.52	33.13									
25	118.35	3698	1.07	218.18		37.6	215.28	-.51	33.12									
26	119.12	3683	1.08	217.30		37.5	214.38	-.51	32.99									
27	120.02	3666	1.09	216.29		37.5	213.36	-.50	32.88									
28	121.31	3644	1.09	215.0		37.4	212.04	-.49	32.86									
29	121.74	3635	1.10	214.47		37.3	211.5	-.49	32.75									
30 W	122.32	3608	1.11	212.87		37.3	209.88	-.48	32.72									
31	124.0	3598	1.12	212.28		37.4	209.28	-.47	32.81									
32	124.22	3594	1.13	212.05		37.4	209.04	-.47	32.79									

ORIGINAL FIELD WORK				DENSITY -			DENSITY -			DENSITY -			DENSITY -		
STATION	OBSERVED GRAVITY	ELEV.	LATH CORR.	ELEV. CORR.	TERRA CORR.	BOUGUER GRAVITY	ELEV. CORR.	TERR. CORR.	BOUGUER GRAVITY	ELEV. CORR.	TERR. CORR.	BOUGUER GRAVITY	ELEV. CORR.	TERR. CORR.	BOUGUER GRAVITY
0+0	110.43	3822	.87	225.50		36.8	222.72	-.68	32.47						
1-R	110.34	3822	.86	225.50		36.7	222.72	-.69	32.37						
2	110.24	3822	.86	225.50		36.6	222.72	-.69	32.27						
3	109.98	3825	.85	225.68		36.5	222.9	-.70	32.18						
4	110.02	3821	.84	225.44		36.3	222.86	-.71	31.97						
5	111.07	3800	.83	224.20		36.1	221.4	-.71	31.76						
6	111.03	3794	.82	223.85		35.7	221.04	-.72	31.35						
7	110.23	3811	.82	224.85		35.9	222.06	-.73	31.56						
8	109.91	3820	.81	225.38		36.1	222.6	-.73	31.78						
9	109.58	3824	.80	225.62		36.0	222.84	-.74	31.68						
10-E	109.83	3820	.79	225.38		36.0	222.6	-.75	31.68						
11	109.34	3825	.79	225.68		35.8	222.9	-.75	31.49						
12	109.01	3829	.78	225.91		35.7	223.14	-.76	31.39						
13	108.47	3835	.77	226.27		35.5	223.5	-.77	31.20						
14	108.59	3833	.76	226.15		35.5	223.38	-.77	31.20						
15	108.33	3836	.75	226.32		35.4	223.6	-.78	31.11						
16	108.90	3828	.75	225.85		35.3	223.08	-.79	30.99						
17	108.84	3824	.74	225.62		35.2	222.84	-.79	30.89						
18	108.61	3823	.73	225.56		34.9	222.78	-.80	30.59	124.96		<del>3712.00</del> 3712.00		346.94	
19	108.61	3825	.72	225.68		35.0	222.9	-.81	30.70						
20-E	108.52	3825	.71	225.68		34.9	222.9	-.81	30.61						
21	108.24	3828	.71	225.85		34.8	223.08	-.82	30.50						
22	107.87	3831	.70	226.03		34.6	223.26	-.82	30.30						
23	107.66	3833	.69	226.15		34.5	223.38	-.83	30.21						
24	107.41	3834	.68	226.21		34.3	223.44	-.84	30.01						
25	106.99	3838	.67	226.44		34.1	223.68	-.85	29.82	123.34		3728.00		346.17	
26	106.67	3840	.67	226.56		33.9	223.8	-.85	29.62						
27	106.61	3839	.66	226.50		33.7	223.74	-.86	29.49						
28	106.70	3833	.65	226.15		33.5	223.38	-.87	29.21						
29	106.44	3836	.64	226.32		33.4	223.86	-.87	29.13						
30-E	106.31	3835	.63	226.27		33.2	223.5	-.88	28.93						
31	105.91	3840	.63	226.56		33.1	223.8	-.89	28.81						
32	105.31	3847	.62	226.97		32.9	224.22	-.89	28.64						
33	104.88	3857	.61	227.21		32.7	224.46	-.90	28.44	121.23		3747.00		345.15	
34	104.40	3856	.60	227.50		32.5	224.76	-.91	28.25						
35	103.26	3872	.59	228.43		32.3	225.72	-.91	28.07	119.61		3762.00		344.42	

ORIGINAL FIELD WORK				DENSITY -			DENSITY -			DENSITY -			DENSITY -		
STATION	OBSERVED GRAVITY	ELEV.	LATI-CORR.	ELEV. CORR.	TERRA-CORR.	BOUGUER GRAVITY	ELEV. CORR.	TERR. CORR.	BOUGUER GRAVITY	ELEV. CORR.	TERR. CORR.	BOUGUER GRAVITY	ELEV. CORR.	TERR. CORR.	BOUGUER GRAVITY
0+0	119.11	3663	1.17	216.12		36.4	213.18	-.37	31.92						
1-E	119.06	3664	1.16	216.18		36.4	213.24	-.38	31.92						
2	118.95	3666	1.16	216.29		36.4	213.36	-.38	31.93						
3	118.74	3668	1.15	216.41		36.3	213.48	-.39	31.83						
4	118.71	3667	1.14	216.35		36.2	213.42	-.40	31.73						
5	118.50	3669	1.13	216.47		36.1	213.54	-.40	31.64						
6	118.11	3674	1.12	216.77		36.0	213.84	-.41	31.54						
7	117.13	3689	1.12	217.65		35.9	214.74	-.42	31.45						
8	116.21	3703	1.11	218.48		35.8	215.58	-.42	31.37						
9	115.18	3719	1.10	219.62		35.7	216.54	-.43	31.29						
10-E	115.33	3715	1.09	219.38		35.6	216.3	-.44	31.19						
11	115.94	3703	1.08	218.48		35.5	215.58	-.44	31.08						
12	116.77	3689	1.08	217.65		35.5	214.74	-.45	31.05						
13	117.21	3680	1.07	217.12		35.4	214.2	-.46	30.95						
14	117.42	3675	1.06	216.83		35.3	213.9	-.46	30.86						
15	117.37	3676	1.05	216.89		35.3	213.96	-.47	30.86						
16	117.16	3678	1.04	217.0		35.2	214.08	-.48	30.76						
17	116.88	3681	1.04	217.18		35.1	214.26	-.48	30.66						
18	116.67	3683	1.03	217.30		35.0	214.38	-.49	30.56						
19	116.64	3682	1.02	217.24		34.9	214.32	-.50	30.46						
20 E	116.59	3683	1.01	217.30		34.9	214.38	-.50	30.47						
21	116.52	3681	1.00	217.18		34.7	214.26	-.51	30.27						
22	116.52	3681	1.00	217.18		34.7	214.26	-.52	30.26						
23	116.06	3689	.99	217.15		34.7	214.74	-.52	30.28						
24	115.73	3693	.98	217.89		34.6	214.98	-.53	30.18						
25	115.76	3691	.97	217.77		34.5	214.86	-.54	30.08						
26	115.19	3699	.97	218.24		34.4	215.34	-.54	29.99						
27	114.59	3706	.96	218.65		34.2	215.76	-.55	29.80						
28	113.49	3723	.95	219.66		34.1	216.78	-.56	29.71						
29	112.21	3745	.94	220.96		34.1	218.17	-.56	29.75						
30 E	110.95	3763	.93	222.02		33.9	219.18	-.57	29.56						
31	109.53	3782	.93	223.14		33.6	220.32	-.58	29.27						
32	107.83	3811	.92	224.85		33.6	222.06	-.58	29.31						
33	107.17	3824	.91	225.62		33.7	222.84	-.59	29.42						
34	107.38	3819	.90	225.32		33.6	222.54	-.60	29.32						
35	107.11	3822	.89	225.50		33.5	222.72	-.60	29.23						

GRID -		GRAVITY DATA																	PAGE -
ORIGINAL FIELD WORK				DENSITY -			DENSITY -			DENSITY -			DENSITY -			DENSITY -			
STATION	OBSERVED GRAVITY	ELEV.	LATH CORR.	ELEV. CORR.	TERRA CORR.	BOUGUER GRAVITY	ELEV. CORR.	TERR. CORR.	BOUGUER GRAVITY	ELEV. CORR.	TERR. CORR.	BOUGUER GRAVITY	ELEV. CORR.	TERR. CORR.	BOUGUER GRAVITY	ELEV. CORR.	TERR. CORR.	BOUGUER GRAVITY	
36-E	107.23	3820	.89	225.38		33.5	222.6	-.61	29.22										
37	106.96	3823	.88	225.56		33.4	222.78	-.62	29.12										
38	107.05	3820	.87	225.38		33.3	222.6	-.62	29.03										
39E	106.59	3828	.86	225.85		33.3	222.08	-.63	29.04										
1-W	119.58	3655	1.18	215.65		36.4	212.7	-.36	32.92										
2	120.0	3651	1.19	215.41		36.6	212.46	-.36	32.10										
3	120.12	3649	1.19	215.29		36.6	212.34	-.35	32.11										
4	120.01	3649	1.20	215.29		36.5	212.34	-.34	32.01										
5	120.16	3648	1.21	215.23		36.6	212.28	-.34	32.10										
6	120.72	3640	1.22	214.76		36.7	211.8	-.33	32.19										
7	120.71	3640	1.23	214.76		36.7	211.8	-.32	32.19										
8	121.05	3636	1.23	214.52		36.8	211.56	-.31	32.30										
9	120.74	3641	1.24	214.82		36.8	211.86	-.30	32.30										
10-W	120.38	3647	1.25	215.17		36.9	212.22	-.30	32.30										
11	119.74	3661	1.26	216.0		37.0	213.06	-.29	32.51										
12	118.67	3679	1.27	217.06		37.0	214.14	-.28	32.53										
13	118.47	3684	1.27	217.36		37.1	214.44	-.28	32.63										
14	118.58	3682	1.28	217.24		37.1	214.32	-.27	32.63										
15	118.81	3678	1.29	217.00		37.1	214.08	-.26	32.63										
16	119.92	3659	1.30	215.81		37.1	212.94	-.26	32.60										
17	121.25	3638	1.31	214.64		37.2	211.68	-.25	32.68										
18	121.27	3636	1.31	214.52		37.1	211.56	-.24	32.59										
19	121.73	3628	1.32	214.05		37.1	211.08	-.24	32.57										
20W	/	3621	1.33	213.64		/	210.66	-.23	.										
21	122.40	3618	1.34	213.46		37.2	210.48	-.22	32.66										
22	122.51	3616	1.35	213.34		37.2	210.36	-.22	32.65										
23	122.57	3615	1.35	213.29		37.3	210.3	-.21	32.66										
24	122.67	3613	1.36	213.17		37.2	210.18	-.21	32.64										
25	122.84	3610	1.37	212.99		37.2	210.0	-.20	32.64										
26	123.34	3603	1.38	212.51		37.3	209.58	-.20	32.72										
27	123.27	3604	1.39	212.64		37.3	209.64	-.19	32.72										
28	/	/	/	/		37.3	/	-.18	/										

GRID -		GRAVITY DATA																	PAGE -
ORIGINAL FIELD WORK				DENSITY -			DENSITY -			DENSITY -			DENSITY -			DENSITY -			
STATION	OBSERVED GRAVITY	ELEV.	LATH CORR.	ELEV. CORR.	TERR. CORR.	BOUGUER GRAVITY	ELEV. CORR.	TERR. CORR.	BOUGUER GRAVITY	ELEV. CORR.	TERR. CORR.	BOUGUER GRAVITY	ELEV. CORR.	TERR. CORR.	BOUGUER GRAVITY	ELEV. CORR.	TERR. CORR.	BOUGUER GRAVITY	
0+0	115.21	3725	1.32	219.78		36.3	216.9	-22	31.89										
1-E	115.45	3721	1.31	219.54		36.3	216.66	-23	31.88										
2	114.99	3729	1.30	220.01		36.3	217.14	-23	31.90										
3	115.13	3725	1.30	219.78		36.2	216.9	-24	31.79										
4	115.78	3714	1.29	219.13		36.2	216.24	-25	31.77										
5	115.66	3718	1.28	219.36		36.3	216.48	-25	31.89										
6	115.11	3724	1.27	219.72		36.1	216.84	-26	31.69										
7	114.31	3736	1.27	220.02		36.0	217.56	-27	31.60										
8	113.33	3751	1.26	221.31		35.9	218.46	-27	31.52										
9	112.83	3758	1.25	221.72		35.8	218.88	-28	31.43										
10-E	113.39	3747	1.24	221.07		35.7	218.22	-29	31.32										
11	113.73	3743	1.23	220.84		35.8	217.98	-29	31.42										
12	113.83	3743	1.23	220.84		35.9	217.98	-30	31.51										
13	113.88	3744	1.22	220.90		36.0	218.04	-31	31.61										
14	113.68	3746	1.21	221.01		35.9	218.10	-31	31.53										
15	113.39	3751	1.20	221.31		35.9	218.46	-32	31.53										
16	113.08	3753	1.19	221.43		35.7	218.58	-33	31.33										
17	113.01	3756	1.19	221.60		35.8	218.70	-33	31.44										
18	112.17	3767	1.18	222.25		35.6	219.42	-34	31.25										
19	112.71	3758	1.17	221.72		35.6	218.88	-35	31.24										
20-E	111.89	3772	1.16	222.25		35.6	219.72	-35	31.26										
21	112.12	3765	1.15	222.14		35.4	219.3	-36	31.06										
22	112.04	3768	1.15	222.31		35.5	219.48	-37	31.15										
23	111.75	3773	1.14	222.61		35.5	219.78	-37	31.16										
24	111.25	3780	1.13	223.02		35.4	220.2	-38	31.07										
25	110.87	3785	1.12	223.32		35.3	220.5	-39	30.98										
26	110.68	3790	1.11	223.61		35.4	220.8	-39	31.09										
27	110.40	3793	1.11	223.79		35.3	220.98	-40	30.98										
28	110.18	3797	1.10	224.02		35.3	221.22	-41	30.99										
29	110.01	3800	1.09	224.20		35.3	221.4	-41	31.0										
30-E	109.73	3805	1.08	224.50		35.3	221.7	-42	31.01										
31	109.34	3810	1.07	224.79		35.2	222.0	-43	30.91										
32	108.93	3817	1.07	225.20		35.2	222.42	-43	30.92										
33	108.74	3822	1.06	225.50		35.3	222.72	-44	31.02										
34	108.71	3821	1.05	225.44		35.2	222.66	-45	30.92										
35	109.02	3816	1.04	225.14		35.2	222.36	-45	30.93										

GRID - BILL /				L-8S GRAVITY DATA									PAGE -					
ORIGINAL FIELD WORK				DENSITY -			DENSITY -			DENSITY -			DENSITY -					
STATION	OBSERVED GRAVITY	ELEV.	LATI CORR.	ELEV. CORR.	TERRA CORR.	BOUGUER GRAVITY	ELEV. CORR.	TERR. CORR.	BOUGUER GRAVITY	ELEV. CORR.	TERR. CORR.	BOUGUER GRAVITY	ELEV. CORR.	TERR. CORR.	BOUGUER GRAVITY	ELEV. CORR.	TERR. CORR.	BOUGUER GRAVITY
36	109.02	3816	1.04	225.14		35.2	222.36	-.46	30.92									
37	109.14	3814	1.03	225.03		35.2	222.24	-.47	30.91									
38	108.98	3817	1.02	225.20		35.1	222.42	-.47	30.83									
39	108.53	3823	1.01	225.56		35.1	222.78	-.48	30.83									
40-E	107.91	3832	1.00	226.09		35.0	223.32	-.49	30.74									
41-E	/	/				35.0												
1-W	115.33	3721	1.33	219.54		36.2	216.66	-.21	31.78									
2	116.13	3709	1.34	218.83		36.3	215.94	-.21	31.86									
3	117.79	3686	1.34	217.47		36.6	214.56	-.20	32.15									
4	118.07	3681	1.35	217.18		36.6	214.26	-.19	32.14									
5	118.24	3678	1.36	217.0		36.6	214.08	-.19	32.13									
6	118.35	3676	1.37	216.88		36.6	213.96	-.18	32.13									
7	118.45	3674	1.38	216.77		36.6	213.84	-.17	32.12									
8	118.63	3671	1.38	216.59		36.6	213.66	-.17	32.12									
9	118.92	3666	1.39	216.29		36.6	213.36	-.16	32.12									
10-W	119.12	3664	1.40	216.18		36.7	213.24	-.15	32.21									
11	119.53	3657	1.41	215.76		36.7	212.82	-.15	32.20									
12	119.12	3662	1.42	216.06		36.6	213.12	-.14	32.10									
13	120.23	3645	1.42	215.06		36.7	212.1	-.13	32.20									
14	120.86	3634	1.43	214.41		36.7	211.44	-.13	32.17									
15	121.49	3625	1.44	213.81		36.8	210.9	-.12	32.27									
16	121.59	3623	1.45	213.76		36.8	210.78	-.11	32.26									
17	122.04	3617	1.46	213.60		36.9	210.42	-.11	32.35									
18	121.62	3624	1.46	213.82		36.9	210.84	-.10	32.36									
19	121.85	3620	1.47	213.58		36.9	210.6	-.09	32.36									
20-W	122.06	3618	1.48	213.46		37.0	210.48	-.09	32.45									
21	122.17	3616	1.49	213.34		37.0	210.36	-.08	32.45									
22	122.13	3615	1.49	213.29		36.9	210.30	-.07	32.36									
23	122.04	3618	1.50	213.46		37.0	210.48	-.07	32.45									
24	122.09	3617	1.51	213.40		37.0	210.42	-.06	32.45									
25	122.10	3615	1.52	213.29		36.9	210.3	-.05	32.35									
26	122.20	3613	1.53	213.17		36.9	210.18	-.05	32.35									
27-W	122.42	3611	1.53	213.05		37.0	210.06	-.04	32.44									
28-W	119.68	3659	1.54	215.88		37.1	212.94	-.03	32.59									

GRID - BILL /

L-16S

GRAVITY DATA

PAGE -

ORIGINAL FIELD WORK			DENSITY -			DENSITY -			DENSITY -			DENSITY -			
STATION	OBSERVED GRAVITY	ELEV.	LATI CORR.	ELEV. CORR.	TERRA CORR.	BOUGUER GRAVITY	ELEV. CORR.	TERR. CORR.	BOUGUER GRAVITY	ELEV. CORR.	TERR. CORR.	BOUGUER GRAVITY	ELEV. CORR.	TERR. CORR.	BOUGUER GRAVITY
1-W	119.26	3657	1.48	215.76		36.5	212.82	-.06	32.02						
2	119.94	3667	1.49	215.17		36.6	212.22	-.05	32.11						
3	120.41	3639	1.49	214.70		36.6	211.74	-.05	32.10						
4	120.71	3632	1.50	214.29		36.5	211.32	-.04	31.99						
5	120.76	3631	1.51	214.23		36.5	211.26	-.03	31.99						
6	120.91	3630	1.52	214.17		36.6	211.2	-.03	32.08						
7	121.02	3628	1.53	214.05		36.6	211.08	-.02	32.08						
8	121.12	3628	1.53	214.05		36.7	211.08	-.01	32.19						
9	121.23	3626	1.54	213.93		36.7	210.96	-.01	32.18						
10-W	121.22	3626	1.55	213.93		36.7	210.96	0	32.18						
11	121.31	3626	1.56	213.93		36.8	210.96	.01	32.26						
12	121.86	3615	1.56	212.29		36.7	210.3	.01	32.17						
13		/	1.57			/		.02							
14	122.63	3605	1.58	212.70		36.9	209.7	.03	32.30						
15	122.60	3607	1.59	212.81		37.0	209.82	.03	32.39						
16 W	122.86	3604	1.60	212.64		37.1	209.84	.04	32.28						
21-L															



ORIGINAL FIELD WORK				DENSITY -			DENSITY -			DENSITY -			DENSITY -		
STATION	OBSERVED GRAVITY	ELEV.	LATI CORR.	ELEV. CORR.	TERRA CORR.	BOUGUER GRAVITY	ELEV. CORR.	TERR. CORR.	BOUGUER GRAVITY	ELEV. CORR.	TERR. CORR.	BOUGUER GRAVITY	ELEV. CORR.	TERR. CORR.	BOUGUER GRAVITY
0+0	118.60	3670	1.47	216.53		36.6	213.66	-06	32.14						
1-E	117.90	3682	1.46	217.24		36.6	214.32	-07	32.15						
2	118.25	3678	1.45	217.0		36.7	214.08	-07	32.26						
3	117.97	3681	1.45	217.18		36.6	214.26	-08	32.15						
4	117.33	3692	1.44	217.83		36.6	214.92	-09	32.16						
5	117.18	3693	1.43	217.89		36.5	214.98	-09	32.07						
6	117.19	3693	1.42	217.89		36.5	214.98	-10	32.07						
7	116.77	3702	1.41	218.42		36.6	215.52	-11	32.18						
8	116.42	3708	1.41	218.77		36.6	215.88	-11	32.19						
9	115.60	3722	1.40	219.60		36.6	216.72	-12	32.20						
10-E	114.89	3736	1.39	220.42		36.7	217.46	-13	32.32						
11	114.03	3749	1.38	221.19		36.6	218.34	-13	32.24						
12	113.98	3750	1.37	221.25		36.6	218.40	-14	32.24						
13	113.45	3759	1.37	221.78		36.6	218.94	-15	32.24						
14	113.70	3765	1.36	221.55		36.6	218.70	-15	32.25						
15	113.56	3754	1.35	221.49		36.4	218.64	-16	32.04						
16	113.16	3761	1.34	221.90		36.4	219.06	-17	32.05						
17	112.69	3769	1.34	222.37		36.4	219.54	-17	32.06						
18	112.30	3774	1.33	222.67		36.3	219.84	-18	31.96						
19	112.06	3780	1.32	223.02		36.4	220.2	-19	32.07						
20-E	111.73	3784	1.31	223.26		36.3	220.44	-19	31.98						
21	111.57	3787	1.30	223.43		36.3	220.62	-20	31.99						
22	111.21	3793	1.30	223.79		36.3	220.98	-21	31.98						
23	110.81	3800	1.29	224.20		36.3	221.4	-21	32.0						
24	110.23	3810	1.28	224.79		36.3	222.0	-22	32.01						
25	109.89	3816	1.27	225.14		36.3	222.36	-23	32.02						
26	109.72	3819	1.26	225.37		36.3	222.54	-23	32.03						
27	109.38	3823	1.26	225.56		36.2	222.78	-24	31.92						
28	109.0	3828	1.25	225.85		36.1	223.08	-25	31.83						
29	108.89	3830	1.24	225.97		36.1	223.2	-25	31.84						
30-E	108.78	3832	1.23	226.09		36.1	223.32	-26	31.84						
31	108.63	3833	1.22	226.15		36.0	223.38	-27	31.74						
32	108.63	3833	1.22	226.15		36.0	223.38	-27	31.74						
33	108.58	3834	1.21	226.21		36.0	223.44	-28	31.74						
34	108.32	3837	1.20	226.38		35.9	223.62	-29	31.65						
35	108.13	3842	1.19	226.68		36.0	223.92	-29	31.76						

GRID - *R111/*

L-205 GRAVITY DATA

PAGE -

ORIGINAL FIELD WORK				DENSITY -			DENSITY -			DENSITY -			DENSITY -		
STATION	OBSERVED GRAVITY	ELEV.	LATH CORR.	ELEV. CORR.	TERRA CORR.	BOUGUER GRAVITY	ELEV. CORR.	TERR. CORR.	BOUGUER GRAVITY	ELEV. CORR.	TERR. CORR.	BOUGUER GRAVITY	ELEV. CORR.	TERR. CORR.	BOUGUER GRAVITY
0+0	119.16	3661	1.54	216.0		36.7	213.06	.01	32.23						
1-E	118.16	3678	1.54	217.0		36.7	214.08	0	32.24						
2	117.40	3691	1.53	217.77		36.7	214.86	0	32.26						
3	116.88	3700	1.52	218.30		36.7	215.40	-.01	32.27						
4	116.36	3709	1.51	218.83		36.7	215.94	-.02	32.28						
5	115.96	3716	1.50	219.24		36.7	216.36	-.02	32.30						
6	115.50	3722	1.50	219.60		36.6	216.72	-.03	32.19						
7	115.36	3728	1.49	219.95		36.8	217.08	-.04	32.40						
8	114.91	3734	1.48	220.31		36.7	217.44	-.04	32.31						
9	114.73	3739	1.47	220.60		36.8	217.74	-.05	32.42						
10-E	114.67	3740	1.47	220.66		36.8	217.8	-.06	32.41						
11	113.93	3751	1.46	221.31		36.7	218.46	-.06	32.33						
12	113.51	3760	1.45	221.84		36.8	219.0	-.07	32.44						
13	113.76	3756	1.44	221.60		36.8	218.76	-.08	32.44						
14	113.43	3760	1.43	221.84		36.8	219.0	-.08	32.35						
15	113.02	3767	1.43	222.25		36.7	219.42	-.09	32.35						
16	112.81	3769	1.42	222.37		36.6	219.54	-.10	32.25						
17	112.38	3773	1.41	222.61		36.4	219.78	-.10	32.06						
18	112.14	3779	1.40	222.96		36.5	220.14	-.11	32.17						
19	111.68	3787	1.39	223.43		36.5	220.62	-.12	32.18						
20-E	111.31	3795	1.39	223.91		36.6	221.10	-.12	32.29						
21	110.98	3799	1.38	224.14		36.5	221.34	-.13	32.19						
22	110.69	3804	1.37	224.44		36.5	221.64	-.14	32.19						
23	110.35	3810	1.36	224.79		36.5	222.0	-.14	32.21						
24	109.91	3816	1.35	225.14		36.4	222.36	-.15	32.12						
25	109.67	3820	1.35	225.38		36.4	222.6	-.16	32.12						
26	109.46	3822	1.34	225.50		36.3	222.72	-.16	32.02						
27	109.41	3823	1.33	225.56		36.3	222.78	-.17	32.02						
28	109.13	3828	1.32	225.85		36.3	223.08	-.18	32.03						
29	108.74	3833	1.31	226.15		36.2	223.38	-.18	31.94						
30-E	108.57	3836	1.31	226.32		36.2	223.46	-.19	31.94						

ORIGINAL FIELD WORK				DENSITY -			DENSITY -			DENSITY -			DENSITY -		
STATION	OBSERVED GRAVITY	ELEV.	LATI. CORR.	ELEV. CORR.	TERRA. CORR.	BOUGUER GRAVITY	ELEV. CORR.	TERR. CORR.	BOUGUER GRAVITY	ELEV. CORR.	TERR. CORR.	BOUGUER GRAVITY	ELEV. CORR.	TERR. CORR.	BOUGUER GRAVITY
36-E	107.18	3854	1.33	227.39		35.9	224.64	-15	31.49						
37	106.95	3858	1.33	227.62		35.9	224.88	-16	31.67						
38	106.92	3857	1.32	227.56		35.8	224.92	-16	31.58						
39	106.71	3859	1.31	227.68		35.7	224.94	-17	31.48						
40-E	106.38	3863	1.30	227.92		35.6	225.18	-18	31.38						
1-W	120.75	3636	1.63	214.52		36.9	211.56	-10	32.41						
2	121.01	3633	1.64	214.35		37.0	211.38	-10	32.49						
3	121.60	3623	1.84	213.76		37.0	210.78	-11	32.49						
4	121.83	3619	1.85	213.52		37.0	210.54	-12	32.49						
5	121.92	3619	1.66	213.52		37.1	210.54	-12	32.58						
6	122.25	3615	1.67	213.28		37.2	210.30	-13	32.67						
7	121.60	3626	1.67	213.93		37.2	210.96	-14	32.70						
8	121.00	3636	1.68	214.52		37.2	211.56	-14	32.70						
9	121.59	3624	1.69	213.82		37.1	210.84	-15	32.58						
10-W	121.04	3635	1.70	214.47		37.2	211.50	-16	32.70						
11	121.08	3634	1.71	214.41		37.2	211.44	-16	32.68						
12	121.08	3634	1.71	214.41		37.2	211.44	-17	32.69						
13	120.86	3636	1.72	214.52		37.1	211.56	-18	32.60						
14	120.75	3638	1.73	214.64		37.1	211.68	-18	32.59						
15	120.62	3638	1.74	214.64		37.0	211.68	-19	32.49						
16	120.49	3640	1.75	214.76		37.0	211.80	-20	32.49						
17	120.47	3642	1.75	214.81		37.1	211.92	-20	32.59						
18	120.09	3650	1.76	215.35		37.2	212.4	-21	32.70						
19	119.28	3667	1.77	216.35		37.4	213.42	-22	32.92						
20-W	118.78	3677	1.78	216.94		37.5	214.02	-22	33.02						
21	118.24	3686	1.79	217.47		37.5	214.56	-23	33.03						
22	118.45	3684	1.79	217.36		37.6	214.44	-24	33.13						
23	118.21	3688	1.80	217.59		37.6	214.48	-24	33.13						
24	118.30	3688	1.81	217.59		37.7	214.68	-25	33.23						
25	118.11	3691	1.82	217.77		37.7	214.86	-26	33.23						
26	118.10	3691	1.83	217.77		37.7	214.86	-26	33.22						
27	118.16	3690	1.83	217.71		37.7	214.80	-27	33.23						
28	117.62	3699	1.84	218.24		37.7	215.34	-28	33.24						
29-W	117.02	3709	1.85	218.83		37.7	215.94	-28	33.24						

ORIGINAL FIELD WORK				DENSITY -			DENSITY -			DENSITY -			DENSITY -		
STATION	OBSERVED GRAVITY	ELEV.	LATH CORR.	ELEV. CORR.	TERRA CORR.	BOUGUER GRAVITY	ELEV. CORR.	TERR. CORR.	BOUGUER GRAVITY	ELEV. CORR.	TERR. CORR.	BOUGUER GRAVITY	ELEV. CORR.	TERR. CORR.	BOUGUER GRAVITY
0+0	120.80	3637	1.62	214.58		37.0	211.62	.09	32.51						
1-E	120.47	3641	1.61	214.92		36.9	211.86	.08	32.41						
2	119.97	3648	1.60	215.23		36.8	212.28	.08	32.33						
3	119.65	3650	1.60	215.35		36.6	212.4	.07	32.12						
4	119.29	3658	1.59	215.82		36.7	212.88	.06	32.23						
5	118.89	3665	1.58	216.24		36.7	213.3	.06	32.25						
6	118.09	3677	1.57	216.94		36.6	214.02	.05	32.16						
7	117.27	3691	1.56	217.77		36.6	214.86	.04	32.17						
8	116.41	3709	1.56	218.83		36.8	215.94	.04	32.39						
9	116.07	3715	1.55	219.19		36.8	216.30	.03	32.40						
10-E	115.56	3722	1.54	219.60		36.7	216.72	.02	32.30						
11	114.98	3732	1.53	220.19		36.7	217.32	.02	32.32						
12	114.62	3740	1.52	220.66		36.8	217.80	.01	32.43						
13	113.91	3752	1.52	221.37		36.8	218.52	0	32.43						
14	113.51	3759	1.51	221.78		36.8	218.94	0	32.45						
15	113.11	3766	1.50	222.19		36.8	219.36	.01	32.46						
16	112.70	3773	1.49	222.61		36.8	219.78	.02	32.46						
17	112.30	3780	1.48	223.02		36.8	220.2	.02	32.48						
18	111.85	3786	1.48	223.37		36.7	220.56	.03	32.38						
19	111.78	3789	1.47	223.55		36.8	220.74	.04	32.48						
20-E	111.18	3796	1.46	223.96		36.6	221.16	.04	32.30						
21	110.89	3801	1.45	224.26		36.6	221.46	.05	32.30						
22	110.43	3809	1.44	224.73		36.6	221.94	.06	32.31						
23	109.98	3815	1.44	225.09		36.5	222.3	.06	32.21						
24	109.69	3820	1.43	225.38		36.5	222.6	.07	32.21						
25	109.35	3826	1.42	225.73		36.5	222.96	.08	32.23						
26	108.90	3832	1.41	226.09		36.4	223.32	.08	32.14						
27	108.63	3835	1.41	226.27		36.3	223.50	.09	32.04						
28	108.24	3840	1.40	226.56		36.2	223.8	.10	31.94						
29	108.13	3842	1.39	226.68		36.2	223.92	.10	31.95						
30 E	108.02	3844	1.38	226.80		36.2	224.04	.11	31.95						
31	107.88	3845	1.37	226.86		36.1	224.1	.12	31.86						
32	107.87	3845	1.37	226.86		36.1	224.1	.12	31.85						
33	107.08	3840	1.36	226.56		36.0	223.8	.13	31.75						
34	107.68	3847	1.35	226.97		36.0	224.22	.14	31.76						
35	107.41	3850	1.34	227.15		35.9	224.4	.14	31.67						

GRID - BILL 1

L-288

GRAVITY DATA

PAGE -

ORIGINAL FIELD WORK			DENSITY -			DENSITY -			DENSITY -			DENSITY -			
STATION	OBSERVED GRAVITY	ELEV.	LATI CORR.	ELEV. CORR.	TERR CORR.	BOUGUER GRAVITY	ELEV. CORR.	TERR CORR.	BOUGUER GRAVITY	ELEV. CORR.	TERR CORR.	BOUGUER GRAVITY	ELEV. CORR.	TERR CORR.	BOUGUER GRAVITY
1-W	121.54	3623	1.70	213.76		37.0	210.78	18	32.50						
2	121.65	3621	1.71	213.64		37.0	210.66	18	32.49						
3	121.51	3625	1.72	213.88		37.1	210.9	19	32.60						
4	121.71	3623	1.73	213.76		37.2	210.78	20	32.69						
5	121.71	3623	1.73	213.76		37.2	210.78	20	32.69						
6	121.05	3634	1.74	214.41		37.2	211.44	21	32.70						
7	120.99	3635	1.75	214.47		37.2	211.5	22	32.70						
8	120.99	3633	1.76	214.35		37.1	211.38	22	32.59						
9	120.92	3634	1.77	214.41		37.1	211.44	23	32.59						
10-W	121.02	3634	1.77	214.41		37.2	211.44	24	32.70						
11	120.91	3634	1.78	214.41		37.1	211.44	24	32.59						
12	120.83	3637	1.79	214.58		37.1	211.62	25	32.70						
13	120.23	3647	1.80	215.17		37.2	212.22	26	32.71						
14	120.27	3648	1.80	215.23		37.3	212.28	26	32.81						
15-W	119.36	3665	1.81	216.24		37.4	213.3	27	32.93						

GRID -		GRAVITY DATA																		PAGE -
ORIGINAL FIELD WORK				DENSITY -			DENSITY -			DENSITY -			DENSITY -			DENSITY -				
STATION	OBSERVED GRAVITY	ELEV.	LATH CORR.	ELEV. CORR.	TERRA CORR.	BOUGUER GRAVITY	ELEV. CORR.	TERR. CORR.	BOUGUER GRAVITY	ELEV. CORR.	TERR. CORR.	BOUGUER GRAVITY	ELEV. CORR.	TERR. CORR.	BOUGUER GRAVITY	ELEV. CORR.	TERR. CORR.	BOUGUER GRAVITY		
0+0	121.48	3626	1.69	213.93		37.1	210.96	.17	32.60											
1-E	121.30	3629	1.69	214.11		37.1	211.14	.16	32.60											
2	120.72	3639	1.68	214.70		37.1	211.74	.16	32.62											
3	120.26	3647	1.67	215.17		37.1	212.22	.15	32.63											
4	119.91	3653	1.66	215.53		37.1	212.58	.14	32.63											
5	119.81	3655	1.65	215.65		37.1	212.7	.14	32.65											
6	119.76	3654	1.65	215.59		37.0	212.64	.13	32.53											
7	119.72	3655	1.64	215.65		37.0	212.7	.12	32.54											
8	117.86	3685	1.63	217.42		36.9	214.5	.12	32.48											
9	116.84	3704	1.62	218.54		37.0	215.64	.11	32.58											
10-E	116.26	3714	1.61	219.13		37.0	216.24	.10	32.60											
11	115.91	3720	1.61	219.48		37.0	216.60	.10	32.61											
12	115.45	3728	1.60	219.95		37.0	217.08	.09	32.71											
13	114.41	3744	1.59	220.90		36.9	218.04	.08	32.53											
14	114.23	3749	1.58	221.19		37.0	218.34	.08	32.65											
15	113.76	3757	1.58	221.66		37.0	218.82	.07	32.65											
16	113.35	3764	1.57	222.08		37.0	219.24	.06	32.65											
17	112.91	3770	1.56	222.43		36.9	219.60	.06	32.57											
18	112.58	3774	1.55	222.67		36.8	219.84	.05	32.47											
19	112.22	3782	1.54	223.14		36.9	220.32	.04	32.58											
20-E	111.28	3798	1.54	224.08		36.9	221.28	.04	32.60											
21	110.68	3810	1.53	224.79		36.8	222.0	.03	32.51											
22	109.72	3823	1.52	225.56		36.8	222.78	.02	32.53											
23	108.98	3834	1.51	226.21		36.7	223.44	.02	32.44											
24	108.42	3842	1.50	226.68		36.6	223.92	.01	32.35											
25	108.02	3849	1.49	227.09		36.6	224.34	0	32.36											
26	107.91	3851	1.48	227.21		36.6	224.46	0	32.37											
27	107.82	3851	1.47	227.21		36.6	224.46	-.01	32.27											
28	106.95	3866	1.46	228.09		36.5	225.36	-.02	32.29											
29	107.12	3863	1.46	227.92		36.5	225.18	-.02	32.28											
30-E	108.04	3846	1.45	226.91		36.4	224.16	-.03	32.17											

GRID -		BILL /		L-325		GRAVITY DATA															PAGE -
ORIGINAL FIELD WORK				DENSITY -			DENSITY -			DENSITY -			DENSITY -			DENSITY -					
STATION	OBSERVED GRAVITY	ELEV.	LATH CORR.	ELEV. CORR.	TERRA CORR.	BOUGUER GRAVITY	ELEV. CORR.	TERR. CORR.	BOUGUER GRAVITY	ELEV. CORR.	TERR. CORR.	BOUGUER GRAVITY	ELEV. CORR.	TERR. CORR.	BOUGUER GRAVITY	ELEV. CORR.	TERR. CORR.	BOUGUER GRAVITY			
36-E	104.28	3904	1.48	230.34		36.1	227.64	0	21.92												
37	104.23	3905	1.48	230.40		36.1	227.7	-0.01	21.92												
38	104.65	3898	1.47	229.98		36.1	227.28	-0.01	21.83												
39	104.44	3900	1.46	230.10		36.0	227.4	-0.02	21.83												
40-E	104.17	3903	1.45	230.28		35.9	227.58	-0.03	21.72												
1-W	121.80	3624	1.78	213.82		37.4	210.84	.25	22.89												
2	120.80	3641	1.78	214.82		37.4	211.86	.25	22.91												
3	120.99	3641	1.79	214.82		37.6	211.86	-.26	23.11												
4	121.08	3636	1.80	214.52		37.4	211.56	-.27	22.91												
5	120.89	3644	1.81	215.0		37.7	212.04	.27	23.20												
6	120.19	3654	1.82	215.59		37.6	212.64	.28	23.11												
7	120.24	3655	1.82	215.65		37.7	212.7	.29	23.30												
8	120.22	3655	1.83	215.65		37.7	212.7	.29	23.21												
9	120.06	3656	1.84	215.70		37.6	212.76	.30	23.12												
10 W	119.71	3660	1.85	215.94		37.5	213.0	.31	23.02												
11	119.78	3657	1.86	215.76		37.4	212.82	.31	22.91												
12	119.25	3666	1.86	216.29		37.4	213.36	.32	22.93												
13	118.82	3673	1.87	216.71		37.4	213.78	.33	22.93												
14	118.46	3679	1.88	217.06		37.4	214.14	.33	22.93												
15	118.37	3682	1.89	217.24		37.5	214.32	.34	23.03												
16	117.77	3692	1.90	217.83		37.5	214.92	.35	23.04												
17	117.30	3700	1.90	218.30		37.5	215.4	.35	23.05												
18	117.21	3703	1.91	218.48		37.6	215.58	.36	23.15												
19	116.91	3708	1.92	218.77		37.6	215.88	.37	23.16												
20 W	116.60	3713	1.93	219.07		37.6	216.18	.37	23.15												
21	116.10	3723	1.94	219.66		37.7	216.78	.38	23.26												
22	116.09	3725	1.94	219.78		37.8	216.9	.39	23.38												
23	116.00	3728	1.95	219.95		37.9	217.08	.39	23.47												
24	115.46	3737	1.96	220.49		37.9	217.62	.40	23.48												
25	115.09	3743	1.97	220.84		37.9	217.98	.41	23.48												
26	114.39	3755	1.97	221.55		37.9	218.7	.41	23.50												
27	113.71	3768	1.98	222.31		38.0	219.48	.42	23.61												
28	112.87	3782	1.99	223.14		38.0	220.32	.43	23.62												
29	112.14	3796	2.0	223.96		38.1	221.16	.43	23.73												
30 W	111.30	3810	2.01	224.79		38.1	222.0	.44	23.74												

GRID - BILL /		L-325 GRAVITY DATA																		PAGE -
ORIGINAL FIELD WORK				DENSITY -			DENSITY -			DENSITY -			DENSITY -			DENSITY -				
STATION	OBSERVED GRAVITY	ELEV.	LATH CORR.	ELEV. CORR.	TERRA CORR.	BOUGUER GRAVITY	ELEV. CORR.	TERR. CORR.	BOUGUER GRAVITY	ELEV. CORR.	TERR. CORR.	BOUGUER GRAVITY	ELEV. CORR.	TERR. CORR.	BOUGUER GRAVITY	ELEV. CORR.	TERR. CORR.	BOUGUER GRAVITY		
0+0	121.38	3628	1.77	24.05		37.2	211.08	.24	32.7											
1-E	121.42	3624	1.76	213.82		37.0	210.84	.23	32.49											
2	121.43	3624	1.75	218.82		37.0	210.84	.23	32.48											
3	121.40	3623	1.74	213.76		36.9	210.78	.22	32.40											
4	121.27	3627	1.74	213.99		37.0	211.02	.21	32.50											
5	120.29	3642	1.73	214.88		36.9	211.92	.21	32.40											
6	119.83	3650	1.72	215.35		36.9	212.40	.20	32.43											
7	119.43	3657	1.71	215.76		36.9	212.82	.19	32.44											
8	119.17	3663	1.71	216.12		37.0	213.18	.19	32.54											
9	119.44	3657	1.70	215.76		36.9	212.82	.18	32.44											
10-E	119.82	3649	1.69	215.29		36.8	212.34	.17	32.38											
11	118.96	3662	1.68	216.06		36.7	213.12	.17	32.25											
12	117.89	3682	1.67	217.24		36.8	214.32	.16	32.37											
13	116.67	3701	1.67	218.36		36.7	215.46	.15	32.28											
14	115.62	3719	1.66	219.62		36.7	216.54	.15	32.31											
15	114.51	3738	1.65	220.54		36.7	217.68	.14	32.33											
16	113.34	3758	1.64	221.72		36.7	218.88	.13	32.25											
17	112.56	3773	1.63	222.61		36.8	219.78	.13	32.47											
18	111.97	3783	1.63	223.20		36.8	220.38	.12	32.47											
19	111.16	3797	1.62	224.02		36.8	221.22	.11	32.49											
20 E	111.33	3796	1.61	223.96		36.9	221.16	.11	32.60											
21	110.69	3807	1.60	224.61		36.9	221.82	.10	32.61											
22	109.89	3819	1.59	225.32		36.8	222.54	.09	32.52											
23	108.96	3833	1.59	226.15		36.7	223.38	.09	32.43											
24	108.15	3847	1.58	226.97		36.7	224.22	.08	32.45											
25	107.27	3862	1.57	227.86		36.7	225.12	.07	32.46											
26	107.46	3859	1.56	227.68		36.7	224.94	.07	32.47											
27	106.66	3871	1.55	228.39		36.6	225.66	.06	32.38											
28	106.66	3871	1.55	228.39		36.6	225.66	.05	32.38											
29	106.45	3873	1.54	228.51		36.5	225.78	.05	32.28											
30 E	106.35	3875	1.53	228.63		36.5	225.90	.04	32.29											
31	105.67	3885	1.52	229.22		36.4	226.50	.03	32.20											
32	105.78	3883	1.52	229.10		36.4	226.38	.03	32.19											
33	105.44	3889	1.51	229.45		36.4	226.74	.02	32.20											
34	105.05	3894	1.50	229.75		36.3	227.04	.01	32.10											
35	104.55	3901	1.49	230.16		36.2	227.46	.01	32.02											

GRID -		GRAVITY DATA																		PAGE -
ORIGINAL FIELD WORK				DENSITY -			DENSITY -			DENSITY -			DENSITY -			DENSITY -				
STATION	OBSERVED GRAVITY	ELEV.	LATH CORR.	ELEV. CORR.	TERRA CORR.	BOUGUER GRAVITY	ELEV. CORR.	TERR. CORR.	BOUGUER GRAVITY	ELEV. CORR.	TERR. CORR.	BOUGUER GRAVITY	ELEV. CORR.	TERR. CORR.	BOUGUER GRAVITY	ELEV. CORR.	TERR. CORR.	BOUGUER GRAVITY		
0+0	120.83	3648	1.84	215.23		37.9	212.28	.24	33.45											
1 E	120.78	3642	1.84	214.88		37.5	211.92	.33	33.03											
2	120.46	3646	1.83	215.11		37.4	212.16	.33	32.95											
3	120.48	3644	1.82	215.00		37.3	212.04	.22	32.84											
4	120.24	3645	1.81	215.06		37.1	212.1	.31	32.65											
5	120.91	3632	1.80	214.29		37.0	211.32	.21	32.54											
6	121.22	3627	1.80	213.99		37.0	211.02	.30	32.56											
7	121.00	3629	1.79	214.11		36.9	211.14	.29	32.43											
8	120.26	3640	1.78	214.76		36.8	211.8	.29	32.35											
9	119.52	3651	1.77	215.41		36.7	212.46	.28	32.26											
10 E	119.12	3658	1.76	215.82		36.7	212.88	.27	32.27											
11	119.35	3654	1.76	215.59		36.7	212.64	.27	32.26											
12	119.66	3649	1.75	215.29		36.7	212.34	.26	32.26											
13	118.98	3659	1.74	215.88		36.6	212.94	.25	32.17											
14	117.63	3682	1.73	217.24		36.6	214.32	.25	32.18											
15 E	116.27	3707	1.72	218.71		36.7	215.82	.24	32.33											
1 W	120.29	3657	1.85	215.76		37.9	212.82	.25	33.46											
2	119.12	3675	1.86	216.83		37.8	213.9	.25	33.37											
3	118.79	3682	1.87	217.24		37.9	214.32	.26	33.47											
4	118.92	3678	1.88	217.00		37.8	214.08	.27	33.37											
5	119.21	3673	1.88	216.71		37.8	213.78	.27	33.36											
6	118.91	3678	1.89	217.0		37.8	214.08	.28	33.37											
7	118.23	3691	1.90	217.77		37.9	214.86	.29	33.48											
8	118.30	3688	1.91	217.59		37.8	214.68	.29	33.37											
9	118.08	3690	1.91	217.71		37.7	214.8	.40	33.28											
10-K	117.92	3696	1.92	218.06		37.7	215.16	.41	33.29											
11	117.61	3696	1.93	218.06		37.6	215.16	.41	33.18											
12	117.44	3697	1.94	218.12		37.5	215.22	.42	33.08											
13	117.47	3703	1.95	218.48		37.4	215.58	.43	33.48											

ORIGINAL FIELD WORK				DENSITY -			DENSITY -			DENSITY -			DENSITY -		
STATION	OBSERVED GRAVITY	ELEV.	LATH CORR.	ELEV. CORR.	TERRA CORR.	BOUGUER GRAVITY	ELEV. CORR.	TERR. CORR.	BOUGUER GRAVITY	ELEV. CORR.	TERR. CORR.	BOUGUER GRAVITY	ELEV. CORR.	TERR. CORR.	BOUGUER GRAVITY
0+0			1.92			37.5			.40						
1-E	118.84	3672	1.91	216.65		37.4	213.72	.39	32.95						
2	119.83	3652	1.90	215.47		37.2	212.52	.38	32.73						
3	120.06	3650	1.89	215.35		37.3	212.4	.38	32.84						
4	120.16	3645	1.89	215.06		37.1	212.1	.37	32.63						
5	120.36	3640	1.88	214.76		37.0	211.8	.36	32.52						
6	121.11	3624	1.87	213.82		36.8	210.84	.36	32.31						
8	120.57	3625	1.86	213.89		36.3	210.9	.34	31.81						
9	120.26	3627	1.85	213.99		36.1	211.02	.34	31.62						
10-E	119.86	3632	1.85	214.29		36.0	211.32	.33	31.51						
11-E	120.19	3630	1.84	214.17		36.2	211.2	.32	31.71						
12	120.48	3627	1.83	213.99		36.3	211.02	.32	31.82						
13	119.25	3648	1.82	215.23	36.3	36.4	212.28	.31	31.94	119.25					
14	119.05	3653	1.82	215.53	36.4	36.4	212.58	.30	31.93						
15	118.30	3666	1.81	216.29	36.4	36.4	213.36	.30	31.96						
16	116.99	3690	1.80	217.71	36.4	36.5	214.8	.29	32.08	116.89					
17	115.35	3718	1.79	219.36	36.5	36.5	216.48	.28	32.11						
18	114.14	3742	1.78	220.78	36.5	36.7	217.92	.28	32.34	113.94					
19	113.87	3745	1.78	220.96	36.7	36.6	218.1	.27	32.24	113.96					
20-E	113.88	3745	1.77	220.96	36.6	36.6	218.10	.26	32.24						
21	112.59	3767	1.76	222.25	36.6	36.6	219.42	.26	32.27						
22	111.49	3784	1.75	223.26	36.6	36.5	220.44	.25	32.18	111.59					
23	110.72	3799	1.74	224.14	36.5	36.6	221.24	.24	32.30	110.62					
24	110.01	3811	1.74	224.85	36.5	36.6	222.06	.24	32.31						
25	109.37	3822	1.73	225.50	36.5	36.6	222.72	.23	32.32						
26	108.75	3831	1.72	226.03	36.5	36.5	223.26	.22	32.23	108.85					
27	107.70	3849	1.71	227.09	36.5	36.5	224.34	.22	32.26						
28	107.18	3858	1.70	227.62	36.5	36.5	224.88	.21	32.27						
29	106.47	3870	1.70	228.33	36.5	36.5	225.10	.20	32.27						
30-E	106.32	3871	1.69	228.39	36.5	36.4	225.66	.20	32.18	106.42					
31	105.76	3879	1.68	228.86	36.4	36.3	226.14	.19	32.09	105.86					
32	105.47	3884	1.67	229.16	36.3	36.3	226.44	.18	32.09						
33	104.85	3893	1.66	229.19	36.3	36.2	226.98	.18	32.01	104.95					
34	104.60	3899	1.66	230.04	36.2	36.3	227.34	.17	32.11	104.50					
35	103.76	3910	1.65	230.69	36.3	36.1	228.0	.16	31.96	103.95					
36	102.69	3930	1.64	231.87	36.1	36.2	229.2	.16	32.05	102.59					

GRID - *BILL /*

*L-40S*

GRAVITY DATA

PAGE-

ORIGINAL FIELD WORK			DENSITY -				DENSITY -			DENSITY -			DENSITY -		
STATION	OBSERVED GRAVITY	ELEV.	LATI. CORR.	ELEV. CORR.	TERRA. CORR.	BOUGUER GRAVITY	ELEV. CORR.	TERR. CORR.	BOUGUER GRAVITY	ELEV. CORR.	TERR. CORR.	BOUGUER GRAVITY	ELEV. CORR.	TERR. CORR.	BOUGUER GRAVITY
37	102.64	3931	1.63	231.93	36.~	36.2	229.26	.15	32.05						
38	102.20	3937	1.62	232.28	36.~	36.1	229.62	.14	31.96	102.30					
39 E	101.92	3940	1.62	232.46	36.1	36.0	229.8	.14	31.86	102.02			118.77		348.71
40 E	101.75	3943	1.61	232.64	36.0					101.75					
(1 W)	101.46	3968	1.93	234.11		37.5	231.48	.40	33.34	101.75					
2	116.90	3708	1.93	218.77		37.6	215.88	.41	33.19	101.60					
3	117.11	3706	1.94	218.65		37.7	215.76	.42	33.29						
4	116.80	3711	1.95	218.95		37.7	216.06	.42	33.28						
5	116.61	3714	1.96	219.13		37.7	216.24	.43	33.28						
6	116.66	3713	1.97	219.07		37.7	216.18	.44	33.28						
7	116.66	3713	1.97	219.07		37.7	216.18	.44	33.28						
8	116.46	3718	1.98	219.36		37.8	216.48	.45	33.39						
9	115.92	3727	1.99	219.89		37.8	217.02	.46	33.40						
10 W	115.02	3742	2.0	220.78		37.8	217.92	.46	33.40						
11	114.68	3751	2.01	221.31		38.0	218.46	.47	33.61						
12	113.93	3762	2.01	221.96		37.9	219.12	.48	33.53						
13	113.45	3770	2.02	222.43		37.9	219.6	.48	33.62						
14	113.20	3774	2.03	222.67		37.9	219.84	.49	33.53						
15	112.76	3783	2.04	223.20		38.0	220.38	.50	33.64						
16	112.59	3786	2.04	223.37		38.0	220.56	.50	33.65						
17	112.44	3790	2.05	223.61		38.1	220.8	.51	33.75						
18	111.96	3798	2.06	224.08		38.1	221.28	.52	33.76						
19	111.44	3805	2.07	224.50		38.0	221.70	.52	33.66						
20 W	111.27	3806	2.08	224.55		33.79	221.76	.53	33.56						
21	110.69	3814	2.08	225.03		37.8	222.24	.54	33.47						
22	109.98	3826	2.09	225.73		37.8	222.96	.54	33.48						
23	109.89	3829	2.10	225.91		37.9	223.14	.55	33.58						
24	109.70	3832	2.11	226.09		37.9	223.32	.56	33.58						
25	109.69	3832	2.12	226.09		37.9	223.32	.56	33.57						
26	110.11	3825	2.12	225.68		37.9	222.90	.57	33.58						
27	109.56	3824	2.13	226.21		37.9	223.44	.58	33.58						
28	108.47	3854	2.14	227.39		38.0	224.64	.58	33.69						
29	107.17	3876	2.15	228.68		38.0	225.96	.59	33.72						
30 W	105.80	3899	2.16	230.04		38.0	227.34	.60	33.74						

GRID - BILL /

L-485

GRAVITY DATA

PAGE -

ORIGINAL FIELD WORK				DENSITY -			DENSITY -			DENSITY -			DENSITY -		
STATION	OBSERVED GRAVITY	ELEV.	LATH CORR.	ELEV. CORR.	TERRA CORR.	BOUGUER GRAVITY	ELEV. CORR.	TERR. CORR.	BOUGUER GRAVITY	ELEV. CORR.	TERR. CORR.	BOUGUER GRAVITY	ELEV. CORR.	TERR. CORR.	BOUGUER GRAVITY
010	111.27	3801	2.07	224.26		37.6	227.46	.55	32.21						
1-E	112.03	3785	2.06	223.32		37.4	220.50	.54	32.07						
2	112.96	3766	2.05	222.19		37.2	219.36	.54	32.86						
3	114.08	3742	2.04	220.79		36.9	217.92	.53	32.53						
4	117.05	3690	2.04	217.71		36.8	214.8	.52	32.37						
5	118.36	3668	2.03	216.41		36.8	213.48	.52	32.36						
6	119.19	3654	2.02	215.59		36.8	212.64	.51	32.34						
7	120.33	3635	2.01	214.47		36.8	211.5	.50	32.33						
8	120.53	3630	2.0	214.17		36.7	211.2	.50	32.23						
9	120.21	3632	2.0	214.29		36.5	211.32	.49	32.02						
10-E	/	3625	1.99			-		.48							
11	120.33	3627	1.98	213.99		36.3	211.02	.48	31.83						
12	119.74	3622	1.97	214.29		36.0	211.32	.47	31.53						
13	120.05	3627	1.96	213.99		36.0	211.02	.46	31.53						
14	120.05	3627	1.96	213.99		36.0	211.02	.46	31.53						
15	119.90	3628	1.95	214.05		35.9	211.08	.45	31.43						
16	119.87	3632	1.94	214.29		36.1	211.32	.44	31.63						
17	118.21	3662	1.93	216.06		36.2	213.12	.44	31.77						
18	116.55	3692	1.92	217.83		36.3	214.92	.43	31.90						
19	115.37	3712	1.92	219.01		36.3	216.12	.42	31.91						
20-E	113.56	3741	1.91	219.13		36.3	216.24	.42	31.92						
21	112.18	3763	1.90	222.02		36.1	219.18	.41	31.77						
22	110.96	3789	1.89	223.55		36.4	220.74	.40	32.10						
23	110.43	3798	1.89	224.08		36.4	221.28	.40	32.11						
24	110.30	3802	1.88	224.32		36.5	221.52	.39	32.21						
25	109.96	3808	1.87	224.67		36.5	221.88	.38	32.22						
26	109.14	3822	1.86	225.50		36.5	222.72	.38	32.24						
27	109.17	3820	1.85	225.38		36.4	222.60	.37	32.14						
28	107.70	3845	1.85	226.86		36.4	224.1	.36	32.16						
29	106.47	3866	1.84	228.09		36.4	225.36	.36	32.19						
30-E	105.55	3880	1.83	228.92		36.3	226.2	.35	32.10						
31	104.56	3897	1.82	229.92		36.3	227.22	.34	32.12						
32	104.48	3907	1.81	230.51		36.3	227.82	.34	32.64						
33	103.11	3920	1.81	231.28		36.2	228.60	.33	32.04						
34	101.90	3939	1.80	232.40		36.1	229.74	.32	31.96						
35	101.50	3946	1.79	232.81		36.1	230.16	.32	31.98						

GRID - BILL /

L-56 S

## GRAVITY DATA

PAGE -

ORIGINAL FIELD WORK				DENSITY -			DENSITY -			DENSITY -			DENSITY -		
STATION	OBSERVED GRAVITY	ELEV.	LATH CORR.	ELEV. CORR.	TERRA CORR.	BOUGUER GRAVITY	ELEV. CORR.	TERR. CORR.	BOUGUER GRAVITY	ELEV. CORR.	TERR. CORR.	BOUGUER GRAVITY	ELEV. CORR.	TERR. CORR.	BOUGUER GRAVITY
010	110.60	3805	2.21	224.50		37.3	221.71	0.70	32.01						
1-E	112.29	3773	2.20	222.61		37.1	219.78	.70	32.77						
2	113.91	3744	2.19	220.90		37.0	218.04	.69	32.64						
3	115.05	3723	2.19	219.66		36.9	216.78	.68	32.51						
4	116.38	3699	2.18	218.24		36.8	215.34	.68	32.40						
5	117.43	3678	2.17	217.00		36.6	214.08	.67	32.18						
6	118.22	3663	2.16	216.12		36.5	213.18	.66	32.06						
7	119.57	3642	2.15	214.88		36.6	211.92	.66	32.15						
8	119.93	3636	2.15	214.52		36.6	211.56	.68	32.14						
9	120.0	3625	2.14	214.47		36.6	211.50	.64	32.14						
10-E	120.11	3635	2.13	214.47		36.7	211.5	.64	32.25						
11	119.68	3644	2.12	215.0		36.8	212.04	.63	32.35						
12	119.40	3649	2.11	215.29		36.8	212.34	.62	32.36						
13	119.16	3653	2.11	215.53		36.8	212.58	.62	32.36						
14	118.29	3668	2.10	216.41		36.8	213.48	.61	32.38						
15	118.18	3670	2.09	216.53		36.8	213.60	.60	32.38						
16	117.90	3675	2.08	216.83		36.8	213.90	.60	32.40						
17	117.79	3677	2.07	216.94		36.8	214.02	.59	32.40						
18	117.55	3681	2.07	217.18		36.8	214.26	.58	32.39						
19	116.77	3691	2.06	217.77		36.6	214.86	.58	32.21						
20-E	116.15	3700	2.05	218.30		36.5	215.40	.57	32.72						
21	116.89	3686	2.04	217.47		36.4	214.56	.56	32.01						
22	116.78	3688	2.03	217.59		36.4	214.68	.56	32.02						
23	115.60	3708	2.03	218.77		36.4	215.88	.55	32.03						
24	114.27	3729	2.02	220.01		36.4	217.14	.54	32.05						
25	113.93	3735	2.01	220.37		36.3	217.50	.54	31.97						
26	113.46	3743	2.00	220.84		36.3	217.98	.53	31.97						
27	112.82	3754	1.99	221.49		36.3	218.64	.52	31.98						
28	111.35	3779	1.99	222.96		36.3	220.14	.52	32.01						
29	110.47	3794	1.98	223.85		36.3	221.04	.51	32.02						
30-E	109.48	3811	1.97	224.85		36.3	222.06	.50	32.03						

ORIGINAL FIELD WORK				DENSITY - 0.059			DENSITY - 0.00			DENSITY -			DENSITY -			DENSITY -		
STATION	OBSERVED GRAVITY	ELEV.	LATH CORR.	ELEV. CORR.	TERRA CORR.	BOUGUER GRAVITY	ELEV. CORR.	TERR. CORR.	BOUGUER GRAVITY	ELEV. CORR.	TERR. CORR.	BOUGUER GRAVITY	ELEV. CORR.	TERR. CORR.	BOUGUER GRAVITY	ELEV. CORR.	TERR. CORR.	BOUGUER GRAVITY
0+0	110.67	3801	2.37	224.26		37.3	221.46	.86	32.99									
1 E	112.53	3768	2.36	222.31		37.2	219.48	.85	32.86									
2	113.09	3757	2.35	221.66		37.1	218.82	.84	32.75									
3	113.51	3750	2.34	221.25		37.1	218.40	.84	32.75									
4	113.62	3750	2.33	221.25		37.2	218.40	.83	32.85									
5	113.68	3749	2.33	221.19		37.3	218.34	.82	32.84									
6	114.87	3729	2.32	220.01		37.2	217.14	.82	32.83									
7	115.90	3710	2.31	218.89		37.1	216.0	.81	32.71									
8	116.54	3696	2.30	218.06		36.9	215.16	.80	32.50									
9 E	117.20	3685	2.29	217.42		36.9	214.5	.80	32.50									
10 E	117.90	3673	2.29	216.71		36.9	213.78	.79	32.47									
11	117.64	3676	2.28	216.88		36.8	213.96	.78	32.38									
12	117.82	3673	2.27	216.71		36.8	213.78	.78	32.38									
13	118.97	3652	2.26	215.47		36.7	212.52	.77	32.26									
14	119.07	3652	2.26	215.47		36.8	212.52	.76	32.25									
15	118.88	3652	2.25	215.47		36.6	212.52	.76	32.16									
16	118.44	3658	2.24	215.82		36.5	212.88	.75	32.07									
17	117.99	3664	2.23	216.18		36.4	213.24	.74	31.97									
18	117.41	3674	2.22	216.77		36.4	213.84	.74	31.99									
19	116.98	3683	2.22	217.30		36.5	214.38	.73	32.09									
20 E	117.01	3681	2.21	217.18		36.4	214.26	.72	31.99									
21	116.90	3683	2.20	217.30		36.4	214.38	.72	32.0									
22	116.52	3688	2.19	217.59		36.3	214.68	.71	31.91									
23	115.07	3711	2.18	218.95		36.2	216.06	.70	31.83									
24	115.27	3706	2.18	218.65		36.1	215.76	.70	31.73									
25	114.80	3714	2.17	219.13		36.1	216.24	.69	31.73									
26	114.24	3722	2.16	219.60		36.0	216.72	.68	31.64									
27	112.97	3742	2.15	220.78		35.9	217.92	.68	31.57									
28	112.04	3758	2.14	221.72		35.9	218.88	.67	31.59									
29 E	110.62	3782	2.14	223.14		35.9	220.32	.66	31.60									

GRID -		L-72 S GRAVITY DATA																		PAGE -		
ORIGINAL FIELD WORK			DENSITY -			DENSITY -			DENSITY -			DENSITY -			DENSITY -							
STATION	OBSERVED GRAVITY	ELEV.	LATH CORR.	ELEV. CORR.	TERRA CORR.	BOUGUER GRAVITY	ELEV. CORR.	TERR. CORR.	BOUGUER GRAVITY	ELEV. CORR.	TERR. CORR.	BOUGUER GRAVITY	ELEV. CORR.	TERR. CORR.	BOUGUER GRAVITY	ELEV. CORR.	TERR. CORR.	BOUGUER GRAVITY	ELEV. CORR.	TERR. CORR.	BOUGUER GRAVITY	
18-E	117.40	3670	2.37	216.53		36.3	213.6	.89	21.89													
19	116.43	3683	2.37	217.30		36.1	214.38	.88	31.69													
20	115.69	3694	2.36	217.95		36.0	215.04	.88	31.61													
21	114.86	3705	2.35	218.60		35.8	215.70	.87	31.43													
22	113.94	3719	2.34	219.42		35.7	216.54	.86	31.34													
23	114.85	3702	2.33	218.42		35.6	215.52	.86	31.23													
24	115.57	3683	2.33	217.30		35.2	214.38	.85	30.80													
25	116.60	3664	2.32	216.18		35.1	213.24	.84	30.68													
26	117.01	3659	2.31	215.88		35.2	212.94	.84	30.79													
27	116.96	3660	2.30	215.94		35.2	213.0	.83	30.79													
28	117.17	3660	2.29	215.94		35.4	213.0	.82	30.99													
29	120.08	3669	2.29	212.93	216.47	35.3	209.94	.82	30.84	116.54												
30	119.72	3671	2.28	213.40	216.59	35.4	210.42	.81	30.95	116.53												
31 E	116.74	3666	2.27	216.29		35.3	213.36	.80	30.90													
0+0								1.01														

+16.85  
-110

ORIGINAL FIELD WORK				DENSITY - (2.059)			DENSITY - (2.110)			DENSITY - (2.06)			DENSITY -			DENSITY -		
STATION	OBSERVED GRAVITY	ELEV.	LATH CORR.	ELEV. CORR.	TERRA CORR.	BOUGUER GRAVITY	ELEV. CORR.	TERR. CORR.	BOUGUER GRAVITY	ELEV. CORR.	TERR. CORR.	BOUGUER GRAVITY	ELEV. CORR.	TERR. CORR.	BOUGUER GRAVITY	ELEV. CORR.	TERR. CORR.	BOUGUER GRAVITY
22-E	116.0	3668	2.49	216.41		34.9	213.48	1.01	30.49									
23	116.34	3664	2.48	216.18		35.0	213.24	1.01	30.59									
24	116.53	3661	2.47	216.0		35.0	213.06	1.0	30.59									
25	116.59	3660	2.47	215.94		35.0	213.0	0.99	30.58									
26	116.50	3660	2.46	215.94		34.9	213.0	.99	30.49									
27	116.41	3660	2.45	215.94		34.8	213.0	.98	30.39									
28	115.83	3665	2.44	216.24		34.5	213.3	.97	30.10									
29	115.45	3668	2.44	216.41		34.3	213.48	.97	29.90									
30-E	115.40	3669	2.43	216.47		34.3	213.54	.96	29.90									
0+0																		

GRID - BILL

TL-28N GRAVITY DATA

PAGE -

ORIGINAL FIELD WORK			DENSITY -			DENSITY -			DENSITY -			DENSITY -			
STATION	OBSERVED GRAVITY	ELEV.	LATH CORR.	ELEV. CORR.	TERRA CORR.	BOUGUER GRAVITY	ELEV. CORR.	TERR. CORR.	BOUGUER GRAVITY	ELEV. CORR.	TERR. CORR.	BOUGUER GRAVITY	ELEV. CORR.	TERR. CORR.	BOUGUER GRAVITY
L-28N	114.45	3770	1.02	222.43		37.9	219.60	-72	33.33						
27	115.08	3758	1.00	221.72		37.8	218.88	-70	33.26						
26	116.53	3732	.98	220.19		37.7	217.32	-68	33.17						
28	117.02	3724	.96	219.72		37.7	216.84	-66	33.20						
24-N	116.59	3725	.95	220.37		37.9	217.5	-64	33.45						
23	116.72	3733	.93	220.25		37.9	217.38	-62	33.48						
22	117.16	3726	.91	219.93		37.9	216.96	-60	33.52						
21	117.55	3718	.89	219.36		37.8	216.48	-59	33.44						
20-N	118.16	3708	.87	218.77		37.8	215.88	-57	33.47						

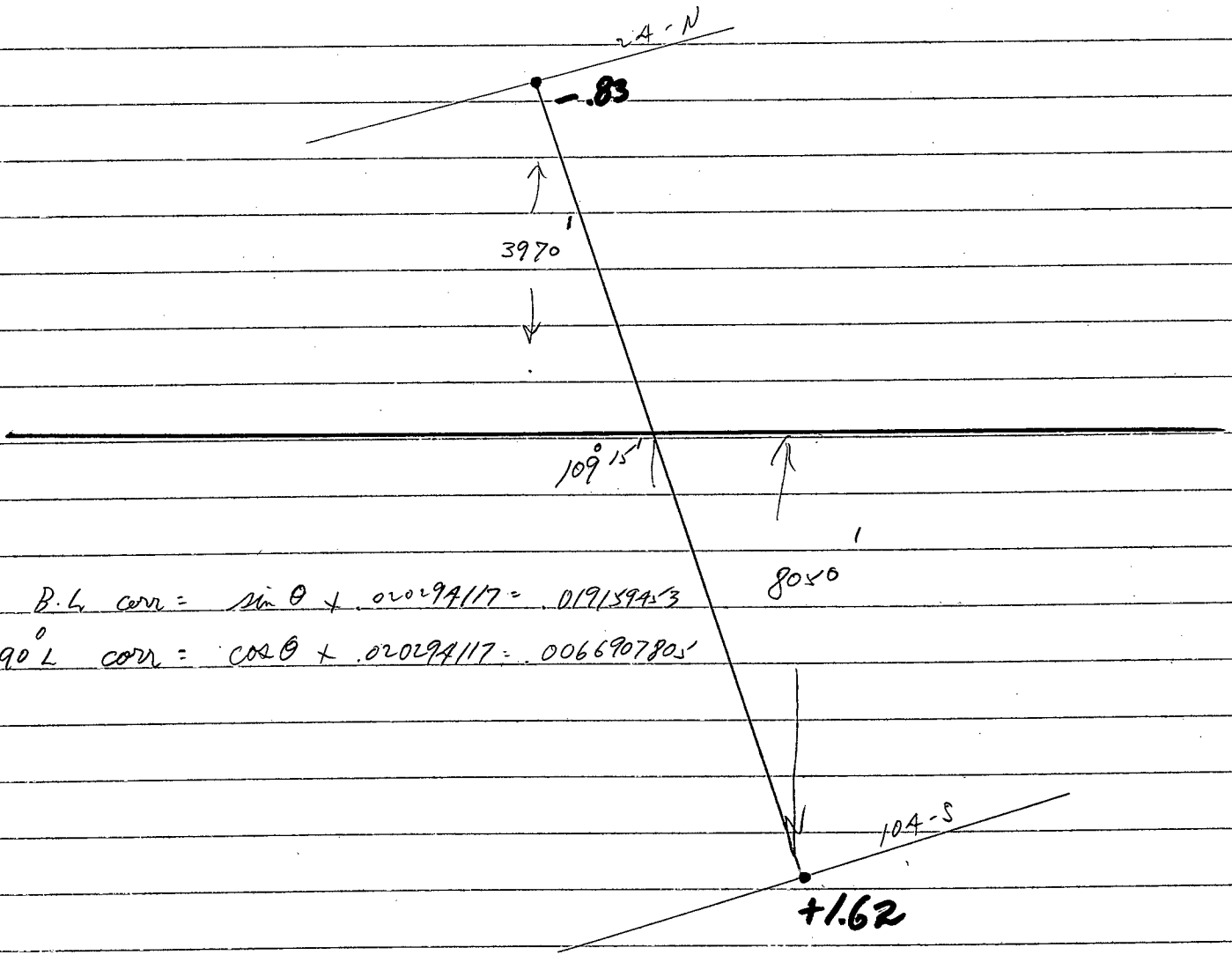
GRID -		GRAVITY DATA																	PAGE -
ORIGINAL FIELD WORK				DENSITY -			DENSITY -			DENSITY -			DENSITY -			DENSITY -			
STATION	OBSERVED GRAVITY	ELEV.	LATH CORR.	ELEV. CORR.	TERRA CORR.	BOUGUER GRAVITY	ELEV. CORR.	TERR. CORR.	BOUGUER GRAVITY	ELEV. CORR.	TERR. CORR.	BOUGUER GRAVITY	ELEV. CORR.	TERR. CORR.	BOUGUER GRAVITY	ELEV. CORR.	TERR. CORR.	BOUGUER GRAVITY	
L-24N	106.37	3890	-72	229.51		36.6	226.8	-83	32.34										
23	106.82	3882	-74	229.04		36.6	226.32	-81	32.33										
22	107.45	3871	-76	228.39		36.6	225.66	-79	32.32										
21	108.06	3862	-78	227.86		36.7	225.12	-77	32.41										
20	108.41	3854	-80	227.39		36.6	224.64	-75	32.30										
19	109.20	3842	-82	226.68		36.7	223.92	-73	32.39										
18	109.61	3835	-83	226.27		36.7	223.5	-72	32.39										
17	109.88	3830	-85	225.97		36.7	223.2	-70	32.38										
16-N	110.43	3822	-87	225.50		36.8	222.72	-68	32.47										
15	110.77	3816	-89	225.14		36.8	222.36	-66	32.47										
14	111.04	3811	-91	224.85		36.8	222.06	-64	32.46										
13	111.26	3807	-93	224.61		36.8	221.82	-62	32.46										
12	111.53	3802	-95	224.32		36.8	221.52	-60	32.45										
11	112.06	3791	-97	223.67		36.7	220.86	-58	32.34										
10	112.82	3778	-98	222.90		36.7	220.08	-56	32.34										
9	113.68	3763	1.00	222.02		36.7	219.18	-54	32.32										
8-N	114.33	3750	1.02	221.25		36.6	218.4	-52	32.21						3743				
7	114.90	3740	1.04	220.66		36.6	217.80	-50	32.20										
6	115.94	3722	1.06	219.60		36.6	216.72	-49	32.17										
5	117.26	3696	1.08	218.06		36.5	215.16	-47	32.05										
4	118.18	3680	1.10	217.12		36.4	214.20	-45	31.93										
3	118.67	3673	1.12	216.71		36.5	213.78	-43	32.02										
2	119.41	3657	1.13	215.76		36.3	212.82	-41	31.82										
1	119.72	3653	1.15	215.53		36.3	212.58	-39	31.91										
0 N	119.11	3663	1.17	216.12		36.4	213.18	-37	31.92						3655				
1-S	118.74	3674	1.19	216.77		36.7	213.84	-35	32.23										
2	117.68	3690	1.21	217.71		36.6	214.8	-33	32.15										
3	116.48	3710	1.23	218.89		36.6	216.0	-31	32.17										
4	115.71	3721	1.25	219.54		36.5	216.66	-29	32.08										
5	115.54	3722	1.26	219.60		36.4	216.72	-27	31.99										
6	116.47	3711	1.28	218.95		36.7	216.06	-26	32.27										
7	115.23	3725	1.30	219.78		36.3	216.90	-24	31.89										
8-S	115.21	3725	1.32	219.78		36.3	216.9	-22	31.89						3722				
9	115.02	3726	1.34	219.82		36.2	216.96	-20	31.79										
10	115.66	3715	1.36	219.19		36.2	216.30	-18	31.78										

GRID -		GRAVITY DATA																	PAGE -
ORIGINAL FIELD WORK				DENSITY -			DENSITY -			DENSITY -			DENSITY -			DENSITY -			
STATION	OBSERVED GRAVITY	ELEV.	LATH CORR.	ELEV. CORR.	TERRA CORR.	BOUGUER GRAVITY	ELEV. CORR.	TERR. CORR.	BOUGUER GRAVITY	ELEV. CORR.	TERR. CORR.	BOUGUER GRAVITY	ELEV. CORR.	TERR. CORR.	BOUGUER GRAVITY	ELEV. CORR.	TERR. CORR.	BOUGUER GRAVITY	
L-11-S	116.80	3697	1.38	218.12		36.3	215.22	-.16	31.86										
12	117.47	3687	1.40	217.53		36.4	214.62	-.14	31.95										
13	118.21	3676	1.41	216.88		36.5	213.96	-.12	32.05										
14	119.54	3653	1.43	215.53		36.5	212.58	-.10	32.02										
15	119.46	3654	1.45	215.59		36.5	212.64	-.08	32.02										
16-S	118.0	3670	1.47	216.53		36.0	213.6	-.06	31.54										
17	118.23	3676	1.49	216.88		36.6	213.96	-.04	32.15										
18	118.68	3668	1.51	216.41		36.6	213.48	-.03	32.13										
19	119.17	3661	1.53	216.0		36.7	213.06	-.01	32.22										
20-S	119.16	3661	1.54	216.0		36.7	213.06	+.01	32.23										
21	119.44	3656	1.56	215.70		36.7	212.76	+.03	32.23										
22	119.87	3650	1.58	215.25		36.8	212.4	+.05	32.32										
23	120.32	3642	1.60	214.88		36.8	211.92	+.07	32.31										
24-S	120.70	3637	1.62	214.58		37.0	211.62	+.09	32.41										
25	120.68	3637	1.64	214.58		36.9	211.62	+.11	32.41										
26	120.66	3637	1.66	214.58		36.9	211.62	+.13	32.41										
27	121.09	3631	1.68	214.23		37.0	211.26	+.15	32.50										
28-S	121.48	3626	1.69	213.93		37.1	210.96	+.17	32.61										
29	121.67	3624	1.71	213.82		37.2	210.84	+.19	32.70										
30	121.95	3619	1.73	213.52		37.2	210.54	+.20	32.69										
31	121.42	3626	1.75	213.93		37.1	210.96	+.22	32.60										
32-S	121.38	3628	1.77	214.05		37.2	211.08	+.24	32.70										
33	121.75	3623	1.79	213.76		37.3	210.78	+.26	32.79										
34	121.66	3626	1.81	213.93		37.4	210.96	+.28	32.90										
35	121.04	3638	1.82	214.64		37.5	211.68	+.30	33.02										
36-S	120.83	3648	1.84	215.23		37.9	212.28	+.32	33.43										
37	120.00	3655	1.86	215.65		37.5	212.7	+.34	33.04										
38	119.39	3665	1.88	216.24		37.5	213.3	+.36	33.05										
39	118.44	3679	1.90	217.06		37.4	214.14	+.38	32.96										
40-S	/	-	1.92	217.77		37.5		+.40											
41	117.47	3693	1.94	217.89		37.3	214.98	+.42	32.87										
42	116.05	3710	1.96	218.89		36.9	216.0	+.43	32.68										
43	114.19	3743	1.97	220.84		37.0	217.98	+.45	32.62										
44	111.72	3788	1.99	223.49		37.2	220.68	+.47	32.87										
45	110.90	3805	2.01	224.50		37.4	221.7	+.49	33.09										
46	110.60	3813	2.03	224.97		37.6	222.18	+.51	33.29										



Elev. = 110' ft.

# FARO BILL



$$B.L. \text{ corr} = \sin \theta \times .020294117 = .019159453$$
$$90^\circ L \text{ corr} = \cos \theta \times .020294117 = .0066907805$$