

CYPRUS ANVIL MINING CORPORATION

MACMILLAN PROJECT

105-N-9 DETAIL AREA

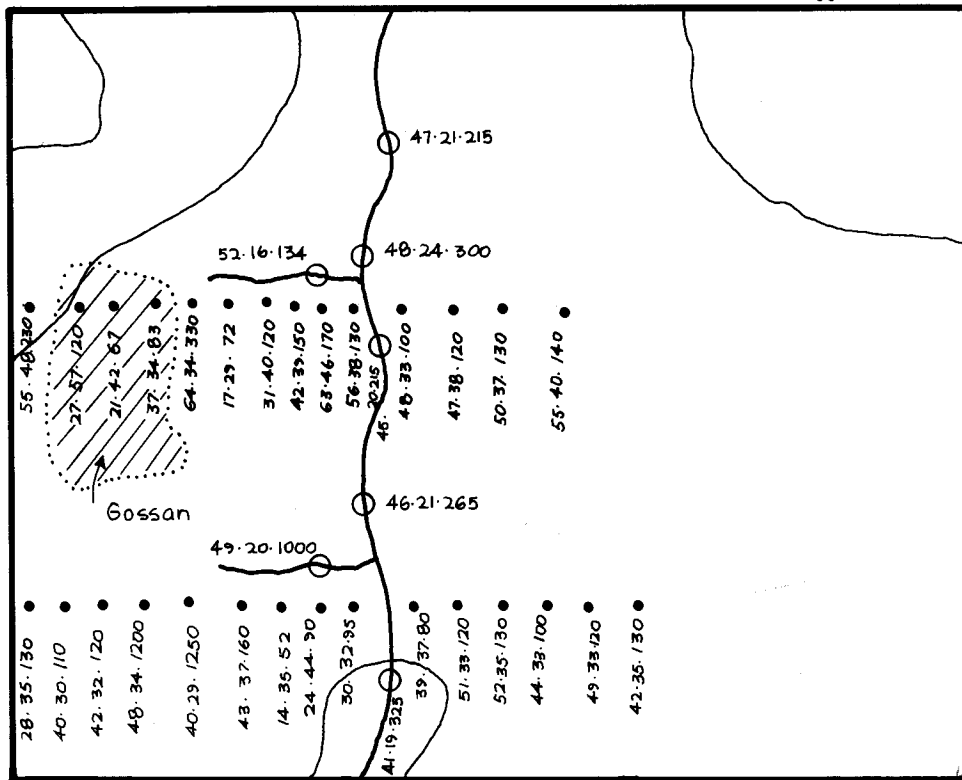
GEOCHEMICAL VALUES

ANALYSIS IN PPM:

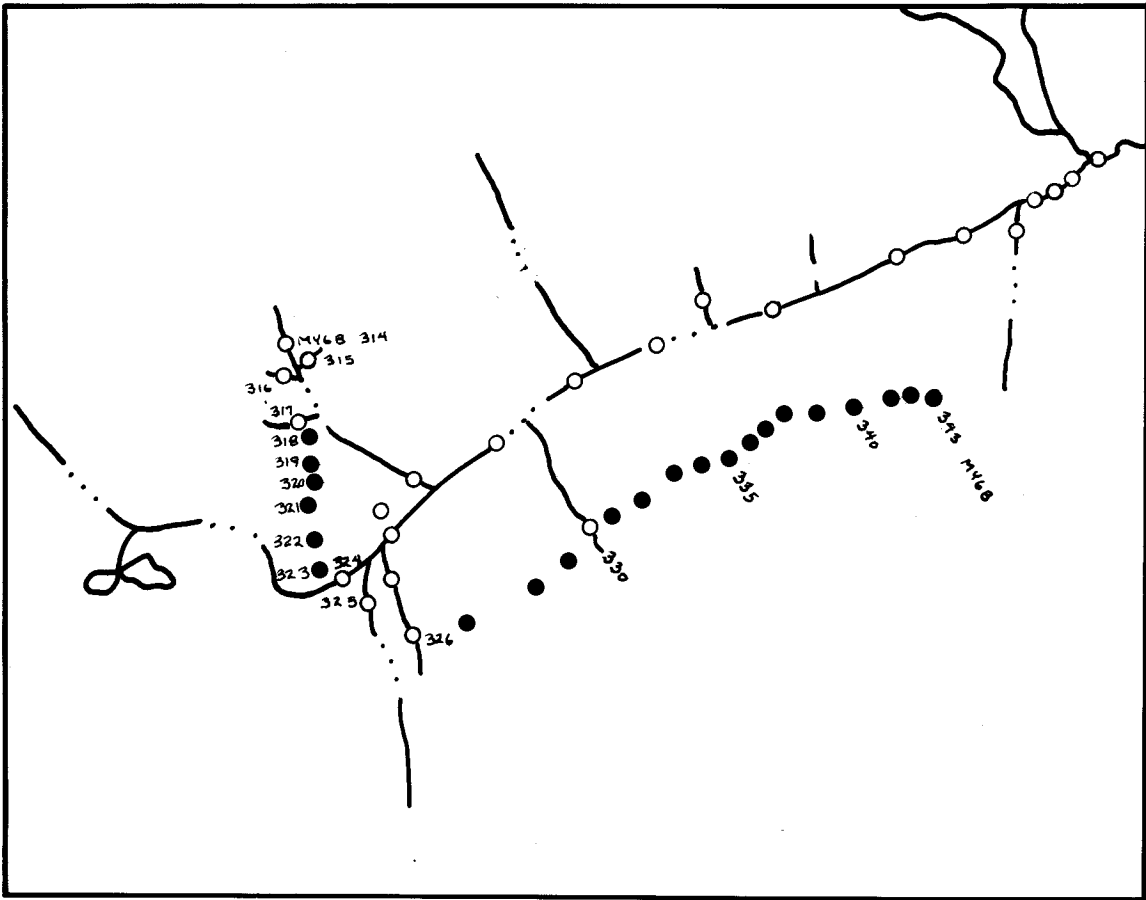
45·23·89·600

Cu · Pb · Zn · Ba

SCALE: 1/4 mi. : 1 inch

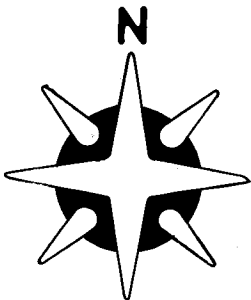


105-N-9



**LEGEND**

- SOIL SAMPLE SITE
- SILT SAMPLE SITE
- M - MACMILLAN PROJECT
- Y - OEX
- 6 - 1976
- Q - SAMPLER
- (6.0) - pH



**DETAIL AREA 105 G 16  
MACMILLAN PROJECT**

SCALE: 1" = 1/2 MILE

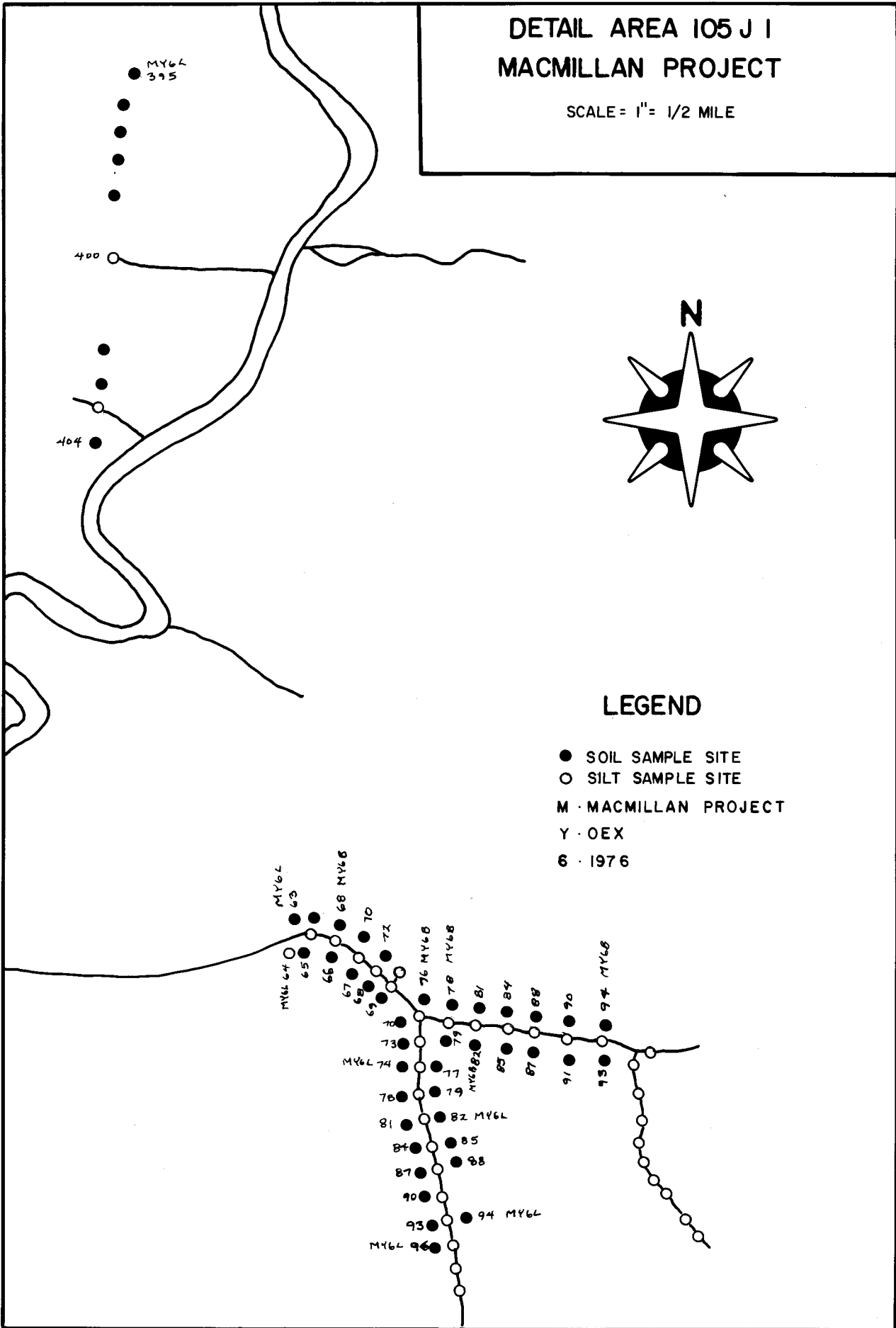
# DETAIL AREA 105 J I MACMILLAN PROJECT

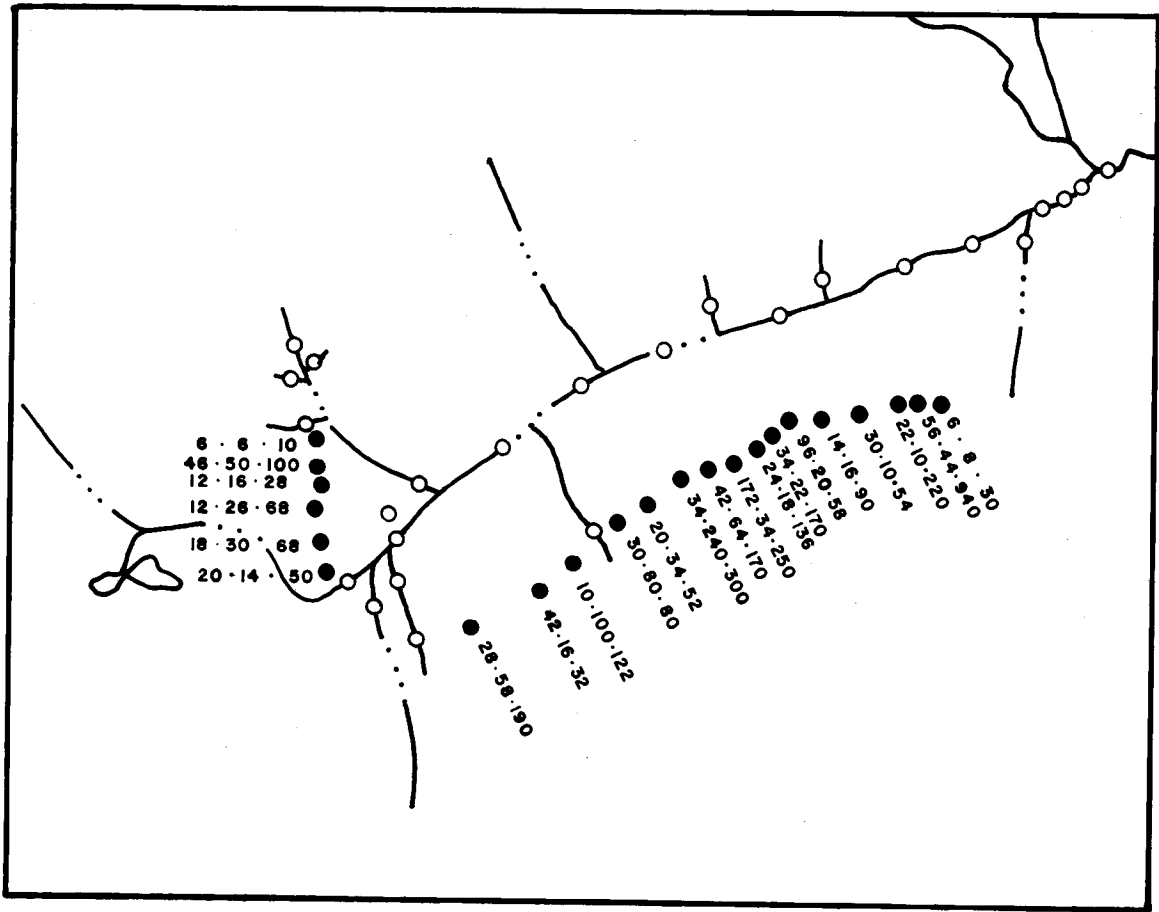
SCALE = 1" = 1/2 MILE



## LEGEND

- SOIL SAMPLE SITE
- SILT SAMPLE SITE
- M · MACMILLAN PROJECT
- Y · OEX
- 6 · 1976





### LEGEND

- SOIL SAMPLE SITE
- SILT SAMPLE SITE

ANALYSIS IN PPM  
Cu, Pb, Zn, Ba

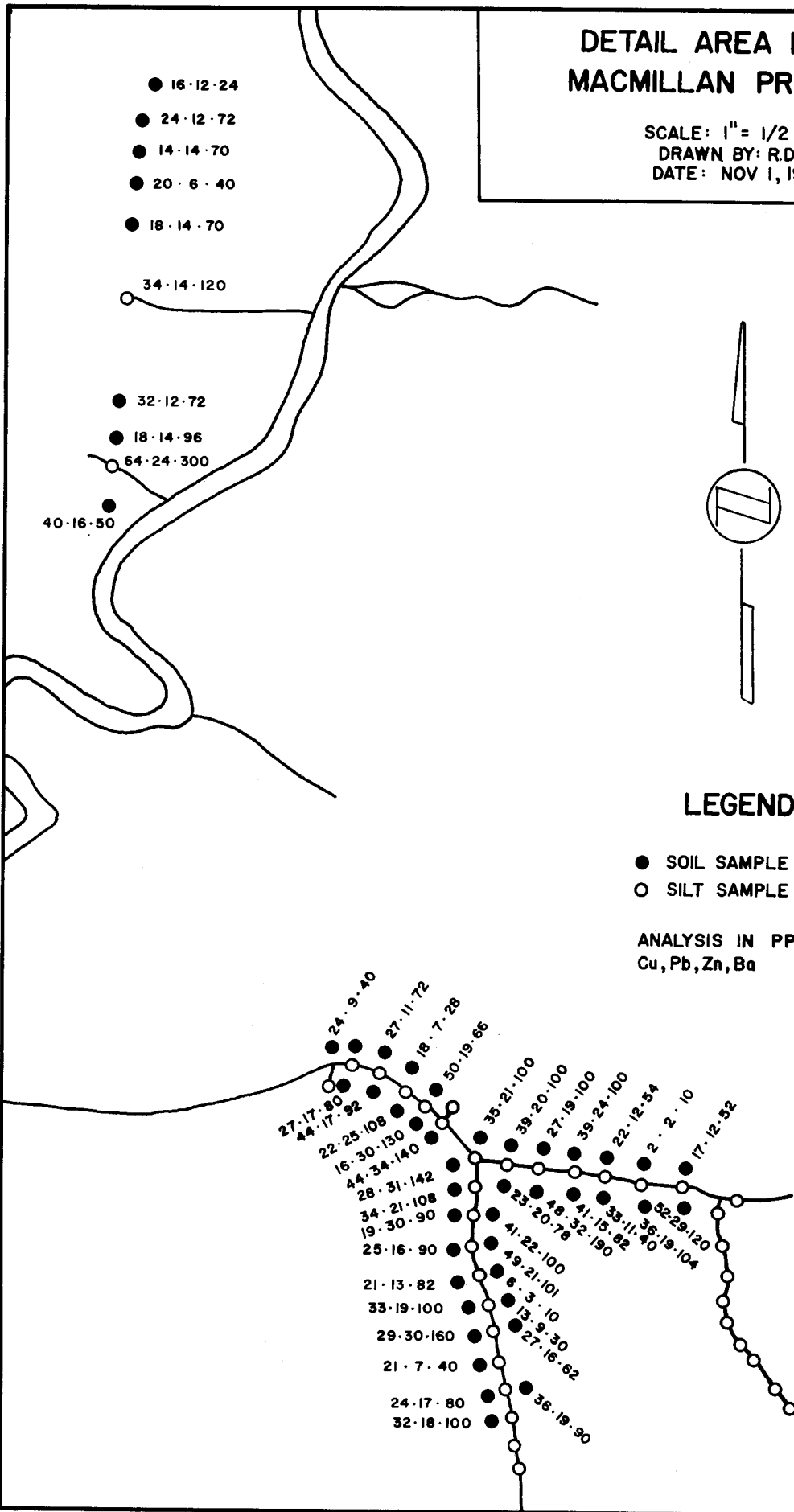


DETAIL AREA 105 G 16  
MACMILLAN PROJECT

SCALE: 1" = 1/2 MILE  
DRAWN BY: R.D.H.  
DATE: OCT. 28, 1976

# DETAIL AREA 105 J I MACMILLAN PROJECT

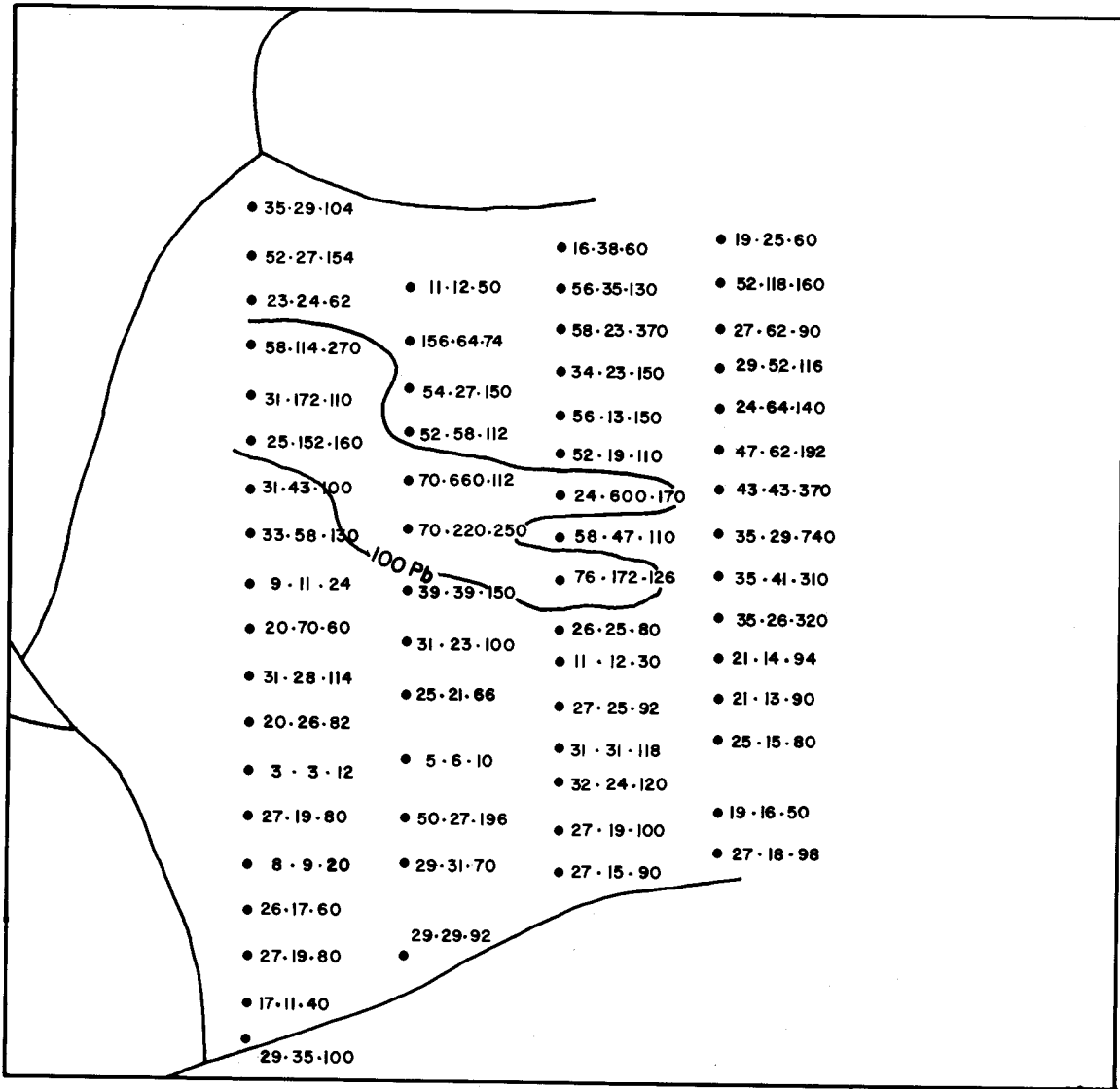
SCALE: 1" = 1/2 MILE  
DRAWN BY: R.D.H.  
DATE: NOV 1, 1976



## LEGEND

- SOIL SAMPLE SITE
- SILT SAMPLE SITE

ANALYSIS IN PPM  
Cu, Pb, Zn, Ba

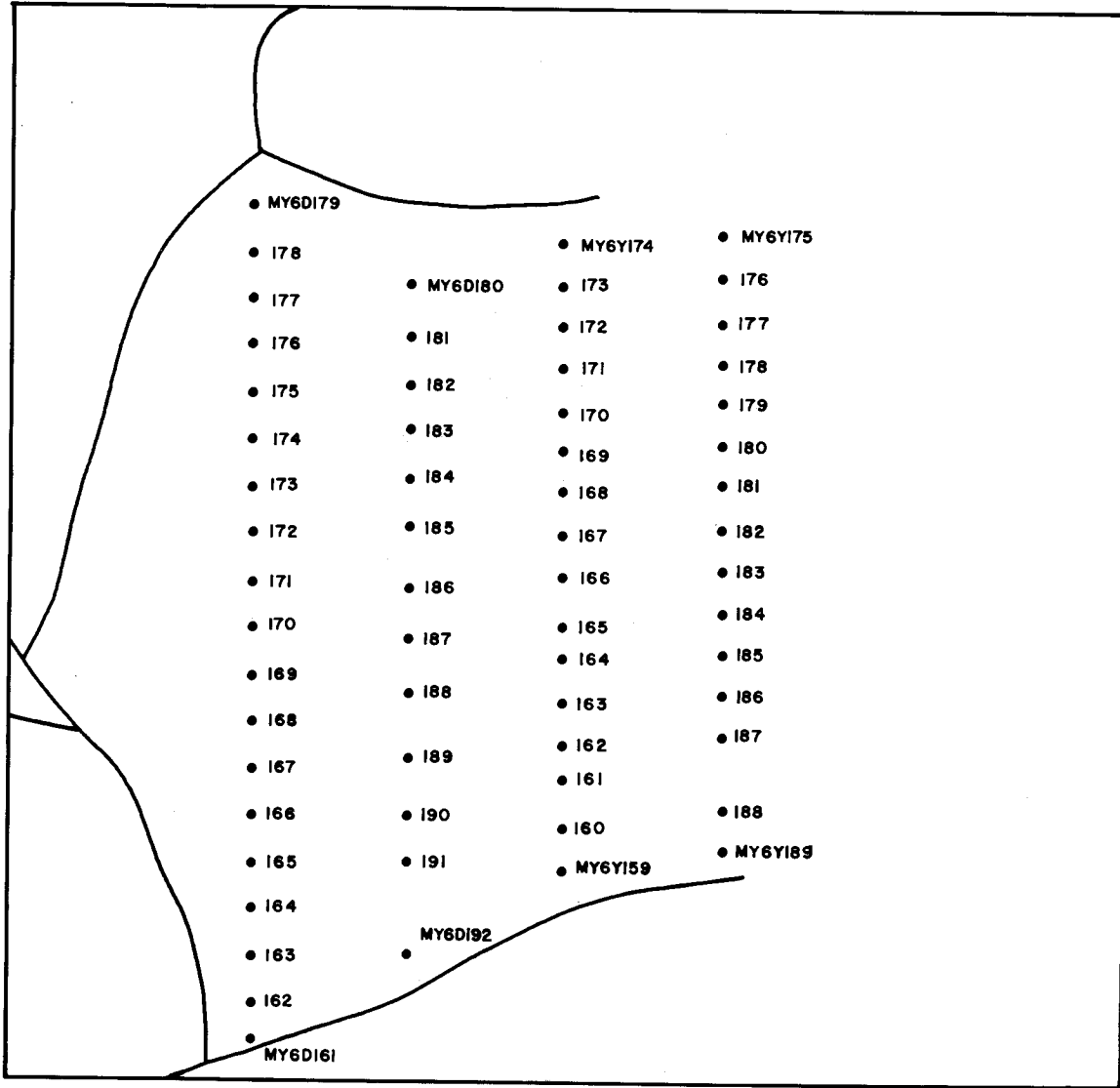


### LEGEND

- SOIL SAMPLE SITE
- ANALYSIS IN PPM  
Cu, Pb, Zn, Ba

### DETAIL AREA 105 J 2 MACMILLAN PROJECT

SCALE: 1" = 1000'  
DRAWN BY: RDH  
DATE: NOV 3, 1976



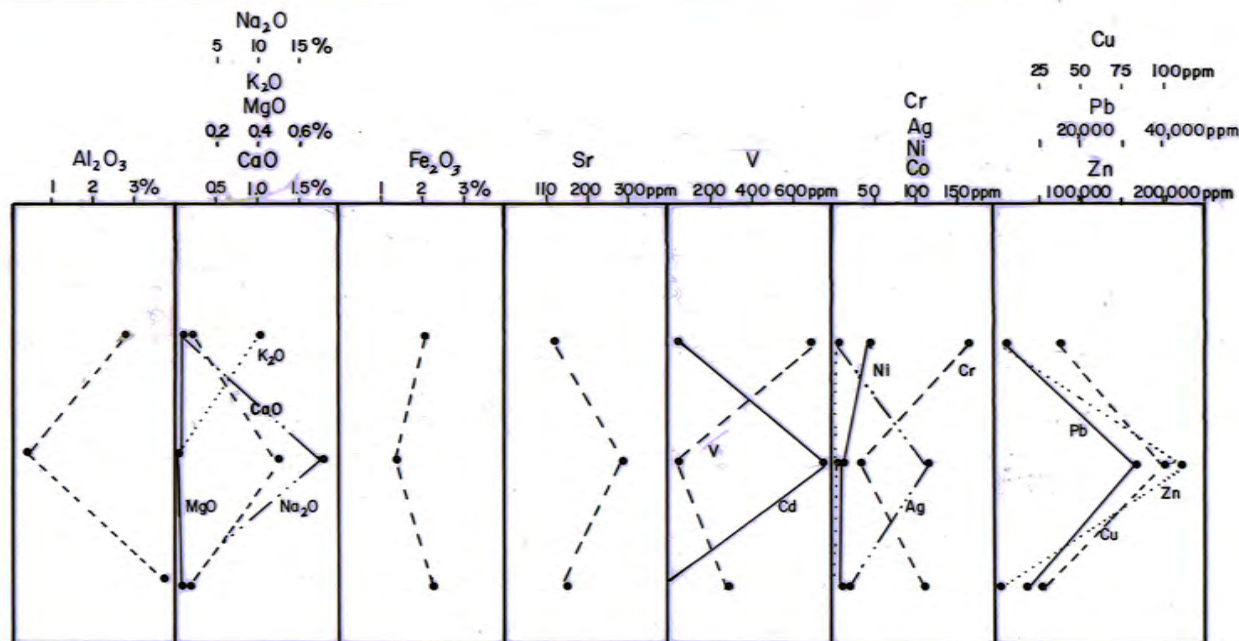
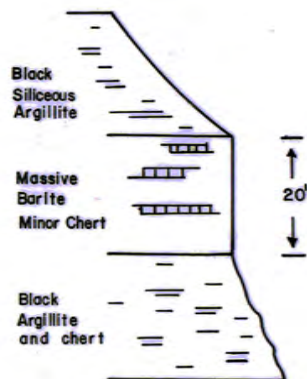
### LEGEND

- SOIL SAMPLE SITE
- MY6B - SAMPLE NAME

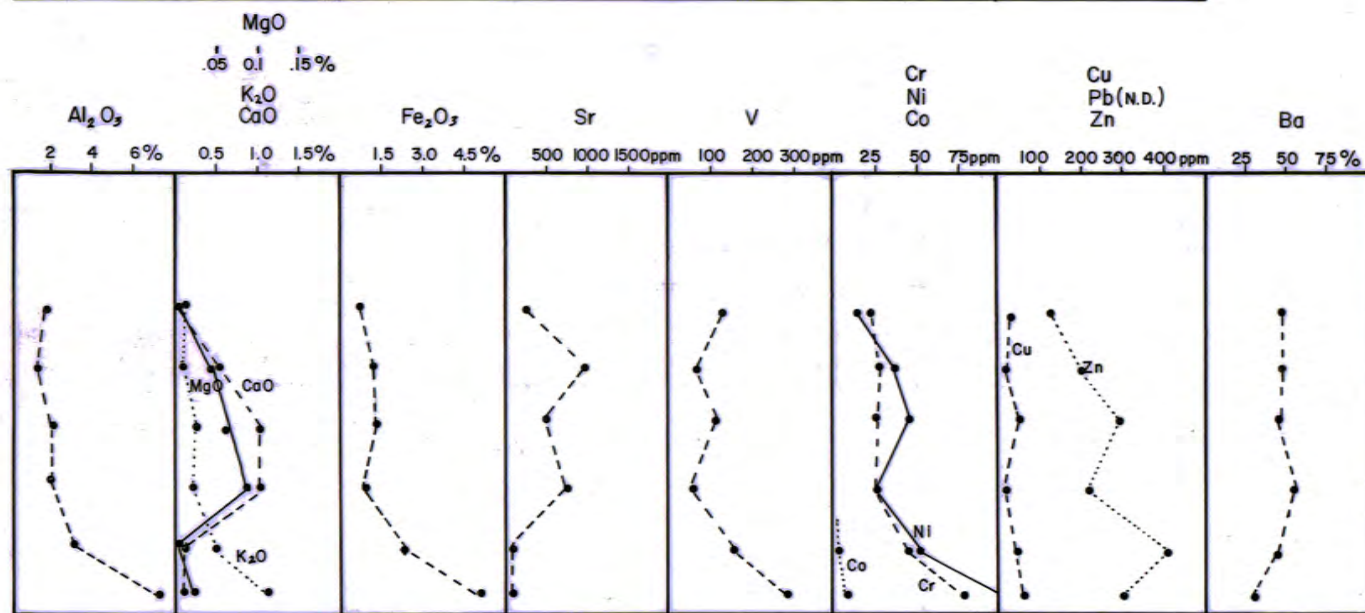
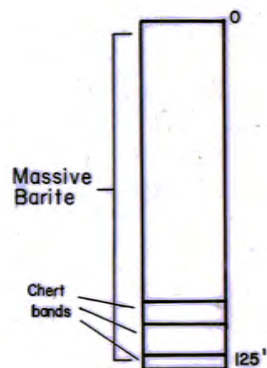
## DETAIL AREA 105 J 2 MACMILLAN PROJECT

SCALE: 1" = 1000'  
 DRAWN BY: R.H.  
 DATE: NOV 3, 1976

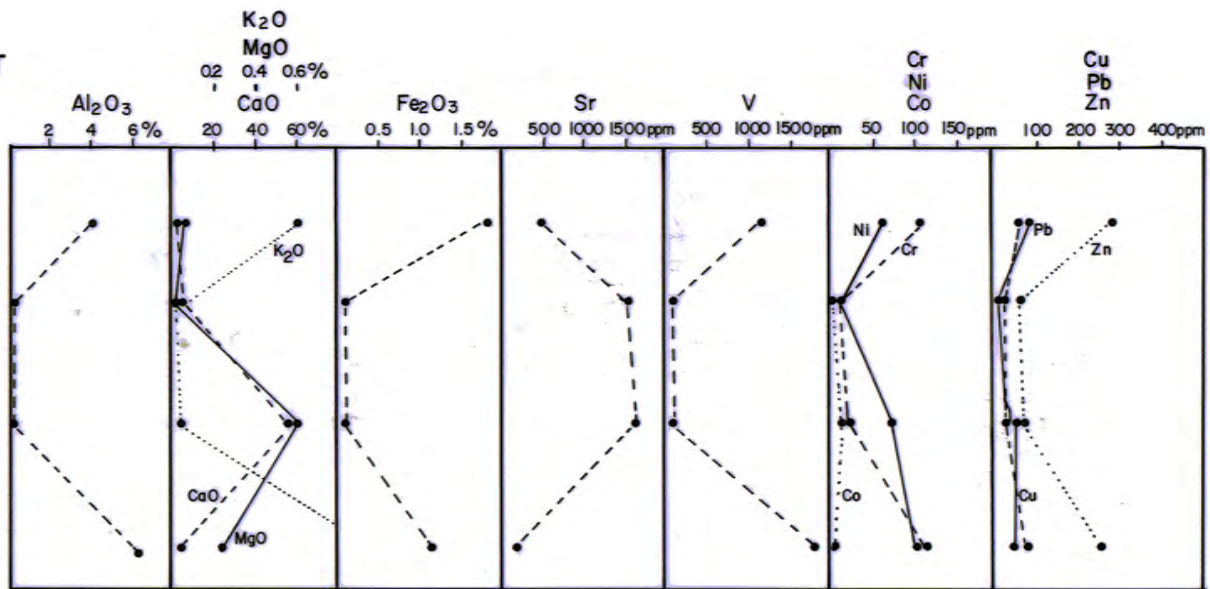
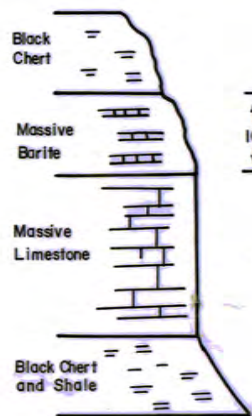
### TOM DEPOSIT (East Zone)



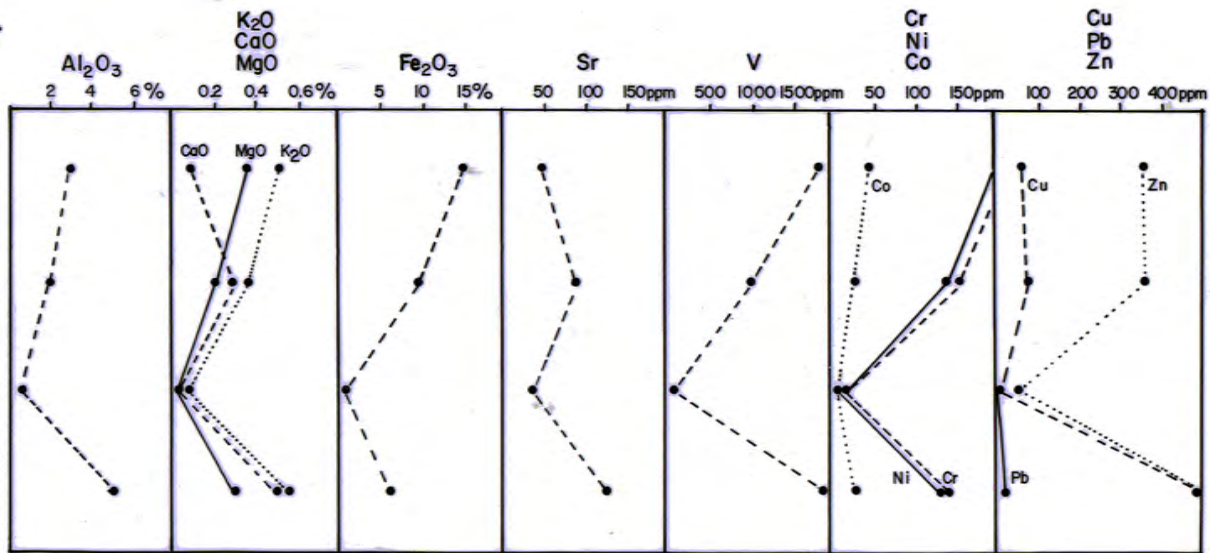
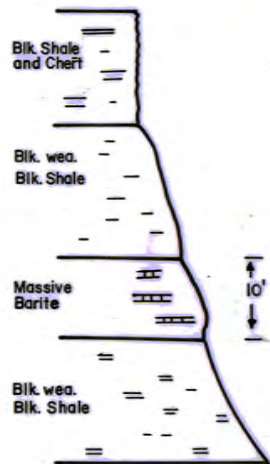
### ORO BARITE DEPOSIT



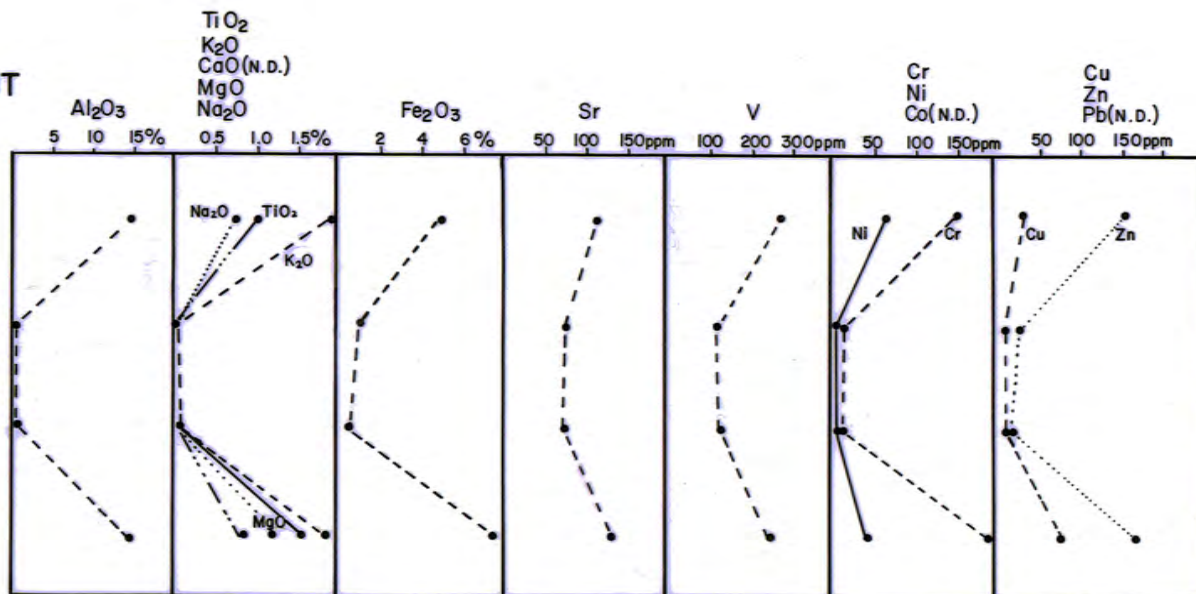
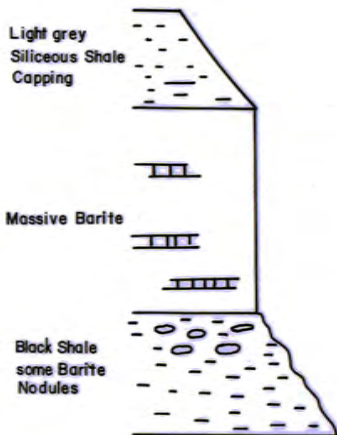
### CATHY BARITE DEPOSIT



### HESS BARITE DEPOSIT



### MOOSE BARITE DEPOSIT



### TEA BARITE DEPOSIT

