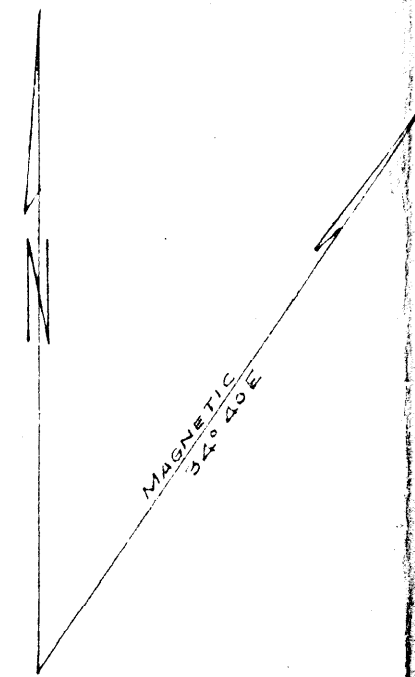
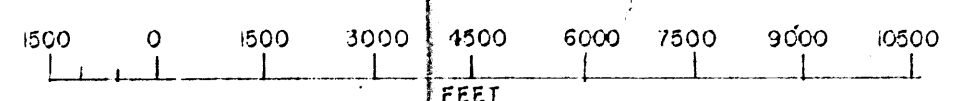


NOTICE

THIS MAP IS ISSUED AS A PRELIMINARY GUIDE FOR WHICH THE DEPARTMENT OF NORTHERN AFFAIRS AND NATIONAL RESOURCES WILL ACCEPT NO RESPONSIBILITY FOR ANY ERRORS, INACCURACIES OR OMISSIONS WHICH MAY OCCUR ON THE SHEET BEFORE ADEQUATE SURVEYS HAVE BEEN MADE.

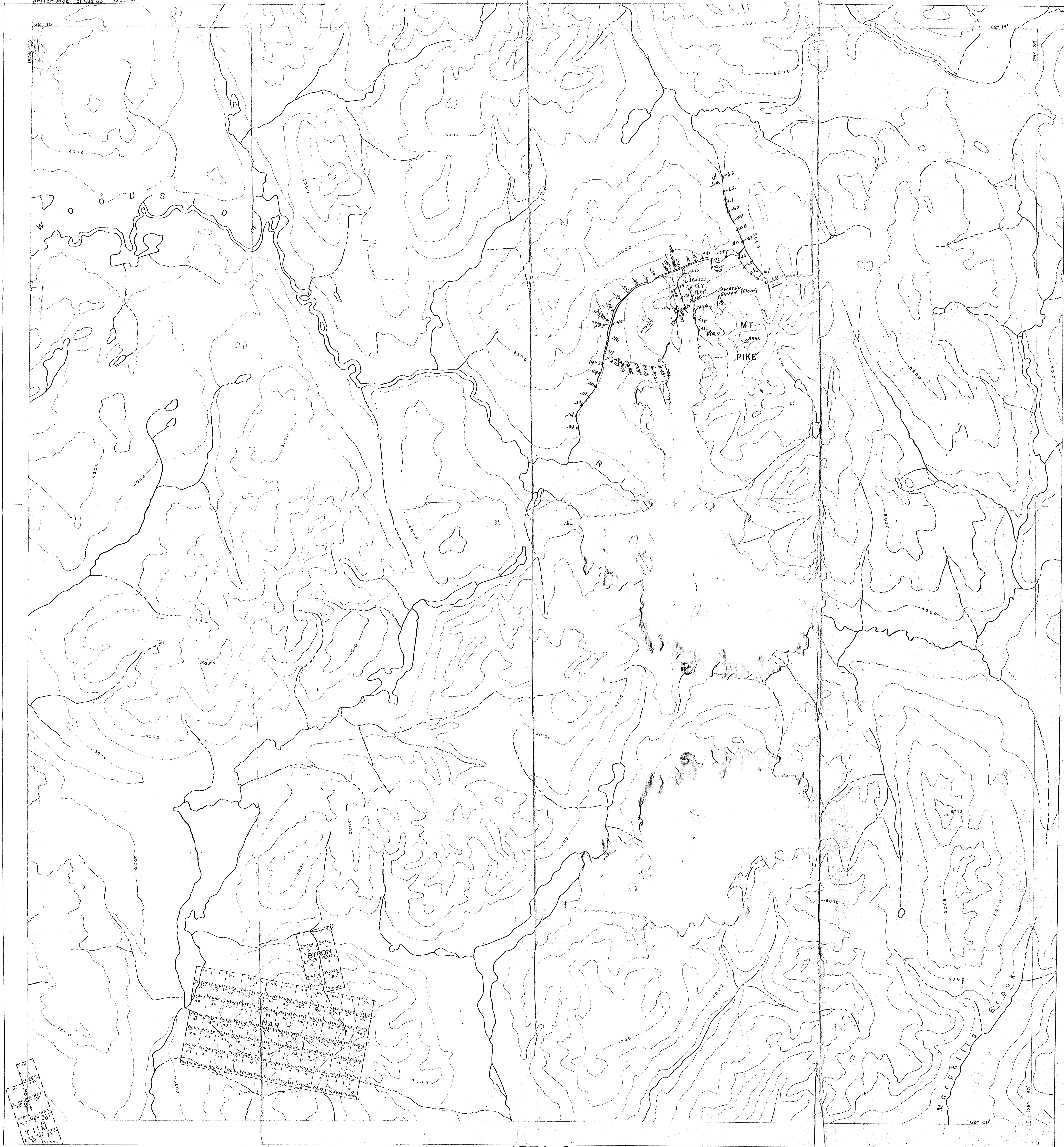
SHEET 105-1-4



105J-8	105I-5	105I-6
105J-1	105I-4	105I-3
105H-16	105H-13	105H-14

WHITEHORSE 24 Oct 55
31 Aug 66

Pike River, Mackenzie Pass



Map scale and projection information:
Scale: 1:50,000
Projection: UTM
Zone: 18N
Datum: NAD 83