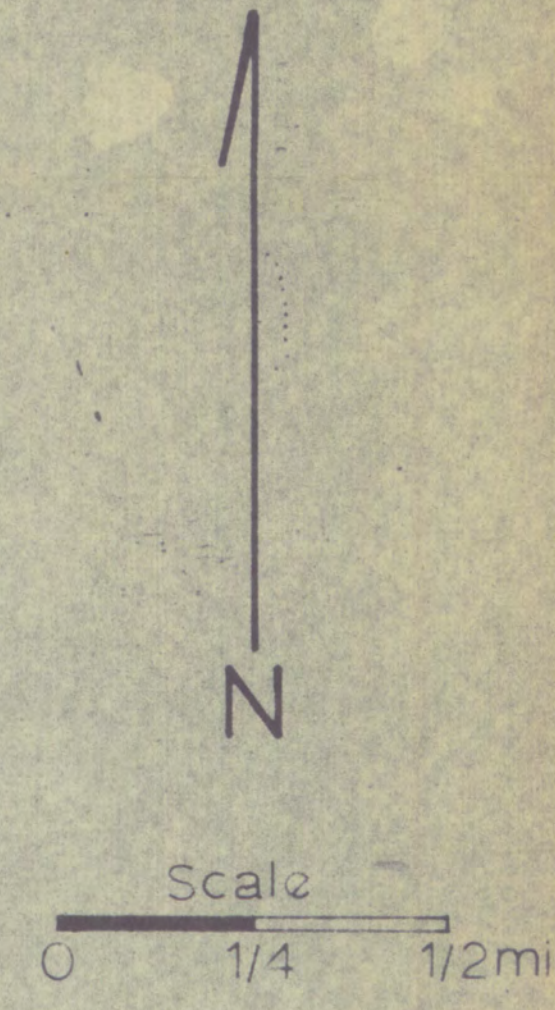


129°30'W
62°30'N

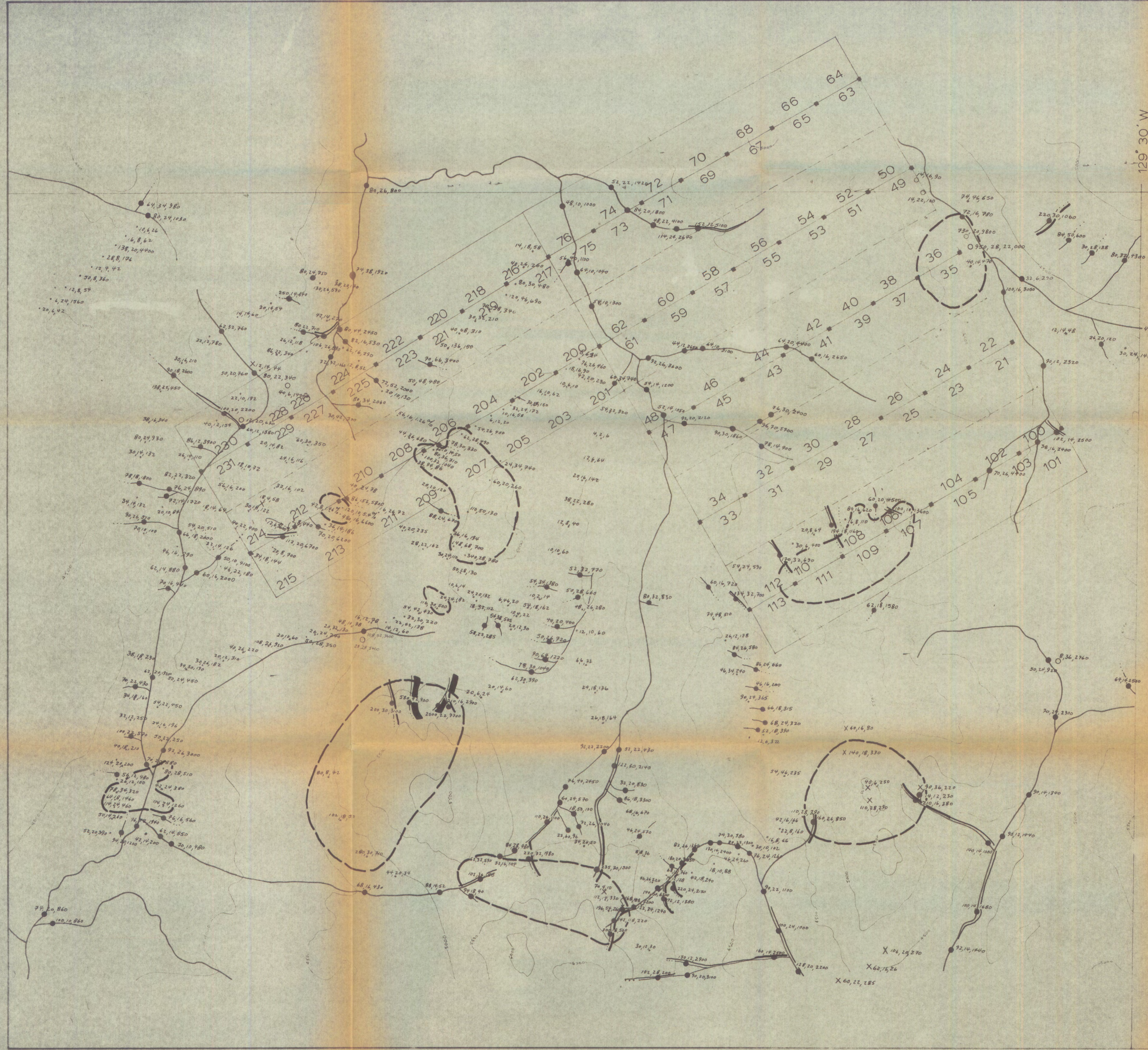


1051-5
TAP GROUP
DYNASTY EXPLORATIONS LTD
SELWYN PROJECT - 1973
REGIONAL GEOCHEMISTRY ; VALUE

LEGEND

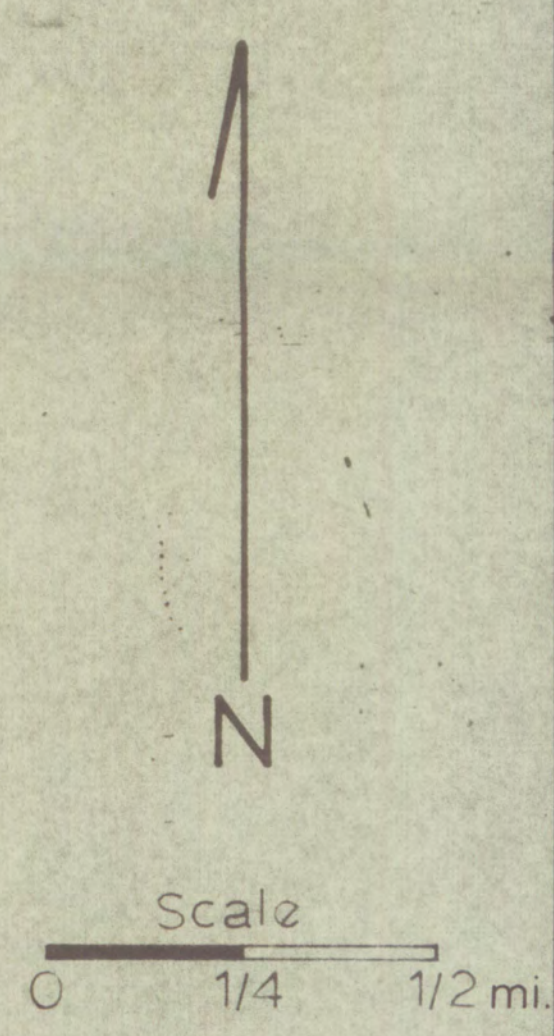
—+—	claim line, post, name	●	silt - soil
○	sample name: S3G657	x	rock
(6.5)	pH:	o	other
---	outline of anomalous areas	12	integrated value:
—	silt worms	P=Pb, C=Cu, Z=Zn	metal characteristic:
—	Interval value		
—	≥ 18		
—	12 - 16		
—	8 - 10		
—	= 6		

MAP: 5 Scale: 1 in = 1/4 mi



129° 30' W

62° 30' N

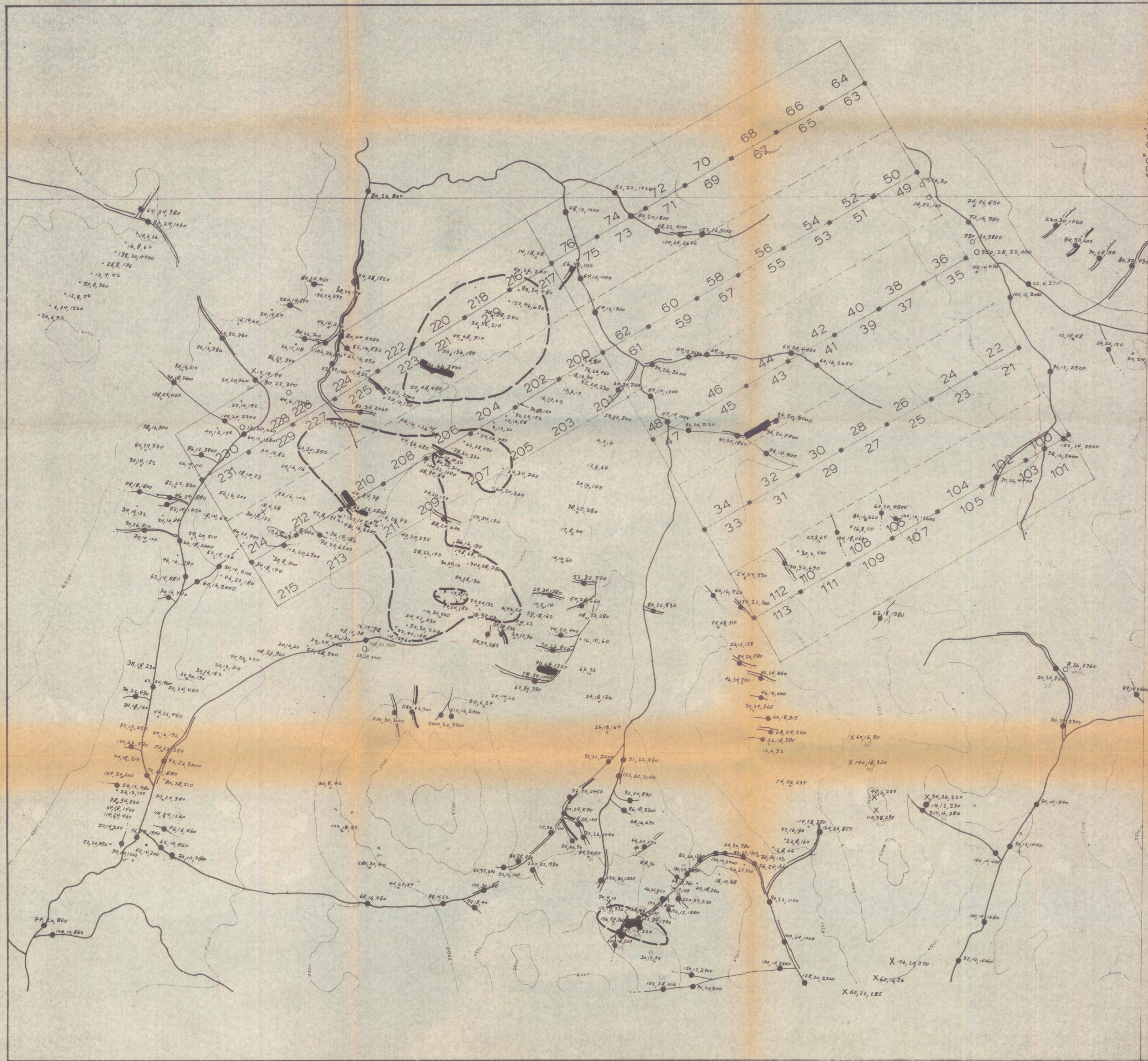


1051-5
TAP GROUP
 DYNASTY EXPLORATIONS LTD
 SELWYN PROJECT - 1973
 REGIONAL GEOCHEMISTRY ; Cu

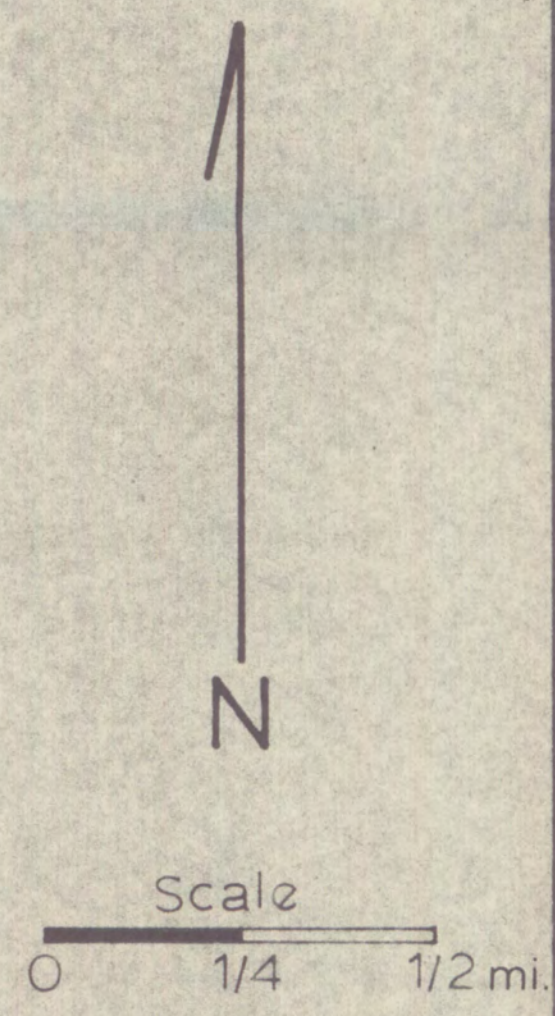
LEGEND

<p>— claim line, post, name</p> <p>● silt • soil</p> <p>○ analysis in ppm: 54, 31, 323 Cu, Pb, Zn</p> <p>— anomalous areas</p> <table border="1" style="margin-left: auto; margin-right: auto;"> <thead> <tr> <th style="text-align: center;">silt worms</th> <th style="text-align: center;">Interval ppm Cu</th> </tr> </thead> <tbody> <tr> <td style="text-align: center;">█</td> <td style="text-align: center;">≥ 260</td> </tr> <tr> <td style="text-align: center;">▬</td> <td style="text-align: center;">160 - 259</td> </tr> <tr> <td style="text-align: center;">▬</td> <td style="text-align: center;">100 - 159</td> </tr> </tbody> </table>	silt worms	Interval ppm Cu	█	≥ 260	▬	160 - 259	▬	100 - 159	<p>x rock o other</p>
silt worms	Interval ppm Cu								
█	≥ 260								
▬	160 - 259								
▬	100 - 159								

MAP: 6 Scale: 1 in = 1/4 mi



129° 30' W
62° 30' N



1051-5
TAP GROUP
DYNASTY EXPLORATIONS LTD
SEIWYN PROJECT - 1973
REGIONAL GEOCHEMISTRY ; Pb

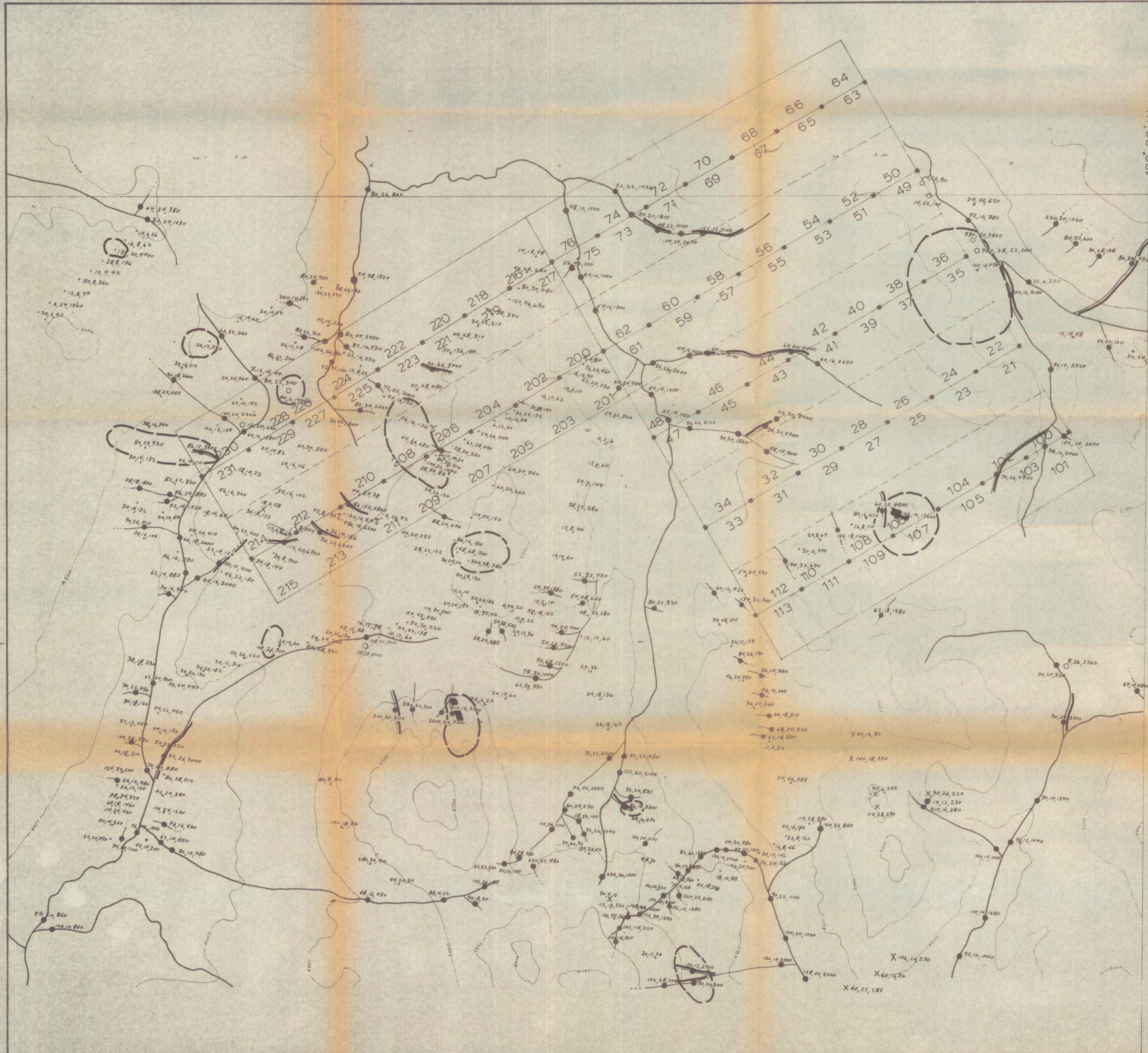
LEGEND

claim line, post, name
 analysis in ppm: 54, 31, 323
 Cu, Pb, Zn
 anomalous areas

sample type: ● silt ● soil
 x rock ○ other

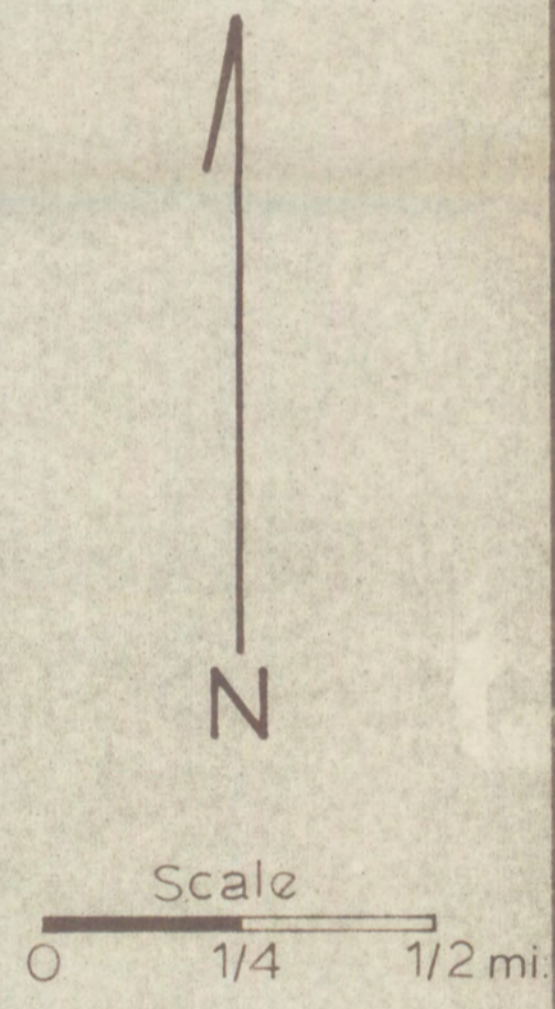
silt worms	Interval ppm Pb
	≥ 56
	35 - 55
	24 - 34

MAP: 7 Scale: 1 in = 1/4 mi



129° 30' W

62° 30' N



1051-5
TAP GROUP

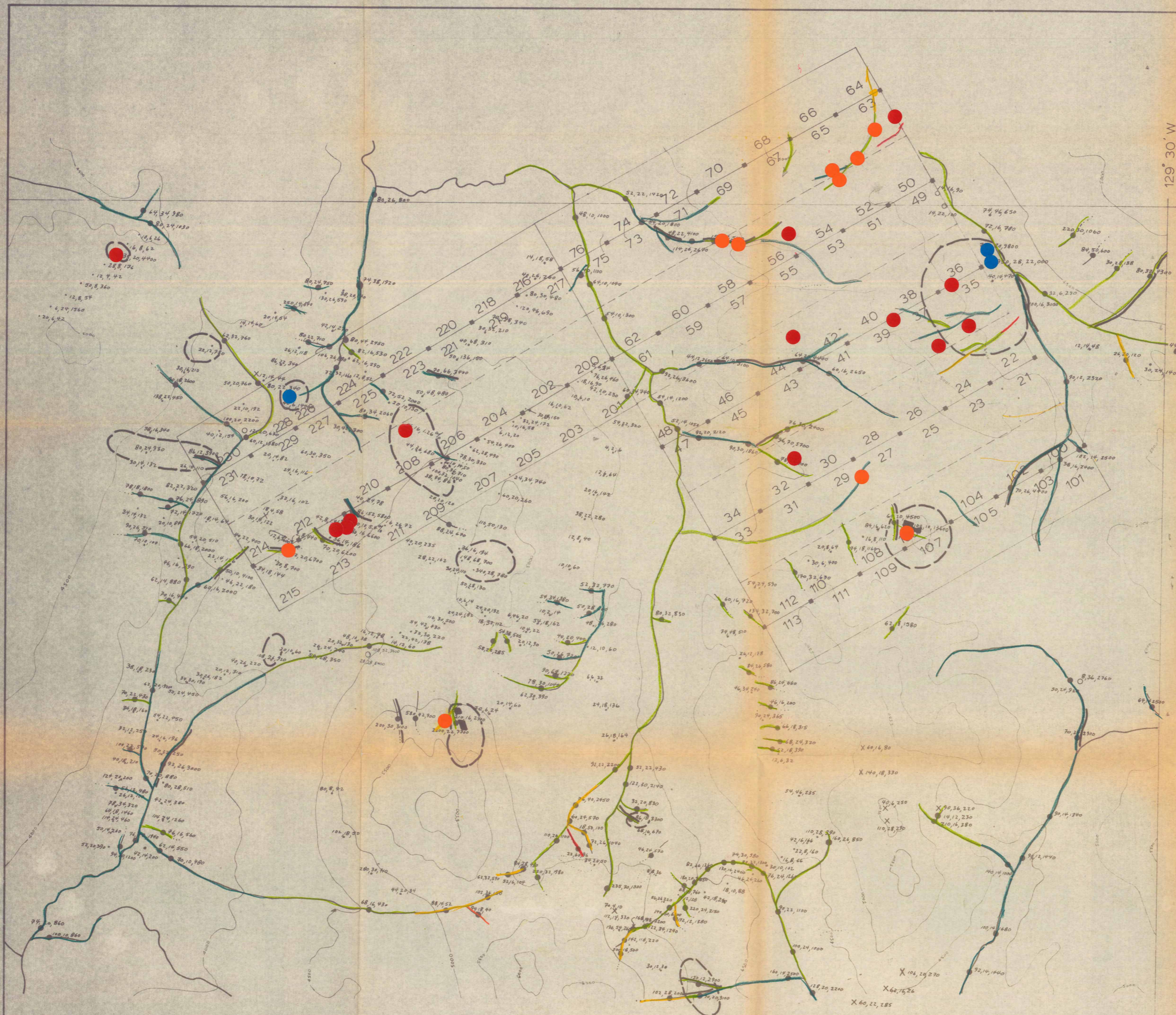
DYNASTY EXPLORATIONS LTD
SELWYN' PROJECT - 1973

REGIONAL GEOCHEMISTRY ; Zn

LEGEND

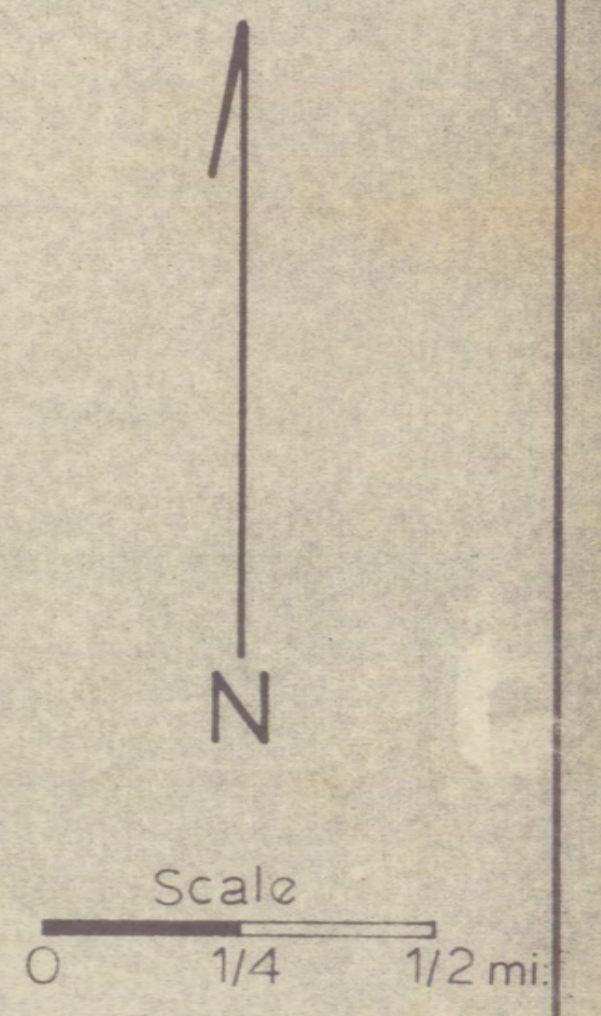
<p>— claim line, post, name analysis in ppm: 54, 31, 323 Cu, Pb, Zn</p> <p>--- anomalous areas</p> <p style="text-align: center;">silt worms interval ppm Zn</p> <p style="text-align: center;"> ≥ 7200 2900 - 7199 </p>	<p>● silt soil x rock o other</p>
--	---------------------------------------

MAP: 8 Scale: 1 in = 1/4 mi



129° 30' W
62° 30' N

PH
7.1 → 8.0
6.1 → 7.0
5.1 → 6.0
4.1 → 5.0
3.1 → 4.0



● - OTHERS.
● - POP A - SOIL } ZINC.
● - POP A - SILT.

1051-5
TAP GROUP
DYNASTY EXPLORATIONS LTD
SELWYN' PROJECT - 1973
REGIONAL GEOCHEMISTRY ; Zn

LEGEND

— claim line, post, name sample type: ● silt ● soil
analysis in ppm: 54, 31, 323 x rock o other
Cu, Pb, Zn

--- anomalous areas

silt worms	Interval ppm	Zn
██████████	≥ 7200	
██████████	2900 - 7199	
██████████		

MAP: **8** Scale: 1 in = 1/4 mi

TAP.

~~PROSPE~~ MAP WHERE POSSIBLE
AT 500' SPACING.

A) WATER SAMPLES[^] FROM
4 CREEKS DRAINING
TO NE FROM TAD.

B) SILTS AT \pm 250'
SPACES FROM SAM.

C) SAMPLED PROFILES.

2 NEAR T 63 & 64

4-5 NEAR T 24, 37, 38, 40

~~2~~

2 NEAR T 212, 213.

D) AUGERED SOIL SAMPLES,
 \geq 3' (OR REFER TO
SOIL PROFILES)

- IN 500' SPACE B-W

GRID TO COVER CU ANOMALY-
AND EXTENDED NE.