

GEOLOGICAL AND GEOCHEMICAL REPORT

DYN CLAIM GROUP

Watson Lake Mining District  
Yukon Territory

Longitude : 129°24' W.

Latitude : 62°33' N.

N.T.S. 105-I-11

Field Work covering the period  
June 17th to August 7th, 1973  
Report and Interpretation  
October, 1973

By:

John D. Curry, P. Geol.

DYNASTY EXPLORATIONS LIMITED

October, 1973

TABLE OF CONTENTS

INTRODUCTION		
	Location and Access .....	1
	General .....	1
GEOCHEMISTRY		
	General .....	5
	Integrated Value .....	5
	Reconnaissance Geochemistry .....	7
	Detail Geochemistry .....	7
GEOLOGY	.....	8
SUMMARY	.....	10
RECOMMENDATIONS	.....	10
TABLE I	List of Claims	(iii)
TABLE II	Persons Involved in Work Program	(iii)
TABLE III	Classification of Dyn Samples	p.5
TABLE IV	Calculation of Integrated Value Metal Characteristic	p.6
TABLE V	Geologic Formations	p.9
APPENDIX I	Summary of Costs	
APPENDIX II	Affidavit Supporting Summary of Costs	
APPENDIX III	Vouchers Supporting Summary of Costs	

LIST OF MAPS AND FIGURES

Figure 1            Index Map - Claim Group - scale 1"= 16 miles  
Figure 2            Gull, Dyn, Dea Groups - scale 1"= ½ mile

IN POCKET AT BACK OF REPORT

Map        1            Dyn-Dea Groups            - scale 1"= ¼ mile  
Map        2            Dyn Group Geology        - scale 1"= ¼ mile  
Map        3            Dyn Group Geochemistry - scale 1"= ¼ mile  
Map        4            Dyn Group Geochemistry - scale 1"= ¼ mile  
Map        5            Dyn Group, Pits in  
                 vicinity S3C471L        - scale 1"= 2'

TABLE I  
LIST OF CLAIMS

<u>Claim</u>	<u>Claim Number</u>	<u>Grant Number</u>	<u>Recording Date</u>
DYN	1-24 inclusive	Y71139-Y71162	December 18, 1972

TABLE II  
PERSONS INVOLVED IN WORK PROGRAM

John D. Curry	B.Sc., P. Geol.	Apt. 904, 9909-104th St., Edmonton, Alberta
Colin Godwin	B.A.Sc., P. Eng.	330-355 Burrard Street, Vancouver 1, B.C.
D. McCune	Geological Assistant	4021 W.13th Avenue, Vancouver, B.C.
G. May	Assistant	1379 W.58th Avenue, Vancouver 14, B.C.
L. Dellow	Assistant	1620 E.36th Avenue, Vancouver 15, B.C.
S. Morris	Cook	c/o Tom Stokie, P.O. Box 92, Fernie, B.C.

# DYNASTY EXPLORATIONS LIMITED

330 MARINE BUILDING  
355 BURRARD STREET  
VANCOUVER 1, B. C.

## GEOLOGICAL AND GEOCHEMICAL REPORT DYN CLAIM GROUP

### INTRODUCTION

#### Location and Access

The Dyn Group is located approximately 108 miles east-northeast of Ross River, Y.T. (see Figure 1), on N.T.S. sheet 105-I-11 (see Figure 2). The property is in Yukon Territory but adjacent to Northwest Territories. Elevation of the property is approximately 5,000 feet and it lies almost entirely above treeline.

Access to the property has been by ski-equipped aircraft in winter on Dyn Lake (see Figure 2) and by helicopter from one of the few lakes (i.e. Cominco Lake) in the area that can be utilized by float planes. Dyn Lake is marginally suitable for float-equipped aircraft and break-up for this lake in 1973 was the beginning of July. A winter road from Tungsten, N.W.T. to within ten miles of the property was used by Placer Development during the winter of 1972-73 and construction of an all-weather road between Tungsten and the Placer Howard's Pass property is likely.

#### General

Claims Dyn 1 to Dyn 24 were staked during the winter of 1972-73 in response to the Placer lead-zinc discovery at Howard's Pass (see Table I: List of Claims).

Reconnaissance geochemical samples were collected over the fourteen days from June 17th to June 30th and the six days

DYNASTY EXPLORATIONS

SELWYN PROJECT-1973

CLAIM GROUPS:

- A: Prevo
- B: Pas
- C: Gull and Dyn
- D: Dea
- E: Tam
- F: Joy and Ajax
- G: Tap
- H: Ms
- I: Sand
- J: Gun
- K: Kee

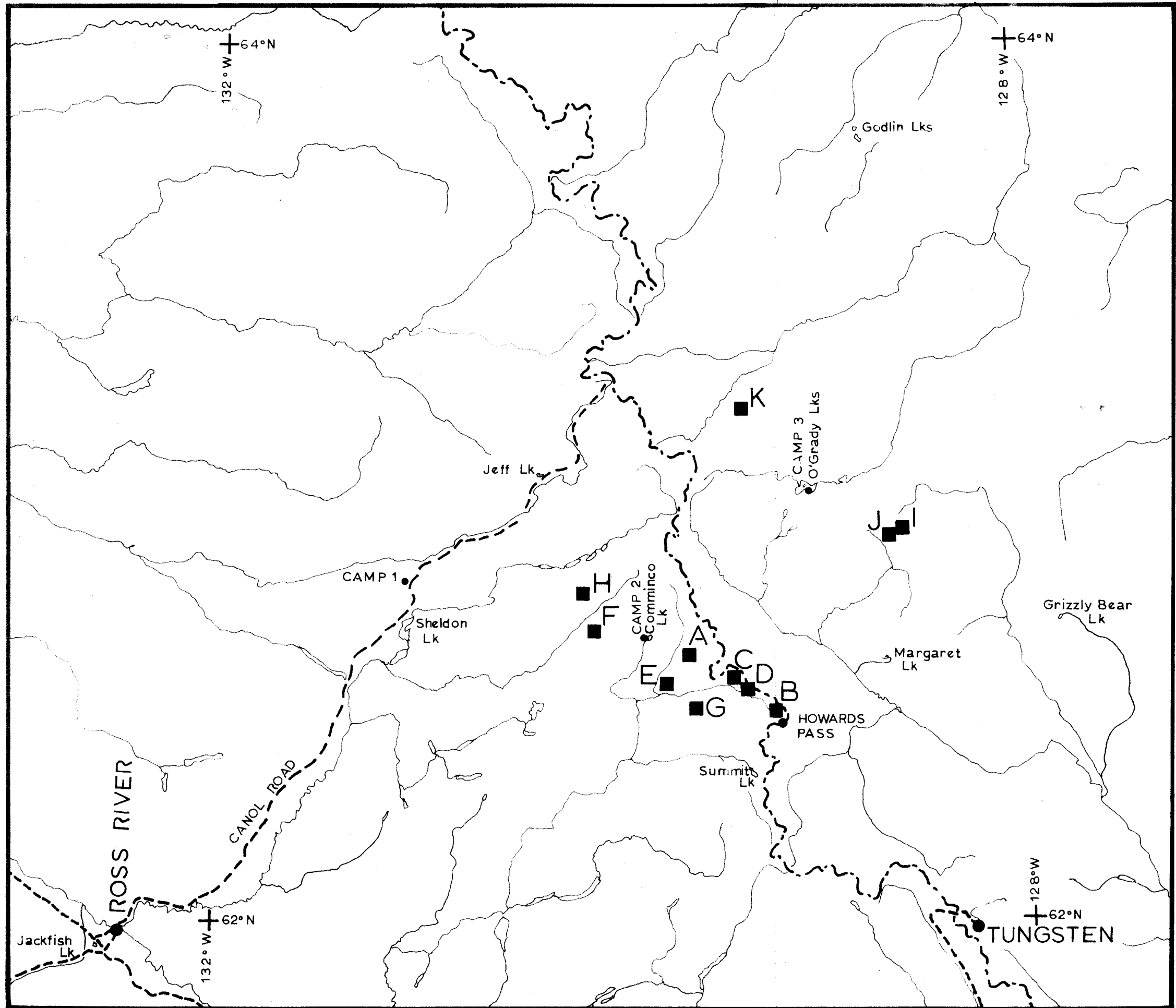
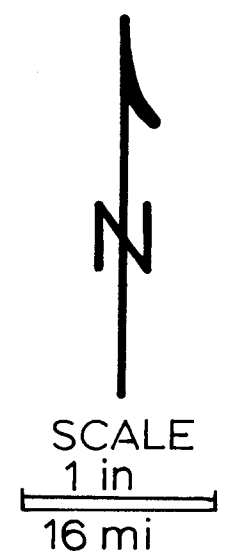
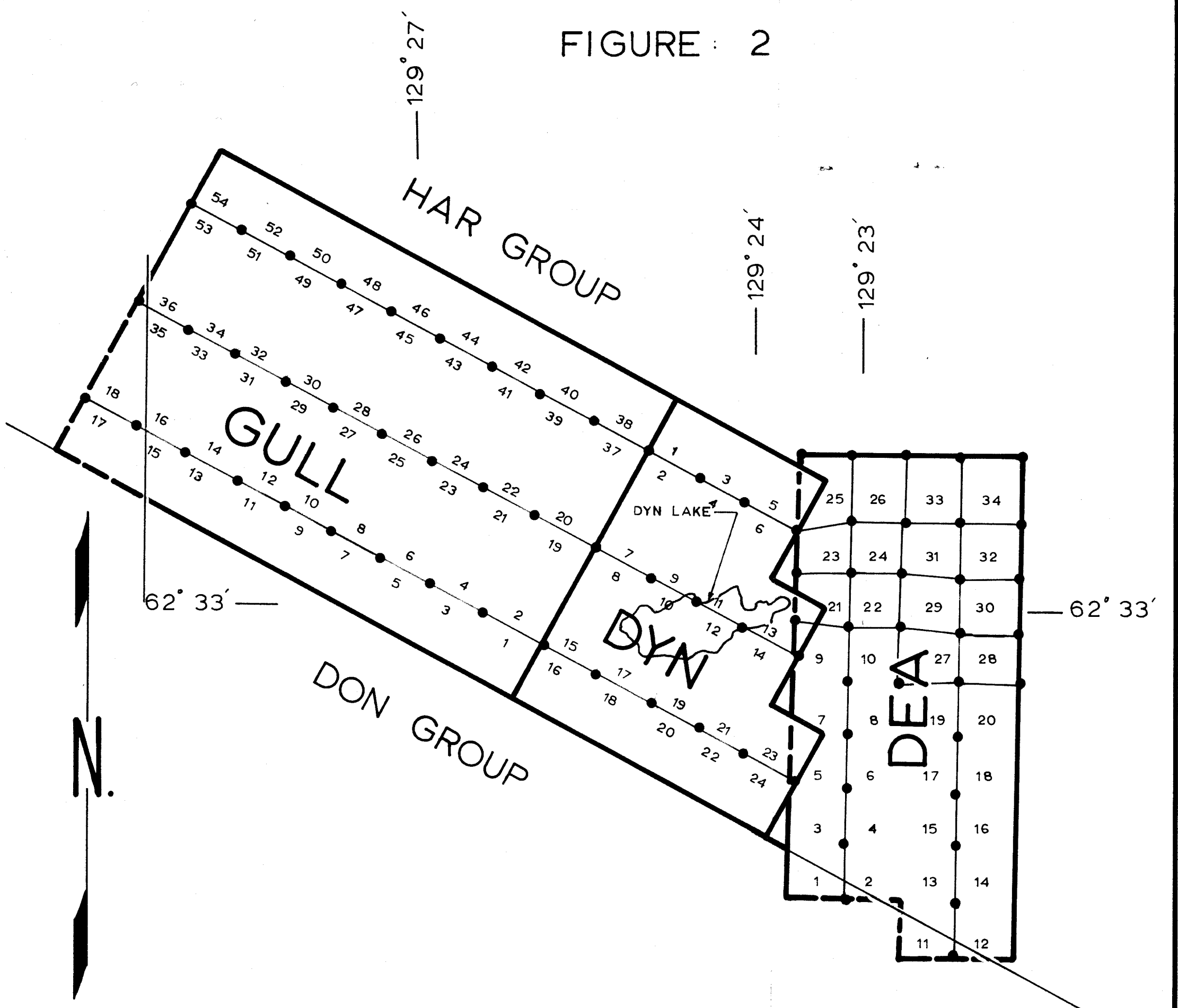


FIGURE 1:  
Index Map  
Claim Groups

FIGURE 2

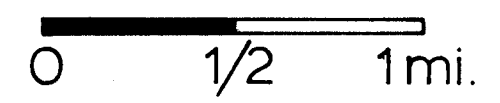


DYNASTY EXPLORATIONS

# GULL DYN DEA GROUPS

N.T.S.: 105 I-11

Scale: 1 in. = 1/2 mi.



## LEGEND

- claim outline
- claim post
- 1/2 — claim line, name

SELWYN PROJECT  
1973

from July 7th to July 12th and the group was mapped on a scale of 1 inch to  $\frac{1}{4}$  mile. On August 7th, 1973, four pits were dug on claim Dyn 7 and rock and soil geochemical samples were collected. No significant targets were located as a result of this work.

Table II is a list of persons involved in the work program.

GEOCHEMISTRY

General

Table III classifies the type and number of samples taken on the Dyn Group. Analyses for copper, lead and zinc were performed by Acme Analytical Laboratories Ltd., 6455 Laurel Street, Burnaby 2, B.C. Analysis was by atomic absorption on perchloric acid digestion of minus 80 mesh sample.

TABLE III: CLASSIFICATION OF DYN SAMPLES

<u>Type</u>	<u>Approx. Area</u>	<u>Geochem: Cu, Pb, Zn.</u>		
		<u>Soil</u>	<u>Rock</u>	<u>Silt</u>
Regional	1.8 sq. miles	188	12	28
Detail	(4 pits)	<u>11</u>	<u>2</u>	<u>0</u>
	<u>TOTALS</u>	<u>199</u>	<u>14</u>	<u>28</u>

Integrated Value

An even number called here the integrated value for copper, lead and zinc is plotted at each sample site with a letter C (for copper, P for lead and Z for zinc) that defines the abundant metal(s) or metal characteristic(s) at the site.

Table IV shows how to calculate an integrated metal value for a site. The purpose of this scheme is to provide a summary map that will ensure that no anomalies from a single or additive geochemical result are lost. Zoning of metals should become apparent from progressions in metal characteristics.

TABLE IV: CALCULATION OF INTEGRATED VALUE AND METAL CHARACTERISTIC

A geochemical interpretation scheme for a total value representing copper + lead + zinc with pH taken into account.

<u>RANGE (PPM) AND COLOUR</u>			
<u>Metal</u>	<u>Red (925)</u>	<u>Green (909)</u>	<u>Blue (903)</u>
Copper	≥ 120	90 - 119	70 - 89
Lead	≥ 50	40 - 49	30 - 39
Zinc	≥ 1000	600 - 999	300 - 599
Value	6	4	2

Notes:

(a) Adjustment for pH

if pH ≤ 5.0:

Copper, multiply ppm by 2  
 Lead, do not change  
 Zinc, multiply ppm by 5

(b) Bonus for High Results

<u>Bonus</u>	<u>Copper</u>	<u>Lead</u>	<u>Zinc</u>
2	240-359	100-149	2000-2999
4	360-479	150-199	3000-3999
6	≥ 480	≥ 200	≥ 4000

(c) Colour code for total value: Copper + Lead + Zinc

<u>Value</u>	<u>Colour</u>	<u>Interpretation</u>
≥ 18	Red (925)	High anomaly
12 to 16	Orange (918)	Intermediate anomaly
8 & 10	Green (909)	Low anomaly
6	Blue (903)	High threshold
4	Purple (931)	Low threshold
2 & 0	Blank	Background

(d) Metal character noted for copper, lead and zinc by: C, P, Z, respectively, only if value for each metal is ≥ 6.

### Reconnaissance Geochemistry

Map 1 is a blow-up of air photo A12343-355 to a scale of 1 inch to  $\frac{1}{4}$  mile. Map 3, a print of an overlay of Map 1, shows locations for all reconnaissance samples with sample name, type, pH (where applicable) and an integrated value for copper, lead and zinc. Map 4, a print of an overlay of Map 1, shows copper, lead and zinc results from reconnaissance geochemistry. Sample S3M471, which contained 78 ppm copper, 100 ppm lead and 620 ppm zinc, was the highest geochemical result obtained.

### Detail Geochemistry

Four pits were put down in the vicinity of sample S3M471 (see Map 5) and some moderately interesting results were obtained from geochemical samples (S3C975L: 460 ppm copper, 34 ppm lead and 3980 ppm zinc). Results improve generally with increased depth of sampling. Bedrocks yield anomalous copper and zinc values but are far below levels of even moderate economic interest.

GEOLOGY

Map 2 is a print of an overlay from Map 1 and shows the general geology of Dyn Group. Table V illustrates geological formations on the group. 'Wavy-bedded' limestone (Unit 1) consisting of laminated buff and black-weathering dolomitic rock and grey limestone pebbles and bands is the lowest member of the sequence underlying Dyn Group. The unit probably grades upward into thinly laminated buff and black-weathering 'transitional' dolomitic rock (Unit 2) which is not seen in outcrop or float. The central part of the group is apparently underlain by black, sometimes calcareous shale (Unit 4), which occupies a synclinal trough or basin as defined to the north and south by east-southeasterly trending limestone ridges. The limestone ridges probably coincide with anticlinal structures, although attitudes in the limestone are confused and may reflect complex cross folding and/or faulting. Buff-weathering, pyritic, dolomitic argillite (Unit 5) occurs in float south of Dyn Lake and a fault is implied between Units 1 and 5, although this could reflect thinning of Unit 4.

Two right-handed faults, at approximately  $030^{\circ}$ , traverse the southeastern part of the claims and the area northwesterly from the group.

More detail mapping is not predicated because outcrops on the group are scarce.

TABLE V: GEOLOGICAL FORMATIONS

6	Black (calcareous) shale
5	Buff to orange weathering argillite, with black streaks, sometimes dolomitic and calcareous; pyrite blebs, disseminated pyrite
4	Black shale, partly calcareous; cherty shale, some pyrite
1a	Grey to black shaly limestone
1	Wavy-bedded limestone transitional rock plus grey limestone pebbles and bands

SUMMARY

Some anomalous copper and zinc geochemical values were obtained from soils and rocks on claim 7, which is underlain by black shales (Unit 4) considered to be stratigraphically similar to shales containing lead-zinc mineralization at Howard's Pass. No economically significant geochemical or geological targets were defined by the 1973 work program.

RECOMMENDATIONS

No strong targets have emerged from work conducted on Dyn Group to date. The fact that there is a comparable geological section between Howard's Pass and Dyn Group is encouraging. Sufficient work has been done in order to hold the claims at least until December 18th, 1974. No further work is recommended at this time, although the geology of the region may be better understood in the near future and additional work might then be considered.

Respectfully submitted,

John D. Curry, P. Geol.

October, 1973

Appendix I  
Schedule "A"

SUMMARY OF COSTS  
DYN CLAIM GROUP

	<u>Schedule</u> <u>Number</u>	<u>Wages</u>	<u>Expenditures</u>	<u>Total</u>
Geology	"B"	\$1,068.81	\$	
Geochemistry	"C"	594.01		
Assays	"C"	404.42		
Camp & Field Expenses	"D"	72.26	763.52	
Miscellaneous Transport.	"E"		188.80	
Rotary Wing	"E"		1,239.90	
Fixed Wing	"E"		183.51	
		<u>\$2,139.50</u>	<u>\$2,375.73</u>	<u>\$4,515.23</u>
District Expense	6%			<u>\$ 270.91</u>
				<u>\$4,786.14</u>
Administration	10%			<u>\$ 478.61</u>
				<u>\$5,264.75</u>
				<u>TOTAL COSTS</u>

**DYNASTY EXPLORATIONS LIMITED**

330 MARINE BUILDING  
355 BURRARD STREET  
VANCOUVER 1, B. C.

AFFIDAVIT SUPPORTING SUMMARY OF COSTS

I, COLIN GODWIN, Geologist, Dynasty Explorations Limited, of Vancouver, British Columbia, do hereby state that, to the best of my knowledge and belief, the statement of costs presented in this report (Geological and Geochemical Report - Dyn Group) is both correct and true.

\_\_\_\_\_  
Colin Godwin

\_\_\_\_\_  
Date

\_\_\_\_\_  
A Notary Public  
for British Columbia

DYNASTY EXPLORATIONS LIMITED  
 DYN CLAIM COST SUMMARY  
 TO OCTOBER 31, 1973

Schedule 'A'

	Schedule No.	WAGES	EXPENDITURES	TOTAL
GEOLOGY	"B"	106881		
GEOCHEMISTRY	"C"	59401		
ASSAYS	"C"	40442		
CAMP + FIELD EXPENSES	"D"	7226	76352	
MISC. TRANSPORTATION	"E"		18880	
ROTARY WING	"E"		123990	
FIXED WING	"E"		18351	
		<u>213950</u>	<u>237573</u>	451523
DISTRICT EXPENSE 6%				27091
				<u>478614</u>
ADMINISTRATIVE EXPENSE 10%				47861
				<u>526475</u>
TOTAL				<u>526475</u>

140-06

NAME . . . . . DYN - Geology

CARD NO.

Schedule "B"

DATE	Ø	REFERENCE NO.	DEBIT	CREDIT	BALANCE	PROOF
JUL 73	Ø	11	27278		27278	41284
31 AUG 73	Ø	11	14361	} wages	41639	55645
SEP 73	Ø	23	5545		47184	61190
31 OCT 73	Ø	11	19720		66904	80910
31 OCT 73	Ø	16	15710		82614	96620
		B <sub>1</sub>	242.67		1068.81	
			WAGES	" F "	1.068.81	
			ALLOWABLE EXPENDITURES		<u>1.068.81</u> " A "	

140-01

NAME . . . DYN - PROPERTY EXAM  
sta geology & geochem

CARD NO.

Schedule "B<sub>1</sub>"

DATE	φ	REFERENCE NO.	DEBIT	CREDIT	BALANCE	PROOF
30 JUN 73	0	11	485.33	wages	485.33	625.34

GEOLOGY

242.67<sup>"B"</sup>

GEOCHEM

242.66<sup>"C"</sup>

ALLOWABLE EXPENDITURES

485.33

140-08

NAME Dyn - Geochem

CARD NO.

Schedule C

DATE	φ	REFERENCE NO.	DEBIT	CREDIT	BALANCE	PROOF
JUL 73	0	1 1	3 2 8.7 7		3 2 8.7 7	4 6 8.8 5
31 AUG 73	0	1 1	2 2 5 8	wages	3 5 1.3 5	4 9 1.4 3
31 OCT 73	0	2 3	4 0 4.4 2	assays	7 5 5.7 7	8 9 5.8 5
		B <sub>1</sub>	242.66	wages	998.43	

wages	" F "	594.01
Assays	" C "	404.42

ALLOWABLE EXPENDITURES 998.43



NAME . . . . . Pyn. - Camp . . . . .  
.....  
.....

CARD NO.

Schedule "D"

DATE	φ	REFERENCE NO.	DEBIT	CREDIT	BALANCE	PROOF
JUL 73	0	11	( 36.13 )		36.13	176.34
31 AUG 73	0	11	F. { 36.13 } wages		72.26 ✓	212.47
31 OCT 73	0	22	763.52 camp + field expense		835.78	975.99

WAGES	F	72.26
CAMP + FIELD EXPENSES	D	763.52
<u>TOTAL ALLOWABLE EXPENDITURES</u>		<u>835.78 "A"</u>

NOTE: included in this report are copies of  
invoices for amounts of \$200.00 and over. Copies  
of other invoices will be provided upon request.

# DYNASTY EXPLORATIONS LIMITED

## ALLOCATION OF CAMP AND FIELD SUPPLIES ON A MANDAY BASE

Schedule D.

PROJECT NAME & NO.	MANDAYS										TOTAL	CAMP + FIELD SUPPLIES			
	S	F	M	A	M	T	T	A	S	O					
MS 131 ST										5.0	5.0	8484			
MS 131 OT									8.0	1.0	18.0	30541			
TAP 132 ST										3.0	3.0	5090			
TAP 132 OT									8.0	3.0	25.0	42418			
PAS 133 ST															
PAS 133 OT					3					22.0	3.0	69.0	117072		
SAND 134 ST										3.0	2	5.0	8484		
SAND 134 OT										9.0	28	37.0	62778		
GUN 135 ST											1	1.0	1697		
GUN 135 OT											1	1.0	1697		
KEE 137 ST											5	5.0	8484		
KEE 137 OT															
PREVO 138 ST															
PREVO 138 OT					3	15				14.0	27.0	16.0	75.0	127252	
GULL 139 ST															
GULL 139 OT					3	11				27.0	11.0	24.0	76.0	128949	
DYN 140 ST															
DYN 140 OT					3	14				20.0	5.0	3.0	45.0	76352	
OEX 141 OT	3	5	5.5	12	18.5	219.5	111.0	138.0	23.5			589.5	1000153	FACTOR = 16.967 / manday	
DEA 142 ST															
DEA 142 OT					3	14				21.0	5.0	4.0	47.0	79745	
TAM 143 ST															
TAM 143 OT					3					31.0	M.		48.0	81442	
J/A 144 ST															
J/A 144 OT										2.0	5.0	5.0	2.0	60.0	101802
PRO RATABLZ					9.5										
	3	5	5.5	12	18.5	383.5	279.0	274.0	111.5	56.0			1109.5	18,824.40	
Run hours camp cost.					9.5										
	3	5	5.5	12	9.0	383.5	279.0	274.0	111.5	56.0			1109.5	18,824.40	

141-21  
Selwyn - Camp

Schedule D<sub>2</sub>

NAME .....

CARD NO.

19944.16

2008537

DATE	φ	REFERENCE NO.	DEBIT	CREDIT	BALANCE	PROOF
10 SEP 73	0	19.90	48.00	materials	19.992.16	20.133.37
SEP 73	0	20.06	101.48	supplies	20.093.64	20.234.85
SEP 73	0	20.07	7.80	communications	20.101.44	20.242.65
SEP 73	0	11	242.57	wages	20.344.01	20.485.22
SEP 73	0	13	104.42	radio rental	20.448.43	20.589.64
SEP 73	0	5	171.05	(b)	20.619.48	20.760.69
31 OCT 73	0	20.31	10.45	papers	20.629.93	20.771.14
31 OCT 73	0	20.38	113.12	supplies	20.743.05	20.884.26
31 OCT 73	0	20.45	13.50	maps	20.756.55	20.897.76
31 OCT 73	0	20.22	54.47	supplies	20.811.02	20.952.23
31 OCT 73	0	20.47	11.70	comm	20.822.72	20.963.93
31 OCT 73	0	20.43	3.00	supplies	20.825.72	20.966.93
31 OCT 73	0	20.21	27.93	supplies	20.853.65	20.994.86
31 OCT 73	0	1.03			20.538.65	20.679.86
31 OCT 73	0	2		(b) 315.00	20.367.60	20.508.81
31 OCT 73	0	1.6	2764.53		23.132.13	23.273.34
31 OCT 73	0	2.2	10001.53		33.133.66	33.274.87
31 OCT 73	0	2.2		18824.40	14.309.26	14.450.47
31 OCT 73	0	20.56	100.5		14.319.31	14.460.52
4 NOV 73	0	20.62	190.50		14.509.81	14.651.02

DISTRIBUTABLE COSTS \$ 20,367.60  
 LESS: WAIVES OF SMORIS 1,543.20  
\$ 18,824.40 D<sub>1</sub>

NAME Dyn - Transp. ....

CARD NO.

Schedule "E"

DATE	φ	REFERENCE NO.	DEBIT	CREDIT	BALANCE	PROOF
25 JUL 73	0	7707A 18.13	169.00	rotary wing 1.3 hr.	169.00	309.22
17 AUG 73	0	18.92	191.04	rotary wing 1.46 hr.	360.04	500.26
19 SEP 73	0	19.49	168.84	rotary wing 1.3 hr.	528.88	669.10
25 SEP 73	0	19.73	34.00	misc travel expense	562.88	703.10
31 OCT 73	0	17	290.12	rotary wing 2.24 hr.	853.00	993.22
31 OCT 73	0	18	212.78	fuel cost.	1065.78	1206.00
31 OCT 73	0	19	154.80	misc transportation	1220.58	1360.80
1 OCT 73	0	20	183.51	fixed wing support.	1404.09	1544.31
1 OCT 73	0	21	208.12	rotary wing support.	1612.21	1752.43

MISC. TRANSPORTATION	188.80 "A"
ROTARY WING	1,239.90 "A"
FIXED WING	183.51 "A"
ALLOWABLE EXPENDITURES	<u>1,612.21</u>

NOTE: included in this report are copies of invoices for amounts of \$20000 and over. Copies of other invoices will be provided upon request.

DYNASTY EXPLORATIONS LTD.  
RE DISTRIBUTION OF ROTARY WING INVOICES

INVOICE #	MS	TAP	PINS	SAND	GUN	KEE	DRUM	GULL	DYN	SEAMS	OFF REFORM	FUEL	DEA	TAM	51A	Other
1009A-3 SHOULD BE	131	132	133	134	135	137	138	139	140	141	142	143	144	145	146	147
LESS: RECORDED																
981-3 SHOULD BE																
LESS: RECORDED																
1343A-3 SHOULD BE	57168.00	81450.00	949.00				637.00	273.00	247.00	1001.00	10946.00	1813	221.00	1170.00	728.00	2543
LESS: RECORDED	1183.00	819.00					494.00	181.00	169.00	325.00	1735.00	11.90	443.00	1170.00	728.00	544.57
2331-3 SHOULD BE																
LESS: RECORDED																
1983A-3 SHOULD BE	57145.00	34.00	5765.00	5763.40			142.86	520.14	299.00	702.00	5729.00	14.00	90.91	715.09	256.76	259.76
LESS: RECORDED	130.00	559.00	1828.00				142.86	520.14	299.00	702.00	5729.00	14.00	90.91	715.09	256.76	259.76
2582-3 SHOULD BE																
LESS: RECORDED																
2690-3 SHOULD BE	3038		182.28	303.78				60.75		577.14				60.75	425.26	
LESS: RECORDED																
2442B3 SHOULD BE																
LESS: RECORDED																
STRIKING	169.00	390.00	39.00	64.57	(420)	(420)										
SERVICE																
OFF PRODUCTION																
ON PRODUCTION	140.41	(3092)	726.46	1259.63			141.89	870.63	290.12				157.34	1110.71	730.47	
FUEL																

FREE L. 103  
 PHOTO 147 149  
 BEARING PLATA 110 151

DYNASTY EXPLORATIONS LIMITED  
 SELWYN PROJECT FUEL ALLOCATION  
 BASED ON HOURS FLOWN

Schedule E2

PROJECT/PROPERTY	#	BASE		COST ALLOCATION			
		STARTING	INDIRECT/DIRECT	STARTING	INDIRECT	DIRECT	
M.S.	131-22	13	9.1	43.91		307.34	
TAP	132-22	30	7.3	101.32		246.55	
PAS	133 ✓	3	11.6	10.13		391.78	
SAND	134 ✓	17	14.6	57.42		493.10	
GUN	135 ✓	98		330.98			
KEE	137 ✓	49		165.49			
PREVO	138 ✓		7.3			246.55	
GULL	139 ✓		11.9			401.91	
DYN	140 ✓		6.3			212.78	
SELWYN IND	141 ✓		28.5		962.56		
SELWYN DIRECT	141 ✓			208.8		7052.17	
DEA	142 ✓		4.5			151.98	
TAM	143 ✓		17.5			591.04	
JOY/ATAX	144 ✓		12.9			435.68	
		210	28.5	311.8	709.25	962.56	10530.89
		361.3					
						12202.69	

FACTOR =  $12,202.69 \div 361.3 = \$33.774 / \text{hr}$

Cost of fuel to be allocated.

Basic fuel cost less drum returns  
 Fixed wing transportation cost.

\$689.94  
 6512.75  
 12,202.69  
 \$1.845 per gal

ES (4)

# DYNASTY EXPLORATIONS LIMITED

## ALLOCATION OF MISC. TRANSPORTATION OF MEN + SUPPLIES ON MAN DAY BASIS

Schedule E3

PROJECT			MAN DAYS										ALLOCATION					
			NAME & NO.	S	F	M	A	M	J	J	A	S	O	TOTAL	\$			
MS	131	ST										5.0	5.0	17.20				
MS	131	OT										9.0	8.0	1.0	18.0	61.92		
TAP	132	ST										3.0			3.0	10.32		
TAP	132	OT										14.0	8.0	3.0	25.0	86.00		
PAS	133	ST														—		
PAS	133	OT										22.0	4.0	3.0	69.0	237.36		
SAND	134	ST										3.0	2		5.0	17.20		
SAND	134	OT										9.0	28		37.0	127.28		
GUN	135	ST											1		1.0	3.44		
GUN	135	OT											1		1.0	3.44		
KEE	137	ST											5		5.0	17.20		
KEE	137	OT																
PREVO	138	ST																
PREVO	138	OT										3	15	14.0	27.0	16.0	75.0	258.00
GULL	139	ST																
GULL	139	OT										3	11	27.0	11.0	24.0	76.0	261.44
DYN	140	ST																
DYN	140	OT										3	14	20.0	5.0	3.0	45.0	154.80
OEX	141	OT	3	5	5.5	12	18.5	21.5	11.0	13.8	23.5					589.5	2028.68	
DEA	142	ST																
DEA	142	OT										3	14	21.0	5.0	4.0	47.0	161.68
TAM	143	ST																
TAM	143	OT										3		31.0	M.		48.0	165.12
T/A	144	ST																
S/A	144	OT										2.0	5.0	5.0	2.0	60.0	206.40	
PRO RATABLZ												9.5				—		
			3	5	5.5	12	18.5	383.5	279.0	274.0	111.5	56.0				1109.5	ESD 3817.48	
Run hours comp. cost.												9.5						
			3	5	5.5	12	9.0	383.5	279.0	274.0	111.5	56.0				1109.5	ESD 3817.48	

FACTOR  

$$= \frac{3,817.48}{1109.5} = 3.44 / \text{MAN DAY}$$

# DYNASTY EXPLORATIONS LIMITED

## ALLOCATION OF FIXED WING + ROTARY WING CAMP SUPPORT TO PROPERTIES + REGIONAL EXPLORATION ON MAN DAY BASE Schedule E4

PROJECT NAME & NO.	MAN DAYS										FIXED WING # 20	ROTARY WING # 21	
	S	F	M	A	M	T	T	A	S	O	TOTAL		
MS 131 ST										5.0	5.0	2039	2313
MS 131 OT										9.0 8.0	1.0 18.0	7340	8325
TAP 132 ST										3.0	3.0	1223	1388
TAP 132 OT										14.0 8.0	3.0 25.0	10195	11562
PAS 133 ST													
PAS 133 OT						3				22.0 4.0	3.0 69.0	28138	31912
SAND 134 ST										3.0 2	5.0	2039	2313
SAND 134 OT										9.0 28	37.0	15089	17112
GUN 135 ST											1 1.0	408	463
GUN 135 OT											1 1.0	408	462
KEE 137 ST											5 5.0	2039	2313
KEE 137 OT													
PREVO 138 ST													
PREVO 138 OT						3	15	14.0	27.0	16.0	75.0	30585	34688
GULL 139 ST													
GULL 139 OT						3	11	27.0	11.0	24.0	76.0	30993	35150
DYN 140 ST													
DYN 140 OT						3	14	20.0	5.0	3.0	45.0	18351	20812
OEX 141 OT	3	5	5.5	12	18.5	219.5	111.0	138.0	23.5		589.5	240429	272596
DEA 142 ST													
DEA 142 OT						3	14	21.0	5.0	4.0	47.0	19167	21737
TAM 143 ST													
TAM 143 OT						3		31.0	14.0		48.0	19574	22200
J/A 144 ST													
J/A 144 OT										2.0 5.0 5.1	2.0 60.0	24468	27750
PROGRATABLE						95							
	3	5	5.5	12	18.5	363.5	279.0	274.0	111.5	56.0			
Run hours camp cost.						95							
	3	5	5.5	12	19.0	383.5	279.0	274.0	111.5	56.0	1109.5	452485	513096
FACTOR	\$ ÷ TOTAL MAN DAYS											4.078	4.625

NAME Selwyn - Fct + Transp

Schedule E (4)

DATE	φ	REFERENCE NO.	DEBIT	CREDIT
				59,173.37
11 OCT 73	0	17 E1	2636.15	R wing
11 OCT 73	0	17 E1	1542.5	fuel
11 OCT 73	0	17 E1		9.124.45
1 OCT 73	0	18	962.56	
1 OCT 73	0	18	7052.17	
1 OCT 73	0	18		
1 OCT 73	0	18		12202.69
1 OCT 73	0	19	2028.68	
1 OCT 73	0	19		3817.48
1 OCT 73	0	20	2404.29	
1 OCT 73	0	20		4524.85
1 OCT 73	0	21	2725.96	
1 OCT 73	0	21		5134.96
11 OCT 73	0	5	9.80	

MISC F+T	ROTARY WING		FIXED WING		FUEL
	CAMP SERVICE	OFF PROP. EXPLORATION	CAMP SERVICE	FUEL	
3817.48	2,494.81	36,283.79	4,524.85	6,512.75	5,539.69
	12,636.15				150.25
	E1	(9,124.45)			
3817.48	5,130.96	27,159.34	4,524.85	6,512.75	5,689.94
E3	E4		E4	E2	E2

NAME Selwyn Frt. Transp.

DATE	φ	REFERENCE NO.	DEBIT	CREDIT	MISC F&T	ROTARY WING		FIXED WING		FUEL
						CAMP SERVICE	OFF PROP. EXPLORATION	CAMP SERVICE	FUEL	
				61,659.72	2,318.90	550.68	32,547.00	3,090.10	5,648.27	7,064.59
25 SEP 73	0	C. Godwin 19.70	51.20	expenses	51.20					
5 SEP 73	0	R Morris 19.73	34.00	transportation	34.00					
15 SEP 73	0	S Morris 19.73	34.00		34.00					
5 SEP 73	0	Yukon Auto 19.75	5.00	lunch	5.00					
15 SEP 73	0	2 reverses from		1444.18						
15 SEP 73	X 0	17	28.90		28.90					
10 SEP 73	0	Arctic Truck 19.81	42.00	rental drum head						42.00
10 SEP 73	0	TNTA 19.49	850.29	R wing		850.29				
30 SEP 73	0	19.49	651.87	F wing			651.87			
10 SEP 73	0	White Pass 19.90	201.92	fuel						201.92
10 SEP 73	0	✓ 19.90	87.93	fuel						87.93
10 SEP 73	0	W. Thompson 19.90	51.48	fuel						51.48
10 SEP 73	0	19	269.60	transportation & freight	269.60					
10 SEP 73	0	19.96	60.00	expenses	60.00					
10 SEP 73	0	19.56	84.00	accommodation & lodging	84.00					
10 SEP 73	0	White Pass 19.90	206.52	fuel						206.52
10 SEP 73	0	✓ 19.50								(82.00)
10 SEP 73	0	White Pass 19.50								(56.00)
10 SEP 73	0	✓ 19.50								(127.00)
10 SEP 73	0	TNTA 19.49	1944.13	R wing	1944.13					
10 SEP 73	0	✓ 19.49	1283.06	F wing				582.88	732.28	
10 SEP 73	0	✓ 19.49	3475.50	R wing		3475.50				
10 SEP 73	0	✓ 19.49	100.00	F wing			100.00			
10 SEP 73	0	✓ 19.49	27.20	fuel					27.20	
10 SEP 73	0	reception 5	360.47	annual						
10 SEP 73	0	drum freight 21	130.68	freight	130.68					
10 SEP 73	0	White Pass 21								(1,421.17)
10 SEP 73	0	oil 24								(420.00)
11 OCT 73	0	TNTA 19.49		fuel credit 143.48						(143.48)
1 OCT 73	0	✓ 20.44								
1 OCT 73	0	✓ 20.44		R.W. credit 589.00						(589.00)
1 OCT 73	0	YUKON FREIGHT 20.41	28.67	freight	28.67					
1 OCT 73	0	CANOL P. 20.25	140.18		140.18					
1 OCT 73	0	CURRY 20.43	413.05	accommodation	413.05					
1 OCT 73	0	✓ 20.43	27.00	misc expenses	27.00					
1 OCT 73	0	✓ 20.43	178.50		178.50					
1 OCT 73	0	C. Godwin 20.48	4.00	expenses	4.00					
1 OCT 73	0	OSPIESBURG 20.33	9.80		9.80					
1 OCT 73	0	TEPP AIR 20.34	205.00	F wing			100.00	105.00		
1 OCT 73	0	White Pass 19.50	167.00	fuel						167.00
1 OCT 73	0	2								
				59,173.37	3817.48	2,494.81	36,293.79	4,524.85	6,512.75	5,539.69

NAME Selwyn: Freight & Transp.

DATE	φ	REFERENCE NO.	DEBIT	CREDIT
			23,918.60	
26 JUL 73	0	Terr Air. 18.14	210.00	✓ F. wing
11 JUL 73	0	Deakin. 17.99	10.15	freight supplies
11 JUL 73	X 0	18.26	169.37	
1 JUL 73	0	White Pass 18.17	242.40	✓ fuel
1 JUL 73	0	TNTA 18.13	314.66	✓ F. wing
JUL 73	0	SMITH TRAV. 16	415.00	✓ transportation
11 JUL 73	0	T.N.TA. 18.13	665.25	✓ F. wing
1 JUL 73	0	N.W. NORTH 18.03	16.00	lodging
1 JUL 73	0	White Pass 18.17	96.96	✓ fuel
1 JUL 73	0	18.17	96.96	✓ fuel
1 JUL 73	0	18.17		14.00
11 JUL 73	0	18.17		drum credit 68.00
11 JUL 73	0	18.17		169.00
JUL 73	0	5	14786.06	③ accrual
4 AUG 73	0	w. Tongue 18.54	5.00	freight on supplies
4 AUG 73	0	18.54	7.00	
4 AUG 73	0	18.54	10.05	
5 AUG 73	0	2		⑤ 14786.06
1 AUG 73	0	Deakin 18.81	10.75	freight on supplies
31 AUG 73	0	18.81	9.77	
11 AUG 73	0	TATA 18.92	9813.75	✓ R. wing
11 AUG 73	0	Terr Air 18.93	200.00	✓ F. wing
11 AUG 73	0	18.98	12.81	gas
11 AUG 73	0	White Pass 19.00	854.34	✓ fuel
11 AUG 73	0	✓ 19.00	199.92	
11 AUG 73	0	✓ 19.00	1421.17	⑥ fuel
31 AUG 73	0	✓ 19.00	102.96	
11 AUG 73	0	T.N.TA. 18.92	1157.29	✓ F. wing
11 AUG 73	0	✓ 18.92	507.60	✓ R. wing
11 AUG 73	0	✓ 18.92	550.68	expenses
11 AUG 73	0	Ceduna 19.09	111.65	
11 AUG 73	0	5	10440.18	④
8 SEP 73	0	1.01		fuel 360.38
8 SEP 73	0	Adams. 19.33	15.35	expenses
9 SEP 73	0	TNTA 19.49	1153.25	✓ R. wing
9 SEP 73	0	19.49	7156.23	✓ R. wing
3475.00				
82.00				
0 SEP 73	0	New North 19.56	104.00	Travel + accomodation
1 SEP 73	0	Smith 18.89	249.00	✓ Transportation
1 SEP 73	0	TEAR AIR 18.93	2624.00	✓ F. wing
1 SEP 73	0	White Pass 19.50		✓ 212.00
1 SEP 73	0	19.50		drum 79.00
1 SEP 73	0	19.50		credit 220.00
1 SEP 73	0	19.50		90.00

MISC F&T	ROTARY WING		FIXED WING		FUEL
	CAMP SERVICE	OFF PROP. EXPLORATION	CAMP SERVICE	FUEL	
1173.00	-	14,423.77	721.67 210.00	2,314.55	5,285.61
10.15					
169.37					242.40
			183.83	130.83	
415.00			214.40	450.85	
16.00					
					96.96
					96.96
					(14.00)
					(68.00)
					(169.00)
5.00					
7.00					
10.05					
10.75					
9.77					
		9,813.75			
			200.00		
12.81					854.34
					199.92
					1,421.17
					102.96
			229.60	851.09	(23.40)
			507.60		
	550.68				
111.65					
					(360.38)
15.35					
		1,153.25			
		7,156.23			
104.00					
249.00					
			823.00	1,801.00	(212.00)
					(79.00)
					(220.00)
					(90.00)
2,318.90	550.68	32,547.00	3,090.10	5,648.27	7,064.59

61,659.72

difference of 10,440.18 covered on next sheet.

NAME . . . SELWYN . . . FREIGHT + TRANSPORTATION

attached

ROTARY WING      FIXED WING

MISC    CAMP    OFF PROP.    CAMP    FUEL    FUEL  
F+T    SERVICE    EXPLORATION    SERVICE

DATE	φ	REFERENCE NO.	DEBIT	CREDIT
4 JAN 73	0	REGID 1 4 0 1	10.77	
30 APR 73	0	OBCKYKHS-1 5.77	871.00	
10 APR 73	0	OWATEB-RT 1 5.5 6	807.84	
11 MAY 73	0	Am. Equip 1 6.4 3	323.6	
11 MAY 73	0	Duck 1 6.5 5	57.10	
11 MAY 73	0	W. Transport 1 6.7 3	37.90	
1 MAY 73	0	SMITH 1 6.9 0	83.00	
11 MAY 73	0	104 1.6 7 7	214.80	
11 MAY 73	0	TNTA 1 6.9 1	1243.50	
11 MAY 73	0	with receipt 1 6.9 8	101.88	
11 MAY 73	0	✓ 1 6.9 8	560.34	
11 MAY 73	0	✓ 1 6.9 8	305.64	
11 MAY 73	0	W.B. Auto Rent 1 6.9 9	350.79	
1 MAY 73	0	5	439.60	
21 JUN 73	0	Count Rt 1 6.6 2	29.80	
11 JUN 73	0	Acc. W. Hh. 1 6.8 5	141.55	
12 JUN 73	0	TNTA 1 6.9 1	2091.90	
22 JUN 73	0	Yukon Freight 1 7.3 3	66.68	
16 JUN 73	0	Terr. Hh. 1 6.9 2	468.00	
17 JUN 73	0	2	accrual 439.60	
4 JUL 73	x 0	4.47 1755	98.14	
5 JUL 73	0	1 7.5 6	274.56	
5 JUL 73	0	1 7.5 6	149.31	
10 JUN 73	0	1 7.6 2	51.00	
10 JUN 73	0	1 7.6 2	-	
10 JUN 73	0	1 7.6 2	64.00	
10 JUN 73	0	1 7.6 2	102.00	
10 JUN 73	0	1 7.6 2	102.00	
10 JUN 73	0	1 7.6 2	103.53	
10 JUN 73	0	1 7.6 2	155.30	
10 JUN 73	0	1 7.6 2	178.46	
10 JUN 73	0	1 7.6 2	108.88	
10 JUN 73	0	1 7.6 2	104.28	
10 JUN 73	x 0	1 7.6 3	122.1	
10 JUN 73	0	1 7.5 6	120.00	
10 JUN 73	0	5	1371.851	
7 JUL 73	0	2	1371.851	
10 JUL 73	0	White Pass 1 7.6 6	773.70	
10 JUL 73	0	1 7.6 6	(14.00)	
10 JUL 73	0	White Pass 1 7.8 6	109.53	
10 JUL 73	0	17.8-6	48.48	
10 JUL 73	0	✓ 1 7.8 6	48.48	
4 JUL 73	0	1 7.9 1	282.50	
5 JUL 73	0	TNTA 1 8.1 3	1233.187	

MISC F+T	CAMP SERVICE	OFF PROP. EXPLORATION	CAMP SERVICE	FUEL	FUEL
10.77					
				871.00	
					807.84
32.36					
57.10					
37.90					
83.00					
					2,140.80
				1243.50	
					101.88
					560.34
					305.64
350.79					
				29.80	
141.55					
66.68		2,091.90			
				268.00	200.00
98.14					
				274.56	
				149.31	(51.00)
					(64.00)
					(102.00)
					(102.00)
					103.53
					155.30
					178.46
					108.88
					104.28
					120.00
					773.70
					(14.00)
					109.53
					48.48
282.50					

23,918.60

1,173.00      14,423.77      721.67      23,145.55      5,286.66

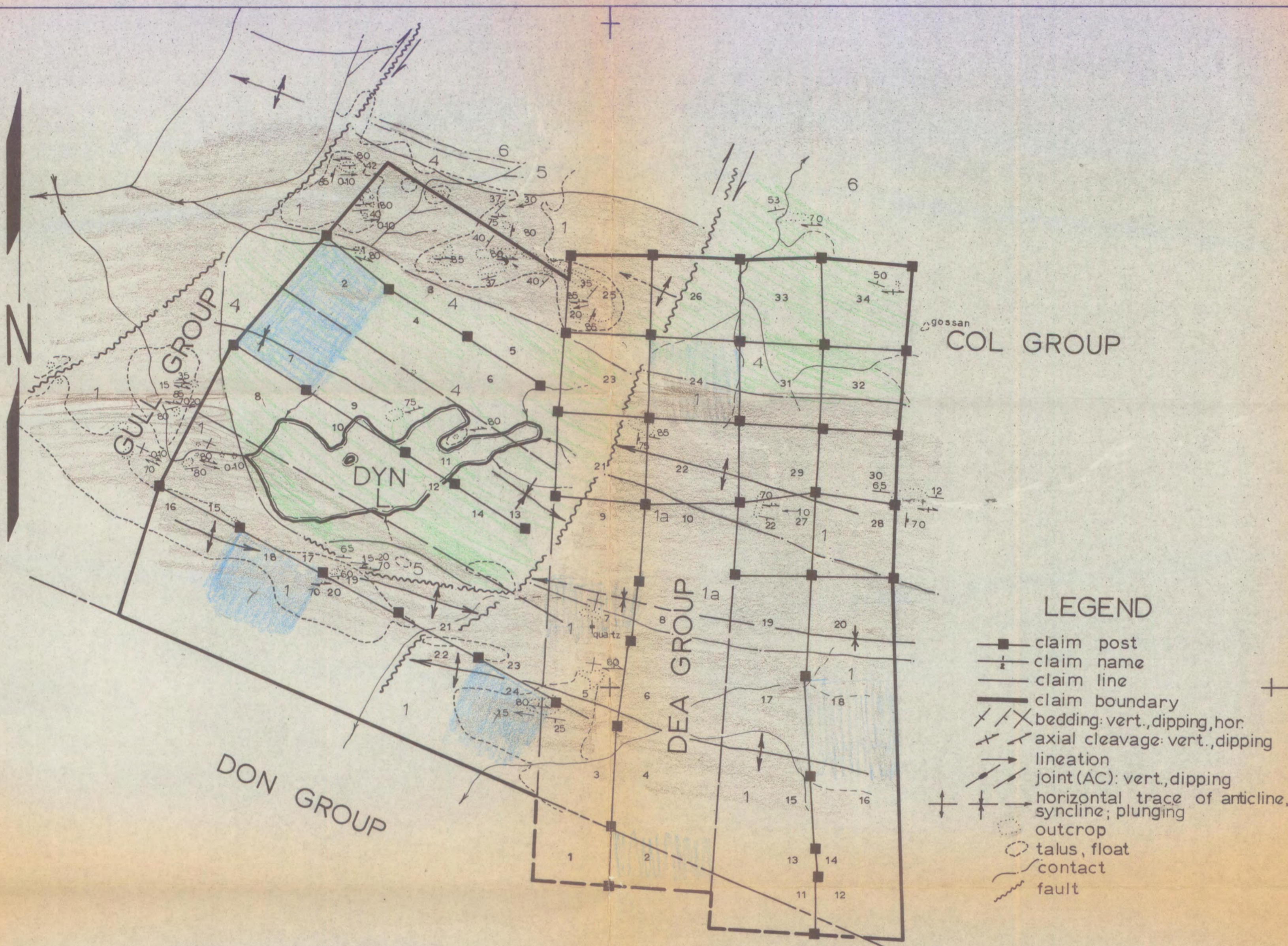
# DYNASTY EXPLORATIONS LIMITED

SUMMARY OF DYN WAGES

TO OCTOBER 31, 1973

Schedule F

	GEOLOGY		GEOCHEM		CAMP	
	D.	\$	D.	\$	D.	\$
J CURRY	7½	35021	5½	23274		
C GODWIN	6½	349.08	2½	8791		
G MAY	1½	31.25	2½	5141		
D. MC CUNE	6½	13734	7½	15831		
R. MORRIS	1	3690				
S. MORRIS					4	6452
	23	90478	18	530.37	4	6452
NON WAGE LABOUR COST 12%		10858		6364		
		101336		59401		7726
G. GODWIN BONUS		5545				
		106881		59401		7726
		B		C		D



**LEGEND**

- claim post
- claim name
- claim line
- claim boundary
- X/X bedding: vert., dipping, hor.
- + axial cleavage: vert., dipping
- lineation
- ↗ joint (AC): vert., dipping
- ⊕ horizontal trace of anticline, syncline; plunging
- outcrop
- talus, float
- contact
- fault

**GEOLOGICAL UNITS**

- 6 black (calcareous) shale. buff to orange weathering argillite, with black streaks, sometimes dolomitic and calcareous; pyrite blebs, disseminated pyrite.
- 5 black shale, partly calcareous; cherty shale, some pyrite
- 4 grey to black shaley limestone
- 1a wavy bedded limestone transitional rock plus grey limestone pebbles and bands
- 1

DYNASTY EXPLORATIONS LTD.

---

**DYN GROUP**  
N.T.S.: 1051 - 11

---

**GEOLOGY**

---

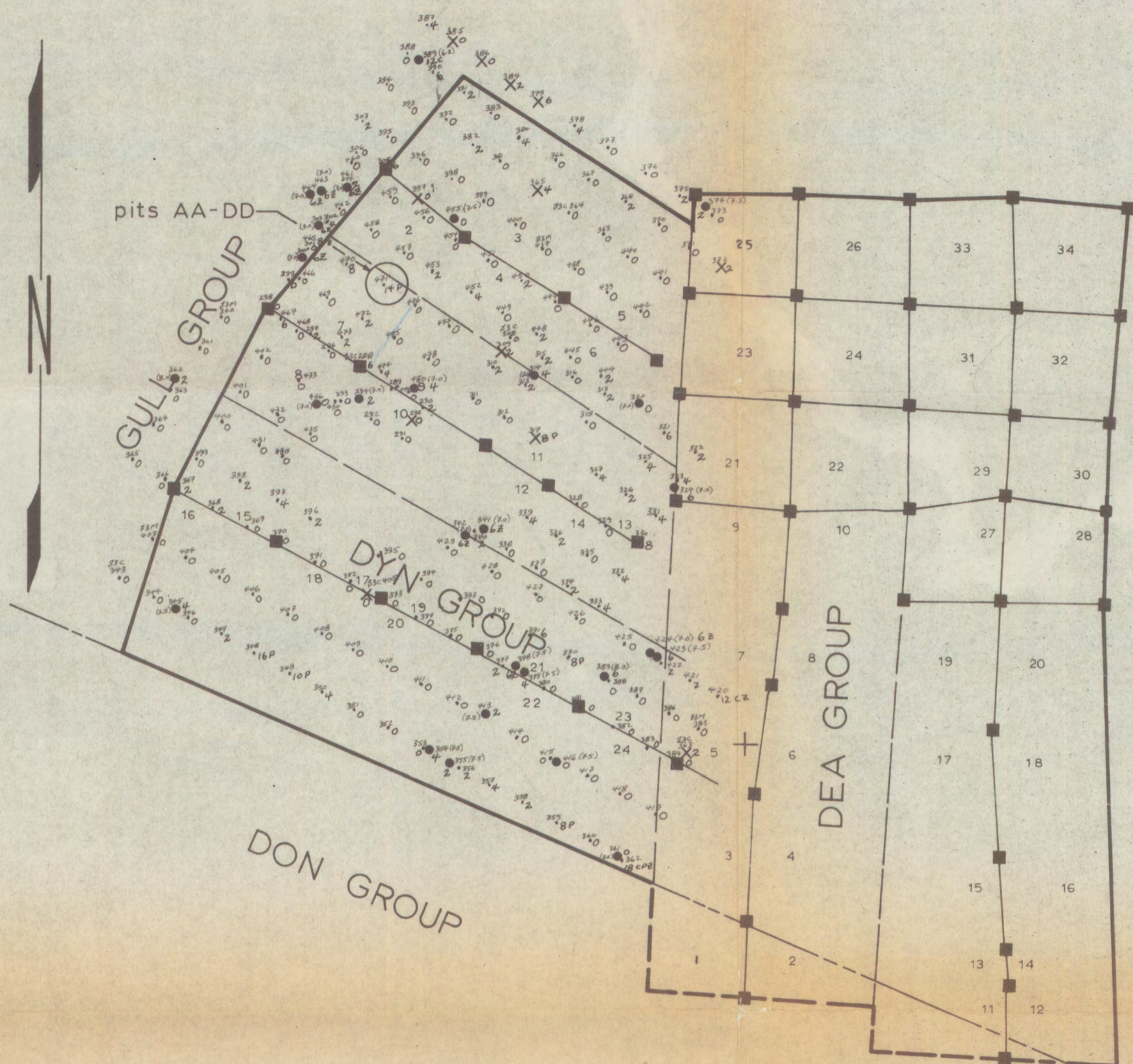
Scale: 1 in. 1/4 mi.

0      1/4      1/2      1 mi.

Geology by: John D. Curry

**MAP: 2**

photo no: A 12343-355



COL GROUP

LEGEND

- claim post
- claim name
- claim line
- claim boundary
- x rock - sample type
- silt
- o soil
- o other
- S3C127 - sample no.
- (6.5) - pH
- 13 - integrated metal value
- C=Cu, P=Pb, Z=Zn - metal character

DYNASTY EXPLORATIONS  
LTD.

---

DYN GROUP  
NTS: 1051 - 11

---

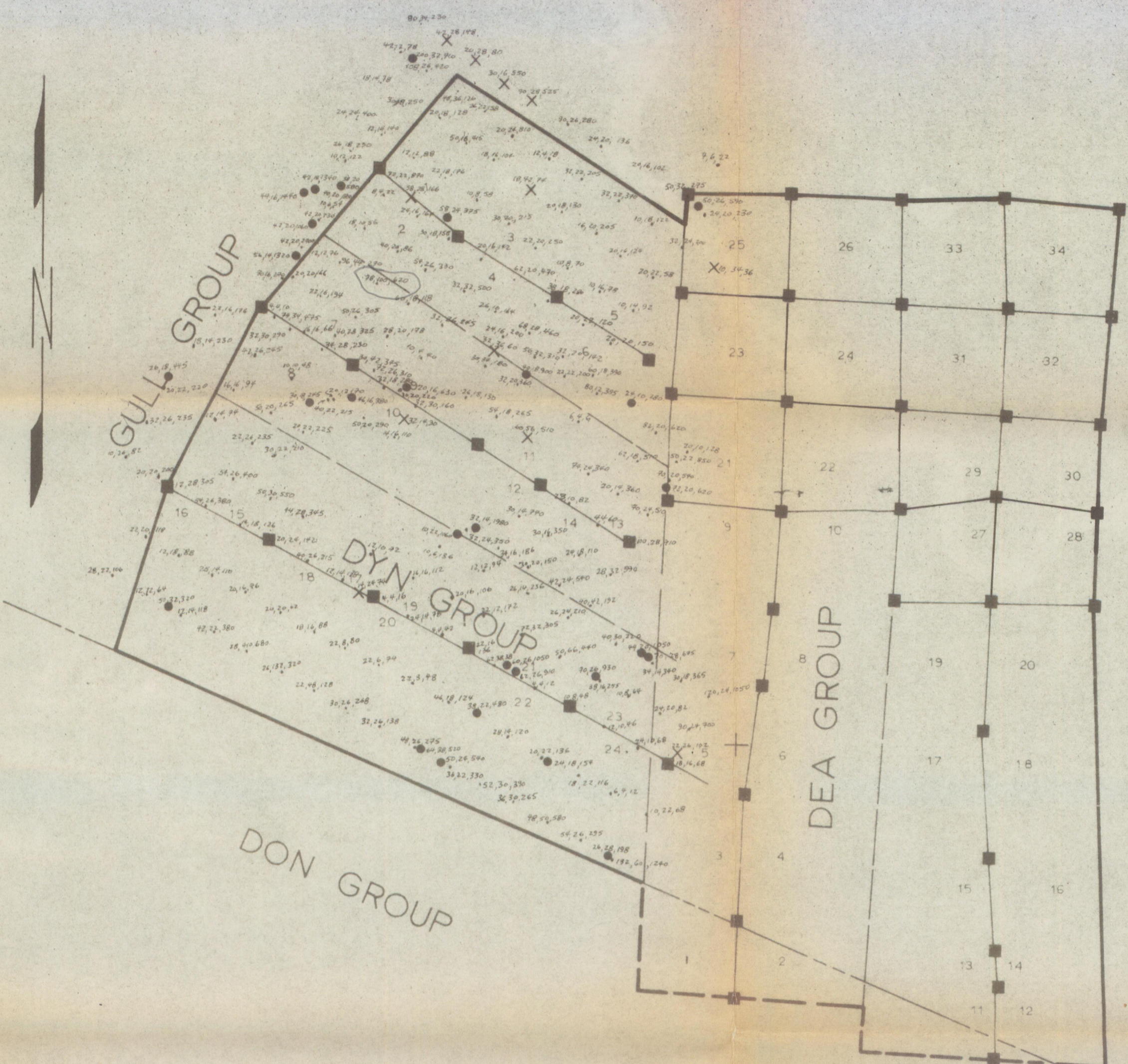
GEOCHEMISTRY

---

Scale: 1 in. 1/4 mi.

MAP: 3

photo no: A 12343-355



COL GROUP

LEGEND

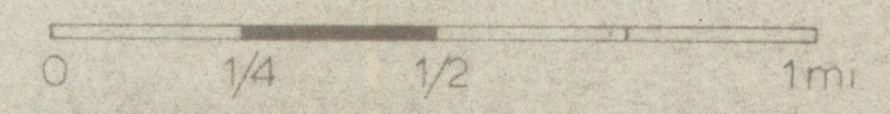
- claim post
  - claim name
  - claim line
  - claim boundary
  - x rock - sample type
  - silt
  - soil
  - other
- analysis in ppm: 122,25,457 =  
Cu, Pb, Zn

DYNASTY EXPLORATIONS LTD.

DYN GROUP  
NTS 1051-11

GEOCHEMISTRY

Scale 1 in 1/4mi



MAP: 4

photo no A 12343-355

PIT AA

PIT CC  
□

+ S3C471L

□ PIT BB

□  
PIT DD

Pits are approximately  
150' - 200' N, S, E & W  
of S3C471L.

Sample name: S3C471 ; type: L = soil  
R = rock

Analysis in ppm: 102, 51, 560 = Cu, Pb, Zn

Integrated metal value: 12

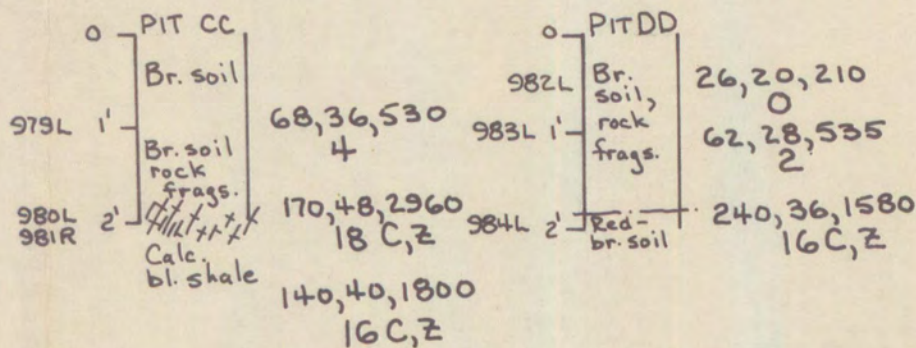
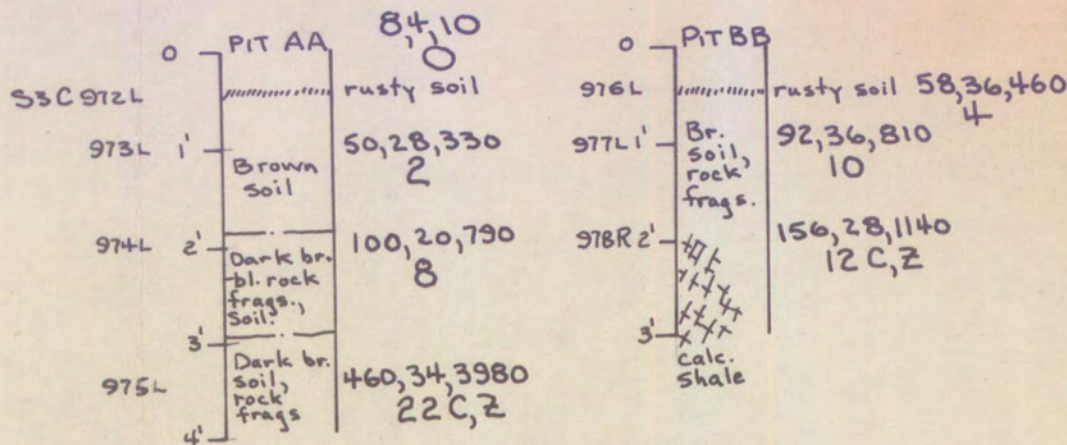
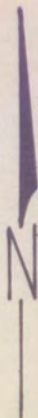
Metal characteristic: C = Cu, P = Pb, Z = Zn

# DYN GROUP

PITS IN VICINITY

S3C471L

## MAP: 5



scale: as shown