

GEOLOGICAL AND GEOCHEMICAL REPORT

PREVO CLAIM GROUP

Watson Lake Mining District  
Yukon Territory

Longitude : 129° 40' W.  
Latitude : 62° 37' N.

N.T.S. 105-I-12

Field Work covering the period  
June 15th to August 6th, 1973

Report and Interpretation  
October, 1973

By:

John D. Curry, P. Geol.

DYNASTY EXPLORATIONS LIMITED

October, 1973

TABLE OF CONTENTS

	<u>Page</u>
INTRODUCTION	
Location and Access .....	1
General .....	1
GEOCHEMISTRY	
General .....	4
Integrated Value.....	4
Reconnaissance Geochemistry .....	6
Detail Geochemistry .....	6
GEOLOGY	
Reconnaissance .....	7
SUMMARY .....	8
RECOMMENDATIONS .....	8
TABLE I List of Claims	(iii)
TABLE II Persons Involved in Work Program	(iii)
TABLE III Classification of Prevo Samples	(4)
TABLE IV Calculation of Integrated Value Metal Characteristic	(5)
TABLE V Geological Formations	(7)
APPENDIX I Summary of Costs	
APPENDIX II Affidavit Supporting Summary of Costs	
APPENDIX III Vouchers Supporting Summary of Costs	



TABLE I  
LIST OF CLAIMS

<u>Claim</u>	<u>Claim Number</u>	<u>Grant Number</u>	<u>Recording Date</u>
PREVO	1-42 inclusive	Y70635-Y70676	November 20, 1972

TABLE II  
PERSONS INVOLVED IN WORK PROGRAM

John D. Curry	B.Sc., P. Geol.	Apt. 904, 9909-104th St., Edmonton, Alberta.
Colin Godwin	B.A.Sc. P. Eng.	330-355 Burrard Street, Vancouver 1, B.C.
D. McCune	Geological Assistant	4021 W.13th Avenue, Vancouver, B.C.
G. May	Assistant	1379 W.58th Avenue, Vancouver 14, B.C.
L. Dellow	Assistant	1620 E.36th Avenue, Vancouver 15, B.C.
S. Morris	Cook	c/o Tom Stokie, P.O. Box 92, Fernie, B.C.

# DYNASTY EXPLORATIONS LIMITED

330 MARINE BUILDING  
355 BURRARD STREET  
VANCOUVER 1, B. C.

## GEOLOGICAL AND GEOCHEMICAL REPORT PREVO CLAIM GROUP

### INTRODUCTION

#### Location and Access

The Prevo Group is located approximately 105 miles east-northeast of Ross River, Y.T. (see Figure 1), on N.T.S. sheet 105-I-12 (see Figure 2). The property is at an elevation of approximately 5,500 feet and is 50 percent tree-covered.

Access to the property presently is by helicopter from one of the few lakes (i.e. Summit Lake, Cominco Lake) in the area that can be utilized by float planes. A winter road to within 20 miles of the property, originating at Tungsten, N.W.T., was used by Placer Development during the winter of 1972-73 and construction of an all-weather road between Tungsten and the Placer Howard's Pass property is likely.

#### General

Claims Prevo 1 to Prevo 42 inclusive were staked in October, 1972, in response to the Placer lead-zinc discoveries in the Howard's Pass area (see Table I - List of Claims).

Reconnaissance geochemical samples were collected over the 22 days from June 15th to July 6th, 1973 and the group was mapped on a scale of 1 inch to  $\frac{1}{4}$  mile. For the 7 days from August 1st to 6th, 1973, two grids were established for an approximate total of 10 line-miles. Geochemical soil and a few silt samples were collected on these grids but only moderately anomalous sections were encountered. Table II is a list of persons involved in the work program.

DYNASTY EXPLORATIONS

SELWYN PROJECT-1973

CLAIM GROUPS:

- A: Prevo
- B: Pas
- C: Gull and Dyn
- D: Dea
- E: Tam
- F: Joy and Ajax
- G: Tap
- H: Ms
- I: Sand
- J: Gun
- K: Kee

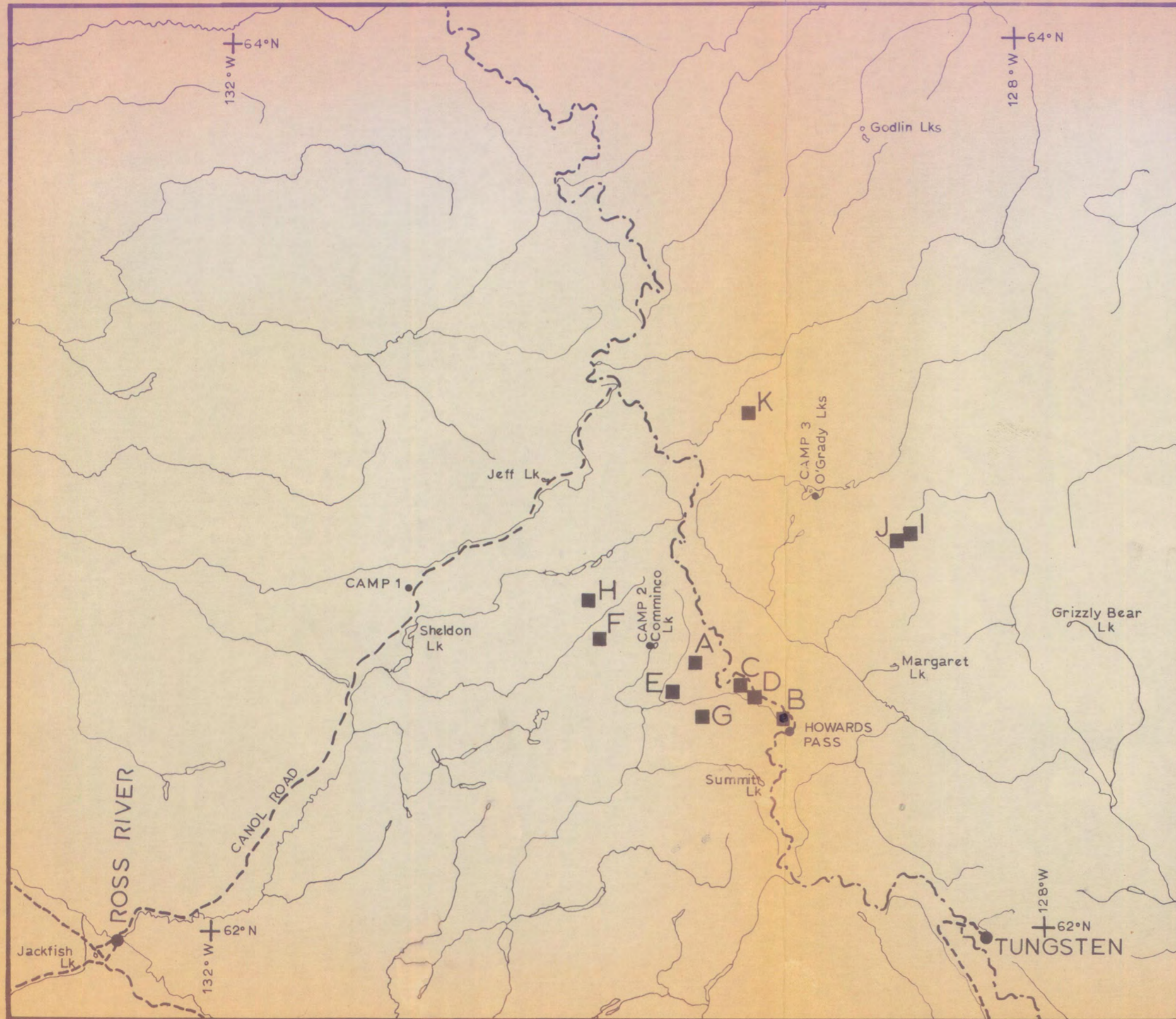
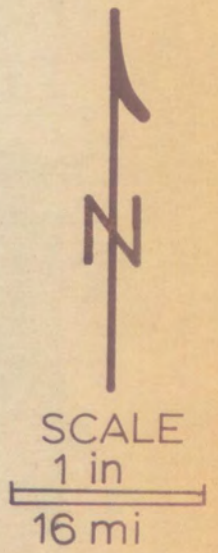
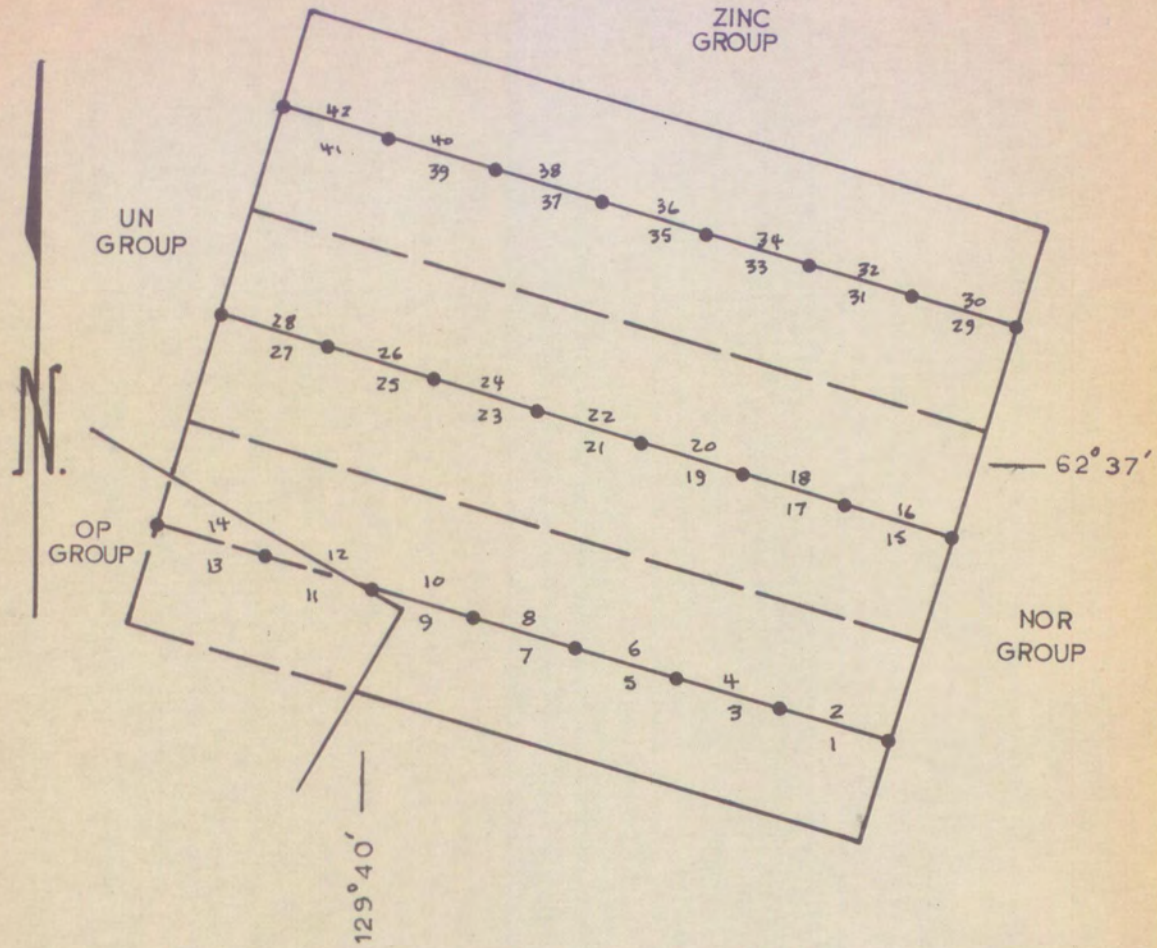


FIGURE 1:  
Index Map  
Claim Groups

# DYNASTY EXPLORATIONS LTD.



## PREVO GROUP claim sketch

scale: 1 in. = 1/2 mi.

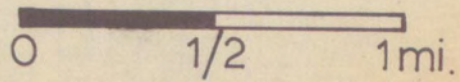


FIGURE: 2  
(N.T.S.: 105 I-12)

### LEGEND

- CLAIM LINE
- CLAIM POST
- $\frac{1}{2}$  CLAIM NAME

GEOCHEMISTRY

General

Table III classifies the type and number of samples taken on the Prevo Group. Analyses for copper, lead and zinc were performed by Acme Analytical Laboratories Ltd., 6455 Laurel Street, Burnaby 2, B.C. Analysis was by atomic absorption on perchloric acid digestion of a minus 80 mesh sample.

TABLE III: CLASSIFICATION OF PREVO SAMPLES

<u>Type</u>	<u>Approx. Area</u>	<u>Goechem: Cu, Pb, Zn.</u>		
		<u>Soil</u>	<u>Rock</u>	<u>Silt</u>
Regional	2.2 sq. miles	96	12	50
Detail A	1300 ft. x 5000 ft. 6.5 M. sq. ft. 6 line-miles	449	0	9
Detail B	2000 ft. x 2000 ft. 4 M. sq. ft. 4 line-miles	240	0	2
TOTALS		<u>785</u>	<u>12</u>	<u>61</u>

One sample from a rusty micaceous quartz vein in the north-central sector of Prevo 19 assayed only trace gold (Acme Analytical Laboratories Ltd., 6455 Laurel Street, Burnaby 2, B.C.).

Integrated Value

An even number called here the integrated value for copper, lead and zinc is plotted at each sample site with a letter (C for copper, P for lead and Z for zinc) that defines the abundant metal(s) or metal characteristic(s) at the site.

Table IV shows how to calculate an integrated metal value for a site. The purpose of this scheme is to provide a summary map that will ensure that no anomalies from a single or additive geochemical result are lost. Zoning of metals should become apparent from progressions in metal characteristics.

TABLE IV: CALCULATION OF INTEGRATED VALUE AND METAL CHARACTERISTIC

A geochemical interpretation scheme for a total value representing copper + lead + zinc with pH taken into account.

RANGE (PPM) AND COLOUR

<u>Metal</u>	<u>Red (925)</u>	<u>Green (909)</u>	<u>Blue (903)</u>
Copper	$\geq 120$	90 - 119	70 - 89
Lead	$\geq 50$	40 - 49	30 - 39
Zinc	$\geq 1000$	600 - 999	300 - 599
Value	6	4	2

Notes:

(a) Adjustment for pH

if  $\text{pH} \leq 5.0$ :

Copper, multiply ppm by 2  
 Lead, do not change  
 Zinc, multiply ppm by 5

(b) Bonus for High Results

<u>Bonus</u>	<u>Copper</u>	<u>Lead</u>	<u>Zinc</u>
2	240-359	100-149	2000-2999
4	360-479	150-199	3000-3999
6	$\geq 480$	$\geq 200$	$\geq 4000$

(c) Colour code for total value: Copper + Lead + Zinc

<u>Value</u>	<u>Colour</u>	<u>Interpretation</u>
$\geq 18$	Red (925)	High anomaly
12 to 16	Orange (918)	Intermediate anomaly
8 & 10	Green (909)	Low anomaly
6	Blue (903)	High threshold
4	Purple (931)	Low threshold
2 & 0	Blank	Background

(d) Metal character noted for copper, lead and zinc by: C, P, Z, respectively, only if value for each metal is  $\geq 6$ .

### Reconnaissance Geochemistry

Map 1 is a blow-up print of air photo A12281-62 on a scale of 1 inch to  $\frac{1}{4}$  mile. Map 3 is a print of an overlay of Map 1. Sample locations for all reconnaissance samples are shown with sample name, type, pH (where applicable) and an integrated metal value for copper, lead and zinc. Map 4 is a print of an overlay for Map 1 and shows copper, lead and zinc values for reconnaissance geochemistry results. Moderately interesting results were obtained in the extreme southeast part of the group (see: Map 1, Grid A: Maps 5 to 8) and the extreme northwest sector of the group (see: Map 1, Grid B: Maps 9 to 12).

### Detail Geochemistry

Map 5 shows contoured integrated metal values for the A grid. Maps 6, 7 and 8 show the contoured results for copper, lead and zinc respectively on the A grid. Zinc is the principal anomalous element on this grid (up to 3600 ppm) with important amounts of lead (up to 210 ppm) and minor copper (up to 170 ppm).

Map 9 shows contoured metal values for the B grid. Maps 10, 11 and 12 show the contoured results for copper, lead and zinc respectively for the same area. Again, zinc is the most important anomalous element on the B grid (up to 6200 ppm), with copper (up to 162 ppm) and lead (up to 110 ppm) contributing only in a minor way to the anomalies.

While both grids contain anomalous sections, there are no obvious strong targets.

GEOLOGY

Reconnaissance Geology

Map 2 is a print of an overlay for Map 1 and shows the general geology of the Prevo Group. Table V illustrates geological formations on the group. 'Wavy-bedded' limestone consisting of grey to brown-weathering dolomitic rock with grey-weathering limestone pebbles and bands is the lowest member of the sequence outcropping on the Prevo group. Grey weathering black shales, seen mainly in talus or float, overlie the carbonate rocks. No 'transitional rock' of the type seen in the Howard's Pass region was noted. The shale is overlain by buff-weathering, pyrite-rich, sometimes dolomitic and/or calcareous argillite. Black shales overlie the argillite which in turn grades into a sequence of interbedded chert-pebble conglomerate, chert greywacke and black shale.

A west-northwesterly trending anticline traverses the southern portion of the group while the northern sector is traversed by a synclinal structure (see: Map 2: Section AA'). Plunges on the fold appear to be shallow to the east-southeast.

There is only very minor outcrop in the detail areas and no detail geological mapping was done.

TABLE V: GEOLOGICAL FORMATIONS

	8	Chert pebble conglomerate, chert greywacke, minor black shale
	6	Black (calcareous) shale
	5	Buff to orange weathering argillite with black streaks, sometimes dolomitic and calcareous; disseminated pyrite, pyrite blebs
	4	Black shale, party calcareous; cherty shale; some pyrite
	2	Transitional rock; thinly laminated buff and black weathering dolomitic rock
	1	Wavy-bedded limestone; transitional rock plus grey limestone pebbles, bands.

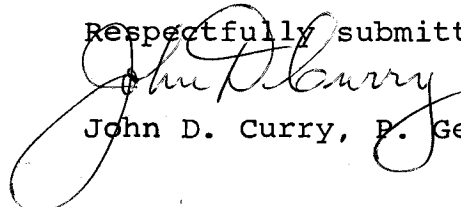
SUMMARY

Moderately anomalous zinc, lead and copper values were obtained from soils and silts in the extreme southeasterly and extreme northwesterly sectors of the Prevo Group. Detail grids A and B did not effectively define strong targets, although anomalous areas were outlined. Geologically, the Prevo Group is similar to the Howard's Pass area where lead-zinc mineralization occurs in black calcareous shale and siliceous mudstone overlying carbonate rocks which are similar to Unit 1. This shale at Howard's Pass is in turn overlain by dolomitic argillite similar to Unit 5 on the Prevo claims. Unit 4, therefore, would appear to be a favourable host for lead-zinc mineralization and it should be noted that both detail grids A and B are underlain chiefly by this unit.

RECOMMENDATIONS

No strong targets have emerged from work conducted on the Prevo Group to date. The fact that there is a comparable geological section between Howard's Pass and the Prevo Group is encouraging. Sufficient work has been done in order to hold the claims at least until November 20th, 1974. No further work is recommended at this time, although the geology of the region may be better understood in the near future and additional work might then be considered.

Respectfully submitted,



John D. Curry, P. Geol.

October, 1973

DYNASTY EXPLORATIONS LIMITED  
SUMMARY OF COSTS  
TO OCTOBER 31, 1973  
PREVO CLAIM GROUP

	<u>Schedule</u> <u>No.</u>	<u>Wages</u>	<u>Expenditures</u>	<u>Total</u>
Geology	"B"	\$ 2,135.60	\$	
Geochemistry	"C"	1,013.53		
Assays	"C"		1,413.96	
Camp	"D"	72.26	1,275.28	
Miscellaneous freight and transportation	"E"		328.00	
Rotary Wing	"E"		1,542.29	
Fixed Wing	"E"		<u>305.85</u>	
	Note (1)	\$ 3,221.39	\$ 4,865.38	\$8,086.77
District Expense	6%			<u>485.20</u>
				\$8,571.97
Administration	10%			<u>857.20</u>
				<u>\$9,429.17</u>
				TOTAL

Note: (1) Receipts attached for all expenditures over \$200.00; Receipts for lesser amounts provided upon request.

# DYNASTY EXPLORATIONS LIMITED

330 MARINE BUILDING  
355 BURRARD STREET  
VANCOUVER 1, B. C.

## AFFIDAVIT SUPPORTING SUMMARY OF COSTS

I, COLIN GODWIN, Geologist, Dynasty Explorations Limited, of Vancouver, British Columbia, do hereby state that, to the best of my knowledge and belief, the statement of costs presented in this report (Geological and Geochemical Report - Prevo Group) is both correct and true.

\_\_\_\_\_  
Colin Godwin

\_\_\_\_\_  
Date

\_\_\_\_\_  
A Notary Public for  
British Columbia.

DYNASTY INDUSTRIES LIMITED  
 PREVIOUS CLAIM COST SUMMARY  
 TO OCTOBER 31, 1973

Schedule "A"

	SCHEDULE No.	WAGES	EXPENDITURES	TOTAL
GEOLOGY	" B "	213560		
GEOCHEM	" C "	101353		
ASSAYS	" C "		141396	
CAMP	" D "	7226	127528	
MISC FREIGHT & TRANSPORTATION	" E "		32800	
ROTARY WING	" E "		154229	
FIXED WING	" E "		30585	
		<hr/>	<hr/>	<hr/>
	NOTE (1)	322139	486538	808677
DISTRICT 6%				48520
				<hr/>
				857197
ADMINISTRATION 10%				85720
				<hr/>
TOTAL				<u>942917</u>

NOTE: (1) RECEIPTS ATTACHED FOR ALL EXPENDITURES OVER  
 \$200.00; RECEIPTS FOR LESSOR AMOUNTS  
 PROVIDED UPON REQUEST.

138-06

NAME . . . . . *Provo - Geology*

CARD NO.

Schedule B

DATE	φ	REFERENCE NO.	DEBIT	CREDIT	BALANCE	PROOF
JUL 73	0	11	1 6 4.3 8		1 6 4.3 8	3 0 2.4 4
31 AUG 73	0	11	4 0 9.7 5	<i>wages</i>	5 7 4.1 3	7 1 2.1 9
SEP 73	0	23	4 2.9 0		6 1 7.0 3	7 5 5.0 9
31 OCT 73	0	11	1 0 5 5.3 3		1 6 7 2.3 6	1 8 1 0.4 2
31 OCT 73	0	16	1 5 7.1 0		1 8 2 9.4 6	1 9 6 7.5 2
		From B,	3 0 6.1 4		<u>2,135.60</u>	

ALLOWABLE EXPENDITURES 2,135.60

WAGES FROM "F" 2,135.60 TO "A"

138-01

NAME . PREVO - ROBERT ALAN (geology + geochem.)

CARD NO.

Schedule B<sub>1</sub>

DATE	φ	REFERENCE NO.	DEBIT	CREDIT	BALANCE	PROOF
30 JUN 73	0	11	61228	WAGES	61228	75029

WAGES GEOLOGY  
WAGES GEOCHEM

306.14 To "B"  
306.14 To "C"  
61228

138-08

NAME . . . . . *Prou - Cachem*

CARD NO.

Schedule "C"

DATE	Ø	REFERENCE NO.	DEBIT	CREDIT	BALANCE	PROOF
JUL 73	Ø	1 1	2 5 8.3 2		2 5 8.3 2	3 9 6.4 0
31 AUG 73	Ø	1 1	4 4 9.0 7	wages	7 0 7.3 9	8 4 5.4 7
31 AUG 73	Ø	1 9.1 3	3.0 0	assays	7 1 0.3 9	8 4 8.4 7
31 OCT 73	Ø	2 3	1.4 1 0.9 6	wages	2.1 2 1.3 5	2.2 5 9.4 3
		From B <sub>1</sub>	3 0 6.1 4	wages	2,427.49	

LESS STAKING COSTS NIL

ALLOWABLE EXPENDITURES 2,427.49

WAGES	FROM "F"		1013.53	TO "A"
ASSAYS	FROM "C <sub>1</sub> "	1410.96		
		<u>3.00</u>	<u>1413.96</u>	TO "A"
			<u>2427.49</u>	

DYNASTY EXPLORATIONS LIMITED  
 DISTRIBUTION OF GEOCHEM AND ASSAY COST  
 ON SAMPLE COUNT BASIS

Schedule "C" <sup>11</sup>

CLAIM NAME	ACCT No.	Soil+Silt		Rock		ASSAYS	COST	
		Cu Pb Zn		Cu Pb Zn			Soil+Silt.	Rock + ASSAYS
MS	131-08	501		25			81162	6550
TAP	132-08	577		44			93474	11528
PAS	133-08	1019		101	2 WHSE } Ag Pb Zn 1 ACME }		165078	2300 26462
SAND	134-08	403		33			65286	8646
GUN	135-08	—		—			—	
KEE	137-08	—		—			—	
PREVO	138-08	846		12	1 WHSE Au		137052	3144 900
GULL	139-08	635		3			102870	786
DYN	140-08	227		14			36774	3668
DEA	142-08	375		32			60750	8384
TAM	143-08	487		330			78894	86460
JOY/ASAX	144-08	1225		47	17 ACME "V"		198450	12314 2800
		6245		641			1019790	174542

CHARGEZ

Soil + Silt.

1st ALLOCATION 125  
 2nd " 30  
 3rd " 30

LESS 12 1/2 %

Rock

cost from above 162  
 Add sample prep. 100

137052  
 3144  
 900  
 141096

To "C"

262

138-21

NAME Provo - Camp

CARD NO.

Schedule "D"

DATE	φ	REFERENCE NO.	DEBIT	CREDIT	BALANCE	PROOF
JUL 73	0	1 1	3 6.1 3		3 6.1 3	1 7 4.3 4
31 AUG 73	0	1 1	3 6.1 3		7 2.2 6	2 1 0.4 7
31 OCT 73	0	Expenses 2 0.3 7	2 7 6		7 5 0 2	2 1 3.2 3
31 OCT 73	0	2 2 FROM D	1 2 7 2.5 2		1 3 4 7.5 4	1 4 8 5.7 5

LESS STAKING COSTS

NIL

ALLOWABLE EXPENSES

1,347.54

WAGES

FROM "F"

72.26

EXPENDITURES

1,275.28

1,347.54

# DYNASTY EXPLORATIONS LIMITED

## ALLOCATION OF CAMP AND FIELD SUPPLIES ON A MAN DAY BASE

Schedule D<sup>1</sup>

PROJECT NAME & NO.	MAN DAYS										CAMP + FIELD SUPPLIES			
	S	F	M	A	M	T	T	A	S	O		TOTAL		
MS 131 ST										5.0		50	8484	
MS 131 OT										9.0	80	1.0	18.0	30541
TAP 132 ST										3.0			3.0	5090
TAP 132 OT										14.0	8.0	3.0	25.0	42418
PAS 133 ST														
PAS 133 OT						3				22.0	4.0	3.0	69.0	117072
SAND 134 ST										3.0	2		5.0	8484
SAND 134 OT										9.0	28		37.0	62778
GUN 135 ST											1		1.0	1697
GUN 135 OT											1		1.0	1697
KEE 137 ST											5		5.0	8484
KEE 137 OT														
PREVO 138 ST														
PREVO 138 OT						3	15	14.0	27.0			16.0	75.0	127252
GULL 139 ST														
GULL 139 OT						3	11	27.0	11.0			24.0	76.0	128949
DYN 140 ST														
DYN 140 OT						3	14	20.0	5.0			3.0	45.0	76352
OEX 141 OT	3	5	5.5	12	18.5	219.5	111.0	138.0	23.5				589.5	1000153
DEA 142 ST														
DEA 142 OT						3	14	21.0	5.0			4.0	47.0	79745
TAM 143 ST														
TAM 143 OT						3		31.0	14.0				48.0	81442
J/A 144 ST														
J/A 144 OT									2.0	5.0	5.1	2.0	60.0	101802
PROKATABLZ						9.5								
	3	5	5.5	12	18.5	383.5	279.0	274.0	111.5			56.0	1109.5	
Run hours camp work.						9.5								
	3	5	5.5	12	18.5	383.5	279.0	274.0	111.5			56.0	1109.5	1882440

To "D"

FACTOR = 16.967 / MAN DAY

18,824.40  
1109.5

NAME *Pcevs - Freight & Transp*

CARD NO.

Schedule "E"

DATE	φ	REFERENCE NO.	DEBIT	CREDIT	BALANCE	PROOF
25 JUL 73	0	TAMM 18.13				
31 AUG 73	0	18.92				
19 SEP 73	0	19.49				
25 SEP 73	0	19.72				
25 SEP 73	0	<i>R. Phillips</i> 19.73				
31 OCT 73	0	17 FROM "E <sub>1</sub> "				
31 OCT 73	0	18 FROM "E <sub>3</sub> "				
31 OCT 73	0	19 FROM "E <sub>1</sub> "				
31 OCT 73	0	20 FROM "E <sub>2</sub> "				
31 OCT 73	0	21 FROM "E <sub>2</sub> "				

LESS STAKING COSTS

NIL

ALLOWABLE EXPENDITURES

2,176.14

MISC FREIGHT + TRANSPORTION

328.00

ROTARY WING

1542.29

FIXED WING

305.85

2176.14

DYNASTY EXPLORATIONS LIMITED  
 ALLOCATION OF MISC. TRANSPORTATION  
 OF MEN + SUPPLIES  
 ON MAN DAY BASIS

Schedule "E."

PROJECT NAME & NO.	MAN DAYS										ALLOCATION					
	S	F	M	A	M	J	J	A	S	O	TOTAL	\$				
MS 131 ST										5.0	5.0	17.20				
MS 131 OT										9.0	8.0	1.0	18.0	61.92		
TAP 132 ST										3.0		3.0	10.32			
TAP 132 OT										14.0	8.0	3.0	25.0	86.00		
PAS 133 ST																
PAS 133 OT										3	22.0	4.0	3.0	69.0	237.36	
SAND 134 ST											3.0	2	5.0	17.20		
SAND 134 OT											9.0	28	37.0	127.28		
GUN 135 ST												1	1.0	3.44		
GUN 135 OT												1	1.0	3.44		
KEE 137 ST												5	5.0	17.20		
KEE 137 OT																
PREVO 138 ST																
PREVO 138 OT										3	15	14.0	27.0	16.0	75.0	258.00
GULL 139 ST																
GULL 139 OT										3	11	27.0	11.0	24.0	76.0	261.44
DYN 140 ST																
DYN 140 OT										3	14	20.0	5.0	3.0	45.0	154.80
OEX 141 OT	3	5	5.5	12	18.5	219.5	111.0	138.0	23.5					589.5	2028.68	
DEA 142 ST																
DEA 142 OT										3	14	21.0	5.0	4.0	47.0	161.68
TAM 143 ST																
TAM 143 OT										3		31.0	M.		48.0	165.12
J/A 144 ST																
J/A 144 OT											2.0	5.0	5.1	2.0	60.0	206.40
PRO RATABLZ										9.5						
	3	5	5.5	12	18.5	383.5	279.0	274.0	111.5	56.0						
Run hours camp work.										9.5						
	3	5	5.5	12	19.0	383.5	279.0	274.0	111.5	56.0	1109.5	E4	3817.48			

FACTOR  

$$= \frac{3,817.48}{1109.5} = 3.44 / \text{MAN DAY}$$

# DYNASTY EXPLORATIONS LIMITED

## ALLOCATION OF FIXED WING + ROTARY WING

CAMP SUPPORT TO PROPERTIES + REGIONAL EXPLORATION

ON MAN DAY BASE

Schedule E<sub>2</sub>

PROJECT NAME & NO.	MAN DAYS										FIXED WING # 20	ROTARY WING # 21		
	S	F	M	A	M	T	T	A	S	O	TOTAL			
MS 131 ST										5.0	5.0	2039	2313	
MS 131 OT										9.0 8.0	1.0 18.0	7340	8325	
TAP 132 ST										3.0	3.0	1223	1388	
TAP 132 OT										14.0 8.0	3.0 25.0	10195	11562	
PAS 133 ST														
PAS 133 OT						3				22.0 4.0	3.0 69.0	28138	31912	
SAND 134 ST										3.0 2	5.0	2039	2313	
SAND 134 OT										9.0 28	37.0	15089	17112	
GUN 135 ST											1	408	463	
GUN 135 OT											1	408	462	
KEE 137 ST											5	5.0	2039	2313
KEE 137 OT														
PREVO 138 ST														
PREVO 138 OT						3	15			14.0 27.0	16.0 75.0	30585	34688	
GULL 139 ST														
GULL 139 OT						3	11			27.0 11.0	24.0 76.0	30993	35150	
DYN 140 ST														
DYN 140 OT						3	14			20.0 5.0	3.0 45.0	18351	20812	
OEX 141 OT	3	5	5.5	12	18.5	219.5	111.0	138.0	23.5		589.5	2404.29	272596	
DEA 142 ST														
DEA 142 OT						3	14			21.0 5.0	4.0 47.0	19167	21737	
TAM 143 ST														
TAM 143 OT						3				31.0 14.0	48.0	19574	22200	
J/A 144 ST														
J/A 144 OT										2.0 5.0 5.1	2.0 60.0	24468	27750	
PROGRATABLZ						95								
	3	5	5.5	12	18.5	383.5	279.0	374.0	111.5	56.0				
Run hours camp cost.						95						E4	E4	
	3	5	5.5	12	18.5	383.5	279.0	374.0	111.5	56.0	1109.5	452485	513096	
FACTOR	\$ ÷ TOTAL MAN DAYS										4.078	4.625		

To E<sup>1</sup>

DYNASTY EXPLORATIONS LIMITED  
 SELWYN PROJECT FUEL ALLOCATION  
 BASED ON HOURS FLOWN

Schedule "E3"

PROJECT/PROPERTY	#	BASE		COST ALLOCATION			
		STAKING	INDIRECT/DIRECT	STAKING	INDIRECT	DIRECT	
M.S.	131-22	13	9.1	43.91		307.34	
TAP	132-22	30	7.3	101.32		246.55	
PBS	133 ✓	3	11.6	10.13		391.78	
SAND	134 ✓	1.7	14.6	57.42		493.10	
GUN	135 ✓	98		330.98			
KEE	137 ✓	49		165.49		T.E.	
PREVO	138 ✓		7.3			246.55	
GULL	139 ✓		11.9			401.91	
DYN	140 ✓		6.3			212.78	
SELWYN IND	141 ✓		28.5		962.56		
SELWYN DIRECT	141 ✓		208.8			7052.17	
DEA	142 ✓		4.5			151.98	
TAM	143 ✓		17.5			591.04	
JOY/ATAX	144 ✓		12.9			435.68	
		210	28.5	311.8	709.25	962.56	10530.89
		361.3					
						12202.69	

FACTOR =  $12,202.69 \div 361.3 = \$33.774 / \text{hr}$

Cost of fuel to be allocated.

Basic fuel cost less drum returns E4 \$689.94  
 Fixed wing transportation cost. E4 6,512.75

12,202.69  
 \$1.845 per gal

Don  
 Hcy

NAME Selwyn- Frt + Transp

Schedule # E4

ROTARY WING      FIXED WING

MISC F+T	CAMP SERVICE	OFF PROP. EXPLORATION	CAMP SERVICE	FUEL	FUEL
3817.48	2,494.81 2,636.15	36,283.79 (9,124.45)	4,524.85	6,512.75	5,539.69 150.25
3,817.48	5,130.96	27,159.34	4,524.85	6,512.75	5,689.94

DATE	Ø	REFERENCE NO.	DEBIT	CREDIT
			59,173.37	
1 OCT 73	0	17	2636.15	R wing
1 OCT 73	0	17	150.25	fuel
1 OCT 73	0	17		9.124.45
1 OCT 73	0	18	962.56	<del>52,533.32</del>
1 OCT 73	0	18	7,052.17	
1 OCT 73	0	18		
1 OCT 73	0	18		12202.69
1 OCT 73	0	19	2028.68	
1 OCT 73	0	19		3817.48
1 OCT 73	0	20	2404.29	
1 OCT 73	0	20		4524.85
1 OCT 73	0	21	2725.96	
1 OCT 73	0	21		5130.96
1 OCT 73	0	5	9.80	

E1	E2	E2	E3	E3

NAME Selwyn - Fr + Transp.

DATE	φ	REFERENCE NO.	DEBIT	CREDIT	MISC F&T	ROTARY WING		FIXED WING		FUEL
						CAMP SERVICE	OFF PROP. EXPLORATION	CAMP SERVICE	FUEL	
				61,659.72	2,318.90	550.68	32,547.00	3,090.10	5,648.27	7,064.5
5 SEP 73	0	C. GODWIN 4-8-4	512.00	expenses	51.20					
5 SEP 73	0	R Morris 4-8-4	34.00	Transportation	34.00					
5 SEP 73	0	S. Morris 19.7.3	34.00		34.00					
5 SEP 73	0	Y. Ken Auto 19.7.5	5.00	hotel	5.00					
5 SEP 73	0	2 reverse from present		1144.018						
5 SEP 73	X 0	17	28.90		28.90					
0 SEP 73	0	Archie Truck 19.8.1	42.00	Rental drum head						42.00
0 SEP 73	0	TNTA 19.4.9	850.29	R. wing			850.29			
0 SEP 73	0	19.4.9	651.87	F wing				651.87		
0 SEP 73	0	White Pass 19.9.0	201.92	fuel						201.92
0 SEP 73	0	19.9.0	87.93	fuel						87.93
0 SEP 73	0	19.9.0	51.48	fuel						51.48
0 SEP 73	0	W. Thompson 19	269.60	Transportation & freight	269.60					
0 SEP 73	0	I. Dean 19.9.6	60.00	expenses	60.00					
0 SEP 73	0	19.5.6	84.00	accommodation	84.00					
0 SEP 73	0	White Pass 19.9.0	206.52	fuel						206.52
0 SEP 73	0	19.5.0	82.00							82.00
0 SEP 73	0	White Pass 19.5.0	56.00							56.00
0 SEP 73	0	19.5.0	127.00	dinner returned for credit						127.00
SEP 73	0	TNTA 19.4.9	1,944.13	R. wing	1,944.13					
SEP 73	0	19.4.9	1,283.06	F. wing				582.88	732.28	
SEP 73	0	19.4.9	3,475.50	R. wing			3,475.50			
SEP 73	0	19.4.9	100.00	F. wing				100.00		
SEP 73	0	19.4.9	27.20	fuel					27.20	
SEP 73	0	19.4.9	360.47	annual						
SEP 73	0	21	130.68	freight	130.68					
SEP 73	0	White Pass 21	1,421.17							1,421.17
SEP 73	0	Imperial Oil 24	420.00	drum credit						420.00
1 OCT 73	0	TNTA 19.4.9	1,434.80	fuel credit						1,434.80
1 OCT 73	0	20.4.4	0	R.W. credit						0
1 OCT 73	0	20.4.4	589.00				589.00			
1 OCT 73	0	YUKON FREIGHT 20.4.1	28.67	freight	28.67					
1 OCT 73	0	CANAL P. 20.2.5	140.18		140.18					
1 OCT 73	0	OS CURRY 20.4.3	413.05	accommodation	413.05					
1 OCT 73	0	20.4.3	27.00	+ misc expenses	27.00					
1 OCT 73	0	20.4.3	178.50		178.50					
1 OCT 73	0	OC GODWIN 20.4.8	4.00	expenses	4.00					
1 OCT 73	0	US PILE BURY 20.3.3	9.80		9.80					
1 OCT 73	0	TECH AIR 20.3.4	205.00	F. wing				100.00	105.00	
1 OCT 73	0	White Pass 19.5.0	167.00	fuel						167.00
1 OCT 73	0	2	360.47							
			59,173.37		3817.48	2,494.81	36,283.79	4,524.85	6,512.75	5,539.69

NAME Selwyn: Freight & Transp.

DATE	φ	REFERENCE NO.	DEBIT	CREDIT
			23,918.60	
26 JUL 73	0	Tear Air. 1 8.1 4	2 1 0.00	✓ F. wing
1 JUL 73	0	Peak Kin. 1 7.9 9	1 0.15	freight supplies
1 JUL 73	X 0	1 8.2 6	1 69.37	
1 JUL 73	0	Wanda Pass 1 8.1 7	2 4 2.40	✓ fuel
1 JUL 73	0	T.N.T.A. 1 8.1 3	3 1 4.66	✓ F. wing
1 JUL 73	0	SMITH TRAV. 1 6	4 1 5.00	✓ transportation
1 JUL 73	0	T.N.T.A. 1 8.1 3	6 6 5.25	✓ F. wing
1 JUL 73	0	NEW. NORTH 1 8.0 3	1 6.00	lodging
1 JUL 73	0	Wanda Pass 1 8.1 7	9 6 9.66	✓ fuel
1 JUL 73	0	1 8.1 7	9 6 9.66	✓ fuel
			1 4.00	
1 JUL 73	0	1 8.1 7	dum credit } 68.00	
1 JUL 73	0	1 8.1 7	} 1 69.00	
1 JUL 73	0	5	1 4.7 8 6.0 6	✓ account
1 AUG 73	0	Wanda Pass 1 8.5 4	5.00	freight on supplies
1 AUG 73	0	1 8.5 4	7.00	freight on supplies
1 AUG 73	0	1 8.5 4	1 0.05	
5 AUG 73	0	2	1 4.7 8 6.0 6	
1 AUG 73	0	Peak Kin 1 8.8 1	1 0.75	freight on supplies
1 AUG 73	0	1 8.8 1	9.77	
1 AUG 73	0	T.N.T.A. 1 8.9 2	ES 9.8 1 3.7 5	✓ R. wing
1 AUG 73	0	Tear Air 1 8.9 3	2 0 0.00	✓ F. wing
1 AUG 73	0	1 8.9 8	1 2.81	reg gas
1 AUG 73	0	Wanda Pass 1 9.0 0	8 5 4.3 4	✓ fuel
1 AUG 73	0	✓ 1 9.0 0	1 9 9.9 2	✓ fuel
1 AUG 73	0	✓ 1 9.0 0	1.4 2 1.1 7	✓ fuel
1 AUG 73	0	✓ 1 9.0 0	1 0 2.9 6	✓ fuel
1 AUG 73	0	T.N.T.A. 1 8.9 2	1.1 5 7.2 9	✓ F. wing
1 AUG 73	0	✓ 1 8.9 2	5 0 7.6 0	✓ R. wing
1 AUG 73	0	✓ 1 8.9 2	5 5 0.6 8	✓ R. wing
1 AUG 73	0	Chadman 1 9.0 9	1 1 1.6 5	expenses
1 AUG 73	0	5	1 0.4 4 0.1 8	
8 SEP 73	0	1.0 1	fuel 3 6 0.3 8	
8 SEP 73	0	Adams 1 9.3 3	1 5.3 5	expenses
7 SEP 73	0	T.N.T.A. 1 9.4 9	ES 1.1 5 3.2 5	✓ R. wing
7 SEP 73	0	1 9.4 9	ES 7.1 5 6.2 3	✓ R. wing
4 7 5.0 0				
8 2.0 0				
1 SEP 73	0	New North 1 9.5 6	1 0 4.0 0	Travel + accomodate
1 SEP 73	0	Smith 1 8.8 9	2 4 9.0 0	✓ Transportation
1 SEP 73	0	TEAR AIR 1 8.9 3	2 6 2 4.0 0	✓ F. wing
1 SEP 73	0	Wanda Pass 1 9.5 0	✓ 2 1 2.0 0	
1 SEP 73	0	1 9.5 0	dum ✓ 7 9.0 0	
1 SEP 73	0	1 9.5 0	credit ✓ 2 2 0.0 0	
1 SEP 73	0	1 9.5 0	✓ 9 0.0 0	

MISC F&T	ROTARY WING		FIXED WING		FUEL
	CAMP SERVICE	OFF PROP. EXPLORATION	CAMP SERVICE	FUEL	
1,173.00	-	14,423.77	721.67	2,314.55	5,285.6
			210.00		
10.15					
169.37					242.40
			183.83	130.83	
415.00					
			214.40	450.85	
16.00					
					96.96
					96.96
					<14.00
					<68.00
					<169.00
5.00					
7.00					
10.05					
10.75					
9.77					
		9,813.75			
			200.00		
12.81					854.34
					199.92
					1,421.17
					102.96
			279.60	851.09	<23.40
			507.60		
111.65	550.68				
					<360.38
15.35					
		1,153.25			
		7,156.23			
104.00					
249.00					
			823.00	1,801.00	
					(212.00)
					(79.00)
					(220.00)
					(90.00)
2,318.90	550.68	32,547.00	3,090.10	5,648.27	7,064.50

61,659.72

difference of 10,440.18 covered on next sheet.



DYNASTY EXPLORATIONS LTD.  
RE DISTRIBUTION OF ROTARY WIND INVOICES

FUEL 103  
MINT. 104  
105

INVOICE #	MS	TAP	PMS	SAND	GUN	KEE	PREVO	GULL	DYN	SERVICE	FORM	FUEL	DEA	TAM	J/A	BONNIE PLATA	
	131	132	133	134	135	137	138	139	140		141		142	143	144	145	
1009A-3 SHOULD BE LESS: RECORDED							637.00 (494.00)	273.00 (169.00)	247.00 (169.00)	1001.00	10946.00 (2,331.87)	(1813)	221.00 (143.00)				
981-3 SHOULD BE LESS: RECORDED										325.00	1753.00 (2,091.90)	11.90					
1343A-3 SHOULD BE LESS: RECORDED	1183.00 (1072.97)	819.00 (785.10)	949.00 (345.35)				169.00 (170.11)	344.00 (256.55)	273.00 (191.04)	1157.00	6,565.00 (9,813.75)	97.75	273.00 (193.66)	1170.00 (525.74)	728.00 (680.42)	6543 (6543)	544.57 (850.60)
2331-3 SHOULD BE LESS RECORDED				556.97						298.14	298.14						
1983A-3 SHOULD BE LESS RECORDED							142.86 (142.86)	520.14 (311.71)	299.00 (168.84)	702.00	5759.00 (7,156.23)	(14.00)	90.91 (90.91)	715.09 (649.39)			259.76 (259.76)
2582-3 SHOULD BE LESS RECORDED				293.20							293.20 (850.29)				263.89		
2690-3 SHOULD BE LESS RECORDED	30.38		182.28	303.78				60.75		577.14				60.75			
2442AB SHOULD BE LESS RECORDED										1944.11							
										520.00	2132.00 (3,475.50)	72.73		390.00	949.00 (955.26)	2054.00 (2,047.54)	
	169.00	390.00	39.00	64.57	(42.00)	(42.00)				2636.15							
							141.89	570.65	290.12		9124.49		157.34	1110.71	730.47		297.76
												150.25					

STIPULATIONS  
SERVICE  
OF PROPRY  
EXPLORATION  
ON PROPERTY

W  
%

PREVIOUS SALARIES AND WAGES SUMMARY  
 TO OCTOBER 31, 1973

Schedule "F"

NAME	GEOLOGY		GEOCHEM		CAMP.	
	D	\$	D	\$	D	\$
J. CURRY	18½	963,058½				37358
L. DELLOW			6			12097
C. GODWIN	8	572,071				5667
D. McCUNE	7	148,8711				232,75
G. MAY			6			12097
R. MORRIS	5	18450				
S. MORRIS					4	6452
<hr/>						
	38½		32½		4	
		186849		90494		6452
		224,21		10859		774
<hr/>						
		2,092,70		1,013,53		7226
<hr/>						
C. GODWIN BONUS		4290				
<hr/>						
		2,135,60		1,013,53		7226
<hr/>						
		To "B"		To "C"		To "D"

912281-62

DYNASTY EXPLORATIONS LTD.

PREVO GROUP

NTS: 105 H-12

Scale: 1 in. = 1/4 mi.



LEGEND

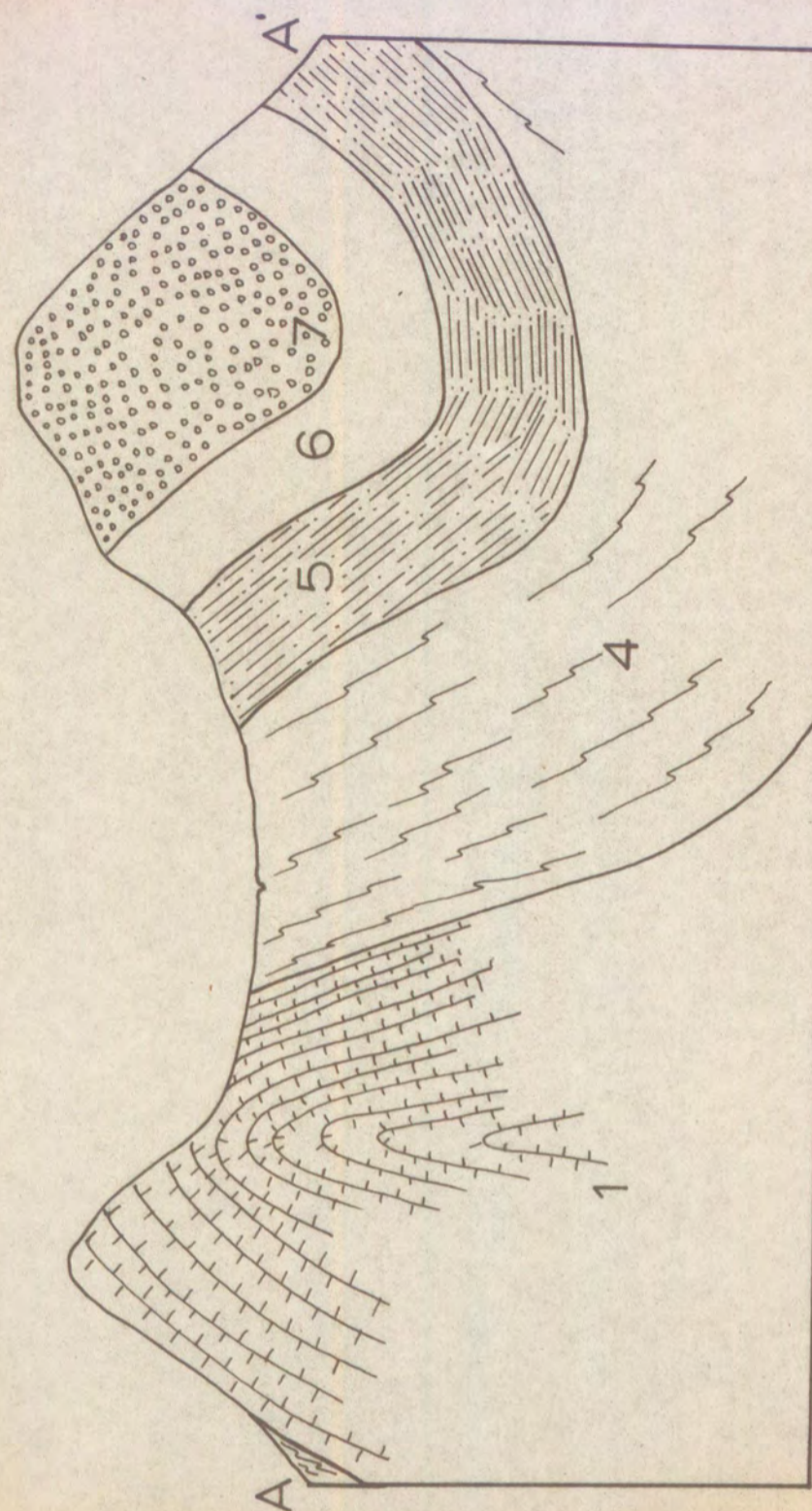
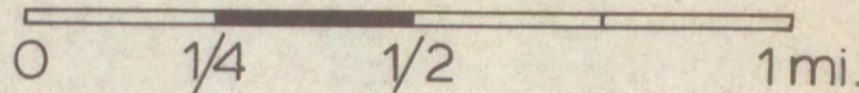
- Prevo claim posts
- claim line name
- claim boundary

MAP 1

DYNASTY EXPLORATIONS  
LTD.

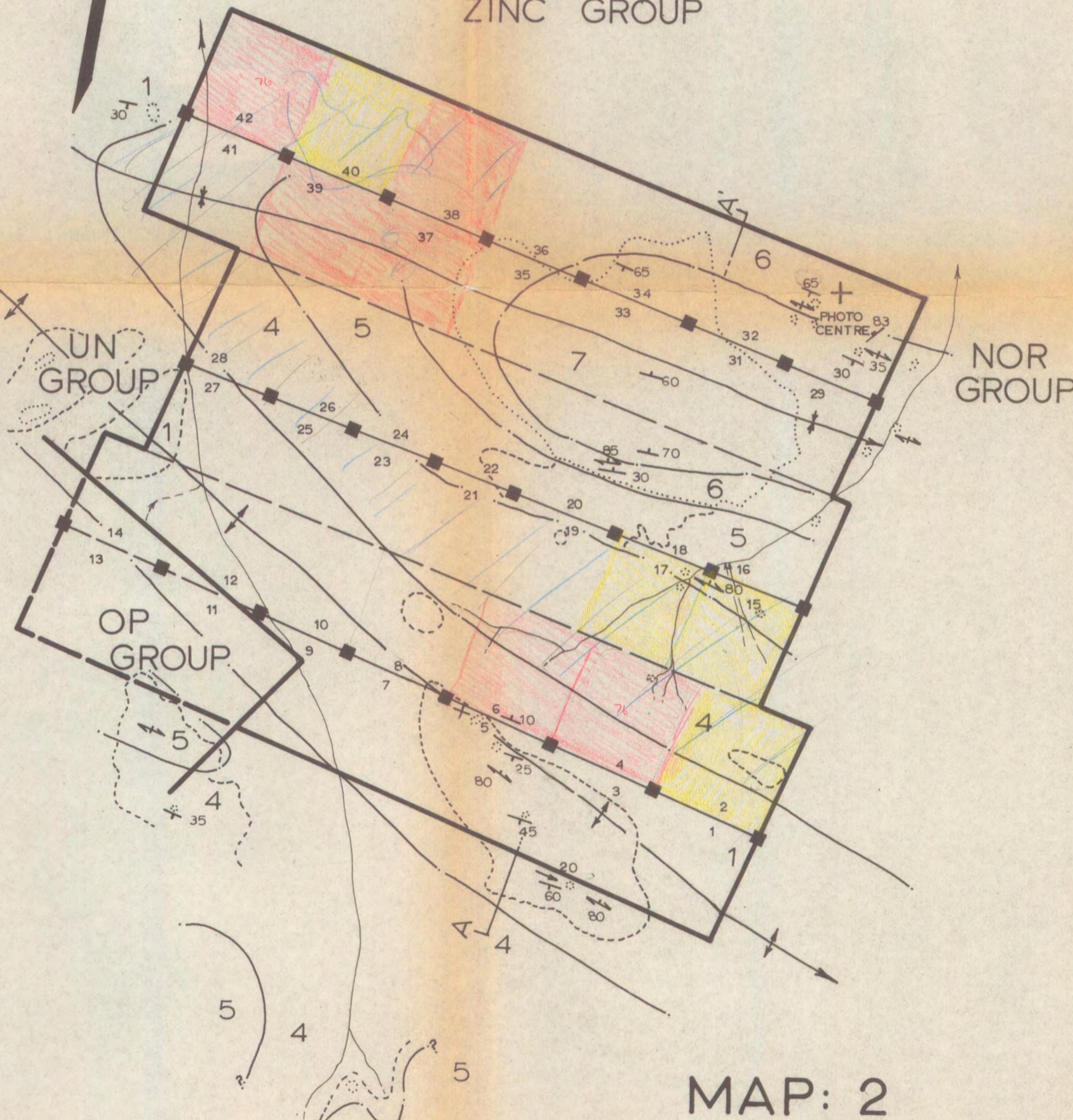
PREVO GROUP  
GEOLOGY

Scale: 1 in. = 1/4 mi.



SECTION AA'  
Approximate scale: 1" to 1300'

ZINC GROUP



LEGEND

- claim line, post, name
- bedding: vert., dipping, hor.
- axial cleavage: vert., dipping
- lination
- joint (AC): vert., dipping
- horizontal trace of anticline, syncline; plunging
- outcrop
- talus, float
- contact
- fault

GEOLOGICAL UNITS

- 8 chert pebble conglomerate, chert greywacke
- 6 black calcareous shale  
buff to orange weathering argillite  
with black streaks, sometimes dolomitic  
and calcareous; disseminated pyrite,  
pyrite blebs
- 5 black shale, partly calcareous; cherty  
shale; some pyrite
- 4 wavy-bedded limestone: transitional  
rock plus grey limestone pebbles, bands

MAP: 2

photo no.: A 12281-62 (N.T.S.: 1051-12)

geology by: John D. Curry

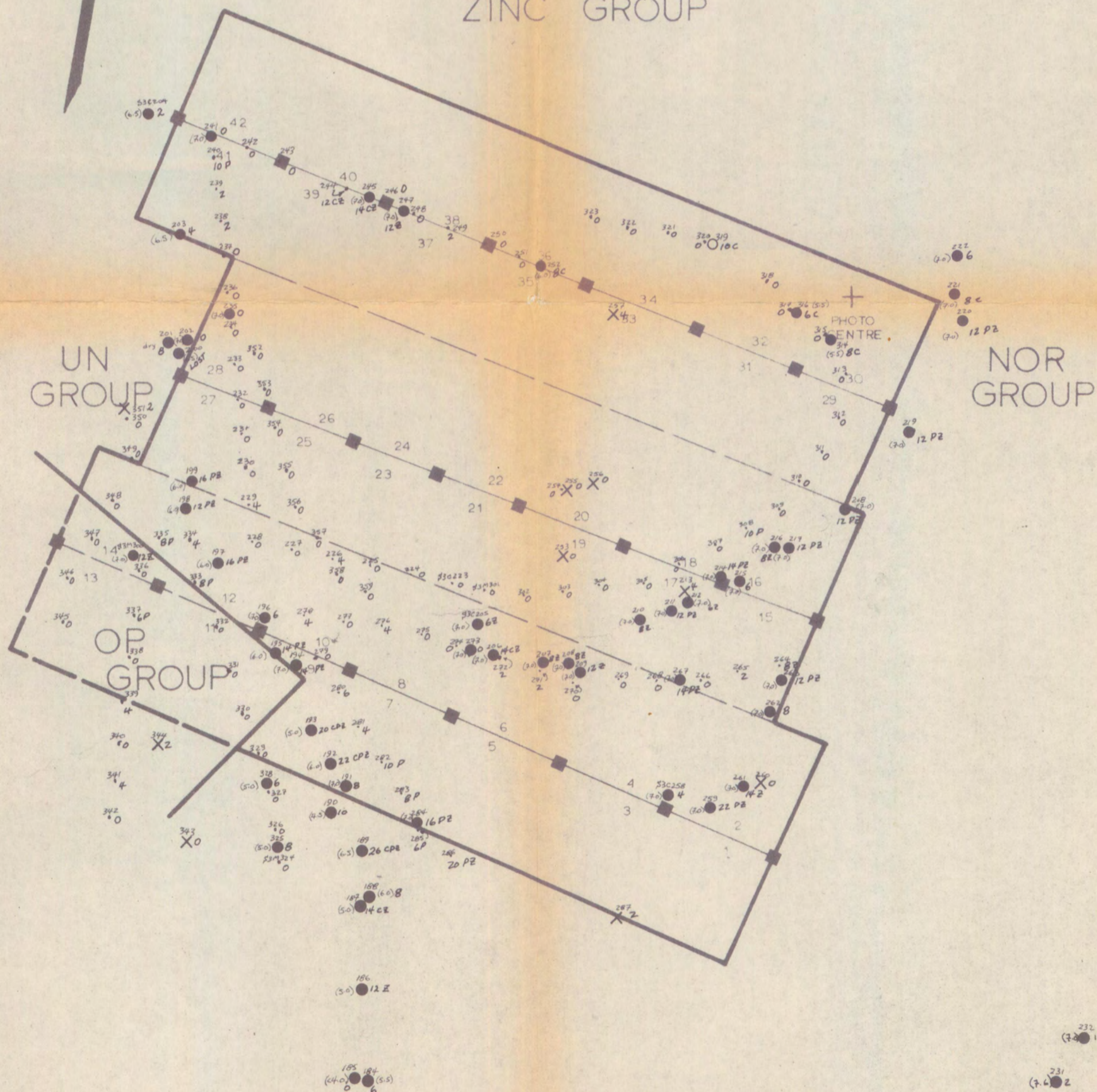
DYNASTY EXPLORATIONS  
LTD.

PREVO GROUP  
GEOCHEMISTRY

Scale 1 in = 1/4 mi.

0 1/4 1/2 1 mi.

ZINC GROUP



LEGEND

1-4 claim line, post, name

sample type: x rock

● silt

○ soil

○ other

sample name: S3C567

pH: (6.5)

integrated metal value: 12

metal character: C=Cu, P=Pb, Z=Zn

MAP: 3

photo no: A 12281-62 (N.T.S.: 1051-12)

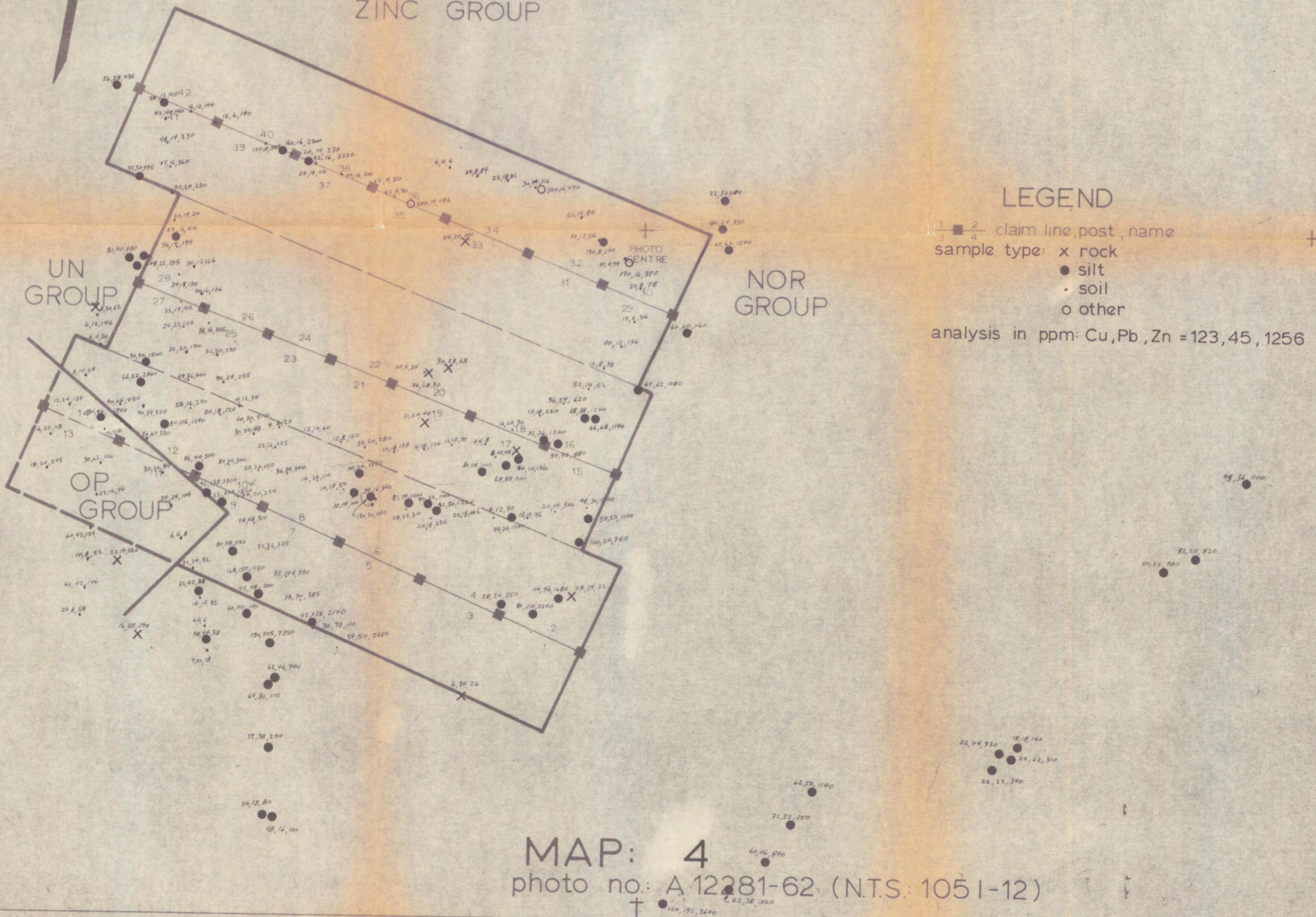
DYNASTY EXPLORATIONS  
LTD.

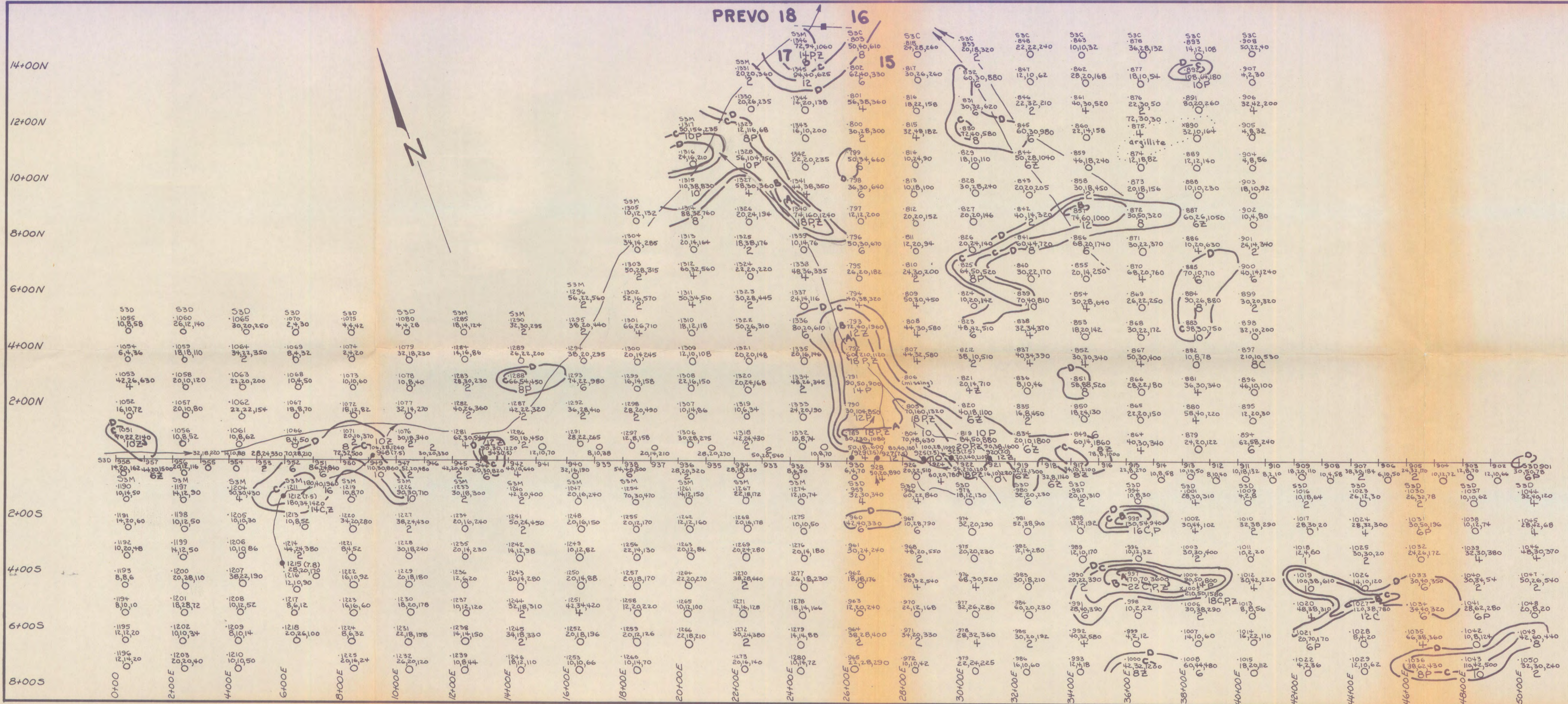
PREVO GROUP  
GEOCHEMISTRY

Scale 1 in. = 1/4 mi.

0 1/4 1/2 1 mi.

ZINC GROUP





**LEGEND**

$\frac{1}{2} - \frac{3}{4}$  claim line, post, name

SAMPLE TYPE: x rock  
 ● soil  
 ○ silt  
 ○ other

S3Y1600 Sample no.  
 15, 35, 300 Cu, Pb, Zn in ppm  
 12 C, P, Z integrated metal value  
 C-copper } metal  
 P-lead } characteristic  
 Z-zinc }

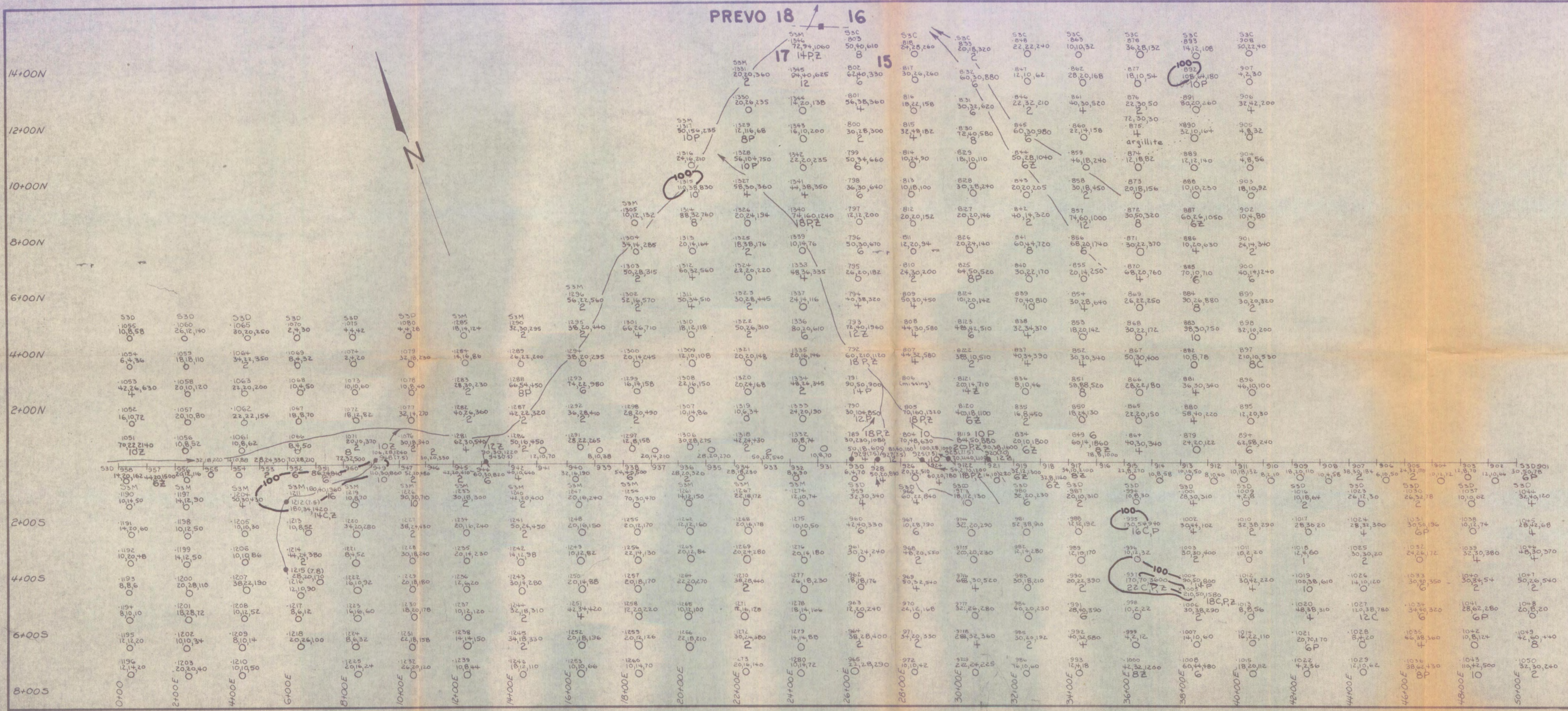
Contour value A —  $\geq 18$   
 B — 12 to 16 incl.  
 C — 8 & 10  
 D — 6  
 (7.0) pH

DYNASTY EXPLORATIONS LTD.

**PREVO GROUP**  
 A GRID GEOCHEMISTRY  
 NTS 105-1-12

Scale: 1" to 200'

INTEGRATED METAL VALUE CONTOURS



**LEGEND**

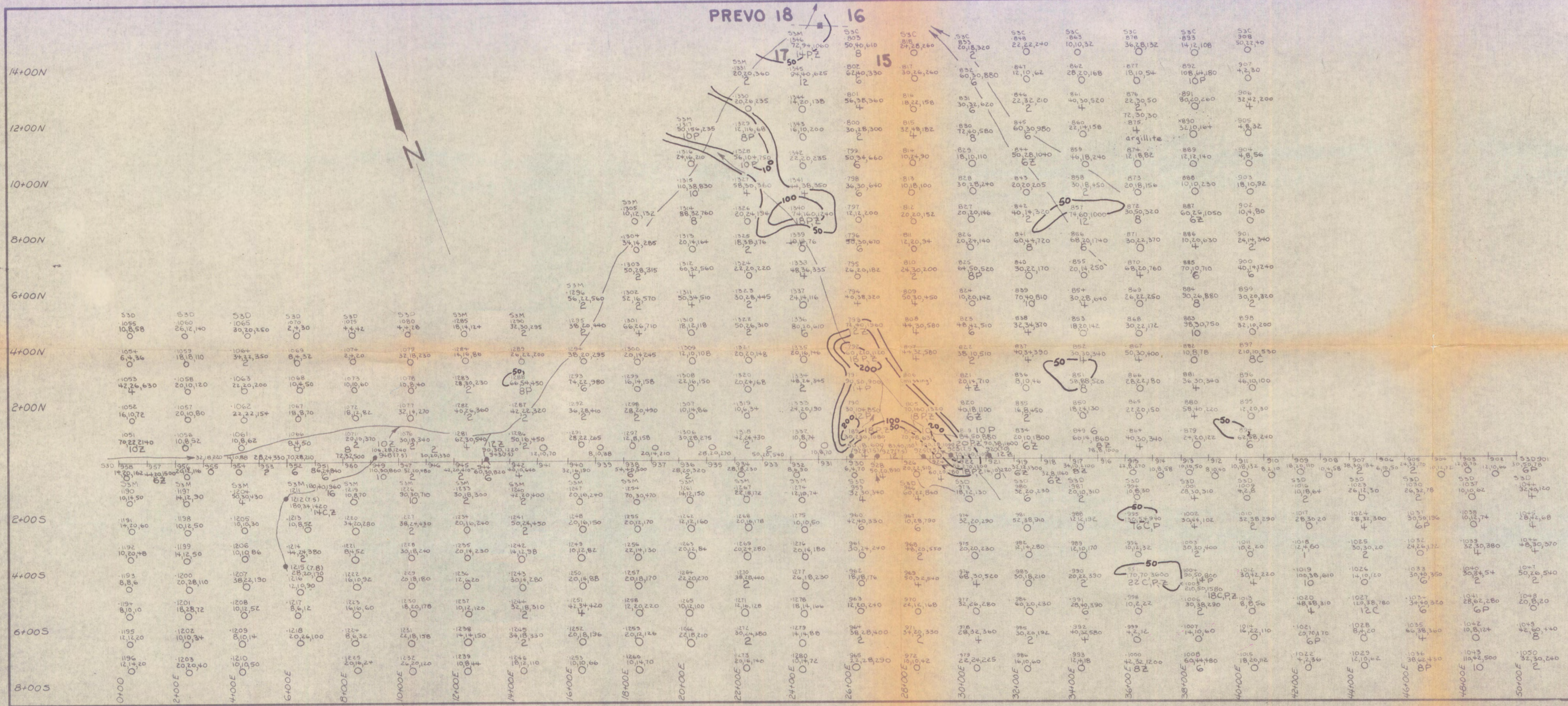
- $\frac{1}{2} - \frac{3}{4}$  claim line, post, name
- SAMPLE TYPE: x rock
- silt
- silt
- other
- S3Y1600 Sample no.
- 15, 35, 300 Cu, Pb, Zn in ppm
- 12 C, P, Z integrated metal value
- C-copper } metal
- P-lead } characteristic
- Z-zinc }
- Contour value A —  $\geq 18$
- B — 12 to 16 incl
- C — 8 & 10
- D — 6
- (7.0) pH

DYNASTY EXPLORATIONS LTD.

**PREVO GROUP**  
A GRID GEOCHEMISTRY

NTS 105-1-12

Scale 1" to 200'  
Cu CONTOURS (ppm)



**LEGEND**

$\frac{1}{2} \cdot \frac{3}{4}$  claim line, post, name

SAMPLE TYPE: x rock  
 o soil  
 ● silt  
 ○ other

S3Y1600 Sample no.  
 15, 35, 300 Cu, Pb, Zn in ppm  
 12 C, P, Z integrated metal value

C-copper } metal  
 P-lead } characteristic  
 Z-zinc }

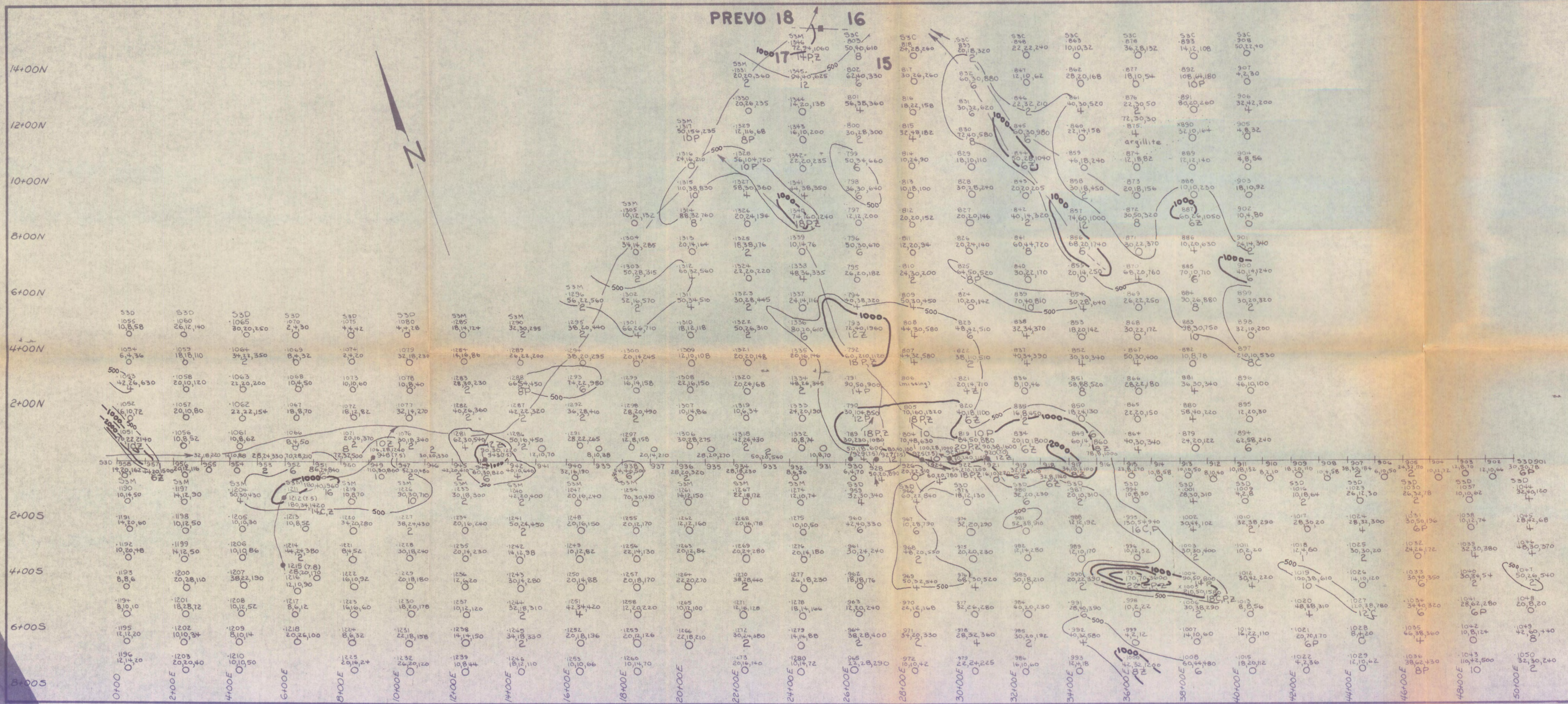
Contour value A —  $\geq 18$   
 B — 12 to 16 incl.  
 C — 8 & 10  
 D — 6  
 (70) pH

DYNASTY EXPLORATIONS LTD.

**PREVO GROUP**  
 A GRID GEOCHEMISTRY  
 NTS 105-1-12

Scale: 1" to 200'  
 Pb CONTOURS (ppm)

MAP 7



**LEGEND**

$\frac{1}{2} \frac{3}{4}$  claim line, post, name

SAMPLE TYPE x rock  
 ○ soil  
 ● silt  
 ○ other

S3Y1600 Sample no.  
 15,35,300 Cu,Pb,Zn in ppm  
 12 C,P,Z integrated metal value

C-copper } metal  
 P-lead } characteristic  
 Z-zinc }

Contour value A —  $\geq 18$   
 B — 12 to 16 incl.  
 C — 8 & 10  
 D — 6  
 (7.0) pH

DYNASTY EXPLORATIONS LTD.

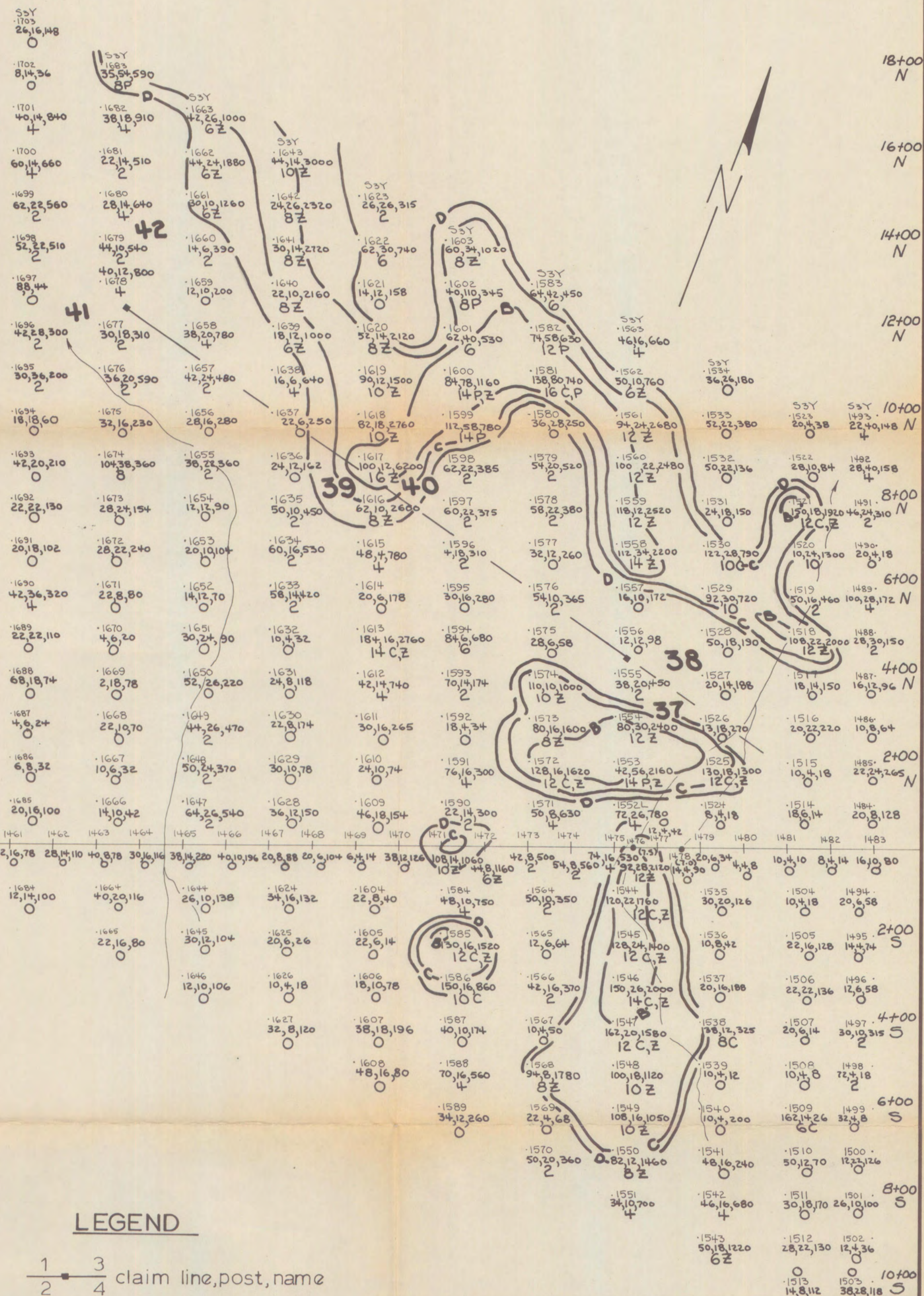
**PREVO GROUP**  
 A GRID GEOCHEMISTRY  
 NTS 105-1-12

Scale: 1" to 200'

Zn CONTOURS (ppm)

MAP 8

20+00W 18+00W 16+00W 14+00W 12+00W 10+00W 8+00W 6+00W 4+00W 0+00W



**LEGEND**

1 — 3 claim line, post, name  
2 — 4

SAMPLE TYPE: x rock  
• soil  
● silt  
○ other

S3Y1600 Sample no.  
15,35,300 Cu,Pb,Zn in ppm  
12 C,P,Z integrated metal value  
C-copper } metal  
P-lead } characteristic  
Z-zinc }

Contour value: A — ≥ 18  
B — 12 to 16 incl.  
C — 8 & 10  
D — 6  
(7.0) pH

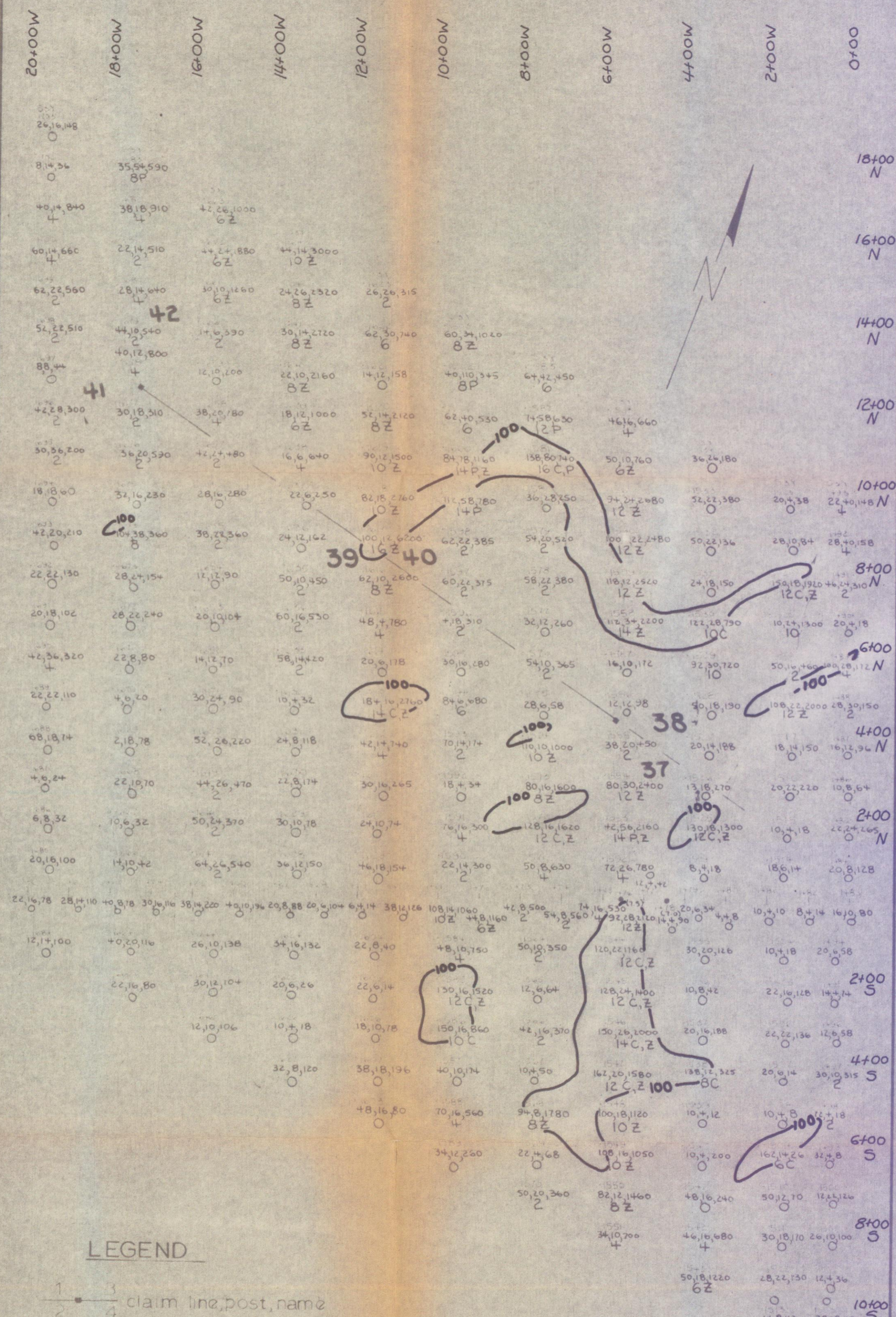
DYNASTY EXPLORATIONS LTD.

**PREVO GROUP**  
B GRID GEOCHEMISTRY  
NTS 105-1-12

scale: 1" to 200'

INTEGRATED METAL VALUE CONTOURS

**MAP 9**



**LEGEND**

1 — 3  
2 — 4 claim line, post, name

SAMPLE TYPE: x rock  
soil  
● silt  
○ other

S3Y1600 Sample no.  
15,35,300 Cu,Pb,Zn in ppm  
12 C,P,Z integrated metal value  
C-copper } metal  
P-lead } characteristic  
Z-zinc }  
Contour value A — ≥18  
B — 12 to 16 incl  
C — 8 & 10  
D — 6  
(70) pH

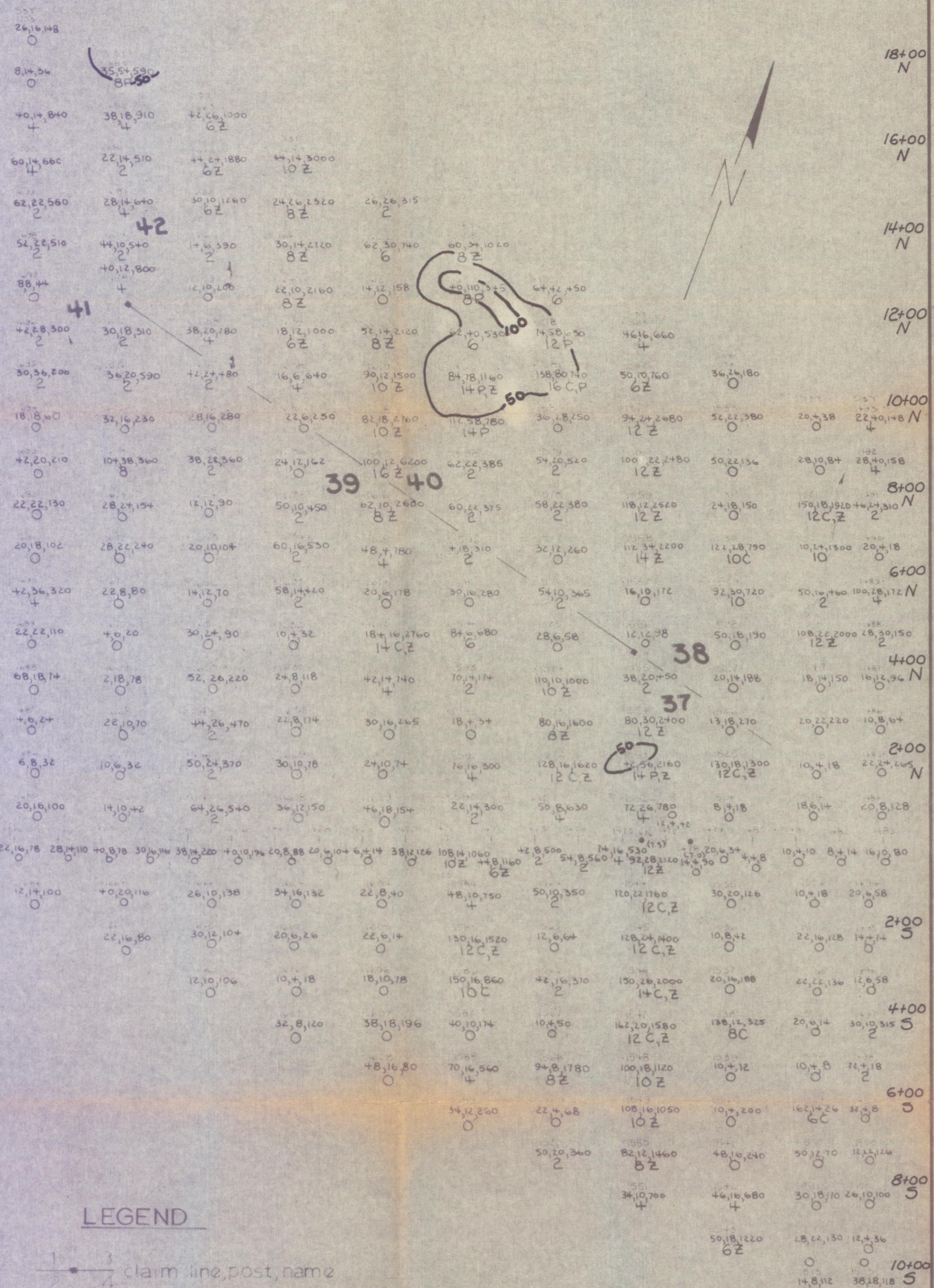
DYNASTY EXPLORATIONS LTD.

**PREVO GROUP**  
B GRID GEOCHEMISTRY  
NTS 105-1-12

Scale 1" to 200'

Cu CONTOURS (ppm)  
**MAP 10**

20+00W 18+00W 16+00W 14+00W 12+00W 10+00W 8+00W 6+00W 4+00W 2+00W 0+00



**LEGEND**

claim line, post, name

SAMPLE TYPE: x rock  
 soil  
 ● silt  
 ○ silt

S3Y1600 Sample no.  
 15,35,300 Cu,Pb,Zn in ppm  
 12 C,P,Z integrated metal value  
 C-copper } metal  
 P-lead }  
 Z-zinc } characteristic

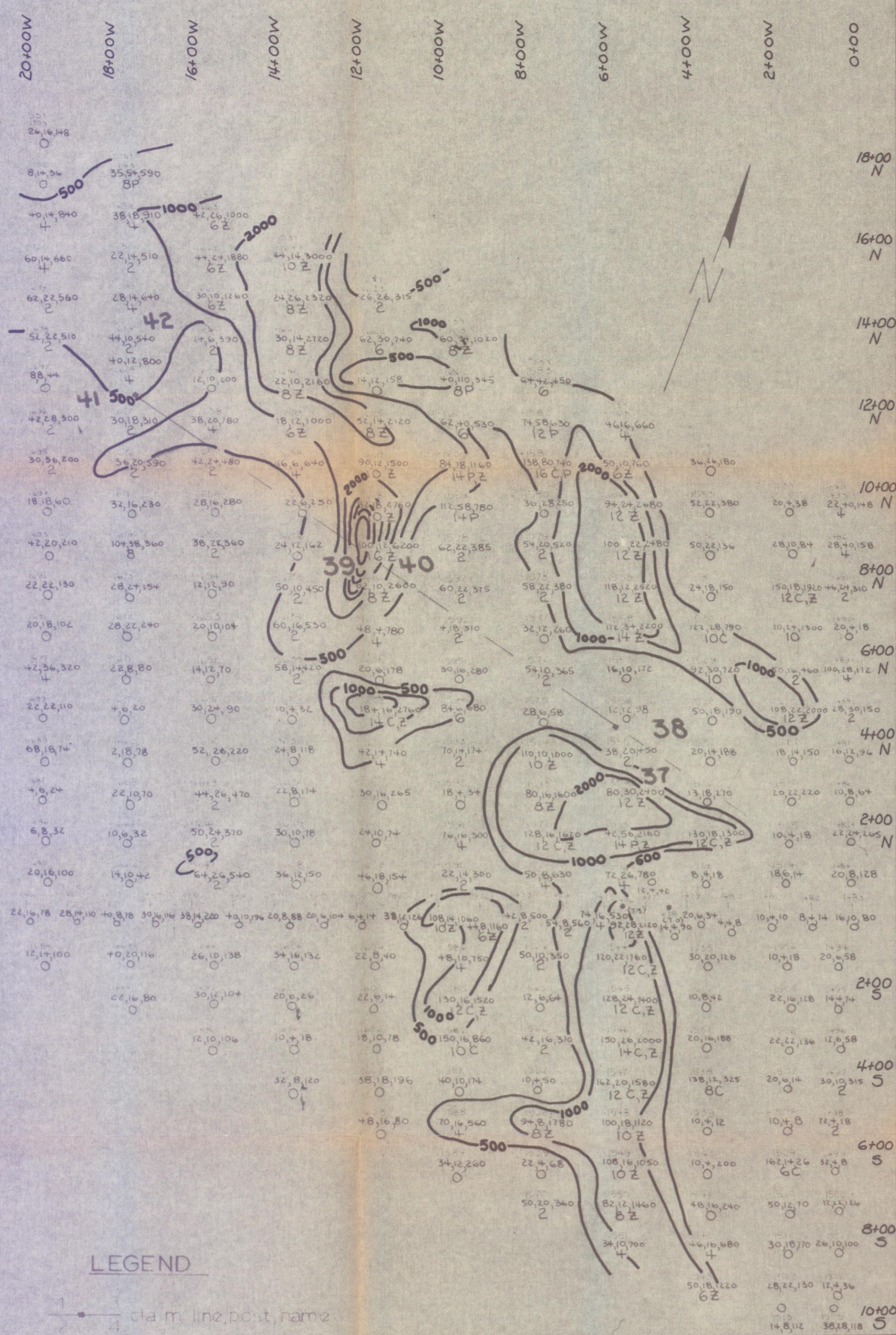
Contour value A ——— ≥ 18  
 B ——— 12 to 16 incl  
 C ——— 8 & 10  
 D ——— 6  
 (70) pH

DYNASTY EXPLORATIONS LTD.

**PREVO GROUP**  
 B GRID GEOCHEMISTRY  
 NTS 105-I-12

Scale 1" to 200'  
**Pb CONTOURS (ppm)**

MAP 11



**LEGEND**

1 ——— claim line, post, name  
 2 ———  
 3 ———  
 4 ———

SAMPLE TYPE x rock

SOIL  
 ● silt  
 ○ other

S3Y1600 Sample no.  
 15,35,300 Cu,Pb,Zn in ppm  
 12 C,P,Z integrated metal value  
 C-copper } metal  
 P-lead }  
 Z-zinc } characteristic

Contour value A ——— ≥ 18  
 B ——— 12 to 16 incl  
 C ——— 8 & 10  
 D ——— 6

(70) pH

**DYNASTY EXPLORATIONS LTD.**

**PREVO GROUP**  
 B GRID GEOCHEMISTRY  
 NTS 105-1-12

Scale 1" to 200'

Zn CONTOURS (ppm)

**MAP 12**