

Office copy

SUMMARY REPORT

MAGMILLAN PROJECT 1977

EAST CENTRAL YUKON

N.T.S. 105 F, G, J, K

BY

W. ROBERTS

APRIL 6, 1978

CYPRUS ANVIL MINING CORPORATION

FIELD WORK DONE DURING THE PERIODS:

JUNE 1 - 22; AUGUST 1 - SEPTEMBER 10, 1977.

— VOLUME II —

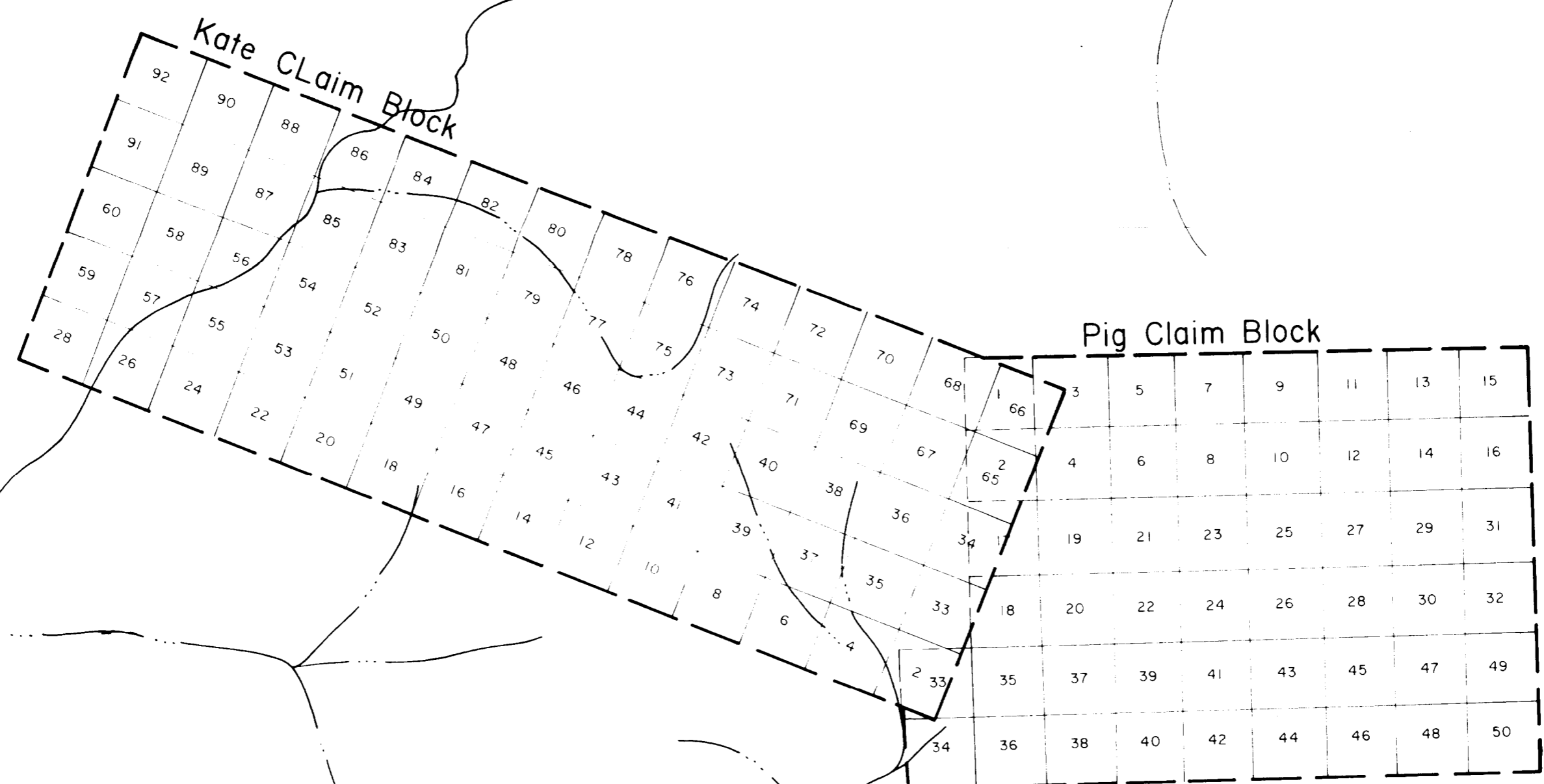
FILE COPY

PIG - KATE GROUP

105-J 2

Claim Map

1" = ½ mile



CYPRUS ANVIL MINING CORP.	
MACMILLAN PROJECT	
PIG-KATE GROUP	
CLAIM MAP	
NTS 105-J-2,7 DATE JANUARY 25, 1978	DRAWN BY C L C SCALE 1" = 1/2 MILE

PIG - KATE GROUP 105-J 2

Geology Map 1" = 400'



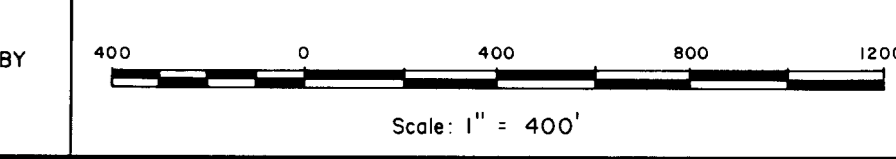
LEGEND

Age	Unit	Description
TERTIARY	6	DARK BROWN WEATHERING, DARK GREEN MEDIUM GRAINED DIORITE.
ORDOVICIAN to DEVONIAN	5	LIGHT GREY WEATHERING, INTERBEDDED GREY TO GREENISH GREY SHALE WITH LENSES, POOLS AND THIN BEDS OF LIGHT GREY LIMESTONE.
	4	GREY TO TAN WEATHERING INTERBEDDED GREY TO BLACK CHERT AND SHALE.
	4c	DARK GREY WEATHERING, BIOTURBATED INTERBEDDED BLACK AND WHITE CHERT.
	4b	GREY WEATHERING, MASSIVE BEDDED GREEN AND GREY CHERT WITH ELONGATED FRAGMENTS OF BLACK CHERT.
	4a	TAN WEATHERING, LIGHT GREENISH GREY SHALE OFTEN CONTAINING FINE DISSEMINATED PYRITE.
CAMBRO-ORDOVICIAN	3	LIGHT GREY TO BLACK WEATHERING, BLACK TO DARK GREY THICK BEDDED CHERT WITH MINOR BLACK SHALE PARTINGS.
	2	SILVER GREY TO BLACK WEATHERING, BLACK GRAPHIC SILICEOUS SHALE.
	1	WHITE TO BROWN WEATHERING, BANDED WHITE, GREEN AND PURPLE CALC - SILICATES AND HORNFELSSED SILICEOUS SHALE.
	1b	SANDY GREY TO TAN LIMESTONE WITH SHALE PARTINGS, POSSIBLE WAVY BANDED LIMESTONE.
	1c	BANDED CALC - SILICATES WITH POOLS AND LENSES OF LIMESTONE.

Symbols	
(Dotted line)	LIMIT OF OUTCROP
(Solid line)	GEOLOGICAL CONTACTS DEFINED, ASSUMED
(Wavy line)	FAULTS, DEFINED, ASSUMED
(Short dashes)	BEDDING
(Long dashes)	FOLIATION
(Arrow)	PLUNGING ISOCLINAL FOLDS
(X)	SHOWING
(Circle with dot)	FOSSIL OCCURRENCE

CYPRUS ANVIL MINING CORPORATION
 MACMILLAN PROJECT
 PIG-KATE GROUP
 GEOLOGY MAP

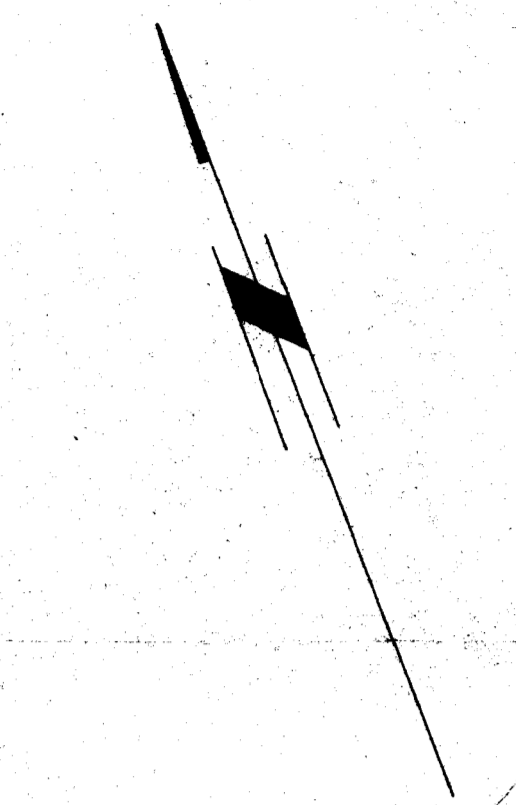
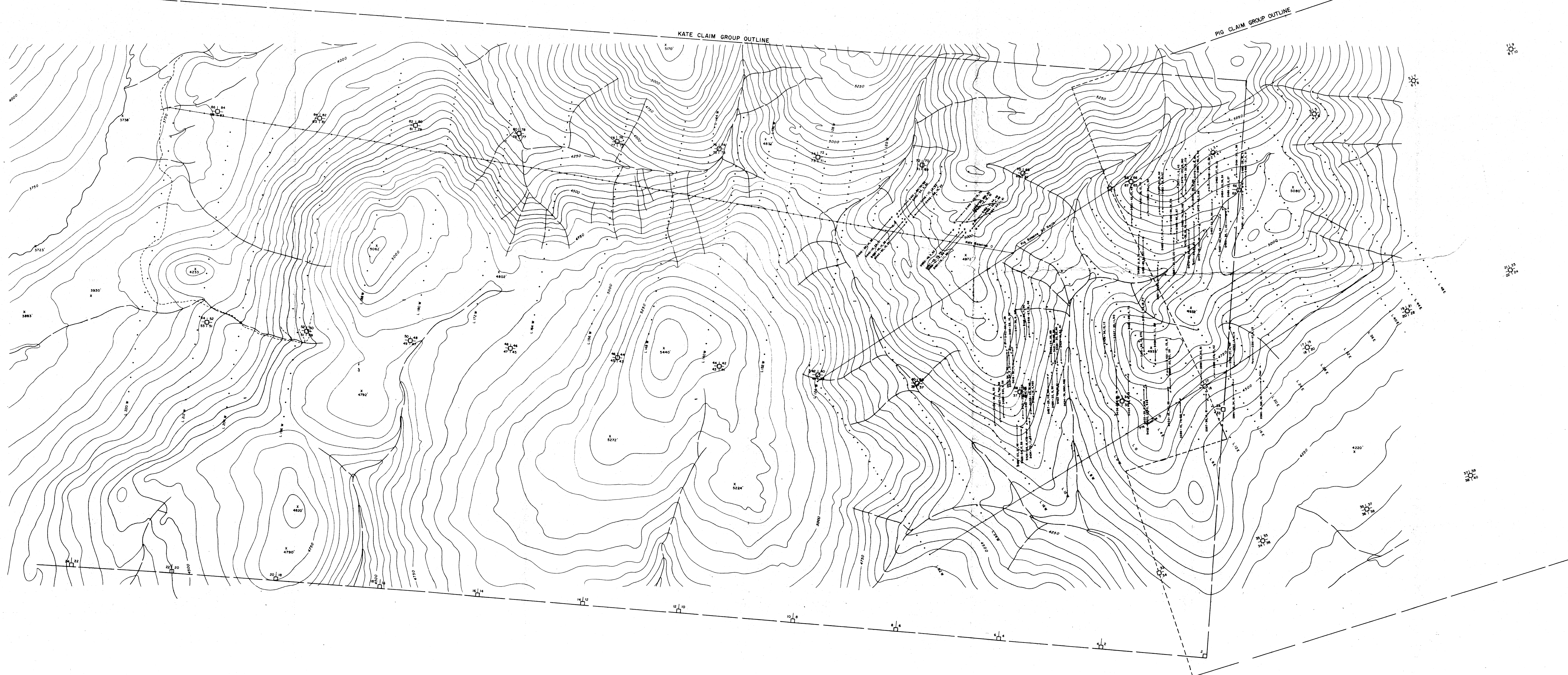
N.T.S.
 105-J-2,7
 GEOLOGY BY W. ROBERTS, D. KILBY
 DRAWN BY C. L. CORY
 DATE DECEMBER 29, 1977



PIG KATE GROUP 105-J 2

Geochemical Values Map - Rock Chips

1" = 400'



LEGEND
 X — Sample Site 10, 25, 300 (Cu, Pb, Zn)
 Values in parts per million (ppm)
 Compiled by: D. GAVIS

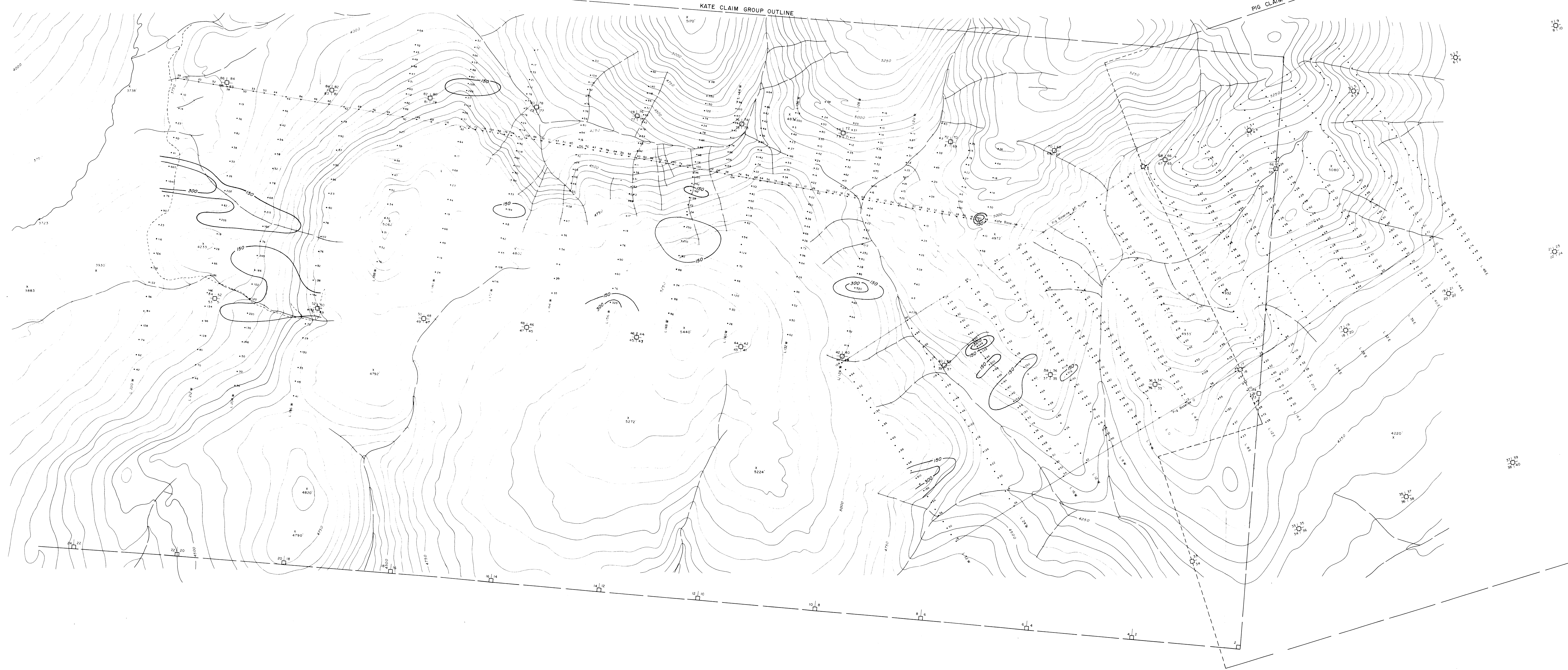
CYPRUS ANVIL MINING CORPORATION
 MACMILLAN PROJECT
 PIG-KATE GROUP
 GEOCHEMICAL VALUES MAP - ROCK CHIPS

N.T.S.
 105 - J - 2, 7
 DRAWN BY: C. L. CORY
 DATE: DECEMBER 1977
 Scale: 1" = 400'

PIG -KATE GROUP 105-J 2

Geochemical Values Map - Copper

1" = 400'

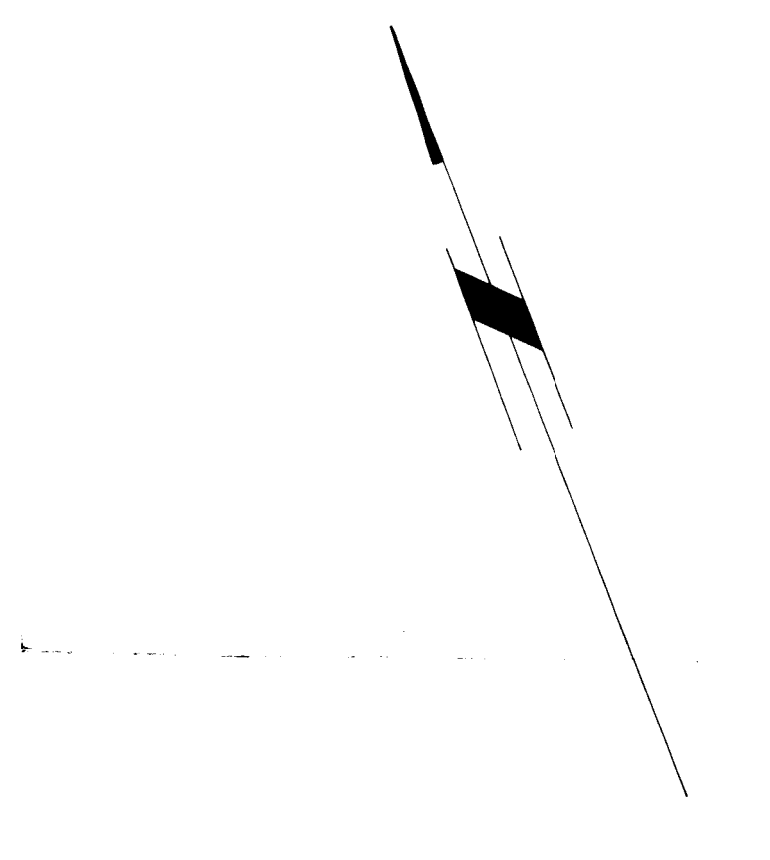


4170

4220

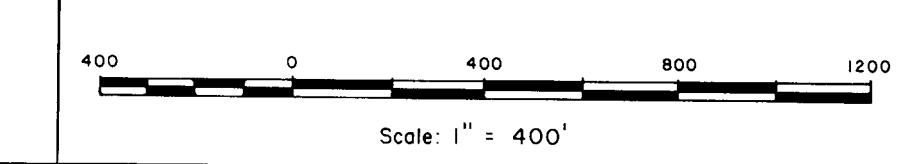
4270

4320



CYPRUS ANVIL MINING CORPORATION
 MACMILLAN PROJECT
 PIG-KATE GROUP
 GEOCHEMICAL VALUES MAP - COPPER

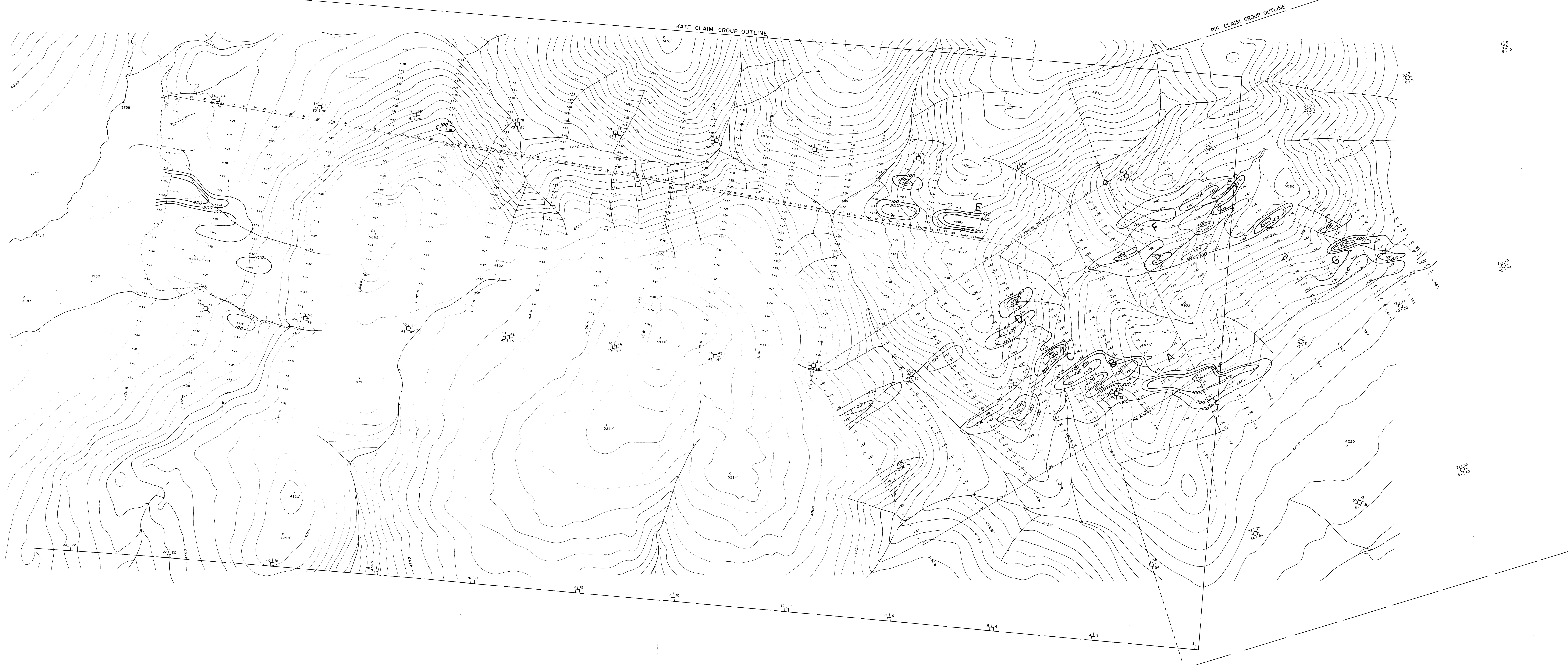
N.T.S.
 105-1-2,7
 DRAWN BY: C.L. CORY
 DATE: DECEMBER 1977



PIG - KATE GROUP 105-J 2

Geochemical Values Map - Lead

1" = 400'

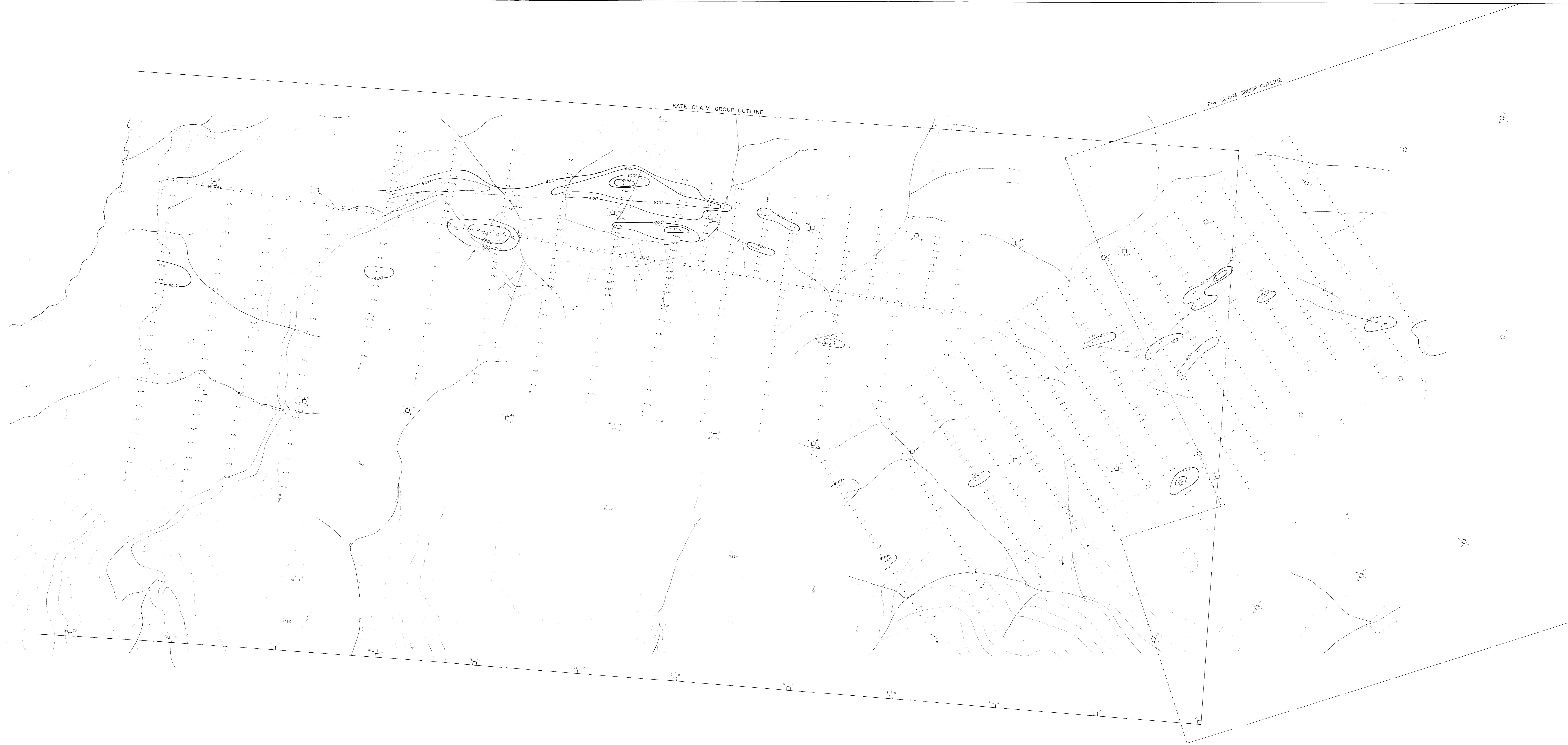


CYPRUS ANVIL MINING CORPORATION	
MACMILLAN PROJECT	
PIG - KATE GROUP	
GEOCHEMICAL VALUES MAP - LEAD	
N.T.S. 105 - J - 2, 7 DRAWN BY: C. L. COBY DATE: DECEMBER 1977	Scale 1" = 400'

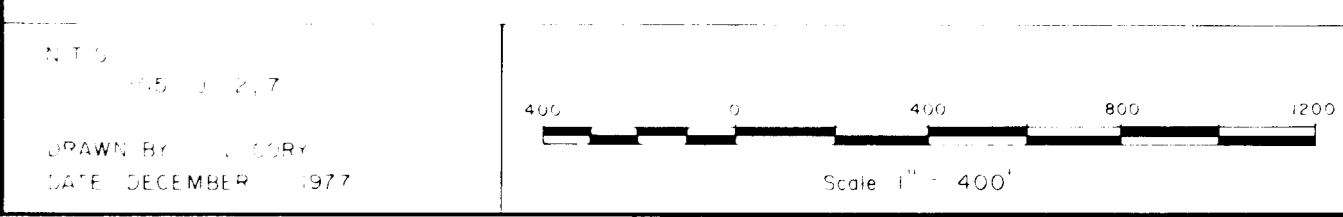
FIG - KATE GROUP 105-J 2

Geochemical Values Map - Zinc

1" = 400'



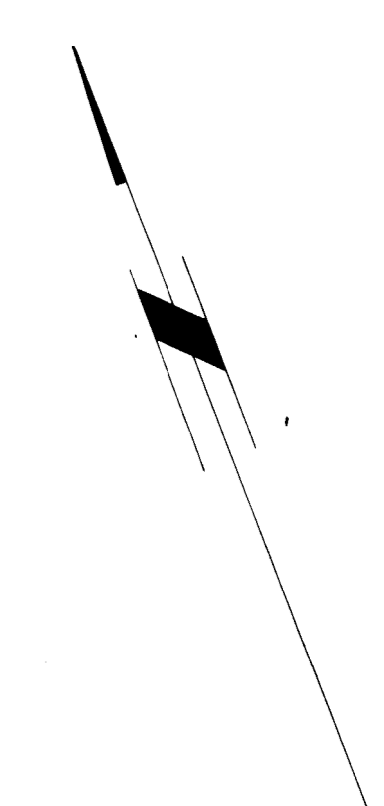
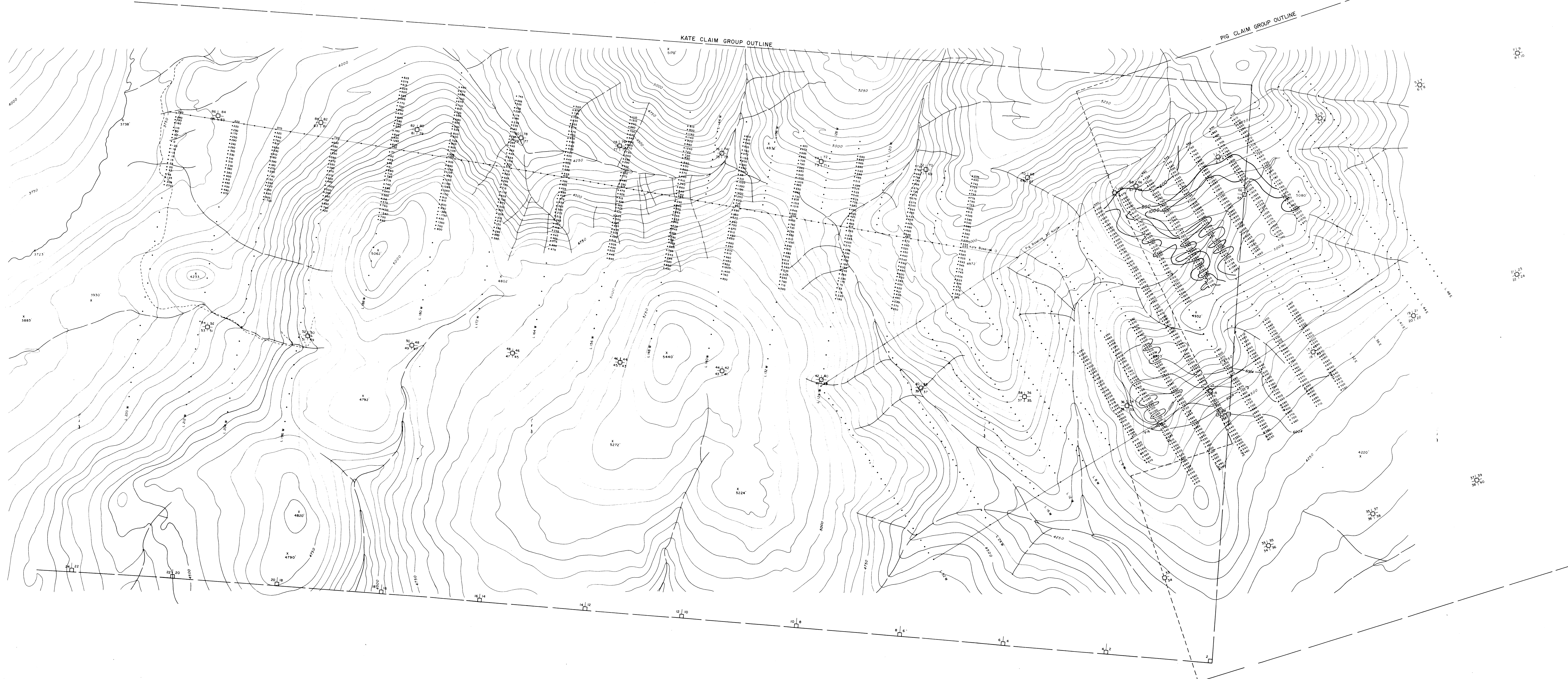
CYPRUS ANVIL MINING CORPORATION
 MACMILLAN PROJECT
 FIG-KATE GROUP
 GEOCHEMICAL VALUES MAP - ZINC



PIG - KATE GROUP 105-J 2

Ground Magnetometer Survey

1" = 400'



LEGEND
 ALL VALUES IN GAMMAS (S)
 CONTOUR INTERVAL 600, 800, 1000, 1200 &
 SURVEY DONE BY M. KILBY

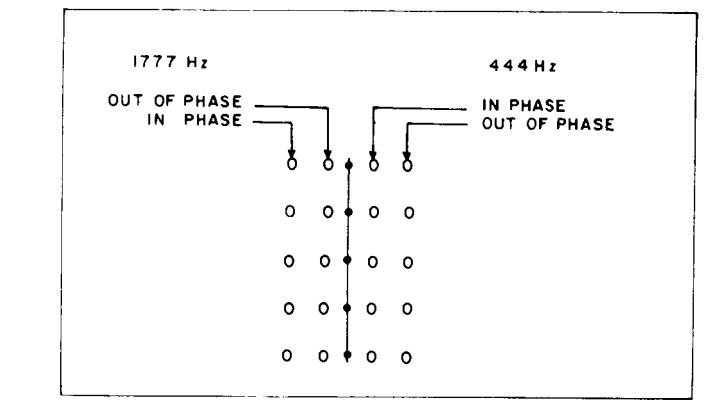
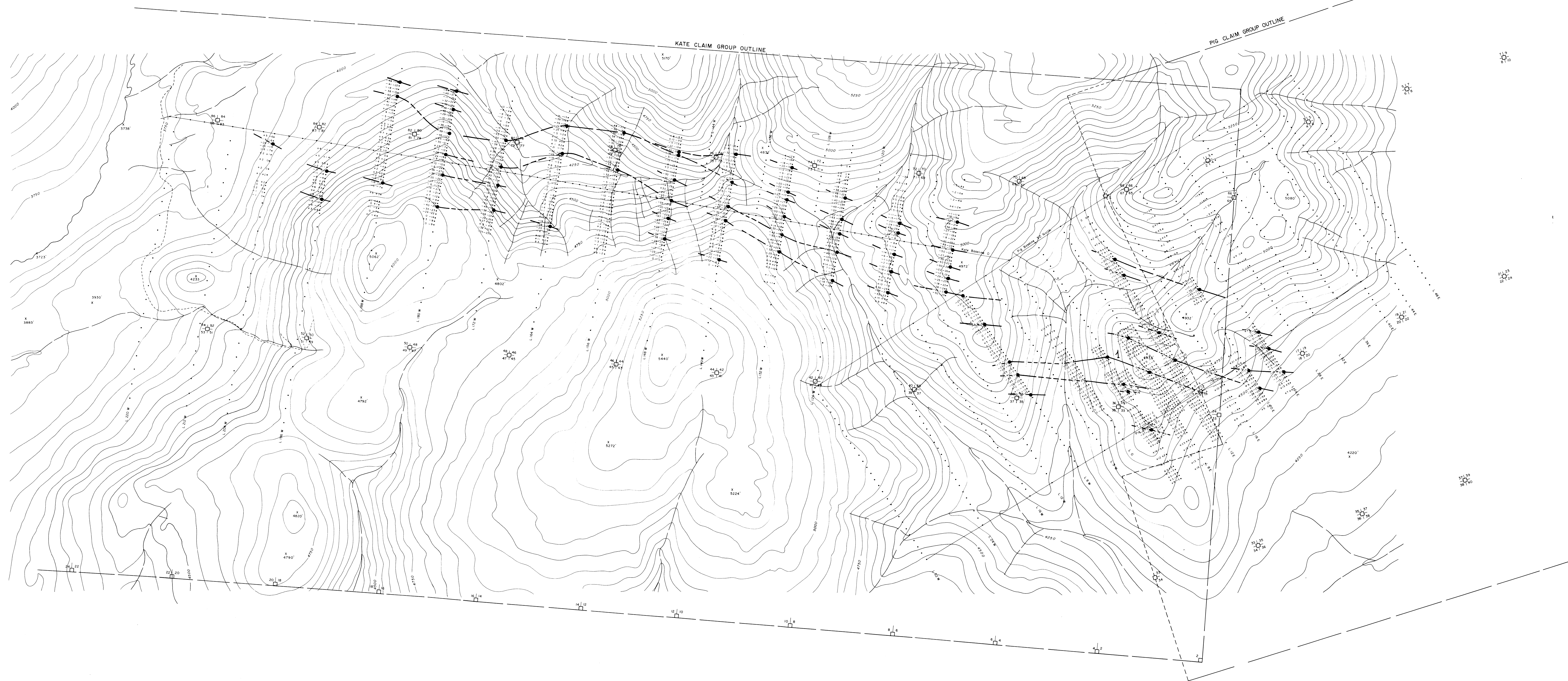
CYPRUS ANVIL MINING CORPORATION
 MACMILLAN PROJECT
 PIG-KATE GROUP
 GROUND MAGNETOMETER SURVEY

N.T.S.
 105-J-2,7
 DRAWN BY C.L. COFFY
 DATE DECEMBER 1977
 Scale: 1" = 400'

PIG - KATE GROUP 105-J 2

HEM Survey

1" = 400'



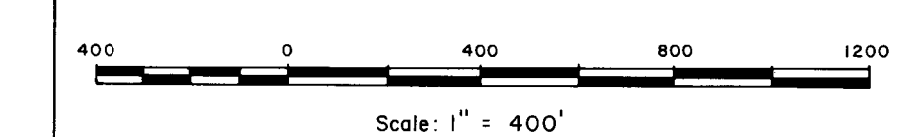
CONDUCTOR AXIS

COIL SPACING - 200 Feet

FIELD WORK DONE BY J. JOHNSTON
H. FRETWELL
M. KILBY

CYPRUS ANVIL MINING CORPORATION
MACMILLAN PROJECT
PIG-KATE GROUP
HEM SURVEY

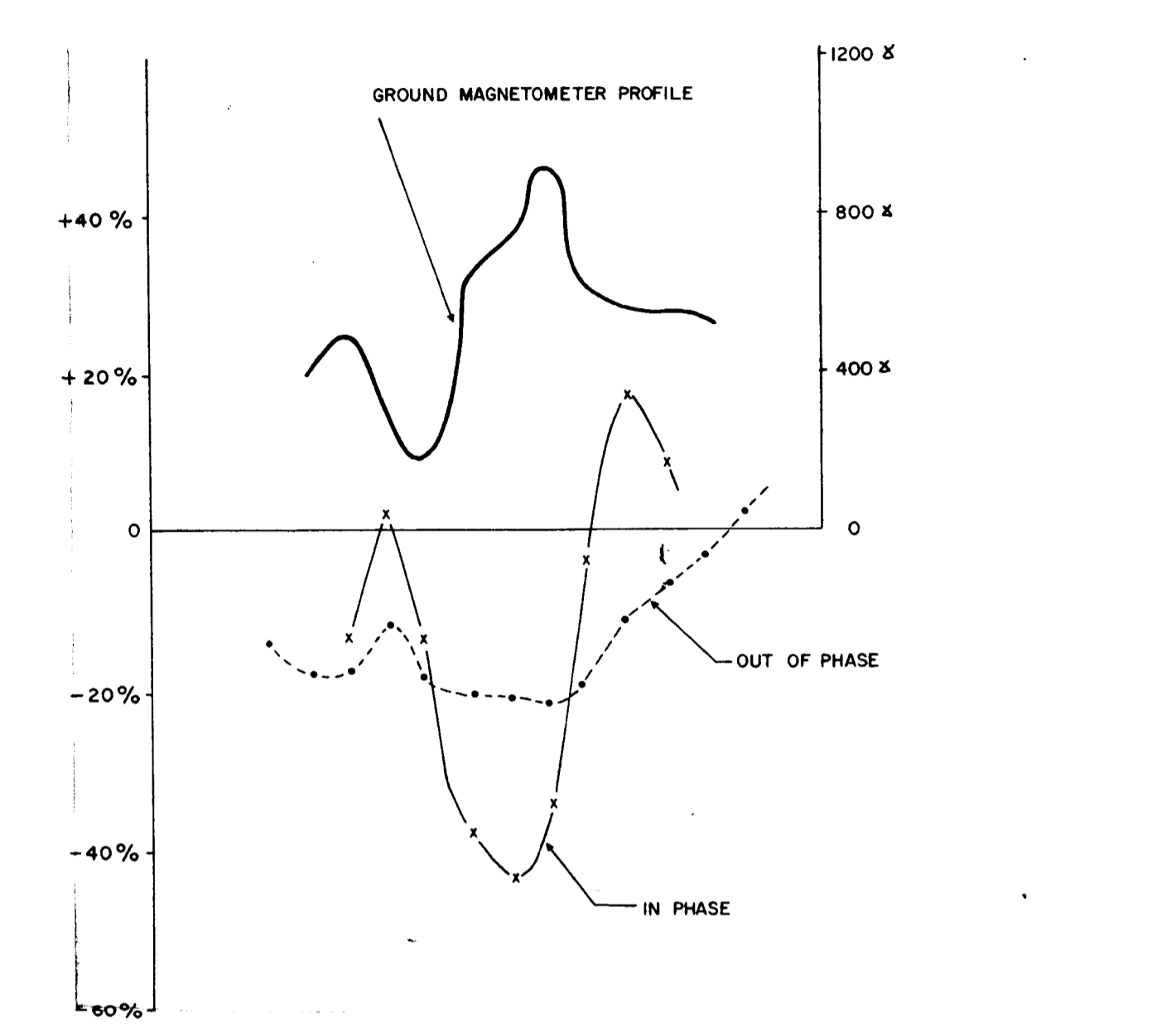
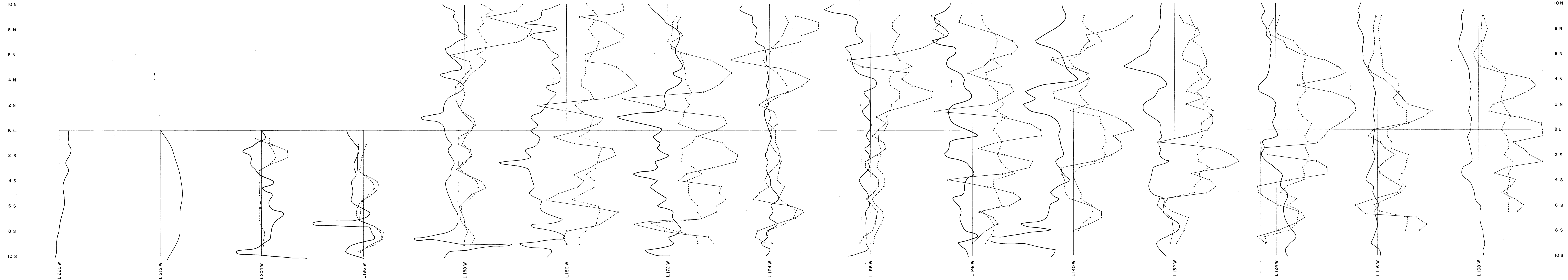
N.T.S.
105-J-2,7
DRAWN BY: C. L. CORY
DATE: DECEMBER 1977



PIG - KATE GROUP 105-J 2

HEM and Magnetometer Profiles - KATE Grid

1" = 200'



CYPRUS ANVIL MINING CORPORATION
 MACMILLAN PROJECT
 PIG-KATE GROUP
 HEM & MAGNETOMETER PROFILES

N.T.S.
 105-J-2,7
 DRAWN BY C. L. CORY
 DATE JANUARY 18, 1978

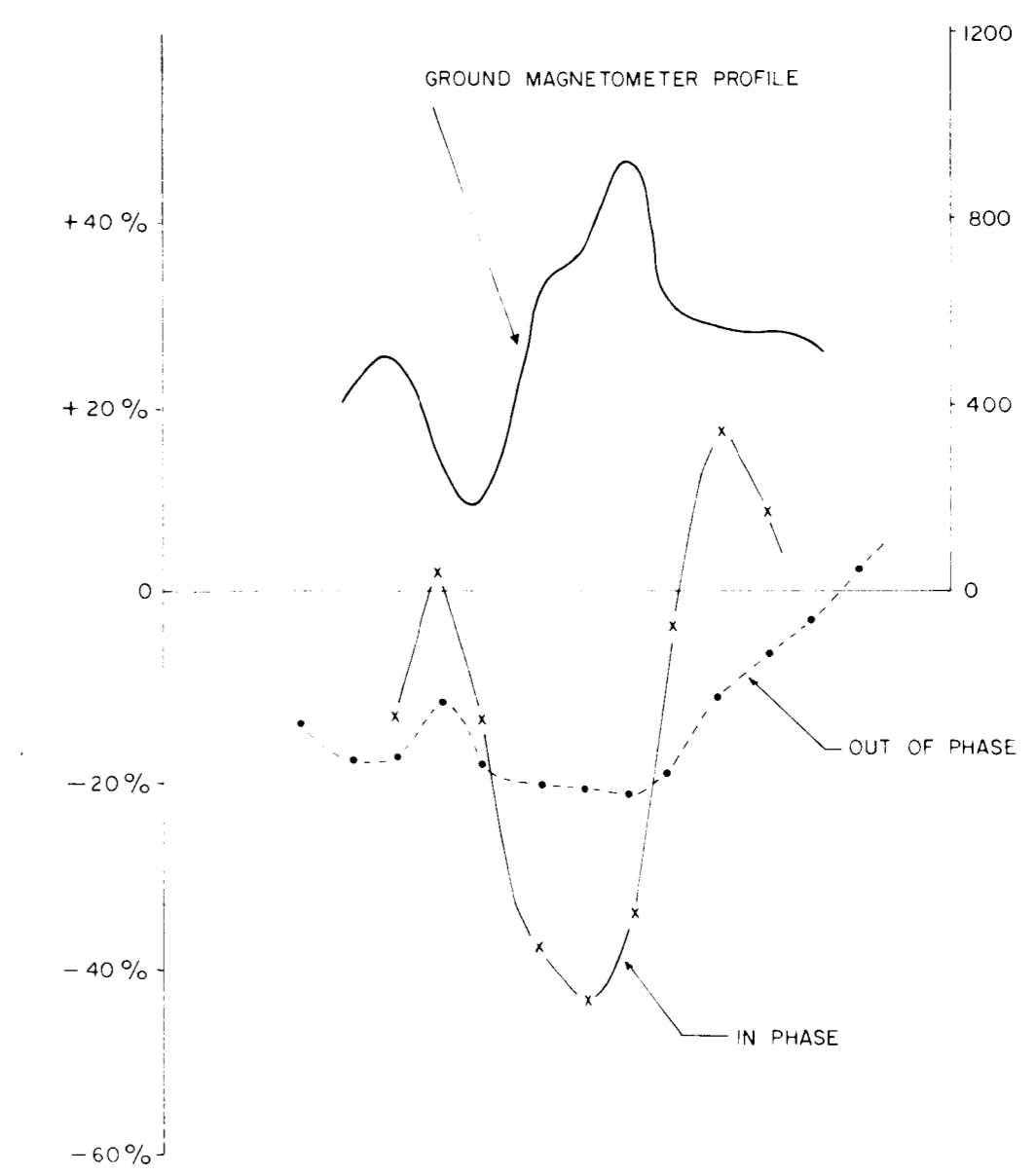
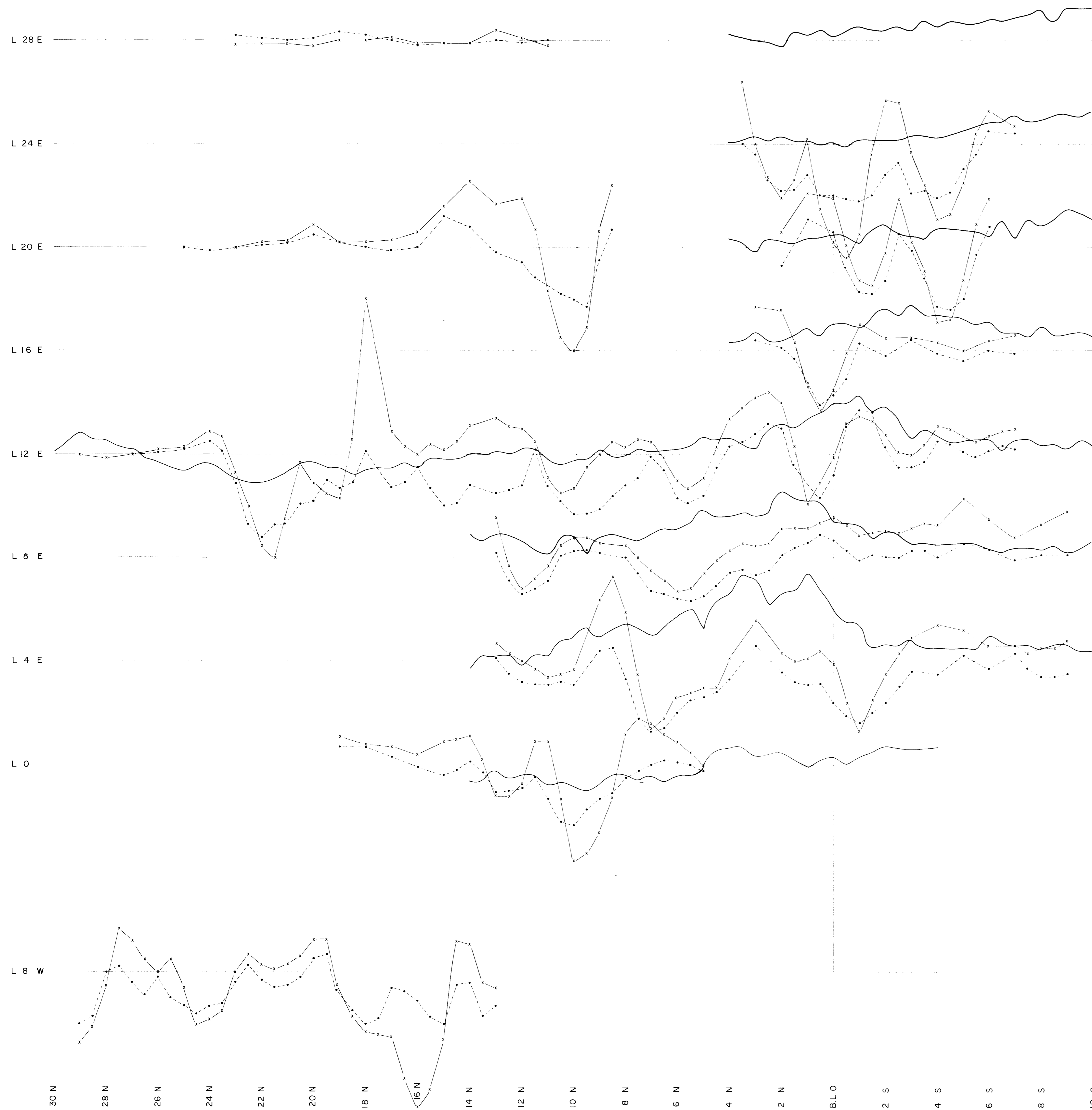
Scale 1" = 200'

PIG - KATE GROUP

105-J 2

HEM and Magnetometer Profiles - PIG Grid

1" = 400'



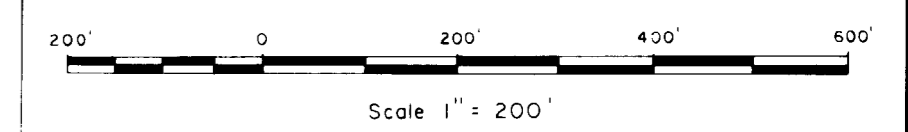
CYPRUS ANVIL MINING CORPORATION

MACMILLAN PROJECT

PIG - KATE GROUP

HEM & MAGNETOMETER PROFILES

N.T.S.
105 - J - 2, 7
DRAWN BY C. L. CORY
DATE JANUARY 20, 1978

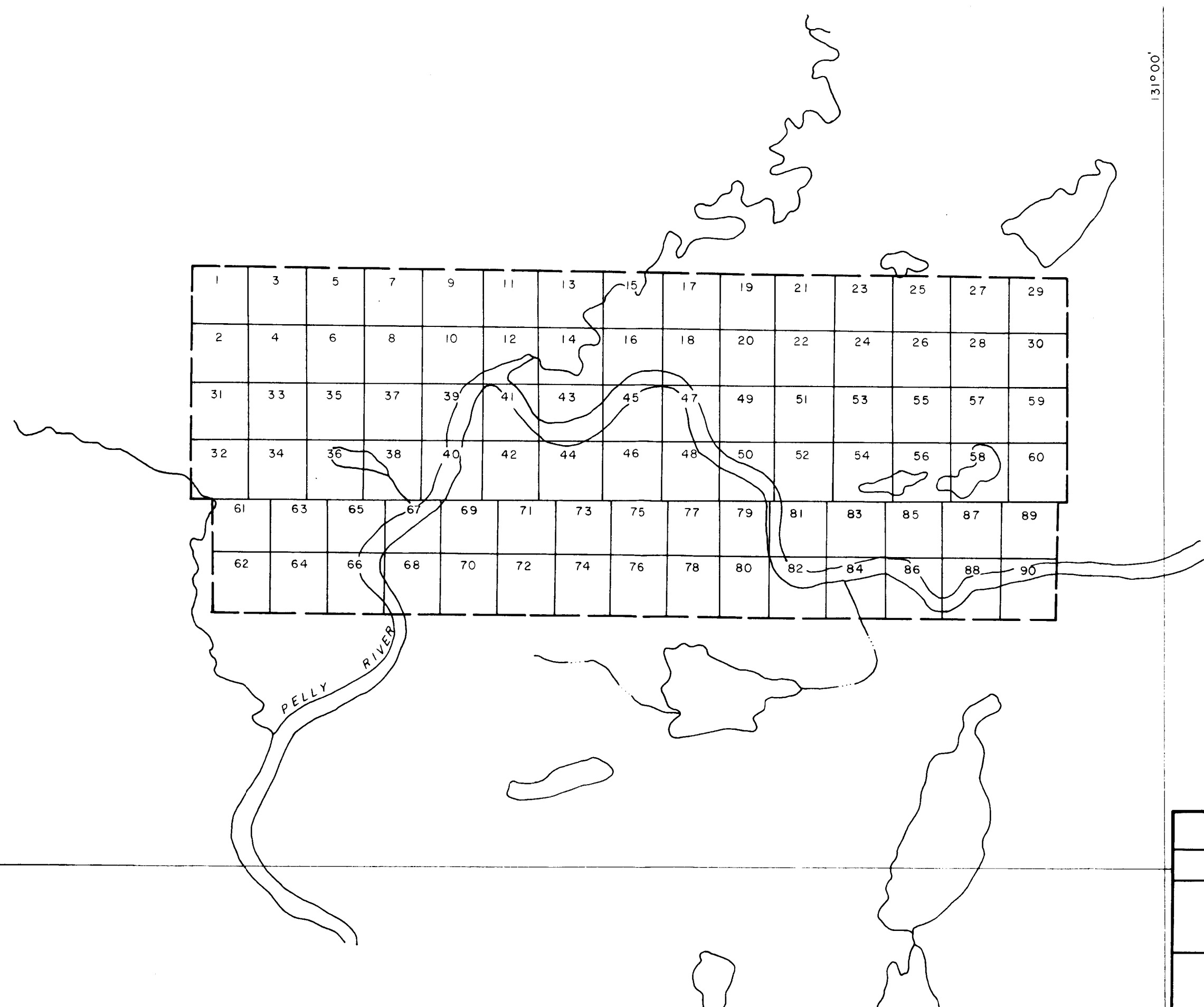


DWONK GROUP

105-G 14

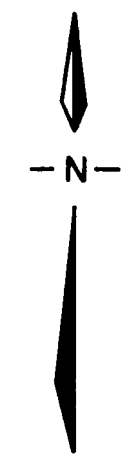
Claim Map

1" = $\frac{1}{2}$ mile



61°55'

131°00'



1	3	5	7	9	11	13	15	17	19	21	23	25	27	29
2	4	6	8	10	12	14	16	18	20	22	24	26	28	30
31	33	35	37	39	41	43	45	47	49	51	53	55	57	59
32	34	36	38	40	42	44	46	48	50	52	54	56	58	60
61	63	65	67	69	71	73	75	77	79	81	83	85	87	89
62	64	66	68	70	72	74	76	78	80	82	84	86	88	90

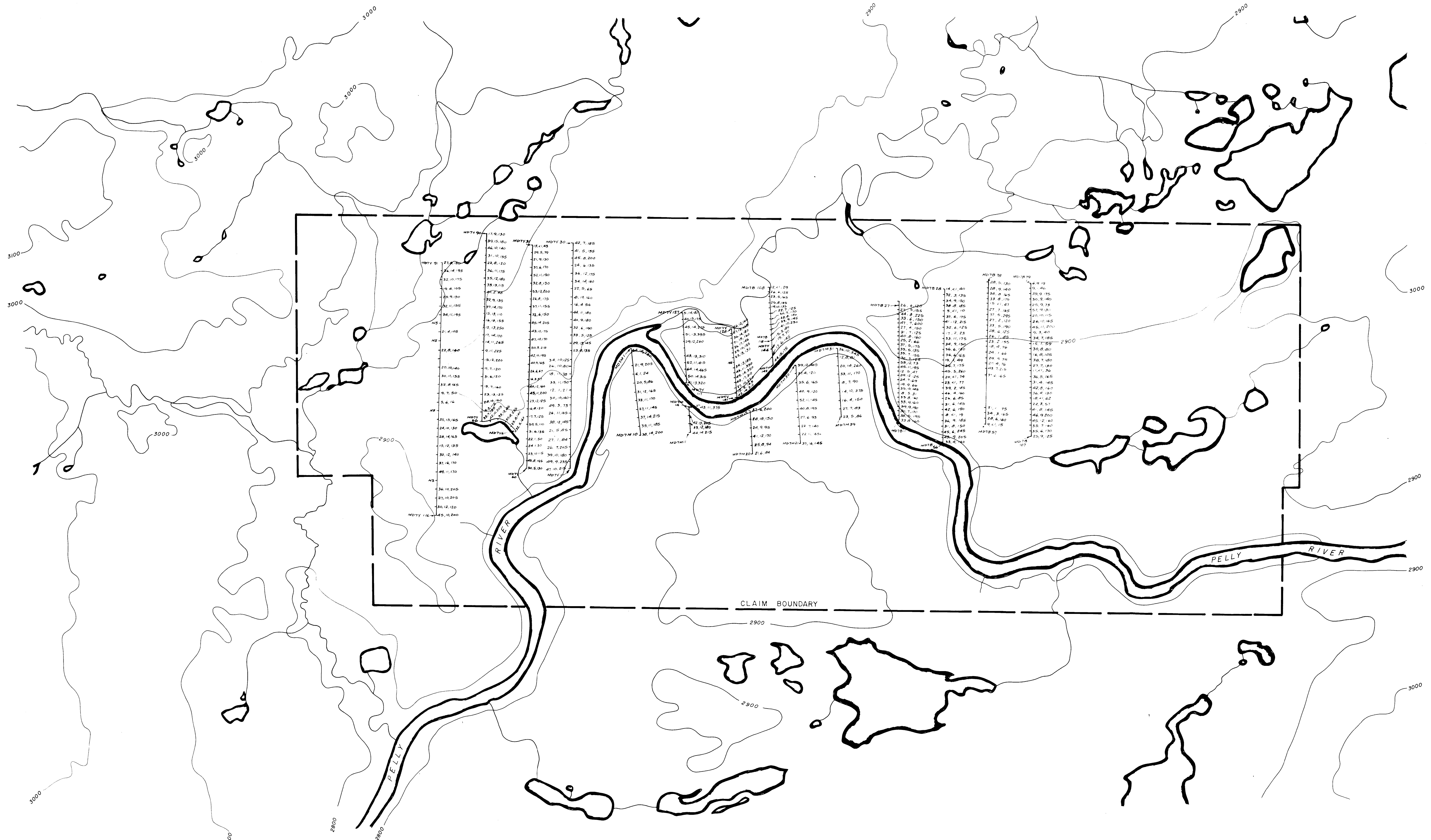
MacMILLAN PROJECT	
DWONK CLAIMS	
CLAIM MAP	
SCALE IN FEET	
0	5280
Mar., 1978 WR/rwr	105-G-14

DWONK GROUP

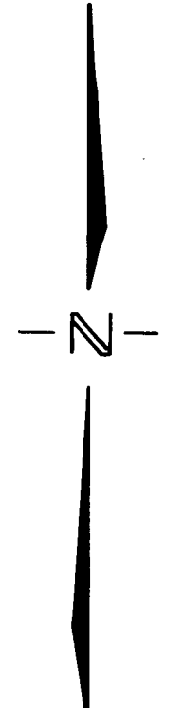
105-G 14

Geochemical Values Map - Soils

1" = 1000'



SCALE IN FEET
 1000 0 1000 2000 3000 4000



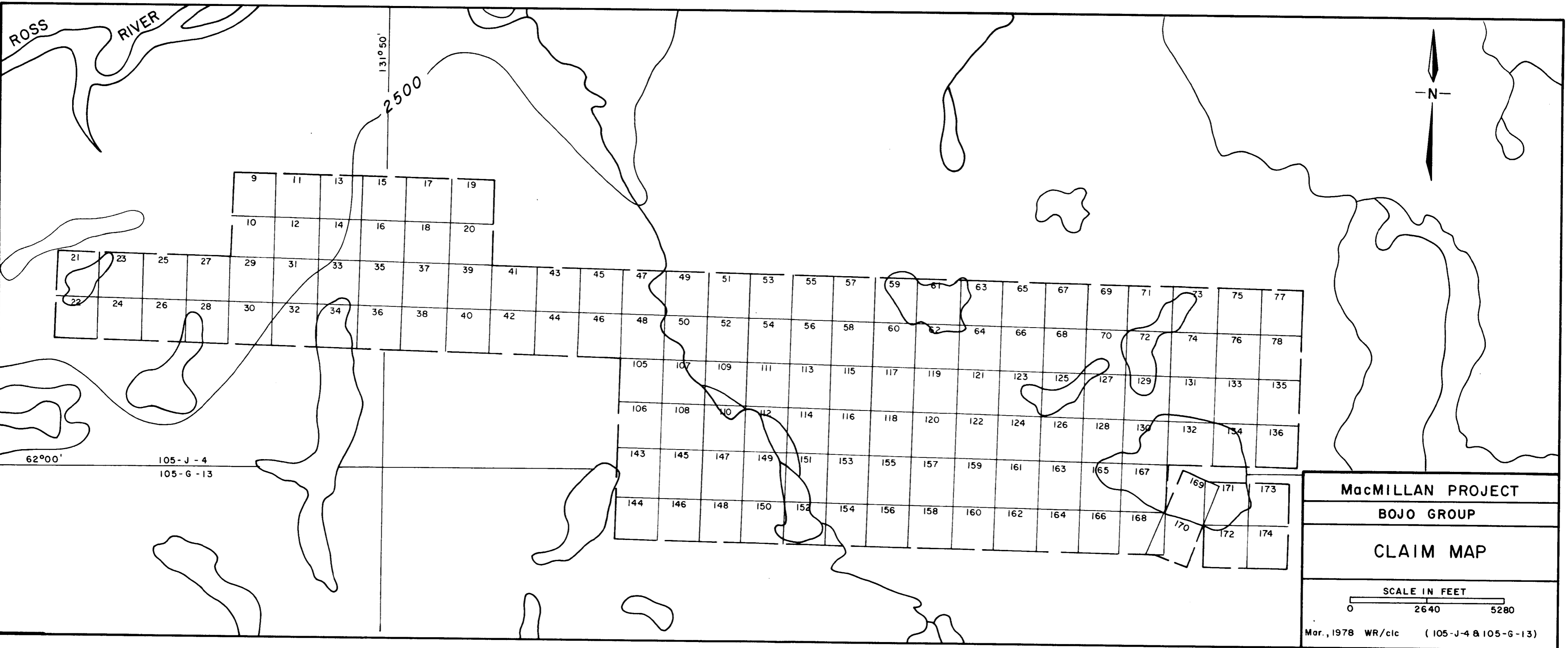
CYPRUS ANVIL MINING CORPORATION	
MacMILLAN PROJECT	
DWNOK CLAIMS	
GEOCHEMICAL VALUES MAP	
Cu, Pb, Zn	
REVISED:	NTS: 105-G-14
	DRAWN BY: WR/rwr
	DATE: FEB, 1978

BOJO GROUP

105-J 4, G 13

Claim Map

1" = 1/2 mile

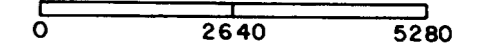


MacMILLAN PROJECT

BOJO GROUP

CLAIM MAP

SCALE IN FEET



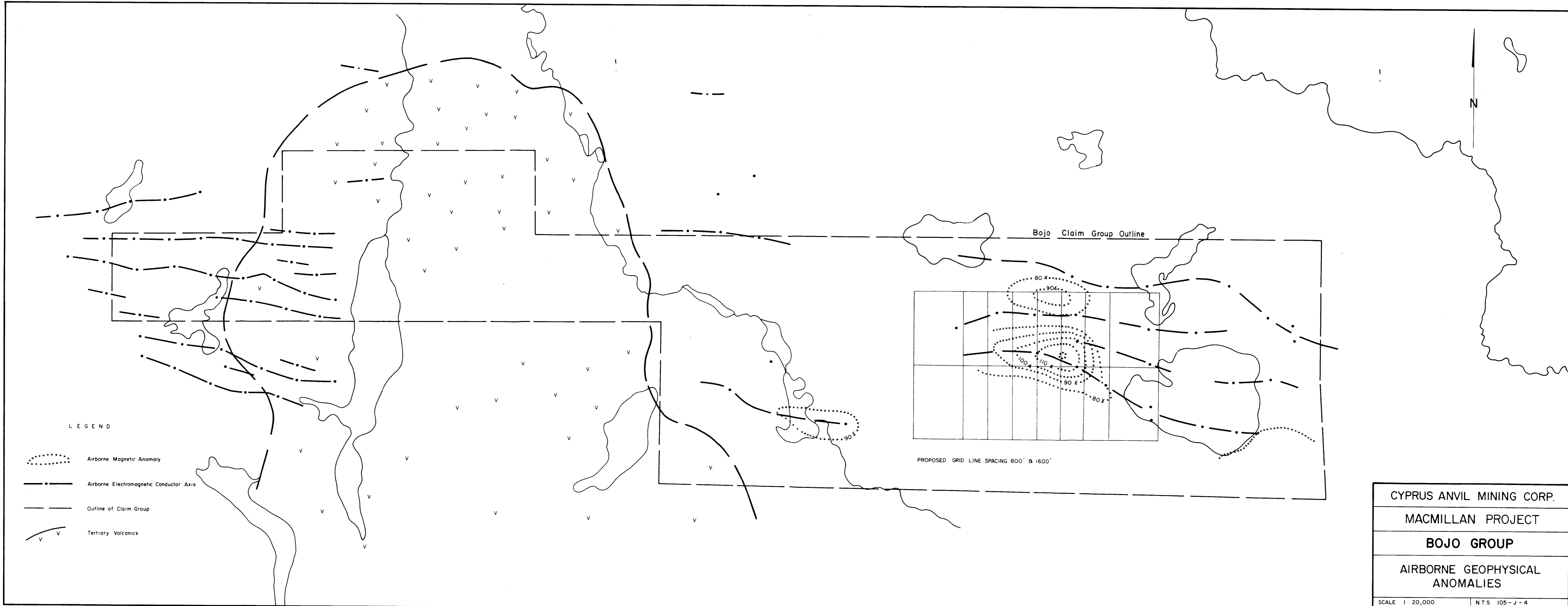
Mar., 1978 WR/clc (105-J-4 & 105-G-13)

BOJO GROUP

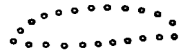
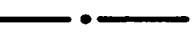
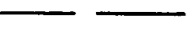

105-J 4, G 13

Airborne Geophysical Target

1:20,000



LEGEND

-  Airborne Magnetic Anomaly
-  Airborne Electromagnetic Conductor Axis
-  Outline of Claim Group
-  Tertiary Volcanics

Bojo Claim Group Outline

PROPOSED GRID LINE SPACING 800' x 1600'

CYPRUS ANVIL MINING CORP.	
MACMILLAN PROJECT	
BOJO GROUP	
AIRBORNE GEOPHYSICAL ANOMALIES	
SCALE 1:20,000 DATE MARCH 31, 1978	N.T.S. 105-J-4 DRAWN BY: C. L. CORY