

**GEOCHEMICAL REPORT**  
**ON**  
**DIVIDE MINERAL CLAIMS**  
**No's 1 - 48 Inclusive**  
**Claim Sheet No. 115-I-3**

**HEADWATERS OF THE KLAZA RIVER**  
**68° 8' N. Lat., 137° 11' E. Long.**

**By**

**T. D. Wilkinson, Dipl. Tech.,**  
**D. D. Campbell, P. Eng., Ph. D.,**

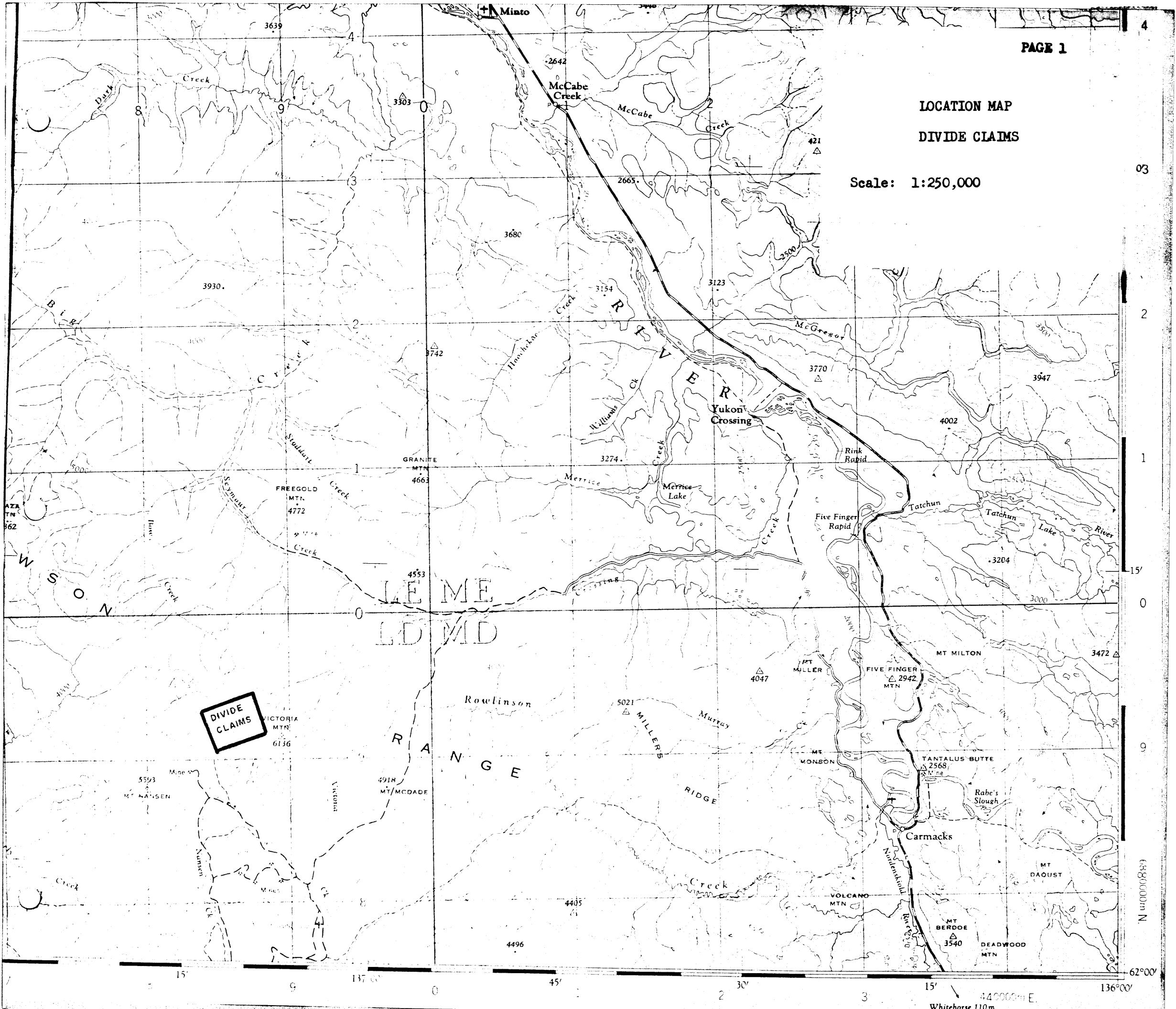
**Work Completed Between July 13 and August 5, 1968**

## TABLE OF CONTENTS

	Page No:
LOCATION MAP	1
STATEMENT OF EXPENSES	2
LIST OF PERSONS EMPLOYED	3
INTRODUCTION	4
LOCATION AND ACCESS	4
SURVEYING	5
SAMPLING METHOD	5
ASSAYING METHOD	6
INTERPRETATION OF RESULTS	6
DISCUSSION OF RESULTS	8
CONCLUSIONS	9
RECOMMENDATIONS	10
STATEMENT OF QUALIFICATION T. D. Wilkinson	11
EVIDENCE OF EXPENDITURES	12
AFFADAVIT	13
GEOCHEMICAL SURVEY RESULTS - Figure 1	in back pocket
GEOLOGY SKETCH MAP - Figure 2	in back pocket
TABLE 1	7

LOCATION MAP  
DIVIDE CLAIMS

Scale: 1:250,000



DIVIDE CLAIMS


4  
03  
2  
1  
0  
15'  
0  
9  
62°00' N

15' 30' 45' 60' 75' 90' 105' 120' 135' 150' 165' 180' 195' 210' 225' 240' 255' 270' 285' 300' 315' 330' 345' 360' 375' 390' 405' 420' 435' 450' 465' 480' 495' 510' 525' 540' 555' 570' 585' 600' 615' 630' 645' 660' 675' 690' 705' 720' 735' 750' 765' 780' 795' 810' 825' 840' 855' 870' 885' 900' 915' 930' 945' 960' 975' 990' 1005' 1020' 1035' 1050' 1065' 1080' 1095' 1110' 1125' 1140' 1155' 1170' 1185' 1200' 1215' 1230' 1245' 1260' 1275' 1290' 1305' 1320' 1335' 1350' 1365' 1380' 1395' 1410' 1425' 1440' 1455' 1470' 1485' 1500' 1515' 1530' 1545' 1560' 1575' 1590' 1605' 1620' 1635' 1650' 1665' 1680' 1695' 1710' 1725' 1740' 1755' 1770' 1785' 1800' 1815' 1830' 1845' 1860' 1875' 1890' 1905' 1920' 1935' 1950' 1965' 1980' 1995' 2010' 2025' 2040' 2055' 2070' 2085' 2100' 2115' 2130' 2145' 2160' 2175' 2190' 2205' 2220' 2235' 2250' 2265' 2280' 2295' 2310' 2325' 2340' 2355' 2370' 2385' 2400' 2415' 2430' 2445' 2460' 2475' 2490' 2505' 2520' 2535' 2550' 2565' 2580' 2595' 2610' 2625' 2640' 2655' 2670' 2685' 2700' 2715' 2730' 2745' 2760' 2775' 2790' 2805' 2820' 2835' 2850' 2865' 2880' 2895' 2910' 2925' 2940' 2955' 2970' 2985' 3000' 3015' 3030' 3045' 3060' 3075' 3090' 3105' 3120' 3135' 3150' 3165' 3180' 3195' 3210' 3225' 3240' 3255' 3270' 3285' 3300' 3315' 3330' 3345' 3360' 3375' 3390' 3405' 3420' 3435' 3450' 3465' 3480' 3495' 3510' 3525' 3540' 3555' 3570' 3585' 3600' 3615' 3630' 3645' 3660' 3675' 3690' 3705' 3720' 3735' 3750' 3765' 3780' 3795' 3810' 3825' 3840' 3855' 3870' 3885' 3900' 3915' 3930' 3945' 3960' 3975' 3990' 4005' 4020' 4035' 4050' 4065' 4080' 4095' 4110' 4125' 4140' 4155' 4170' 4185' 4200' 4215' 4230' 4245' 4260' 4275' 4290' 4305' 4320' 4335' 4350' 4365' 4380' 4395' 4410' 4425' 4440' 4455' 4470' 4485' 4500' 4515' 4530' 4545' 4560' 4575' 4590' 4605' 4620' 4635' 4650' 4665' 4680' 4695' 4710' 4725' 4740' 4755' 4770' 4785' 4800' 4815' 4830' 4845' 4860' 4875' 4890' 4905' 4920' 4935' 4950' 4965' 4980' 4995' 5010' 5025' 5040' 5055' 5070' 5085' 5100' 5115' 5130' 5145' 5160' 5175' 5190' 5205' 5220' 5235' 5250' 5265' 5280' 5295' 5310' 5325' 5340' 5355' 5370' 5385' 5400' 5415' 5430' 5445' 5460' 5475' 5490' 5505' 5520' 5535' 5550' 5565' 5580' 5595' 5610' 5625' 5640' 5655' 5670' 5685' 5700' 5715' 5730' 5745' 5760' 5775' 5790' 5805' 5820' 5835' 5850' 5865' 5880' 5895' 5910' 5925' 5940' 5955' 5970' 5985' 6000' 6015' 6030' 6045' 6060' 6075' 6090' 6105' 6120' 6135' 6150' 6165' 6180' 6195' 6210' 6225' 6240' 6255' 6270' 6285' 6300' 6315' 6330' 6345' 6360' 6375' 6390' 6405' 6420' 6435' 6450' 6465' 6480' 6495' 6510' 6525' 6540' 6555' 6570' 6585' 6600' 6615' 6630' 6645' 6660' 6675' 6690' 6705' 6720' 6735' 6750' 6765' 6780' 6795' 6810' 6825' 6840' 6855' 6870' 6885' 6900' 6915' 6930' 6945' 6960' 6975' 6990' 7005' 7020' 7035' 7050' 7065' 7080' 7095' 7110' 7125' 7140' 7155' 7170' 7185' 7200' 7215' 7230' 7245' 7260' 7275' 7290' 7305' 7320' 7335' 7350' 7365' 7380' 7395' 7410' 7425' 7440' 7455' 7470' 7485' 7500' 7515' 7530' 7545' 7560' 7575' 7590' 7605' 7620' 7635' 7650' 7665' 7680' 7695' 7710' 7725' 7740' 7755' 7770' 7785' 7800' 7815' 7830' 7845' 7860' 7875' 7890' 7905' 7920' 7935' 7950' 7965' 7980' 7995' 8010' 8025' 8040' 8055' 8070' 8085' 8100' 8115' 8130' 8145' 8160' 8175' 8190' 8205' 8220' 8235' 8250' 8265' 8280' 8295' 8310' 8325' 8340' 8355' 8370' 8385' 8400' 8415' 8430' 8445' 8460' 8475' 8490' 8505' 8520' 8535' 8550' 8565' 8580' 8595' 8610' 8625' 8640' 8655' 8670' 8685' 8700' 8715' 8730' 8745' 8760' 8775' 8790' 8805' 8820' 8835' 8850' 8865' 8880' 8895' 8910' 8925' 8940' 8955' 8970' 8985' 9000' 9015' 9030' 9045' 9060' 9075' 9090' 9105' 9120' 9135' 9150' 9165' 9180' 9195' 9210' 9225' 9240' 9255' 9270' 9285' 9300' 9315' 9330' 9345' 9360' 9375' 9390' 9405' 9420' 9435' 9450' 9465' 9480' 9495' 9510' 9525' 9540' 9555' 9570' 9585' 9600' 9615' 9630' 9645' 9660' 9675' 9690' 9705' 9720' 9735' 9750' 9765' 9780' 9795' 9810' 9825' 9840' 9855' 9870' 9885' 9900' 9915' 9930' 9945' 9960' 9975' 9990' 10005' 10020' 10035' 10050' 10065' 10080' 10095' 10110' 10125' 10140' 10155' 10170' 10185' 10200' 10215' 10230' 10245' 10260' 10275' 10290' 10305' 10320' 10335' 10350' 10365' 10380' 10395' 10410' 10425' 10440' 10455' 10470' 10485' 10500' 10515' 10530' 10545' 10560' 10575' 10590' 10605' 10620' 10635' 10650' 10665' 10680' 10695' 10710' 10725' 10740' 10755' 10770' 10785' 10800' 10815' 10830' 10845' 10860' 10875' 10890' 10905' 10920' 10935' 10950' 10965' 10980' 10995' 11010' 11025' 11040' 11055' 11070' 11085' 11100' 11115' 11130' 11145' 11160' 11175' 11190' 11205' 11220' 11235' 11250' 11265' 11280' 11295' 11310' 11325' 11340' 11355' 11370' 11385' 11400' 11415' 11430' 11445' 11460' 11475' 11490' 11505' 11520' 11535' 11550' 11565' 11580' 11595' 11610' 11625' 11640' 11655' 11670' 11685' 11700' 11715' 11730' 11745' 11760' 11775' 11790' 11805' 11820' 11835' 11850' 11865' 11880' 11895' 11910' 11925' 11940' 11955' 11970' 11985' 12000' 12015' 12030' 12045' 12060' 12075' 12090' 12105' 12120' 12135' 12150' 12165' 12180' 12195' 12210' 12225' 12240' 12255' 12270' 12285' 12300' 12315' 12330' 12345' 12360' 12375' 12390' 12405' 12420' 12435' 12450' 12465' 12480' 12495' 12510' 12525' 12540' 12555' 12570' 12585' 12600' 12615' 12630' 12645' 12660' 12675' 12690' 12705' 12720' 12735' 12750' 12765' 12780' 12795' 12810' 12825' 12840' 12855' 12870' 12885' 12900' 12915' 12930' 12945' 12960' 12975' 12990' 13005' 13020' 13035' 13050' 13065' 13080' 13095' 13110' 13125' 13140' 13155' 13170' 13185' 13200' 13215' 13230' 13245' 13260' 13275' 13290' 13305' 13320' 13335' 13350' 13365' 13380' 13395' 13410' 13425' 13440' 13455' 13470' 13485' 13500' 13515' 13530' 13545' 13560' 13575' 13590' 13605' 13620' 13635' 13650' 13665' 13680' 13695' 13710' 13725' 13740' 13755' 13770' 13785' 13800' 13815' 13830' 13845' 13860' 13875' 13890' 13905' 13920' 13935' 13950' 13965' 13980' 13995' 14010' 14025' 14040' 14055' 14070' 14085' 14100' 14115' 14130' 14145' 14160' 14175' 14190' 14205' 14220' 14235' 14250' 14265' 14280' 14295' 14310' 14325' 14340' 14355' 14370' 14385' 14400' 14415' 14430' 14445' 14460' 14475' 14490' 14505' 14520' 14535' 14550' 14565' 14580' 14595' 14610' 14625' 14640' 14655' 14670' 14685' 14700' 14715' 14730' 14745' 14760' 14775' 14790' 14805' 14820' 14835' 14850' 14865' 14880' 14895' 14910' 14925' 14940' 14955' 14970' 14985' 15000' 15015' 15030' 15045' 15060' 15075' 15090' 15105' 15120' 15135' 15150' 15165' 15180' 15195' 15210' 15225' 15240' 15255' 15270' 15285' 15300' 15315' 15330' 15345' 15360' 15375' 15390' 15405' 15420' 15435' 15450' 15465' 15480' 15495' 15510' 15525' 15540' 15555' 15570' 15585' 15600' 15615' 15630' 15645' 15660' 15675' 15690' 15705' 15720' 15735' 15750' 15765' 15780' 15795' 15810' 15825' 15840' 15855' 15870' 15885' 15900' 15915' 15930' 15945' 15960' 15975' 15990' 16005' 16020' 16035' 16050' 16065' 16080' 16095' 16110' 16125' 16140' 16155' 16170' 16185' 16200' 16215' 16230' 16245' 16260' 16275' 16290' 16305' 16320' 16335' 16350' 16365' 16380' 16395' 16410' 16425' 16440' 16455' 16470' 16485' 16500' 16515' 16530' 16545' 16560' 16575' 16590' 16605' 16620' 16635' 16650' 16665' 16680' 16695' 16710' 16725' 16740' 16755' 16770' 16785' 16800' 16815' 16830' 16845' 16860' 16875' 16890' 16905' 16920' 16935' 16950' 16965' 16980' 16995' 17010' 17025' 17040' 17055' 17070' 17085' 17100' 17115' 17130' 17145' 17160' 17175' 17190' 17205' 17220' 17235' 17250' 17265' 17280' 17295' 17310' 17325' 17340' 17355' 17370' 17385' 17400' 17415' 17430' 17445' 17460' 17475' 17490' 17505' 17520' 17535' 17550' 17565' 17580' 17595' 17610' 17625' 17640' 17655' 17670' 17685' 17700' 17715' 17730' 17745' 17760' 17775' 17790' 17805' 17820' 17835' 17850' 17865' 17880' 17895' 17910' 17925' 17940' 17955' 17970' 17985' 18000' 18015' 18030' 18045' 18060' 18075' 18090' 18105' 18120' 18135' 18150' 18165' 18180' 18195' 18210' 18225' 18240' 18255' 18270' 18285' 18300' 18315' 18330' 18345' 18360' 18375' 18390' 18405' 18420' 18435' 18450' 18465' 18480' 18495' 18510' 18525' 18540' 18555' 18570' 18585' 18600' 18615' 18630' 18645' 18660' 18675' 18690' 18705' 18720' 18735' 18750' 18765' 18780' 18795' 18810' 18825' 18840' 18855' 18870' 18885' 18900' 18915' 18930' 18945' 18960' 18975' 18990' 19005' 19020' 19035' 19050' 19065' 19080' 19095' 19110' 19125' 19140' 19155' 19170' 19185' 19200' 19215' 19230' 19245' 19260' 19275' 19290' 19305' 19320' 19335' 19350' 19365' 19380' 19395' 19410' 19425' 19440' 19455' 19470' 19485' 19500' 19515' 19530' 19545' 19560' 19575' 19590' 19605' 19620' 19635' 19650' 19665' 19680' 19695' 19710' 19725' 19740' 19755' 19770' 19785' 19800' 19815' 19830' 19845' 19860' 19875' 19890' 19905' 19920' 19935' 19950' 19965' 19980' 19995' 20010' 20025' 20040' 20055' 20070' 20085' 20100' 20115' 20130' 20145' 20160' 20175' 20190' 20205' 20220' 20235' 20250' 20265' 20280' 20295' 20310' 20325' 20340' 20355' 20370' 20385' 20400' 20415' 20430' 20445' 20460' 20475' 20490' 20505' 20520' 20535' 20550' 20565' 20580' 20595' 20610' 20625' 20640' 20655' 20670' 20685' 20700' 20715' 20730' 20745' 20760' 20775' 20790' 20805' 20820' 20835' 20850' 20865' 20880' 20895' 20910' 20925' 20940' 20955' 20970' 20985' 21000' 21015' 21030' 21045' 21060' 21075' 21090' 21105' 21120' 21135' 21150' 21165' 21180' 21195' 21210' 21225' 21240' 21255' 21270' 21285' 21300' 21315' 21330' 21345' 21360' 21375' 21390' 21405' 21420' 21435' 21450' 21465' 21480' 21495' 21510' 21525' 21540' 21555' 21570' 21585' 21600' 21615' 21630' 21645' 21660' 21675' 21690' 21705' 21720' 21735' 21750' 21765' 21780' 21795' 21810' 21825' 21840' 21855' 21870' 21885' 21900' 21915' 21930' 21945' 21960' 21975' 21990' 22005' 22020' 22035' 22050' 22065' 22080' 22095' 22110' 22125' 22140' 22155' 22170' 22185' 22200' 22215' 22230' 22245' 22260' 22275' 22290' 22305' 22320' 22335' 22350' 22365' 22380' 22395' 22410' 22425' 22440' 22455' 22470' 22485' 22500' 22515' 22530' 22545' 22560' 22575' 22590' 22605' 22620' 22635' 22650' 22665' 22680' 22695' 22710' 22725' 22740' 22755' 22770' 22785' 22800' 22815' 22830' 22845' 22860' 22875' 22890' 22905' 22920' 22935' 22950' 22965' 22980' 22995' 23010' 23025' 23040' 23055' 23070' 23085' 23100' 23115' 23130' 23145' 23160' 23175' 23190' 23205' 23220' 23235' 23250' 23265' 23280' 23295' 23310' 23325' 23340' 23355' 23370' 23385' 23400' 23415' 23430' 23445' 23460' 23475' 23490' 23505' 23520' 23535' 23550' 23565' 23580' 23595' 23610' 23625' 23640' 23655' 23670' 23685' 23700' 23715' 23730' 23745' 23760' 23775' 23790' 23805' 23820' 23835' 23850' 23865' 23880' 23895' 23910' 23925' 23940' 23955' 23970' 23985' 24000' 24015' 24030' 24045' 24060' 24075' 24090' 24105' 24120' 24135' 24150' 24165' 24180' 24195' 24210' 24225' 24240' 24255' 24270' 24285' 24300' 24315' 24330' 24345' 24360' 24375' 24390' 24405' 24420' 24435' 24450' 24465' 24480' 24495' 24510' 24525' 24540' 24555' 24570' 24585' 24600' 24615' 24630' 24645' 24660' 24675' 24690' 24705' 24720' 24735' 24750' 24765' 24780' 24795' 24810' 24825' 24840' 24855' 24870' 24885' 24900' 24915' 24930' 24945' 24960' 24975' 24990' 25005' 25020' 25035' 25050' 25065' 25080' 25095' 25110' 25125' 25140' 25155' 25170' 25185' 25200' 25215' 25230' 25245' 25260' 25275' 25290' 25305' 25320' 25335' 25350' 25365' 25380' 25395' 25410' 25425' 25440' 25455' 25470' 25485' 25500' 25515' 25530' 25545' 25560' 25575' 25590' 25605' 25620' 25635' 25650' 25665' 25680' 25695' 25710' 25725' 25740' 25755' 25770' 25785' 25800' 25815' 25830' 25845' 25860' 25875' 25890' 25905' 25920' 25935' 25950' 25965' 25980' 25995' 26010' 26025' 26040' 26055' 26070' 26085' 26100' 26115' 26130' 26145' 26160' 26175' 26190' 26205' 26220' 26235' 26250' 26265' 26280' 26295' 26310' 26325' 26340' 26355' 26370' 26385' 26400' 26415' 26430' 26445' 26460' 26475' 26490' 26505' 26520' 26535' 26550' 26565' 26580' 26595' 26610' 26625' 26640' 26655' 26670' 26685' 26700' 26715' 26730' 26745' 26760' 26775' 26790' 26805' 26820' 26835' 26850' 26865' 26880' 26895' 26910' 26925' 26940'

## STATEMENT OF EXPENSES

The following is a breakdown of the expenses incurred in carrying out the geochemical survey on the Divide No's 1 - 48 Mineral Claims.

1.	Salaries	\$ 4,202.14
2.	Drafting & Mapping	100.00
3.	Air Transportation	772.00
4.	Camp Expenses	60.00
5.	Field Tools and Hardware	494.63
6.	Assays	5,613.82
7.	Accounting	46.64
8.	Telephone	38.90
9.	Office and Storage rent	60.00
10.	Secretarial Services	60.00
11.	Administrative Travel	218.10
12.	Office Supplies (Printing)	10.75
13.	Freight Charges	7.25
14.	AGS Handling Charge	1,718.83
	<b>TOTAL</b>	<b>\$13,403.06</b>

  
T. D. Wilkinson  
Associated Geological Services Ltd.,  
Manager

LIST OF PERSONS EMPLOYED

<u>Name</u>	<u>Position</u>	<u>Address</u>
T. D. Wilkinson	Mining Technologist	
D. P. Arscott	Geologist	1327 Robson St. Vancouver, B. C.
D. Manyozo	Sampler	4424 West 12th Ave. Vancouver 8 B. C.
A. Mdala	Sampler	4424 West 12th Ave. Vancouver 8 B. C.
P. Fitzgibbon	Sampler	1327 Robson Street, Vancouver 5, B. C.
T. McLeod	Sampler	1490 Palmerston Ave. West Vancouver, B. C.
J. Whitehead	Sampler	205-66th St., Delta, B. C.
G. Sexton	Sampler	3782 West 21st Avenue, Vancouver, B. C.
J. Hamaguchi	Sampler	1475 Tyrol Place, West Vancouver, B. C.

## INTRODUCTION

At the request of Dolmage, Campbell and Associates, consultants for Mt. Nansen Mines Ltd., Associated Geological Services Ltd., carried out a geochemical survey on the Divide No's. 1 - 48 Mineral Claims. The Divide claims are owned by Mt. Nansen Mines Ltd.

## LOCATION AND ACCESS

The Divide Claims are located 28 miles east of Carmacks, Y. T. They can be reached by all weather gravel road to Mt. Nansen Mines Ltd., thence by bombardier northeast across country for a straight-line distance of approximately three miles.

## TOPOGRAPHY AND VEGETATION

The Divide Claims are entirely above timber line, at elevation approximately 5,000 feet, and lie for the most part in a broad valley which drains to the southwest. Slopes are from  $10^{\circ}$  to  $35^{\circ}$ .

## SURVEYING

Figure 1. shows the layout of soil sample stations relative to claim posts and claim boundaries. An East-West baseline was established using Brunton compass and chain. Cross-lines were surveyed with compass and chain every 400 feet along the baseline, north and south to the claim boundaries. Soil sampling stations were established at 100 foot intervals on the cross-lines by placing a picket (building lath) at each point with the grid coordinates written on the picket. The pickets were further marked by tying on a length of fluorescent orange flagging tape.

A total of 57 line miles of soil samples were run in the above manner.

## SAMPLING METHOD

Soil samples were collected at each station from the "A" horizon (i. e. the black humus material underlying the vegetation) by scraping away the vegetation with the picket to be emplaced at that station. Approximately one-half cupful of material was collected from each sample point, and placed in a standard high wet strength brown paper sample bag. The samples were shipped to Vancouver, B. C. and were assayed by Bondar-Clegg & Co. for parts per million Silver content and for parts per million arsenic content. The results were plotted

on Figure 1, which accompanies this report. The total number of samples collected and assayed was 2934.

#### ASSAYING METHOD

The samples were dried and sieved. Using a portion of the -80 mesh fraction of the sample, the p. p. m. silver content was established using  $\text{HNO}_3$ -HCl extraction and an atomic absorption unit. The p. p. m. arsenic content was determined using KOH fusion and colorometric analysis.

#### INTERPRETATION OF RESULTS

The following table shows a statistical breakdown of the assay results for Silver and Arsenic. The range in parts per million are compared to the number of samples occurring in that range. Samples which are anomalous for Silver are those having parts per million values 1.6 ppm Ag. and over. Of the 2934 samples collected, 46 are in this range (1.5%). Similarly, samples which are anomalous for Arsenic are those having parts per million values 16 ppm As and over. Thirty-six of the 2934 samples, or 1.2%, were in this range.

TABLE 1

SILVER		ARSENIC	
p. p. m. Range	No: of Samples	p. p. m. Range	No: of Samples
NO - 0.1	139	NO- 5	2555
0.2 - 0.3	235	6 - 10	245
0.4 - 0.5	816	11 - 15	98
0.6 - 0.7	690	16 - 20	17
0.8 - 0.9	593	21 - 25	24
1.0 - 1.1	310	26 - 30	1
1.2 - 1.3	54	31 - 35	0
1.4 - 1.5	51	36 - 40	3
1.6 - 1.7	25	41 - 45	1
1.8 - 1.9	8		
2.0 - 2.1	7		
2.2 - 2.3	3		
2.4 - 2.5	3		
		Total	2934
Total	2934		

1.5%  
of total1.2%  
of Total

## DISCUSSION OF RESULTS

The anomalous areas for Silver and Arsenic are shown on Figure I. These areas have been transferred to Figure II, for comparison with the local geology, and topography. The anomalous areas are almost without exception entirely devoid of outcrops, so that no information is yet available as to the geological environment in the vicinity of the anomalies. No mineralized veins were found in the area where previous bulldozer trenching had been carried out. Therefore, no correlation can be made between mineralization, if any, and geochemical anomalies.

The parts per million values for both Silver and Arsenic are generally extremely low, compared with anomalous values in the vicinity of Mt. Nansen Mines. However, it is significant to note that only 1 1/2% or 46 samples out of a total of nearly three thousand samples had parts per million values for Silver of 1.6 or over. These few samples occur in groups which outline a definite East-West anomalous trend across the property, and are supported by the anomalous Arsenic values.

It is worthwhile to consider that other elements, such as lead and zinc, may be good indicators of overburden-covered veins. The pulps from all the samples which were assayed for Silver and Arsenic are retained for two years by Bondar-Clegg & Co. The most significant anomalies

on the Divide claims could easily be tested for ppm values in lead and zinc at very low cost, to further outline the anomalous zone.

The north-west end of the claim group contains the strongest geochemical response. This anomalous area is on the nose of a knoll which could easily be trenched by a bulldozer.

### CONCLUSIONS

The geochemical survey on the Divide claims has provided several areas which are anomalous for Silver and/or Arsenic. The most attractive of these are the areas where there are coincident Silver/Arsenic anomalies, specifically: (Refer to Figure 1.)

- 1) Between 7E and 17E, from 30N to 34N
- 2) Between 2E and 9E, from 19S to 21S

The portion of the Divide claims which has been explored by bulldozer trenching is of little interest, since only two erratic and isolated samples were anomalous for Arsenic- no Silver anomalies occur in this area.

There is a general East-West trend to the anomalous silver values, which conforms to the drainage directions, and may be the expression of a

structural trend. There is little or no geological information available in the anomalous areas, hence no correlation can as yet be established between geochemical anomalies and mineralization.

### RECOMMENDATIONS

1. Have parts per million tests for Lead and Zinc run on the pulps of the samples now being retained by Bondar-Clegg & Co. on the samples in the area between 0E and 24E and from 20N to 47N.
  
2. Trench with a bulldozer across zones where coincident Silver/Arsenic anomalies occur, as follows:
  - A Trench No. 1 - on line 8E from 28N to 36N  
Trench No. 2 - line 12E from 28N to 36N  
Trench No. 3 - line 16E from 28N to 36N
  
  - B Trench No. 4 - line 4E from 18S to 24S  
Trench No. 5 - line 8E from 18S to 26S

STATEMENT OF QUALIFICATION

I, T. D. Wilkinson, with business address in Vancouver, British Columbia, do hereby certify that:

1. I am a mining technologist
2. I am a graduate of the British Columbia Institute of Technology (Dipl. Tech. 1966)
3. From 1957 until 1968 I have been actively engaged in mining and mining exploration in British Columbia, and have worked as Party Chief and Project Manager for a number of companies, including Phelps Dodge Corporation (1962-1963), Dolmage, Mason and Stewart (1964), Native Mines Ltd. (1965-1966) and Associated Geological Services 1967. I am now President and General Manager of Associated Geological Services Ltd.
4. The geochemical survey on the Divide Claims was carried out under my direction, with full time field supervision provided by D. P. Arscott, M. Sc., Geology, McGill University.

Respectfully submitted,



T. D. Wilkinson, Dipl. Tech.

Vancouver, British Columbia  
November 25, 1968

EVIDENCE OF EXPENDITURES

THE FOLLOWING ARE THE INVOICES RELATING TO THE GEO-  
CHEMICAL SURVEY CARRIED OUT ON THE DIVIDE NO'S 1 - 48  
MINERAL CLAIMS.

AFFIDAVIT

I, T. D. WILKINSON, MINING TECHNOLOGIST, of  
202-475 Howe Street, Vancouver 1, B. C., agent for  
Mt. NANSEN MINES LTD., do hereby make oath and  
say, that to the best of my knowledge and belief the  
statement of costs as presented is a true and accurate  
representation of expenditures, to be applied as assess-  
ment on the DIVIDE NO's 1 - 48 MINERAL CLAIMS.

SWORN AND SUBSCRIBED TO  
AT VANCOUVER, B. C. this

14<sup>th</sup> day of *May*, 1969



T. D. Wilkinson

A Commissioner of Oaths for the  
Yukon Territory

Dolmage Campbell & Associates Ltd.,  
4800, 900 West Hastings Street,  
VANCOUVER 1, B.C.

INVOICE NO. 123

July 15, 1968

RE: MT. NANSEN

Period July 13 to 15th, 1968

Salaries	607.12
O.I.C.	2.74
Pension Plan	7.52
48 Holiday Pay	24.28
48 U.C.B.	25.80 ✓
Secretarial	10.00 ✓
Crane Storage	30.00 (April, May, June)

707.46

15%

106.11

\$813.57

Rental Camping Equipment  
July 14 to August 13th, 1968

225.00

\$1,038.57  
=====

*Ad*  
*7/19/68*

VANCOUVER

Stenographic &  
Office  
Services Ltd.

100-535 THURLOW ST.  
688-4745

1628-355 BURRARD ST.  
VANCOUVER 1, B.C.  
688-5235

Associated Geological Services Ltd.,  
#100, 535 Thurlow Street,  
VANCOUVER 5, B.C.

INVOICE NO. 154

June 30, 1968

RE: MT. NANSEN

To portion of stenographic services  
for the month of June, 1968

\$10.00  
=====

R

OK #677  
7/6/68

Associated Geological Services Ltd.  
 535 Thurlow Street  
 Vancouver, B.C.

Associated Geological Services,  
 535 Thurlow Street,  
 Vancouver, B.C.

RECEIVED  
 JUL 2 1968

Aug 29, 1967

760 Beatty St.

Rate: 20.00

C 5803

DATE	NO.	DESCRIPTION	CHARGES	CREDITS	BALANCE
BROUGHT FORWARD →					
	2001	CART INV/STG TO SEPT 30/67	2 937		2 937
		CASH		2 937	0 00
		STG TO OCT 29/67	2 000		2 000
		CASH		2 000	0 00
		STG TO NOV 29/67	2 000		2 000
	1374	SHIP INV TRANS FROM SHIP A/C DATED AUGUST 9/67	1 491		3 491
		CASH		3 491	0 00
		STG TO DEC 29/67	2 000		2 000
		STG TO 29 JAN 68	2 000		4 000
		STG TO FEB 29/68	2 000		6 000
	3749	SHIP INV	1 665		7 665
		STG TO MAR 29/68	2 000		9 665
		CASH		6 000	3 665
		CASH		3 665	0 00
		STG TO APR 29/68	2 000		2 000
		STG TO MAY 29/68	2 000		4 000
		STG TO JUNE 29/68	2 000		6 000
		CASH		6 000	0 00
		STG TO JULY 29/68	2 000		2 000

1/2 Arctic  
 1/2 Mt. Rowan

OK  
 TD  
 CR 1/685  
 7/8/68  
 B

CRONE  
 Storage Company  
 VANCOUVER, B.C.

8.0X11.0-1.5  
 13114

SEE-FAX BY SEELEY

No: 125

Dolmage Campbell & Associates Ltd.,  
Ste 800 Canada Bank Building,  
900 West Hastings Street,  
VANCOUVER 1, B. C.

August 1, 1968

RE: MR. NANSEN

Period July 16 to 31st, 1968

Salaries	2,052.04
Pension Plan	27.82
V. E. C.	13.70
4% Holiday Pay	32.03
4 1/4% W. C. D.	87.21

Expenses	
T. D. Wilkinson	<u>37.74</u>

2,300.59

15%	<u>345.08</u>
-----	---------------

\$2,645.67

=====

pd

Dolmage Campbell & Associates  
808 Canada Bank Building,  
900 W Hastings Street,  
Vancouver 1, B. C.

INVOICE NO. 128

August 22, 1968

MT. NANSEN

Period August 1 to 15

Salaries	1,052.45
U. I. C.	7.69
4% H. P.	42.09
4 1/4%	42.36
Pension Plan	15.25

Expenses:

C. P. A. pro-rated	142.00
Sunset Motel	60.00
Crane	10.00
Accounting	46.64
CPA	166.00
Expenses T. D. W.	20.85
D. Arscott	47.81
B. C. Industris	5.04

---

1,653.18

15%

---

249.72

\$1,906.90

=====

*R*

**Canadian Pacific AIR LINES, LIMITED**

ACCOUNTING DEPARTMENT  
VANCOUVER AIRPORT, B.C.

ASSOCIATED GEOLOGICAL SERVICES LTD  
#100 535 THURLOW  
VANCOUVER 5 B C

PLEASE QUOTE YOUR ACCOUNT NUMBER WHEN CORRESPONDING	
PERIOD ENDING	ACCT. NUMBER
AUG 2 68U	500

PLEASE RETURN ONE COPY WITH YOUR REMITTANCE TO

TREASURY DEPARTMENT  
CANADIAN PACIFIC AIR LINES, LIMITED  
VANCOUVER AIRPORT, B.C.

PARTICULARS	DATE	REFERENCE	CHARGES	CREDITS	BALANCE
				BAL. FWD.	498.00
3 157 572	AUG 2 68	80,950	83.00		
3 157 571	AUG 2 68	80,950	83.00		664.00 S
PLEASE RETURN ONE COPY OF THIS STATEMENT WITH YOUR REMITTANCE					
		Acc. fare pro rated	213 - ARCTIC		
			142 PIT NANSEN		
			85.80 ADANAC		
			57.20 COIN CANYON		

OK TDW

Divide as follows on accompanying sheet.

T.D.W.

B

OK # 746  
8/22/68

PAY # 498

PAYABLE 7 DAYS AFTER PRESENTATION.  
REFERENCE DOCUMENTS ATTACHED.

**Canadian Pacific AIR LINES, LIMITED**  
VANCOUVER AIRPORT, B.C.



Associated Geological Services Ltd.,  
535 Thurlow Street,  
Vancouver, B.C.

Associated Geological Services,  
535 Thurlow Street,  
Vancouver, B.C.

August 30, 1967

760 Beatty St.

Rate: 20.00

C 5803

DATE	NO.	DESCRIPTION	CHARGES	CREDITS	BALANCE
BROUGHT FORWARD →					
APR 67	2601	CART INV/STG TO SEPT 30/67	2 9.3 7		2 9.3 7
SEP 27 67		CASH		2 0.0 7	0 0
SEP 29 67		STG TO OCT 29/67	2 0.0 0		2 0.0 0
OCT 25 67		CASH		2 0.0 0	0 0
OCT 26 67		STG TO NOV 29/67	2 0.0 0		2 0.0 0
OCT 31 67	1394	SHIP INV TRANS FROM SHIP A/C DATED AUGUST 9/67	1 4.9 1		3 4.9 1
NOV 10 67		CASH		3 4.9 1	0 0
NOV 30 67		STG TO DEC 29/67	2 0.0 0		2 0.0 0
DEC 29 67		STG TO 29 JAN 68	2 0.0 0		4 0.0 0
JAN 29 68		STG TO FEB 29/68	2 0.0 0		6 0.0 0
FEB 13 68	3749	SHP INV	1 6.6 5		7 6.6 5
FEB 14 68		STG TO MAR 29/68	2 0.0 0		9 6.6 5
FEB 19 68		CASH		6 0.0 0	3 6.6 5
FEB 11 68		CASH		3 6.6 5	0 0
MAR 25 68		STG TO APR 29/68	2 0.0 0		2 0.0 0
APR 18 68		STG TO MAY 29/68	2 0.0 0		4 0.0 0
MAY 27 68		STG TO JUNE 29/68	2 0.0 0		6 0.0 0
NOV 20 68		CASH		6 0.0 0	0 0
NOV 25 68		STG TO JULY 29/68	2 0.0 0		2 0.0 0
JUL 07 68		CASH		2 0.0 0	0 0
JUL 31 68		STG TO AUG 29/68	2 0.0 0		2 0.0 0

1/2 Polynaga Capt - Arctic  
1/2 " " M.H. Lauer  
1/2 " " (B)

OK H 751  
8/22/68

VANCOUVER

Stenographic &  
Office  
Services Ltd.

100-535 THURLOW ST.  
688-4745

1628-355 BURRARD ST.  
VANCOUVER 1, B.C.  
688-5235

Associated Geological Services Ltd  
535 Thurlow Street,  
Vancouver 5, B.C.

INVOICE NO. 182

Bookkeeping services, payroll etc.,  
for the month of July

135.00

Postage

2.40

Xeroxing

2.40

5% tax on xerox

12

\$139.92

=====

1/3 Arctic 46.64  
1/3 Mt Ransow  
1/3 Redanac

ASSOCIATED GEOLOGICAL SERVICES LTD.

EXPENSE ACCOUNT

Period 1 - 5 Aug 1968  
 Name D. Arscott  
 Project No. Mt. Nansen Mines, VT  
 Client D Campbell

Date	Item	Distribution	Amount
	Miscellaneous supplies (D.&A)		
			1.05
			4.95
			3.05
			<u>1.08</u>
			10.13
5 Aug	Food		6.15
" "	"		1.90
" "	"		3.35
" "	Gas		7.95
" "	Airline Limousine		1.50
" "	Food		1.25
" "	"		9.90
" "	"		6.35
" "	"		7.30
" "	"		7.25
" "	"		4.20
" "	"		2.15
" "	"		2.05
" "	Gas		7.77
28 July	Tire (Receipt to Yukon Motors)		3.50
" "	303 Ammunition (No receipt)		15.00
25 "	Meals (No receipt)		6.00
5 Aug.	Gas (For S/W, receipts to Yukon Motors)		8.00
	<b>Total</b>		<u>111.70</u>
	<b>Balance</b>		

OK  
 9/4/68  
 1782

Signature D. Arscott

OK  
 TO  
 MT. NANSEN

Reimburse this amt. ↑

Dolmage Campbell & Associates Ltd  
#308 Canada Bank Building,  
909 W Hastings Street,  
Vancouver 5, B.C.

INVOICE NO. 138

S August 30, 1968

RE: MT. NANSEN

Period August 16 to 31st, 1968

Salaries	23.00 /
Yukon Motors	180.00 /
Expenses D. Arscott	111.70 /
Yukon Motors	6.74 /
Yukon Motors	82.80 /
Bondar Clegg	1003.55
C. P. A.	<u>83.00 /</u>

1489.79

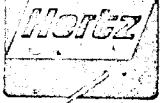
Add 15%

223.46

34  
\$1,713.25

=====

*Ad*



TO: Associated Commercial Services  
100-25 FURLOW ST  
MORRISTOWN, N.J.

MT NANSEN 180<sup>00</sup>  
BORNING 220

CAR TO BE CHECKED IN AT <u>POINT CAROLINA</u>	STA. NO.	VEHICLE NO.
CAR RENTED AT (CITY)	AREA & LOCATION NO.	
RENTED BY	COLLISION DAMAGE WAIVER AUTHORIZATION	

AGE	27
CAR LIC. NO.	
CAR MAKE	PROV.
MILEAGE IN	
MILEAGE OUT	
MILES DRIVEN	
MILEAGE DETERMINED BY READING FACTORY INSTALLED ODOMETER	
DEPOSIT \$	
CAR WILL BE RETURNED BY DAY / MO. / YEAR	

CAR CHECKED IN AT (CITY)	STA. NO.
TIME IN	
TIME OUT	

HRS. @	
DAYS @	
WKS. @	
MILES @	
SUB TOTAL	
SUB TOTAL	
INTERCITY FEE	
TOT. RENTAL OR MINIMUM CHG.	
TAX	
COLLIS. DAMAGE WAIVER	
TOTAL CHARGES	
LESS: GAS-REPRS.	
NET DUE	600 <sup>00</sup>

FOR HERTZ USE ONLY

DETACH HERE RENTAL AGREEMENT C-240888

300<sup>00</sup> of amount was paid by customer  
250<sup>00</sup> Deposited into

PUB. REP. TO DAILY REPORT	
NET DUE CANADIAN \$	
NET DUE IN CURRENCY	600 <sup>00</sup>
PAID BY (V)	CASH CHECK CHARGE

CUSTOMER IS LIABLE FOR ALL PARKING & TRAFFIC VIOLATIONS SHOW RENTAL AGREEMENT NO. ON ALL CORRESPONDENCE



R/A COMPUTED BY (LAST NAME) J. FORDYCE

Get there and back - SAFELY!

RENTING STATION COPY

OK?  
J  
20.  
3/600

6, 1964

ASSOCIATED GEOLOGICAL SERVICES LTD.

EXPENSE ACCOUNT

Period 1 - 5 Aug 1968  
 Name D. Arscott  
 Project No. Mt. Nansen Mines, VT  
 Client D. Campbell

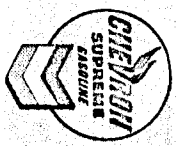
Date	Item	Distribution	Amount
	Miscellaneous supplies (D&A)		
			1.05
			4.95
			3.05
			1.08
			10.13
5 Aug	Food		10.13
" "	"		6.15
" "	"		1.90
" "	"		3.35
" "	Gas		7.95
" "	Airline Limousine		1.50
" "	Food		1.25
" "	"		9.90
" "	"		6.35
" "	"		7.30
" "	"		7.25
" "	"		4.20
" "	"		2.15
" "	"		2.05
" "	Gas		7.77
28 July	Tire. (Receipt to Yukon Motors)		3.50
" "	303 Ammunition (No receipt)		15.00
25 "	Meals (No receipt)		6.00
5 Aug.	Gas (For S/W, receipts to Yukon Motors)		8.00
	<b>Total</b>		<b>111.70</b>
	<b>Balance</b>		

OK # 782  
 9/4/68

Signature D. Arscott

OK  
 JOW  
 MT. NANSEN

Reimburse this amt. ↑



# YUKON MOTORS LIMITED

COMPLETE CAR & TRUCK REPAIR SERVICE

BOX 998 WHITEHORSE, YUKON

PHONE 7-2505

SOLD TO Keith - CIP DATE July 14 1968

ADDRESS 71756

QUAN.	PART NUMBER	DESCRIPTION	PRICE	TOTAL	AMOUNT
27	Gals.	Gasoline		2	16
	Qts.	Oil			
<i>Change to Min. Technical Service</i>					
<i>Joe Thompson</i>					
<i>Whitehorse</i>					
<i>July 14 1968</i>					
<i>71756</i>					

C 30773

Finport O The Whitehorse Star, Whitehorse, Yukon



# YUKON MOTORS LIMITED

COMPLETE CAR & TRUCK REPAIR SERVICE

BOX 998 WHITEHORSE, YUKON

PHONE 7-2505

SOLD TO Platy Chance DATE July 14 1968

ADDRESS 71756

QUAN.	PART NUMBER	DESCRIPTION	PRICE	TOTAL	AMOUNT
27	Gals.	Gasoline		4	58
	Qts.	Oil			
<i>Change to Max. Technical Service</i>					
<i>Platy Chance</i>					
<i>Whitehorse</i>					
<i>July 14 1968</i>					
<i>71756</i>					

C 30763

Finport O The Whitehorse Star, Whitehorse, Yukon



**YUKON MOTOR LTD.**  
 BOX 998, PHONE 687-2503  
 WHITBORO - YUKON - CANADA

MAY WE RESERVE A CAR FOR YOU AT YOUR NEXT DESTINATION?

CAR CHECKED IN AT (CITY) STA. NO.  
 TIME IN 11:00 AM Aug 9/68  
 TIME OUT 3:15 PM Aug 3/68

Associated Ecological Services  
 535 Thetford St  
 Vancouver 5, B.C.

AGE  
 CAR LIC. NO. 4656 Yukon PROV.  
 CAR MAKE Pontiac BODY STYLE Slwagon

HRS @ 2.00  
 DAYS 6 @ 14.00 84.00  
 WKS. @

CHARGE CARD HTZ AMEX CB DIN ATC OTHER:

MILEAGE IN 3155  
 MILEAGE OUT 2109

MILES DRIVEN 1046

MILES @ 15 156.90

No. DRIVER'S LICENSE NO. 882652 PROV. BC EXPIRES 1/70

MILEAGE DETERMINED BY READING FACTORY INSTALLED ODOMETER

SUB TOTAL

CAR TO BE CHECKED IN AT Whitehorse STA. NO. VEHICLE NO.

DEPOSIT \$ CAR WILL BE RETURNED BY DAY NO. YEAR TYPED

SUB TOTAL 240.90

CAR RENTED AT (CITY) Whitehorse AREA & LOCATION NO.

OWNING CITY Whitehorse

INTERCITY FEE

I HAVE READ THE TERMS & CONDITIONS ON PAGE 1 (OTHER SIDE) AND PAGE 2 OF THIS RENTAL AGREEMENT AND AGREE THERETO.

COLLISION DAMAGE WAIVER  
 BY HIS INITIAL, Customer agrees to pay a fee stipulated below, and Lessor agrees to waive all claims against customer for the first \$100.00 of damage by collision to vehicle while it is used, operated or driven in conformity with this Rental Agreement, but notwithstanding payment of said fee. Customer shall be fully liable for all collision damage if vehicle is used, operated or driven in violation of any of the provisions of this Rental Agreement.  
 INITIAL HERE \$50.00 1.50 per day or fraction thereof; \$ 7.50 per week

TOT. RENTAL OR MINIMUM CHG.

CUSTOMER: J. D. White

TAX COLLIS. DAMAGE WAIVER 7.50

LOCAL ADDRESS PHONE NO. R/A PREPARED BY (LAST NAME) Clarke

TOTAL CHARGES

HOME ADDRESS

CASH REFUND GAS OIL REPAIRS \$ DEPOSIT \$

LESS: GAS-REPRS. NET DUE 248.40

FOR HERTZ USE ONLY

RENTAL AGREEMENT C-240913  
 82.80  
 82.80  
 82.80

POSTED TO DAILY REPORT

NET DUE CANADIAN \$

NET DUE IN CURRENCY 248.40

PAID BY (V) CASH CHECK CHARGE X

CUSTOMER IS LIABLE FOR ALL PARKING & TRAFFIC VIOLATIONS SHOW RENTAL AGREEMENT NO. ON ALL CORRESPONDENCE



R/A COMPUTED BY (LAST NAME)

Get there and back - SAFELY!

CENTRAL OFFICE COPY.

82.80  
 3 / 248.40

3 - Aug 9/68

T-



BONDAR-CLEGG & COMPANY LTD.

1481 MICHAEL STREET, OTTAWA 8, ONTARIO - 745-4114  
MAILING ADDRESS: BOX 3382, STATION "C", OTTAWA 3

*OK DW  
Mr. Name  
Dolnicz - Campbell  
geologists • geochemists • analysts*

SERVICES RENDERED TO  
  
Associated Geological Services,  
#100-535 Thurlow Street,  
VANCOUVER, B. C.

INVOICE No. 1091

TERMS: NET 30 DAYS

OUR REPORT NO.	YOUR SAMPLE NO.	DATE INVOICED	
28-142	Grid	28/8/68	
QUANTITY	DESCRIPTION	AMOUNT	TOTAL
541	Ag, As analysis plus sample prep. @ \$2.65 per	1,433.65	
	Less: 30% contract discount	430.10	
		<del>1,003.55</del>	
	<b>B</b>	<i>OK # 7619 9/4/68</i>	<i>1124 30</i>
			\$1,003.55

"Fast, accurate and efficient analysis at reasonable prices"

B-5238-AKING

INVOICE

ACCOUNTING DEPARTMENT  
VANCOUVER AIRPORT, B.C.

ASSOCIATED GEOLOGICAL SERVICES LTD  
#100 535 THURLOW  
VANCOUVER 5 B C

PLEASE QUOTE YOUR ACCOUNT NUMBER WHEN CORRESPONDING	
PERIOD ENDING	ACCT. NUMBER
AUG 9 68U	500

TREASURY DEPARTMENT  
CANADIAN PACIFIC AIR LINES, LIMITED  
VANCOUVER AIRPORT, B.C.

PLEASE RETURN ONE COPY WITH YOUR REMITTANCE TO

PARTICULARS	DATE	REFERENCE	CHARGES	CREDITS	BALANCE
				BAL. FWD.	
					664.00
148 724	AUG 9 68	81,117	83.00		
8 148 725	AUG 9 68	81,117	83.00		830.00
3 148726	AUG 23 68		34.00		864.00

*Handwritten notes:*  
House  
Balance  
OK  
TOW

*Handwritten notes:*  
9/2/68

TURN OVER TO STATEMENT  
YOUR REMITTANCE

PAYABLE 7 DAYS  
AFTER PRESENTATION.  
REFERENCE DOCUMENTS ATTACHED.

**Canadian Pacific AIR LINES, LIMITED**  
VANCOUVER AIRPORT, B.C.





BONDAR-CLEGG & COMPANY LTD.

geologists • geochemists • analysts

1481 MICHAEL STREET, OTTAWA 8, ONTARIO - 745-4114  
MAILING ADDRESS: BOX 3382, STATION "C", OTTAWA 3

SERVICES RENDERED TO

Associated Geological Services  
#100-535 Thurlow Street,  
Vancouver, B. C.

INVOICE No. 1117

*M. Manson*

TERMS: NET 30 DAYS

OUR REPORT NO.	YOUR SAMPLE NO.	DATE INVOICED	
28-168	<del>XXXXXXXXXX</del>	September 17, 1968.	
QUANTITY	DESCRIPTION	AMOUNT	TOTAL
1659	Ag analysis @ \$1.00 per	\$1,659.00	
1659	As analysis @ \$1.50 per	2,488.50	
1659	Sample preparations @ \$0.15 per	248.85	
		<u>\$4,396.30</u>	
	Less: 30% contract disc.	<u>1,318.91</u>	
		\$3,077.44	\$3,077.44
	Express charges	86.94	
			<u>\$3,164.38</u>

*OKH  
827  
9/20/68*

*B*

"Fast, accurate and efficient analysis at reasonable prices"

0-5232-AKING

INVOICE

VANCOUVER

**S**tenographic &  
**O**ffice  
**S**ervices Ltd.

100-535 THURLOW ST.  
688-4745

1628-355 BARRARD ST.  
VANCOUVER 1, B.C.  
688-5235

Associated Geological Services Ltd.  
#100, 535 Thurlow Street,  
Vancouver 5, B. C.

INVOICE NO. 275

Stenographic services for the month of  
September, 1968

\$203.00

Postage

3.74

\$206.74

MK Mansen	\$ 15
Adanac	45
Slocam	40
hain	40
National	% 50
Amswinck	\$ 10
J Mc Intyre	6.74

OK #805

VANCOUVER

Stenographic &  
Office  
Services Ltd.

100-535 THURLOW ST.  
688-4745

1628-355 BURRARD ST.  
VANCOUVER 1, B.C.  
688-5235

Associated Geological Services Ltd.  
#100, 535 Thurlow Street,  
Vancouver 5, B. C.

*NB Also Invoice No 253  
to Sheila Aug 26 - 4.00*

INVOICE NO. 253

August 30, 1968

Secretarial Services for the month of  
August, 1968 including xeroxing, postage  
bookkeeping, general routine etc.,

\$180.81

=====

*CV # 803. 9/23/68.*

*Adams — 60.00  
Mr. Hansen . 45.00  
Arctic . 60.00  
National Michel — 15.81*

*Invoice # 5*

190	3.42
187	1.05
234	167.30
257	3.56
260	1.68
268	4.00
<del>253</del>	<u>180.81</u>



ACCOUNTING DEPARTMENT  
VANCOUVER AIRPORT, B.C.

ASSOCIATED GEOLOGICAL SERVICES LTD  
#100-535 THURLOW  
VANCOUVER 5 B.C.

PLEASE QUOTE YOUR ACCOUNT NUMBER WHEN CORRESPONDING		
PERIOD ENDING	ACCT. NUMBER	
SEP 6 68	U	500

PLEASE RETURN ONE COPY WITH YOUR REMITTANCE TO

TREASURY DEPARTMENT  
CANADIAN PACIFIC AIR LINES, LIMITED  
VANCOUVER AIRPORT, B.C.

PARTICULARS	DATE	REFERENCE	CHARGES	CREDITS	BALANCE
				BAL. FWD.	864.00
8 157573	SEP 6 68	81,222	83.00	} distributed to various	1,117.00
8 157574	SEP 6 68	81,222	83.00		
8 157575	SEP 6 68	81,222	87.00		
			<i>Mr Nansen, Adana, Poin copies according to some distribution procedure within previously</i> <i>253. 20W</i>		
<i>Pr rated</i>	<i>Mr Nansen</i>	<i>381</i>			
	<i>Adana C.</i>	<i>191</i>			
	<i>Poin</i>	<i>179</i>			
		<i>751</i>			

*12. 107. 4853*

*CK 4837 9/30/68*

PAYABLE 7 DAYS AFTER PRESENTATION.  
REFERENCE DOCUMENTS ATTACHED.

Canadian Pacific AIR LINES, LIMITED  
VANCOUVER AIRPORT, B.C.

Associated Geological Services Ltd.  
5 Thurlow Street  
Vancouver, B.C.

Associated Geological Services,  
535 Thurlow Street,  
Vancouver, B.C.

August 30, 1967

760 Beatty St.

Rate: 20.00

C 5803

DATE	NO.	DESCRIPTION	CHARGES	CREDITS	BALANCE
BROUGHT FORWARD →					
APR 67	2601	CART INV/STG TO SEPT 30/67	2937		2937
SEP 27 67		CASH		2000	937
SEP 27 67		STG TO OCT 29/67	2000		2937
OCT 25 67		CASH		2000	937
OCT 26 67		STG TO NOV 29/67	2000		2937
OCT 31 67	1394	SHIP INV TRANS FROM SHIP A/C DATED AUGUST 9/67	1491		3491
NOV 17 67		CASH		3491	937
NOV 30 67		STG TO DEC 29/67	2000		2937
DEC 27 67		STG TO 29 JAN 68	2000		4937
JAN 29 68		STG TO FEB 29/68	2000		6937
FEB 13 68	3749	SHIP INV	1665		7665
FEB 29 68		STG TO MAR 29/68	2000		9665
FEB 19 68		CASH		6000	3665
FEB 11 68		CASH		3665	937
MAR 25 68		STG TO APR 29/68	2000		2937
APR 18 68		STG TO MAY 29/68	2000		4937
MAY 27 68		STG TO JUNE 29/68	2000		6937
JUN 27 68		CASH		6000	937
JUN 25 68		STG TO JULY 29/68	2000		2937
JUL 09 68		CASH		2000	937
JUL 31 68		STG TO AUG 29/68	2000		2937
AUG 30 68		STG TO SEPT 29/68	2000		<del>4937</del> 2000

*Aug. No. of Pd ?? Yes 8/23/68 \$751*  
*Spt. - 1/2 arctic*  
*1/2 Mt. Harney*

*CK # 832*  
*9/30/68*





TO: ASSOC GEOLOGICAL SERVICES  
535 THURLOW ST.,  
VANCOUVER B.C.

DATE 10 11 68

PLEASE REMIT TO

3885 KITCHENER  
N BURNABY B C

YEAR	MO.	DAY	PRO BILL	AMOUNT
68	8	23	1,078.52	287.5 287.5*
			Arctic 1/4	
			H.T. Kamin 1/4	
			Adanac 1/4	
			C.S.N. Canyon 1/4	
			OK IDW	
			OK #782	
			9/20/68	

PIECES OF EQUIPMENT MUST BE NOTED

PERSON RECEIVING GOODS SHALL SIGN HIS NAME IN FIELD IN SPACE PROVIDED.

WE APPRECIATE YOUR BUSINESS





**BONDAR-CLEGG & COMPANY LTD.**

geologists • geochemists • analysts

1481 MICHAEL STREET, OTTAWA 8, ONTARIO - 745-4114  
MAILING ADDRESS: BOX 3382, STATION "C", OTTAWA 3

SERVICES RENDERED TO

T. D. Wilkinson,  
Associated Geological Services,  
100-535 Thurlow Street,  
Vancouver, B. C.

INVOICE No. 1136

*OK T D W*  
*Damage - Complete*  
*M. H. Rowan*

TERMS: NET 30 DAYS

OUR REPORT NO. 28-182	YOUR SAMPLE NO. "Adanao"	DATE INVOICED September 27, 1968.
--------------------------	-----------------------------	--------------------------------------

QUANTITY	DESCRIPTION	AMOUNT	TOTAL
741	Ag & As analysis plus sample prep. @ \$2.65 per	\$1,953.65	
	Less: 30% contract disc.	<u>589.10</u>	
		\$1,374.55	
	Plus: express charges CPA	<u>71.34</u>	
		\$1,445.89	

"Fast, accurate and efficient analysis at reasonable prices"

8-5232-AKING

**INVOICE**

Associated Geological Services,  
535 Thurlow Street,  
Vancouver, B.C.

Associated Geological  
Services Ltd.,  
535 Thurlow Street,  
Vancouver, B.C.

August 30, 1967

760 Beatty St.

Rate: 20.00

C 5803

DATE	NO.	DESCRIPTION	CHARGES	CREDITS	BALANCE
BROUGHT FORWARD →					
APR 27 67	2601	CART IWN/STG TO SEPT 30/67	29.37		29.37
SEP 27 67		CASH			0.00
SEP 29 67		STG TO OCT 29/67	20.00		20.00
OCT 25 67		CASH			0.00
OCT 26 67		STG TO NOV 29/67	20.00		20.00
	1394	SHIP INV TRANS FROM SHIP A/C DATED AUGUST 9/67	149.1		349.1
OCT 31 67		CASH			0.00
NOV 10 67		STG TO DEC 9/67	20.00		20.00
NOV 30 67		STG TO 29 JAN 68	20.00		40.00
DEC 27 67		STG TO FEB 29/68	20.00		60.00
JAN 29 68	3749	SHIP INV	166.5		76.65
FEB 9 68		STG TO MAR 29/68	20.00		96.65
FEB 19 68		CASH		60.00	36.65
FEB 21 68		CASH		36.65	0.00
MAR 25 68		STG TO APR 29/68	20.00		20.00
APR 18 68		STG TO MAY 29/68	20.00		40.00
MAY 27 68		STG TO JUNE 29/68	20.00		60.00
JUN 20 68		CASH		60.00	0.00
JUN 25 68		STG TO JULY 29/68	20.00		20.00
JUL 09 68		CASH		20.00	0.00
JUL 31 68		STG TO AUG 29/68	20.00		20.00
AUG 30 68		STG TO SEPT 29/68	20.00		<del>40.00</del> 20.00

*Aug. 70 + Pd ?? yes 8/23/68 # 751*  
*Sept. - 1/2 Arctic*  
*1/2 Mt. Harney*

*CK # 832*  
*9/30/68*





*Deery's* of Vancouver Ltd.

620 BURRARD STREET  
VANCOUVER 1, B.C.

Pick-Up Service  
and  
Switchboard  
683-2181

RECEIVED BY <i>M-3</i>	TIME RECEIVED <i>110</i>	PROMISED	REQUESTED	DUE OUT	WILL CALL <input type="checkbox"/>	WAIT <input checked="" type="checkbox"/>	WAIT DEL. <input type="checkbox"/>	CUSTOMER P.O. No.	REQ/JOB No.
---------------------------	-----------------------------	----------	-----------	---------	---------------------------------------	---	---------------------------------------	-------------------	-------------

CHARGE  ASSOCIATED GEOLOGICAL SERVICES LTD  
 C.O.D.  100 535 THURLOW ST  
 CASH  VANCOUVER B C

*1/2 42*  
 DATE *10 11 63*  
 Mo| Day| Yr.

A420 6344145

SHIPPING INSTRUCTION  
 MAIL  AIR MAIL  BUS COLLECT PREPAID  
 RAIL EXPRESS  AIR EXPRESS

ORIGINALS TO:

PRINTS TO:

SPECIAL INSTRUCTIONS

READ ATTACHED  PORTION ONLY  
 REDUCE TO  ENLARGE TO  
 EXTRA OPAQUING

PROOF REQUIRED

BIND  PUNCH  STAPLE  TRIM  
 COLLATE  PAD in \_\_\_\_\_  FRAME  CERLOX

QTY	DEPT.	DUE OUT	IN	OUT	RUN	TRIM	Q.C.
<input checked="" type="checkbox"/>	DRIPRINT						
	BLUEPRINT						
	FILM						
	ART						
	XEROX						
	OFFSET						
	914						
	O/W						

No. of ORIG.	No. PRINTS OF EACH	DESCRIPTION	SIZE	SQ. FT.	TOTAL SQ. FT.	UNIT PRICE	AMOUNT	COST
2	3	DRIPRINT PAPER ELITE BLACK			27	08	216	3
(2)	1	LINEN SEPIA PERMA SCALE WET BLUELINE ART XEROX PROJ PAPER VELOX AUTO POSITIVE FILM NEG FILM NEG FILM POS AUTOPOS FILM	TE 245 2458 REV FACE UP SEPIA BLACK FACE UP REV PAPER CLOTH PASTE UP TYPESET BOND PLATES THIN STD. REV FACE UP S. W. D. W. PAPER REV FACE UP COPYLINE CRONAR SCREEN TONE FACE UP REV MATTE PROJ CONTACT REV FACE UP		9	30	270	3
		WET BLUELINE	PAPER CLOTH					3
		ART	PASTE UP TYPESET					3
		XEROX	BOND PLATES					5
		PROJ PAPER	THIN STD. REV FACE UP					5
		VELOX	S. W. D. W.					5
		AUTO POSITIVE	PAPER REV FACE UP					5
		FILM NEG	COPYLINE CRONAR					5
		FILM NEG	SCREEN TONE					5
		FILM POS	FACE UP REV MATTE					5
		AUTOPOS FILM	PROJ CONTACT REV FACE UP					5
		WASH OFF FILM						5
		OFFSET PLATES	ZEROX PHOTO ITEK METAL					6
		OFFSET COPIES	1250 2066	1250WL				6
		STOCK						6
		ZEROX #4	BOND VELLUM MYLAR ACETATE DULL TOP					6
		LABOUR OR OVERTIME						

*CH 895 11/16/8*

*Mr. Hanson*

TOTAL	486
F. S. T.	58
TOTAL	544
PROV TAX	27
DELIVERY CHARGES	
PAY THIS TOTAL	571

BILLED BY *W-1* DATE *10/11/63* TIME DELIVERED BY DATE OUT TIME

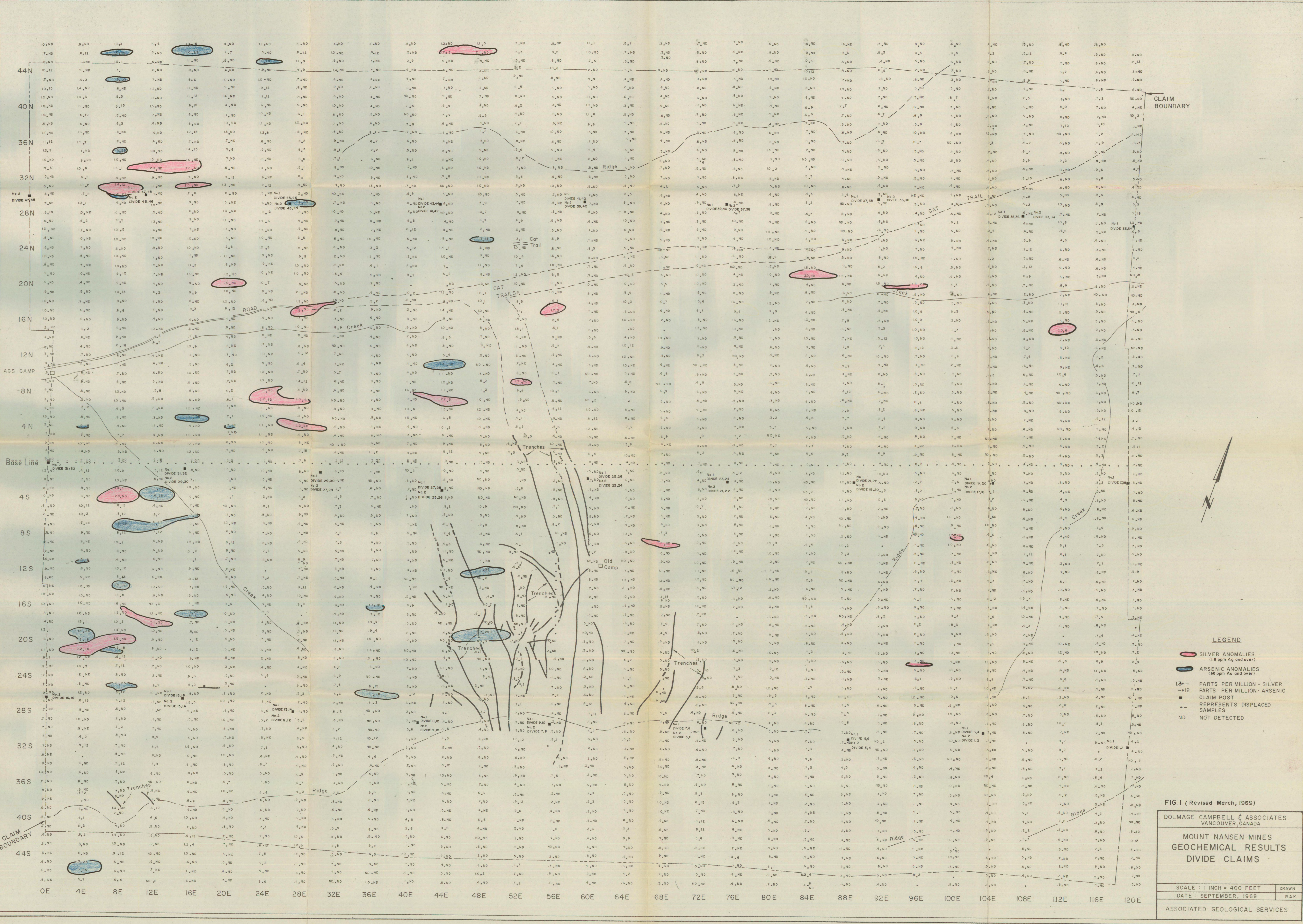
INVOICE NUMBER *69757*

QUALITY CHECK BY DATE TIME

WE RESERVE THE RIGHT TO CHARGE 7% INTEREST ON OVERDUE ACCOUNTS.  
 ALL CLAIMS MUST BE MADE WITHIN 48 HOURS

TERMS: NET 30 DAYS

CUSTOMER SIGNATURE



CLAIM BOUNDARY

- LEGEND**
- SILVER ANOMALIES (1.8 ppm Ag and over)
  - ARSENIC ANOMALIES (16 ppm As and over)
  - 13- PARTS PER MILLION - SILVER
  - 412 PARTS PER MILLION - ARSENIC
  - CLAIM POST
  - REPRESENTS DISPLACED SAMPLES
  - ND NOT DETECTED

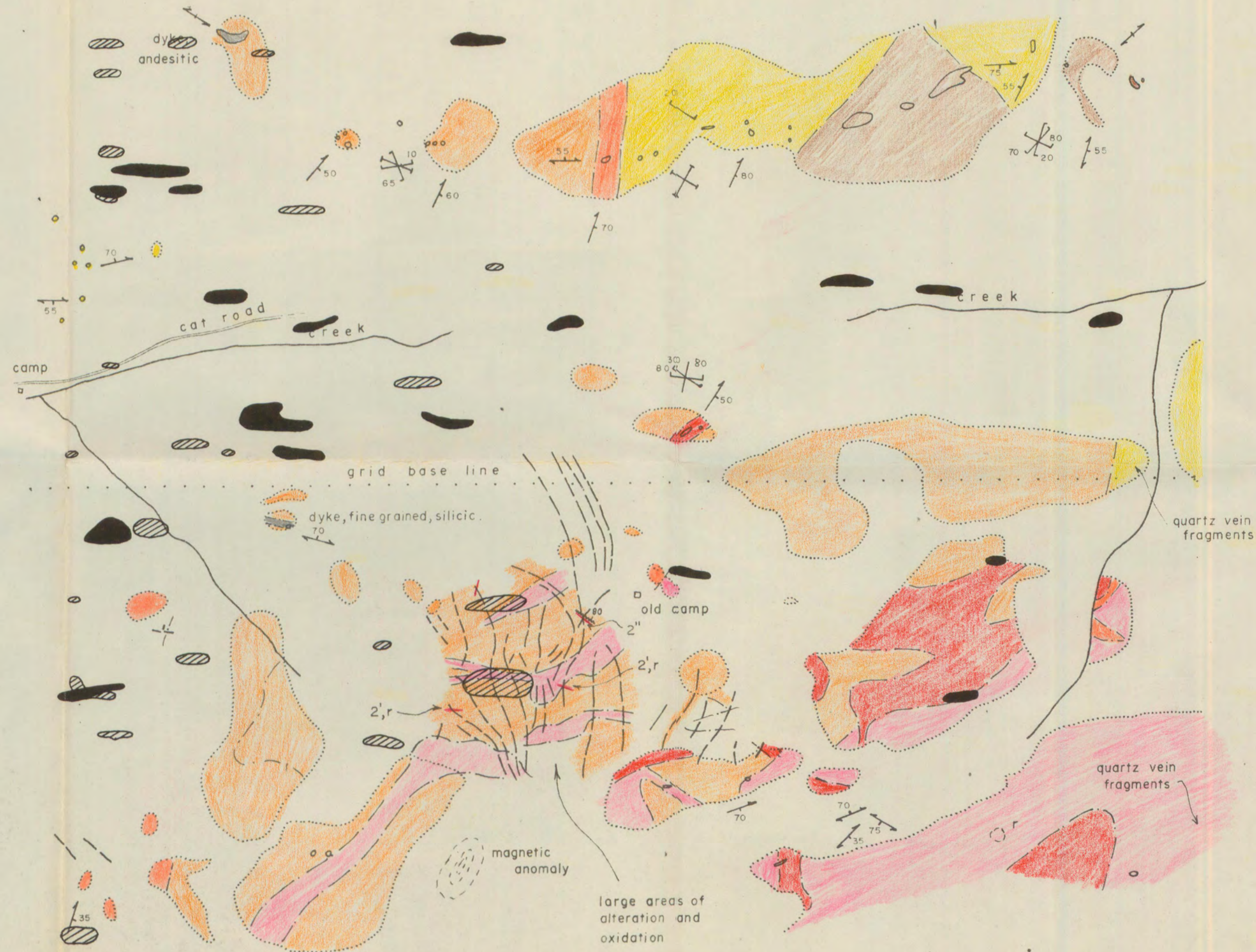
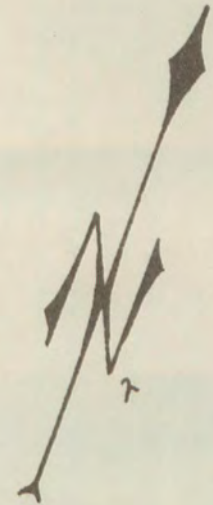
FIG. 1 (Revised March, 1969)

DOLMAGE CAMPBELL & ASSOCIATES  
VANCOUVER, CANADA

**MOUNT NANSEN MINES  
GEOCHEMICAL RESULTS  
DIVIDE CLAIMS**

SCALE: 1 INCH = 400 FEET  
DATE: SEPTEMBER, 1968  
DRAWN: R.A.K.

ASSOCIATED GEOLOGICAL SERVICES



NOTE:  
 The geologic contacts are somewhat tentative because of the mixed nature of the frost heave. However there is reasonably good evidence that the augen gneiss is cut by the porphyry, and both these by the monzonite.

**LEGEND**

**ROCK TYPES:**

- Augen gneiss, 80% pink feldspar 1/4" phenocrysts.
- Hornblende feldspar gneiss, 30 to 45% hornblende.
- Biotite feldspar schist to gneiss 15% biotite
- Basaltic, with black phenocrysts
- Monzonite
- Feldspar porphyry, plagioclase in greenish groundmass

**STRUCTURE:**

- Undifferentiated cleavage and dyke orientations
- Gneissosity.
- Jointing, vertical and dipping
- Faulting
- Geologic contacts
- Outcrop
- Areas of frost heave (felsenmeer)

**OTHER:**

- Vein
- 2' Width of vein
- Rusty
- Trenches
- SILVER ANOMALIES
- ARSENIC ANOMALIES

DOLMAGE - CAMPBELL & ASSOCIATES CONSULTANTS  
 VANCOUVER, CANADA

---

ASSOCIATED GEOLOGICAL SERVICES LTD.  
 VANCOUVER, CANADA

---

MOUNT NANSEN MINES LTD.  
 CARMACKS, Y.T.

**GEOLOGY SKETCH MAP**  
 OF  
**DIVIDE CLAIM GROUP**  
 (SHOWING GEOCHEMICAL ANOMALIES)

SEPTEMBER 1968      1" = 1000'      FIGURE 2.  
 (REVISED MARCH, 1969) D.A.