

GEOLOGICAL, GEOCHEMICAL AND GEOPHYSICAL REPORT

PIG-KATE GROUP

Watson Lake Mining District

Yukon Territory

N.T.S. 105 J - 2, 7.

Latitude: 62° 14' N

Longitude: 130° 40' W

by

W. ROBERTS

CYPRUS ANVIL MINING CORPORATION

January 30, 1978

Field Work Done During the Period August 1, 1977 - September 10, 1977

TABLE OF CONTENTS

	<u>Page</u>
INTRODUCTION .....	1
LOCATION AND ACCESS .....	1
LOCATION MAP .....	2
LIST OF CLAIMS .....	3
GEOLOGY .....	4
LINE CUTTING .....	7
GEOCHEMICAL SURVEYS .....	7
GEOPHYSICAL SURVEYS .....	10
HEM SURVEY	
Instrumentation .....	10
Electromagnetics .....	10
Survey Methods .....	11
Electromagnetics .....	11
Survey Results .....	11
MAGNETOMETER SURVEY	
Instrumentation .....	12
Survey Method .....	12
Survey Results .....	12
CONCLUSIONS AND RECOMMENDATIONS .....	13

APPENDICES

Appendix I	List of Personnel and Days Worked on the Claims
Appendix II	Summary of Costs
Appendix III	Affidavit Supporting Summary of Costs
Appendix IV	Vouchers Supporting Summary of Costs

ILLUSTRATIONS

Claim Map	- in pocket	1" = ½ mile
Geology Map	- in pocket	1" = 400 feet
Geochemical Values Map - Rock Chips	- in pocket	1" = 400 feet
Geochemical Values Map - Copper	- in pocket	1" = 400 feet
Geochemical Values Map - Lead	- in pocket	1" = 400 feet
Geochemical Values Map - Zinc	- in pocket	1" = 400 feet
Ground Magnetometer Survey	- in pocket	1" = 400 feet
HEM Survey	- in pocket	1" = 400 feet
HEM and Magnetometer Profiles - KATE Grid	- in pocket	1" = 200 feet
HEM and Magnetometer Profiles - PIG Grid	- in pocket	1" = 200 feet

GEOLOGICAL, GEOCHEMICAL AND GEOPHYSICAL REPORT

PIG-KATE GROUP

INTRODUCTION

Regional geochemical silt sampling programs conducted in regions of favourable geology in the Selwyn Basin outlined areas of possible lead and zinc mineralization. Streams draining the previously staked KATE Group and the area immediately to the east were found to be highly anomalous in lead.

The PIG 1 - 50 claims were staked in July, 1976 to cover the eastern source of the anomalies. Field work in 1976 consisted of line cutting and grid soil sampling over much of the PIG claims.

In 1977, the adjoining KATE Group was optioned from Welcome North Mines and a grid was established over economically interesting geology. Further soil sampling, rock chip sampling, geologic mapping, magnetometer and electromagnetic surveys were conducted on both claim groups during the 1977 field season.

LOCATION AND ACCESS

The PIG-KATE Group is located approximately 11 miles northwest of Traffic Mountain on claim sheets 105 J - 2 and 7. Longitude and latitude of the centre of the claims is roughly 130° 40' W and 62° 14' N respectively.

Access is by helicopter from a base camp at Pike Lake, approximately 6 miles to the south, or from Ross River 60 miles to the southwest. The base camp was supported with float equipped fixed wing from Ross River.

PIG-KATE GROUPS

N.T.S. : 105-J-2

SCALE: 1 inch = 4 miles



LIST OF CLAIMS

<u>Claims</u>	<u>Grant No.</u>	<u>Expiry Date</u>
PIG 1 - 50	YA106-YA155	July 15, 1981
KATE 2	Y83858	February 3, 1981
4	Y83860	February 3, 1981
6	Y83862	February 3, 1981
8	Y83864	February 3, 1981
10	Y83866	February 3, 1981
12	Y83868	February 3, 1981
14	Y83870	February 3, 1981
16	Y83872	February 3, 1981
18	Y83874	February 3, 1981
20	Y83876	February 3, 1981
22	Y83878	February 3, 1981
24	Y83880	February 3, 1981
26	Y83882	February 3, 1981
28	Y83884	February 3, 1981
33-60	Y83889 - Y83916	February 3, 1981
65-92	Y83921 - Y83948	February 3, 1981

## GEOLOGY

The Selwyn Basin, a negative basinal feature, defined during Cambrian time, is located between the Mackenzie Arch to the east and the Pelly-Cassiar Platform on the west. Basinal sedimentation consisted of deep water cherts with facies changes to black shales, siltstones and finally carbonates approaching the shallow platforms. This pattern of sedimentation occurred from the Cambrian to mid-Devonian, before the area was uplifted. Alternating periods of uplift and quiescence, evidenced by interbedded black shales and conglomerates to siltstones, is typical of the depositional environment during the Upper Devonian to Triassic. Various lithologic units within the Selwyn Basin, with the exception of the deeper water chert, are highly variable and difficult to trace laterally because of extreme facies changes due to changing depositional environments. Units on either side of the basin are distinct and are difficult to correlate.

Major stratiform lead-zinc mineralization discovered to date occurs in black shales along the eastern and western edge of the basinal structure. Mineralization along the eastern edge occurs in restricted euxinic depressions in black shale. So far, no such depressions have been identified along the western extremity of the basin.

The PIG-KATE Group cover interbedded black to grey chert and shale and minor carbonates of Ordovician to Devonian age that occur along the eastern margin of the Pelly-Cassiar Platform.

Calc-silicates, assigned Unit 1, occur extensively throughout the south central portion of the KATE Group. The characteristic rock type is a white to pale green weathering, pale green to dark green, purple and white banded quartz-diopside-actinolite-biotite skarn, with minor bands of marble, limestone and amphibolite. Carbonate content is variable and often the unit is largely composed of dark grey to black phyllite and fine-grained schist. Individual laminae vary from 2mm to over 10cm in thickness but average roughly 1cm. Contacts between laminae are sharp and generally parallel to the penetrative foliation. The interbeds of quartz biotite phyllite vary from 50 feet to over

200 feet in thickness, weathering rusty brown due to oxidation of disseminated pyrite.

Irregular beds, pods and lenses of limestone are common throughout the section of calc-silicates but are more predominant along the southern boundary of the KATE Group. Shaly limestone, Unit 1b, is considered to be correlative to the "wavy banded" limestone to the north and east.

The apparent thickness of the calc-silicates is misleading due to the complexity of tight isoclinal folding but it is estimated to be over 1000 feet thick in this area. Foliation of the calc-silicates trends approximately 110 degrees and dips at 60 degrees to the south. This foliation is sub-parallel to the limbs of northeast verging overturned isoclinal folds.

Mineralization in this Unit consists of discontinuous bands, irregular patches, small blebs, fracture fillings, and disseminations of varying amounts of pyrite, pyrrhotite, chalcopyrite, galena and sphalerite. Mineralized areas are generally easily found as they contain well developed limonitic coatings on weathered surfaces. Malachite and azurite are common in weathered copper rich zones.

This polymetallic mineralization in the calc-silicates yields excellent coincident multi-element soil geochemical anomalies. Several showings and geochemical anomalies were prospected but detailed assessment of the showings was not undertaken due to their low economic potential.

A thin band of black to silvery-grey weathering, black siliceous shale directly overlies the calc-silicates just south of the KATE baseline. Monograptus found in bedding planes indicates an Ordovician to Devonian age. Bedding, outlined by fine light grey bands on weathered surfaces, generally trends at 120 degrees and dips steeply to the south. This Unit is thought to be correlative to the Howard's Pass Formation, host for the stratiform lead-zinc deposit at Howard's Pass. No mineralization was noted in Unit 2.

Unit 3, consisting of light grey to black weathering, black thick bedded chert, overlies the shale horizon but also contains several black shale and grey chert beds. The chert is predominantly black and contains minor black shale partings that often contain graptolites. All fractures and shear zones contain varying amounts of graphite. This Unit may represent the transition zone between deposition of shallow water black shales and deep water vari-coloured cherts. Unit 2 and 3 are the potentially interesting hosts for possible stratiform lead-zinc mineralization.

Unit 4, the Road River Formation, is composed of a thick sequence of thick to thin bedded, dark to vari-coloured weathering, black, light grey, white, green, and red chert. The central portion of Unit 8, containing vari-coloured cherts with little to no interbedded shale, is presumed to be the centre of the Selwyn Basin; a deep water environment of deposition with little addition of pelitic material.

Individual chert beds up to 1 foot thick are common but tend to become narrower as the amount of interbedded shale increases. Bedding is generally undulating with evidence of rip off clasts indicating turbidity. Worm burrows are common in the deeper water cherts.

Structurally, the Road River cherts show evidence of a strong northeast compressive force as most exposures contain northeast verging tight isoclinal folds. The axes of most folds trends from 290 to 330 degrees. Amplitudes vary from 50 feet to over 500 feet.

The Road River Formation has resulted from sedimentation and chemical precipitation of chert in a northwest orientated elliptical depression in the centre of the Selwyn Basin. The true thickness of Unit 4 on the PIG-KATE Group is unknown but is estimated to be over 1000 feet.

Light grey weathering, interbedded grey to greenish-grey shale with lenses, pods and thin beds of grey limestone was mapped as Unit 5. This calcareous unit occurs as thick beds within the lower portion of the chert sequence. Although fossils were not obtained, it is thought that Unit 5 is Ordovician to Devonian

in age and possibly correlative to the light grey calcareous phyllite in the Faro-Ross River area. Mineralization was not discovered in this Unit.

Several outcrops of dark brown weathering, dark green diorite were noted near the junction of the PIG and KATE claim groups. The diorite dykes and sills are probably related to prominent Tertiary intrusions and volcanism a few miles to the south of the claims. Mineralization was not found within or adjacent to the diorite.

Structurally, the PIG-KATE area has suffered from a period of strong southwest-northeast compression, characterized by northwest trending imbricate mesoscopic thrusts, northeast verging isoclinal folds and a strong penetrative foliation. Isoclinal folds plunge to the east-southeast and are responsible for the absence of Unit 1 on the PIG Group. Faulting is of minor importance as it does not alter trends of major rock units.

#### LINE CUTTING

A hand cut grid, totalling 15 miles, was established over Units 2 and 3. All lines were chained and 100 foot stations were accurately positioned with pickets. Slope corrections were made on all hillsides.

#### GEOCHEMICAL SURVEYS

A total of 830 soil and 114 rock samples were taken during the 1977 field season. Soil samples were taken every 200 feet along 800 foot spaced grid lines. In economically interesting areas, samples were taken every 100 feet along 400 foot spaced lines. Roughly, one quarter pound of "B" or "C" horizon soil was packed in kraft sample bags and sent to Acme Analytical Laboratories in Ross River for analysis. Each sample was dried, sieved to -80 mesh, weighed to 0.5 grams, digested in nitric per chloric acid and analysed for total trace element content of copper, lead, and zinc by atomic absorption. All tabulated results are in parts per million (ppm).

Rock chips were also packaged in kraft sample bags and sent to the Acme

Lab in Ross River. After the rocks were pulverized, the procedure was similar to previously mentioned soil analysis.

Re-sampling of a small portion of the 1976 PIG grid yielded almost identical results, thus the cumulative Frequency Plots resulting from the 1976 survey may be used for the 1977 survey. Data points for lead values outlined a smooth curve indicating a bi-modal density distribution with an inflection point at 50 ppm lead. The background population was calculated from the curve using the method described by Sinclair (1973). Threshold, calculated at the 98 cumulative percentile, was 100 ppm lead. Data points for zinc also indicated 2 or more distinct populations. All values over 400 ppm zinc and 150 ppm copper are considered anomalous.

All anomalous copper values occur within Unit 1, the calc-silicates. Anomalies reflect minor chalcopyrite mineralization in fractures, veins and small pods in isolated zones of sulphide deposition. Coincident copper, lead, and zinc anomalies on Lines 204 to 220 West are due to pyrrhotite-chalcopyrite and minor galena-sphalerite mineralization as fracture fillings, disseminations and small irregular skarns within a calcareous zone of the calc-silicates. This showing, termed the "Nipple Showing" by previous workers, received little attention during the 1977 program. The two coincident 3 metal anomalies on Line 32 West were not prospected since they are likely reflecting similar mineralization.

Zinc response was disappointingly low. The most prominent anomaly located between Lines 144 W and 196 W, appears to reflect a high zinc background in underlying massive bedded, black graphitic chert. This low magnitude elongate feature is not associated with any significant lead response and thus is not considered to be of any economic significance.

Excellent lead response was obtained in soils near the boundary of the two claim groups. Several of the prominent anomalies were designated block letters to simplify discussion on location and orientation. The linear alignment of anomalies A, B, C, and D, parallels the attitude of the underlying inter-bedded black chert, black shale and minor light grey chert and shale. It was

hoped that these four anomalies represented the surface trace of stratiform lead mineralization and the area was prospected in detail. Quartz vein float containing minor arsenopyrite and galena was the only mineralization discovered in the area.

Anomaly E, a one sample high, is underlain by a thick bedded green to grey chert with minor black shale partings. Prospecting failed to locate any sulphide mineralization.

Although the peaks of anomalies F and G do seem to align, the irregular and discontinuous nature of the two anomalies would suggest the lack of any associated major stratabound lead mineralization. Both areas were prospected; no mineralization was found.

Since surface prospecting failed to locate the source of the anomalous lead geochemistry, pits and trenches were hand dug within and upslope from anomalies A to F. Chip samples were taken from bedrock, when reached, as well as from all float in the pits. Pit locations and sampling results may be noted on the "Geochemical Values Map - Rock Chips" in the pocket accompanying this report.

Metal content of the rock units sampled is generally very low. Surprisingly, high lead values, obtained in sample numbers 390, 424, 448, and 487, occur in light grey chert and shale. Sample number 402, silicified grey shale and chert with minor arsenopyrite, contained 2750 ppm lead. Veins and fracture fillings of quartz with minor arsenopyrite and traces of galena are likely the source of lead anomalies A to D. To date, both prospecting and rock geochemistry have failed to locate a black shale hosted mineralized source for the lead anomalies.

GEOPHYSICAL SURVEYS

HEM SURVEY

Instrumentation

Electromagnetics

The Apex MaxMin II electromagnetic system manufactured by Parametrics Limited, Markham, Ontario, was used on the entire claim block and the Crone CEM system manufactured by Crone Geophysics Limited of Mississauga, Ontario, was used on parts of the property.

Specification for the two instruments are shown below:

APEX MAXMIN II EM SYSTEM SPECIFICATIONS

OPERATING FREQUENCIES: 222, 444, 888, 1777 and 3555 Hz.  
COIL SEPARATIONS: 100, 200, 300, 400, 600 and 800 feet.  
MODES OF OPERATION: (a) Tx coil plane and Rx coil plane horizontal (Horizontal loop mode).  
(b) Tx coil plane horizontal and Rx coil plane vertical (Minimum coupled mode).  
PARAMETERS MEASURED: In-phase and Quadrature component of the secondary field.  
READOUTS: Automatic, direct readout on 3½" size meters.  
SCALE RANGES: In-phase: ±20% normal, ±100% by switch.  
Quadrature: ±20% normal, ±100% by switch.  
Inclinometers: ±50% tilt.  
READING REPEATABILITY: ±½% to ±1%.

CRONE CEM EM SYSTEM SPECIFICATIONS

STANDARD FREQUENCIES: 390, 1830 and 5010 Hz (others available upon request).  
Field tilt measurement by visual null on field strength meter and audio null through crystal earphones.  
INCLINOMETER RANGE: 200°, accuracy ±0.5 degrees.  
RECEIVER GAIN CONTROL: Linear calibrated 10 turn pot.  
Field strength measurements from meter.  
OPERATING RANGE OF COILS: Up to 200 meters (600').

## Survey Methods

### Electromagnetics

The MaxMin system was used in the horizontal loop mode with a cable length of 200 feet. Frequencies of 444 and 1777 Hz were used initially. The 444 frequency was eliminated when it was found that the additional readings were unnecessary. Readings were taken at 100 foot intervals and at 50 foot intervals in anomalous areas on lines 400 feet apart. Slopes were measured using an inclinometer and the transmitter and receiver coils were tilted using the attached tilt meter.

The Crone CEM system was used in the vertical loop mode to trace horizontal loop conductors between lines. The transmitter coil was located on the conductor, and receiver coil tilt angles were recorded at some distance from the transmitter until a crossover was obtained.

## Survey Results

A multitude of excellent conductors were outlined by the HEM survey and may be noted on the accompanying "HEM Survey" maps at scales of 1 inch equals 200 feet and 1 inch equals 400 feet. In an effort to gauge these electromagnetic features, conductivity measurements were made of all major rock units within the survey area. Black massive chert with black graphitic shale partings and graphite-coated fractures and sheared surfaces is the best conductor on the claim group. Black siliceous shales, Unit 2, are slightly to moderately conductive. Calc-silicates, grey chert and shale as well as calcareous shale are non-conductive.

The close spacing of multiple conductors, outlined on the 400 scale map, likely represents a folded or stratigraphic repetition of the graphitic black chert horizon in Unit 3. Any electromagnetic response of shale hosted sulphides would probably be masked by the excellent conductivity of the graphitic chert. Since the black shale

and chert horizons are interbedded over narrow widths, it would almost be impossible to determine if the source of the conductor was in the shale or in the chert.

Hand trenching in the area of conductor number 1, lying upslope from lead anomalies A and B, failed to locate the source of the conductivity. Cat trenching or diamond drilling are required to define the source of this geochemical-geophysical target.

## MAGNETOMETER SURVEY

### Instrumentation

Fluxmaster Model MV-1 fluxgate magnetometers manufactured by Pheonix Geophysics Limited of Willowdale, Ontario, were used on the survey.

#### SPECIFICATIONS FOR PHOENIX MV-1 MAGNETOMETER

SENSITIVITY:	±5 gammas on 300 gamma range.
MEASURING RANGES:	300, 1K, 3K, 10K, 30K, 100K gammas.
LATITUDE ADJUSTMENT:	±100,000 gammas.
TEMPERATURE STABILITY:	-40°C to +55°C.

An MV-1 magnetometer and a Rustrak single channel recorder were used as a continuous base station recorder.

### Survey Method

Readings were taken with a fluxgate magnetometer at 50 foot intervals in background areas and at 25 foot intervals in anomalous areas. Diurnal variations of the magnetic field were measured by the continuous base station recorder described above.

### Survey Results

The magnetometer survey was undertaken to aid geological mapping in the areas of good lead geochemical response. Potential stratiform lead-zinc mineralization being sought after, is not expected to have

a magnetic response.

Contoured magnetic values outline two elongate magnetic anomalies that are coincident with lead anomalies A-B and F-G. Two features are interpreted to be underlying intrusive rocks possibly related to the diorite dykes.

#### CONCLUSIONS AND RECOMMENDATIONS

Grid soil sampling on the PIG-KATE claim groups outlined several potentially interesting elongate lead geochemical anomalies within interbedded black shale, black chert, as well as grey chert and shale. Anomalous lead values obtained from the rock chip sampling program, occur in quartz-arsenopyrite veins and fracture fillings. Light grey chert float, found in several lead anomalous areas, also contained high lead values.

Geological mapping and prospecting failed to locate potentially economic stratiform mineralization or any evidence of third order basins within the two claim groups.

The electromagnetic survey successfully outlined several multiple conductors that are largely due to graphite coatings on sheared surfaces within the black graphitic chert horizon. The two magnetic features, coincident with the two major lead geochemical anomalies, appear to outline intrusives at depth. These intrusive bodies are likely the source for quartz-arsenopyrite mineralization found on the surface.

No further work is recommended at this time.

Respectfully submitted,

---

WAYNE J. ROBERTS

January 30, 1978.

STATEMENT OF QUALIFICATIONS

I, WAYNE J. ROBERTS, with business address in Vancouver, British Columbia, and residential address in Coquitlam, British Columbia, hereby certify that:

- 1) I graduated from the University of British Columbia in 1968 with a BSc majoring in Geology;
- 2) From 1968 to the present I have been actively engaged as a geologist in mineral exploration in British Columbia and the Yukon Territory.
- 3) I am a Fellow of the Geological Association of Canada.
- 4) I personally participated in the field work on the PIG-KATE Group and have interpreted all data resulting from this work.

---

WAYNE J. ROBERTS

## APPENDIX I

LIST OF PERSONNEL AND DAYS WORKED ON THE CLAIMS

## Schedule "B"

W. Roberts	Geologist	124 Mundy Street	August 1 - 10, 13, 18 - 19
D. Kilby	Geologist	700 Second St., S.W. Calgary, Alta (HBOG)	August 1 - 15
D. Davis	Prospector	1102 Vista Heights Victoria, B. C.	August 1 - 12, 27 - 31
B. Youngman	Soil Sampler	44 McRae Drive, Toronto, Ontario	August 1 - 12, 24
R. Blatchley	Soil Sampler	1024 Groveland Place, West Vancouver, B. C.	August 6 - 14
J. Johnston	Geophysical Operator	700 Second St., S. W. Calgary, Alta (HBOG)	August 1 - 17
M. Kilby	Geophysical Operator	2252 West 5th, Vancouver, B. C.	August 6 - 14, 27 - 31
R. Fretwell	Geophysical Operator	R.R. 4, Avery Road Kelowna, B. C.	August 6 - 14
C. Davis	Cook	1102 Vista Heights Victoria, B. C.	August 1 - 15, 27 - 31

SERVICE COMPANIES

Eastern Associates	Whitehorse, Y. T.	Line Cutters
Trans North Turbo Air	Whitehorse, Y. T.	Helicopter Charter

## APPENDIX II

SUMMARY OF COSTSCYPRUS ANVIL MINING CORPORATION

PIG-KATE Claim Expenditure Summary  
January 1, 1977 - December 31, 1977.

## Schedule "A"

	<u>Reference</u>	<u>Amount</u>
Salaries and Wages	Schedule C	\$ 5,179.73
Line Cutting	Schedule D	3,800.00
Surveys - Geophysical	Schedule E	1,365.64
Surveys - Others	Schedule F	941.32
Assays and Geochemical Analysis	Schedule G	2,367.40
Field Equipment and Supplies	Schedule H	557.40
Camp Maintenance	Schedule I	2,035.38
Fuel	Schedule J	660.60
Rotary Wing	Schedule K	8,780.27
Fixed Wing	Schedule L	2,066.25
Miscellaneous Transportation	Schedule M	52.82
Property Acquisition and Option Payments *	Schedule N	7,500.00
Property Maintenance *	Schedule O	1,020.00
District Expense	Schedule P	300.73
		<hr/>
		\$ 36,627.54
Administration 10%		3,662.75
		<hr/>
TOTAL EXPENDITURES		\$ 40,290.29
		<hr/> <hr/>

NOTE: Invoices for amounts over \$300.00 are enclosed and other invoices will be provided upon request.

\* Non-applicable for assessment

AFFIDAVIT SUPPORTING SUMMARY OF COSTS

I, WAYNE J. ROBERTS, Geologist, Cyprus Anvil Mining Corporation, of Vancouver, British Columbia, do hereby state that, to the best of my knowledge and belief, the statement of costs presented in this report (GEOLOGICAL, GEOCHEMICAL AND GEOPHYSICAL REPORT, PIG-KATE GROUP) is both correct and true.

\_\_\_\_\_  
WAYNE J. ROBERTS

\_\_\_\_\_  
Date.

\_\_\_\_\_  
Notary Public in and for the  
Province of British Columbia

APPENDIX IV

VOUCHERS SUPPORTING SUMMARY OF COSTS

NAME *McC. Tillan* . . . . .  
*Aug* . . . . .  
*Salaries & Wages* . . . . .

CARD NO.

DATE	φ	REFERENCE NO.	DEBIT	CREDIT	BALANCE	PROOF
30 JUL 76	0	1 1 <i>stating</i>	1 6 6 9 5		1 6 6 9 5	2 0 6 9 5
31 JUL 76	0	1 1	3 7 8 3 8		5 4 5 3 3	2 4 4 8 3
31 AUG 76	0	1 1	3 4 1 3		5 7 9 4 6	2 4 8 2 4
30 SEP 76	0	1 1	2 6 8 3 3		8 4 7 7 9	2 7 5 0 8
30 SEP 76	0	1 1	3 0 7 9 6		1 1 5 5 7 5	3 0 5 8 7
28 OCT 76	0	1 1	3 0 5 0		1 1 8 6 2 5	3 0 8 9 2
29 NOV 76	0	<del>1 1</del> 14	5 2 4 0 0		1 7 1 0 2 5	3 6 1 3 2
30 NOV 76	0	1 1	5 0 1 0 3		2 2 1 1 2 8	4 1 1 4 2
14 DEC 76	0	1 5	1 0 8 5 4		2 3 1 9 8 2	4 2 2 2 8
30 DEC 76	0	1 1	5 6 0 6 4		2 8 8 0 4 6	4 7 8 3 4
30 DEC 76	0	1 1	7 0 0		2 8 8 7 4 6	4 7 9 0 4
31 DEC 76	0	3 5		2 8 8 7 4 6	0	1 9 0 3 0
31 JAN 77	0	1 1	3 2 9 4		3 2 9 4	1 9 3 5 9
28 FEB 77	0	✓ 1 1	3 5 4 1 3		3 5 4 1 3	2 2 5 7 1
					<u>3 8 7 0 7</u>	2 2 9 0 0
31 AUG 77	0	✓ 2 3	4 3 0 0 0		8 1 7 0 7	2 7 2 0 0
31 AUG 77	0	✓ 1 1	3 1 9 2 2 5			
31 AUG 77	0	✓ 1 1	1 1 7 0 4 1 <i>v</i>		5 1 7 9 7 3	7 0 8 2 7

NUMBER	133173		
DATE	AUG 25, 1977		
CUSTOMER'S ORDER			
SALESMAN	AMOUNT		
TERMS			
F.O.B.			

SOLD TO CYPRUS ANVIL MINING CORPORATION LTD.  
330-335 BURBARD ST., VANCOUVER B.C.  
 SHIPPED TO EASTERN ASSOCIATES REC  
 ADDRESS BOX 4152 WHITEHERSE VIA YUKON.

INVOICE

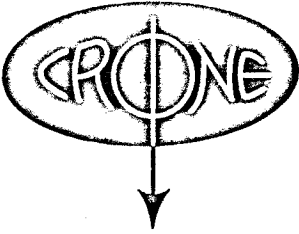
PROJECT: KATE - PIG GROUP	1903-04	3,800.00
LINE GRID		
KATE GROUP 61,878 FT		3,800.00
PIG " " 18,400 FT		
15.2 MILES @ \$250. PER MILE	NO COST	\$ 3,800.00
<b>PAID</b>		
TOTAL COST		\$ 3,800.00

THANK YOU  
 Pique  
 Techn  
 Estm

REDIFORM - 7M31

# CRONE GEOPHYSICS LIMITED

111111



3607 WOLFEDALE ROAD  
MISSISSAUGA, ONTARIO  
CANADA L5C 1V8

PHONE (416) 270-0096

CABLE: CRONGEO, TORONTO

July 25th, 1977

SCHEDULE "E"

Cyprus Anvil Mining Corp.,  
#30, 365 Burrard Street  
VANCOUVER, B.C.

INVOICE # 4723

For the Rental of Geophysical Instrument:

CEM #178-#234-#239, for the period of July 16 - August 26/77 \$735.00


With reference to Invoice #4650:

Cem #239, Unit Returned to Crone on July 14th for Repairs  
Out Again On July 19th, 1977 ..... Rental Credit 2405 -  
2406 - 40.00

**\*\*TOTAL INVOICE\*\*** **\$695.00**

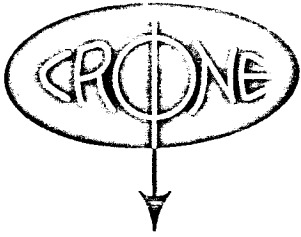
TERMS: Net 30 Days

ACCOUNT	AMOUNT
1903-06	367.50
2501-06	367.50
2505-06	<20.00>
2506-06	<20.00>
	695.00

*s/p 2504* →  
*see Sept correction*  
*5%*  
*6%*  
*attach (PIG)*  
*PERRY*  
*ok*  
*up*  


**PAID**

# CRONE GEOPHYSICS LIMITED



3607 WOLFEDALE ROAD  
MISSISSAUGA, ONTARIO  
CANADA L5C 1V8

PHONE (416) 270-0096

CABLE: CRONGEO, TORONTO

August 17th, 1977

Cyprus Anvil Mining Corp.,  
#30, 365 Burrard Street  
VANCOUVER, B.C.

INVOICE # 4787

For the Rental of Geophysical Instrument:

CEM #178-#234-#239, For the Period of Aug 16-Sept 16/77	\$787.50
Freight Charges as per Attached	<u>16.14</u>
TOTAL	\$803.64

PRICE INCREASE AS OF AUGUST 1ST, 1977

TERMS: Net 30 Days

1903-06	803.64
	803.64
	J. ED
	P

**PAID**

*MB held some of  
this gear will be  
returned prior to  
16 Sept*

*Refer to Inv #4872*



# Hudson's Bay Oil and Gas Company Limited

P.O. Box 2180, Calgary, Alberta, T2P 2M4



Cyprus Anvil Corporation  
 330, 355 Burrard Street  
 Vancouver, B.C.  
 V6C 2G8

RECEIVED  
 SEP 20 1977

INVOICE 243C-70901

INVOICE DATE 1977-09-16

REFERENCE	DESCRIPTION	GROSS/DETAIL	AMOUNT
	To bill you for rental of Apex Max Min 11 EM System for the period of July 3 - August 2/77 on rental to HBOG from Apex Parametrics Limited		
	Invoice #551, dated August 19, 1977		
	TOTAL		\$ <u>680.00</u>
	$\frac{1}{2}$ RG-KATE	$\rightarrow \frac{1}{2}$	<del>\$ 340.00</del>
	$\frac{1}{2}$ CHZERPNOUGH		
	$\frac{1}{2}$ 1903-06 $\frac{1}{2}$ 2506-06		
	<i>J.S. PENNY</i>		
PAYMENT DUE			



# PHOENIX Geophysics Limited

CK # 5439

200 YORKLAND BLVD., WILLOWDALE, ONTARIO, CANADA M2J 1R6

TELEPHONE (416) 493-6350

## INVOICE

August 15, 1977.  
Invoice No. 642-E.

Cyprus Anvil Mining Corp.,  
804, 1550 Alberni St.,  
Vancouver, British Columbia.

Attention: Mr. Peter Dean - Geologist

### RENTAL

- 2 Fluxgate Magnetometers, Serial Nos. 7608, 7711.
- 1 Rustrak recorder

#### Rental Period:

August 10 - September 8, 1977.

2 X MV-1 complete with battery chargers 30 days @ \$10.50/day x2	\$630.00
---	----------

1 Rustrak Recorder 30 days @ \$2.50/day	75.00
--	-------

\$705.00

2501-06 705.00

limited to 1/2 1903-06 352.50

1/5 1/2 mile  
1/2 pig

PHOENIX GEOPHYSICS ENGINEERING COMPANY LIMITED

705.00



Vancouver Office: 1424 - 355 Burrard Street, British Columbia V6C 2G8 Telephone (604) 684-2285  
Tucson Office: 2430 N. Huachuca Drive, Tucson, Arizona 85705 Telephone (602) 884-8542

# INVOICE

## PACIFIC SURVEY CORPORATION

SCHEDULE "F"

5C

1409 WEST PENDER STREET VANCOUVER, B.C., CANADA V6G 2S4 TELEPHONE: 683-6501

Cyprus Anvil Mining Corporation,  
 #330 - 355 Burrard Street,  
 Vancouver, B.C.  
 V6C 2G8

INVOICE NO. 9703  
 DATE 31 May 1977  
 YOUR ORDER NO.  
 JOB No. 77-67  
 PACKING SLIP NO.  
 SHIPPED VIA

QUANTITY	TO:	DESCRIPTION	UNIT PRICE	TOTAL
		Completion:		
		1. 1-inch equals 400 feet pencil manuscript mapping with a 50 foot contour interval, Otter-Pelly River area as per packing slip 9367: Lump sum		\$575.00
		2. One film positive of a portion of Map Sheet 105 J/2 and 7, at 1-inch equals 400 feet: Lump sum	\$150.00	
		12% Federal Sales Tax	18.00	
		7% Provincial Sales Tax	11.76	
	1903-07	754 76		179.76
		75476		<u>\$754.76</u>
		LP		
		(P)		

Mack  
 PIG WATE  
 CHAINS  
**PAID**

TERMS: NET CASH. INTEREST CHARGED ON OVERDUE ACCOUNTS

6455 LAUREL STREET, BURNABY, B.C. V5B 3B4

PHONE: 299-5242

R-7147  
Aug. 10, 1977

CYPRUS ANVIL MINING CORPORATION LTD.  
330-355 BURNARD ST.,  
VANCOUVER, B.C.  
V6C 2G8

TERMS:  
NET TWO WEEKS INTEREST AT  
1 1/2% PER MONTH CHARGED ON  
OVERDUE ACCOUNTS.

SCHEDULE "G"

NUMBER	ASSAY	PRICE	AMOUNT
552	Cu, Pb, Zn, Geochemical Analysis	\$ 2.00	\$ 1104.00
51	Soil Preparations	\$ .25	\$ 137.75
1	Rock Preparation	\$ 1.25	\$ 1.25
	1903-11	1243.00	\$ 1243.00
	552-Mpc - Hete-Pig		
	SHIPPING CHARGES:	1243.00	

PAID

up

(P)

PLEASE PAY LAST AMOUNT →

AGRIUM ANALYTICAL LABORATORY LTD.

6455 LAUREL STREET., BURNABY, B.C. V5B 3B4

PHONE: 299-5242

AUG 23 1977

R-7150

Aug. 16, 1977

CYPRUS ANVIL MINING CORPORATION LTD  
330-335 BURREARD ST.,  
VANCOUVER, B.C.  
V6C 2G8

TERMS:

NET TWO WEEKS INTEREST AT  
1 1/2% PER MONTH CHARGED ON  
OVERDUE ACCOUNTS.

NUMBER	ASSAY	PRICE	AMOUNT
279	Cu, Pb, Zn geochemical analyses	\$ 2.00	\$ 552.00
279	Soil sample preparations	.25	69.75
			<b>\$ 627.75</b>
	<p>Mac. Proj Kok-Pig</p> <p>1903-11      62775</p> <p>627.75</p> <p>40 // (P)</p>		
	SHIPPING CHARGES:		

PAID

# BARRINGER RESEARCH LIMITED

304 CARLINGVIEW DRIVE  
 METROPOLITAN TORONTO  
 REXDALE, ONTARIO  
 CANADA M9W 5G2  
 PHONE: 416-677-2491  
 CABLE: BARESEARCH

ADVANCED TECHNIQUES AND INSTRUMENTATION FOR THE EARTH SCIENCES

DATE: October 11th, 1977

PROJECT: 119.41

Cyprus Anvil Mining  
 • 330 - 355 Burrard St.  
 • Vancouver, B.C.  
 •

PERIOD COVERED:

SALES ORDER:  
 PROGRESS BILLING:  
 SHIPPING REPORT:  
 WORK REPORT: #79A  
 FED. SALES TAX: N/A  
 ONT. SALES TAX: N/A

TERMS: NET 30 days

AUTHORITY: Wayne Roberts

TO: ANALYSIS:

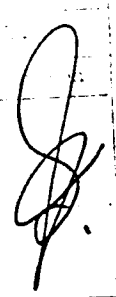


540 soil sample preparation  
 114 rock sample preparation  
 654 HClO<sub>4</sub>/HNO<sub>3</sub> - Cu, Pb, Zn

@ \$ .35 ea. 189.00  
 @ \$ 2.00 ea. 228.00  
 @ \$ 2.40 ea. 1,569.60

TOTAL INVOICE

\$ 1,986.60

ACCOUNT	AMOUNT
1906-11	993.30
1903-11	496.65
1901-11	496.65
1,986.60	

**PAID**



# General Enterprises Limited

## Building Supplies



117 INDUSTRIAL RD. — WHITEHORSE, YUKON Y1A 2T8 PHONE 667-6206 — TELEX 036-8254

SOLD TO  
 CYPRUS ANVIL MINING CORP.  
 P.O. BOX 1000  
 FARO YUKON YOB 1K0

SHIP TO:

*Go* STERLING-EXPEDITING  
5 24 ? FRONTIER FREIGHTLINES

DATE

CUSTOMER'S ORDER NO.		CUSTOMER'S PROJECT		SALESMAN	PICK UP	DATE TO BE SHIPPED	VIA	INVOICE NUMBER		
000 666				BN	-		Frontier	1-166837		
ORDERED	✓	UNIT	DESCRIPTION	FX CODES	SHIPPED	PRICE	UNIT	MULTIPLIER	EXTENSION	
50		Pcs	2x4x8 K.D Spruce	61 461.0	50 50	1.70 1.70	E	NET	✓	85.00
20		Pc	3/8 G 15 cut in half	59 459.0	20 20	13.03 13.03	E	NET	✓	260.50
15		LB	3 1/2 Common Nails	58 458.0	15 15	.43 .43	E	14.5	✓	5.51
10		LB	10 Common Bright	58 458.0	10 10	.67 .67	E	14.5	✓	5.73
<del>5</del>		<del>LB</del>	<del>1/2 Common</del>							
*			Cut to 2'x8'	MIN- 468.0	1	10.00	E	NET	✓	10.00
		ACCOUNT						OVERDUE ACCOUNTS		
		1903-12		366 84				JUN 9 1977		
								PAID		
				366 84				Approved for Payment		
FEDERAL SALES TAX						MISCELLANEOUS CTG/FRT. ETC.		TOTAL PURCHASE		366.84
TAXABLE AMT.	%	F.S.T.						TOTAL INVOICE		366.84
		UP		P						

HANDLING CHARGE ON ALL GOODS RETURNED TERMS NET 30 DAYS. 1% INTEREST PER MONTH ON OVERDUE ACCOUNTS.

ORIGINAL INVOICE

STATEMENT

AUG 19 1977

THE [unclear] STORE  
[unclear] N.Y.T.

DATE Aug 17 19 77

Approved Credit Application  
330 - 355 Burrard St  
Vancouver BC

DATE	DETAILS	DEBIT	CREDIT	BALANCE
	<i>Ind</i>			3487.12
Aug 13	2502-13 1617	7192		3565.04
-16	2502-13 1720	4402		3609.06
-16	2502-13 1704	1533		3624.39
✓ 16	1903-13 1676	7278		3697.17
	PAYMENT		719.43	2977.74
	<del>1901-13 440.56</del>			
	<del>1903-13 1555.82</del>			
	2502-13 617.31			
	2503-13 364.05			
	<b>PAID</b>			
		2977.74		
	<i>UP</i>			

STATEMENT

THE BANK OF AMERICA  
ROSELAND, N.J.

DATE Aug 17 19 11

Supers Credit Replacement  
330-355 Bureau St  
Uniontown, Pa.

DATE	DETAILS	DEBIT	CREDIT	BALANCE
July	Balance pd			719.43
Aug 1	2502-13 1010	74.36		193.79
- 1	1903-13 0961	57.66		851.45
- 2	2502-13 1122	16.54		867.99
✓ 2	1/2 1901-13 383.16 1/2 1903-13 283.70	909.07	766.33	1634.32
- 2	2502-13 1055	38.77		1673.09
- 3	2502-13 1133	33.30		1706.39
- 4	2502-13 1196	62.85		1769.24
✓ 4	2502-13 1200	8.79		1778.03
- 6	2502-13 1278	34.78		1812.81
- 8	2502-13 1332	36.41		1849.22
- 9	2502-13 1382	15.84		1865.06
✓ 9	1903-13 1252	389.31 10.78		2254.37
- 10	2503-13 1407	134.11		2388.48
- 10	2503-13 1408	74.78		2463.26

STATEMENT

THE BANK OF AMERICA  
ROSELAND, N.J.

DATE Aug 17 19 11

Supers Credit Replacement  
330-355 Bureau St  
Uniontown, Pa.

DATE	DETAILS	DEBIT	CREDIT	BALANCE
Aug 10	2503-13 1405	33.52		2863.26
✓ - 10	2503-13 1406	49.24		2496.78
× - 10	2503-13 1411	7.50		2553.52
✓ - 10	2503-13 1412	7.50		2561.02
- 10	2502-13 1446	29.12		2590.14
× - 11	2502-13 1475	57.46		2647.60
- 12	2502-13 1524	23.94		2671.54
- 13	1901-13 57.50 2502-13 24.70 2503-13 17.50	165.8	143.50	2815.04
- 13	2502-13 1655	19.18		2834.22
✓ 13	1903-13 1540	228.64		3062.86
- 13	1903-13 1549	93.63		3156.49
- 13	1903-13 1548	74.30		3230.79
- 13	1903-13 1543	96.53		3327.32
- 13	1903-13 1542	80.80		3408.12
- 13	1903-13 1541	79.00		3487.12

STATEMENT

4664.96  
 CK#542 <2977.74>

THE ... STORE  
 ...

1687.16

DATE

Sept 17 1977

Cyrus Wood & Associates  
 330-355 Burrard St  
 Vancouver BC

DATE	DETAILS	DEBIT	CREDIT	BALANCE
	Start			4488.44
Aug 25	202-13 2606	2602		4508.46
-26	" 2637	2553		4533.99
-27	" 2686	380		4537.79
-27	" 2677	4682		4584.61
-29	1901-13 1847	4372		4628.33
-31	202-13 1941	773		4636.06
-31	1901-13 1937	1590		4651.96
-31	202-13 1931	1294		4664.90
	1901-13		2682.4	
	202-13		594.59	
	1903-13		479.56	
	1906-13		344.77	
			1687.16	

RECEIVED  
 SEP 13 1977  
 REGISTRY

VP  
 RED FORM 10101

\*

STATEMENT

THE ROYAL BANK OF CANADA  
ROBBINS BAY

DATE Sept 7 19 77

Supper Board Munes Fed  
330-355 Burrard St.  
Vancouver B.C.

DATE	DETAILS	DEBIT	CREDIT	BALANCE
	Balance		pd	3697.17
Aug 17	202-13 1789	1129		3708.46
-17	" 1775	1408		3722.54
-18	" 2286	4600		3768.54
-19	" 2324	6861		3837.15
-19	" 0483	6804		3905.19
-19	" 2334	4336		3948.55
-20	2415		719.43	3229.12
-20	" 2429	5599		3285.11
-20	" 2454	842		3293.53
-20	1903-13 2419	11502		3408.55
-20	" 2420	6092		3469.47
-20	" 2422	5955		3529.02
-20	" 2423	8521		3614.23
-20	" 2424	1712		3631.35

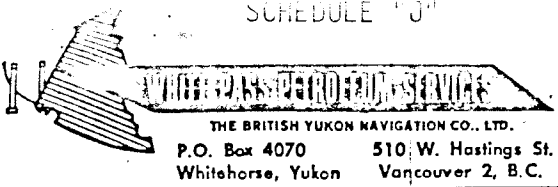
STATEMENT

THE ROYAL BANK OF CANADA  
ROBBINS BAY

DATE Sept 7 19 77

Supper Board explanation  
330-355 Burrard St.  
Vancouver B.C.

DATE	DETAILS	DEBIT	CREDIT	BALANCE
				3631.35
Aug 20	1913-13 2411	14174		3773.09
-22	202-13 2511	2396		3797.05
-22	1901-13 2503	3179		3828.84
-22	202-13 2482	4382		3872.66
-23	" 2524	498		3877.64
-23	" 2540	2213		3899.77
-24	" 2570	4540		3945.17
-24	" 2601	2167		3966.84
-25	1904-13 2467	6442		4031.26
-25	1906-13 2468	718		4038.46
-25	1901-13 2465	11241		4150.85
-25	1906-13 2464	8388		4234.75
-25	1906-13 2466	10002		4334.75
-25	1906-13 2463	15369		4488.44



STATION L-55-K-1000	DATE 11/11/71	
SHIPPED TO	TRUCK NO.	TRIP NO.

SOLD TO (PRINT) CYPRIAN ANTONI...	4490	CUSTOMER'S ORDER OR REQ. NO.
ADDRESS 1903-14	46836	DELIVERED BY

PRODUCTS DELIVERED	SIZE OF PACKAGE	CODE	QUANTITY	PRICE	AMOUNT
DRUMS	46836		270	4.882	238 14
DRUM FILING			270	.08	21 60

TAX (SPECIFY)	GALS. @ 02	5 40
PRODUCTS RECEIVED	RECEIVED PAYMENT	
BY: J. S. L.	CASH	
	CHEQUES	
	EXCH.	
	TOTAL	
APPROVED	CHECKED	

DRUM CHARGES	6 DRUMS	30.00	180 00
DRUM CREDITS			( )
TERMS - NET CASH (NO DISCOUNT)			TOTAL
			468 36

ORM 5 651

P

PAID



YUKON  
CANADA

WING AIRCRAFT

**terr-air** LTD.  
(TERRITORIAL AIRWAYS)

PHONE: 969-0040 FAX: 994-2789  
TELEX: TERR-AIR ROSS

JUL 25 1977

SCHEDULE "K"

PROJECT: \_\_\_\_\_ CHARTER TICKET \_\_\_\_\_

AIRCRAFT 206P HFR. DATE July 27

NAME Cyrus Davis

ADDRESS \_\_\_\_\_

FLIGHT/PASSENGER DETAILS	HOURS	MINS.	FUEL
Flies out to Ketchikan			
to Sitka Alaska			
2501-15	23	38	
* 1903-15	8	42	
Flies to 15 hr, 20 min	2	7	
<b>PAID</b>	3237	50	
TOTAL HRS <u>10.0</u>			
EXTRA CHARGES <u>Free</u>			
<b>TOTAL CHARGES</b>	<b>3237.50</b>		

*P. M. Dean*  
Charterer's Authorization

*[Signature]*  
Pilot's Signature

ROSS RIVER  
YUKON  
CANADA

FIXED AND ROTARY  
WING AIRCRAFT



**terr-air** LTD.  
(TERRITORIAL AIRWAYS)

PHONE: 969-0040 FARO 994-2789  
TELEX: TERR-AIR ROSS

JUL 25 1977

PROJECT: \_\_\_\_\_ CHARTER TICKET 113 1450  
 AIRCRAFT 200R 1150 DATE July 7/77  
 NAME Arthur Powell  
 ADDRESS \_\_\_\_\_

FLIGHT/PASSENGER DETAILS		HOURS	MINS.	FUEL
<u>Acres out bridge area</u>				
<u>Drill Machine 1911M</u>				
<u>Area to Pa</u>				
ACCOUNT				
* <u>1903-15</u>		<u>450.00</u>		
<u>2501-15</u>		<u>1889.75</u>		
<u>2509-15</u>		<u>300.00</u>		
		<u>2639.75</u>		
TOTAL HRS <u>8.8</u>				
EXTRA CHARGES <u>Fuel</u>				<u>87.75</u>
TOTAL CHARGES				<u>2639.75</u>

**PAID**

UP

P

P. Dean  
Charterer's Authorization

[Signature]  
Pilot's Signature





ROSS RIVER  
YUKON  
CANADA

FIXED AND ROTARY  
WING AIRCRAFT

**terr-air**  
(TERRITORIAL AIRWAYS)

PHONE: 969-0040 FAX: 994-2789  
TELEX: TERR-AIR ROSS

PROJECT: \_\_\_\_\_ CHARTER TICKET

AIRCRAFT \_\_\_\_\_ DATE \_\_\_\_\_

NAME \_\_\_\_\_ 1903-15 55038

ADDRESS \_\_\_\_\_ 2506-15 226 62

FLIGHT/PASSENGER DETAILS	HOURS	MINS.	FUEL
		777	00
	UP	(P)	
McCULLAW-KATE	1.7		00
CHALK; 0.7 (PRM)			
TOTAL HRS @ PER HR.			
EXTRA CHARGES			
TOTAL CHARGES			

**PAID**  
OK

Charterer's Authorization

Pilot's Signature







**TRANS NORTH TURBO AIR LTD.**  
 BOX 4338, WHITEHORSE, YUKON Y1A 3T6  
 TELEPHONE (403)668-2177 • TELEX 036-8-290

ACCOUNT NUMBER	740
23225	
INVOICE DATE	AREA B.C. <input type="checkbox"/> YUKON <input checked="" type="checkbox"/> NWT <input type="checkbox"/> ALTA. <input type="checkbox"/>
A/C TYPE	AIRCRAFT REGISTRATION G
PELL 47	FQJY
FLIGHT DATE	DAY MONTH YEAR
04	08 77
PURCHASE ORDER NO.	

CHARTERER CYPRUS ANVIL

BILLING ADDRESS

FUEL & OIL-X	TNTA FUEL USED	HRS.-GALS.	FROM
TNTA CUST.		2.2	
X			

FROM	PIKE LK	MILES	HOURS	ZONE	REMARKS - NO. OF PASS - FREIGHT LBS.
TO			2.2	B	
					1903-15 352.00
					352.00
					UP / (P)

*Charters to  
Kirk-Peg  
Group.*

SUB	G.L.	AMOUNT
		2.2 @ 160 352.00
		e
		e
		e

TERMS: EIGHTEEN PERCENT INTEREST PER ANNUM WILL BE CHARGED ON ALL INVOICES NOT PAID WITHIN 30 DAYS OF DATE ISSUED.

*[Signature]*  
 CHARTERER'S SIGNATURE

*[Signature]*  
 PILOT'S SIGNATURE

*M. MALLOTT*  
 ENGINEER'S NAME

WAITING TIME	e	/HR.
FUEL:	e	/GAL.
FUEL:	e	/GAL.
MEALS & LODGING		
OTHER		
OTHER		

**TOTAL** \$ 352.00

**PAID**

FLIGHT REPORT  
 CUSTOMER COPY



**TRANS NORTH TURBO AIR LTD.**  
 BOX 4338, WHITEHORSE, YUKON Y1A 3T6  
 TELEPHONE (403)668-2177 • TELEX 036-B-290

ACCOUNT NUMBER	740
23226	
INVOICE DATE	AREA B.C. YUKON N.W.T. ALTA.
A/C TYPE	AIRCRAFT REGISTRATION C
BELL 47	FQJY
FLIGHT DATE	DAY MONTH YEAR
050877	
PURCHASE ORDER NO.	

**CYPRUS ANNIL**

CHARTERER

BILLING ADDRESS

FUEL & OIL-X TNTA	CUST.	TNTA FUEL USED	HRS.-GALS.	FROM
X			4.1	

FROM	MILES	HOURS	ZONE	REMARKS - NO. OF PASS - FREIGHT LBS.
PIKE LF		4.1	B	
				1903-15 656.00
				Charge to Kate - Pica
				UP

SUB	G.L.	AMOUNT
		4.1 @ 160 656.00
		e
		e
		e

TERMS: EIGHTEEN PERCENT INTEREST PER ANNUM WILL BE CHARGED ON ALL INVOICES NOT PAID WITHIN 30 DAYS OF DATE ISSUED.

WAITING TIME	e	/HR.
FUEL:	e	/GAL.
FUEL:	e	/GAL.
MEALS & LODGING		
OTHER		
OTHER		

*[Signature]*  
 CHARTERER'S SIGNATURE

*[Signature]*  
 PILOT'S SIGNATURE

*[Signature]*  
 ENGINEER'S NAME

**TOTAL \$ 656.00**

**PAID**

**FLIGHT REPORT  
 CUSTOMER COPY**



**TRANS NORTH TURBO AIR LTD.**  
 BOX 4338, WHITEHORSE, YUKON Y1A 3T6  
 TELEPHONE (403)668-2177 • TELEX 036-8-290

**CYPRUS ANVIL**

CHARTERER

BILLING ADDRESS

ACCOUNT NUMBER	740
23228	
INVOICE DATE	AREA B.C. <input type="checkbox"/> YUKON <input type="checkbox"/> N.W.T. <input type="checkbox"/> ALTA. <input type="checkbox"/>
A/C TYPE	AIRCRAFT REGISTRATION G
G3B2	FQJY
FLIGHT DATE	DAY MONTH YEAR
	7 8 77
PURCHASE ORDER NO.	

FUEL & OIL-X	TNTA FUEL USED	HRS.-GALS.	FROM
TNTA	CUST.		
	<input checked="" type="checkbox"/>		

FROM	MILES	HOURS	ZONE	REMARKS - NO. OF PASS. - FREIGHT LBS.
TO PIKE LAKE		2.3		
	1903-15			368 00
Change to PIG-KATIE GR.				368 00

SUB	G.L.	AMOUNT
		2.3 @ 160 368 00
		e
		e
		e

TERMS: EIGHTEEN PERCENT INTEREST PER ANNUM WILL BE CHARGED ON ALL INVOICES NOT PAID WITHIN 30 DAYS OF DATE ISSUED.

WAITING TIME	@	/HR.
FUEL:	@	/GAL.
FUEL:	@	/GAL.
MEALS & LODGING		
OTHER		
OTHER		

*[Signature]*

CHARTERER'S SIGNATURE

*[Signature]*

PILOT'S SIGNATURE

*[Signature]*

ENGINEER'S NAME

**TOTAL \$ 368 00**

**PAID**

FLIGHT REPORT  
CUSTOMER COPY



**TRANS NORTH TURBO AIR LTD.**  
 BOX 4338, WHITEHORSE, YUKON Y1A 3T6  
 TELEPHONE (403)668-2177 • TELEX 036-8-290

CHARTERER CYPRUS ANNUAL

BILLING ADDRESS \_\_\_\_\_

ACCOUNT NUMBER	740
23229	
INVOICE DATE	AREA B.C. <input type="checkbox"/> YUKON <input type="checkbox"/> NWT <input type="checkbox"/> ALTA. <input type="checkbox"/>
A/C TYPE	AIRCRAFT REGISTRATION C
G3B2	FQJY
FLIGHT DATE	DAY MONTH YEAR
	8 8 77
PURCHASE ORDER NO.	

FULL & OIL-X	TNTA FUEL USED	HRS.-GALS.	FROM
TNTA CUST.	<input checked="" type="checkbox"/>		

FROM	MILES	HOURS	ZONE	REMARKS - NO. OF PASS - FREIGHT LBS.
TO PIKE LAKE		3.0		
				1903-15 480.00
				Charge to PIG-KATE GP. 480.00
				UP (P)

SUB	G.L.	AMOUNT
		3.0 @ 160 480.00
		e
		e
		e

TERMS: EIGHTEEN PERCENT INTEREST PER ANNUM WILL BE CHARGED ON ALL INVOICES NOT PAID WITHIN 30 DAYS OF DATE ISSUED.

CHARTERER'S SIGNATURE *[Signature]*  
 PILOT'S SIGNATURE *Brian Roberts*  
 ENGINEER'S NAME *Mike Mallon*

WAITING TIME	e	/HR.
FUEL:	e	/GAL.
FUEL:	e	/GAL.
MEALS & LODGING		
OTHER		
OTHER		

TOTAL \$ 480.00

**PAID** FLIGHT REPORT CUSTOMER COPY



**TRANS NORTH TURBO AIR LTD.**  
 BOX 4330, WHITEHORSE, YUKON Y1A 3T6  
 TELEPHONE (403)668-2177 • TELEX 036-8-290

**CYPRUS ANNUAL**

CHARTERER

BILLING ADDRESS

ACCOUNT NUMBER	740
23230	
INVOICE DATE	AREA B.C. <input type="checkbox"/> YUKON <input type="checkbox"/> N.W.T. <input type="checkbox"/> ALTA. <input type="checkbox"/>
A/C TYPE	AIRCRAFT REGISTRATION C
G3B2	FQJY
FLIGHT DATE	DAY MONTH YEAR
	19 8 77
PURCHASE ORDER NO.	

FUEL & OIL-F	TNTA FUEL USED	HRS.-GALS.	FROM
TNTA	CUST.		
	<input checked="" type="checkbox"/>		

FROM	MILES	HOURS	ZONE	REMARKS - NO. OF PASS - FREIGHT LBS.
TO PIKE LAKE		2.3		
	1903-15			368.00
				368.00
Change to PIG-KATE				
		2.3		160 368.00
		e		
		e		
		e		
		e		

SUB	G.L.	AMOUNT

TERMS: EIGHTEEN PERCENT INTEREST PER ANNUM WILL BE CHARGED ON ALL INVOICES NOT PAID WITHIN 30 DAYS OF DATE ISSUED.

WAITING TIME	e	/HR.
FUEL:	e	/GAL.
FUEL:	e	/GAL.
MEALS & LODGING		
OTHER		
OTHER		

*[Signature]*  
 CHARTERER'S SIGNATURE

*[Signature]*  
 PILOT'S SIGNATURE

*[Signature]*  
 ENGINEER'S NAME

**TOTAL \$ 368.00**

**PAID**

FLIGHT REPORT  
 CUSTOMER COPY





**TRANS NORTH TURBO AIR LTD.**  
 BOX 4338, WHITEHORSE, YUKON Y1A 3T6  
 TELEPHONE (403)668-2177 • TELEX 036-8-290

**CYPRUS ANNUAL**

ACCOUNT NUMBER	740
23233	
INVOICE DATE	AREA B.C. YUKON NWT ALTA.
A/C TYPE	AIRCRAFT REGISTRATION C
G3B2	FQJY
FLIGHT DATE	DAY MONTH YEAR
	11 8 77
PURCHASE ORDER NO.	

CHARTERER \_\_\_\_\_

BILLING ADDRESS \_\_\_\_\_

FUEL & OIL-S		TNTA FUEL USED	HRS.-GALS.	FROM
TNTA	CUST.		3.3	

FROM	MILES	HOURS	ZONE	REMARKS - NO. OF PASS - FREIGHT LBS.
PIKE LAKE		3.3		
PIG-KATE	2.0	1901-15		208.00
OBY	1.3	1903-15		320.00
				528.00

SUB	G.L.	AMOUNT

3.3 @ 160 = 528.00

TERMS: EIGHTEEN PERCENT INTEREST PER ANNUM WILL BE CHARGED ON ALL INVOICES NOT PAID WITHIN 30 DAYS OF DATE ISSUED.

*[Signature]*  
 CHARTERER'S SIGNATURE

*[Signature]*  
 PILOT'S SIGNATURE

*[Signature]*  
 ENGINEER'S NAME

WAITING TIME	e	/HR.
FUEL:	e	/GAL.
FUEL:	e	/GAL.
MEALS & LODGING		
OTHER		
OTHER		

**TOTAL \$ 528.00**

**PAID**

FLIGHT REPORT  
 CUSTOMER COPY





**TRANS NORTH TURBO AIR LTD.**  
 BOX 4338, WHITEHORSE, YUKON Y1A 3T6

TELEPHONE (403)668-2177 • TELEX 036-8-290

**CYPRUS ANNUAL**

CHARTERER

BILLING ADDRESS

ACCOUNT NUMBER	740
23234	
INVOICE DATE	AREA B.C. YUKON NWT ALTA.
A/C TYPE	AIRCRAFT REGISTRATION C
G3B2	FQJY
FLIGHT DATE	DAY MONTH YEAR
12	8 77
PURCHASE ORDER NO.	

FUEL & OIL - TNTA	FUEL USED	HRS.-GALS.	FROM
✓			

FROM	MILES	HOURS	ZONE	REMARKS - NO. OF PASS - FREIGHT LBS.
PIKE LAKE		4.6		
		1901-15		368.00
		1903-15		368.00
				736.00
		4.6		736.00

Charge  
 1/2 Kade-Piq  
 1/2 Mac. OEF

SUB	G.L.	AMOUNT

TERMS: EIGHTEEN PERCENT INTEREST PER ANNUM WILL BE CHARGED ON ALL INVOICES NOT PAID WITHIN 30 DAYS OF DATE ISSUED.

*[Signature]*  
 CHARTERER'S SIGNATURE

*[Signature]*  
 PILOT'S SIGNATURE

*[Signature]*  
 ENGINEER'S NAME

WAITING TIME	e	/HR.
FUEL:	e	/GAL.
FUEL:	e	/GAL.
MEALS & LODGING		
OTHER		
OTHER		

**TOTAL \$ 736.00**

**PAID**

FLIGHT REPORT  
 CUSTOMER COPY



**TRANS NORTH TURBO AIR LTD.**  
 BOX 4338, WHITEHORSE, YUKON Y1A 3T6  
 TELEPHONE (403)668-2177 • TELEX 036-8-290

*CUPPUS - ANVIC*

CHARTERER

BILLING ADDRESS

ACCOUNT NUMBER	740
21257	
INVOICE DATE	11/18/77
A/C TYPE	DHC-2T AVAV
FLIGHT DATE	020877
PURCHASE ORDER NO.	

FUEL # OIL-X	TNTA FUEL USED	HRS.-GALS.	FROM
TNTA CUST.	JD-4	5.9	ER

FROM	MILES	HOURS	ZONE	REMARKS - NO. OF PASS. - FREIGHT LBS.
ROSS RIVER		1.4		RECCE
PIKE LK.				
ROSS RIVER	60			
PIKE LK.	60			
ROSS RIVER	60			
PIKE LK.	60			CAMP MOVE
ROSS RIVER	60			
PIKE LK.	60			
ROSS RIVER	60			
PIKE LK.	60			Change to
ROSS RIVER	60			15-AG

SUB	G.L.	AMOUNT
634	6020	109740

1.4 @ 150	210 40
540 @ 1.55	837 00

1903-15 26040  
 1903-16 83700

TERMS: EIGHTEEN PERCENT INTEREST PER ANNUM WILL BE CHARGED ON ALL INVOICES NOT PAID WITHIN 30 DAYS OF DATE ISSUED.

WAITING TIME

FUEL:

FUEL:

MEALS & LODGING

OTHER

OTHER

*[Signature]*  
 CHARTERER'S SIGNATURE

*[Signature]*  
 PILOT'S SIGNATURE

ENGINEER'S NAME

**TOTAL \$109740**

**PAID**

**FLIGHT REPORT INVOICE**



4126

SCHEDULE "0"

THE TORONTO-DOMINION BANK  
839 West Hastings Street  
at Hornby Street  
Vancouver, B.C. V6C 1G5

Date	Cheque No.	Amount
1/11/77	4126	\$ 1,020.00

Pay The sum of \$ 1,020 and 00 Cts

To the order of **Mining Recorder  
Watson Lake, Y.T.**

Cyprus Anvil Mining Corporation

Per \_\_\_\_\_

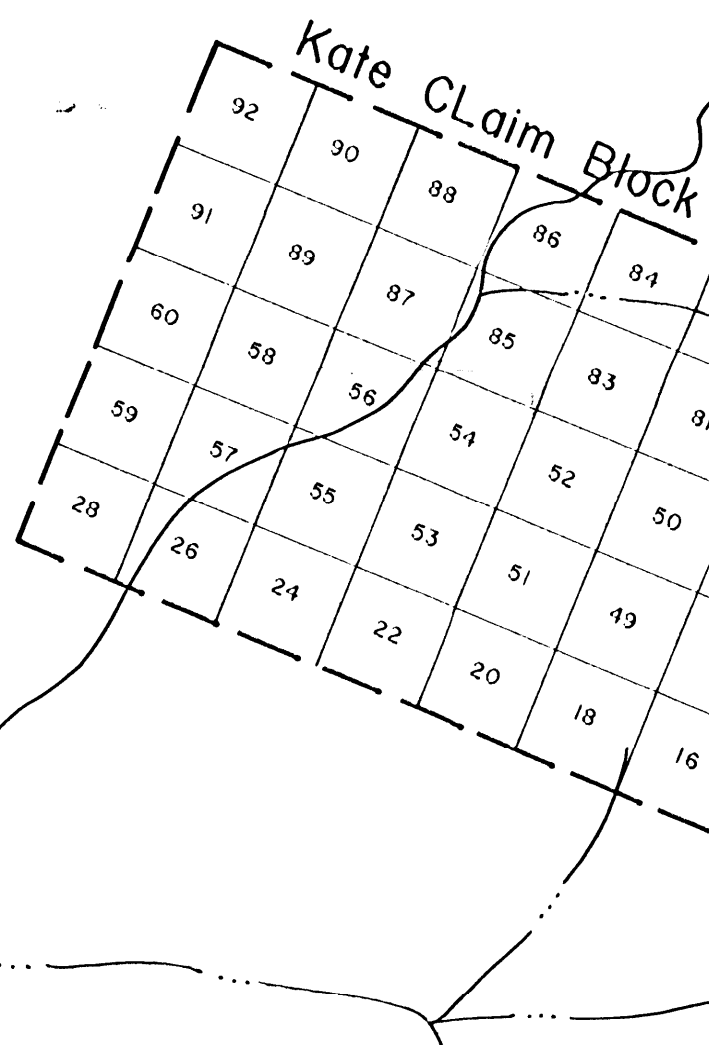
B, 1977

**NON-NEGOTIABLE**

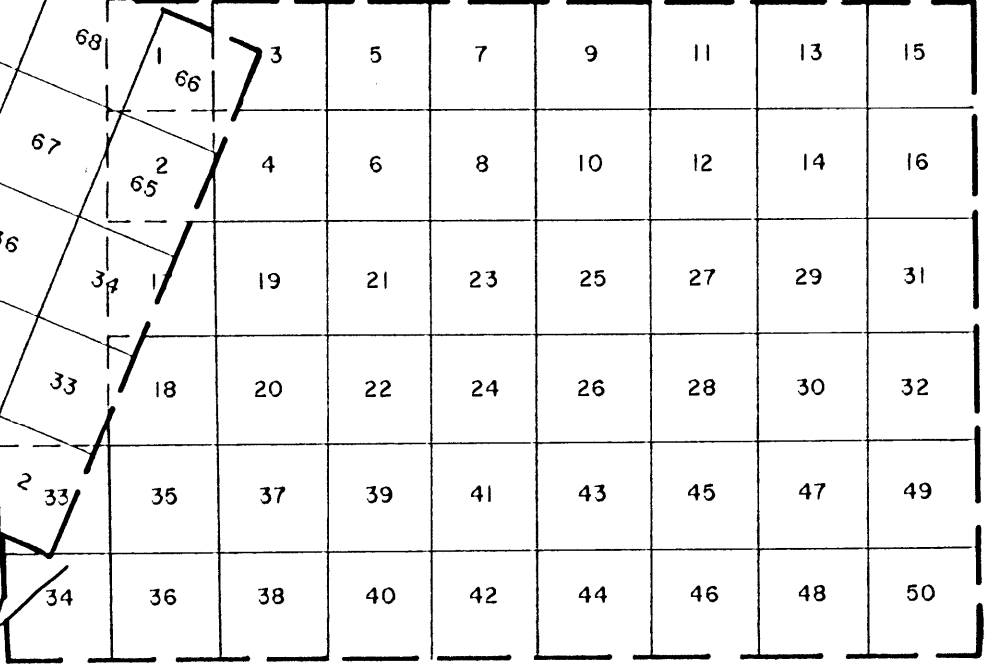
Per \_\_\_\_\_

⑆95280⑉004⑆ 975 4⑉65787⑉

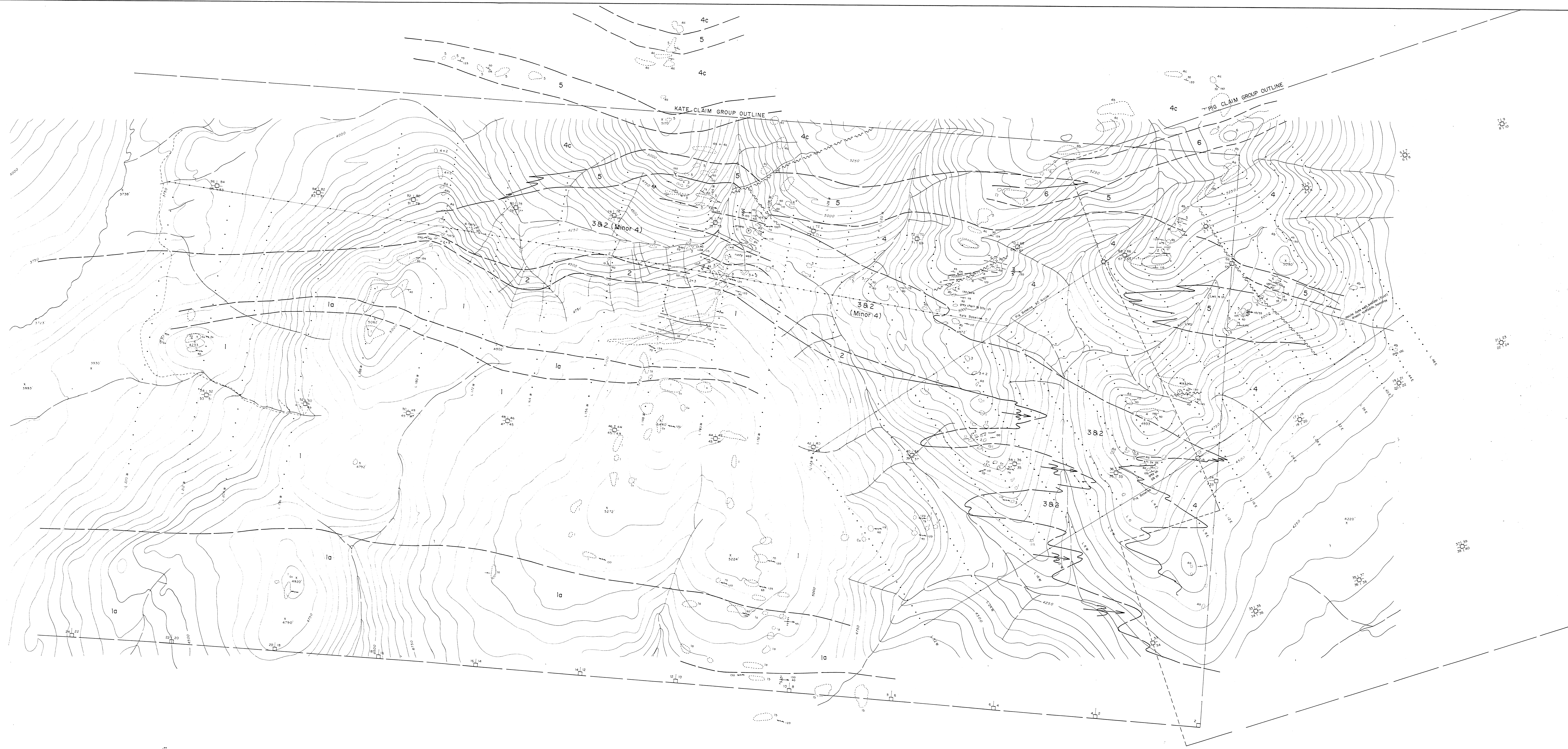
QUANTITY	DESCRIPTION	AMOUNT
	FILING ASSESSMENT WORK: PIG Claims	
	50 clms. for 4 yrs. @\$5.00/claim/year	\$1,000.00
	4 Applications to Group @\$5.00 each	20.00
		1,020.00
DISPOSITION		ACCOUNT
<input type="checkbox"/> Mail to Payee		1903-33
<input checked="" type="checkbox"/> Deliver to Requisitioner		AMOUNT
<input type="checkbox"/> Deliver To		1020 00
<input type="checkbox"/> Deposit to Bank A/C		
APPROVALS:		TOTAL
M. Parker		1020 00
Requisitioner	<b>PAID</b>	ADD. & EXTENS.
Dept. Head		CODING
		O.K. TO PAY
		POSTED
		<b>P</b>



Pig Claim Block



CYPRUS ANVIL MINING CORP.	
MACMILLAN PROJECT	
PIG-KATE GROUP	
CLAIM MAP	
N.T.S. 105-J-2,7 DATE: JANUARY 25, 1978	DRAWN BY: C.L.C. SCALE: 1" = 1/2 MILE



**LEGEND**

Age	Unit	Description
TERTIARY	6	DARK BROWN WEATHERING, DARK GREEN MEDIUM GRAINED DIORITE.
ORDOVICIAN to DEVONIAN	5	LIGHT GREY WEATHERING, INTERBEDDED GREY TO GREENISH GREY SHALE WITH LENSES, POOLS AND THIN BEDS OF LIGHT GREY LIMESTONE.
	4	GREY TO TAN WEATHERING, INTERBEDDED GREY TO BLACK CHERT AND SHALE.
	4c	DARK GREY WEATHERING, BIOTURBATED, INTERBEDDED BLACK AND WHITE CHERT.
	4b	GREY WEATHERING, MASSIVE BEDED GREY TO GREENISH GREY CHERT WITH ELONGATED FRAGMENTS OF BLACK CHERT.
	4a	TAN WEATHERING, LIGHT GREENISH GREY SHALE OFTEN CONTAINING FINE DISSEMINATED PYRITE.
	3	LIGHT GREY TO BLACK WEATHERING, BLACK TO DARK GREY THICK BEDED CHERT WITH MINOR BLACK SHALE PARTINGS.
CAMBRO-ORDOVICIAN	2	SILVER GREY TO BLACK WEATHERING, BLACK GRAPHITIC SILICEOUS SHALE.
	1	WHITE TO BROWN WEATHERING, BANDED WHITE, GREEN AND PURPLE CALC - SILICATES AND HORNIFELD SILICEOUS SHALE.
	1a	SANDY GREY TO TAN LIMESTONE WITH SHALE PARTINGS, POSSIBLE WAVY BANDED LIMESTONE.
	1b	BANDED CALC - SILICATES WITH POOLS AND LENSES OF LIMESTONE.

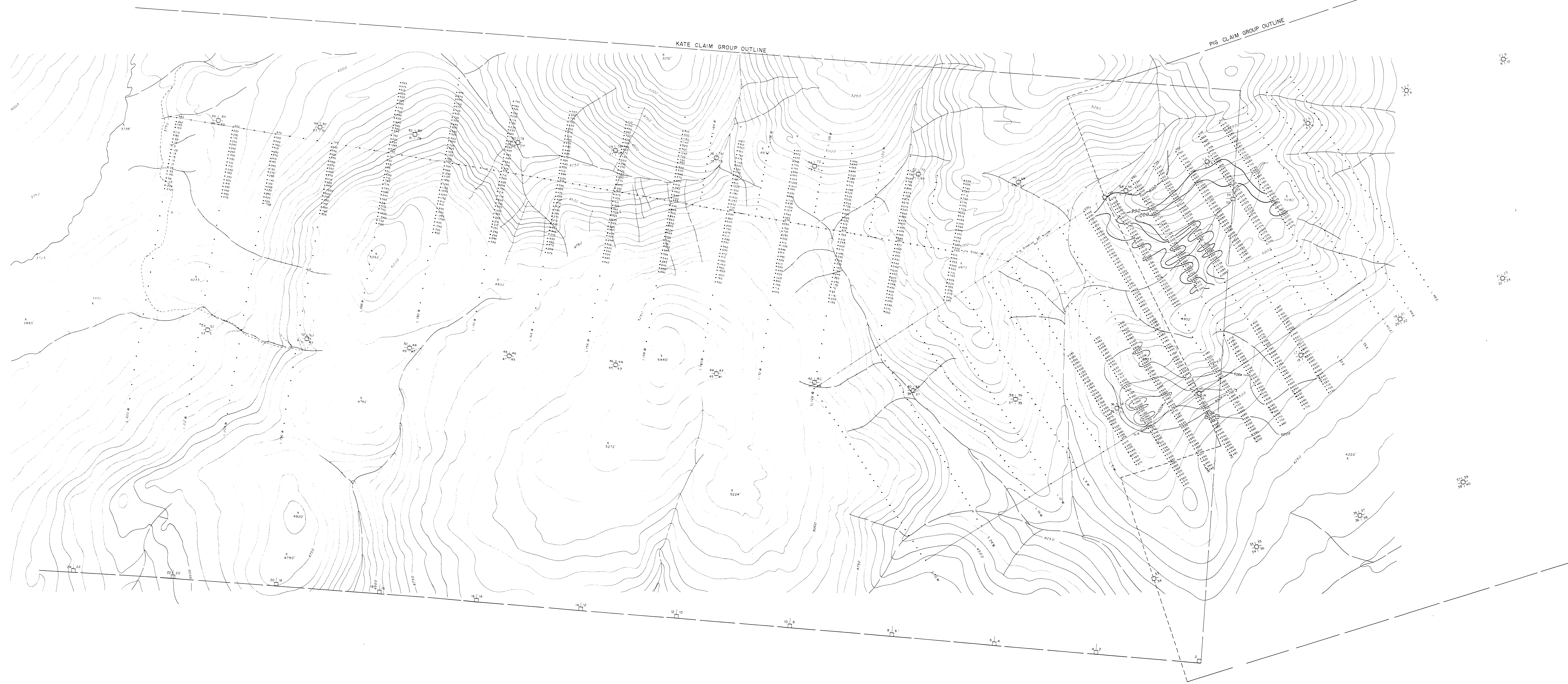
Symbols	
	LIMIT OF OUTCROP
	GEOLOGICAL CONTACTS, DEFINED, ASSUMED
	FAULTS, DEFINED, ASSUMED
	BEDDING
	FOLIATION
	PLUNGING ISOCINAL FOLDS
	SHOWING
	FOSSIL OCCURRENCE

CYPRUS ANVIL MINING CORPORATION  
 MACMILLAN PROJECT  
 PIG-KATE GROUP  
 GEOLOGY MAP

N.T.S.  
 105 - 2 - 2  
 GEOLOGY BY W. ROBERTS, D. KELBY  
 DRAWN BY C. L. CORY  
 DATE: DECEMBER 29, 1977

Scale: 1" = 400'

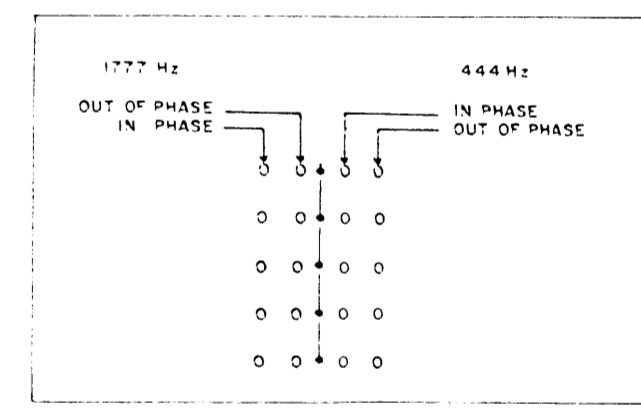
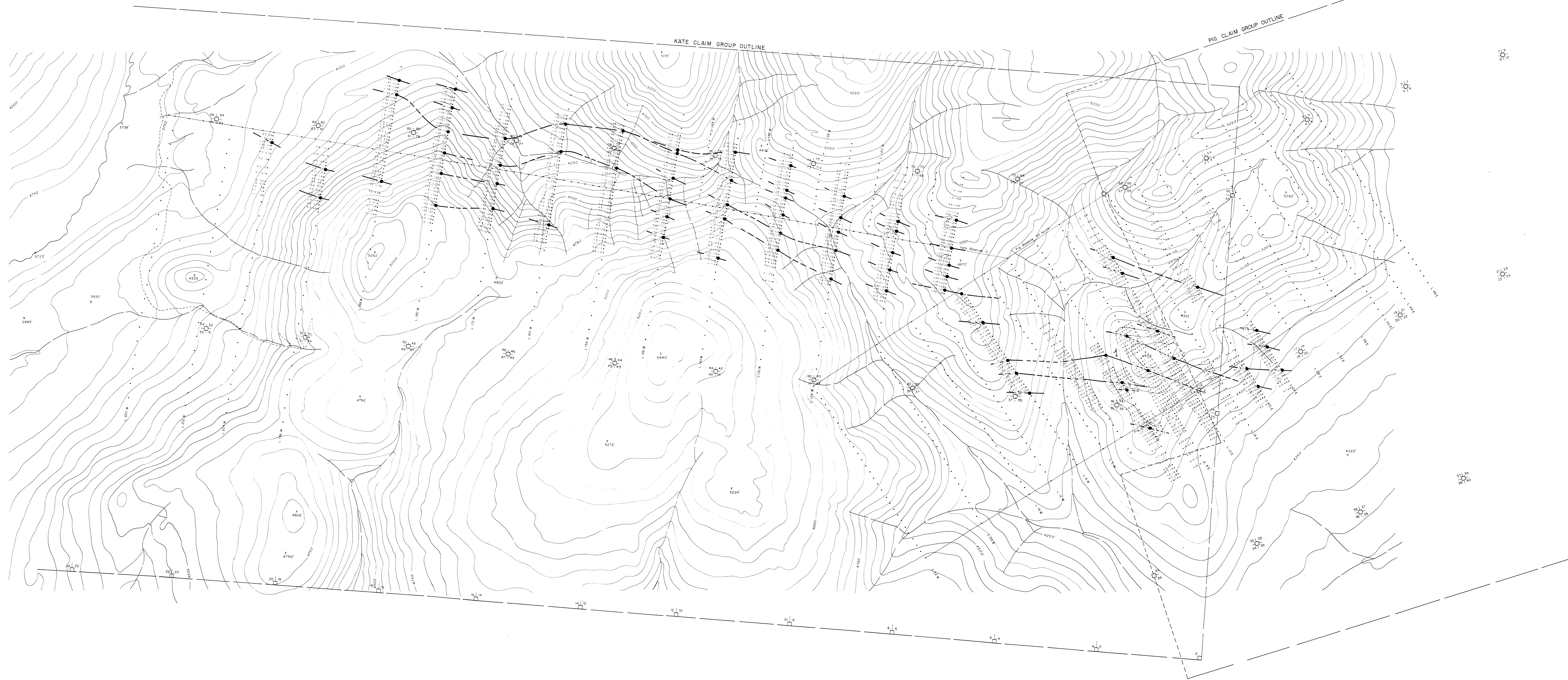




LEGEND  
 ALL VALUES IN GAMMAS (G)  
 CONTOUR INTERVAL 600, 800, 1000, 1200 &  
 SURVEY DONE BY: M. KILBY

CYPRUS ANVIL MINING CORPORATION  
 MACMILLAN PROJECT  
 PIG-KATE GROUP  
 GROUND MAGNETOMETER SURVEY

N.T.S.  
 105-2-2.7  
 DRAWN BY: C.L. GORY  
 DATE: DECEMBER 1977  
 Scale: 1" = 400'



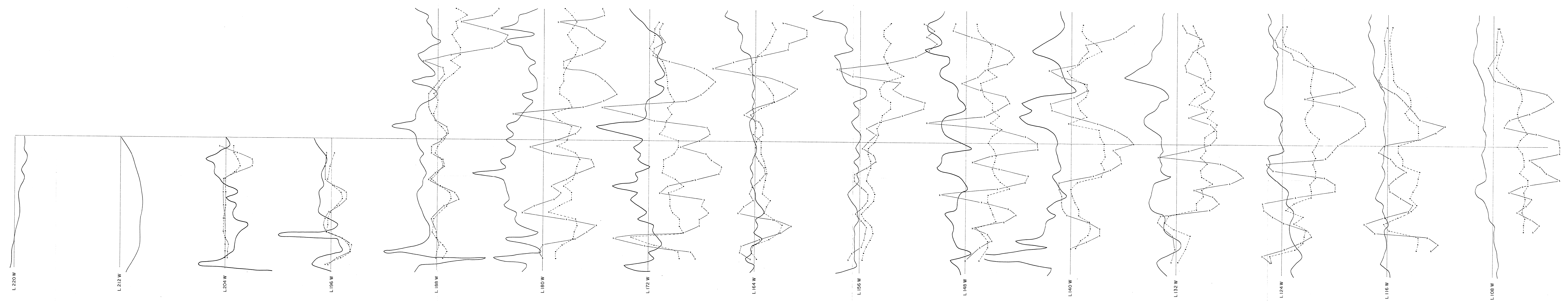
—●— CONDUCTOR AXIS

COIL SPACING - 200 Feet

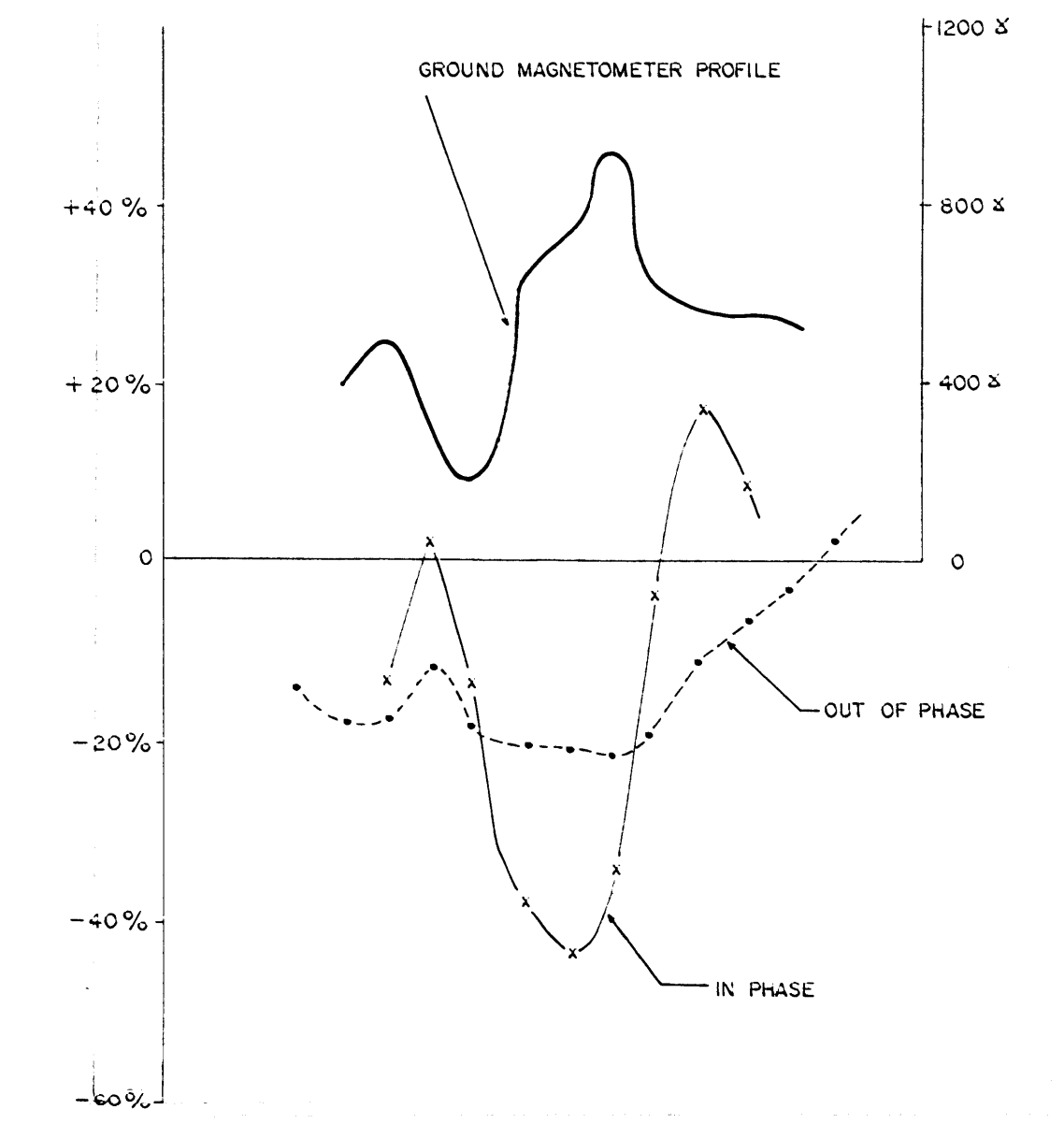
FIELD WORK DONE BY J. JOHNSTON  
 S. FRETWELL  
 M. KIRBY

CYPRUS ANVIL MINING CORPORATION	
MACMILLAN PROJECT	
PIG-KATE GROUP	
HEM SURVEY	
N.T.S. 105-J-2,7 DRAWN BY: C. L. EDRY DATE: DECEMBER 1977	<p>Scale 1" = 400'</p>

10 N  
8 N  
6 N  
4 N  
2 N  
B.L.  
2 S  
4 S  
6 S  
8 S  
10 S



10 N  
8 N  
6 N  
4 N  
2 N  
B.L.  
2 S  
4 S  
6 S  
8 S  
10 S



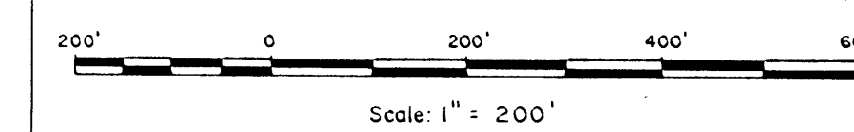
CYPRUS ANVIL MINING CORPORATION

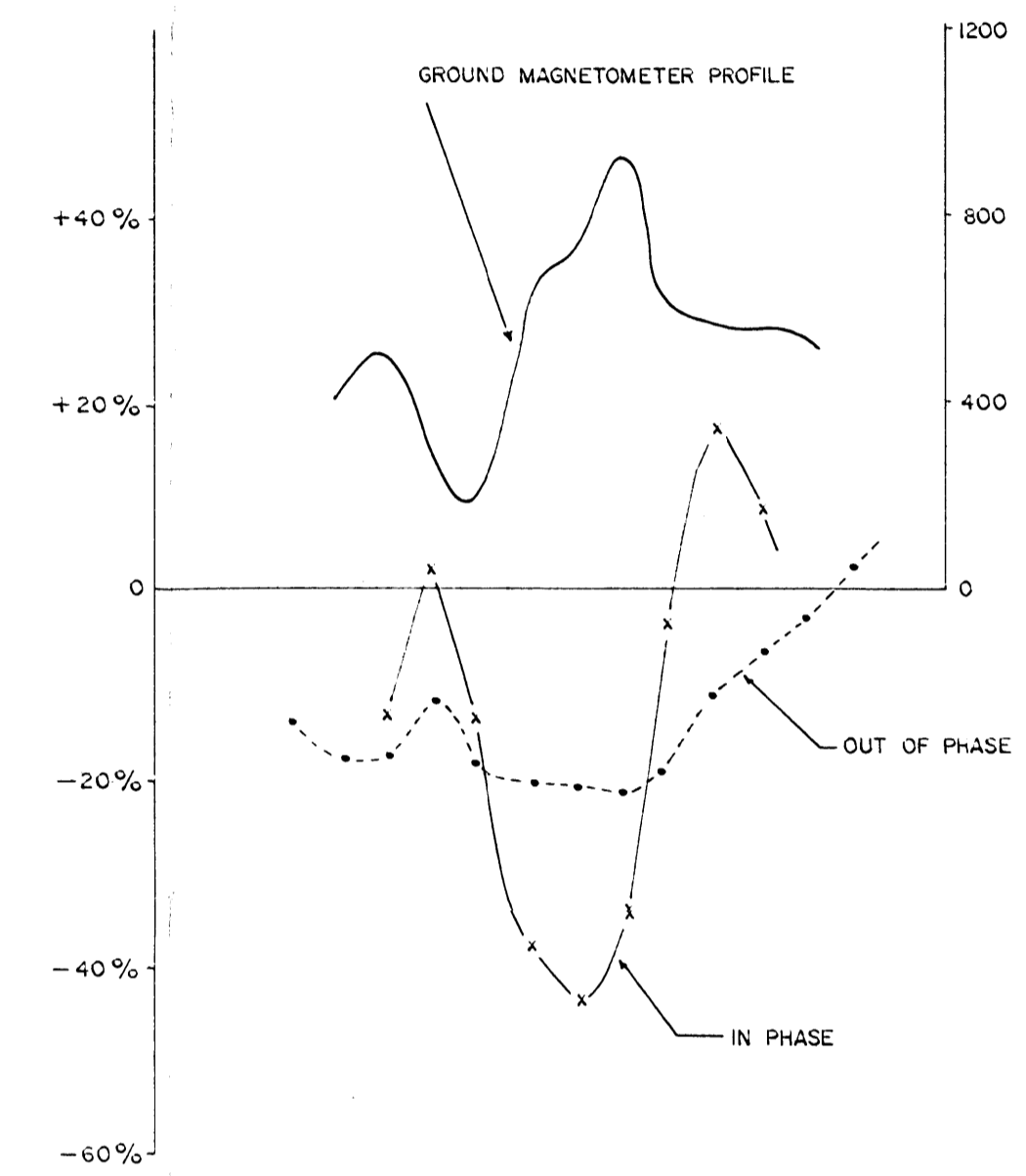
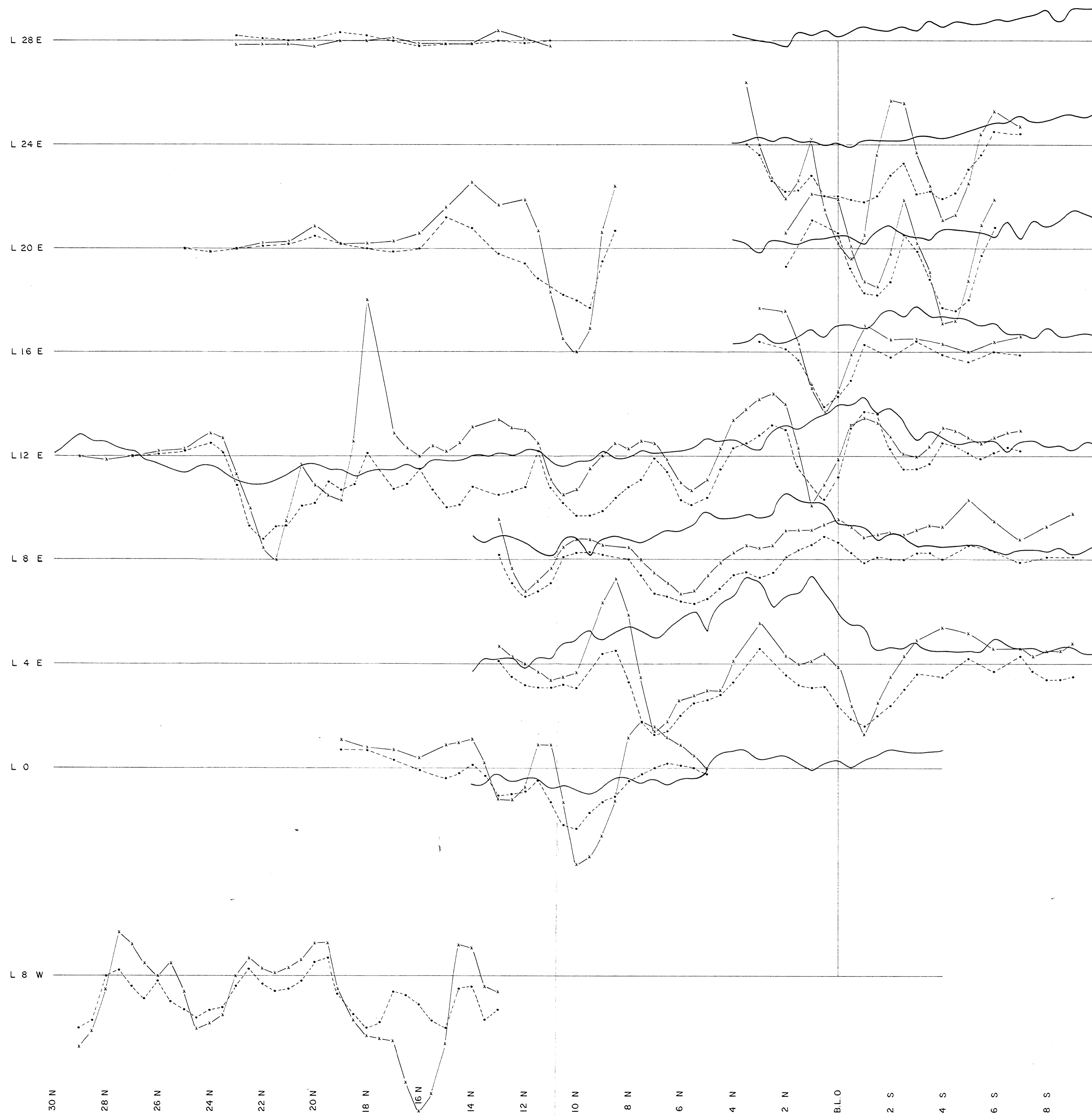
MACMILLAN PROJECT

PIG-KATE GROUP

HEM & MAGNETOMETER PROFILES

N.T.S.  
105 - J - 2, 7  
DRAWN BY: C. L. CORY  
DATE: JANUARY 18, 1978





CYPRUS ANVIL MINING CORPORATION

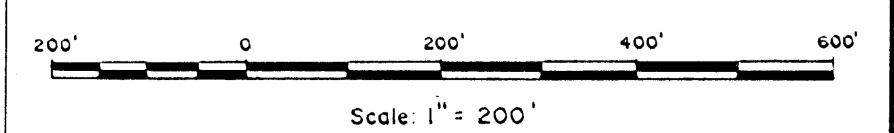
MACMILLAN PROJECT

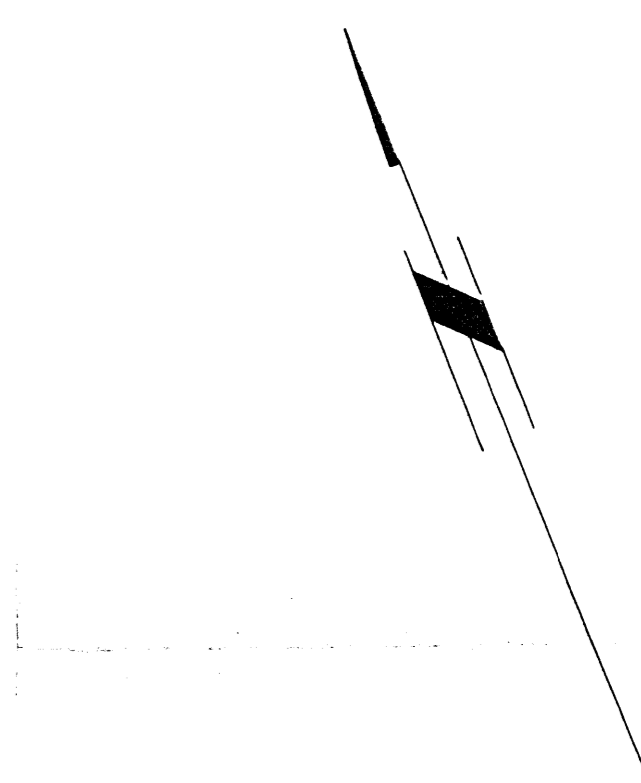
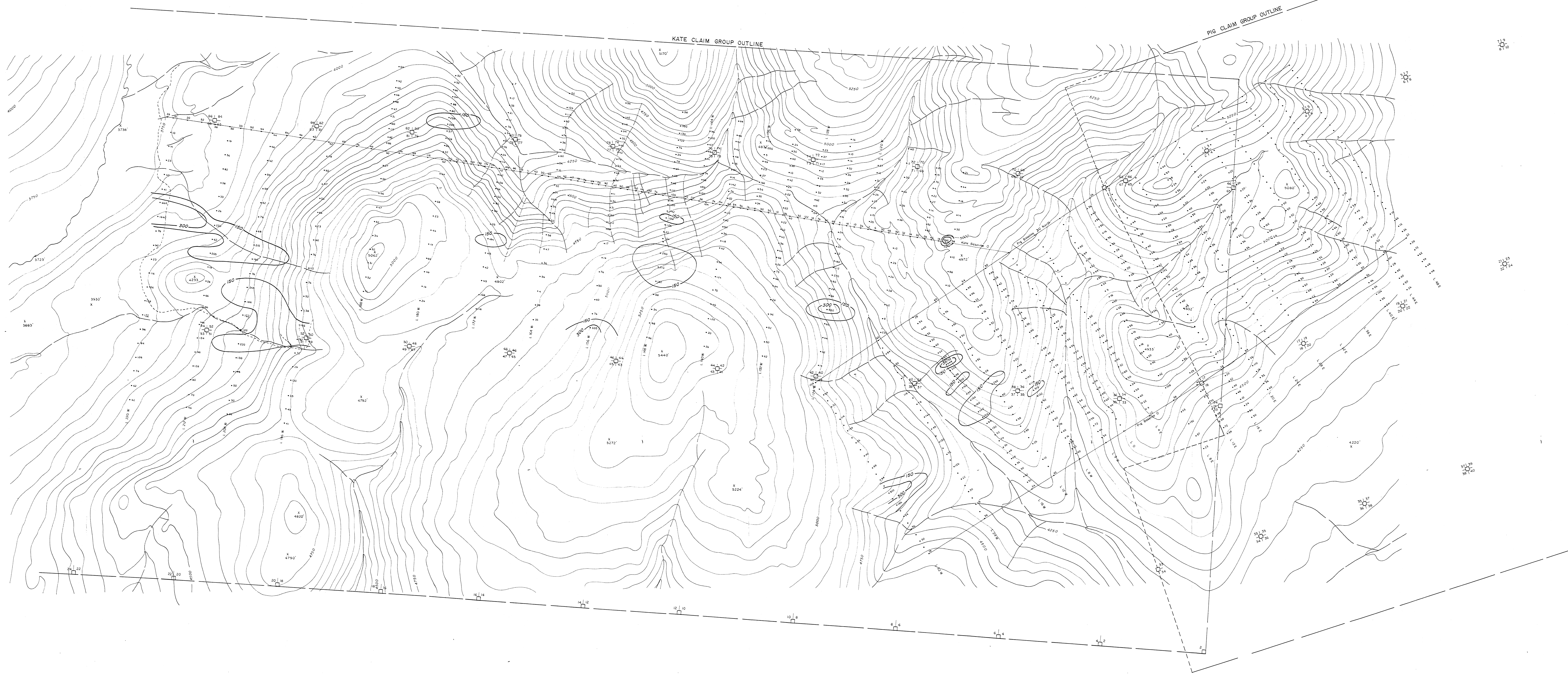
PIG-KATE GROUP

HEM & MAGNETOMETER PROFILES

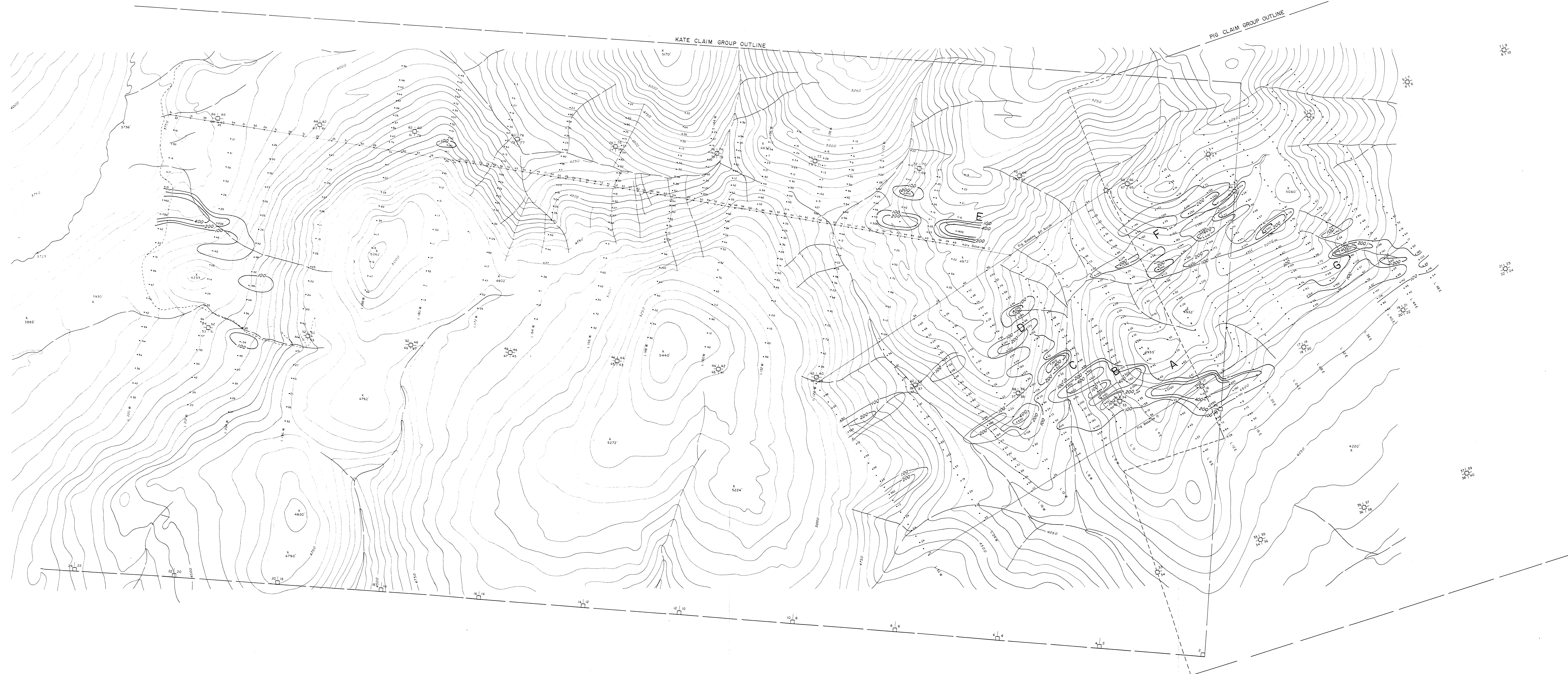
N.T.S.  
105-J-2,7

DRAWN BY: C. L. CORY  
DATE: JANUARY 20, 1978



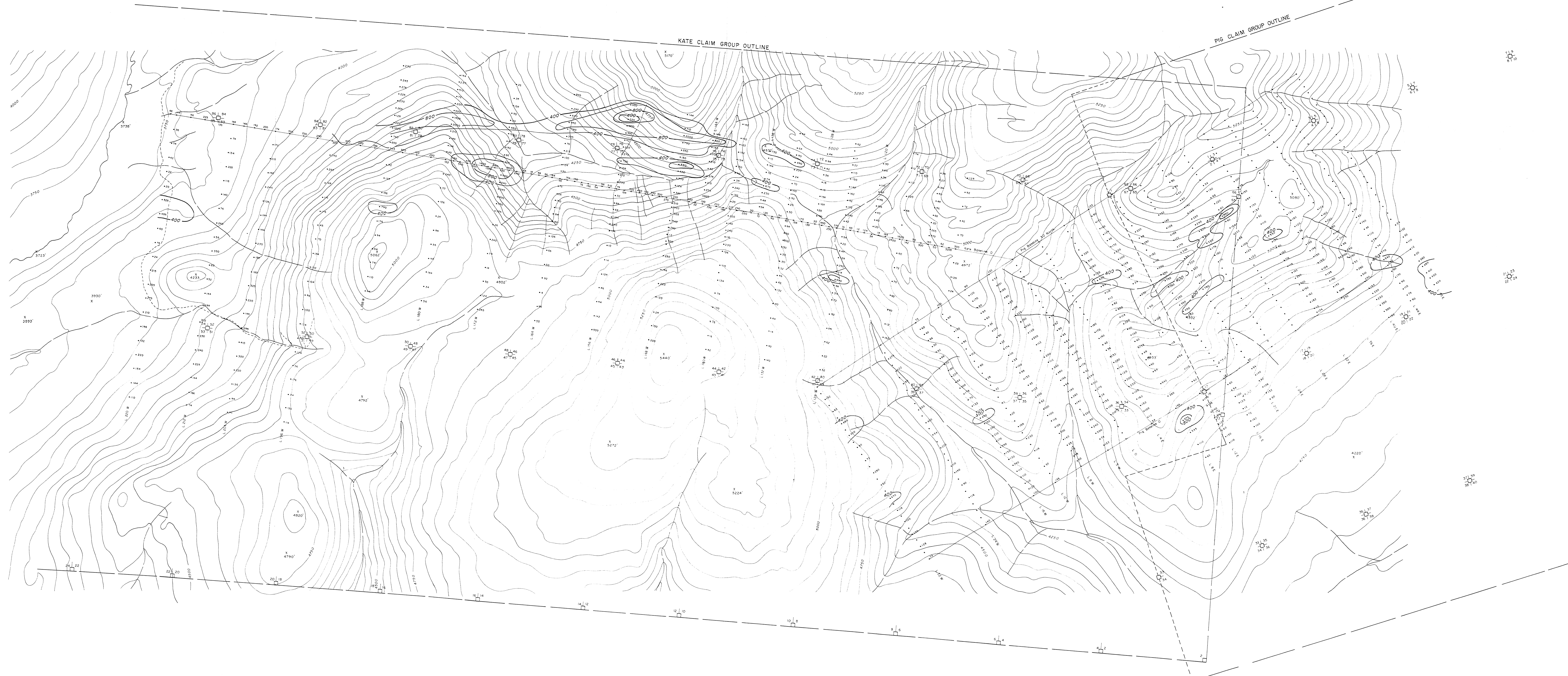


CYPRUS ANVIL MINING CORPORATION	
MACMILLAN PROJECT	
PIG-KATE GROUP	
GEOCHEMICAL VALUES MAP - COPPER	
N.T.S. 105-J-2,7 DRAWN BY: C. L. CORY DATE: DECEMBER 1977	 Scale 1" = 400'



CYPRUS ANVIL MINING CORPORATION  
 MACMILLAN PROJECT  
 PIG-KATE GROUP  
 GEOCHEMICAL VALUES MAP - LEAD

N.T.S.  
 105-4-2.7  
 DRAWN BY C. L. CORY  
 DATE: DECEMBER 1977  
 Scale: 1" = 400'



CYPRUS ANVIL MINING CORPORATION	
MACMILLAN PROJECT	
PIG-KATE GROUP	
GEOCHEMICAL VALUES MAP - ZINC	
N.T.S. 105-1-2,7 DRAWN BY: C.L. CORY DATE: DECEMBER 1977	<p>Scale 1" = 400'</p>