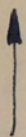


105J
NW Corner 113

A 12371-24

S. Machullan R

105 J/13



SCS
69-15

SCS
69-16

X
SCS
69-19

G.R. Sanford

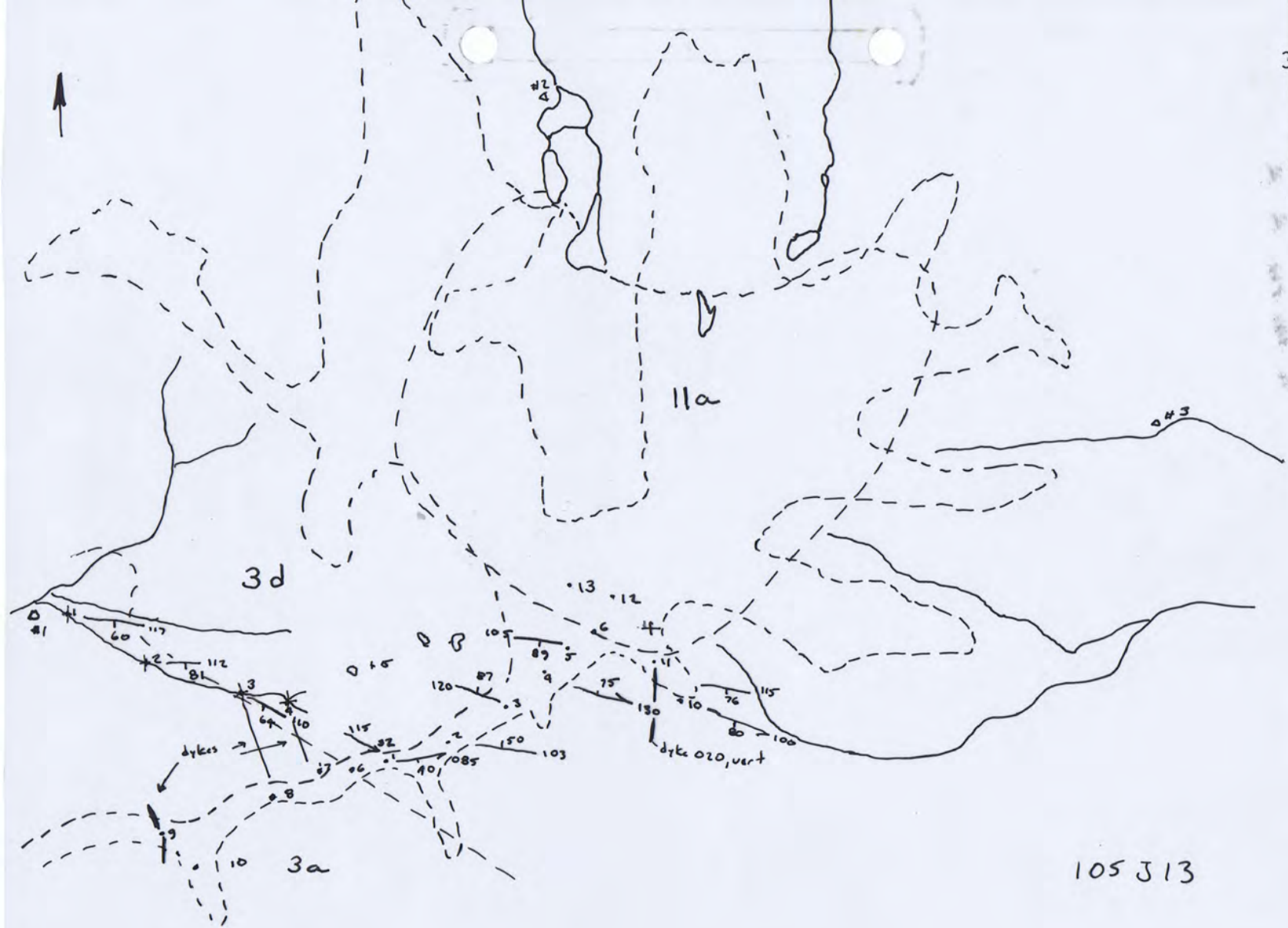
S.lts

31 May 69

SGS 69-14
-16

PLOTTED ON MAP

JUNE 15-'69 F.V.



105 J 13

Geological Mapping

G. Sanford

16 Aug 68

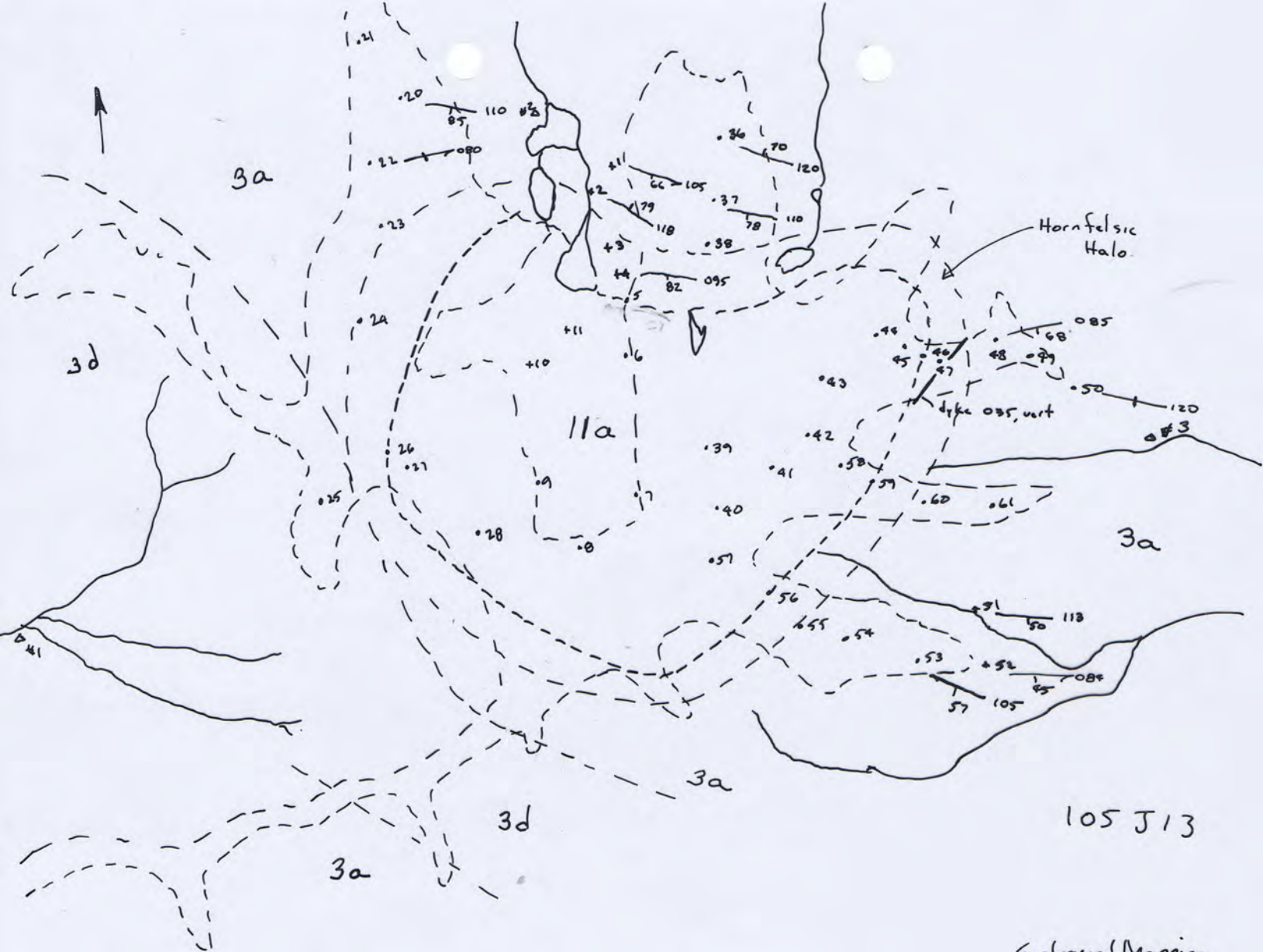
Rx GS-68-446
460

18 Aug 68

Rx GS-68-461
473

PLOTTED ON GEOLOGIC MAP

AUG. 29/8



Geological Mapping
G. Sanford

19 Aug 68
Rx 65-68-479
-486

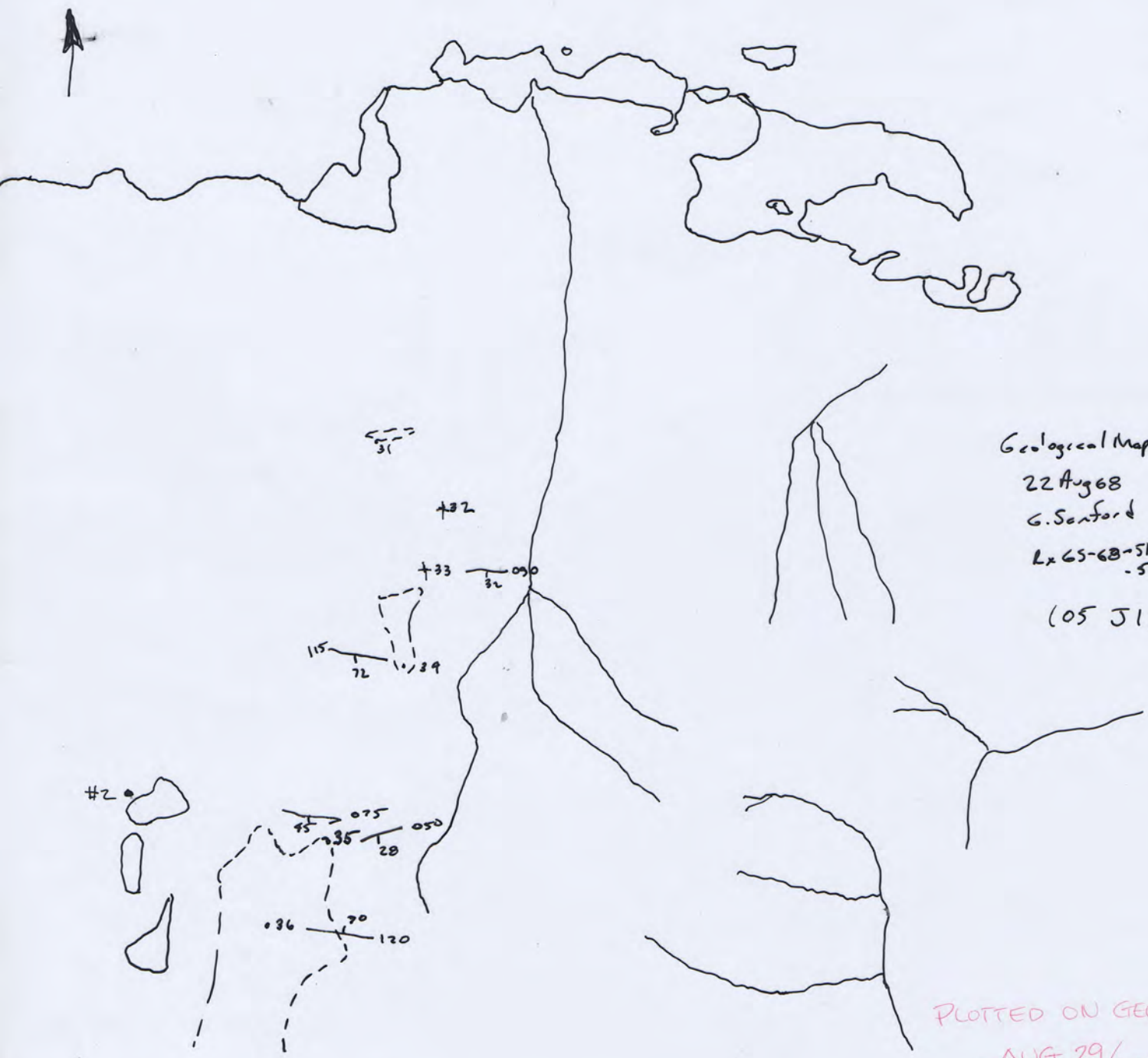
20 Aug 68
Rx 65-68-500
508

21 Aug 68
Rx 65-68-509
-513

22 Aug 68
Rx 65-68-519
-538

23 Aug 68
Rx 65-68-539
-559

PLOTTED ON GEOLOGIC MAP
AUG 29/8 68.



Geological Mapping
22 Aug 68
G. Sanford
Lx 65-68-514
-538
105 J13

PLOTTED ON GEOLOGIC MAP
AUG 29/68 *[Signature]*

Geological Mapping
G. Sanford
19 Aug 68

Rx GS-68-428
-440

105813

3d

64 110

+5

+4
+3

+2

3a

115 75 +1

+11 +10 87 090 +8

+12

+9

+7

79 093

+6 75 075

Comp 1

+20

+18

+19

+16

3a

+17

+36

012189-20

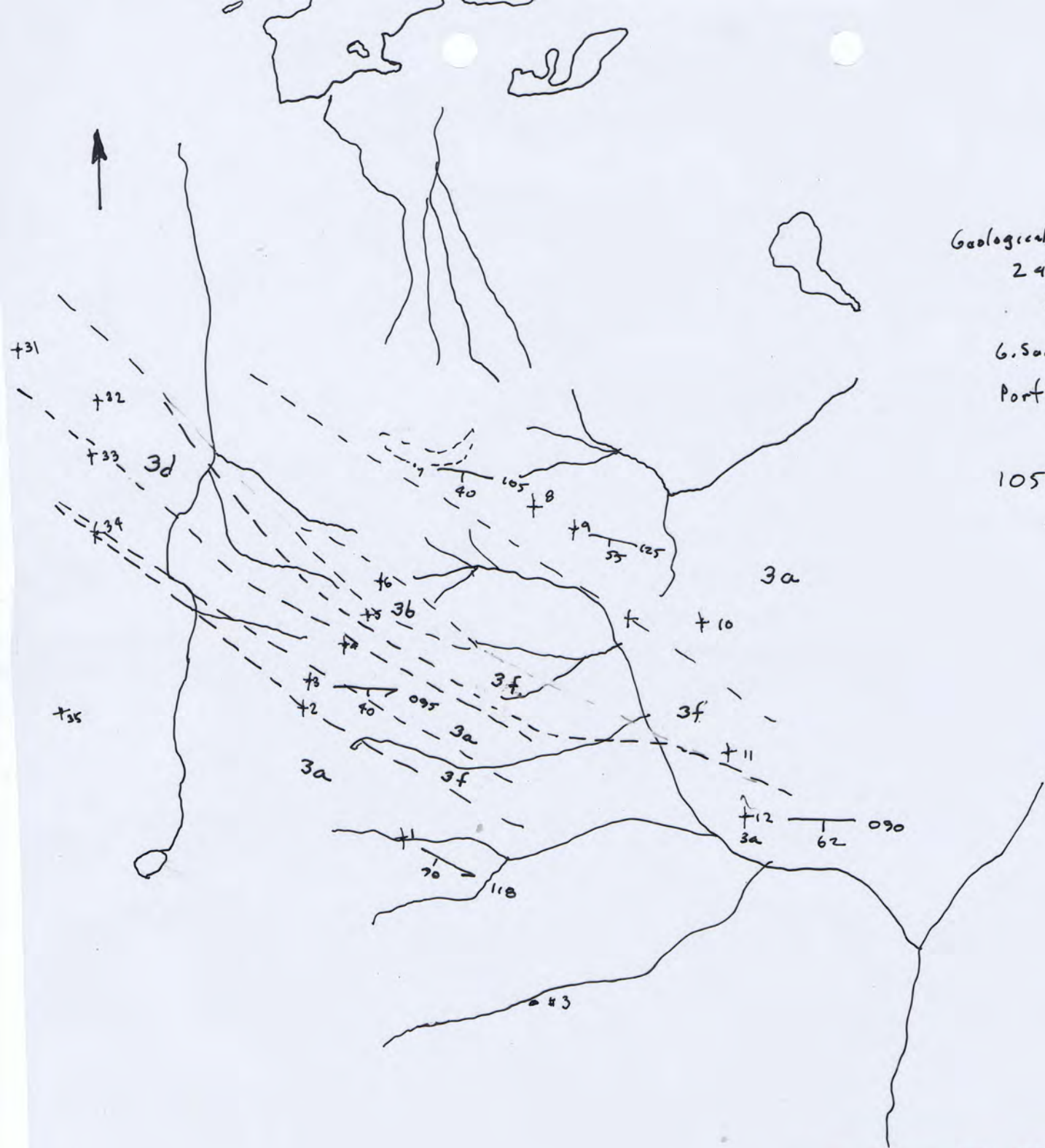
x

PLOTTED ON GEOLOGY MAP
AUG. 29/68 ϕ

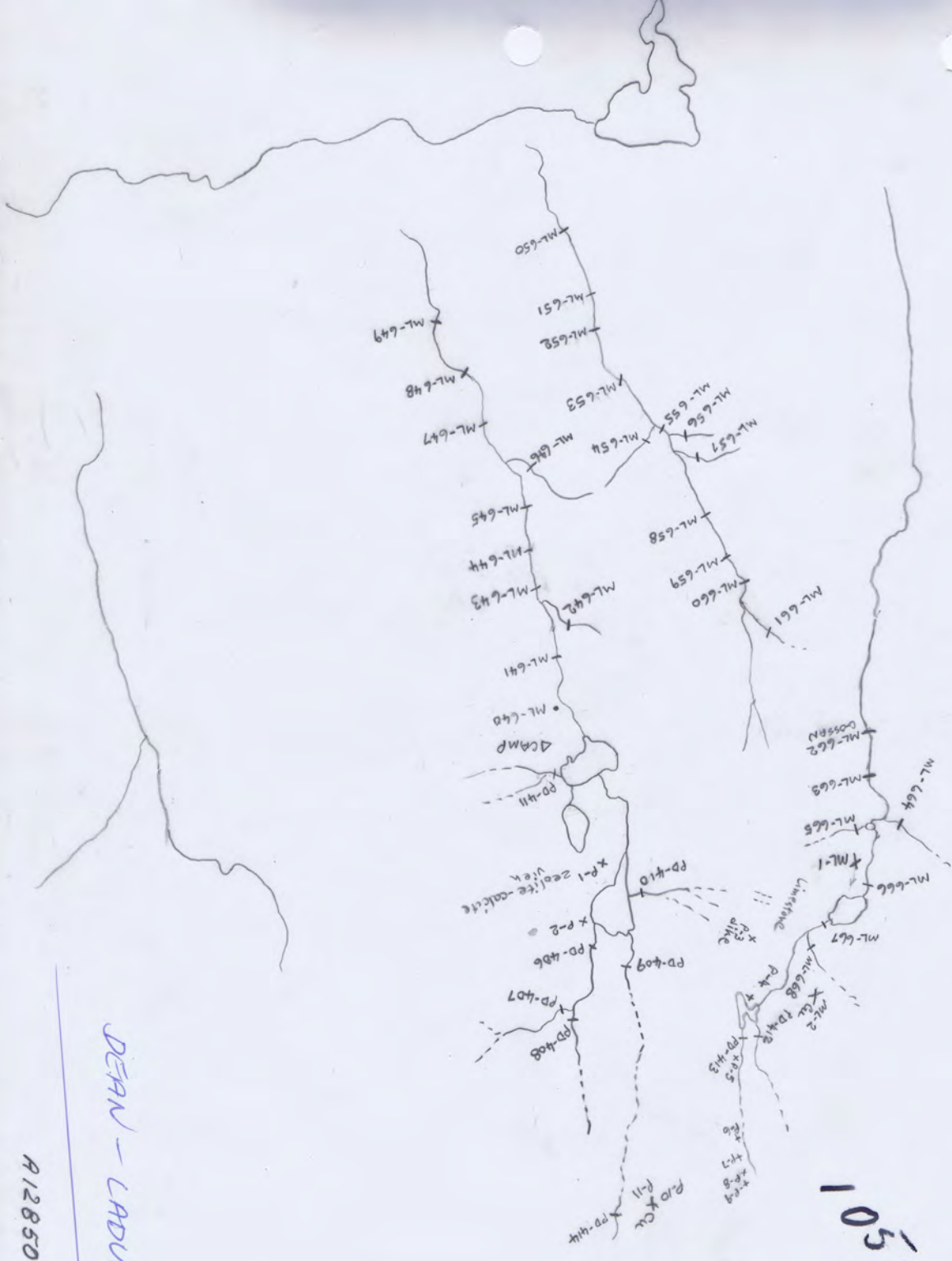
Geological Mapping
 24 Aug 68
 Rx 65-68-560
 -667

G. Sanford
 Portions of
 22 Aug 68

105 J 13



PLOTTED ON GEOLOGIC MAP
 AUG 29/8 \$



DEAN - LABUE

A12850-92

105-1-13

PLOTTED

AUG. 27/68
AUG. 28/68

Φ

MACR LAD E
 AUG. 20 1968

Silt

SAMPLE #	QUARTZ	Gossan	Sand	silt, etc.	Stream width
ML-68-640	✓			✓	6
641				✓	6
642				✓	1
643				✓	6
644				✓	7
645			✓	✓	8
646			✓	⊗	8 1
647				✓	8
648				✓	8
649				✓	8
ML-68-650				✓	3
651				✓	3
652				✓	3
653			✓		3
654				✓	1
655				✓	3
656				✓	1
657				✓	1
658				✓	3
659				✓	2
ML-68-660				✓	2
661			✓		1
662		Gossan		✓	3
663				✓	3
664				✓	1
665				✓	1
ML-68-666				✓	2
667				✓	2
668				✓	1



105-1-13

MYACK LABUE
AUG '68

PLOTTED
AUG. 27/68

ML-639, 14, 16, 17

912178-261

ATLAS EXPLORATIONS LIMITED

105-5-13

GEOCHEMICAL STREAM SEDIMENT SURVEY DATA

SAMPLER... MACK LADUE

PHOTO NUMBER... A. 121. 78-261

DATE... 14 AUG 1968

Office Use Only		
Map.....		
Date Plotted.....		
Plotter.....		

Sample No.	Quartz P or A	Gossan or Min	Soil		Silt ✓		Stream Width	Remarks	Analytical Results		
			Sand	Silt	Clay	Organic			Cu	Pb	Zn
615			✓				5				
616			✓				3				
617			✓				2				
618			✓				6				
619				✓			2				
620				✓			6				
621			✓				6				
622				✓			7				
623				✓			7				
624				✓			2				
625			✓				8				
626			✓				8				
627			✓				8				
628			✓				2				
629			✓				8				
630				✓			8				

ATLAS EXPLORATIONS LIMITED

GEOCHEMICAL STREAM SEDIMENT SURVEY DATA

SAMPLER..... P. DEAN

PHOTO NUMBER.....

DATE..... August 1968

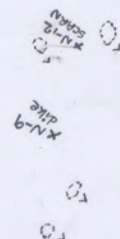
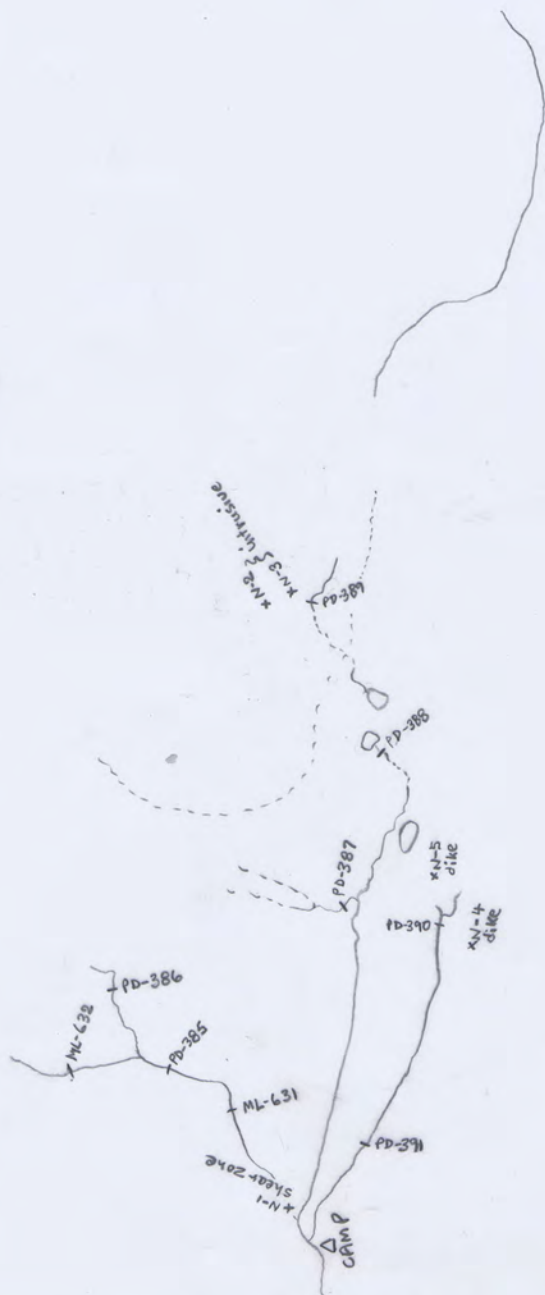
Office Use Only

Map.....

Date Plotted.....

Plotter.....

Sample No.	Quartz P or A	Gossan or Min	Soil		Silt		Stream Width	Remarks	Analytical Results		
			Sand	Silt	Clay	Organic			Cu	Pb	Zn
68-385	P	—		✓			2 FT				
386	"	—		✓			1½				
387	"	—		✓			1				
388	"	—		✓			1				
389	"	—		✓			1½				
390	"	—		✓			2				
391	"	—		✓			2½				
392	"	—		✓			2½				
393	"	—	✓				1½				
394	"	—	<hr/>					SOIL			
395	"	—		✓			1				
396	"	—		✓			2				
397	"	—		✓			2				
398	"	—		✓			1				
399	"	—		✓			dry	(underground)			
400	"	—		✓			3½				



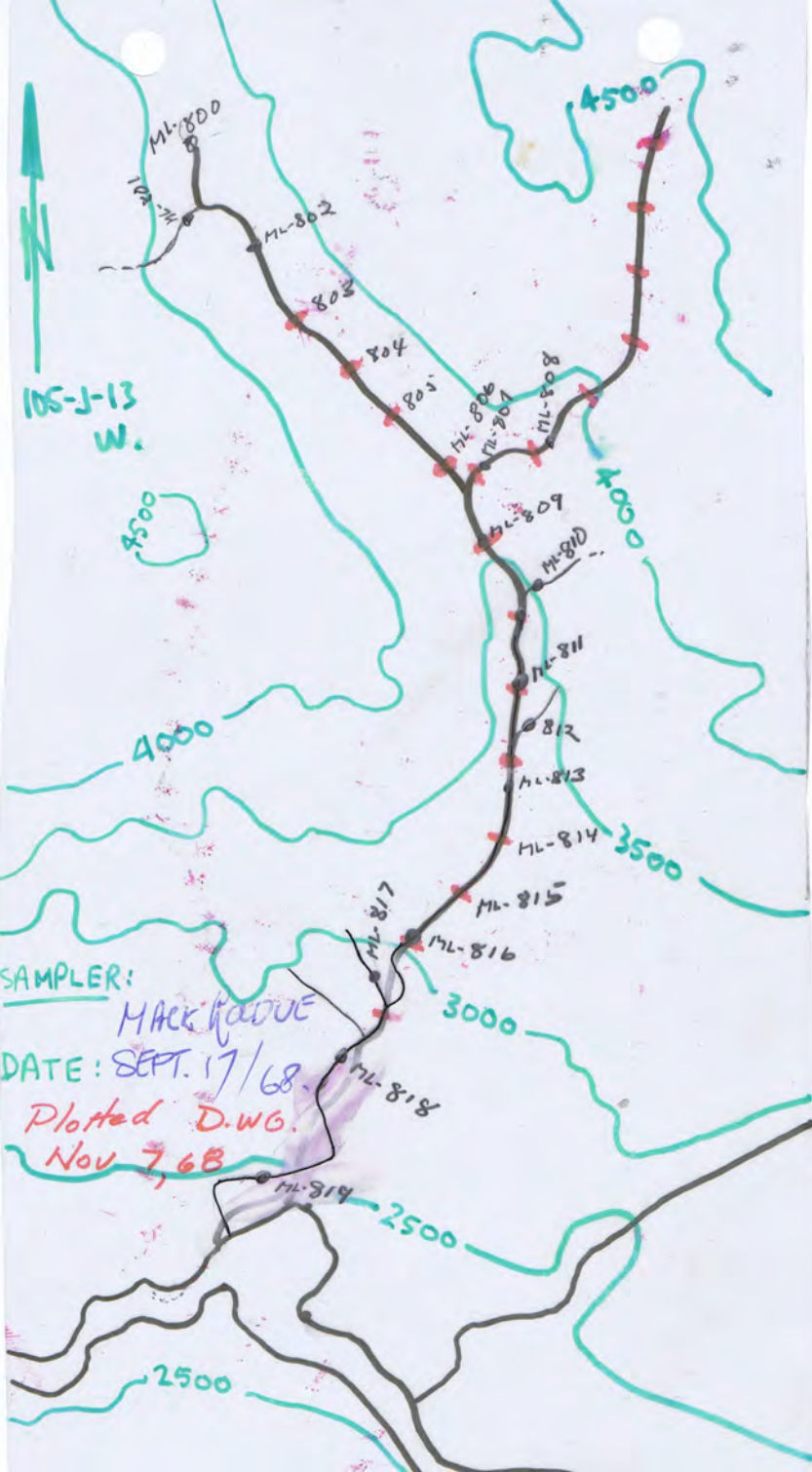
PLOTTED
 AUG. 26/68

PETE DEAN
 MARI LAQUE
 AUG '68

A12850-91



105-J-13
W.



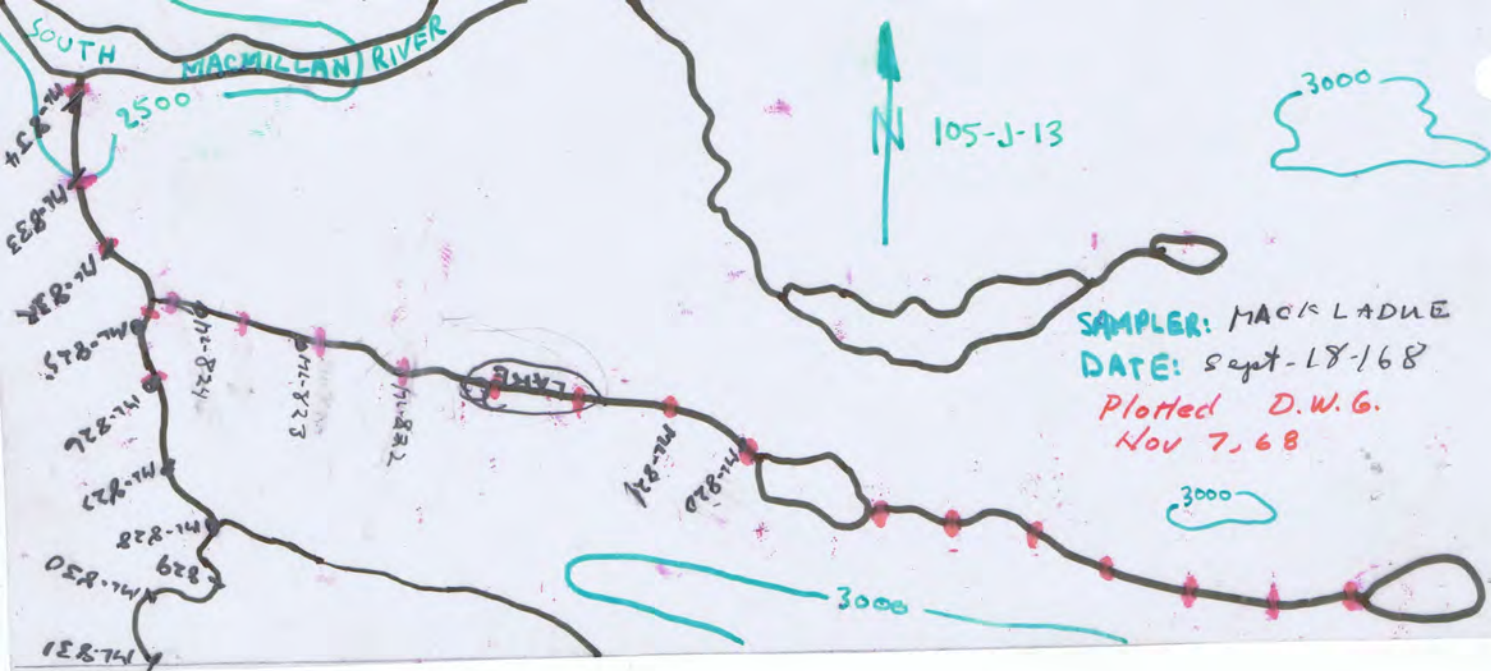
SAMPLER:

MAck KADUE

DATE: SEPT. 17/68.

Plotted D.W.G.

Nov 7, 68



SOUTH MACMILLAN RIVER

N 105-J-13

3000

SAMPLER: MACK LADUE
DATE: Sept-18-1968
Plotted D.W.G.
Nov 7, 68

LAKE

3000

3000

ML-824
ML-825
ML-826
ML-827
ML-828
ML-829
ML-830
ML-831

ML-823

ML-822

ML-821

ML-820

ATLAS EXPLORATIONS LIMITED

GEOCHEMICAL STREAM SEDIMENT SURVEY DATA

SAMPLER MACK LADUE

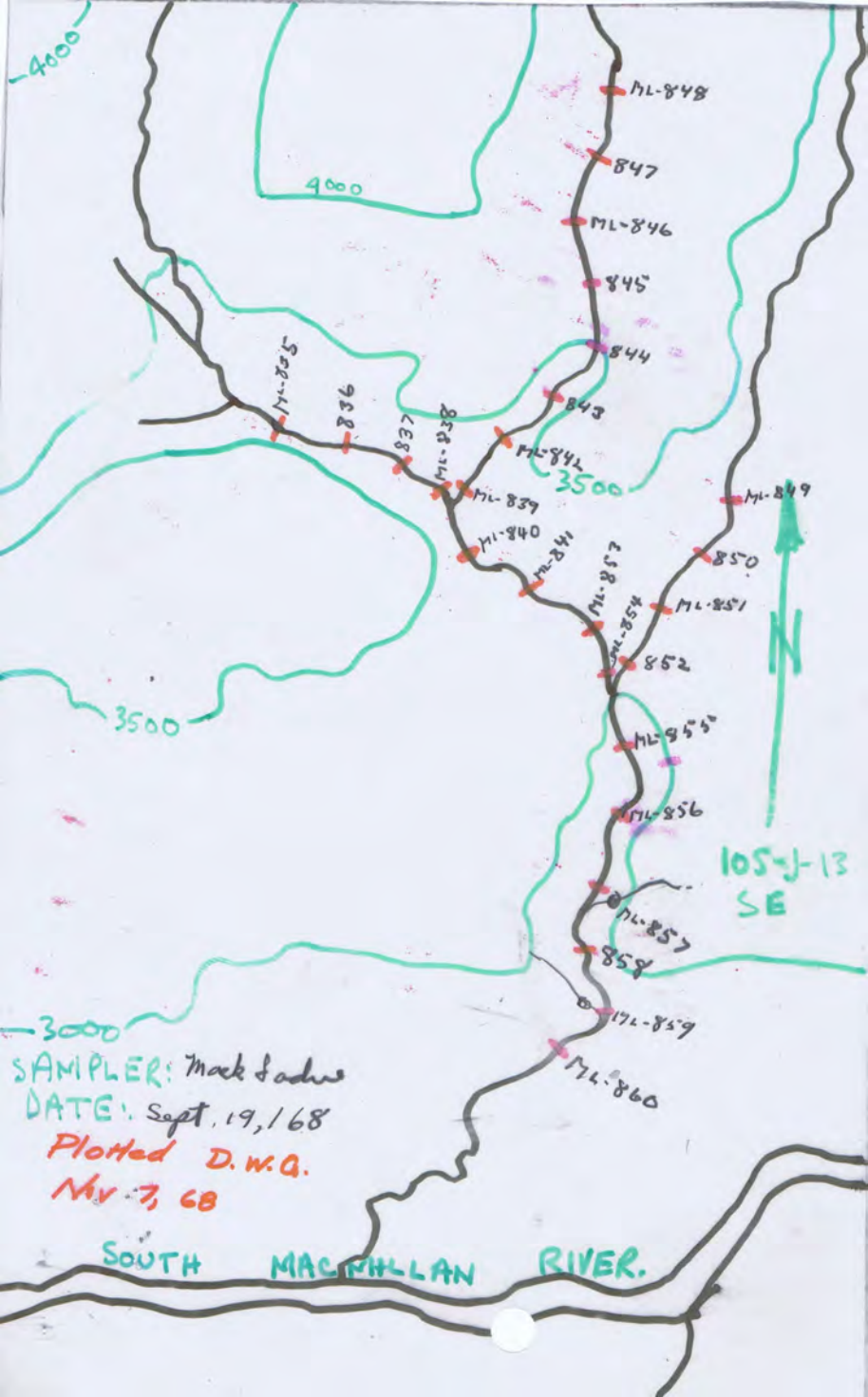
PHOTO NUMBER.....

DATE Sept-18-1968

605-J-13

<u>Office Use Only</u>		
Map.....		
Date Plotted.....		
Plotter.....		

Sample No.	Quartz P or A	Gossan or Min	Soil		Silt		Stream Width	Remarks	Analytical Results		
			Sand	Silt	Clay	Organic			Cu	Pb	Zn
^{ML-68-} 820				✓			2				
821				✓			2				
822				✓			4				
823				SOIL			4				
824				SOIL			5				
825				✓			16				
826				✓			16				
827			✓				17				
828				✓			16				
829				✓			16				
830				✓			16				
^{ML-68-} 831				✓			15				
832			✓	✓			16				
833				✓			17				
834				✓			17				



SAMPLER: Mark Sadus
DATE: Sept. 19, 1968
Plotted D.W.G.
Nov. 7, 68

105-J-13
SE

SOUTH MACMILLAN RIVER.

ATLAS EXPLORATIONS LIMITED

GEOCHEMICAL STREAM SEDIMENT SURVEY DATA

SAMPLER. MACK... LADUE.....

PHOTO NUMBER. 105-J-13.....

DATE. 19... Sept... 1968.....

Office Use Only

Map.....

Date Plotted.....

Plotter.....

Sample No.	Quartz P or A	Gossan or Min	Soil		Silt ✓		Stream Width	Remarks	Analytical Results		
			Sand	Silt	Clay	Organic			Cu	Pb	Zn
835				✓			7				
836				✓			7				
837				✓			8				
838				✓			8				
839				✓			4				
840				✓			8				
841				✓			8				
842				✓			4				
843				✓			4				
844				✓			3				
845				✓			3				
846				✓			3				
847				✓			3				
848				✓			3				
849				✓			8				
850				✓			8				



ATLAS EXPLORATIONS LIMITED

GEOCHEMICAL STREAM SEDIMENT SURVEY DATA

SAMPLER... FRANK C. HARLIE.....

PHOTO NUMBER.....

DATE... SEPT. 9/68.....

Office Use Only

Map.....

Date Plotted.....

Plotter.....

Sample No.	Quartz P or A	Gossan or Min	Soil		Silt		Stream Width	Remarks	Analytical Results		
			Sand	Silt	Clay	Organic			Cu	Pb	Zn
EC. 68-201	✓		gravel & sand				2'				
EC. 68-202	✓		gravel & sand			✓	2 1/2'				
EC. 68-203	✓		gravel & sand			✓	1 1/2'	R. 100' up side			
EC. 68-204	✓		gravel & sand				3'				
EC. 68-205	✓		gravel & sand				1'	R. 50' up side			
EC. 68-206	✓		gravel & sand				3'				
EC. 68-207	✓		sandy gravel				3 1/2'				
EC. 68-208	✓		sandy gravel				3 1/2'				
EC. 68-209	✓		gravel & sand				5'				
EC. 68-210	✓		sandy gravel — organic				5'				
EC. 68-211	✓		clay & gravel				5'				
EC. 68-212	✓		sand				10'				
EC. 68-213	✓		sand				6'				
EC. 68-214	✓		sand & gravel				6 1/2'				
EC. 68-215	✓		sand & gravel				6'				
EC. 68-216	✓		sandy gravel				1 1/4'	R. 50' up side			

Plotted D.W.G.
Nov. 7, 68

SOUTH MACMILLAN RIVER.

Pick up

SAMPLER: A. Charlie
DATE: Sept 26/68

* only

DROP OFF

108-J-13
SE.



ATLAS EXPLORATIONS LIMITED

GEOCHEMICAL STREAM SEDIMENT SURVEY DATA

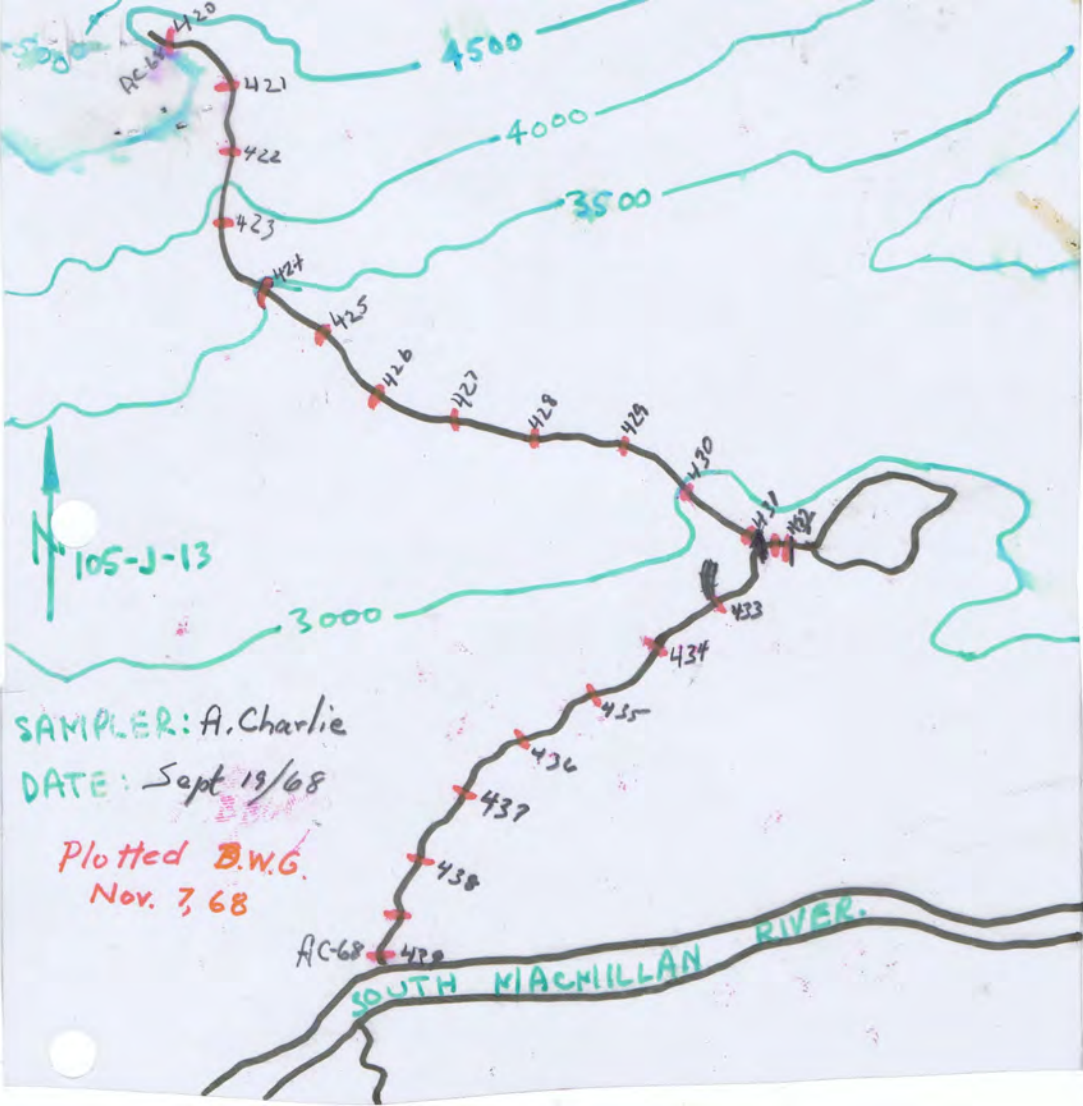
SAMPLER..... *Alfred Charlie*

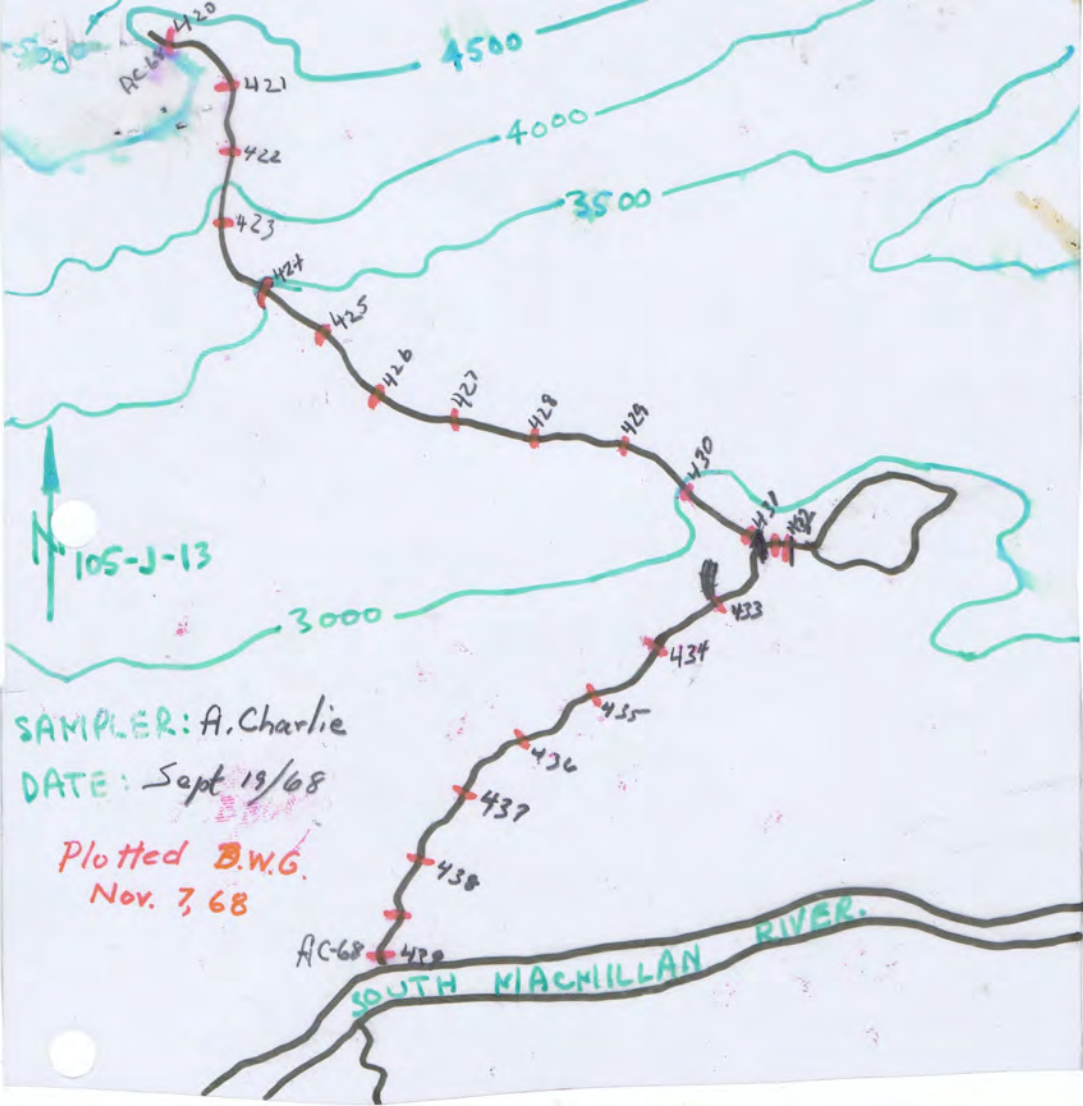
PHOTO NUMBER.....

DATE..... *Sept 26/68*

Office Use Only		
Map.....		
Date Plotted.....		
Plotter.....		

Sample No.	Quartz P or A	Gossan or Min	Soil		Silt		Stream Width	Remarks	Analytical Results		
			Sand	Silt	Clay	Organic			Cu	Pb	Zn
<i>15-450</i>				<i>Mossy silt</i>			<i>3 ft</i>	<i>Swamp</i>			
<i>456</i>			<i>Soil Sample</i>				<i>2 ft</i>	<i>Swamp</i>			
<i>457</i>				<i>silt</i>			<i>3 ft</i>				
<i>458</i>				<i>silt</i>			<i>8 ft</i>				
<i>459</i>			<i>sand</i>				<i>4 ft</i>				
<i>460</i>			<i>"</i>				<i>13 ft</i>				
<i>461</i>			<i>sand</i>				<i>12 ft</i>				
<i>462</i>			<i>"</i>				<i>12 ft</i>				
<i>463</i>			<i>"</i>				<i>10 ft</i>				
<i>464</i>			<i>"</i>				<i>10 ft</i>				
<i>465</i>			<i>"</i>				<i>12 ft</i>				
<i>466</i>			<i>"</i>				<i>14 ft</i>				
<i>467</i>			<i>sand</i>				<i>12 ft</i>				
<i>468</i>				<i>silt</i>			<i>11 ft</i>				
<i>469</i>			<i>sand</i>				<i>14 ft</i>				
<i>470</i>			<i>"</i>				<i>16 ft</i>				





ATLAS EXPLORATIONS LIMITED

GEOCHEMICAL STREAM SEDIMENT SURVEY DATA

SAMPLER *Alfred Charlie*PHOTO NUMBER *W5-J-13*DATE *Sept 19/68*

Office Use Only

Map.....

Date Plotted.....

Plotter.....

Sample No.	Quartz P or A	Gossan or Min	Soil		Silt		Stream Width	Remarks	Analytical Results		
			Sand	Silt	Clay	Organic			Cu	Pb	Zn
<i>68-420</i>		<i>gravel</i>					<i>3 ft</i>				
<i>AC-68 421</i>			<i>sand</i>				<i>4 ft</i>				
<i>AC-68 422</i>			<i>sand</i>				<i>4 ft</i>				
<i>AC-68 423</i>			<i>sand</i>				<i>6 ft</i>				
<i>AC-68 424</i>				<i>silt</i>			<i>6 ft</i>				
<i>AC-68 425</i>			<i>sand</i>				<i>7 ft</i>				
<i>AC-68 426</i>			<i>sand</i>				<i>4 ft</i>				
<i>AC-68 427</i>			<i>"</i>				<i>5 ft</i>				
<i>68 428</i>			<i>=</i>	<i>silt</i>			<i>6 ft</i>				
<i>AC-68 429</i>				<i>silt</i>			<i>6 ft</i>				
<i>AC-68 430</i>				<i>Mossy silt</i>			<i>5 ft</i>				
<i>AC-68 431</i>				<i>Mossy silt</i>			<i>2 ft</i>	<i>run</i>			
<i>AC-68 432</i>				<i>Mossy silt</i>			<i>1 1/2 ft</i>	<i>run</i>			
<i>AC-68 433</i>				<i>silt</i>			<i>6 ft</i>				
<i>AC-68 434</i>				<i>Mossy silt</i>			<i>7 ft</i>				
<i>AC-68 435</i>				<i>silt</i>			<i>8 ft</i>				

105-J-13
SW

SAMPLER: A. Charlie
DATE: Sept. 18/68

MACMILLAN RIVER
AC-68-419
418
417
416
415
414
413
412
411
410
409
408
407
406
405
404
403
402
401

Plotted D.W.G.
Nov 7, 68

K19
OR
K16

ATLAS EXPLORATIONS LIMITED

GEOCHEMICAL STREAM SEDIMENT SURVEY DATA

SAMPLER..... *A. Fred. Phillips*

PHOTO NUMBER.....

DATE..... *Sept. 18/68*

<u>Office Use Only</u>		
Map.....		
Date Plotted.....		
Plotter.....		

Sample No.	Quartz P or A	Gossan or Min	soil		Silt		Stream Width	Remarks	Analytical Results		
			Sand	Silt	Clay	Organic			Cu	Pb	Zn
<i>C-68-400</i>				<i>silt</i>			<i>6 ft</i>				
<i>401</i>				<i>"</i>			<i>3 ft</i>				
<i>402</i>				<i>"</i>			<i>4 ft</i>				
<i>403</i>				<i>"</i>			<i>6 ft</i>				
<i>404</i>			<i>sand</i>				<i>6 ft</i>				
<i>405</i>			<i>sand</i>				<i>5 ft</i>				
<i>406</i>			<i>sand</i>				<i>7 ft</i>				
<i>407</i>			<i>"</i>				<i>11 ft</i>				
<i>408</i>			<i>sand</i>				<i>5 ft</i>				
<i>409</i>			<i>sand</i>				<i>3 ft</i>				
<i>410</i>			<i>sand</i>				<i>3 ft</i>				
<i>411</i>			<i>"</i>				<i>2 ft</i>				
<i>412</i>			<i>"</i>				<i>2 ft</i>				
<i>413</i>			<i>"</i>				<i>10 ft</i>				
<i>414</i>			<i>"</i>				<i>12 ft</i>				
<i>AC-68-415</i>			<i>sand</i>				<i>12 ft</i>				

SAMPLER C. OLIE
DATE: Sept. 26/68

Plotted D.W.G
Nov 7, 68



ATLAS EXPLORATIONS LIMITED

105-J-13

GEOCHEMICAL STREAM SEDIMENT SURVEY DATA

SAMPLER..... *Lucas O'Neil*

PHOTO NUMBER.....

DATE..... *Sept. 26, 1968.*

Office Use Only

Map.....

Date Plotted.....

Plotter.....

Sample No.	Quartz P or A	Gossan or Min	soil		Silt		Stream Width	Remarks	Analytical Results		
			Sand	Silt	Clay	Organic			Cu	Pb	Zn
<i>20</i>				<i>✓</i>			<i>20 feet</i>				
<i>13</i>				<i>✓</i>			<i>21 feet</i>				
<i>14</i>				<i>✓</i>			<i>15</i>				
<i>15</i>				<i>✓</i>			<i>14</i>				
<i>16</i>			<i>✓</i>				<i>14</i>				
<i>17</i>				<i>✓</i>			<i>12</i>				
<i>18</i>				<i>✓</i>			<i>11</i>				
<i>19</i>				<i>✓</i>			<i>12</i>				
<i>20</i>			<i>✓</i>				<i>9</i>				
<i>21</i>			<i>✓</i>				<i>11</i>				
<i>22</i>			<i>✓</i>				<i>9</i>				
<i>23</i>				<i>✓</i>			<i>10</i>				
<i>24</i>			<i>✓</i>				<i>12</i>				
<i>25</i>				<i>✓</i>			<i>12</i>				
<i>26</i>			<i>✓</i>				<i>15</i>				
<i>27</i>				<i>✓</i>			<i>9</i>				

105-J-13

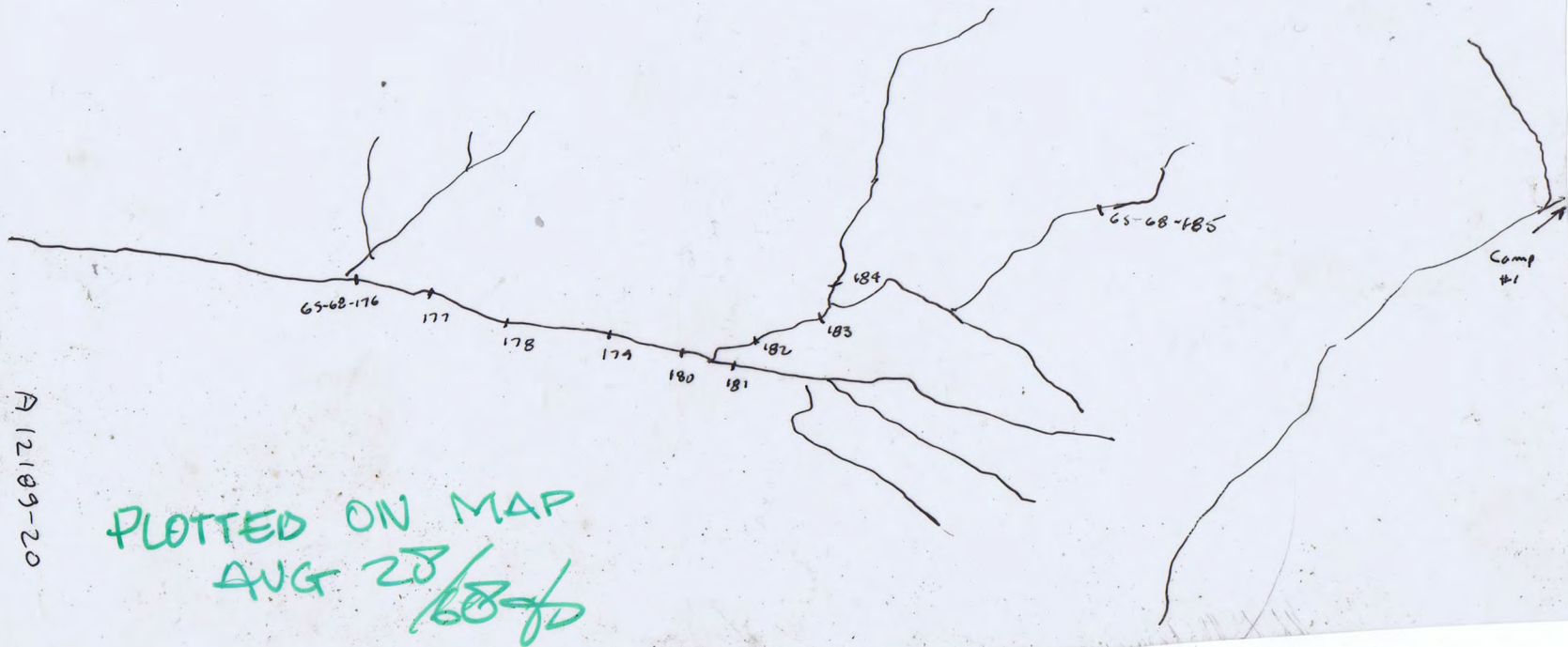
Geochemistry Salts.

G. Sanford

14 Aug 68

GS-68-176

-185



A 12109-20

PLOTTED ON MAP
AUG 28/68
js

G. Sanford.

14 Aug 68

Silt Samples

GS-68-176
-185

Photo # A-12189-20

Sample #	Qtz	Gossan or Min	Gvl	Sand	Silt	Org	Stream width
GS-68-176	Por A				✓	✓	4'
All silts							
GS-68-177	P						4'
Flows over blk arg. llite, dark lst & some feldspathic gtzite or sandstone							
GS-68-178	P				✓	✓	4'
GS-68-179	P				✓	✓	4'
Blk cherts & arg. llite BR in ckr							
GS-68-180	P				✓	✓	4'
GS-68-181	P				✓	✓	2'
South fork							
GS-68-182	P				✓	✓	2'
North fork							
GS-68-183	P				✓	✓	2'
Dark lst BR in ckr							
GS-68-184	P				✓	✓	1'
Prob flows over mostly blk cherts							
GS-68-185	P				✓	✓	1'
flows over mostly blk cherts							

MACK LADUE

AIR 371-24H

Δ CAMP

MI-708

MI-707

MI-706

705

704

ES-C-14

702

MI-701

MI-700

MI-699

PP-416

PP-417

PP-418

PP-419

TP-16

105-1-13

GEOCHEM PLOTTED

SEPT. 19/68

Ⓢ

MACK LADUE

AIR 371-24H

Δ CAMP

MI-708

MI-707

MI-706

705

704

ES-C-14

702

MI-701

MI-700

MI-699

PP-416

PP-417

PP-418

PP-419

TP-16

105-1-13

GEOCHEM PLOTTED

SEPT. 19/68

Ⓢ

ATLAS EXPLORATIONS LIMITED

GEOCHEMICAL STREAM SEDIMENT SURVEY DATA

SAMPLER. M.A.C.H. LAQUE.....

PHOTO NUMBER. A.12178-312

DATE. 23 AUG 1968.....

Office Use Only

Map.....

Date Plotted.....

Plotter.....

Sample No.	Quartz P or A	Gossan or Min	Soil		Silt		Stream Width	Remarks	Analytical Results		
			Sand	Silt	Clay	Organic			Cu	Pb	Zn
1469-669			✓				2				
670			✓				3				
671				✓			3				
672			✓				4				
673			✓				6				
674			✓				4				
675				✓			4				
676			✓				4				
677			✓				4				
678			✓				3				
679			✓				4				
680			✓				3				
681			✓				3				
682			RUST Soil								
683			✓				2				
684			✓				1				

Lat. and Long. of Puritite showing. B. Waugh

Located at top end of creek 400' above
geochron sample BW 68-377.

There are 4 specific locations spaced about
70' apart in rectangular shape.

- ① This sample contained small crystals
of galena and chalcocite was predominantly
puritite, to be assayed for silver, copper, lead,
~~and~~ nickel, zinc.
- ② ~~Contains~~ Basically magnetite small
~~of~~ crystals of calcopyrite are evident
assayed for silver, nickel, copper, lead, zinc
- ③ Basically puritite, small crystals of
calcopyrite and sphalerite are also
present assayed for silver, lead, zinc,
copper, nickel.
- ④ Basically puritite no other definite
mineralization identified.

62° 49' 30"
131° 42' 00"

Granite plug and gossan are in
immediate area of showing, (North 1000')
Gossan on NW bank of creek.