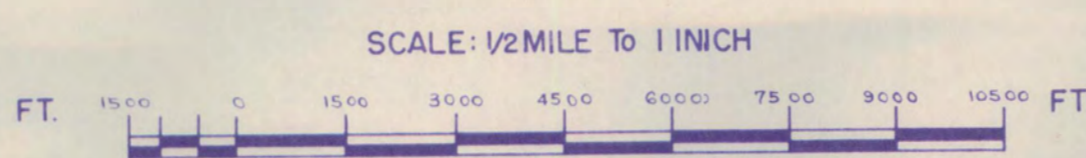


SHEET 105 J-14

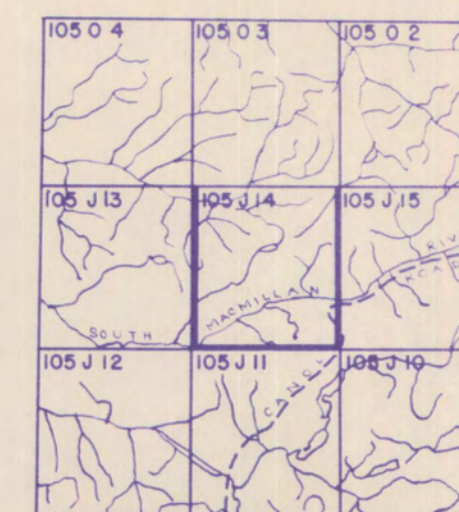
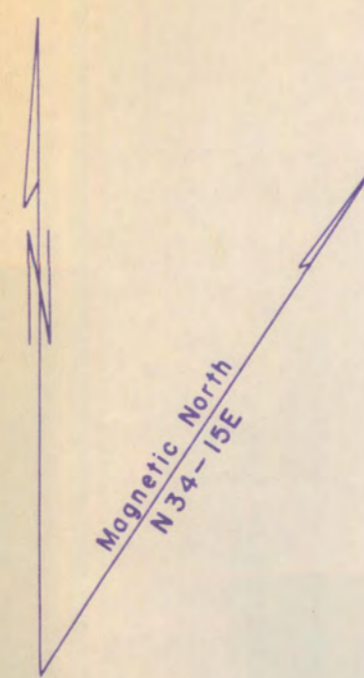
LATITUDE 62° 45' To 63° 00'
LONGITUDE 131° 00' To 131° 30'

Geology
Geoburn

CANADA
DEPARTMENT OF NORTHERN AFFAIRS AND NATIONAL RESOURCES
NORTHERN ADMINISTRATION AND LANDS BRANCH
LANDS DIVISION



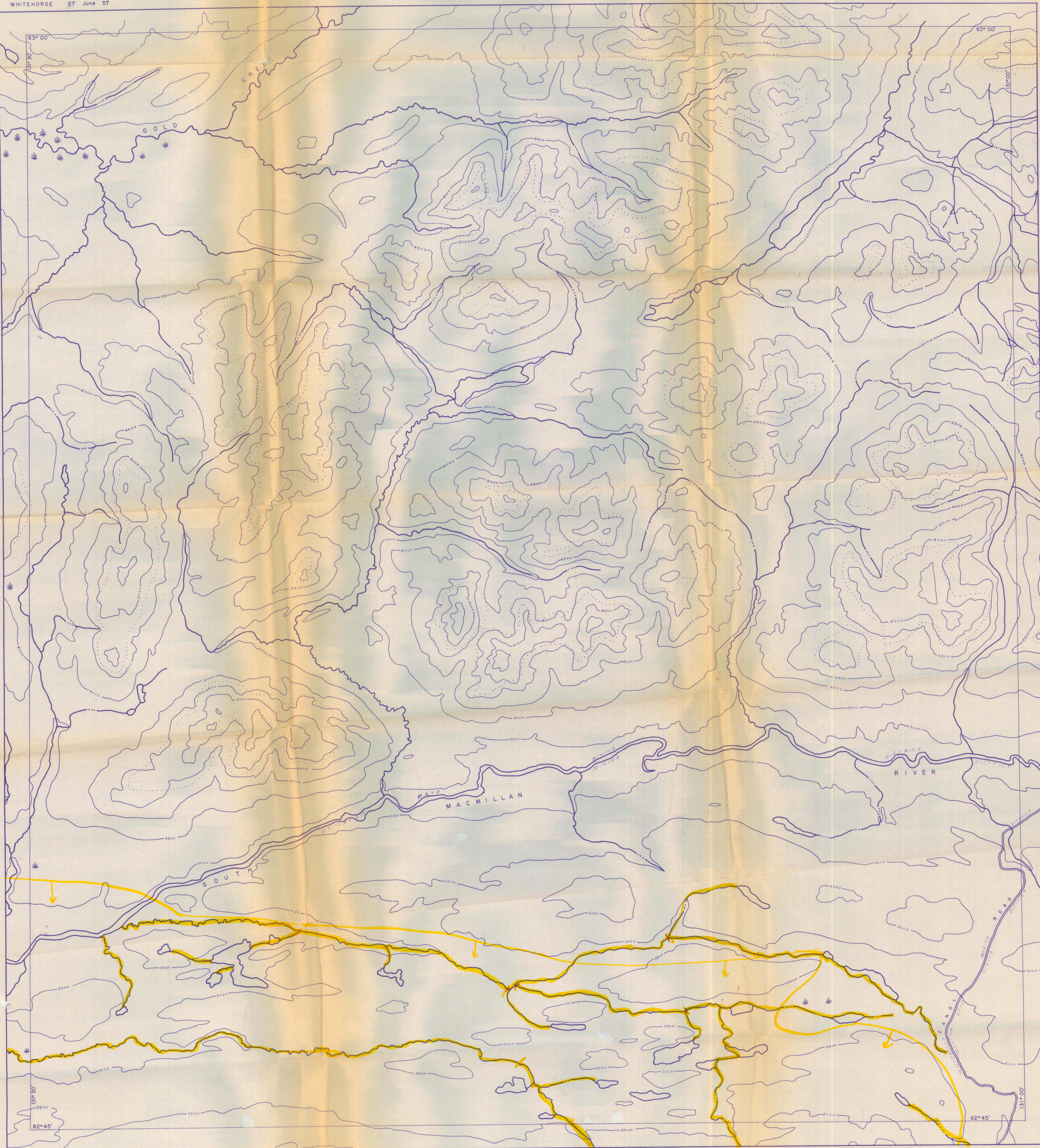
ISSUED UNDER THE AUTHORITY OF THE MINISTER
OF
NORTHERN AFFAIRS AND NATIONAL RESOURCES



NOTICE

THIS MAP IS ISSUED AS A PRELIMINARY GUIDE FOR WHICH THE DEPARTMENT OF NORTHERN AFFAIRS AND NATIONAL RESOURCES WILL ACCEPT NO RESPONSIBILITY FOR ANY ERRORS, INACCURACIES OR OMISSIONS WHATSOEVER ON THE SURFACE BEFORE ADEQUATE SURVEYS HAVE BEEN MADE.

WHITEHORSE 27 June 57



AREA A

105 J 14

