

A REPORT ON THE
TARA AND DEB CLAIM GROUPS
FULLER LAKE AREA, YUKON

By T. L. Sadlier-Brown

C O N T E N T S

	<u>Page</u>
INTRODUCTION	1
GENERAL GEOLOGY	1
THE TARA GROUP	1
Description	1
Conclusions and Recommendations	2
THE DEB CLAIMS	3
Description	3
Conclusions and Recommendations	3

Diagrams:

- 1 Tara 1 to 8. Location and Geological Boundaries
- 2 Fuller Lake Deposit (Tara Group) - in back pocket
- 3 Deb 1 to 32. Location Map
- 4 Copper Geochemistry, Deb Group
- 5 Lead Geochemistry, Deb Group
- 6 Zinc Geochemistry, Deb Group

A REPORT ON THE TARA AND DEB CLAIM GROUPS
FULLER LAKE AREA, YUKON

By T. L. Sadlier-Brown

INTRODUCTION

The Deb and the Tara Claim Groups are situated near Fuller Lake in the extreme northeast corner of the Sheldon Lake Map Area (105-J-16), Yukon Territory. Both properties are accessible from Fuller Lake, which is a large clear lake about 4 miles long and 7 miles east of the Canol Road, about 90 miles northeast of the settlement of Ross River.

The claims were staked during the summer of 1966 for Yukon Copper Limited, and were visited during September of the same year by T. L. Sadlier-Brown in company with Mr. John O'Neil of Yukon Copper and C. Dary of Ross River.

GENERAL GEOLOGY

Both properties lie within an extensive area of Ordovician and Silurian sedimentary rocks which comprises much of the northeastern half of G.S.C. Map 12 - 1961, the Sheldon Lake Sheet. These rocks, referred to as Unit 3 in the Descriptive Notes (1), are predominantly cherts and shales, although quartzites, conglomerates, limestones, sandstones and phyllites are also present.

THE TARA GROUP

Description

About three miles southeast of Fuller Lake, and on the southwest side of a valley passing through the Itsi Range, are 8 claims comprising the Tara Group.

The claims were staked to cover a sulphide zone which outcrops along the bed of a creek flowing north off the Itsi Range. Several large sulphide bearing boulders were observed in the creek bed near the base of the steep part of the mountain slope. Samples of this material, which contained chalcopyrite, sphalerite and galena, were assayed with the following results:

- (1) Roddich, J. A., Green, L. H.
Sheldon Lake; G.S.C. Map 12-1961

	Cu(%)	Zn(%)	Pb(%)	Ag(oz/ton)
Y 78	0.21	2.9	2.5	3.54
Y 80	0.01	1.0	1.9	3.00
Y 81	0.28	0.1	1.1	1.98

The stream valley follows a north-south striking shear zone which has been mineralized over widths of up to 10 feet with chalcopyrite, galena, sphalerite, pyrrhotite and pyrite. The zone cuts well bedded and steeply dipping cherts, shales, and hornfelsic rocks at a high angle, and can be traced for about 800 feet upstream from the lowest known showing. It is open at its north end, but appears to narrow southward with increased elevation.

The relationship between the zone and the intrusive rocks near it is not known, but its location on G.S.C. Map 12 - 1961 would be in an area of hornfelsic rocks between the main granodiorite body of the Itsi Range and a small stock a couple of thousand feet east of it.

The boundaries between the mineralized zone and the country rock are vague, usually marked only by a change in colour from grey in the wall rock to dark green and black in the sheared zone. The change takes place over a few inches, but is not accompanied by any textural difference except in the centre of the zone, where mineralization tends to occur. The sulphides are present in one or more bands of varying width paralleling the trend of the vein. In places they are massive over small areas, but usually they are densely to sparsely disseminated. A grab sample (# Y 77) from a high grade area about 250 feet downstream from the lowest waterfall gave the following assay: Cu 0.39%, Pb 15.1%, Zn 13.4%, Ag 10.96 oz/ton. A chip sample (# 79) was taken across a width of 6 feet in the same area. It gave the following assay: Cu .03%, Pb 2.9%, Zn 3.2%, Ag 2.48 oz/ton.

Diagram #1 was made after an examination of the showings in 1954. Assay results from this work, coupled with those from sample #79 of the present examination, give the following average grades: Pb 2.76%, Zn 2.4%, Ag 3.2 oz/ton. Average silver-lead ratio is 1.3. Average copper grade is around .3%, but this is not a weighted statistical value.

Conclusions and Recommendations

The mineralized shear zone southeast of Fuller Lake is in itself of limited interest. Although lead and zinc values are encouraging and the possibility of a northerly extension exists, the likelihood of exploitable tonnages being associated with the known showing is small.

The proximity of the zone to the intrusive rocks to the south and west, however, suggests a relationship between the two, and further work in the area seems justified to follow this up.

Although the extent of previous conventional prospecting in the area is not known, it is recommended that serious consideration be given to initiating a program of this type, accompanied by a reconnaissance geochemical survey.

THE DEB CLAIMS

Description

Immediately north of Fuller Lake is a group of 32 contiguous claims known as the Deb Group. It straddles a ridge with a maximum relief of about 700 feet above Fuller Lake, and covers a large area of rust near its northern end. Country rock over most of the ridge is the quartzite of unit 3 (G.S.C. Map) although a band of reddish brown sandstone is present in outcrop on the north slope on Deb #11. The grey quartzite is present not far away both north and south of this.

In the northeastern part of the group is an extensive limonite gossan which supports only sparse vegetation. Several hundred feet of trenches have been blasted into this material, which is fairly soft and earthy, but so far as is known, no sulphides were found. None were seen during the present examination either. Near its southern and uphill limit a few outcrops of quartzite protrude through the gossan, but nowhere is there any evidence of a source for it.

A geochemical survey was done along the hillside near the lower part of the rust area. This traverse has been combined with two traverses done along claim lines by the owners of the property, and is approximately located in Figures 4, 5 and 6.

Copper and lead geochemical values are generally weak throughout the area. A few zinc values which are slightly above background occur in the extreme northeast part of the claim group, but their spotty distribution is not encouraging.

Conclusions and Recommendations

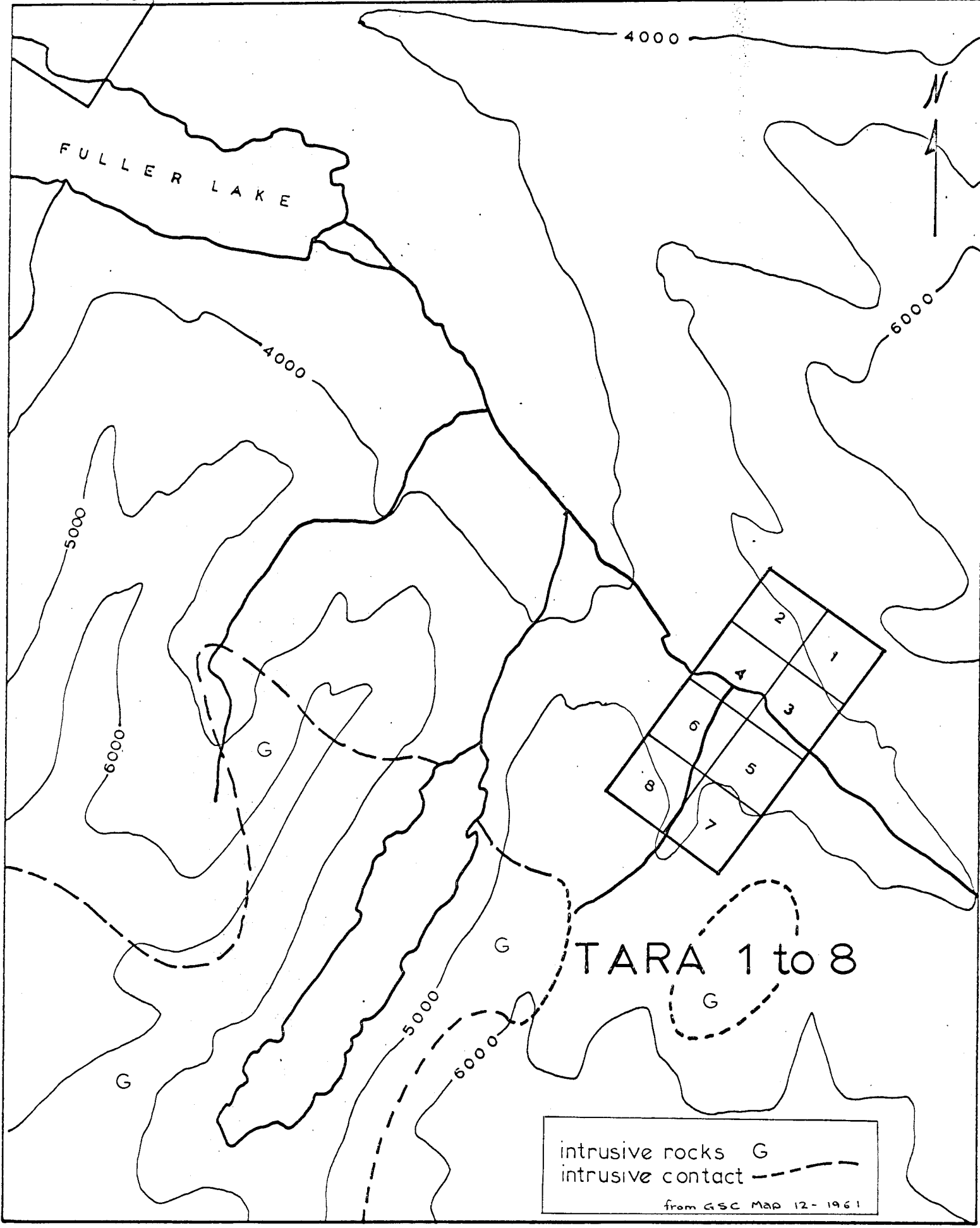
No sulphide mineralization was seen during the present examination. Geochemical values, particularly those on the gossan

area itself, do not indicate the presence, in the area tested, of any interesting amounts of copper, lead or zinc. Consequently, no further work is recommended.



T. L. Sadlier-Brown,
Geologist,
Atlas Explorations Limited.

January 25, 1967

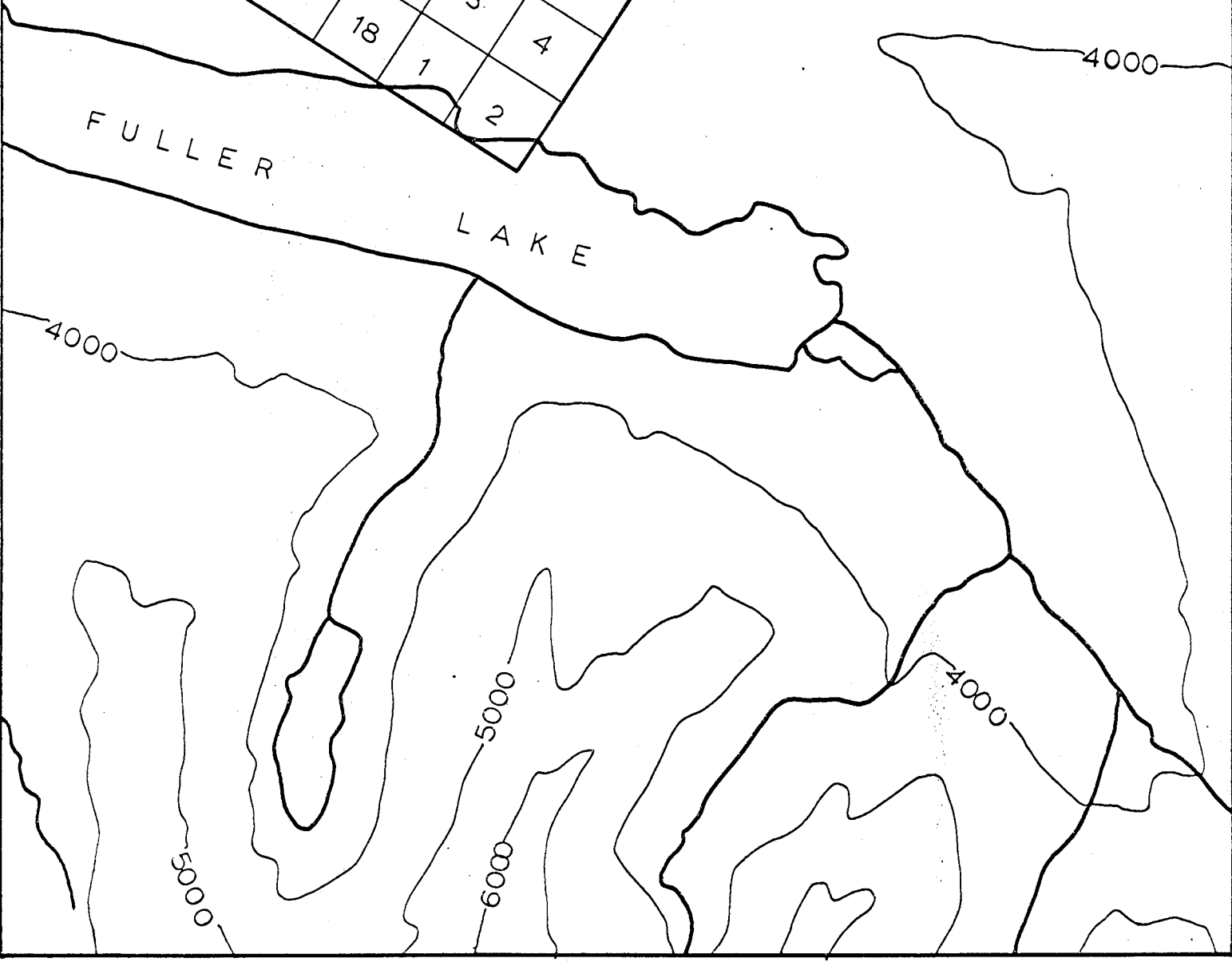


intrusive rocks G
 intrusive contact - - - - -
 from GSC Map 12-1961

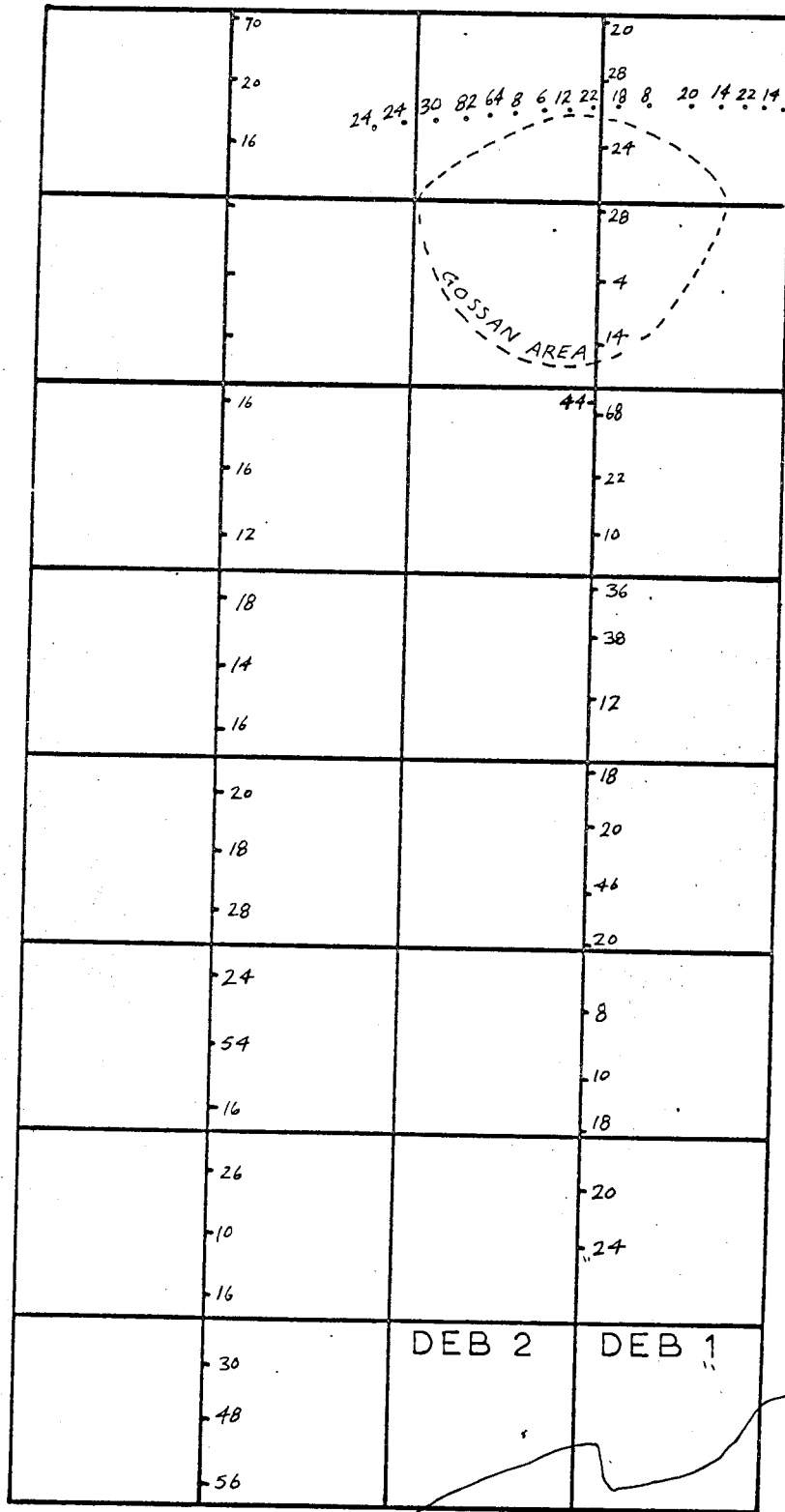
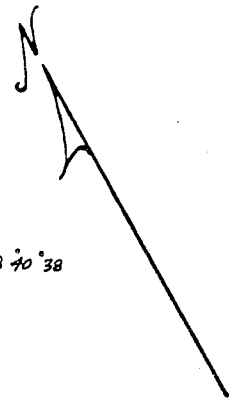
DEB 1 to 32



31	32	15	16
29	30	13	14
27	28	11	12
25	26	9	10
23	24	7	8
21	22	5	6
19	20	3	4
17	18	1	2

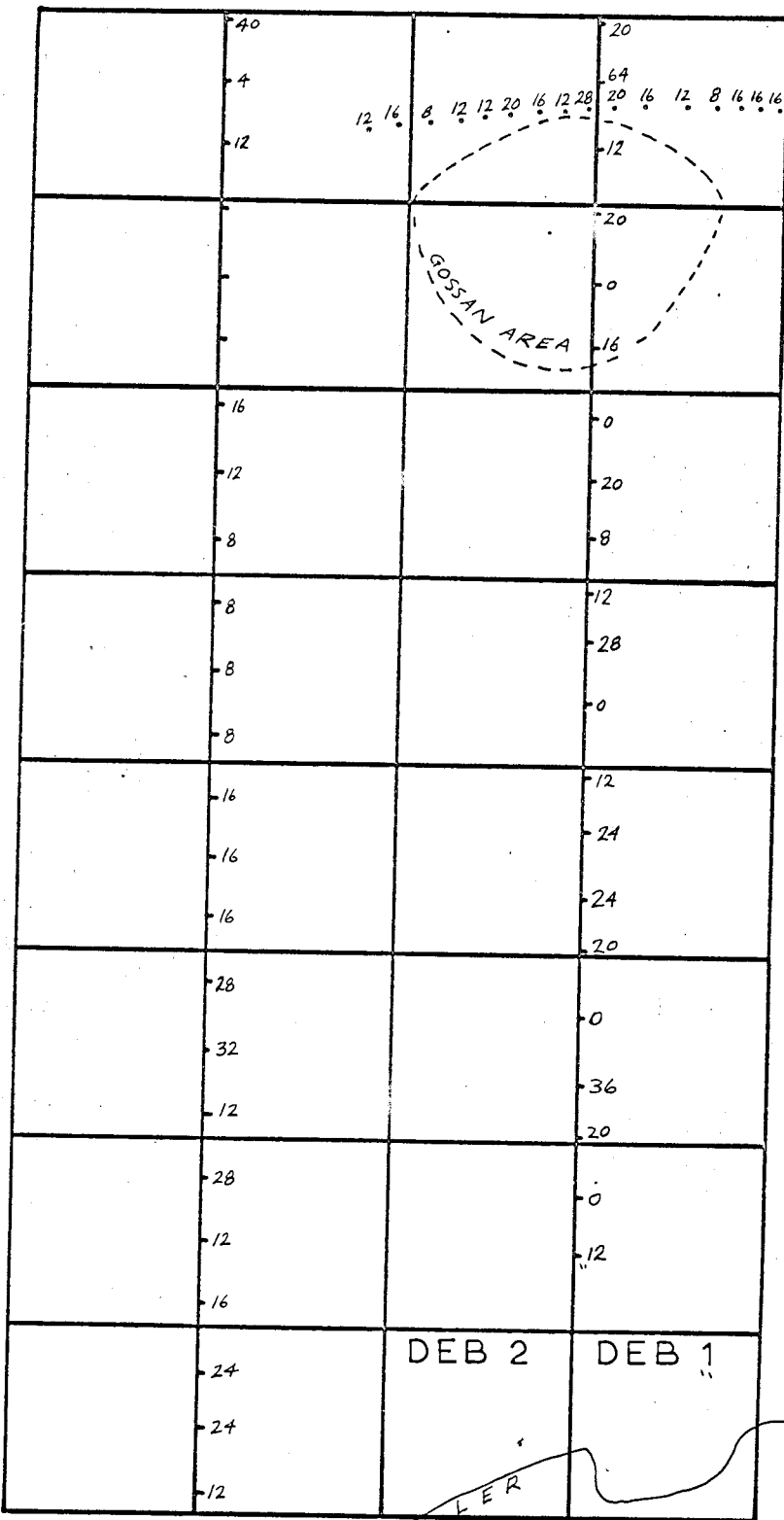
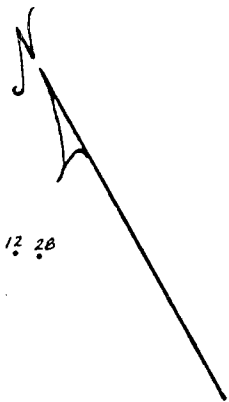


COPPER
GEOCHEMICAL PLAN deb group

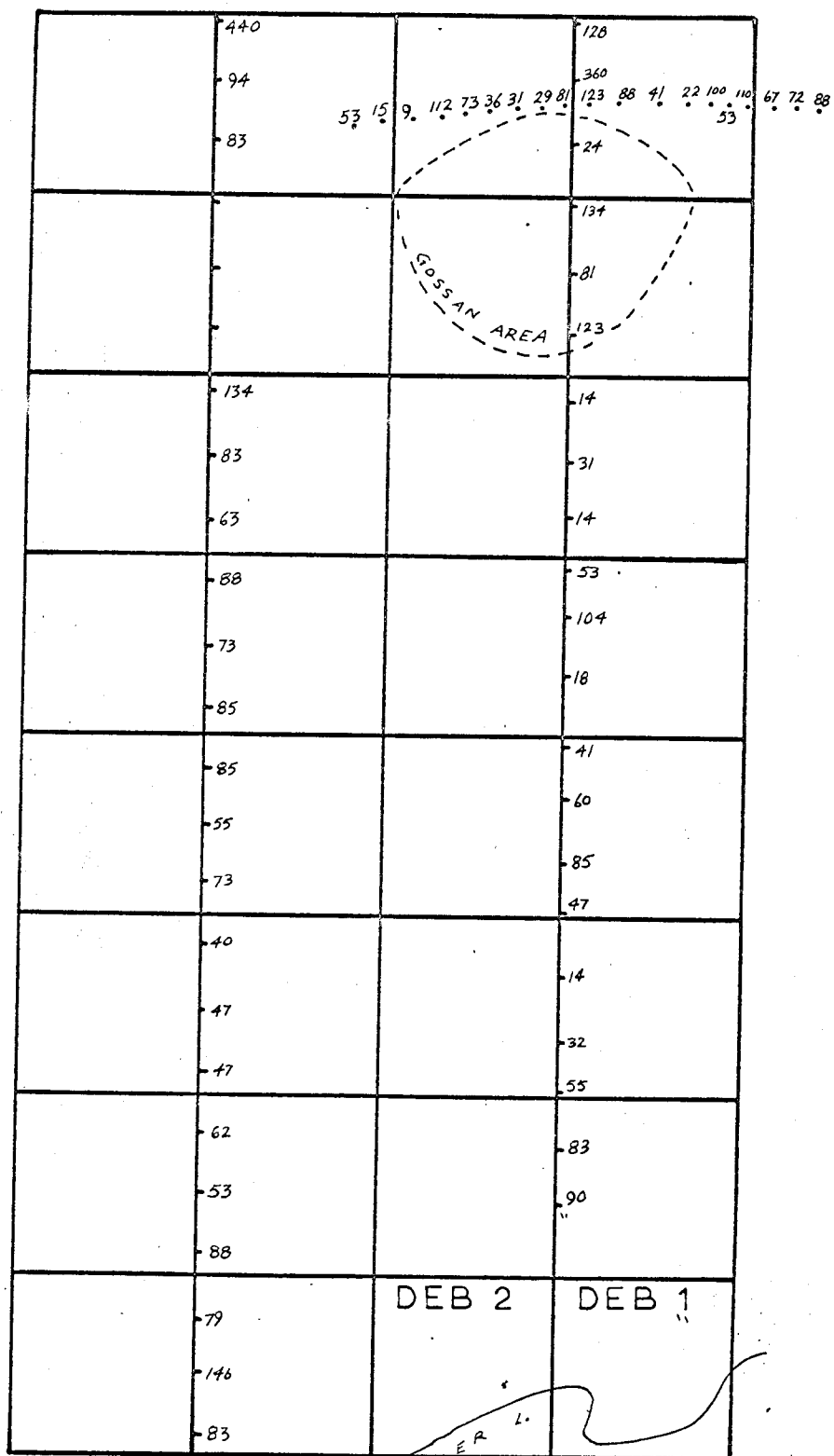
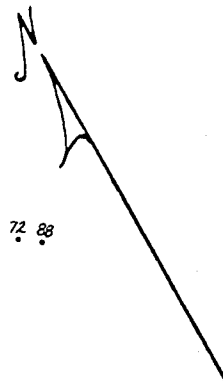


FULLER LAKE

LEAD
GEOCHEMICAL PLAN deb group



ZINC
GEOCHEMICAL PLAN deb group



FULLER L.

ATLAS EXPLORATIONS LIMITED

ANALYTICAL WORK SHEET

GEOCHEMICAL

Report Number R120 Weight of Sample

From TSB - MACMILLAN SAMPLES. Extraction

Tested For Cu Pb Zn Volume Used

Date 8 OCT 66 Analyst

SAMPLE NUMBER		Cu	PPM	Pb	PPM	Zn	PPM	PPM	PPM	PPM
OURS	YOURS									
1	M 1		32		36		118			
2	2		16		20		110			
3	3		20		12		104			
4	4		48		16		110			
5	5		6		ND		22			
6	6		24		12		53			
7	7		24		16		15			
8	8		30		8		9			
9	9		82		12		112			Small Creek Till
10	10		64		12		73			
11	11		8		20		36			
12	12		6		16		31			Old Creek Bed
13	13		12		12		29			Bottom Edge of Clearing
14	14		22		28		81			Just Below Clearing
15	15		18		20		123			
16	16		8		16		88			
17	18 X		20		12		41			
18	19		14		8		22			
19	20		22		16		100			
20	21		14		16		53			
21	22		64		16		110			
22	23		38		8		67			
23	24		40		12		72			
24	25		34		28		88			
25	27		44		48		72			
26	28		20		16		41			Soil from Blast hole
27	29		122		24		35			
28	29		26		20		53			

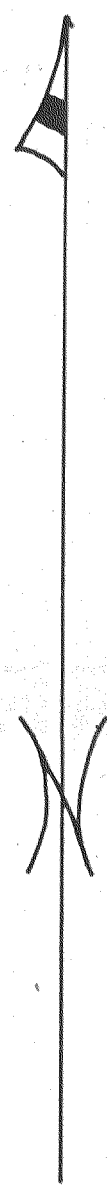
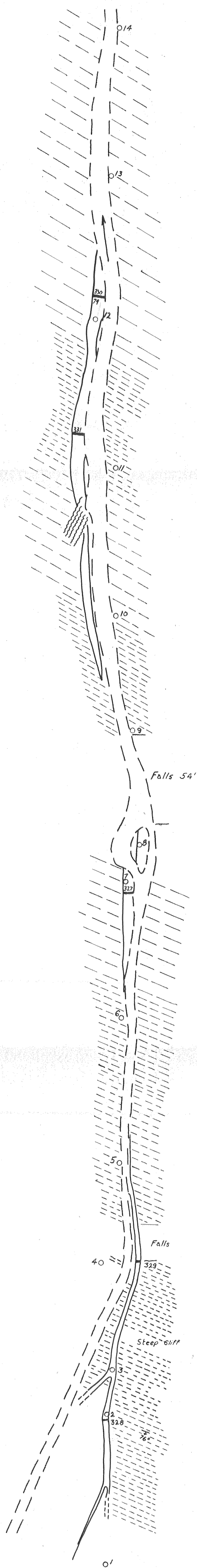
Mine Fuller
Date Oct 6
Hole No. _____
Sample N^o Y 77
From _____ To _____
Sample Length _____
Remarks F1 HF from
blowing, crushed 25'
drum from fullers
15.1 10.96 13.4 .39
Assay for Pb Ag Zn Cu
Signed FJS13

Mine Fuller
Date Oct 6
Hole No. _____
Sample N^o Y 78
From _____ To _____
Sample Length _____
Remarks F 2
2.5 3.54 2.9 .21
Assay for Pb Ag Zn Cu
Signed FJS13

Mine Fuller
Date Oct 6
Hole No. _____
Sample N^o Y 79
From _____ To _____
Sample Length 6'
Remarks Chip Sample
2.9 2.48 3.2 F3 .03
Assay for Pb Ag Zn Cu
Signed FJS13

Mine Fuller
Date Oct 6
Hole No. _____
Sample N^o Y 80
From _____ To _____
Sample Length _____
Remarks F4
Cu float
(Chalco)
.01 3.00 1.9 1.0
Assay for Cu Ag Pb Zn
Signed FJS13

Mine Fuller
Date Oct 6
Hole No. _____
Sample N^o Y 81
From _____ To _____
Sample Length _____
Remarks F5
Diss Chalco + galen
+ sphalerite, very
material in float. 1.98
Assay for Cu Pb Zn Ag
Signed FJS13



FULLER LAKE DEPOSIT
TAPE & COMPASS SURVEY
DMC AUG. 1954

- VEIN
- THICK BEDDED SEDIMENTS
- THIN BEDDED SEDIMENTS
- SAMPLE LOCATION
- CHAINAGE POINT
- CREEK

215' Difference in elevation between
sample 328 & 330

No.	Width	Au/oz	Ag/oz	Cu%	Pb%	Zn%
327	7.5'	Tr.	5.20	0.80	1.75	1.70
328	4'	-	3.90	-	5.10	3.20
329	2'	-	7.20	-	5.55	2.30
330	9'	-	3.60	-	4.30	3.25
331	10'	-	0.85	-	0.55	1.50

79	6'	-	2.48	0.03	2.90	3.20
----	----	---	------	------	------	------

Scale: 1"=40'

DRAWN BY: *Al Giddens*