

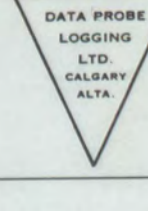
Carmack South Wireline Logs

<u>Hole</u>	<u>Drilled Depth</u>	<u>Logged Depth</u>	<u>Water table</u>	<u>Driller's</u>	<u>Logged</u>
				<u>Coal intersection</u>	
C-76-7	817	800	448		No Coal
C-76-10	967	960	520		No Coal
C-76-12	524	380	289		232.5-233.6
				239.0-250.0	234.7-248.6
C-76-16	212	206	196	155-156.5	153.5-155.7
				158-176	158.0-176.8



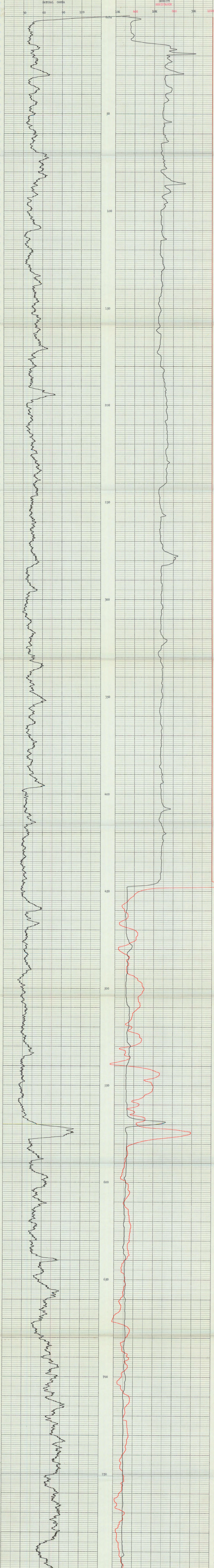
DATA PROBE LOGGING LTD.

3133 DOVERVILLE CRESCENT S.E., CALGARY, ALBERTA T2B 1V1

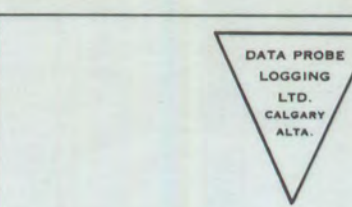


COMPANY CYPRUS ANVIL MINING CORP.
 HOLE NUMBER OR NAME G - 26 - 7
 LOCATION Carmaux South
 PROVINCE Yukon ELEVATION _____
 LOG TYPE Natural Gamma, Resistivity & Density

DATE	July 12, 1977	TOOL MFG. & S/N	Well Reoon	SOURCE TYPE	Ra 226
LOGGING UNIT NO.	6	TOOL DIAMETER	1 1/2"	SOURCE STRENGTH	3 mCi's
RUN NO.	1 & 2	DETECTOR TYPE	Scint	SOURCE SPACING	12"
DRILLED DEPTH	817'	DETECTOR SIZE	3/4" x 3"	RESISTIVITY TYPE	Single Point
LOGGED DEPTH	800'	TIME CONSTANT, SECONDS	3 & 1	SCALE, OHMS/IN.	200
ZERO DATUM	Top of Casing	RECORDER SCALE, C.P.S./IN.	30 & 5000	S.P. SCALE, MVIN	
HOLE DIAMETER	4 1/2"	RECORDER ZERO	As Marked	RECORDED BY	R.A. Hodge
FLUID LEVEL		LOGGING SPEED, FT/MIN.	20	WITNESSED BY	
CASING LENGTH	15'	RECORDER DEPTH SCALE, FT/IN.	10		

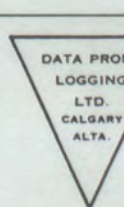


WIDCO DIVISION OF GEARHART OWEN INDUSTRIES, FORT WORTH, TEXAS CHART NO. 102 MADE IN U.S.A.



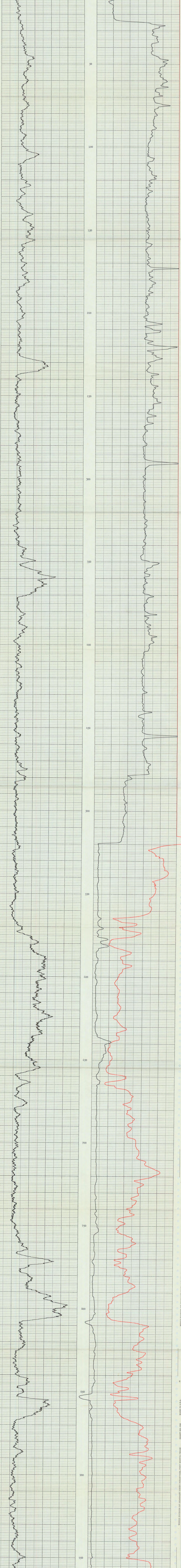
DATA PROBE LOGGING LTD.

3133 DOVERVILLE CRESCENT S.E., CALGARY, ALBERTA T2B 1V1



COMPANY CYPRUS ANVIL MINING CORP.
 HOLE NUMBER OR NAME C - 76 - 10
 LOCATION Carmichael South
 PROVINCE Yukon ELEVATION _____
 LOG TYPE Natural Gamma, Resistivity & Density

DATE	July 12, 1977	TOOL MFG. & S/N	Well Recon	SOURCE TYPE	Rn 226
LOGGING UNIT NO.	6	TOOL DIAMETER	1 1/4"	SOURCE STRENGTH	3 mci's
RUN NO.	1 & 2	DETECTOR TYPE	Scint	SOURCE SPACING	12"
DRILLED DEPTH	967'	DETECTOR SIZE	3/4" x 3"	RESISTIVITY TYPE	Single Point
LOGGED DEPTH	960'	TIME CONSTANT, SECONDS	3 & 1	SCALE, OHMS-IN	200
ZERO DATUM	C.L.	RECORDER SCALE, C.P.S./IN	30 & 1	S.P. SCALE, M.VIN	
FLUID LEVEL	220'	RECORDER ZERO	An Max/cond		
HOLE DIAMETER		LOGGING SPEED, FT/MIN	20	RECORDED BY	R.A. Hodge
CASING LENGTH	25'	RECORDER DEPTH SCALE, FT/IN	10	WITNESSED BY	



WIDCO DIVISION OF GEARHART OWEN INDUSTRIES, FORT WORTH, TEXAS
 CHART NO. 102
 MADE IN U.S.A.



DATA PROBE LOGGING LTD.

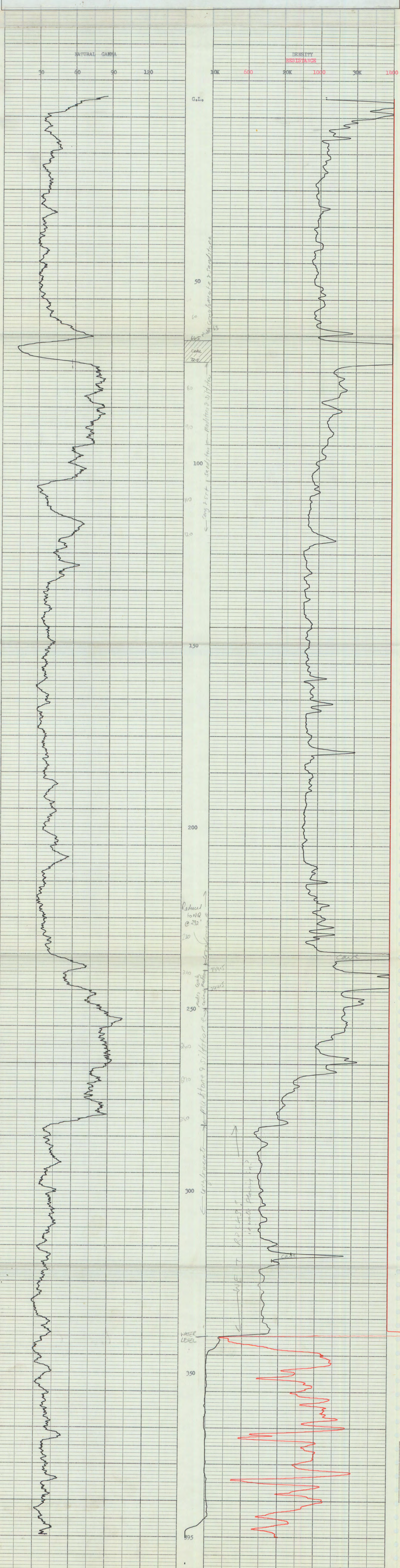
3133 DOVERVILLE CRESCENT S.E., CALGARY, ALBERTA T2B 1V1



COMPANY CYPRUS ANVIL MINING CORP.
 HOLE NUMBER OR NAME C - 76 - 11
 LOCATION Gazmacks North
 PROVINCE Yukon ELEVATION _____

LOG TYPE Natural Gamma, Resistance & Density

DATE	July 13, 1977	TOOL MFG. & S/N	Well Recon	SOURCE TYPE	Ra 226
LOGGING UNIT NO.	6	TOOL DIAMETER	1 1/4"	SOURCE STRENGTH	3 mci's
RUN NO.	1 & 2	DETECTOR TYPE	Scint	SOURCE SPACING	12"
DRILLED DEPTH	887'	DETECTOR SIZE	3/4" x 3"	RESISTIVITY TYPE	Single Point
LOGGED DEPTH	395'	TIME CONSTANT, SECONDS	3 & 1	SCALE, OHMS/IN.	200
ZERO DATUM	G.L.	RECORDER SCALE, C.F.S./IN.	30 & 5000	S.P. SCALE, MV/IN.	
FLUID LEVEL	340'	RECORDER ZERO	As Marked	RECORDED BY	R.A. Hedge
HOLE DIAMETER		LOGGING SPEED, FT/MIN.	20	WITNESSED BY	
CASING LENGTH	N11	RECORDER DEPTH SCALE, FT/IN.	10		



WIDCO DIVISION OF GEARHART OWEN INDUSTRIES, FORT WORTH, TEXAS
 CHART NO. 102
 MADE IN U.S.A.



DATA PROBE LOGGING LTD.

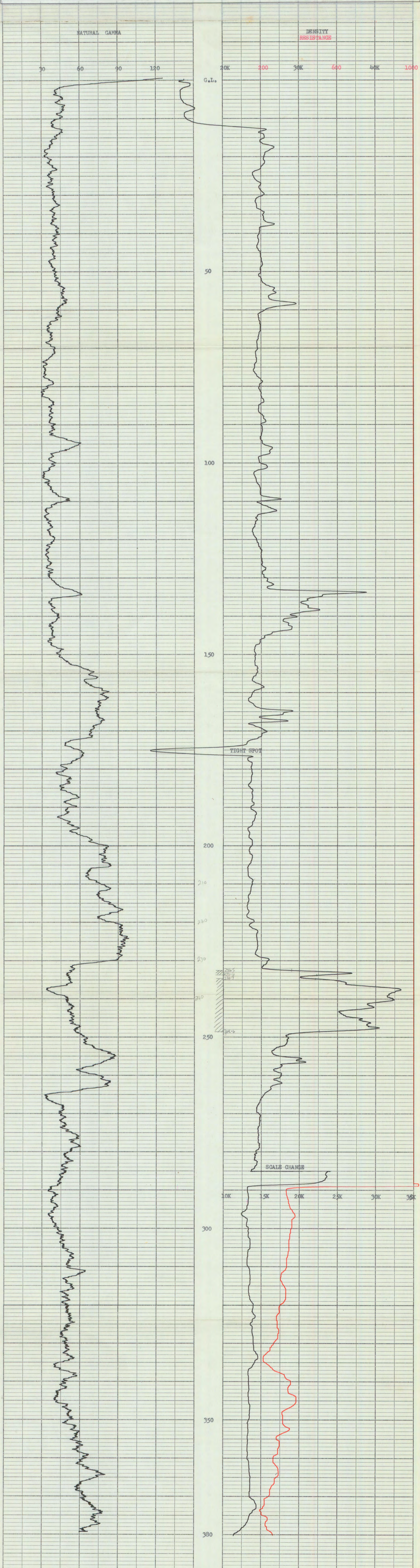
3133 DOVERVILLE CRESCENT S.E., CALGARY, ALBERTA T2B 1V1



COMPANY CYPRUS ANVIL MINING CORP.
 HOLE NUMBER OR NAME C - 76 - 12
 LOCATION Carmaaks South
 PROVINCE Yukon ELEVATION _____

LOG TYPE Natural Gamma, Resistance & Density

DATE	July 12, 1977	TOOL MFG. & S/N	Well Recon	SOURCE TYPE	Ra 226
LOGGING UNIT NO.	6	TOOL DIAMETER	1 1/4"	SOURCE STRENGTH	3 mci's
RUN NO.	1 & 2	DETECTOR TYPE	Scint	SOURCE SPACING	12"
DRILLED DEPTH	524'	DETECTOR SIZE	3/4" x 3"	RESISTIVITY TYPE	Single Point
LOGGED DEPTH	380'	TIME CONSTANT, SECONDS	3 & 1	SCALE, OHMS/IN.	
ZERO DATUM	G.L.	RECORDER SCALE, C.P.S./IN.	30 & 5000	S.P. SCALE, MV/IN.	
FLUID LEVEL	289'	RECORDER ZERO	As Marked		
HOLE DIAMETER		LOGGING SPEED, FT/MIN.	20	RECORDED BY	R.A. Hodge
CASING LENGTH	13'	RECORDER DEPTH SCALE, FT/IN.	10	WITNESSED BY	



MADE IN U.S.A. CHART NO. 102 WIDCO DIVISION OF GEARHART OWEN INDUSTRIES, FORT WORTH, TEXAS



DATA PROBE LOGGING LTD.

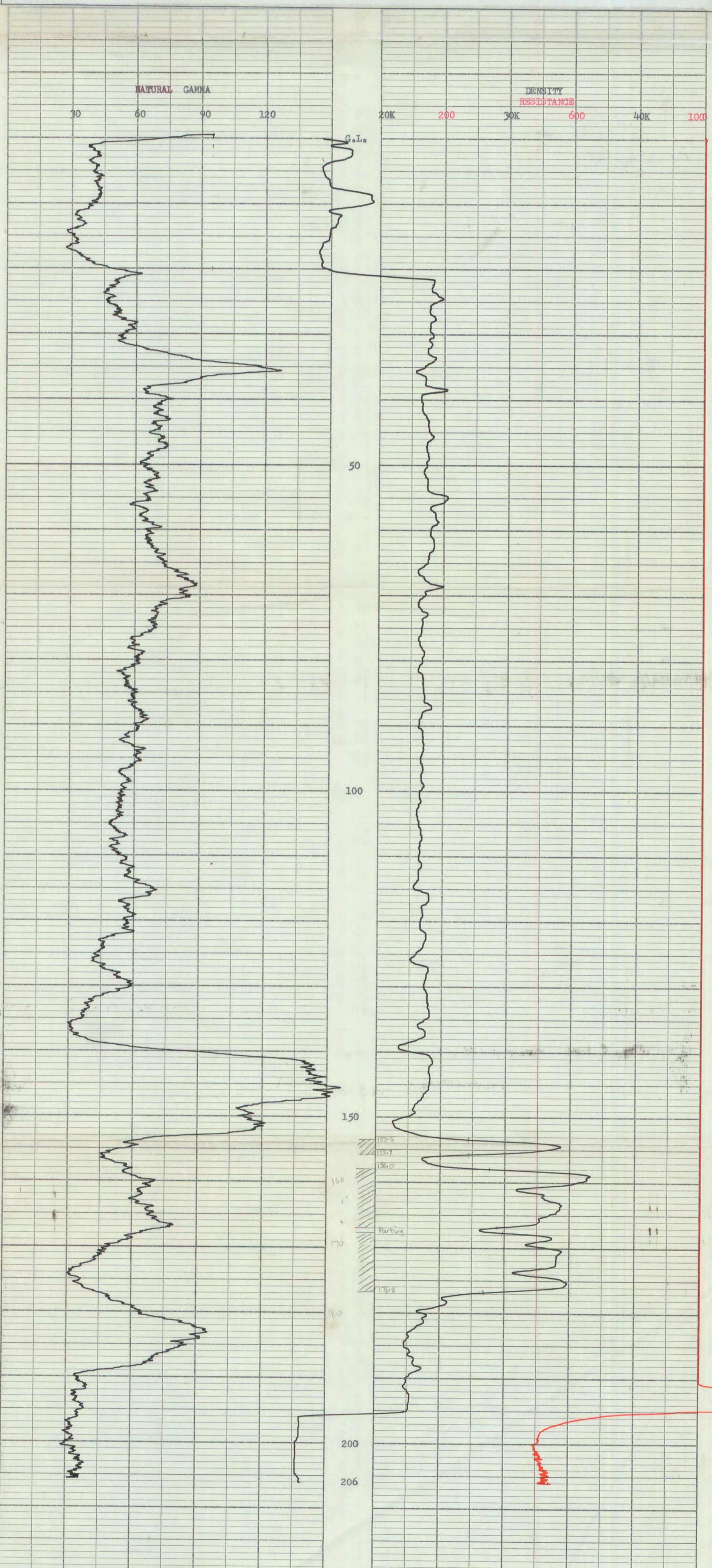


3133 DOVERVILLE CRESCENT S.E., CALGARY, ALBERTA T2B 1V1

COMPANY CYPRUS ANVIL MINING CORP.
 HOLE NUMBER OR NAME G - 76 - 16
 LOCATION Carmacks South
 PROVINCE Yukon ELEVATION _____

LOG TYPE Natural Gamma, Resistance & Density

DATE	July 12, 1977	TOOL MFG. & S/N	Well Recon	SOURCE TYPE	Ra 226
LOGGING UNIT NO.	6	TOOL DIAMETER	1 1/4"	SOURCE STRENGTH	3 mei's
RUN NO.	1 & 2	DETECTOR TYPE	Scint	SOURCE SPACING	12"
DRILLED DEPTH	212'	DETECTOR SIZE	3/4" x 3"	RESISTIVITY TYPE	Single Point
LOGGED DEPTH	206'	TIME CONSTANT, SECONDS	3 & 1	SCALE, OHMS/IN.	200
ZERO DATUM	G.L.	RECORDER SCALE, C.P.S./IN.	30 & 5000	S.P. SCALE, MV/IN.	
FLUID LEVEL	196'	RECORDER ZERO	As Marked		
HOLE DIAMETER		LOGGING SPEED, FT/MIN.	20	RECORDED BY	R.A. Hodge
CASING LENGTH	21'	RECORDER DEPTH SCALE, FT/IN.	10	WITNESSED BY	



WIDCO DIVISION OF GEARHART OWEN INDUSTRIES, FORT WORTH, TEXAS
 MADE IN U.S.A.
 CHART NO. 102