



Geological Database for North Yukon

Grant Abbott - Yukon Geology, DIAND

Anna Fonseca - Yukon Geology, YTG

Canada

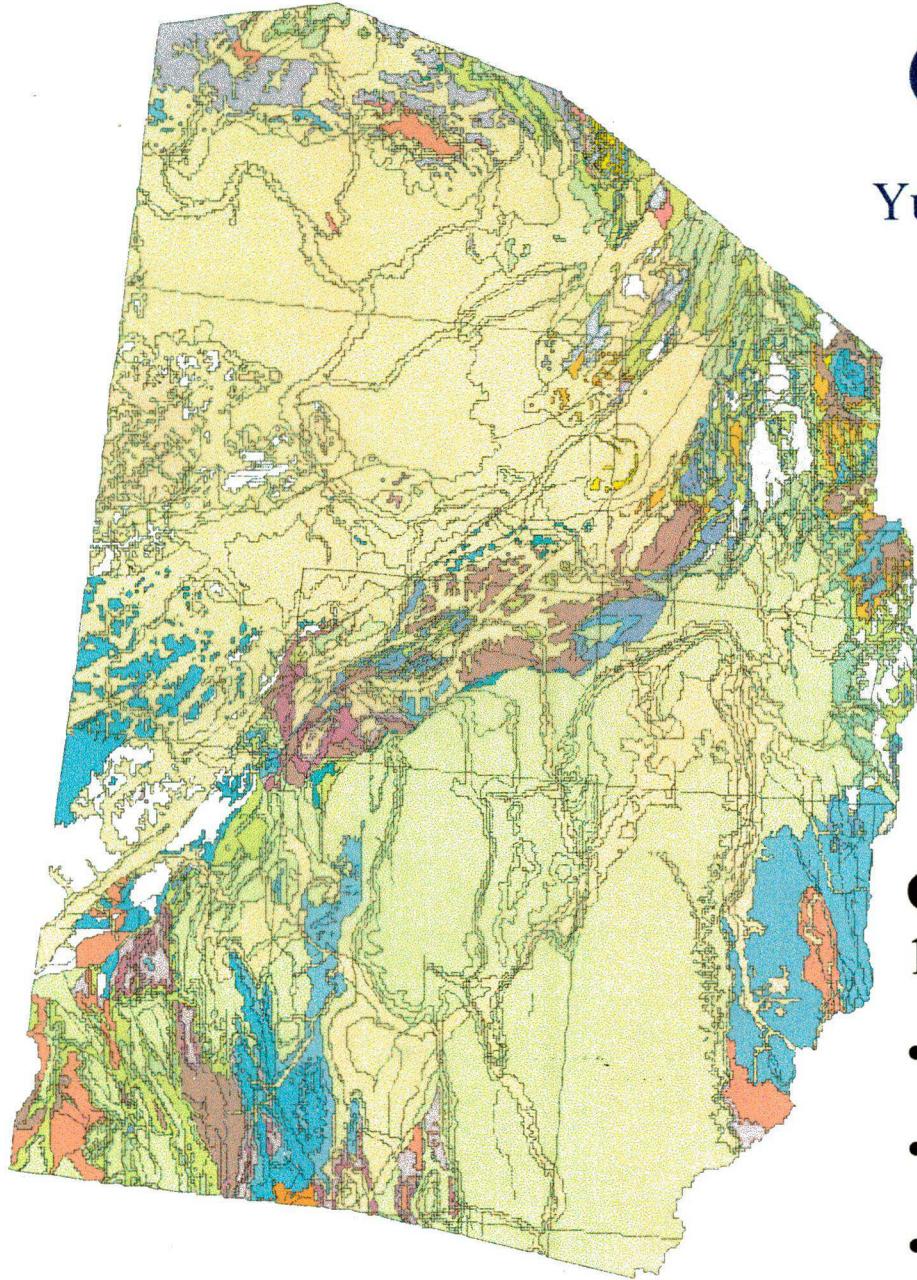
Yukon

Digital Data Sets

- Geology
 - Arcinfo Format
- MINFILE
 - Microsoft Access Database
- Regional Stream Geochemistry
 - Point data
- Airborne geophysics
 - Raster image

Geology

Yukon Digital Geology

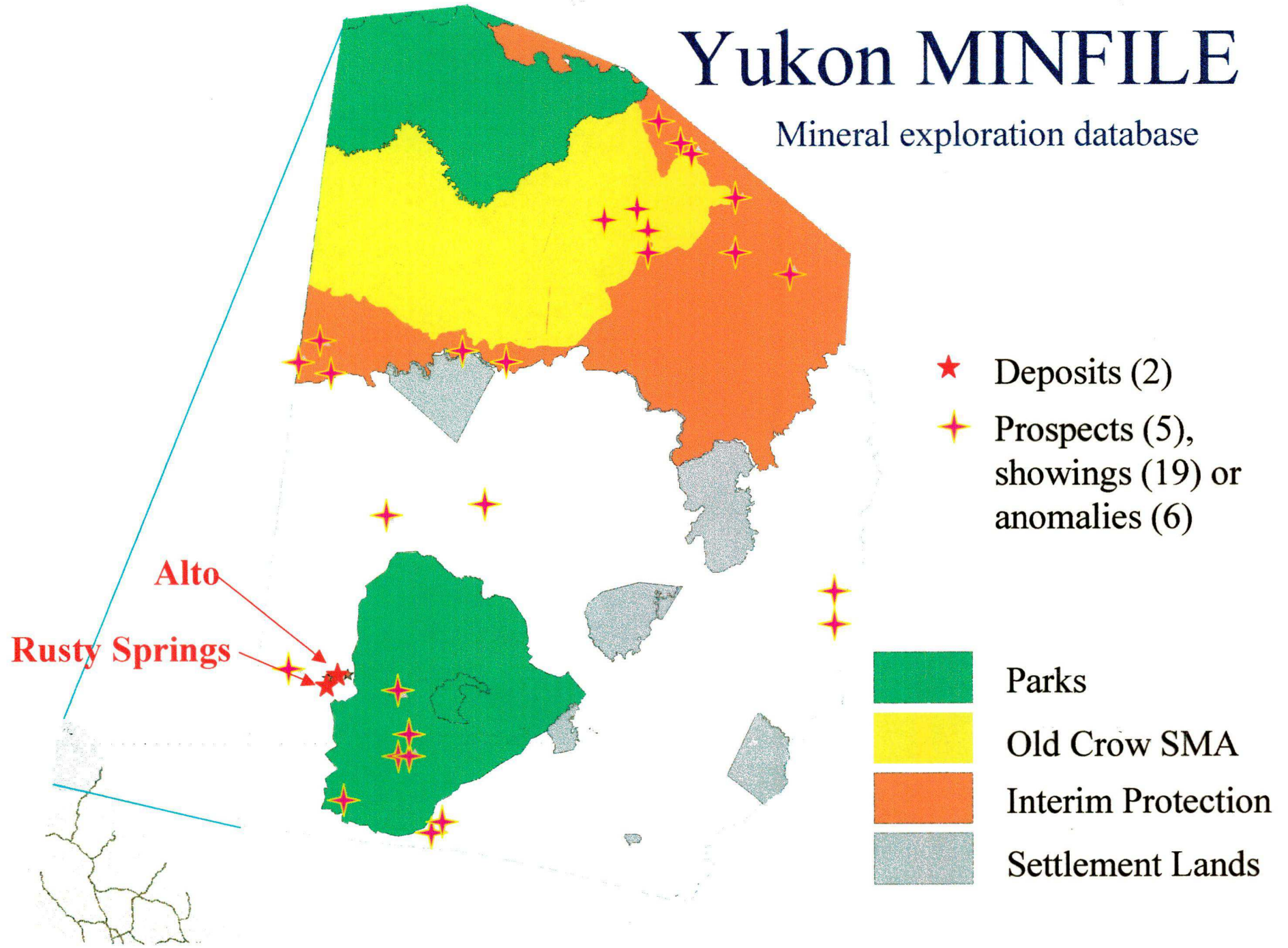


Operation Porcupine (1961-1962): 207,000 km²

- simplified bedrock map (1963)
- GSC Bulletin (Norris, 1997)
- Yukon Digital Geology (2000)

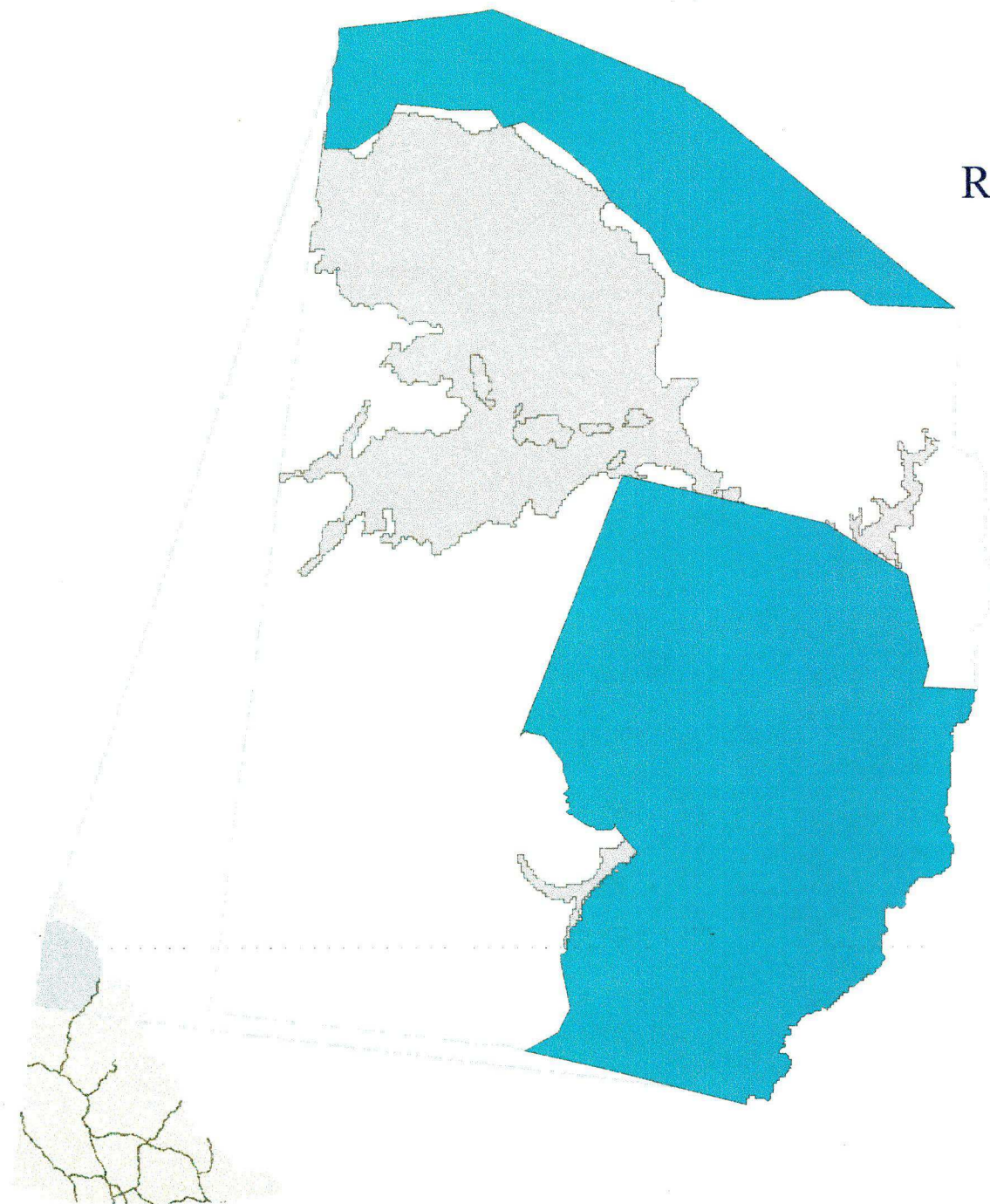
Yukon MINFILE

Mineral exploration database



RGS

Regional Geochemical Surveys



RGS: 40% of
planning area



Glacial Lakes

Exploration History

- Minimal
- Mid-60's
to mid 70's
- No RGS
- No modern
deposit
models






Mineral Belts

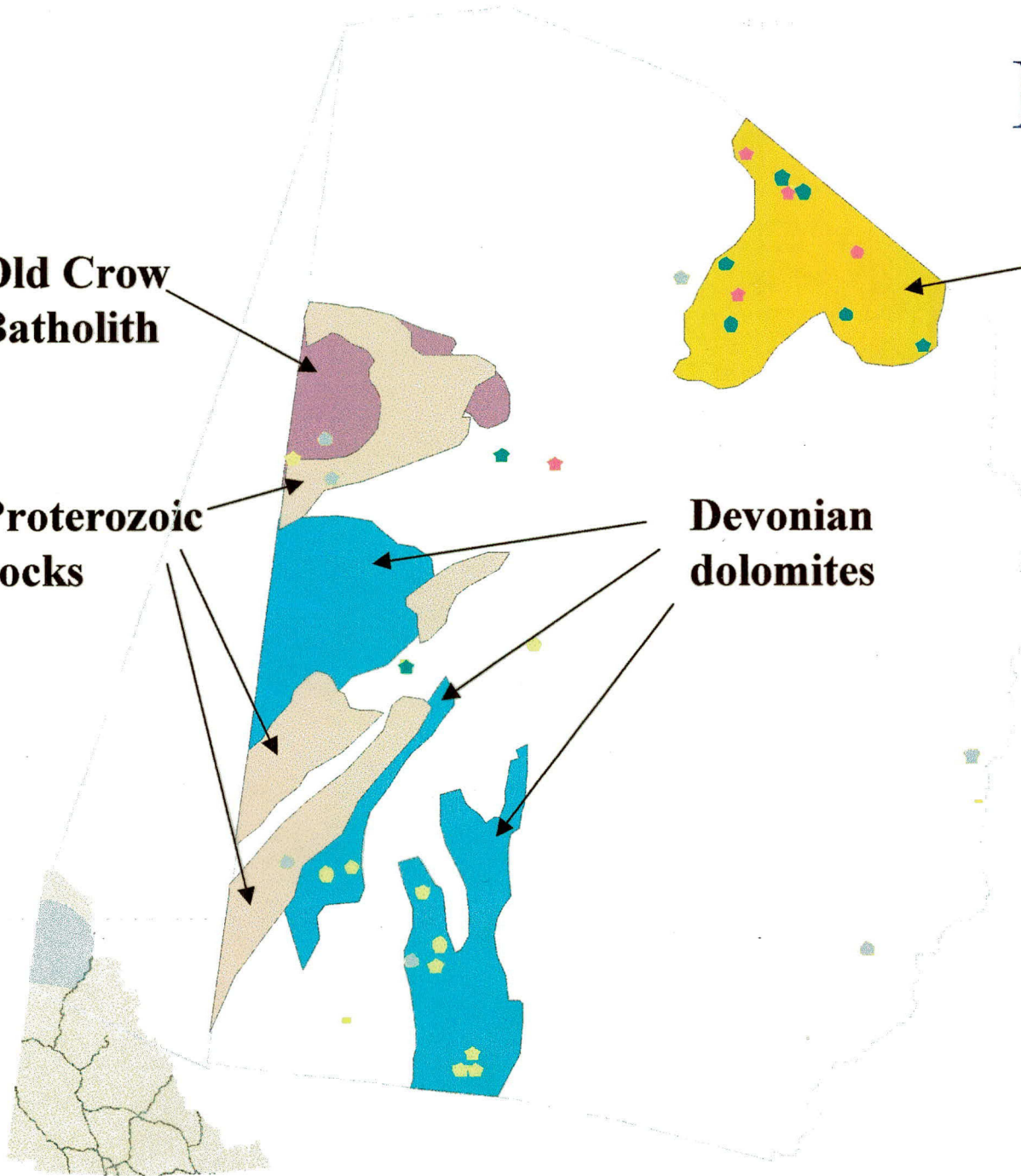
**Old Crow
Batholith**

**Proterozoic
rocks**

**Devonian
dolomites**

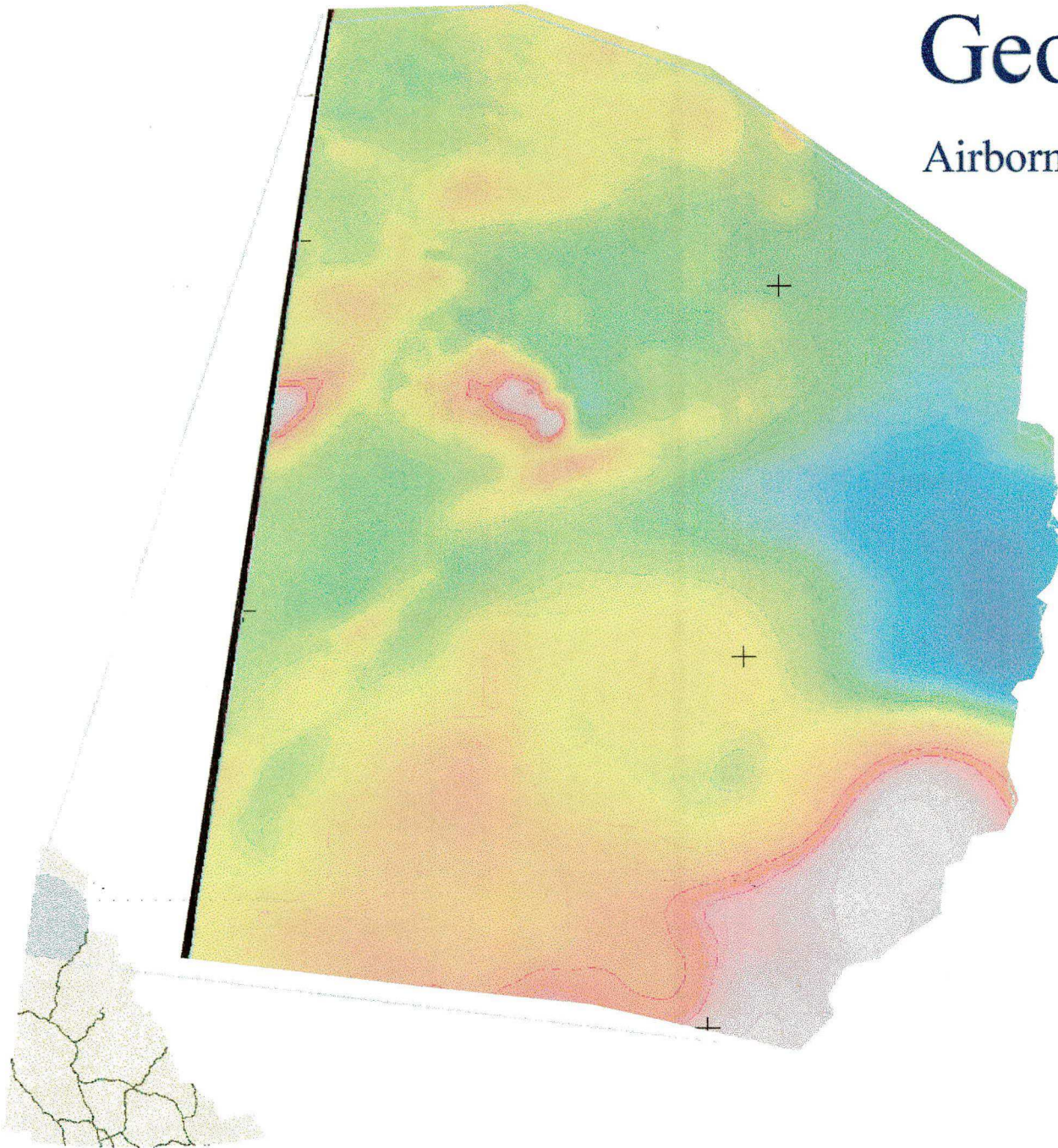
Mesozoic rocks

-  **Pb-Zn**
-  **coal**
-  **uranium**
-  **other**



Geophysics

Airborne Magnetics Survey





- Large ne-trending anomaly
- 2 pronounced features
- several subdued trends

Mineral Assessments

Regional Mineral Potential Maps



-  North Yukon MPM (1999)
-  North Yukon National Park Mineral Assessment (1978)

Conclusions

- No economic or subeconomic mineral deposits
- Mineral potential study required
- Current information suggests relatively low overall potential
- Unusual uncertainty
 - Underexplored
 - Geological Database not up-to-date
 - Gaps in detailed geology
 - RGS coverage incomplete
- Significant discoveries possible