

Regunit	area(km2)	%ecoregion
SDA	0.81	0.00
CPT	1.87	0.01
DB	9.67	0.03
CPA	9.92	0.03
mCH	10.70	0.03
MT	11.70	0.03
ITR	22.46	0.06
DN	44.70	0.13
CSM	60.88	0.17
PCB	124.73	0.35
ice	133.95	0.38
TrJ	163.13	0.46
SDM	271.79	0.76
MK	387.78	1.09
ICS	397.70	1.12
uPCV	524.40	1.48
CPMC	636.14	1.79
Q	1,663.80	4.68
COR	1,682.72	4.74
ICG	1,996.59	5.62
DME	4,544.00	12.79
mKS	4,574.67	12.87
ODR	7,461.27	21.00
PCH	10,798.18	30.39

Regunit	area(km2)	%ecoregion
COR1	1,549.78	4.36
COR2	132.94	0.37
DME	62.77	0.18
DME1	3,504.70	9.86
DME2	976.55	2.75
ICG1	1,759.98	4.95
ICG2	236.61	0.67
ODR	5,351.14	15.06
ODR1	1,185.53	3.34
ODR2	608.54	1.71
ODR3	82.39	0.23
ODR4	233.68	0.66
PCH	3,248.98	9.14
PCH1	2,364.43	6.65
PCH2	358.15	1.01
PCH3	3,466.34	9.76
PCH4	1,319.80	3.71
PCH5	40.49	0.11
CPA	9.92	0.03
CPMC	636.14	1.79
CPT	1.87	0.01
CSM	60.88	0.17
DB	9.67	0.03
DN	44.70	0.13
ice	133.95	0.38
ICS	397.70	1.12
ITR	22.46	0.06
mCH	10.70	0.03
MK	387.78	1.09
mKS	4,574.67	12.87
MT	11.70	0.03
PCB	124.73	0.35
Q	1,663.80	4.68
SDA	0.81	0.00
SDM	271.79	0.76
TrJ	163.13	0.46
uPCV	524.40	1.48

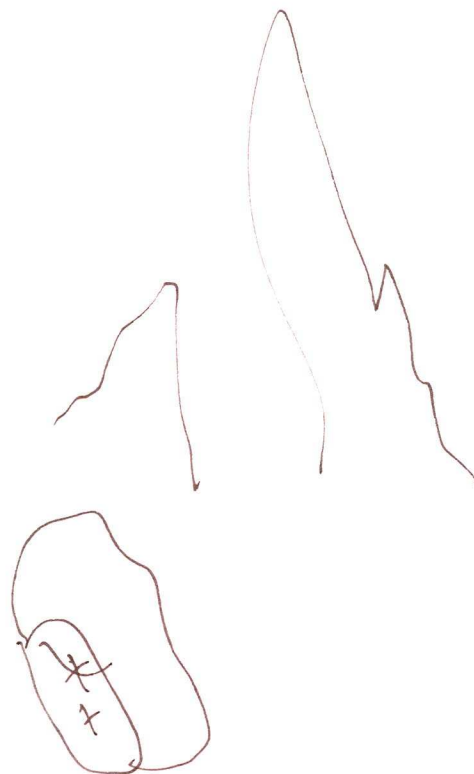
Ecoregion - Assemblages

1(Q)	1663.8	4.68
2 (mKS)	4574.67	12.87
3 (TrJ, CPMC, MK, MT, CPT)	1200.62	3.38
4 (DME)	4544	12.79
5 (DN, DB, SDA, SDM)	326.97	0.92
6 (ODR, COR, CSM, mCH, ICG)	11212.16	31.55
7 (uPCV, PCH)	11322.58	31.86
8 (ICS, PCB)	522.43	1.47
		<hr/>
		99.53

Regunit	area(km2)	%ecoregion
-SDA	0.81	0.00228
-CPT	1.87	0.005263
-DB	9.67	0.027214
(CPA)	9.92	0.027917
-mCH	10.7	0.030112
-MT	11.7	0.032927
(ITR)	22.46	0.063208
-DN	44.7	0.125796
-CSM	60.88	0.171331
-PCB	124.73	0.35102
(ice)	133.95	0.376967
-TrJ	163.13	0.459087
-SDM	271.79	0.764882
-MK	387.78	1.091305
-ICS	397.7	1.119222
-uPCV	524.4	1.475786
-CPMC	636.14	1.790249
-Q	1663.8	4.682329
-COR	1682.72	4.735574
-ICG	1996.59	5.618879
-DME	4544	12.7879
-mKS	4574.67	12.87421
-ODR	7461.27	20.99779
-PCH	10798.18	30.38865

Elf Park		
COR	81.117	1.193314
DME	9.946	0.146315
ICG	3914.458	57.58566
ICS	120.0358	1.765849
mKS	967.9595	14.23967
ODR	9.49296	0.139651
PCH	1556.8	22.90211
Q	56.22597	0.827141
uPCV	81.591	1.20029
	6797.627	

1 (Q)	0.827141
2 (mKS)	14.23967
3 (TrJ, CPMC, MK, MT, CPT)	0
4 (DME)	0.14
5 (DN, DB, SDA, SDM)	0
6 (ODR, COR, CSM, mCH, ICG)	58.919
7 (uPCV, PCH)	24.102
8 (ICS, PCB)	1.765849



assrep_macpass

YEAR	OTHER_NUAUTHOR	COMPANY	AREA_DISTR	NTS	INCLUDES
1968	*18948 Adamson, T.J.	Atlas Exploration Co	Pelly River	105J/15	
1993	•93056 Eaton, D.	Big Creek Resources;	Prospector Mountain	115J/07	
1967	•18947 Smith, C.L.	Atlas Exploration Co	Hess River	105J/13//	
1991	•92978 Schultze, H.C.	Cominco Limited	Macmillan Pass	105J/15	
1972	•91199 McIntosh, R.T.	Hudson Bay Explorati	Sheldon Lake	105J/15	drillhole
1981	•90779 Giroux, G.H. and Montgomery, J.H.	Silver Sceptre Mines	Fuller Lake	105J/16	e m profi
1970	•92904 NA	Northern Empire Mine	Fuller Lake	105J/16	
1977	90256 Rowe, J.D.	British Newfoundland	Fuller Lake	105I/13//	cross-sec

Anna.Fonseca

From: Ella.LeGresley
Sent: Thursday, January 25, 2001 2:28 PM
To: Anna.Fonseca
Cc: Jo-Anne.van Randen; Bob.Kuiper; Shirley.Abercrombie
Subject: File info. on Keele-Itsi area & RRDC SMAs

Hi Anna,

I'm putting away File 3620-08 on Pre-Settlement, General Correspondence, RRDC, and I just took another look through. Given your ongoing (at least for a little while) work and recent presentation on mineral resources in the RRDC Traditional Territory, I thought I'd mention a couple of items in the file, just in case you hadn't seen them:

1. RRDC's written proposal on SMAs, tabled October 8, 1997. This write-up accompanied the map you and I dug up in advance of your presentation. It outlines RRDC's rationale for their SMA interests and describes the natural features and significance of their interests. (I had provided this one to Cris Pekarik while I was still over at Land Claims.)
2. A confidential draft report prepared by Renewable, dated January 1998, on Keele-Itsi/Mac Pass Region called "Conservation Values and SMA Recommendations". (This report was new to me and includes geology by Charlie Roots and a section on boundary considerations, but no maps.)

Your presentation essentially outlined the important mineral values in the area. The above documents give more details on the First Nation's and Renewable's perspectives on important values in the same area. You might have already seen these, and I expect Jo-Anne or Shirley have, but the documents tell some of what the other players are bringing to the discussion. I know you (or Shirley) plan to give the same talk to Renewable, and it's always good to speculate what's on the other parties' minds.

Ella.
5915

Anna.Fonseca

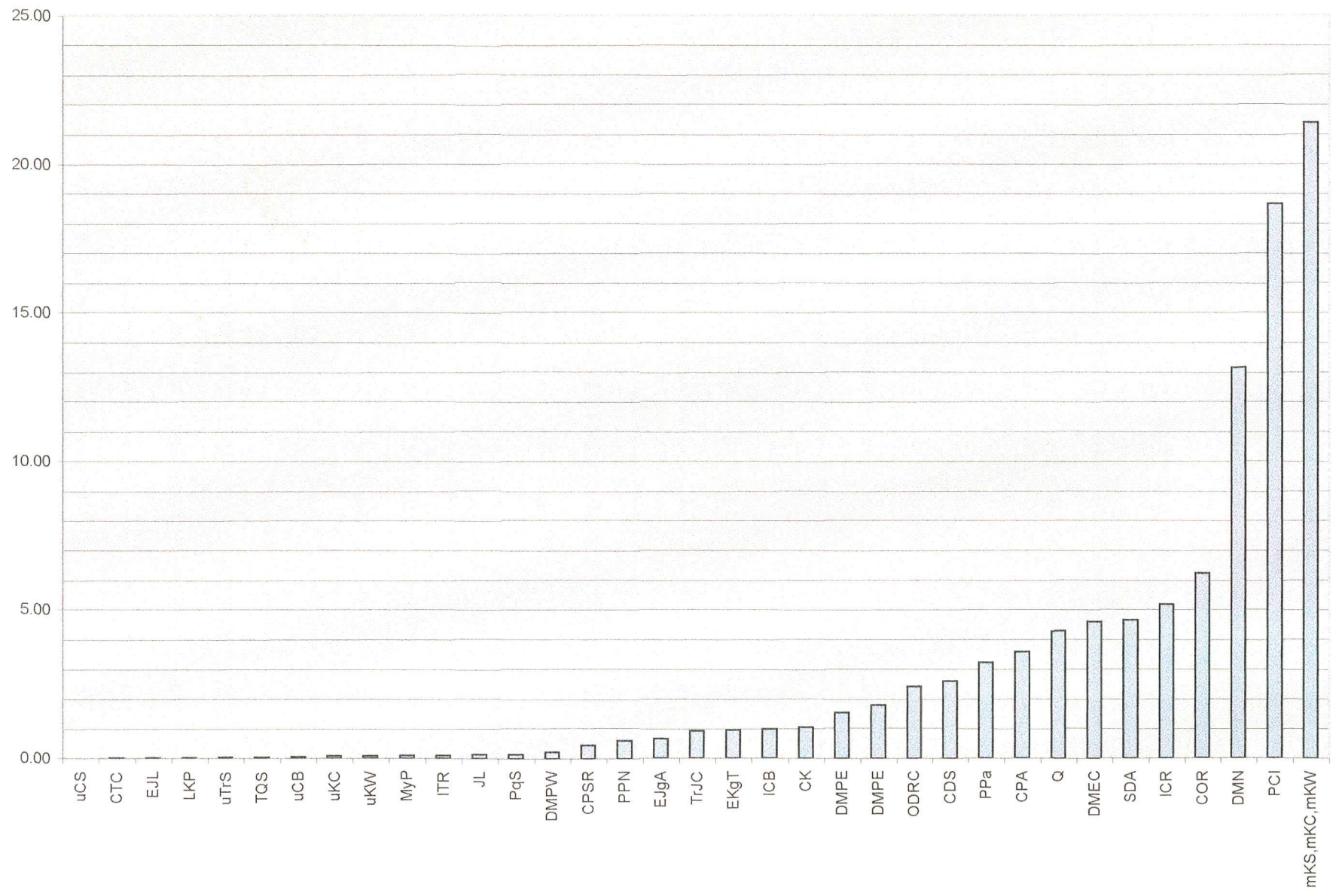
From: Ella.LeGresley
Sent: Tuesday, February 06, 2001 1:10 PM
To: Dermot.Flynn
Cc: Shirley.Abercrombie; Anna.Fonseca; Bob.Kuiper
Subject: A potential head's up - RRDC

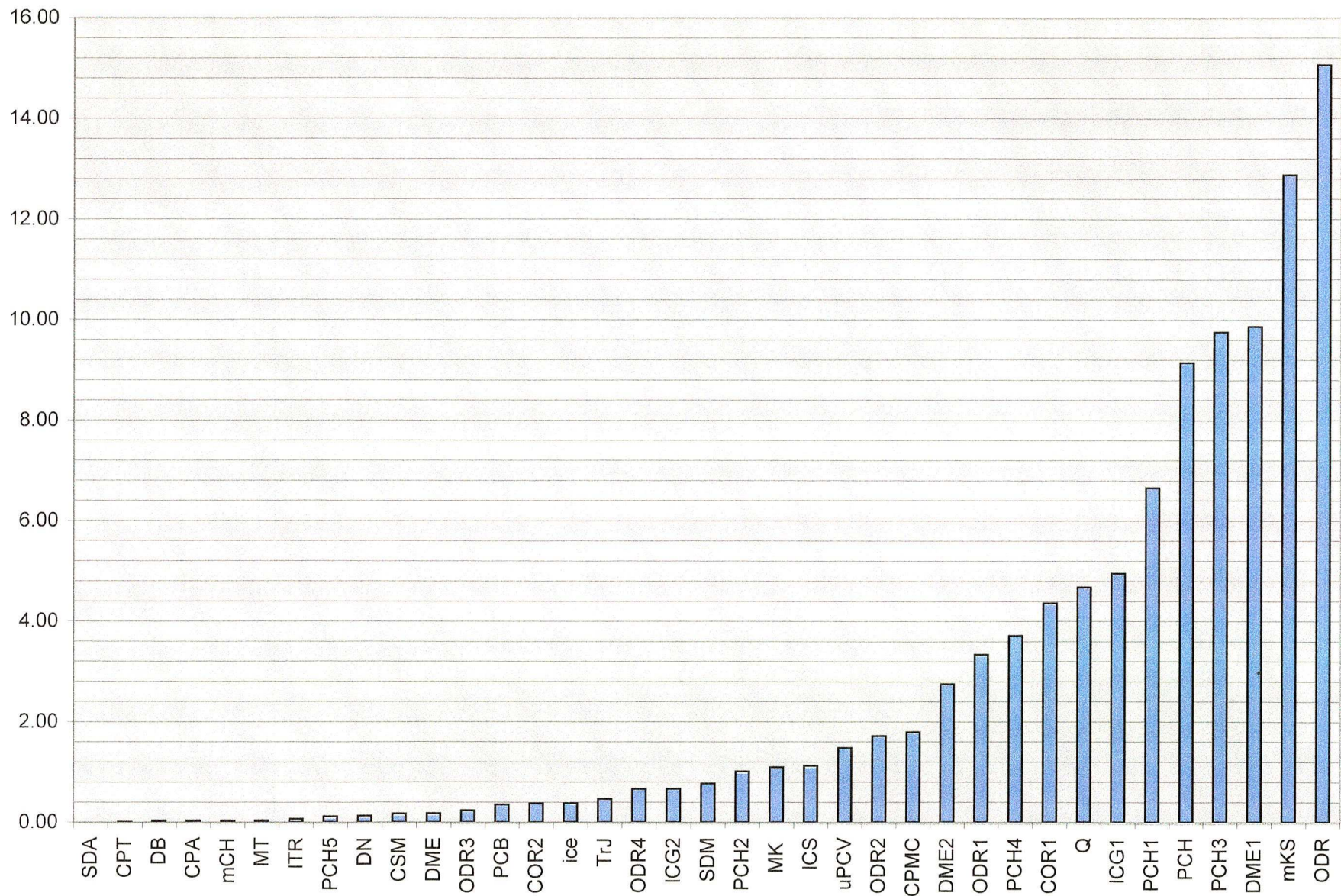
Dermot,

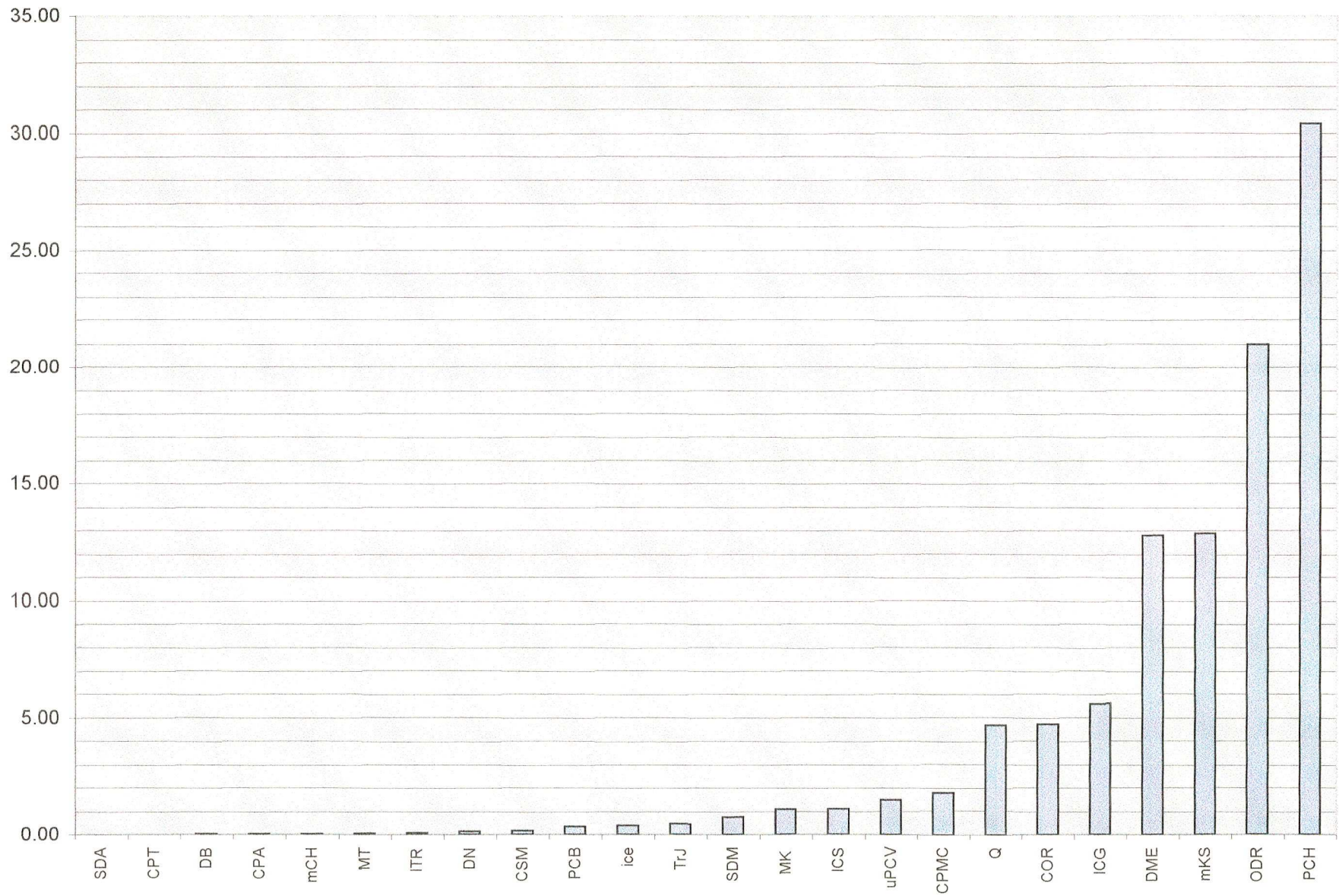
Shirley mentioned that Anna attended a session at the "Round-up" on BC Land Issues. Dave Porter was one of the speakers. At some point in the talk he mentioned something about parks or SMAs and linked it to Mac Pass, possibly Keele-Itsi. Anna said that about half the audience snapped to attention. Some inquiries or pressures could come about. Anna is away for another couple of weeks, but you might want to get more detail when she returns.

Ella.

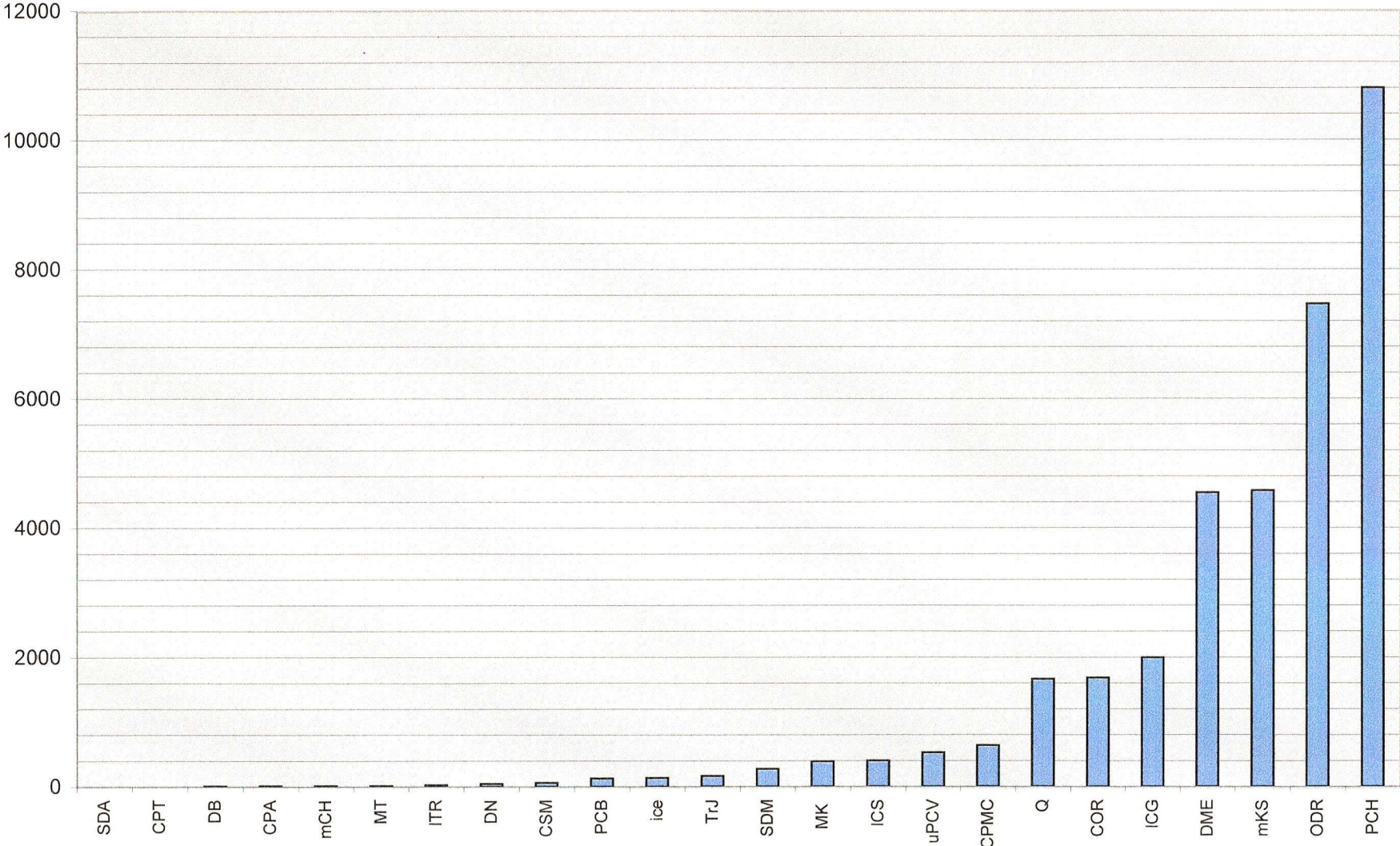
Pelly Mt. Ecoregion
Sorted in increasing order

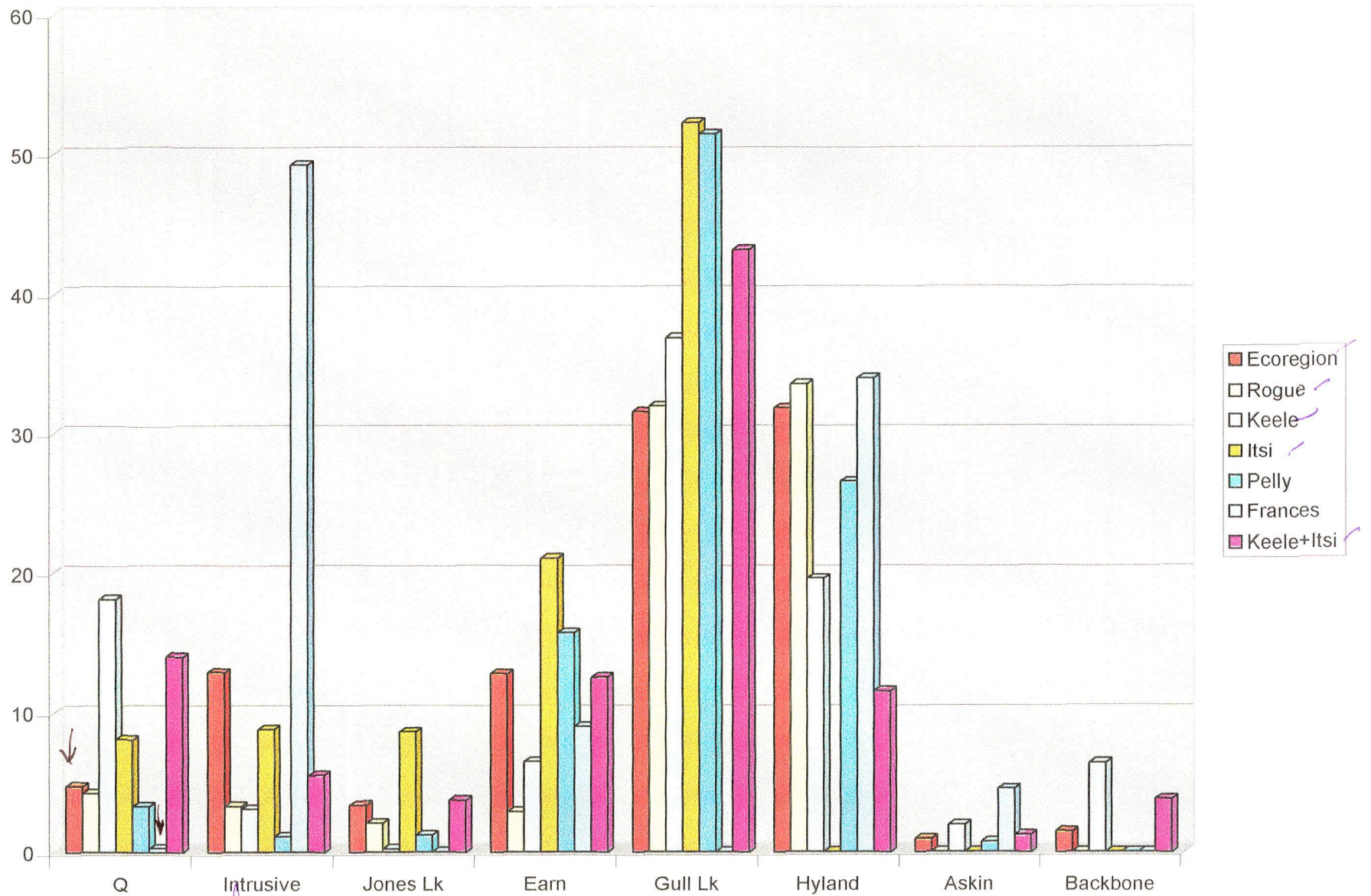






general regunit areas





c

