

Mineral Resource Assessment
Tentative Project Schedule

9004/6

2000 Field Season Plan

Project	task	deadline	geologist	helicopter hours
MacPass SMA - Itsi	Fieldwork: 16 days Map and report	July 26 - Aug. 12 Nov-00	Fonseca, Heon, VanRanden	12
Ddhaw Ghro HPA	Fieldwork: 12 days Map and report	June 18 - 29 Nov-00	Fonseca, Heon	5
La Biche (includes Wolf Lake)	Fieldwork: 18 days Map and report	July 5-22 Nov-00	Fonseca	7
Arctic Circle/Dempster/Eagle	Fieldwork: <14 days	July 5-19	Heon	?
Nordenskiold	Fieldwork: 10 days Assessment Workshop? Map and report	June 1-10 Nov-00 Dec-00	Fonseca, Allen	0
Frances Lake SMA (could include Wolf Lake)	Fieldwork: 10 days Map and report	Aug.13-23 Nov-00	Fonseca, Heon, Hart	3

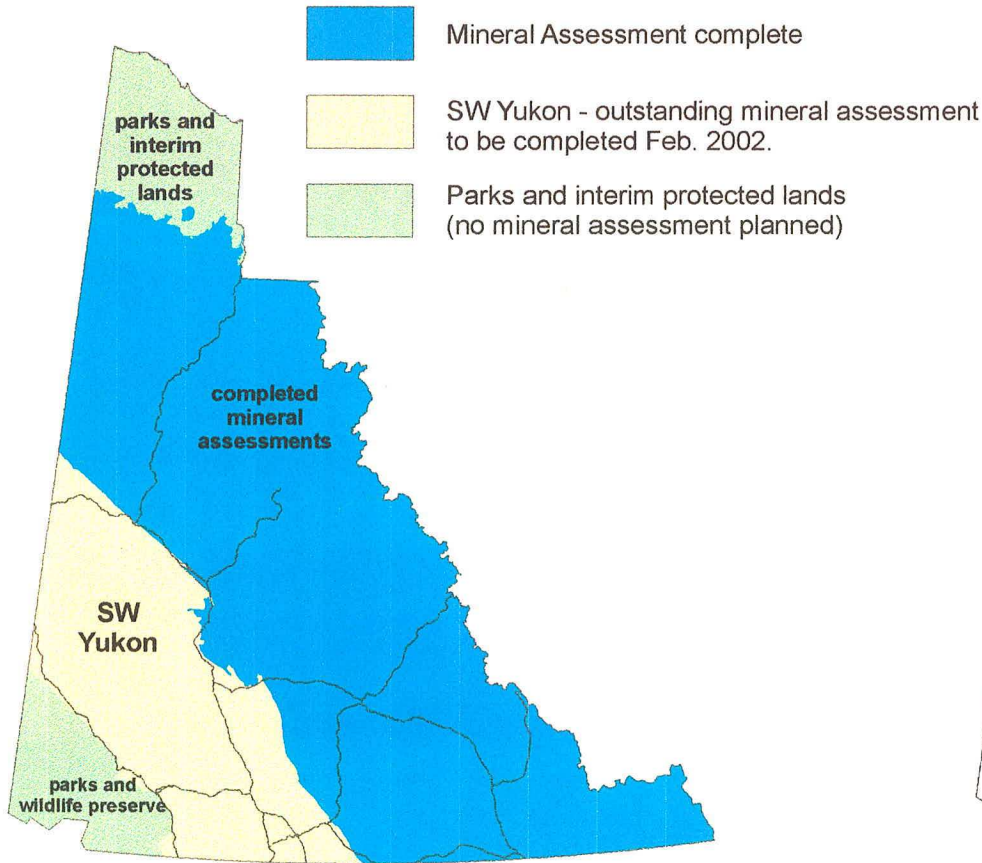
2001-2002 Tentative Fieldwork Plan

Project	Task	deadline	geologist
Mac Pass (Itsi)	Fieldwork: 2 weeks	2001	Fonseca, Heon, VanRanden
Eagle Plain Ecoregion	Fieldwork: 1 week	2001	Heon
Ddhaw Ghro	Fieldwork: 10 days	2001	Fonseca, Heon
Bonnet Plume Watershed	Fieldwork: 2 weeks	2001	Fonseca, Heon
Peel River Watershed	Fieldwork: 2 weeks	2001	Fonseca, Heon
Arctic Circle/Dempster	Fieldwork: 1 week	2001	Heon
Wolf Lake	Fieldwork: 2 weeks	2001	Fonseca
Scottie Creek HPA		2001	
Horseshoe Slough SMA		2001	
Coal River SMA		2001	
Wellesley Lake SMA		2001	
Pickhandle Lakes HPA		2001	
Snafu/Tarfu SMA		2001	
Tatshenshini Heritage River		2001	

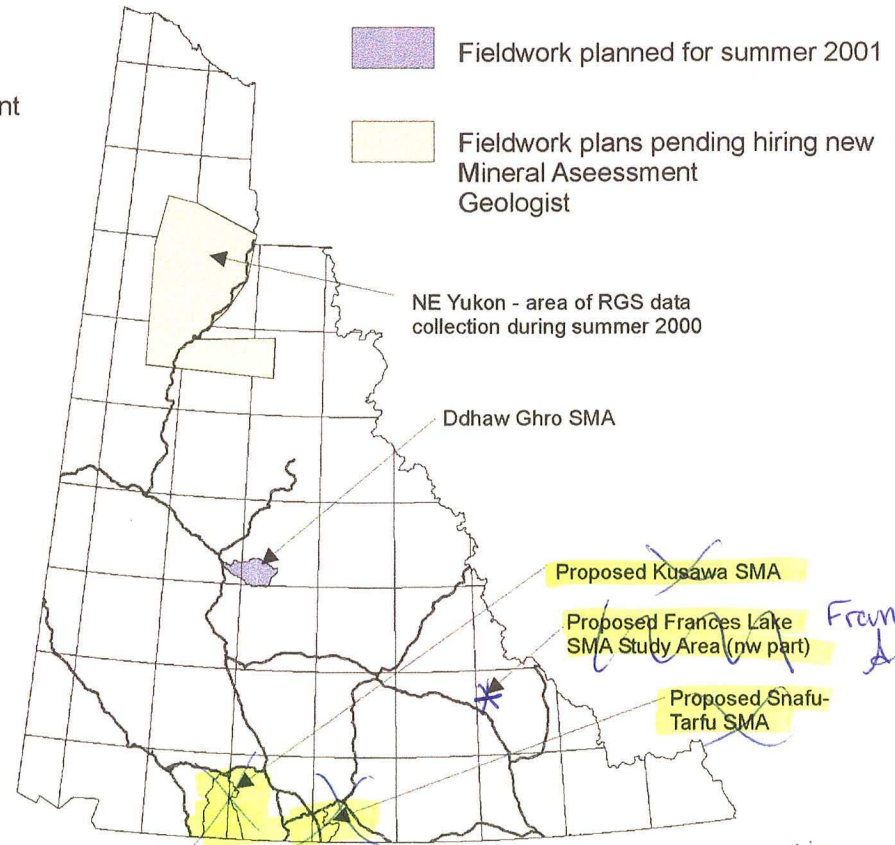
Selwyn Basin - Regional	Assessment workshop Map and report	Feb-01 Apr-01	Fonseca, Heon
Stikine, Coast Plutonic - Regional	Assessment workshop Map and report	Feb-02 Apr-02	

Mineral Resource Assessments

Regional



Detailed



The Mineral Resources Branch is in the process of completing a Mineral Potential Map of the Yukon that will be used to help identify areas of interest for YPAS. The regional mineral potential map was divided into four phases, three of which are complete.

The assessment workshop (approximately 8 days) for Southwest Yukon will take place in December 2001, and the mineral potential map is scheduled to be completed by February, 2002. Maps from the four phases will be pieced together to complete the Mineral Potential Map of Yukon by April 2002.

Fieldwork (geological mapping and sampling) is planned for Ddhaw Ghro SMA and the northwestern portion of the proposed Frances Lake SMA Study Area.

Fieldwork in Ddhaw Ghro will involve 6 camps (approximately 4 weeks) in the southeastern and northwestern portions of the SMA. The detailed mineral resource assessment (1 day) of Ddhaw Ghro will take place in January 2002.

In the Frances Lake Study Area, a helicopter on contract to the Yukon Geology Program will be within a 15 minute flight to the 2 camps (approximately 10 days) from where mapping and sampling may delineate the northwesterly extension of the volcanic unit hosting the Matt Berry deposit. Currently the Frances Lake Study Area has no designation of protection. A report with findings and recommendation will be prepared by October, 2001.

Depending on availability of a second Mineral Assessment Geologist, field work could be conducted in the proposed Snafu-Tarfu SMA, proposed Kusawa SMA, and in northeast Yukon, in the area where RGS data was collected in the summer 2000.

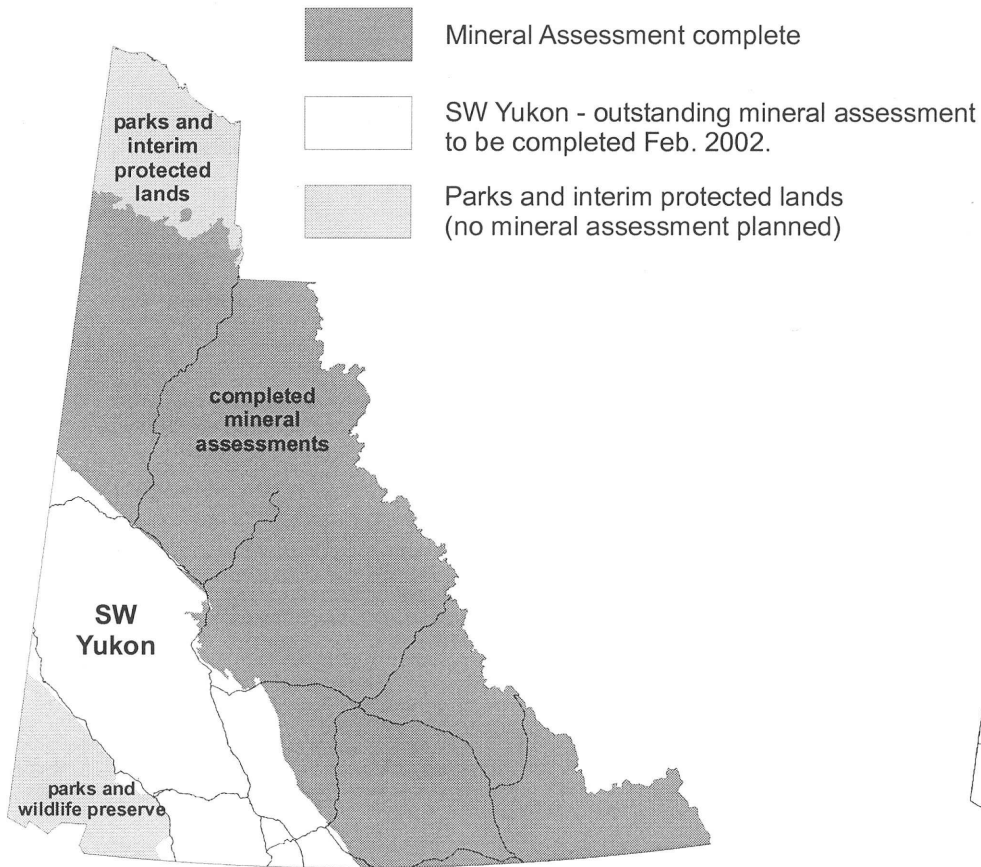
in the Frances Lake area.

other

areas which are proposed as SMAs for the non-settled First Nations

Mineral Resource Assessments

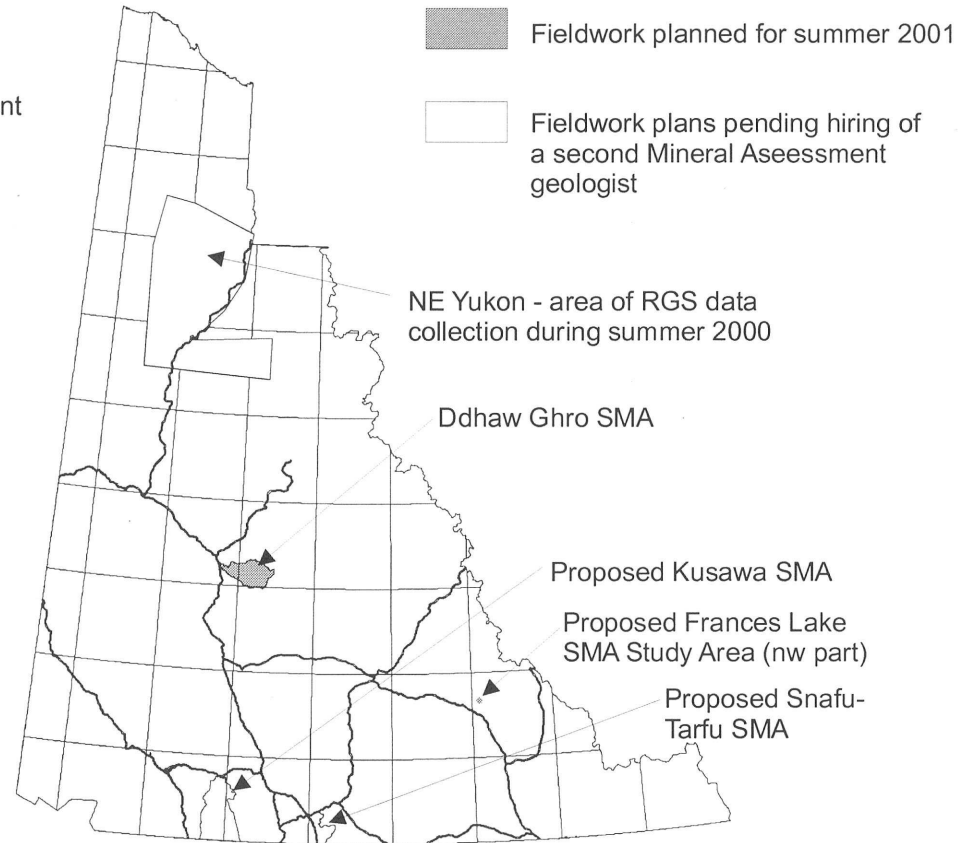
Regional



The Mineral Resources Branch is in the process of completing a Mineral Potential Map of the Yukon that will be used to help identify areas of interest for YPAS. The regional mineral potential map was divided into four phases, three of which are complete.

The assessment workshop (approximately 8 days) for Southwest Yukon will take place in December 2001, and the mineral potential map is scheduled to be completed by February, 2002. Maps from the four phases will be pieced together to complete the Mineral Potential Map of Yukon by April 2002.

Detailed



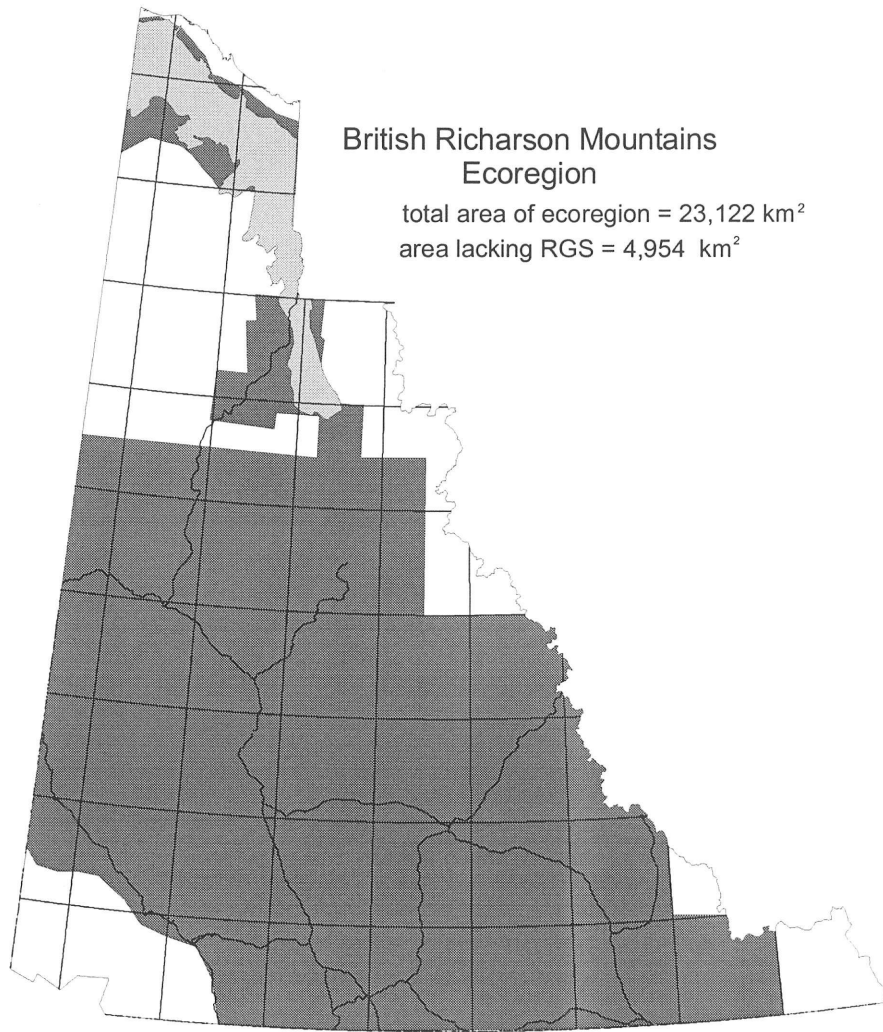
Fieldwork (geological mapping and sampling) is planned for Ddhaw Ghro SMA and the northwestern portion of the proposed Frances Lake SMA Study Area.

Fieldwork in Ddhaw Ghro will involve 6 camps (approximately 4 weeks) in the southeastern and northwestern portions of the SMA. The detailed mineral resource assessment (1 day) of Ddhaw Ghro will take place in January 2002.

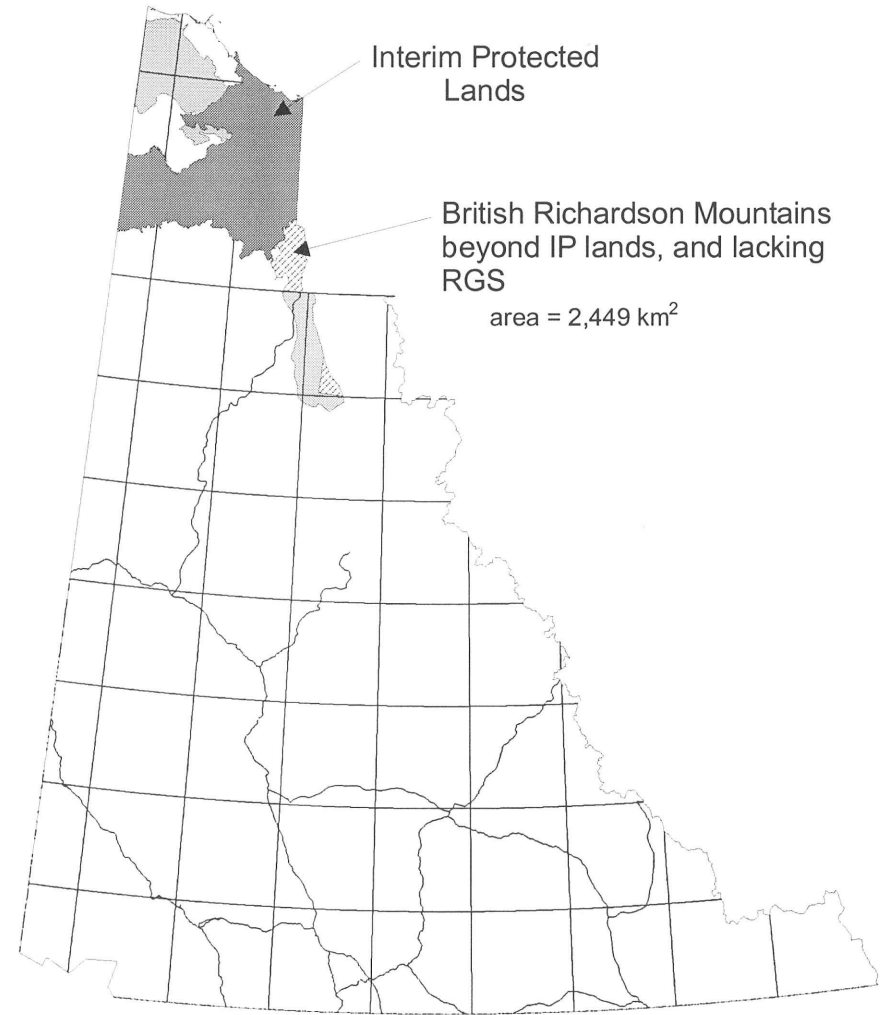
In the Frances Lake Study Area, a helicopter on contract to the Yukon Geology Program will be within a 15 minute flight to the 2 camps (approximately 10 days) from where mapping and sampling may delineate the northwesterly extension of the volcanic unit hosting the Matt Berry deposit. Currently the Frances Lake Study Area has no designation of protection. A report with findings and recommendation will be prepared by October, 2001.

Depending on availability of a second Mineral Assessment Geologist, field work could be conducted in the proposed Snafu-Tarfu SMA, proposed Kusawa SMA, and in northeast Yukon, in the area where RGS data was collected in summer 2000.

British Richardson Mountains Ecoregion



Map showing British Richardson Mountains Ecoregion (light gray), areas with RGS coverage (dark gray), and roads.



Map showing British Richardson Mountains Ecoregion (light gray), Interim Protected Lands (dark gray), area of BRM Ecoregion that are not interim protected and lack RGS coverage, and roads.

Nordenskiold

Ecoregion: Yukon-Plateau-Central

Status: Temporary withdrawal from staking since 1997
PC order expires August 2000

First Nation: Little Salmon/Carmacks

Process: Land Claims SMA

Mineral Interest: 6 MINFILE records adjacent to the boundaries, several more within 10 km

Size: 77 km²

Access: Entirely along North Klondike Hwy.
Several minor roads and trails west of the highway

Previous geological work: 1:250,000 scale mapping by Tempelman-Kluit (1984)

Proposed work: 10 days of field work;
1:20,000 scale mapping and prospecting in the HPA and immediately adjacent areas

Purpose of fieldwork: To refine mapping of coal-bearing units;
To characterize the geological environment and metallogeny of skarn showings;
To identify critical access considerations.

Products: Final report, 1:20,000 geological and land base compilation map and cross-sections, and extended MINFILE descriptions – November, 2000.

Assessment workshop: Fall 2000

Eagle Plain – Richardson Mountains

- Ecoregions:** Eagle Plain, British-Richardson Mountains
- Status:** Areas of conservation interest;
Areas withdrawn from Oil and Gas calls for nominations
Ecoregions approved by cabinet for YPAS work
- First Nations:** Na-Cho Nyak Dun
Vuntut Gwitchin
- Process:** YPAS
- Mineral Interest:** 5 MINFILE records in the area withdrawn from Oil and Gas call for nomination
- Size:** uncertain
- Access:** limited road access along Dempster Hwy.
Mostly helicopter access
- Previous geological work:** Mapping and prospecting by Heon, 1995, 1996
- Proposed work:** 10 days of fieldwork
- Purpose of fieldwork:** To complete fieldwork initiated in 1995;
To characterize exhalative rare metal mineralization;
To identify possible sources of RGS anomalies in Eagle Plain Basin.
- Products:** 1:50,000 scale geological map and report – Spring 2001.
- Estimated helicopter hours:** 10

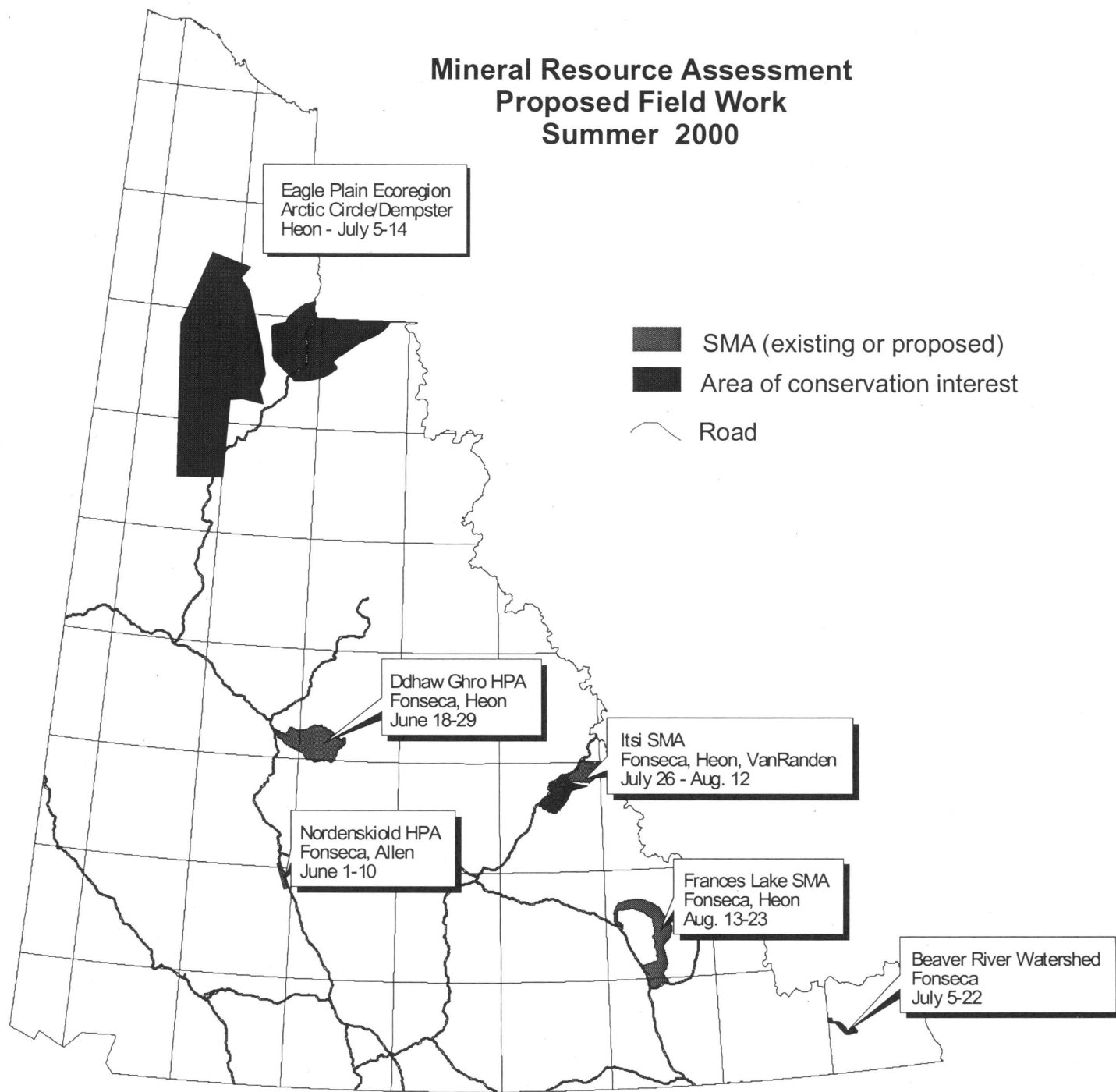
Mac Pass (Itsi)

- Ecoregion:** Selwyn Mountains
- Status:** Itsi SMA negotiated but not approved by cabinet or First Nation
An additional HPA proposed by land claim negotiators adjoining Itsi SMA (not agreed to by Economic Development)
- First Nation:** Ross River Dena Council
- Process:** Land claims SMA
Possibly YPAS
- Mineral interest:** Adjacent to the largest lead-zinc deposits of North America
Numerous active claim blocks;
Exploration projects active in Summer 2000
- Size:** uncertain
- Access:** limited road access (North Canal Rd.)
Mostly helicopter access
- Previous geological work:** 1:50,000 scale mapping by Abbott (1997)
- Proposed work:** 2 weeks of fieldwork (1:20,000 geological and land base mapping;
Additional fieldwork in Keele or other identified proposed SMA to be carried out in 2001.
- Purpose of fieldwork:** To identify critical access considerations and document existing access roads and trails;
To characterize geochemical anomalies and metallogeny of the area southwest of the proposed Itsi SMA.
- Products:** Preliminary 1:20,000 geological and land base maps and report – November 2000.
- Estimated helicopter hours:** 12

Ddhaw Ghro Habitat Protection Area

- Ecoregion:** Yukon Plateau North
- Status:** Withdrawn from staking since 1997
Map notation of HPA since early 1970's
- First Nation:** Na-Cho Nyak Dun
- Process:** Land Claims SMA
Possible southerly extension through YPAS
- Mineral Interest:** 6 MINFILE records inside the boundaries, many more outside;
Selwyn Basin lithology intruded by Anvil-Cassiar Suite plutons;
Part of Tintina Gold Belt
- Size:** 1610 km²
- Access:** Mostly helicopter
Southwest corner adjacent to North Klondike Hwy.
- Previous geological work:** 1:250,000 scale mapping by Roots (1996)
- Proposed work:** 12 days field work (mapping, prospecting, and sampling) in the southeastern and central part of the HPA;
Work would involve two geologists (AF, DH), moving camp once;
Additional fieldwork to be carried out in the western part of the SMA in 2001.
- Purpose of fieldwork:** To verify possible sources of geochemical anomalies;
To characterize reported alteration in Earn Group sediments;
To characterize the potential of a mapped unconformity for localizing mineralizing fluids.
- Products:** Preliminary 1:20,000 compilation map, cross-sections, and report – November 2000.
- Estimated helicopter hours:** 5
- Assessment workshop:** Fall 2001

Mineral Resource Assessment Proposed Field Work Summer 2000



2000 Plan

Project	task	deadline	geologist	helicopter hours
MacPass SMA - Itsi	Fieldwork: 16 days Map and report	July 26 - Aug. 12 Nov-00	Fonseca, Heon, VanRanden	12
Ddhaw Ghro HPA	Fieldwork: 12 days Map and report	June 18 - 29 Nov-00	Fonseca, Heon	5
La Biche (includes Wolf Lake)	Fieldwork: 18 days Map and report	July 5-22 Nov-00	Fonseca	7
Arctic Circle/Dempster/Eagle	Fieldwork: <14 days	July 5-19	Heon	?
Nordenskiold	Fieldwork: 10 days Assessment Workshop? Map and report	June 1-10 Nov-00 Dec-00	Fonseca, Allen	0
Frances Lake SMA (could include Wolf Lake)	Fieldwork: 10 days Map and report	Aug. 13-23 Nov-00	Fonseca, Heon, Hart	3
Total:				27 + hours

ECONOMIC DEVELOPMENT 00/01 CAPITAL BUDGET

04-Feb-00

			00/01 Mains	99/00 Suppl	99/00 Mains	98/99 Actual
0201	Employee Travel in Yukon Helicopter	Territory-Wide	30 ✓	48	48	25
0202	Employee Travel Outside Yukon Two geological conferences	Territory-Wide	5 ✓	9	9	2
0203	Other Travel in Yukon Non employ	Territory-Wide	0	.5k	0	1
0204	Travel Out of Yukon - Non employ Outside experts on Mineral Assessment Panels	Territory-Wide	2	10 expert travel	0	3
0207	Contract Services Minerals - Geochemical Analysis , Mineral Assessment , Regional Geochemical Survey) Oil & Gas - Undertake resource assessment projects in support of land sales, parks planning and land claims.	Territory-Wide	166	16k expert analysis	205 + 400 samples 8k	211
0210	Rental Truck rental & Boat rental	Territory-Wide	7	1.5k	9	3
0211	Supplies	Territory-Wide	8	2k	15	0
0212	Postage & Freight Shipping samples	Territory-Wide	1 ✓	2	2	1
0214	Program Materials	Territory-Wide	8 ✓	18	18	9
0218	Field gear, photos, printing communications Telephone; FAX	Territory-Wide	3 ✓	3	3	6
0220	Other Registration fees, etc.	Territory-Wide	2	2	2	1
0222	Computer Related Items Software upgrade; computer accessories	Territory-Wide	17	not ours	32	32
0301	Contributions Age dating; analyses	Territory-Wide	0	10	10	1

520 520 520 397

ACTIVITY 70 Yukon Industrial Support Policy (\$1) ↳ 200k for Oil + Gas

ELEMENT 02 Yukon Industrial Support Policy

0301	Contributions One dollar vote authority	Territory-Wide	0	0	0	0
0301	Contributions VLB Resources (99/00 was last year of 4 year project)	Dawson City	0	413	413	413
			0	413	413	413

ACTIVITY 71 Energy Infrastructure Loans for Resource Development (\$1)

item	#	specs	cost	
notebook	3	Duskbak coil bound WMF-7	16.75	50.25
mylar	1	24' single matt, 20yd roll	74.36	74.36
hand lens	1	Bausch & Lomb Hastings Triplet - 10X	59.5	59.5
rice bags	25	24" x 36"	0.85	21.25
rock hamm	1	E3-23LP	39.5	39.5
Geotul	1	24" handle	59.5	59.5
Axe	1	Sandvik-Hunter	39.75	39.75
Case	1	Pelican Computer Case	219.5	219.5
Flagging taone 12-slee		pink or orange	1.19	14.28
Beargard	1	260g	49.95	49.95
Flare Kit	1		47.95	47.95
		Total		625.54

MINERAL ASSESSMENTS 2-Year Work Plan

1999/00 Plan

PROJECT	DEADLINE	PERSON RESPONSIBLE
North Yukon Mineral Assessment <ul style="list-style-type: none"> Final Report Ranked Tract Map 	May 1, 1999 May 15, 1999	Heon
Tombstone Territorial Park <ul style="list-style-type: none"> Presentation in Dawson City Map and report 	April 19, 1999 mid July, 1999	Heon
Fishing Branch Expansion <ul style="list-style-type: none"> Two weeks of fieldwork 	July, 1999 2000	Heon, new Mineral Assessment Geologist (MAG)
Arctic Circle/Dempster Highway <ul style="list-style-type: none"> Two days of fieldwork Sample location map 	July, 1999 Winter, 1999	Heon, MAG Heon
MacPass SMA <ul style="list-style-type: none"> Fieldwork? 	July, 1999	Heon, MAG
North Yukon Land Use Plan <ul style="list-style-type: none"> Send North Yukon mineral assessment to Land Use Planning Council 	June, 1999	Heon
Land Claims Review	Ongoing	van Randen
Tombstone Territorial Park <ul style="list-style-type: none"> Assisting with map and report 	mid July, 1999	van Randen
Wolf Lake Area Mineral Assessment <ul style="list-style-type: none"> Compiling information for a mineral assessment Mineral Assessment 	Summer, fall 1999 Nov., 1999	van Randen Heon, van Randen, new MAG
Tatshenshini Heritage River <ul style="list-style-type: none"> Review Background Study 	July, 1999	MAG
Selwyn Basin Mineral Assessment (1, 2)	January, 2000 Spring 2001	Heon, van Randen, MAG
West of Tintina Fault Mineral Assessment (1, 2, 3)	January, 2000 Spring 2002	Heon, van Randen, MAG

drive into deposits?
done
what to do next

Nordenskiöld

Dhaw Ghro

La Biche

*Change the order to match
Bryce's*

MINERAL ASSESSMENTS

2000/01 Plan

PROJECT	DEADLINE	PERSON RESPONSIBLE	FIELD SUPPORT BUDGET
Peel River Watershed <ul style="list-style-type: none"> Fieldwork Map and Report 	Summer, 2000 March 31, 2001	Heon	\$50,000
Dhaw Ghro Habitat Protection Area (McArther Wildlife Sanctuary) <ul style="list-style-type: none"> Fieldwork Map and report 	Summer, 2000 March 31, 2001	New Mineral Assessment Geologist (MAG)	\$50,000
Frances Lake SMA <ul style="list-style-type: none"> Fieldwork Map and report 	Summer, 2000 March 31, 2001		\$50,000
Coal River SMA <ul style="list-style-type: none"> Fieldwork Map and report 	Summer, 2000 March 31, 2001		\$10,000
Scottie Creek Habitat Protection Area <ul style="list-style-type: none"> Fieldwork Map and report 	Summer, 2000 March 31, 2001		\$10,000
Wellesley Lake Special Management area <ul style="list-style-type: none"> Fieldwork Map and report 	Summer, 2000 March 31, 2001		\$2,500
Snafu/Tarfu Natural Environment Parks <ul style="list-style-type: none"> Fieldwork Map and report 	Summer, 2000 March 31, 2001		\$7,500
Pickhandle Lakes Habitat Protection Area <ul style="list-style-type: none"> Fieldwork Map and report 	Summer, 2000 March 31, 2001		\$2,500
Fishing Branch <ul style="list-style-type: none"> Regional Geochemistry Survey over High Mineral Values 	Summer, 2000	Heon	\$150,000
Total			\$332,500

?
0

June

Aug

?
0

?
0

?
0

?
0

below Pickhandle

*look @
at ground
2012*

*N of
Klutlan*

Land Claims Review	Ongoing	van Randen	
--------------------	---------	------------	--

Proposed 2001 Field Projects

1 1:50 000 scale bedrock mapping

1. D. Murphy/Colpron/Roots/Gordey
- TGI Finlayson Lake
2. M. Colpron - Glenlyon
3. L. Pigage - Anvil Compilation
4. Tammy Allen/L. Pigage- LaBiche

★ Mineral deposit studies

1. C. Hart - Au Deposits
2. Thorkelson/Hunt
- Wernecke Breccias
3. Creaser- RE-OS Dating
4. Baker-Brewery Creek

◆ Surficial studies

1. W. Lebarge - Placer Deposit and
Water Quality
2. G. Lowey - Stewart River Placers
3. J. Bond - Finlayson Till Geochem

● Topical Studies

1. Johnson/Gladwin
2. Bond - Whitehorse Surficial Geol.
3. TGI - Stewart River Geophysics

