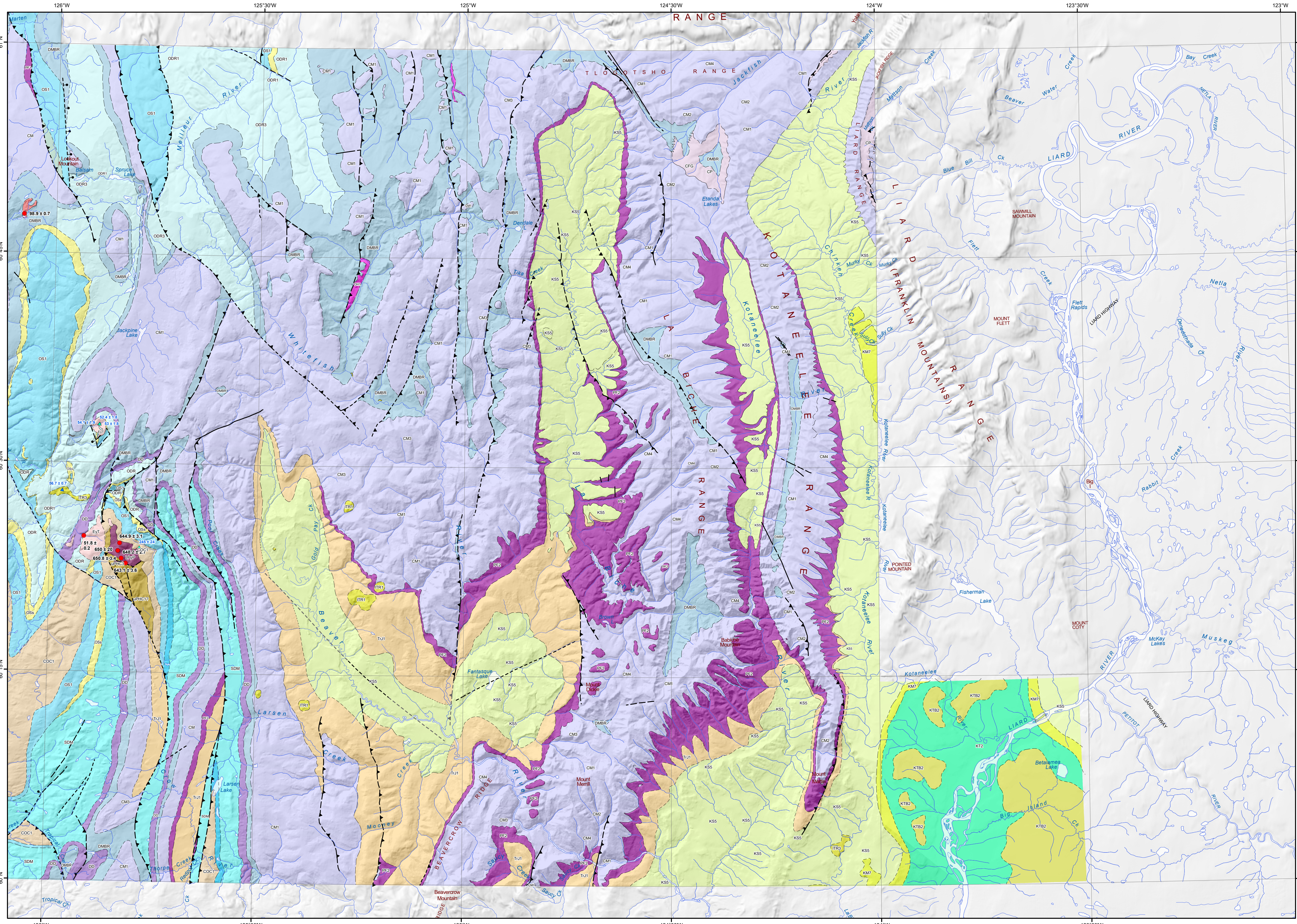
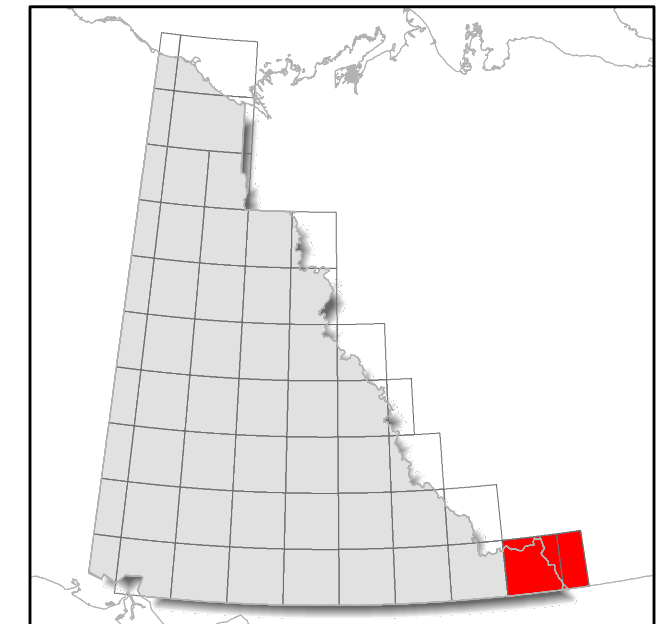


Note: legend contains geological information for the map extent and not the surrounding area.

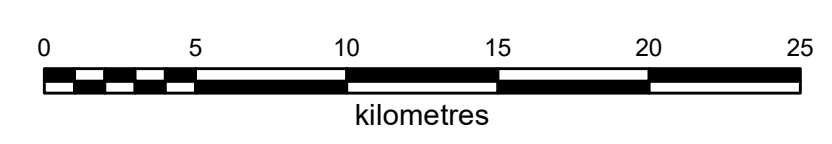


- MINERAL OCCURRENCE**
- ★ Deposit
  - ☆ Historic Deposit
  - Significant exploration project
- GEOCHRONOLOGY METHOD**
- U/Pb, Zircon
  - U/Pb, Other
  - ▲ Ar/Ar
  - ▲ K/Ar
- Eocene**
- EyT: TING SUITE: syenite, dominated by white feldspar with lesser biotite, coarsely crystalline
- LOWER TERTIARY, MOSTLY(?) Eocene**
- ITR3: ROSS: brown, thin-bedded, claystone, siltstone, shale and coal
  - ITR1: ROSS: dark grey-green olivine basalt necks and flows
- UPPER CRETACEOUS**
- KT2: KOTANEELLEE: dark grey concretionary shale; mudstone; grey sandstone
  - KTB2: WAPITI: banded, feldspathic sandstone, coal
- LOWER CRETACEOUS**
- KS5: FORT ST. JOHN: concretionary dark grey and rusty weathering shale
  - KM7: DUNVEGAN: carbonaceous sandstone and pebble conglomerate
- MIDDLE TO UPPER TRIASSIC**
- TrJ1: JONES LAKE: calcareous siltstone, shale, and fine sandstone
- PERMIAN**
- PF2: TIKA, FANTASQUE: limestone, dolostone, chert, shale
- CARBONIFEROUS**
- CM: MATTSON: undivided sandstone, limestone, shale, coal
  - CM4: MATTSON: undivided sandstone, limestone and shale
  - CM3: MATTSON: grey sandstone, limestone and shale
  - CM2: MATTSON: massive bedded, grey to brown sandstone
  - CM1: MATTSON: thinly bedded grey sandstone, shale and coal
- LOWER CARBONIFEROUS**
- CP: PROPHET: dark grey, greyish-orange weathering, well bedded chert
  - CFG: FLETT, GOLATA: limestone overlain by dark grey to black silty shale and mudstone
- DEVONIAN AND MISSISSIPPIAN**
- DMBR: BESA RIVER: black, brown and green shale and argillite; cherty argillite
- MIDDLE DEVONIAN**
- DD: DUNEDIN: limestone, locally dolomitic
  - DH1: HEADLESS: buff-brown weathering argillaceous to silty, fine-grained limestone
- SILURIAN TO MIDDLE DEVONIAN**
- SDM: MUNCHO: dolostone, locally sandy and finely crystalline, minor dolomitic siltstone
- ORDOVICIAN TO LOWER DEVONIAN**
- ODR: ROAD RIVER - SELWYN: black shale and chert, dolomitic siltstone, calcareous shale, buff platy limestone
  - ODR3: SAPPER - SELWYN: blue-grey weathering, black limestone
  - ODR1: DUO LAKE/ELMER CREEK - SELWYN: black graphitic shale and black chert
- UPPER ORDOVICIAN AND SILURIAN**
- OSs: grey to beige quartz arenite, locally conglomeratic
  - OSK2: WHITTAKER/NONDA: thick-bedded, laminated dolostone, chert, argillaceous limestone
- MIDDLE ORDOVICIAN**
- OS1: SUNBLOOD: platy dolostone and limestone
- UPPER CAMBRIAN AND ORDOVICIAN**
- COR1: RABBITKITTLE: thin-bedded, silty limestone and grey lustrous calcareous phyllite
  - COC1: CROW: cream to pink, quartzose to subarkosic sandstone
- NEOPROTEROZOIC**
- uPHC3: KEELE: silty and sandy dolostone, limestone, quartzite and conglomerate
  - uPHC17: TWITYA?: siltstone, shale interbedded with sandstone, granule to pebble conglomerate
  - LPyP: POOL CREEK: medium to coarsely-crystalline, unfoliated pink syenite



1:250 000-scale base data produced by CENTRE FOR TOPOGRAPHIC INFORMATION, NATURAL RESOURCES CANADA  
 Copyright Her Majesty the Queen in Right of Canada  
 30 metre shaded relief from Geomatics Yukon  
 www.geomaticsyukon.ca

**BEDROCK GEOLOGY  
 FORT LIARD (095B) & LA BICHE RIVER (095C)  
 YUKON**



These maps contain the most current bedrock geology information in Yukon. All geological data are from the Yukon Geological Survey and available free of charge. Data are from recent mapping, regional compilations and thesis work.  
 The geological data used to create these maps can be downloaded at <https://data.geology.gov.yk.ca/Compilation/3>.  
 These maps are subject to periodic updates. This map was last updated in February 2022.  
 The Yukon Geological Survey welcomes any revisions or new geological information. Any questions or comments can be directed to [geology@gov.yk.ca](mailto:geology@gov.yk.ca).