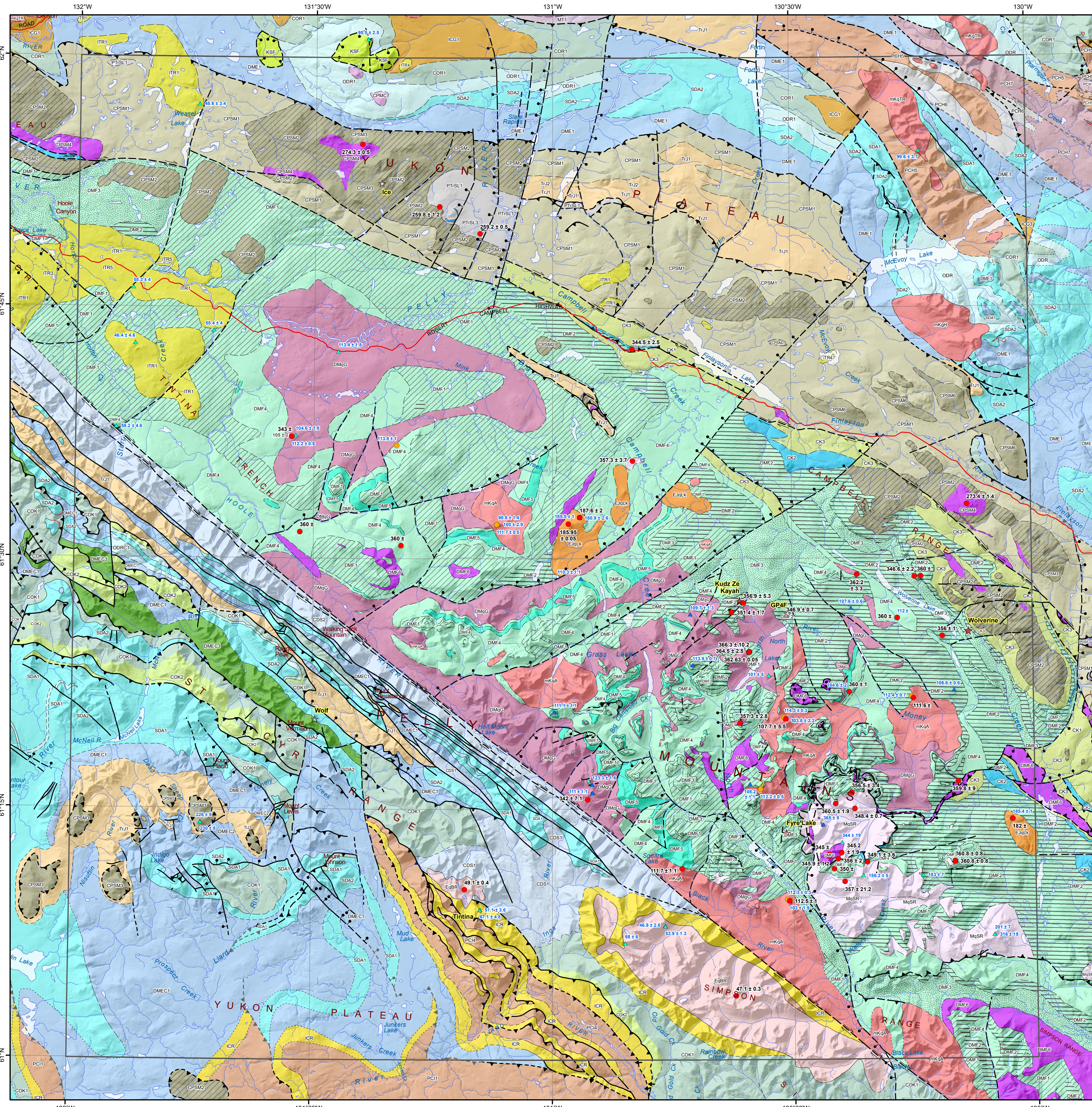
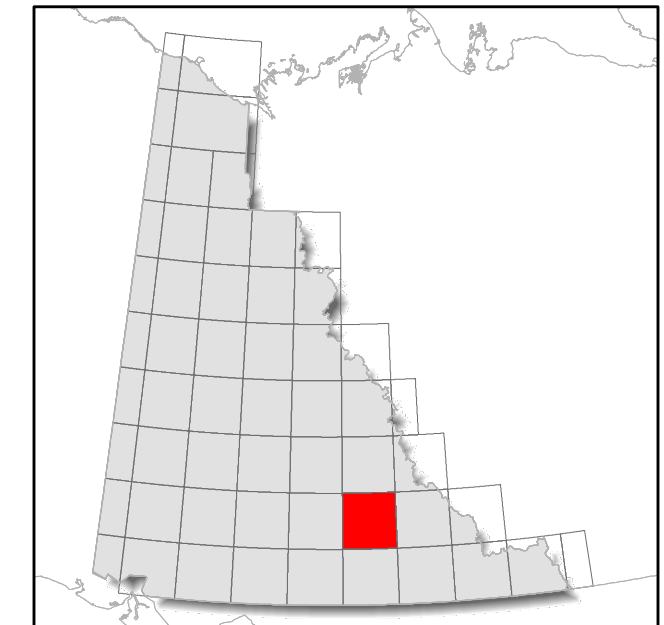


Note: legend contains geological information for the map extent and not the surrounding area.

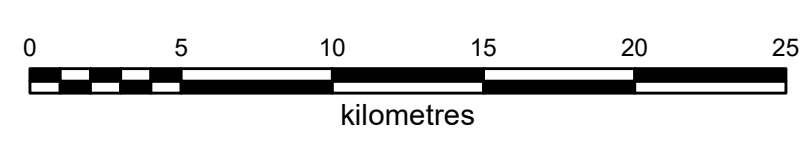


- | | |
|--|---|
| <p>MINERAL OCCURRENCE</p> <ul style="list-style-type: none"> ★ Deposit ☆ Historic Deposit ■ Significant exploration project | <p>GEOCHRONOLOGY METHOD</p> <ul style="list-style-type: none"> ● U/Pb, Zircon ● U/Pb, Other ▲ Ar/Ar ▲ K/Ar |
| <p>Eocene</p> <ul style="list-style-type: none"> EqBR: BLACK RIVER SUITE: K-feldspar-phryic, Bt (± Ms) monzogranite and leucogranite | <p>DMF3: FINLAYSON: dark grey to black carbonaceous metasedimentary rocks, metachert</p> <p>DMF2: FINLAYSON: felsic metavolcanic rocks, white quartz-muscovite schist, metaporphyry</p> <p>DMF1: FINLAYSON: intermediate to mafic volcanic and volcanoclastic rocks</p> |
| <p>LOWER TERTIARY, MOSTLY(?) Eocene</p> <ul style="list-style-type: none"> ITR5: ROSS: gabbro ITR4: ROSS: quartz-feldspar porphyry and rhyolite ITR3: ROSS: brown, thin-bedded, claystone, siltstone, shale and coal ITR1: ROSS: dark grey-green olivine basalt necks and flows | <p>LATE DEVONIAN TO MISSISSIPPIAN</p> <ul style="list-style-type: none"> DMqG: GRASS LAKES SUITE: foliated, coarse-grained, K-feldspar-augen metagranite DMgG: GRASS LAKES SUITE: fine to medium-grained, foliated granodiorite, granite, quartz monzonite |
| <p>MID-CRETACEOUS</p> <ul style="list-style-type: none"> mKqH: HYLAND RIVER SUITE: Bt granodiorite and monzogranite mKqTR: TAY RIVER SUITE: Bt ± Hbl (± clinopyroxene) monzogranite mKqTR: TAY RIVER SUITE: granodiorite mKqA: ANVIL SUITE: K-feldspar megacrystic, biotite ± muscovite monzogranite KSF: SOUTH FORK: welded, biotite-quartz-hornblende-feldspar crystal tuff | <p>UPPER DEVONIAN TO LOWER MISSISSIPPIAN</p> <ul style="list-style-type: none"> DMEC3: EARN - CASSIAR: rhyolite-trachyte to andesite flows, breccia and tuff DMEC2: EARN - CASSIAR: apple green and dark grey, thin-bedded chert and cherty tuff DMEC1: EARN - CASSIAR: black siliceous slate, quartz-chert greywacke, grit and conglomerate |
| <p>EARLY JURASSIC</p> <ul style="list-style-type: none"> EqJLk: LOKKEN SUITE: Bt-Hbl quartz monzonite to granite | <p>DEVONIAN AND MISSISSIPPIAN</p> <ul style="list-style-type: none"> DME1: EARN: laminated slate, fine to medium-grained chert-quartz arenite and wacke |
| <p>MIDDLE TO UPPER TRIASSIC</p> <ul style="list-style-type: none"> TrJ3: JONES LAKE: feldspathic wacke, polymictic pebble conglomerate, crystal lithic tuff TrJ2: JONES LAKE: bioclastic limestone and interbedded sandy or silty limestone TrJ1: JONES LAKE: calcareous siltstone, shale, and fine sandstone | <p>MIDDLE SILURIAN TO MIDDLE DEVONIAN</p> <ul style="list-style-type: none"> SDA2: ASKIN: dolostone, silty and sandy dolostone, limestone SDA1: ASKIN: dolomitic siltstone, dolomitic fine-grained sandstone |
| <p>PERMIAN - LOWER TRIASSIC</p> <ul style="list-style-type: none"> PTS4: SIMPSON LAKE: minor limestone PTS3: SIMPSON LAKE: rare felsic volcanic rocks PTS1: SIMPSON LAKE: polymictic conglomerate, sandstone, dark grey siltstone and shale | <p>ORDOVICIAN TO DEVONIAN, LOCALLY ?MISSISSIPPIAN</p> <ul style="list-style-type: none"> ODRC1: ROAD RIVER - CASSIAR: recessive, black, locally calcareous, fissile, graptolitic shale; quartz arenite, basalt |
| <p>CARBONIFEROUS TO PERMIAN</p> <ul style="list-style-type: none"> CPSM6: SLIDE MOUNTAIN: muscovite-quartz phyllite, augen schist CPSM4: SLIDE MOUNTAIN: brown weathering, variably serpentinized ultramafic rocks CPSM3: CAMPBELL RANGE: grey, red and green chert and argillite CPSM2: CAMPBELL RANGE: dark green to black basalt, greenstone, locally pillowed CPSM1: FORTIN CREEK: dark grey to black carbonaceous phyllite, chert and argillite CPMC: MOUNT CHRISTIE: burrowed, interbedded greenish grey cherty shale and green shale | <p>ORDOVICIAN TO LOWER DEVONIAN</p> <ul style="list-style-type: none"> ODR: ROAD RIVER - SELWYN: black shale and chert, dolomitic siltstone, calcareous shale, buff platy limestone ODR1: DUO LAKE/ELMER CREEK - SELWYN: black graptolitic shale and black chert |
| <p>CARBONIFEROUS</p> <ul style="list-style-type: none"> CK3: KLINKIT: arkosic sandstone, basal polymictic metaconglomerate CK2: KLINKIT: limestone, marble, locally fossiliferous CK1: KLINKIT: mafic to intermediate metavolcanic and metavolcanic rocks; minor felsite | <p>CAMBRIAN TO DEVONIAN OR YOUNGER</p> <ul style="list-style-type: none"> CDS5: ST. CYR: orange to dark blue-grey phyllite and phyllitic limestone CDS2: ST. CYR: calcareous shale, siltstone and argillaceous limestone CDS1: ST. CYR: calcareous shale and silty limestone |
| <p>MISSISSIPPIAN</p> <ul style="list-style-type: none"> MqSR: SIMPSON RANGE SUITE: foliated metagranite, quartz monzonite and granodiorite; augen granite | <p>UPPER CAMBRIAN AND ORDOVICIAN</p> <ul style="list-style-type: none"> COK2: KECHIKA: dark green and maroon amygdaloidal basalt flows and volcanoclastic rocks COK1: KECHIKA: thin-bedded, lustrous, calcareous, grey slate, phyllite, limestone COR1: RABBITKETTLE: thin-bedded, silty limestone and grey lustrous calcareous phyllite |
| <p>DEVONIAN, MISSISSIPPIAN AND(?) OLDER</p> <ul style="list-style-type: none"> DMF6: FINLAYSON: ultramafic rocks, serpentinite; metagabbro DMF5: FINLAYSON: light grey to white marble, locally crinoidal DMF4: FINLAYSON: light green to grey, fine-grained siliciclastic and metavolcanic rocks | <p>LOWER CAMBRIAN</p> <ul style="list-style-type: none"> ICG3: GULL LAKE: marble, calc-silicate ICG1: GULL LAKE: shale, siltstone and mudstone, minor quartz sandstone ICR: ROSELLA: resistant, thick-bedded to massive, limestone and argillaceous limestone |
| | <p>NEOPROTEROZOIC TO LOWER CAMBRIAN</p> <ul style="list-style-type: none"> PCH7: NARCHILLA: interbedded maroon and apple-green slate, siltstone, sandstone PCH6: ALGAE: grey weathering, very fine crystalline limestone, locally sandy PCH5: YUSEZYU: brown to pale green shale, quartz-rich sandstone, grit, pebble conglomerate PC14: INGENIKA?: thin bedded slate, siltstone, quartzite, minor limestone PC11: SWANNELL/TAYDIZ: calcareous sandstone, shale, quartz-eye grit, quartzite |



1:250 000-scale base data produced by CENTRE FOR TOPOGRAPHIC INFORMATION, NATURAL RESOURCES CANADA
Copyright Her Majesty the Queen in Right of Canada
30 metre shaded relief from Geomatics Yukon
www.geomaticsyukon.ca

**BEDROCK GEOLOGY
FINLAYSON LAKE (105G)
YUKON**



These maps contain the most current bedrock geology information in Yukon. All geological data are from the Yukon Geological Survey and available free of charge. Data are from recent mapping, regional compilations and thesis work.

The geological data used to create these maps can be downloaded at <https://data.geology.gov.yk.ca/Compilation/3>.

These maps are subject to periodic updates. This map was last updated in February 2022.

The Yukon Geological Survey welcomes any revisions or new geological information. Any questions or comments can be directed to geology@gov.yk.ca.