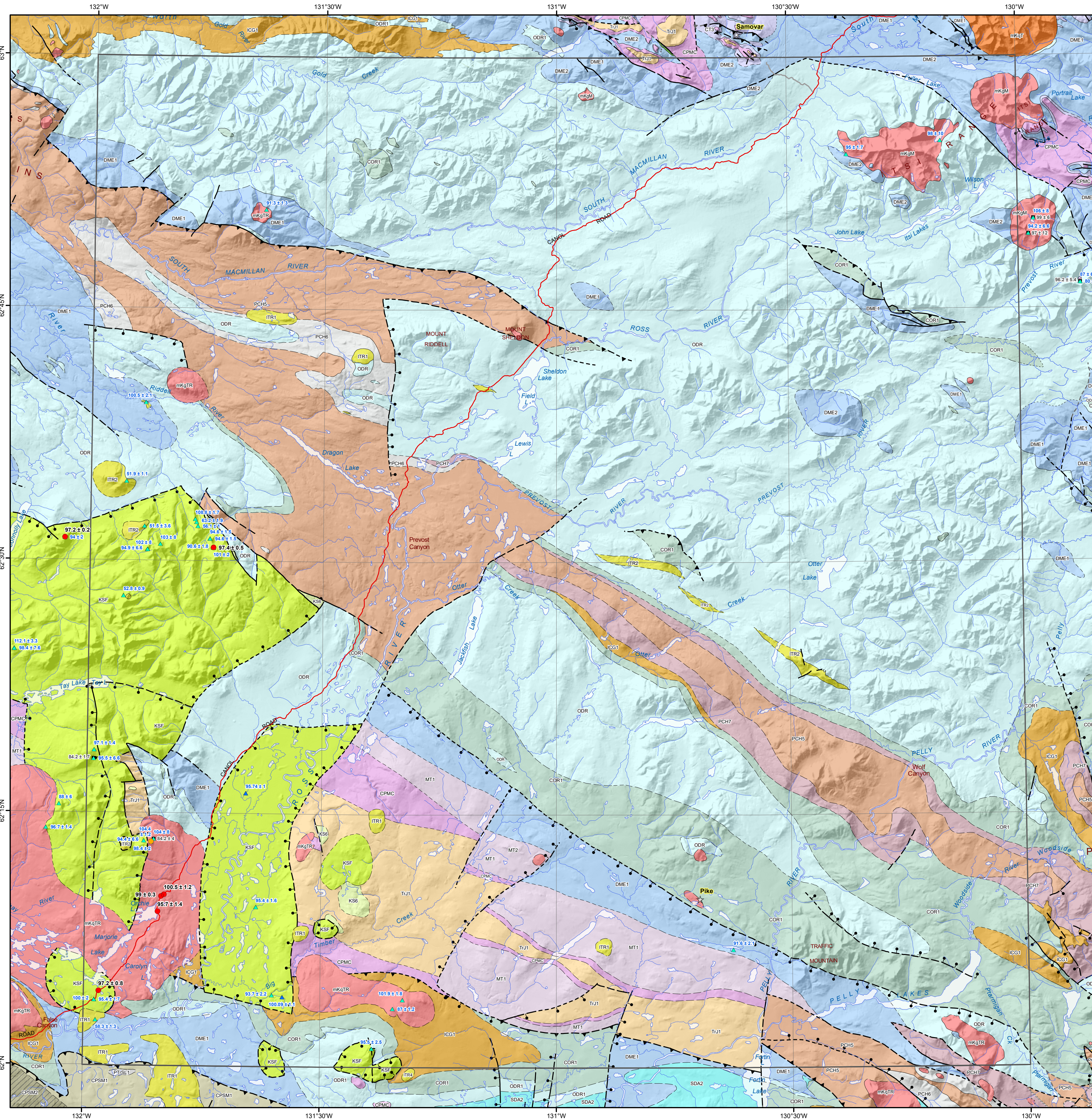


Note: legend contains geological information for the map extent and not the surrounding area.



MINERAL OCCURRENCE

- ★ Deposit
- ☆ Historic Deposit
- Significant exploration project

GEOCHRONOLOGY METHOD

- U/Pb, Zircon
- U/Pb, Other
- ▲ Ar/Ar
- ▲ K/Ar

LOWER TERTIARY, MOSTLY(?) EOCENE

- ITR2: ROSS: rhyolite flows, tuff, ash-flow tuff and breccia
- ITR1: ROSS: dark grey-green olivine basalt necks and flows

MID-CRETACEOUS

- mKgM: MAYO SUITE: Hbl > Bt (± Cpx) quartz monzonite or monzodiorite
- mKgTR: TAY RIVER SUITE: Bt ± Hbl (± clinopyroxene) monzogranite
- mKgTR: TAY RIVER SUITE: granodiorite
- mKgT: TOMBSTONE SUITE: Bt-Hbl clinopyroxene granite
- KSF: SOUTH FORK: welded, biotite-quartz-hornblende-feldspar crystal tuff

LOWER CRETACEOUS

- KS6: BIG TIMBER: chert sandstone and chert pebble conglomerate

MIDDLE TO UPPER TRIASSIC

- TrJ1: JONES LAKE: calcareous siltstone, shale, and fine sandstone

CARBONIFEROUS TO PERMIAN

- CPSM1: FORTIN CREEK: dark grey to black carbonaceous phyllite, chert and argillite
- CPMC: MOUNT CHRISTIE: burrowed, interbedded greenish grey cherty shale and green shale

CARBONIFEROUS

- CT3: TSICHU: chert, and chert pebble conglomerate
- CT2: TSICHU/KENO HILL: black to silvery shale or carbonaceous phyllite
- CT1: TSICHU/KENO HILL: massive to thick-bedded quartz arenite

MISSISSIPPIAN

- MT2: KALZAS: dark grey to black fetid limestone
- MT1: TAY: calcareous, dark grey to brown siltstone and shale

DEVONIAN AND MISSISSIPPIAN

- DME2: EARN: silvery blue weathering black shale, argillite, cherty argillite and chert
- DME1: EARN: laminated slate, fine to medium-grained chert-quartz arenite and wacke

MIDDLE SILURIAN TO MIDDLE DEVONIAN

- SDA2: ASKIN: dolostone, silty and sandy dolostone, limestone

ORDOVICIAN TO LOWER DEVONIAN

- ODR: ROAD RIVER - SELWYN: black shale and chert, dolomitic siltstone, calcareous shale, buff platy limestone
- ODR1: DUO LAKE/ELMER CREEK - SELWYN: black graptolitic shale and black chert

UPPER CAMBRIAN AND ORDOVICIAN

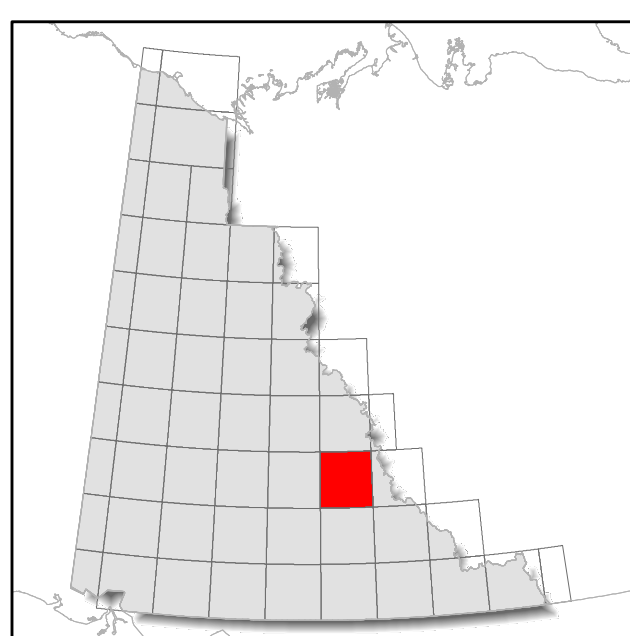
- COR1: RABBITKETTLE: thin-bedded, silty limestone and grey lustrous calcareous phyllite

LOWER CAMBRIAN

- ICG1: GULL LAKE: shale, siltstone and mudstone, minor quartz sandstone

NEOPROTEROZOIC TO LOWER CAMBRIAN

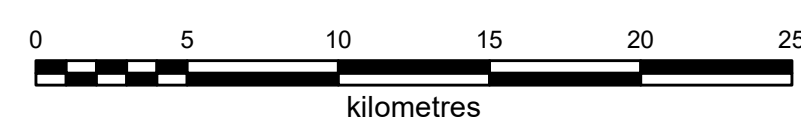
- PCH7: NARCHILLA: interbedded maroon and apple-green slate, siltstone, sandstone
- PCH6: ALGAE: grey weathering, very fine crystalline limestone, locally sandy
- PCH5: YUSEZYU: brown to pale green shale, quartz-rich sandstone, grit, pebble conglomerate



1:250 000-scale base data produced by CENTRE FOR TOPOGRAPHIC INFORMATION, NATURAL RESOURCES CANADA
Copyright Her Majesty the Queen in Right of Canada

30 metre shaded relief from Geomatics Yukon
www.geomaticsyukon.ca

**BEDROCK GEOLOGY
SHELDON LAKE (105J)
YUKON**



These maps contain the most current bedrock geology information in Yukon. All geological data are from the Yukon Geological Survey and available free of charge. Data are from recent mapping, regional compilations and thesis work.

The geological data used to create these maps can be downloaded at <https://data.geology.gov.yk.ca/Compilation/3>.

These maps are subject to periodic updates. This map was last updated in February 2022.

The Yukon Geological Survey welcomes any revisions or new geological information. Any questions or comments can be directed to geology@gov.yk.ca.