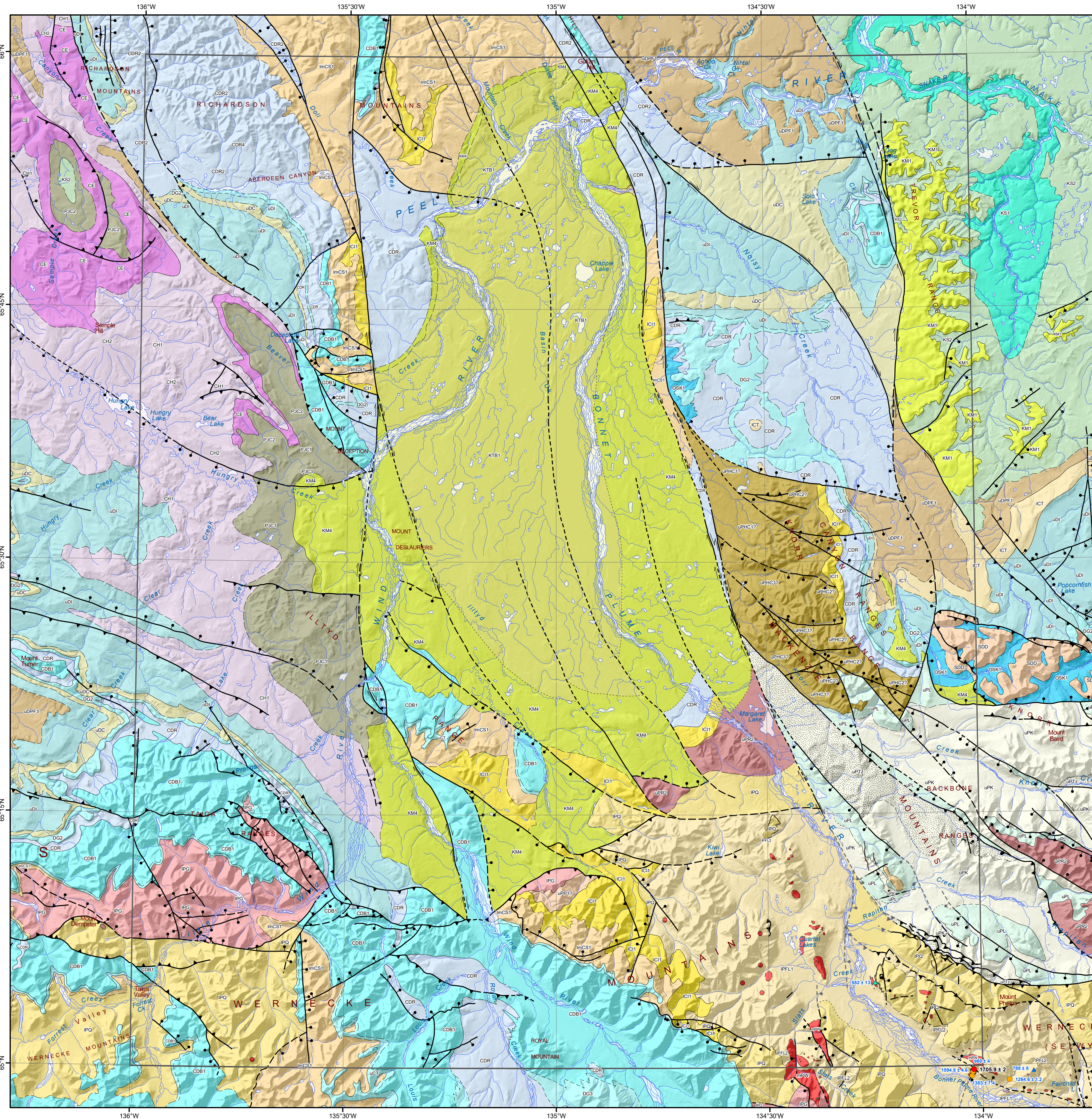


Note: legend contains geological information for the map extent and not the surrounding area.



MINERAL OCCURRENCE

- ★ Deposit
- ☆ Historic Deposit
- Significant exploration project

GEOCHRONOLOGY METHOD

- U/Pb, Zircon
- U/Pb, Other
- ▲ Ar/Ar
- ▲ K/Ar

UPPER CRETACEOUS

- KTB1: BONNET PLUME: sandstone, minor pebble conglomerate, grey fissile shale

LOWER CRETACEOUS

- KS2: ARCTIC RED: dark grey to brown or black shale and interbeds of siltstone
- KS1: MARTIN HOUSE: interbedded siltstone and silty shale
- KM4: BONNET PLUME: pebble to cobble, locally boulder conglomerate, lesser sandstone and shale
- KM1:TREVOR: interbedded sandstone and shale

LOWER AND MIDDLE PERMIAN

- PJC2: SADLERCHIT: shale, siltstone and limestone
- PJC1: JUNGLE CREEK: chert pebble conglomerate, sandstone and shale

UPPER CARBONIFEROUS

- CE: ETTRAIN: chert pebble conglomerate and glauconitic sandy carbonate

UPPER DEVONIAN TO PERMIAN

- uDPF1: FORD LAKE: pyritic shale, siltstone, lesser sandstone, conglomerate and silty limestone

LOWER AND UPPER CARBONIFEROUS

- CH2: HART RIVER: brown weathering sandstone, conglomerate and skeletal limestone
- CH1: HART RIVER: thinly laminated, cherty spiculite and spicule lime packstone

LOWER CARBONIFEROUS

- ICT: TUTTLE: chert granule to pebble conglomerate, conglomeratic sandstone

UPPER DEVONIAN

- uDI: IMPERIAL: dark grey shale and siltstone, lithic sandstone
- uDC: CANOL: dark grey to black non-calcareous shale

LOWER AND MIDDLE DEVONIAN

- DG2: OGLIVIE: dark grey and black, fine-grained limestone
- DG1: MICHELLE: black, calcareous shale, fossiliferous limestone

UPPER SILURIAN TO LOWER DEVONIAN

- SDD: DELORME: buff to orange weathering very fine grained dolomite

UPPER CAMBRIAN TO LOWER DEVONIAN

- CDB1: BOUVETTE: grey and buff-weathering dolomite and limestone

CAMBRIAN TO DEVONIAN

- CDR4: ROAD RIVER - MT HARE: black chert, graptolitic shale
- CDR2: ROAD RIVER - CRONIN: argillaceous limestone, black chert, graptolitic shale
- CDR1: ROAD RIVER - CRONIN: calcareous black shale and limestone

- CDR: ROAD RIVER - RICHARDSON: black graptolitic shale, limestone and minor chert (undivided)

UPPER ORDOVICIAN AND SILURIAN

- OSK1: MOUNT KINDLE: thick-bedded dolomite, minor chert

UPPER CAMBRIAN

- uCT: TAIGA: light grey limestone, massive dolomite, minor brown and green shale

LOWER AND MIDDLE CAMBRIAN

- ImCS1: SLATS CREEK: turbiditic, quartz sandstone with minor shale and siltstone shale

LOWER CAMBRIAN

- ICI1: ILTYD: fine crystalline, dark grey limestone

NEOPROTEROZOIC

- uPHC2?: PROFEIT: massive to thick-bedded, light grey weathering dolomite

- uPHC1?: TWITYA?: siltstone, shale interbedded with sandstone, granule to pebble conglomerate

- uPR2: SHEZAL: brown, orange brown, and green weathering massive diamictite

- LPF1: FRANKLIN: medium-grained gabbro dikes

- LPG: GUNBARREL: dark-green-weathering, fine to medium-grained diorite sills

- uPL: LITTLE DAL: light grey to buff and orange weathering fine-grained dolomite

- uPK: KATHERINE: mature, brown, greenish grey and white orthoquartzite

- uPT2: TSEZOTENE: grey, greenish grey or brown shale with interbeds of sandstone

- uPP1?: PINGUICULA: basal siliciclastic red laminates; brown and grey siltstone and shale

- mPW: WERNECKE BRECCIAS: hematitic and dolomitic metasomatic breccia

MESO TO NEOPROTEROZOIC

- mPH2: HART RIVER: diorite and gabbro sills and dikes

- MPB: BEAR RIVER SUITE: dark-green-weathering, fine to medium-grained diorite dikes

MESOPROTEROZOIC

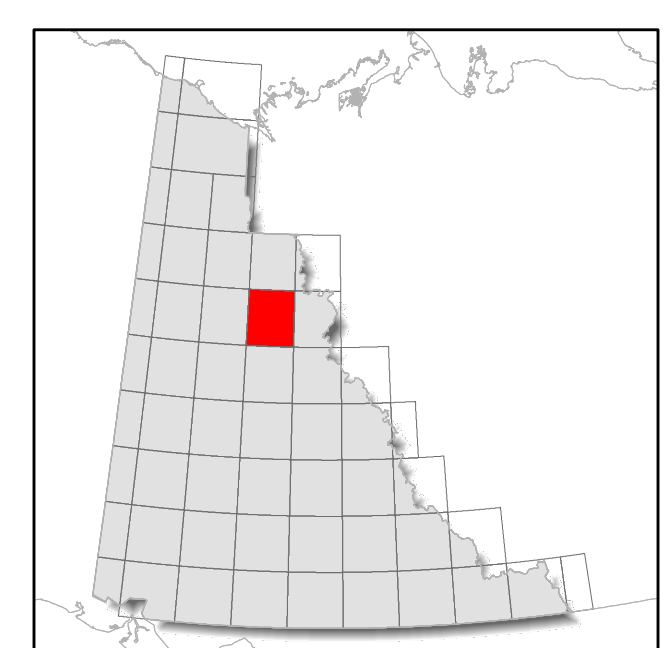
- IPG: GILLESPIE LAKE: dolomite and silty dolomite, locally stromatolitic

- IPQ: QUARTET: black weathering shale, finely laminated siltstone

- IPFL2: FAIRCHILD LAKE: siltstone, dolomitic siltstone, and dolomite

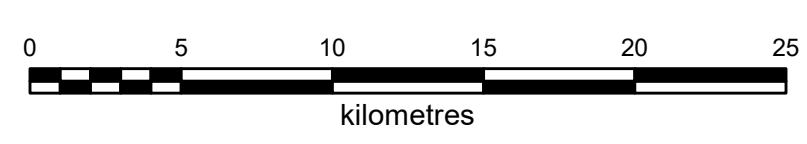
- IPFL1: FAIRCHILD LAKE: calcareous laminated siltstone, sandstone, carbonate

- EPBP: BONNET PLUME RIVER: diorite preserved as megacrysts within Wernecke Breccia



1:250 000-scale base data produced by CENTRE FOR TOPOGRAPHIC INFORMATION, NATURAL RESOURCES CANADA
 Copyright Her Majesty the Queen in Right of Canada
 30 metre shaded relief from Geomatics Yukon
www.geomaticsyukon.ca

**BEDROCK GEOLOGY
 WIND RIVER (106E)
 YUKON**



These maps contain the most current bedrock geology information in Yukon. All geological data are from the Yukon Geological Survey and available free of charge. Data are from recent mapping, regional compilations and thesis work.

The geological data used to create these maps can be downloaded at <https://data.geology.gov.yk.ca/Compilation/3>.

These maps are subject to periodic updates. This map was last updated in February 2022.

The Yukon Geological Survey welcomes any revisions or new geological information. Any questions or comments can be directed to geology@gov.yk.ca.