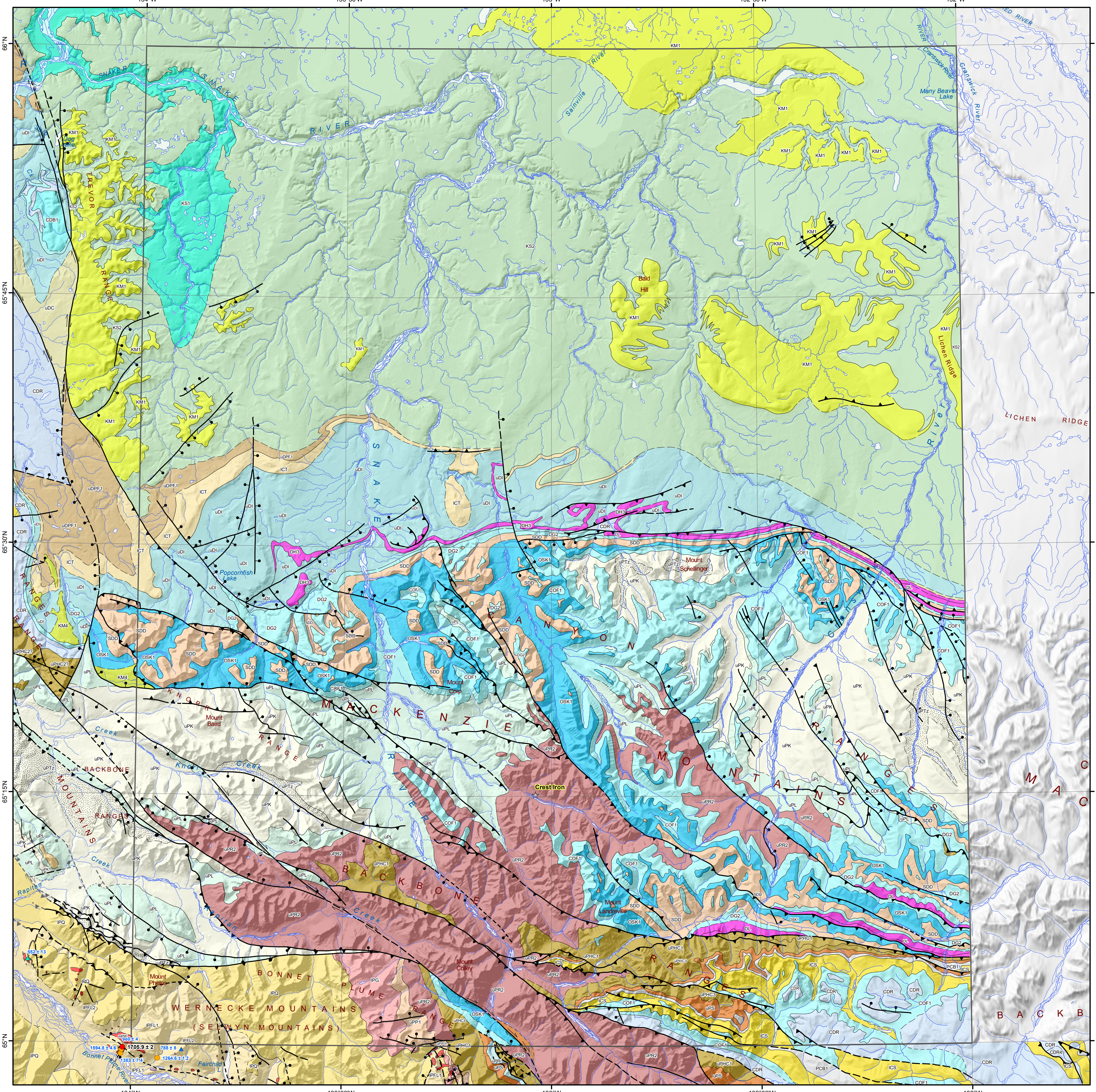


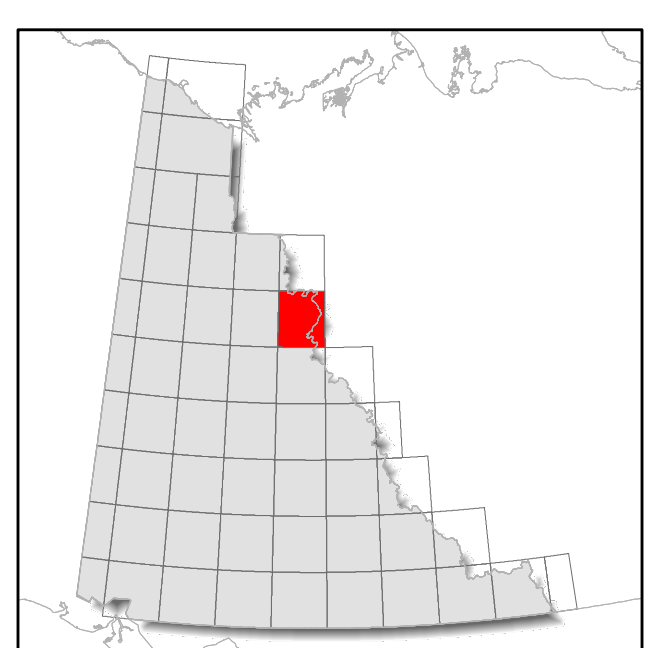
Note: legend contains geological information for the map extent and not the surrounding area.



MINERAL OCCURRENCE		GEOCHRONOLOGY METHOD	
★	Deposit	●	U/Pb, Zircon
☆	Historic Deposit	●	U/Pb, Other
■	Significant exploration project	▲	Ar/Ar
		▲	K/Ar

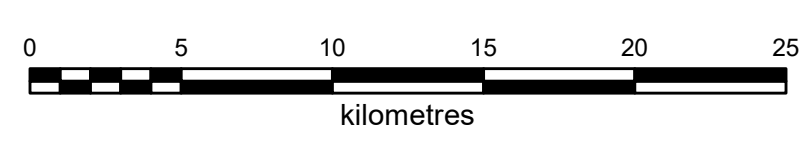
  

LOWER CRETACEOUS		LOWER CAMBRIAN	
KS2: ARCTIC RED: dark grey to brown or black shale and interbeds of siltstone		ICS: SEKWI: limestone, locally wavy bedded and nodular	
KS1: MARTIN HOUSE: interbedded siltstone and silty shale		NEOPROTEROZOIC TO LOWER CAMBRIAN	
KM4: BONNET PLUME: pebble to cobble, locally boulder conglomerate, lesser sandstone and shale		PCB1: BACKBONE: thick-bedded, medium to coarse-grained orthoquartzite	
KM1: TREVOR: interbedded sandstone and shale		NEOPROTEROZOIC	
		uPRI: RISKY: buff grey to buff yellow weathering dolostone	
		uPS: SHEEPBED: recessive, black weathering shale and siltstone	
		uPHC3: KEELE: silty and sandy dolostone, limestone, quartzite and conglomerate	
		uPHC2: PROFIT: massive to thick-bedded, light grey weathering dolostone	
		uPHC1: TWITYA: siltstone, shale interbedded with sandstone, granule to pebble conglomerate	
		uPR2: SHEZAL: brown, orange brown, and green weathering massive diamictite	
		LPF1: FRANKLIN: medium-grained gabbro dikes	
		LPGd: GUNBARREL: dark-green-weathering, fine to medium-grained diorite sills	
		uPL: LITTLE DAL: light grey to buff and orange weathering fine-grained dolostone	
		uPK: KATHERINE: mature, brown, greenish grey and white orthoquartzite	
		uPTz: TSEZOTENE: grey, greenish grey or brown shale with interbeds of sandstone	
		MESO TO NEOPROTEROZOIC	
		uPP1: PINGUICULA: basal siliciclastic red laminates; brown and grey siltstone and shale	
		mPW: WERNECKE BRECCIAS: hematitic and dolomitic metasomatic breccia	
		PALEOPROTEROZOIC	
		IPG: GILLESPIE LAKE: dolostone and silty dolostone, locally stromatolitic	
		IPQ: QUARTET: black weathering shale, finely laminated siltstone	
		IPFL2: FAIRCHILD LAKE: siltstone, dolomitic siltstone, and dolostone	
		IPFL1: FAIRCHILD LAKE: calcareous laminated siltstone, sandstone, carbonate	



1:250 000-scale base data produced by CENTRE FOR TOPOGRAPHIC INFORMATION, NATURAL RESOURCES CANADA  
 Copyright Her Majesty the Queen in Right of Canada  
 30 metre shaded relief from Geomatics Yukon  
[www.geomaticsyukon.ca](http://www.geomaticsyukon.ca)

**BEDROCK GEOLOGY  
 SNAKE RIVER (106F)  
 YUKON**



These maps contain the most current bedrock geology information in Yukon. All geological data are from the Yukon Geological Survey and available free of charge. Data are from recent mapping, regional compilations and thesis work.

The geological data used to create these maps can be downloaded at <https://data.geology.gov.yk.ca/Compilation/3>.

These maps are subject to periodic updates. This map was last updated in February 2022.

The Yukon Geological Survey welcomes any revisions or new geological information. Any questions or comments can be directed to [geology@gov.yk.ca](mailto:geology@gov.yk.ca).