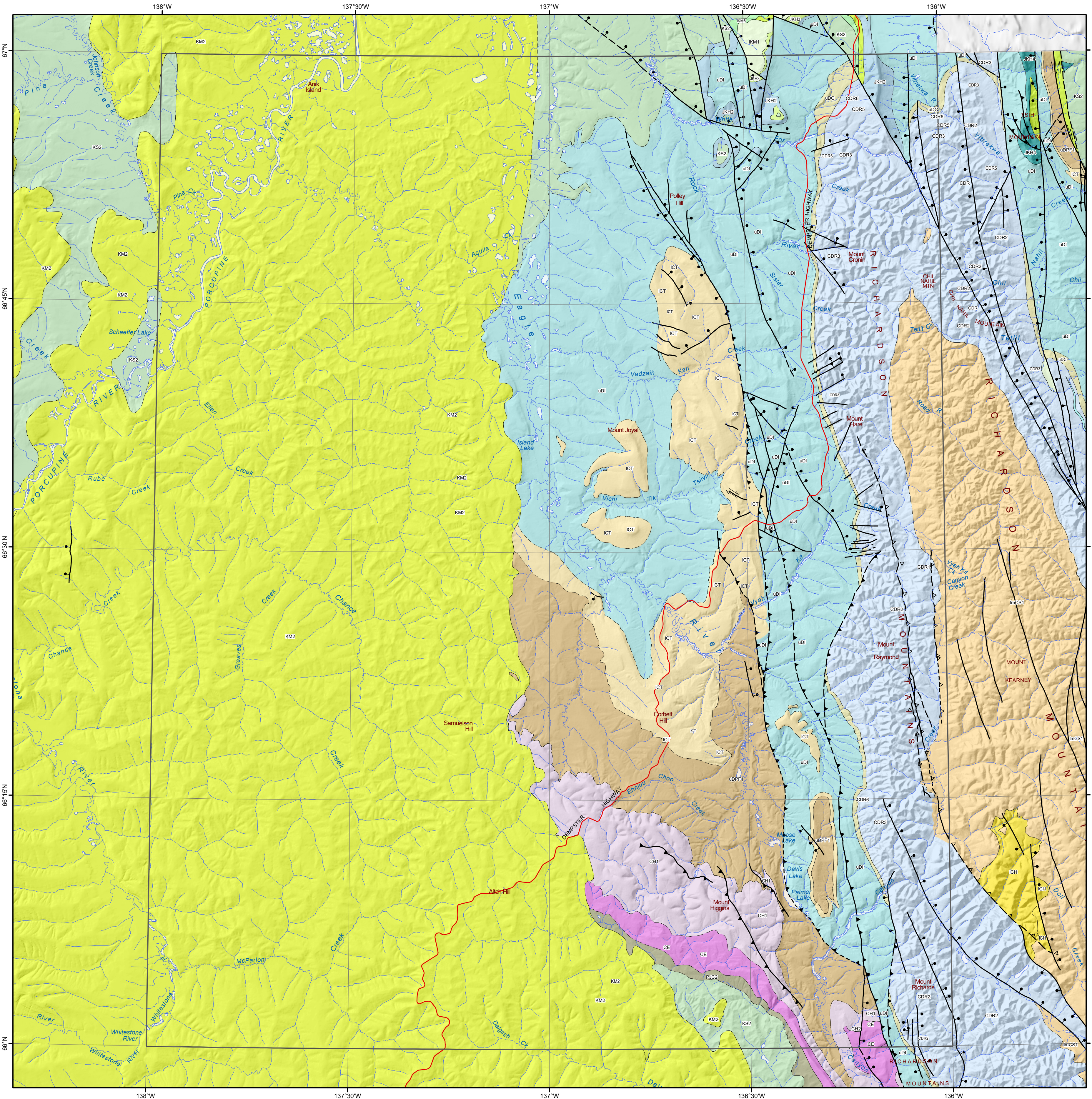


Note: legend contains geological information for the map extent and not the surrounding area.



MINERAL OCCURRENCE

- ★ Deposit
- ☆ Historic Deposit
- Significant exploration project

GEOCHRONOLOGY METHOD

- U/Pb, Zircon
- U/Pb, Other
- ▲ Ar/Ar
- ▲ K/Ar

LOWER CRETACEOUS

- KS2: ARCTIC RED: dark grey to brown or black shale and interbeds of siltstone
- KM2: EAGLE PLAIN: medium to dark grey shale and mudstone
- IKM6: RAT RIVER: interbedded units of sandstone and shale
- IKM4: MOUNT GOODENOUGH: sandstone, siltstone, shale and locally conglomerate
- IKM1: MARTIN CREEK: fine-grained quartz arenite

JURASSIC AND LOWER CRETACEOUS

- JKH3: HUSKY: dark grey shale, siltstone and ironstone
- JKH2: PORCUPINE RIVER: siltstone and light grey fine to very fine grained sandstone

LOWER AND MIDDLE PERMIAN

- PJC2: SADLEROCHIT: shale, siltstone and limestone

UPPER CARBONIFEROUS

- CE: ETTRAIN: fossiliferous limestone and glauconitic sandy carbonate

UPPER DEVONIAN TO PERMIAN

- uDPF1: FORD LAKE: pyritic shale, siltstone, lesser sandstone, conglomerate and silty limestone

LOWER AND UPPER CARBONIFEROUS

- CH2: HART RIVER: brown weathering sandstone, conglomerate and skeletal limestone
- CH1: HART RIVER: thinly laminated, cherty spiculate and spicule lime packstone

LOWER CARBONIFEROUS

- ICT: TUTTLE: chert granule to pebble conglomerate, conglomeratic sandstone

UPPER DEVONIAN

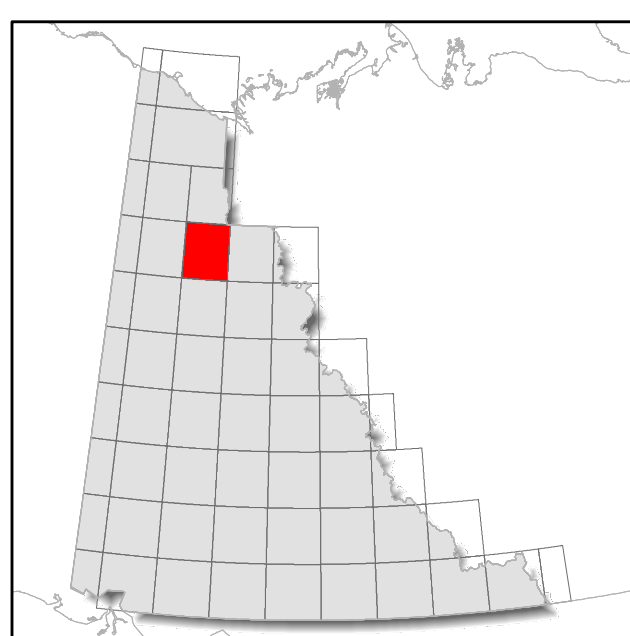
- uDI: IMPERIAL: dark grey shale and siltstone, lithic sandstone
- uDC: CANOL: dark grey to black non-calcareous shale

CAMBRIAN TO DEVONIAN

- CDR6: ROAD RIVER - VITREKWA: graptolitic, black shale and shaly limestone
- CDR5: ROAD RIVER - TETLIT: grey-green argillite, dolostone
- CDR4: ROAD RIVER - MT HARE: black chert, graptolitic shale
- CDR3: ROAD RIVER - MT HARE: sharpstone breccia
- CDR2: ROAD RIVER - CRONIN: argillaceous limestone, black chert, graptolitic shale
- CDR1: ROAD RIVER - CRONIN: calcareous black shale and limestone

LOWER AND MIDDLE CAMBRIAN

- ImCS1: SLATS CREEK: turbiditic, quartz sandstone with minor shale and siltstone

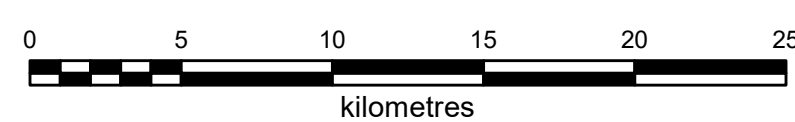


1:250 000-scale base data produced by CENTRE FOR TOPOGRAPHIC INFORMATION, NATURAL RESOURCES CANADA

Copyright Her Majesty the Queen in Right of Canada

30 metre shaded relief from Geomatics Yukon www.geomaticsyukon.ca

**BEDROCK GEOLOGY
EAGLE RIVER (116I)
YUKON**



These maps contain the most current bedrock geology information in Yukon. All geological data are from the Yukon Geological Survey and available free of charge. Data are from recent mapping, regional compilations and thesis work.

The geological data used to create these maps can be downloaded at <https://data.geology.gov.yk.ca/Compilation/3>.

These maps are subject to periodic updates. This map was last updated in February 2022.

The Yukon Geological Survey welcomes any revisions or new geological information. Any questions or comments can be directed to geology@gov.yk.ca.