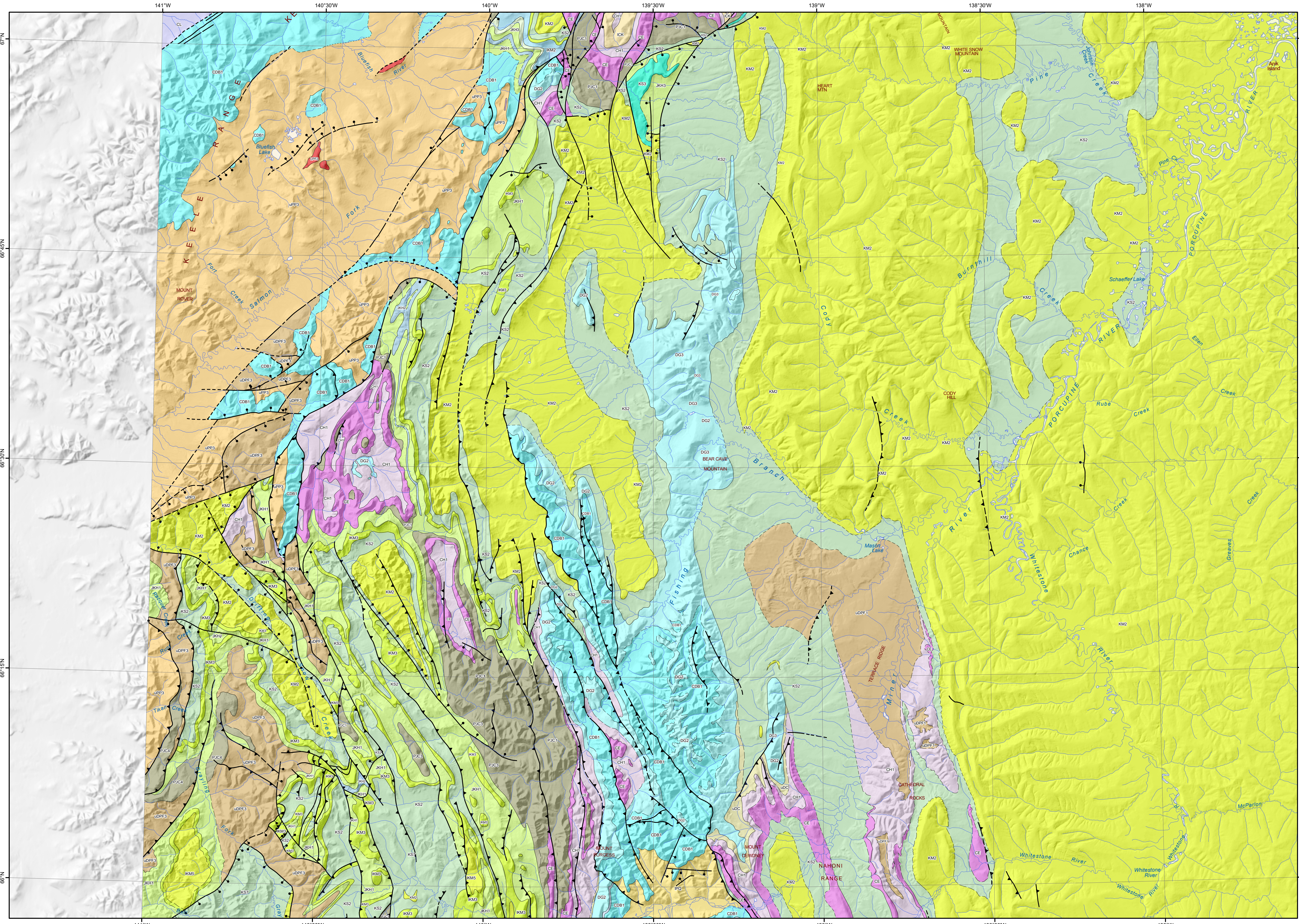
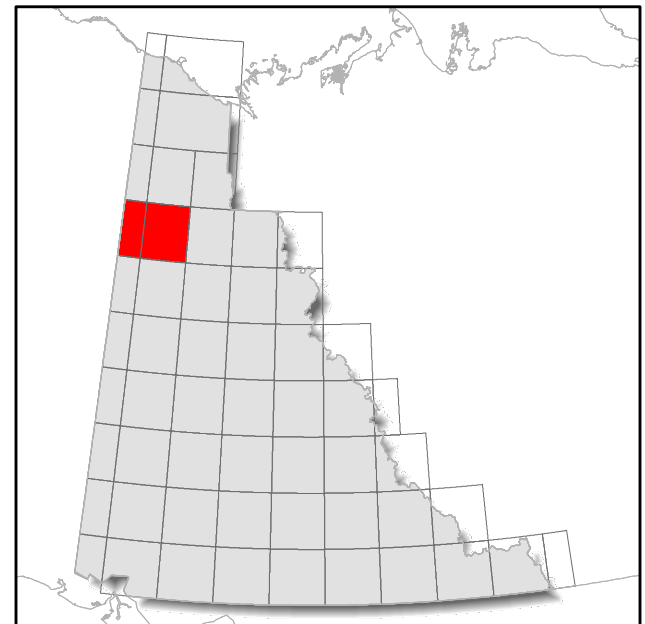


Note: legend contains geological information for the map extent and not the surrounding area.

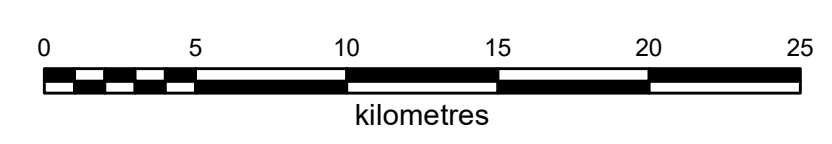


- | | |
|--|---|
| <p>MINERAL OCCURRENCE</p> <ul style="list-style-type: none"> ★ Deposit ☆ Historic Deposit ■ Significant exploration project | <p>GEOCHRONOLOGY METHOD</p> <ul style="list-style-type: none"> ● U/Pb, Zircon ● U/Pb, Other ▲ Ar/Ar ▲ K/Ar |
| <p>LOWER CRETACEOUS</p> <ul style="list-style-type: none"> KS7: KATHUL: shale, sandstone and pebbly sandstone, conglomerate KS3: SHARP MOUNTAIN: massive sandstone and pebble conglomerate KS2: ARCTIC RED: dark grey to brown or black shale and interbeds of siltstone KM2: EAGLE PLAIN: medium to dark grey shale and mudstone IKM5: BIEDERMAN: dark grey to black argillite, siltstone and sandstone IKM3: shale, siltstone, sandstone and coal IKM2: MCGUIRE: shale, thin beds of siltstone and argillaceous bioturbated sandstone IKM1: MARTIN CREEK: fine-grained quartz arenite | <p>CARBONIFEROUS</p> <ul style="list-style-type: none"> CL: LISBURNE: limestone, sandy to silty dolostone and shale CH2: HART RIVER: brown weathering sandstone, conglomerate and skeletal limestone CH1: HART RIVER: thinly laminated, cherty spiculate and spicule lime packstone |
| <p>JURASSIC AND LOWER CRETACEOUS</p> <ul style="list-style-type: none"> JKH3: HUSKY: dark grey shale, siltstone and ironstone JKH2: PORCUPINE RIVER: siltstone and light grey fine to very fine grained sandstone JKH1: KINGAK: dark grey siltstone and shale | <p>LOWER AND MIDDLE DEVONIAN</p> <ul style="list-style-type: none"> DG3: GOSSAGE: limestone and dolostone DG2: OGILVIE: dark grey and black, fine-grained limestone |
| <p>LOWER AND MIDDLE PERMIAN</p> <ul style="list-style-type: none"> PJ4: STEP: chert-pebble conglomerate and fossiliferous sandstone PJ3: TAHKANDIT: crystalline skeletal limestone, black chert, calcareous sandstone, conglomerate PJ1: JUNGLE CREEK: chert pebble conglomerate, sandstone and shale | <p>UPPER CAMBRIAN TO LOWER DEVONIAN</p> <ul style="list-style-type: none"> CDB1: BOUVETTE: grey and buff-weathering dolostone and limestone <p>CAMBRIAN TO DEVONIAN</p> <ul style="list-style-type: none"> CDR: ROAD RIVER - RICHARDSON: black graptolitic shale, limestone and minor chert (undivided) |
| <p>UPPER CARBONIFEROUS</p> <ul style="list-style-type: none"> CE: ETTRAIN: fossiliferous limestone and glauconitic sandy carbonate | <p>UPPER DEVONIAN TO PERMIAN</p> <ul style="list-style-type: none"> uDPF3: FORD LAKE: shale, siltstone, limestone, sandstone, conglomerate, chert undivided uDPF1: FORD LAKE: pyritic shale, siltstone, lesser sandstone, conglomerate and silty limestone |
| <p>NEOPROTEROZOIC</p> <ul style="list-style-type: none"> LPF2: FRANKLIN: basalt flows LPF1: FRANKLIN: medium-grained gabbro dikes | <p>MESO TO NEOPROTEROZOIC</p> <ul style="list-style-type: none"> uPP3: PINGUICULA: undivided red, green and grey slaty argillite, light grey quartzite, dolostone |
| <p>MESOPROTEROZOIC</p> <ul style="list-style-type: none"> mPH2: HART RIVER: diorite and gabbro sills and dikes | <p>PALEOPROTEROZOIC</p> <ul style="list-style-type: none"> IPQ: QUARTET: black weathering shale, finely laminated siltstone |



1:250 000-scale base data produced by CENTRE FOR TOPOGRAPHIC INFORMATION, NATURAL RESOURCES CANADA
 Copyright Her Majesty the Queen in Right of Canada
 30 metre shaded relief from Geomatics Yukon
www.geomaticsyukon.ca

BEDROCK GEOLOGY PORCUPINE RIVER (116J & 116K) YUKON



These maps contain the most current bedrock geology information in Yukon. All geological data are from the Yukon Geological Survey and available free of charge. Data are from recent mapping, regional compilations and thesis work.

The geological data used to create these maps can be downloaded at <https://data.geology.gov.yk.ca/Compilation/3>.

These maps are subject to periodic updates. This map was last updated in February 2022.

The Yukon Geological Survey welcomes any revisions or new geological information. Any questions or comments can be directed to geology@gov.yk.ca.