

- Bulletin 1** The Whitehorse Copper Belt: Mining Exploration and Geology 1967–1980 (105D) D. Tenney
- Bulletin 2** Geology and Genesis of the Mount Skukum Epithermal Gold-Silver Deposits, Southwestern Yukon Territory (105D) B.W.D. McDonald
- Bulletin 3** Shape and Composition of Lode and Placer Gold from the Klondike District, Yukon, Canada (115O, parts of 116B) J.B. Knight,  
J.K. Mortensen and S.R. Morison
- Bulletin 4** Sedimentology of Placer Gravels near Mt. Nansen, Central Yukon Territory (115I) W.P. LeBarge
- Bulletin 5** Natural Land Reclamation for Mineral Exploration Properties and Placer Mines in Yukon C. Mougeot
- Bulletin 6** Geology of the McQuesten River region, Northern McQuesten and Mayo Map Areas, Yukon Territory (115P/14-16, 105M/13-14) Donald C. Murphy
- Bulletin 7** Geology of the Mayo Map Area, Yukon Territory (105M) Charlie Roots
- Bulletin 8** A Transect Across Northern Stikinia: Geology of the Northern Whitehorse Map Area, Southern Yukon Territory (105D/13-16) Craig J.R. Hart
- Bulletin 9** Geology of the Upper Hart River Area, Eastern Ogilvie Mountains, Yukon Territory (116A/10, 11) Grant Abbott
- Bulletin 10** Geology and mineral occurrences of the Slats Creek, Fairchild Lake and “Dolores Creek” areas, Wernecke Mountains (106D/16, 106C/13, 106C/14), Yukon Territory Derek J. Thorkelson
- Bulletin 11** Quaternary geology and till geochemistry of the Anvil district (parts of 105K/2, 3, 5, 6 and 7), central Yukon Territory Jeffrey D. Bond
- Bulletin 12** Volcanic-associated massive sulphide (VMS) mineralization in the Yukon-Tanana Terrane and coeval strata of the North American Miogeocline J.A. Hunt
- Bulletin 13** Placer gold deposits of the Mayo area, central Yukon W.P. LeBarge, J.D. Bond  
and F.J. Hein
- Bulletin 14** Placer geology of the Stewart River (115N&O) and part of the Dawson (116B&C) map areas, west-central Yukon, Canada G.W. Lowey
- Bulletin 15** Bedrock geology compilation of the Anvil District (parts of 105K/2, 3, 5, 6, 7 and 11), central Yukon Territory L. Pigage

BULLETIN 15 Bedrock geology compilation of the Anvil District (parts of 105K/2, 3, 5, 6, 7 and 11), central Yukon Territory

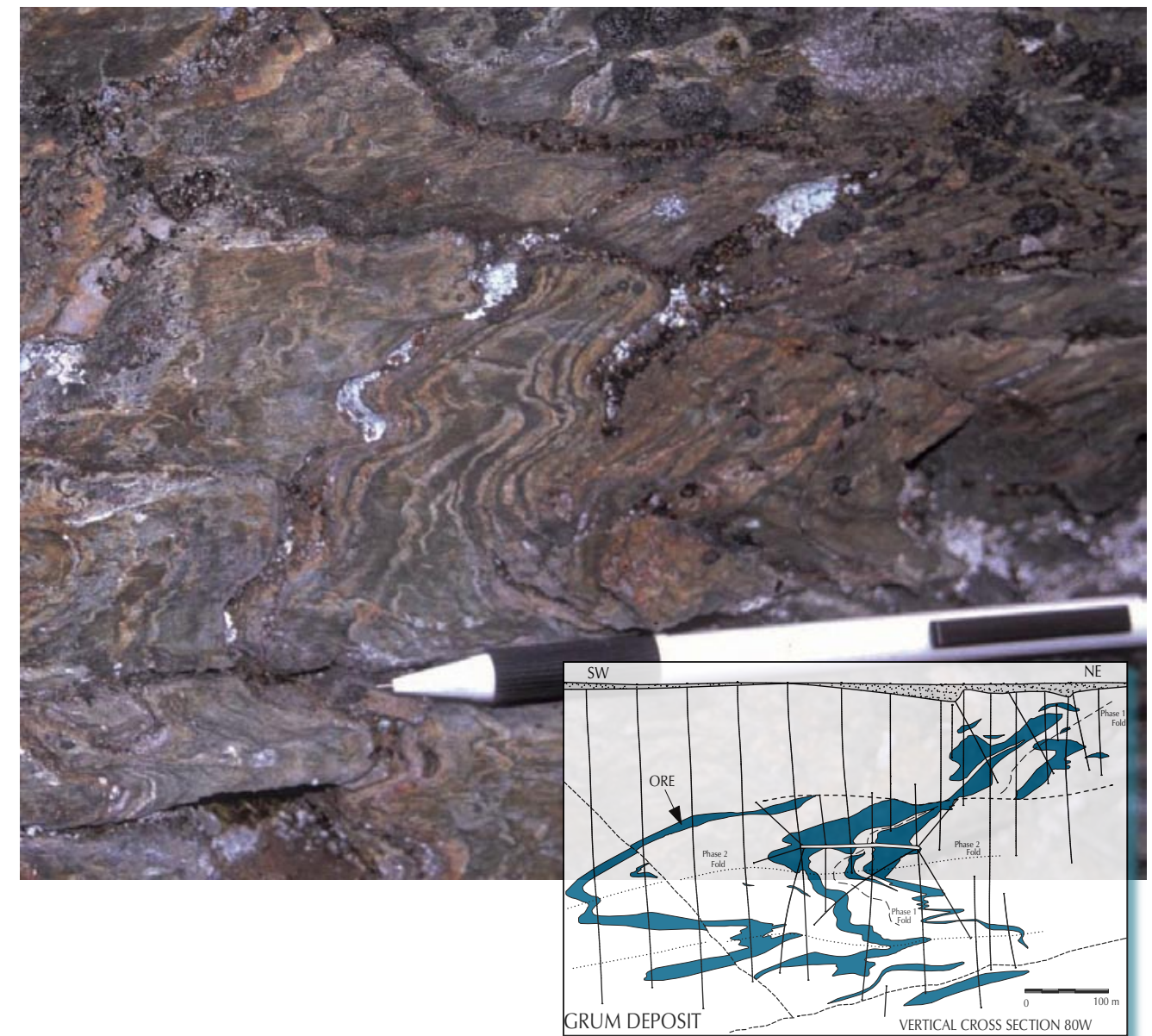
Lee Pigage

## BULLETIN 15

# Bedrock geology compilation of the Anvil District (parts of 105K/2, 3, 5, 6, 7 and 11), central Yukon Territory

Lee C. Pigage

with contributions from F. Cordey, J. K. Mortensen, M. J. Orchard and M. Villeneuve



Copies available from: Geoscience Information and Sales, c/o Whitehorse Mining Recorder, Energy, Mines and Resources, Box 2703 (K102), Whitehorse, Yukon, Y1A 2C6

Phone (867) 667-5200, Fax (867) 667-5150, [geosales@gov.yk.ca](mailto:geosales@gov.yk.ca)  
Visit our web site: [www.geology.gov.yk.ca](http://www.geology.gov.yk.ca)

<b>Bulletin 1</b>	The Whitehorse Copper Belt: Mining Exploration and Geology 1967–1980 (105D)	D. Tenney
<b>Bulletin 2</b>	Geology and Genesis of the Mount Skukum Epithermal Gold-Silver Deposits, Southwestern Yukon Territory (105D)	B.W.D. McDonald
<b>Bulletin 3</b>	Shape and Composition of Lode and Placer Gold from the Klondike District, Yukon, Canada (115O, parts of 116B)	J.B. Knight, J.K. Mortensen and S.R. Morison
<b>Bulletin 4</b>	Sedimentology of Placer Gravels near Mt. Nansen, Central Yukon Territory (115I)	W.P. LeBarge
<b>Bulletin 5</b>	Natural Land Reclamation for Mineral Exploration Properties and Placer Mines in Yukon	C. Mougeot
<b>Bulletin 6</b>	Geology of the McQuesten River region, Northern McQuesten and Mayo Map Areas, Yukon Territory (115P/14-16, 105M/13-14)	Donald C. Murphy
<b>Bulletin 7</b>	Geology of the Mayo Map Area, Yukon Territory (105M)	Charlie Roots
<b>Bulletin 8</b>	A Transect Across Northern Stikinia: Geology of the Northern Whitehorse Map Area, Southern Yukon Territory (105D/13-16)	Craig J.R. Hart
<b>Bulletin 9</b>	Geology of the Upper Hart River Area, Eastern Ogilvie Mountains, Yukon Territory (116A/10, 11)	Grant Abbott
<b>Bulletin 10</b>	Geology and mineral occurrences of the Slats Creek, Fairchild Lake and “Dolores Creek” areas, Wernecke Mountains (106D/16, 106C/13, 106C/14), Yukon Territory	Derek J. Thorkelson
<b>Bulletin 11</b>	Quaternary geology and till geochemistry of the Anvil district (parts of 105K/2, 3, 5, 6 and 7), central Yukon Territory	Jeffrey D. Bond
<b>Bulletin 12</b>	Volcanic-associated massive sulphide (VMS) mineralization in the Yukon-Tanana Terrane and coeval strata of the North American Miogeocline	J.A. Hunt
<b>Bulletin 13</b>	Placer gold deposits of the Mayo area, central Yukon	W.P. LeBarge, J.D. Bond and F.J. Hein
<b>Bulletin 14</b>	Placer geology of the Stewart River (115N&O) and part of the Dawson (116B&C) map areas, west-central Yukon, Canada	G.W. Lowey
<b>Bulletin 15</b>	Bedrock geology compilation of the Anvil District (parts of 105K/2, 3, 5, 6, 7 and 11), central Yukon Territory	L. Pigage

BULLETIN 15 Bedrock geology compilation of the Anvil District (parts of 105K/2, 3, 5, 6, 7 and 11), central Yukon Territory

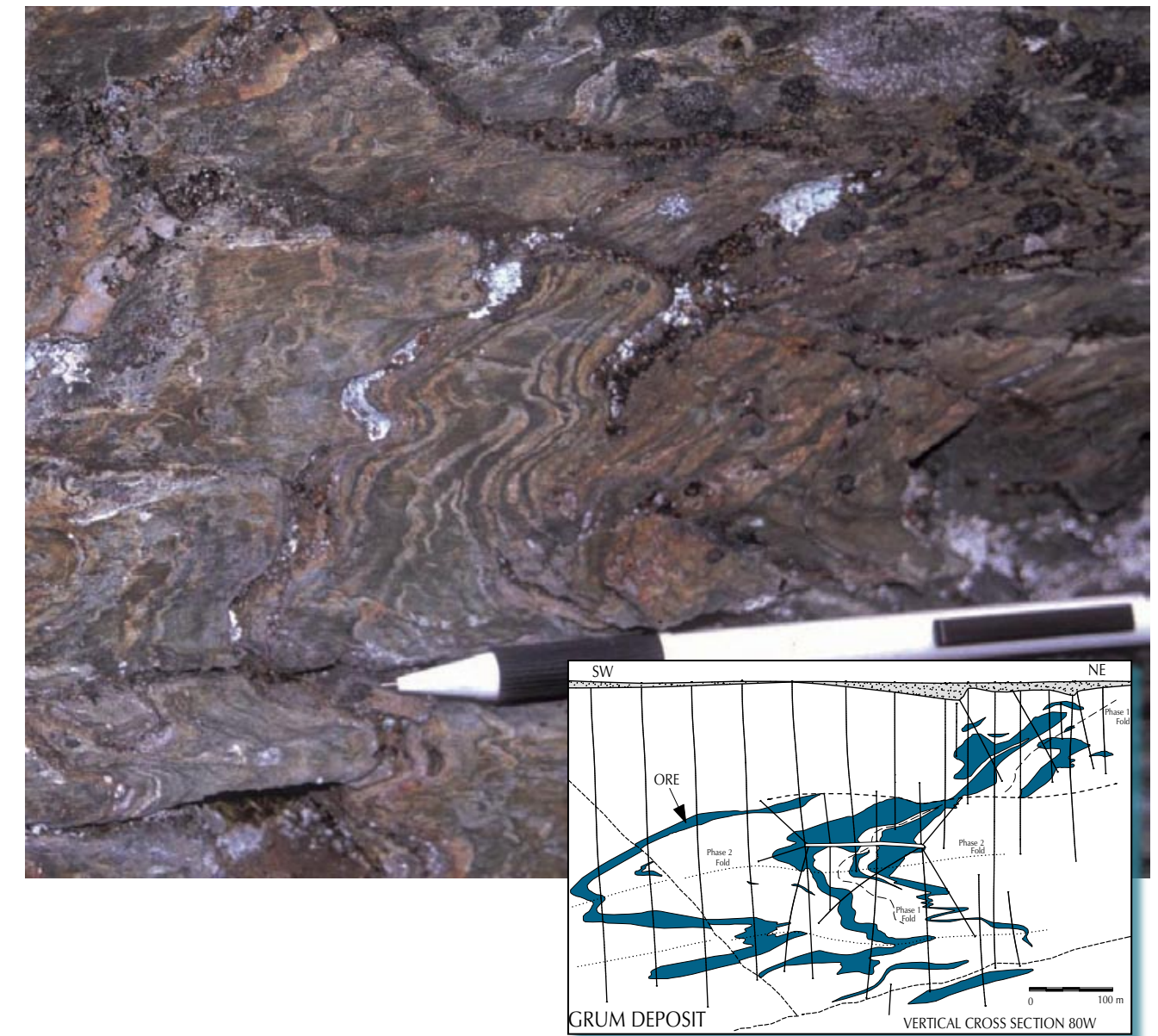
Lee Pigage

## BULLETIN 15

# Bedrock geology compilation of the Anvil District (parts of 105K/2, 3, 5, 6, 7 and 11), central Yukon Territory

Lee C. Pigage

with contributions from F. Cordey, J. K. Mortensen, M. J. Orchard and M. Villeneuve



Copies available from: Geoscience Information and Sales, c/o Whitehorse Mining Recorder, Energy, Mines and Resources, Box 2703 (K102), Whitehorse, Yukon, Y1A 2C6

Phone (867) 667-5200, Fax (867) 667-5150, geosales@gov.yk.ca  
Visit our web site: www.geology.gov.yk.ca

- Bulletin 1** The Whitehorse Copper Belt: Mining Exploration and Geology 1967–1980 (105D) D. Tenney
- Bulletin 2** Geology and Genesis of the Mount Skukum Epithermal Gold-Silver Deposits, Southwestern Yukon Territory (105D) B.W.D. McDonald
- Bulletin 3** Shape and Composition of Lode and Placer Gold from the Klondike District, Yukon, Canada (115O, parts of 116B) J.B. Knight,  
J.K. Mortensen and S.R. Morison
- Bulletin 4** Sedimentology of Placer Gravels near Mt. Nansen, Central Yukon Territory (115I) W.P. LeBarge
- Bulletin 5** Natural Land Reclamation for Mineral Exploration Properties and Placer Mines in Yukon C. Mougeot
- Bulletin 6** Geology of the McQuesten River region, Northern McQuesten and Mayo Map Areas, Yukon Territory (115P/14-16, 105M/13-14) Donald C. Murphy
- Bulletin 7** Geology of the Mayo Map Area, Yukon Territory (105M) Charlie Roots
- Bulletin 8** A Transect Across Northern Stikinia: Geology of the Northern Whitehorse Map Area, Southern Yukon Territory (105D/13-16) Craig J.R. Hart
- Bulletin 9** Geology of the Upper Hart River Area, Eastern Ogilvie Mountains, Yukon Territory (116A/10, 11) Grant Abbott
- Bulletin 10** Geology and mineral occurrences of the Slats Creek, Fairchild Lake and “Dolores Creek” areas, Wernecke Mountains (106D/16, 106C/13, 106C/14), Yukon Territory Derek J. Thorkelson
- Bulletin 11** Quaternary geology and till geochemistry of the Anvil district (parts of 105K/2, 3, 5, 6 and 7), central Yukon Territory Jeffrey D. Bond
- Bulletin 12** Volcanic-associated massive sulphide (VMS) mineralization in the Yukon-Tanana Terrane and coeval strata of the North American Miogeocline J.A. Hunt
- Bulletin 13** Placer gold deposits of the Mayo area, central Yukon W.P. LeBarge, J.D. Bond  
and F.J. Hein
- Bulletin 14** Placer geology of the Stewart River (115N&O) and part of the Dawson (116B&C) map areas, west-central Yukon, Canada G.W. Lowey
- Bulletin 15** Bedrock geology compilation of the Anvil District (parts of 105K/2, 3, 5, 6, 7 and 11), central Yukon Territory L. Pigage

BULLETIN 15 Bedrock geology compilation of the Anvil District (parts of 105K/2, 3, 5, 6, 7 and 11), central Yukon Territory

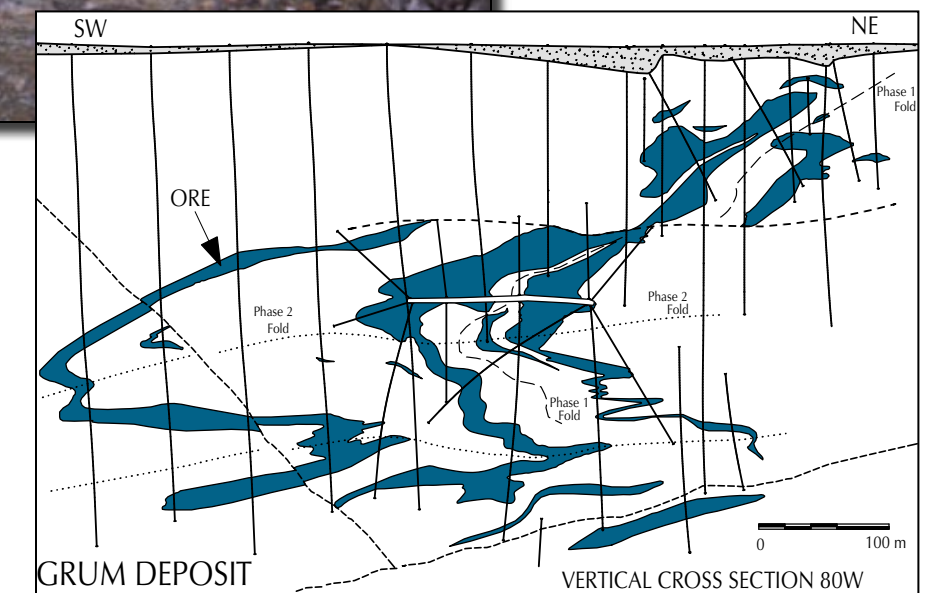
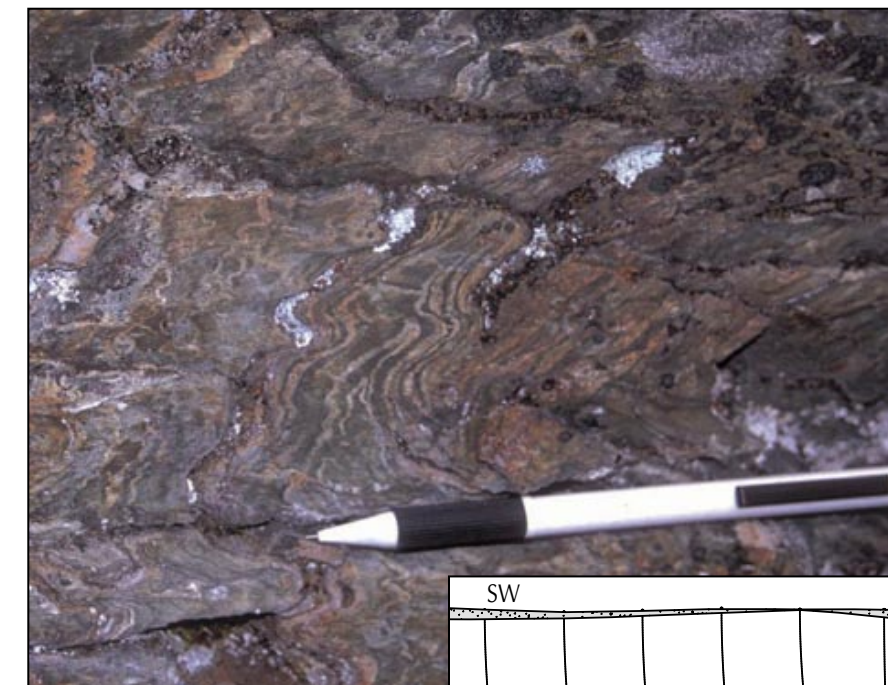
Lee Pigage

## BULLETIN 15

# Bedrock geology compilation of the Anvil District (parts of 105K/2, 3, 5, 6, 7 and 11), central Yukon Territory

Lee C. Pigage

with contributions from F. Cordey, J. K. Mortensen, M. J. Orchard and M. Villeneuve



Copies available from: Geoscience Information and Sales, c/o Whitehorse Mining Recorder, Energy, Mines and Resources, Box 2703 (K102), Whitehorse, Yukon, Y1A 2C6

Phone (867) 667-5200, Fax (867) 667-5150, [geosales@gov.yk.ca](mailto:geosales@gov.yk.ca)  
Visit our web site: [www.geology.gov.yk.ca](http://www.geology.gov.yk.ca)