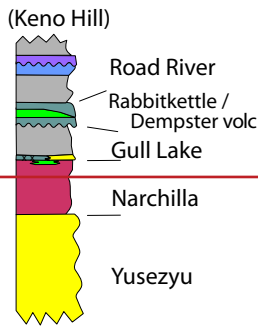


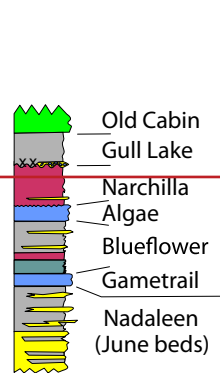
1. SW Ogilvie Mtns  
(Thompson and Roots, 1982)



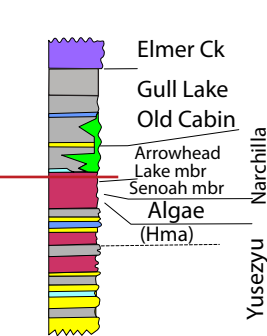
2. SE Ogilvie Mtns  
(Abbott, 1997)



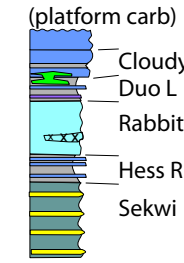
3. E Rackla area  
(Moynihan, 2014)



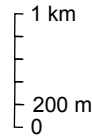
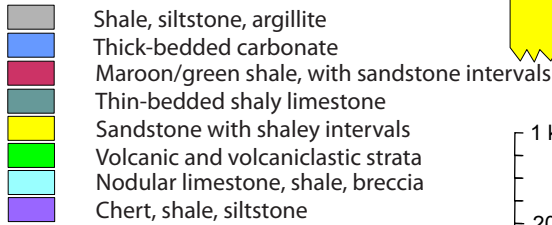
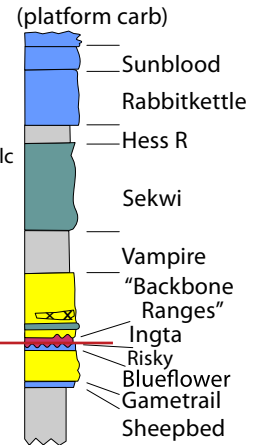
4. Nidderly Lake area  
(Cecile, 2000)



MCE Misty Ck  
embayment  
(Cecile, 1982)



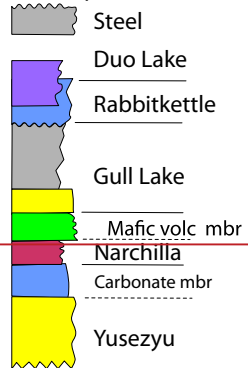
MM - Mackenzie Mtns  
(June L - Sekwi Br area;  
MacNaughton, 2011)



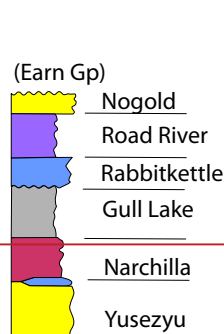
~ ~ ~ ~ ~ unconformity  
 ~ ~ ~ ~ ~ stratigraphy continues  
 (upward or downward)  
 ? ? ? unknown units below

o o o conglomerate (clast  
 lithology by colour)  
 x x intraformational  
 conglomerate

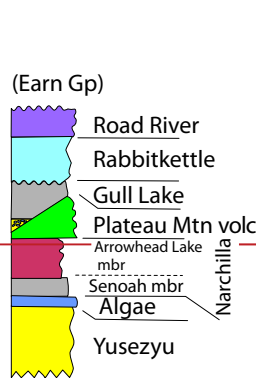
5. N McQuesten  
(Murphy, 1997)  
(Earn Gp)



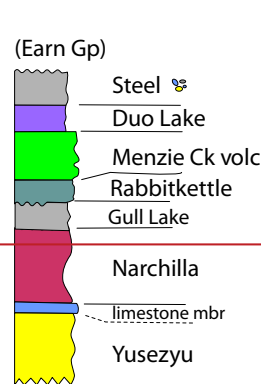
6. SE Mayo  
(Roots, 1997)



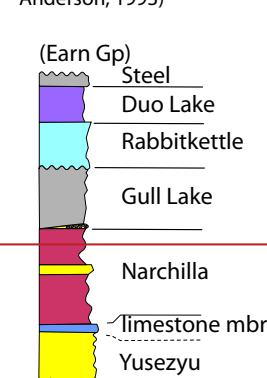
7. SE Lansing  
(Roots, 1998)



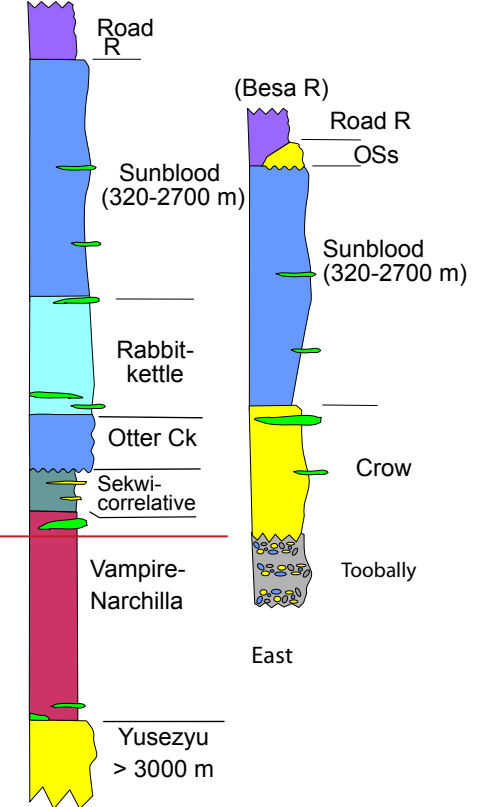
8. NE Tay River  
(Gordey, 2012)



9. SE Nahanni  
(Gordey and  
Anderson, 1993)



(Besa R)



West

10. Coal River map-area  
(this report)