

PROLOGUE

Over the past 10 years, the Yukon Geological Survey has been fortunate to have...

OBJECTIVES

The primary objective of this project is to provide a detailed geological map...

SCOPE

This project covers the area bounded by the 115° 15' W and 115° 45' W...

TERMINOLOGY

Some of the terms used in this report are defined as follows...

ACKNOWLEDGMENTS

The author wishes to thank the following individuals for their assistance...

REFERENCES

BEHRENS, G. 1984. A geologic map of the Yukon River valley...

RECOMMENDED CITATION

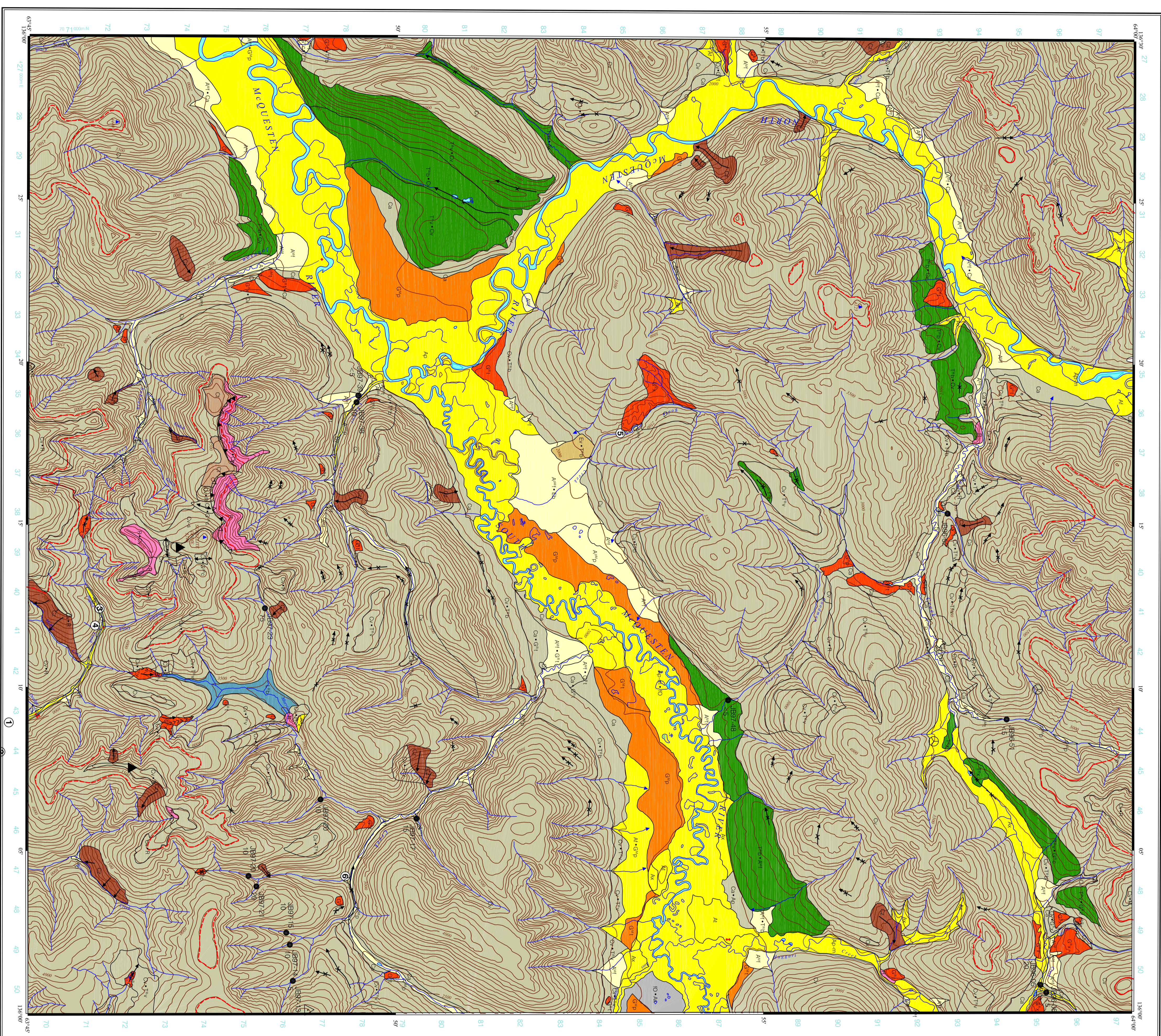
BOUD, J.D., 1986. Surficial geology of the Yukon River valley...

APPENDIX 1

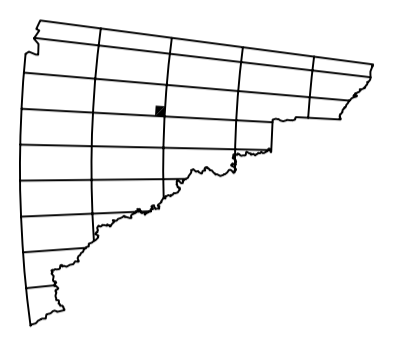
Section 1: 115° 15' W and 115° 45' W. Scale: 1:50,000.

APPENDIX 2

Section 2: 115° 15' W and 115° 45' W. Scale: 1:50,000.



SEATTLE CREEK YUKON TERRITORY SCALE 1:50 000



Yukon Geological Survey, Geological Survey of Canada, Ottawa, Ontario.

Table with 4 columns: Map No., Date, Scale, and Author. Rows include maps 115 P10, 115 P16, 115 P17, and 115 P18.

SYMBOLS

- Geological boundary (dashed line)
Metamorphic grade (shaded area)
Fault (solid line with ticks)
Quaternary (unshaded area)
Pleistocene (shaded area)
Miococene (shaded area)
... (various symbols and their descriptions)

TERMINOLOGY

- Map Movement: arrow with tail
Fault: line with ticks
... (various symbols and their descriptions)

REFERENCES

BEHRENS, G. 1984. A geologic map of the Yukon River valley...

RECOMMENDED CITATION

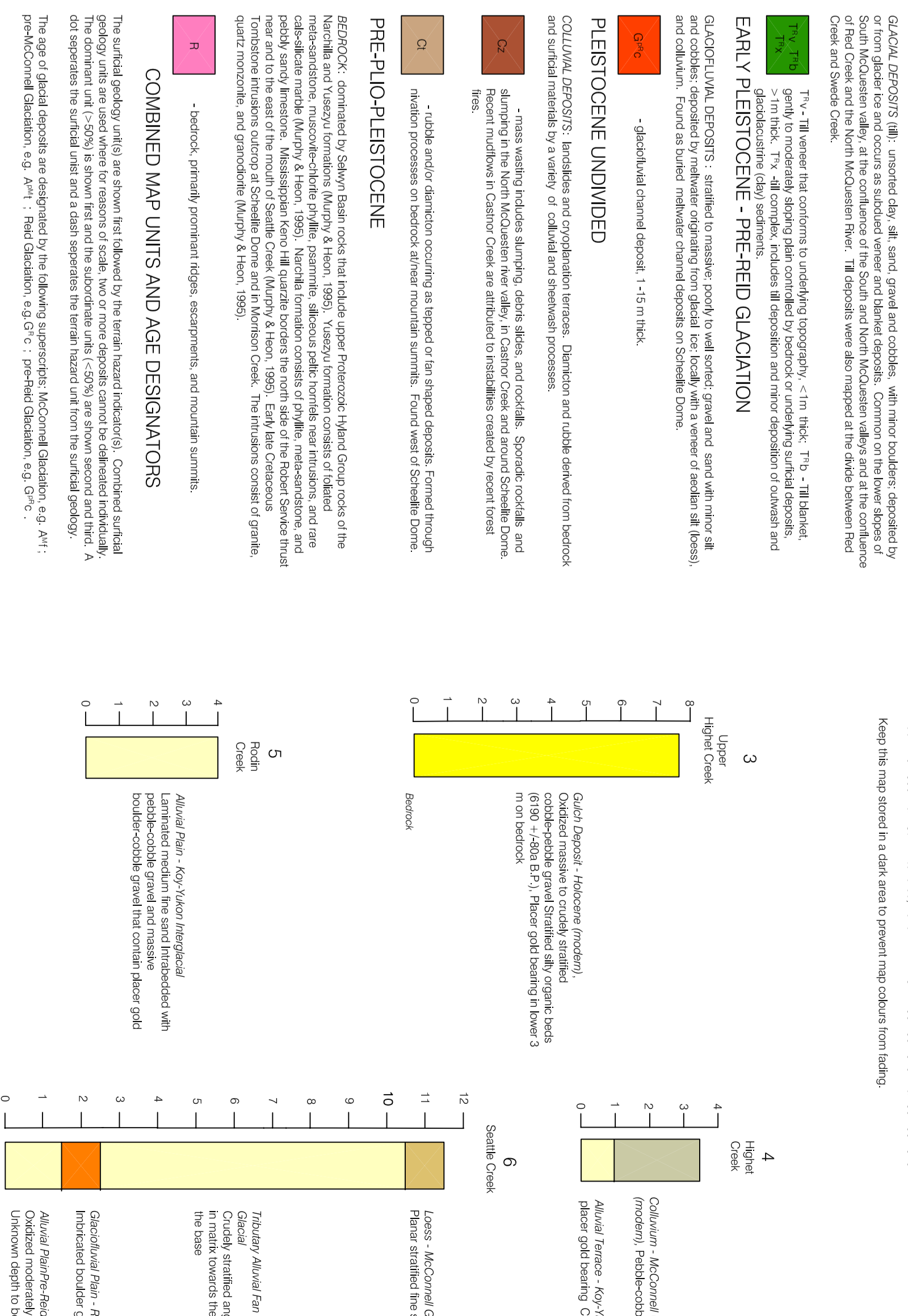
BOUD, J.D., 1986. Surficial geology of the Yukon River valley...

APPENDIX 1

Section 1: 115° 15' W and 115° 45' W. Scale: 1:50,000.

APPENDIX 2

Section 2: 115° 15' W and 115° 45' W. Scale: 1:50,000.



SURFICIAL GEOLOGY OF SEATTLE CREEK CENTRAL YUKON (115 P/16)

Geoscience Map 1986-2, Yukon Geological Survey, Whitehorse, Yukon.

Table with 4 columns: Map No., Date, Scale, and Author. Rows include maps 115 P10, 115 P16, 115 P17, and 115 P18.