



YUKON

Mineral Deposits Summary 2023

Published under the authority of the Minister of Energy, Mines and Resources, Government of Yukon
Printed in Whitehorse, Yukon, 2023.

Publié avec l'autorisation du Ministère de l'Énergie, des Mines et des Ressources du gouvernement du Yukon
Imprimé à Whitehorse (Yukon) en 2023.

ISSN 1499-8092

© Energy Mines, and Resources, Government of Yukon

This and other Yukon Geological Survey (YGS) publications are available from:

Yukon Geological Survey
Box 2703 (K-102)
Whitehorse, Yukon Y1A 2C6

Inquiries may also be directed to geology@yukon.ca.

YGS publications may be downloaded at <https://yukon.ca/en/science-and-natural-resources/geology>.

In referring to this publication, please use the following citation:

Yukon Geological Survey, 2023. Yukon Mineral Deposits Summary 2023. Yukon Geological Survey, 19 p.

Cover photo: Realgar and orpiment veins from Hecla Mining Company's recently acquired Osiris deposit in central Yukon.

Introduction

This publication is intended as a snapshot of the hard rock mineral resources of Yukon. It is up-to-date as of June 1, 2023.

The tables herein have been compiled from information derived from Yukon MINFILE – A database of mineral occurrences, and from various technical reports and information filed in SEDAR (system for electronic document analysis and retrieval).

This document does not include cut-off grades for resources and reserves. Numbers have been rounded for readability. Tonnages and grade are provided in metric measure – converted from imperial as required. Contained metals are calculated based on reported tonnages and grades. Calculated values are for all deposits listed for the project.

Deposits resources are identified as being compliant with either the minimum requirement for mineral resource and reserves as defined by the Canadian National Instrument for the standards of disclosure for mineral projects (NI 43-101) or the Australasian code for reporting of exploration results, mineral resources and ore reserves (JORC) standards. Deposits that are not compliant with these definitions are identified as historical estimates.

The reader is encouraged to refer to the original reference for detailed information. We accept no responsibility for any errors or omissions.

Conversion Factors

1 tonne = 1.10123 tons

1 g = 0.032150747 troy ounces

1 kg = 2.20462262 pounds

1 g/t = 0.029166679 troy ounces per ton

1 Moz Au = 31.1 tonnes Au = 31 100 kg Au

Summary of contents

This publication includes:

- one map and legend for projects having compliant resource calculations; one map and legend for projects having historical resources; an enlarged ports and powerlines map; and an updated bedrock geology map; and
- two tables of mineral deposits organized alphabetically: one table for compliant resource calculations and the other for historical.

Each table contains:

- name of project;
- deposit type;
- owner and optionee (if applicable);
- date resource was calculated;
- mineralized zone(s);
- Yukon MINFILE number;
- tonnage;
- grade/commodity; and
- contained metals

Units of measure abbreviations

t = tonnes

kt = thousand tonnes

Mt = million tonnes

g/t = grams per tonne

kg = kilograms

Mkg = million kilograms

Bkg = billion kilograms

koz = thousand ounces

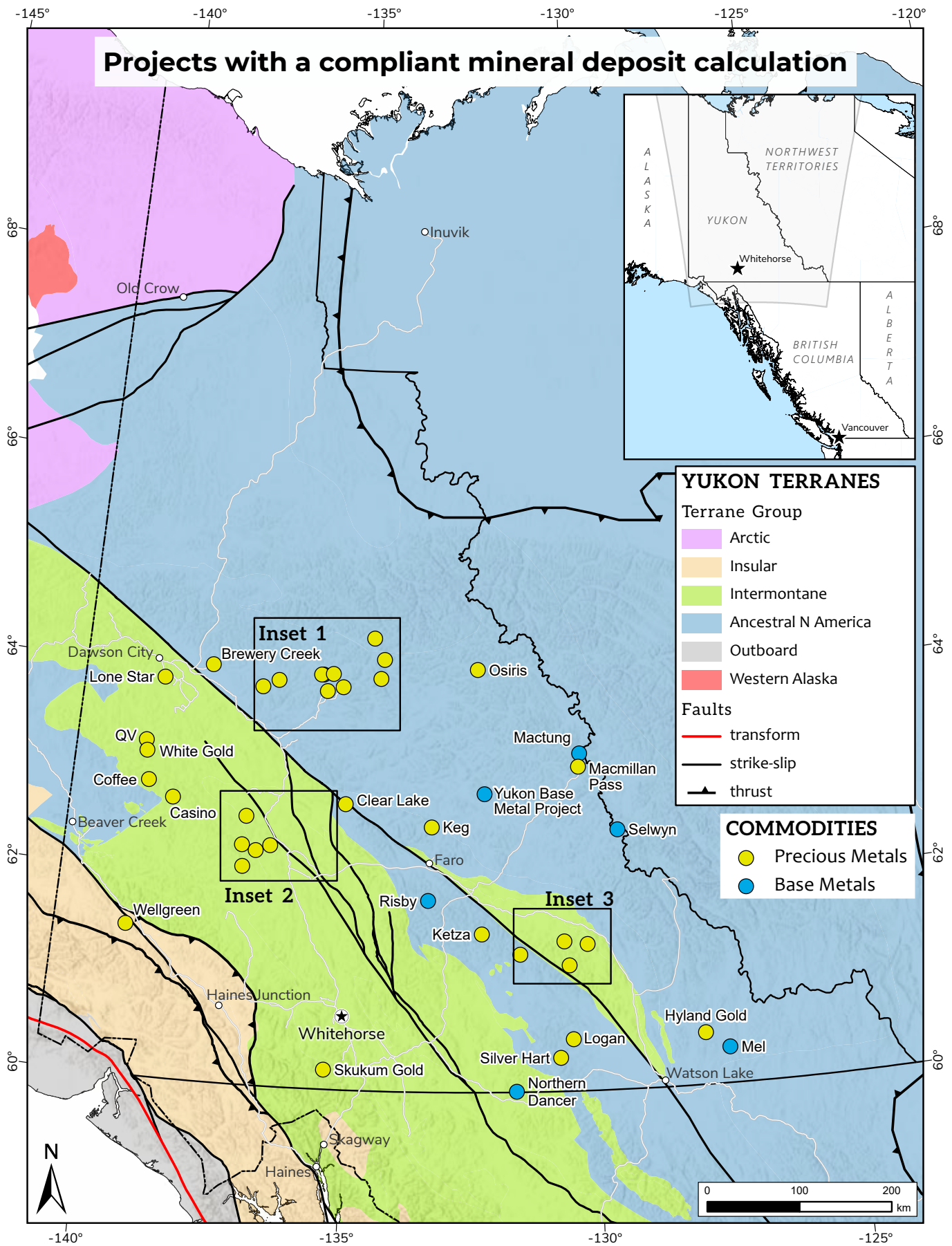
moz = million ounces

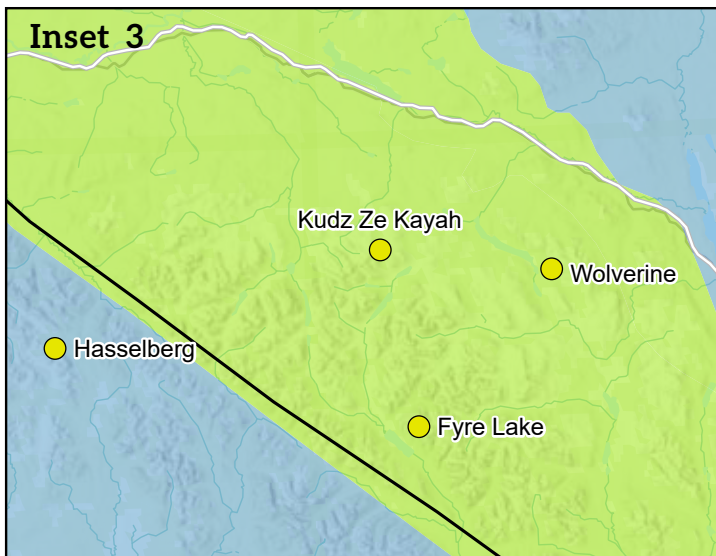
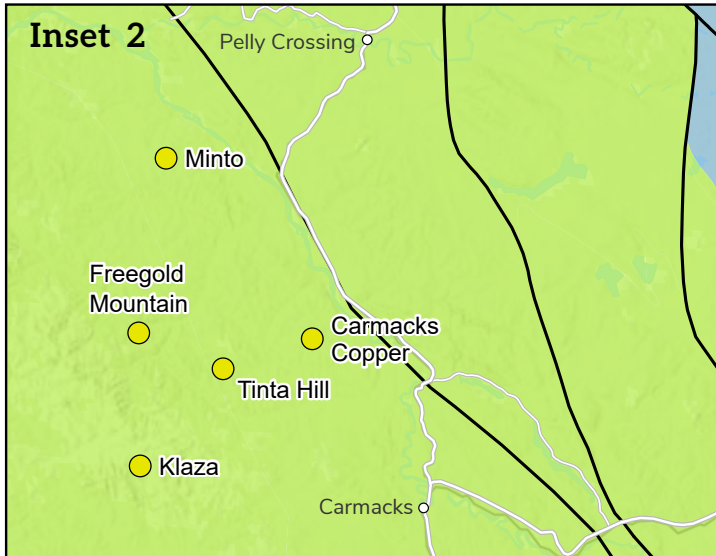
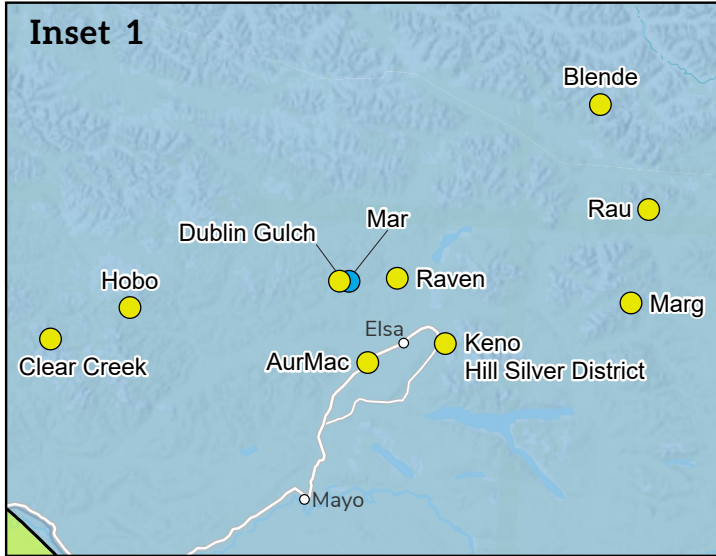
klb = thousand pounds

mlb = million pounds

blb = billion pounds

% = percent





PROPERTY	COMMODITIES
AurMac	Au
Blende	Ag, Pb, Zn
Brewery Creek	Au
Carmacks Copper	Au, Ag, Cu, Mo
Casino	Au, Ag, Cu, Mo
Clear Creek	Au
Clear Lake	Ag, Pb, Zn
Coffee	Au
Dublin Gulch	Au, Ag
Freegold Mountain	Au, Ag, Cu, Mo
Fyre Lake	Au, Ag, Cu
Hasselberg	Ag, Pb, Zn
Hobo	Au
Hyland Gold	Au, Ag
Keg	Ag, Cu, Pb, Zn, Sn
Keno Hill Silver District	Au, Ag, Pb, Zn
Ketza	Au
Klaza	Au, Ag, Pb, Zn
Kudz Ze Kayah	Au, Ag, Cu, Pb, Zn
Logan	Ag, Zn
Lone Star	Au
Macmillan Pass	Ag, Pb, Zn
Mactung	WO ₃
Mar	WO ₃
Marg	Au, Ag, Cu, Pb, Zn
Mel	Pb, Zn
Minto	Au, Ag, Cu
Northern Dancer	Mo, WO ₃
Osiris	Au
QV	Au
Rau	Au
Raven	Au
Risby	WO ₃
Selwyn	Pb, Zn
Silver Hart	Ag, Pb, Zn
Skukum Gold	Au, Ag
Tinta Hill	Au, Ag, Cu, Pb, Zn
Wellgreen	Au, Cu, Ni, Co, Pt, Pd
White Gold	Au
Wolverine	Au, Ag, Cu, Pb, Zn
Yukon Base Metal Project	Pb, Zn

Project name Deposit type Owner/optionee Date of reference	Mineralized zone(s) Yukon MINFILE number	Material (if specified) and Category	Tonnes	Grade	Contained metals	
					Metric	Imperial
Compliant resources calculations						
AurMac Intrusion-related Banyan Gold Corp. June 29, 2022	Airstrip 105M 088 Aurex Hill 105M 151 Powerline 105M 089	Inferred	207.0 Mt	0.6 g/t Au	123.5 t Au	4.0 moz Au
Blende Mississippi Valley-type Blende Silver Corp. May 25, 2018	East 106D 107 West (Main) 106D 064	Indicated	3.7 Mt	35.7 g/t Ag 1.95% Pb 1.98% Zn	130.4 t Ag 71.2 kt Pb 72.2 kt Zn	4.2 moz Ag 157.0 mlbs Pb 159.1 mlbs Zn
		Inferred	33.0 Mt	32.05 g/t Ag 1.88% Pb 2.01% Zn	1.1 kt Ag 0.6 Mt Pb 0.7 Mt Zn	34.0 moz Ag 1.4 blbs Pb 1.5 blbs Zn
Brewery Creek Intrusion-related Sabre Gold Mines Corp. January 13, 2020	Blue 105K 075 Bohemian 116B 200 Canadian 116B 194 Classic 116B 204 East Big Rock 116B 186 Golden 116B 198 Kokanee 116B 197 Lower Fosters 116B 195 Lucky 116B 199 Moosehead 116B 191 North Slope 116B 192 Pacific 116B 189 Schooner 116B 201 Sleeman 116B 203 Upper Fosters 116B 196 West Big Rock 116B 185	Oxide Indicated	21.1 Mt	1.13 g/t Au	23.8 t Au	0.8 moz Au
		Inferred	14.1 Mt	0.97 g/t Au	13.7 t Au	0.4 moz Au
		Sulphide Inferred	8.6 Mt	0.99 g/t Au	8.5 t Au	272.1 koz Au



Casino copper-gold-molybdenum-silver porphyry property in the Dawson Range.

Project name Deposit type Owner/optionee Date of reference	Mineralized zone(s) Yukon MINFILE number	Material (if specified) and Category	Tonnes	Grade	Contained metals	
					Metric	Imperial
Compliant resources calculations						
Carmacks Copper Porphyry Granite Creek Copper Ltd. January 19, 2023	Carmacks 115I 008	Oxide Measured and Indicated	15.7 Mt	0.37 g/t Au 3.91 g/t Ag 0.95% Cu 0.01% Mo	5.8 t Au 61.3 t Ag 148.5 kt Cu 1.6 kt Mo	185.1 koz Au 2.0 moz Ag 327.3 mlbs Cu 3.5 mlbs Mo
		Inferred	216.0 kt	0.09 g/t Au 2.44 g/t Ag 0.52% Cu 0.01% Mo	19.4 kg Au 0.5 t Ag 1.1 kt Cu 21.6 t Mo	0.6 koz Au 16.9 koz Ag 2.5 mlbs Cu 47.6 klbs Mo
		Sulphide Measured and Indicated	20.6 Mt	0.18 g/t Au 2.75 g/t Ag 0.71% Cu 0.02% Mo	3.7 t Au 56.6 t Ag 147.1 kt Cu 4.0 kt Mo	120.1 koz Au 1.8 moz Ag 324.2 mlbs Cu 8.8 mlbs Mo
		Inferred	2.6 Mt	0.14 g/t Au 2.33 g/t Ag 0.6% Cu 0.02% Mo	382.1 kg Au 6.2 t Ag 16.0 kt Cu 0.4 kt Mo	12.3 koz Au 197.7 koz Ag 35.2 mlbs Cu 1.0 mlbs Mo
Casino Porphyry Western Copper and Gold Corp. August 02, 2021	Casino 115J 028	Oxide Measured and Indicated	217.4 Mt	0.25 g/t Au 1.89 g/t Ag 0.03% Cu	54.6 t Au 0.4 kt Ag 72.7 kt Cu	1.8 moz Au 13.2 moz Ag 160.2 mlbs Cu
		Inferred	31.1 Mt	0.17 g/t Au 1.7 g/t Ag 0.03% Cu	5.3 t Au 52.9 t Ag 9.3 kt Cu	170.0 koz Au 1.7 moz Ag 20.6 mlbs Cu
		Sulphide and mixed Measured and Indicated	2173 Mt	0.18 g/t Au 1.45 g/t Ag 0.15% Cu 0.02% Mo	0.4 kt Au 3.1 kt Ag 3.3 Mt Cu 360.8 kt Mo	13.0 moz Au 101.1 moz Ag 7.3 blbs Cu 0.8 blbs Mo
		Inferred	1430 Mt	0.14 g/t Au 1.2 g/t Ag 0.1% Cu 0.01% Mo	200.2 t Au 1.7 kt Ag 1.4 Mt Cu 143.0 kt Mo	6.4 moz Au 55.2 moz Ag 3.2 blbs Cu 315.3 mlbs Mo
Clear Creek Intrusion-related Sitka Gold Corp. January 19, 2023	Blackjack 115P 075 Eiger 115P 074	Inferred	61.1 Mt	0.68 g/t Au	41.7 t Au	1.3 moz Au
Clear Lake Clastic-dominated massive sulphide Honey Badger Silver Inc. February 16, 2010	Clear Lake Deposit 105L 045	Inferred	7.8 Mt	22.0 g/t Ag 1.08% Pb 7.6% Zn	170.8 t Ag 83.9 kt Pb 0.6 Mt Zn	5.5 moz Ag 184.9 mlbs Pb 1.3 blbs Zn

Project name Deposit type Owner/optionee Date of reference	Mineralized zone(s) Yukon MINFILE number	Material (if specified) and Category	Tonnes	Grade	Contained metals	
					Metric	Imperial
Compliant resources calculations						
Coffee Orogenic Newmont Corporation January 06, 2016	Double Double 115J 130 Kona 115J 145 Kona North 115J 144 Latte 115J 135 Supremo 115J 132	Oxide Indicated	47.1 Mt	1.43 g/t Au	67.5 t Au	2.2 moz Au
		Inferred	25.0 Mt	1.06 g/t Au	26.6 t Au	0.9 moz Au
		Sulphide Indicated	138.0 kt	2.09 g/t Au	288.4 kg Au	9.3 koz Au
		Inferred	3.0 Mt	1.87 g/t Au	5.7 t Au	182.5 koz Au
		Upper transition Indicated	9.5 Mt	1.41 g/t Au	13.3 t Au	0.4 moz Au
		Inferred	10.6 Mt	1.19 g/t Au	12.7 t Au	0.4 moz Au
		Middle transition Indicated	4.6 Mt	1.45 g/t Au	6.7 t Au	217.0 koz Au
		Inferred	6.9 Mt	1.54 g/t Au	10.6 t Au	340.2 koz Au
		Lower transition Indicated	2.3 Mt	1.94 g/t Au	4.5 t Au	143.2 koz Au
		Inferred	6.8 Mt	1.94 g/t Au	13.2 t Au	0.4 moz Au
Dublin Gulch Intrusion-related Victoria Gold Corp. December 06, 2019	Eagle 105B 141 Olive 106D 127	Proven	32.0 Mt	0.73 g/t Au	23.3 t Au	0.8 moz Au
		Probable	123.0 Mt	0.64 g/t Au	79.0 t Au	2.5 moz Au
		Measured and Indicated	226.9 Mt	0.65 g/t Au 0.09 g/t Ag	146.6 t Au 20.0 t Ag	4.7 moz Au 0.6 moz Ag
		Inferred	28.8 Mt	0.61 g/t Au 0.43 g/t Ag	17.7 t Au 12.5 t Ag	0.6 moz Au 0.4 moz Ag
Freegold Mountain Porphyry Triumph Gold Corp. February 11, 2020	Nucleus 115I 107 Revenue 115I 042	Indicated	42.4 Mt	0.58 g/t Au 1.16 g/t Ag 0.08% Cu 0.01% Mo	24.5 t Au 49.1 t Ag 35.4 kt Cu 2.3 kt Mo	0.8 moz Au 1.6 moz Ag 78.0 mlbs Cu 5.0 mlbs Mo
		Inferred	36.9 Mt	0.52 g/t Au 2.03 g/t Ag 0.27% Cu 0.01% Mo	19.2 t Au 74.8 t Ag 100.7 kt Cu 2.7 kt Mo	0.6 moz Au 2.4 moz Ag 222.0 mlbs Cu 6.1 mlbs Mo
Fyre Lake Volcanogenic massive sulphide BMC Minerals Ltd. February 25, 2018	Kona 105G 034	Indicated	3.0 Mt	0.72 g/t Au 3.8 g/t Ag 1.44% Cu	2.2 t Au 11.4 t Ag 43.2 kt Cu	69.4 koz Au 366.5 koz Ag 95.2 mlbs Cu
		Inferred	7.5 Mt	0.59 g/t Au 3.96 g/t Ag 1.68% Cu	4.4 t Au 29.7 t Ag 126.3 kt Cu	141.8 koz Au 1.0 moz Ag 278.4 mlbs Cu
Hasselberg Volcanogenic massive sulphide Canamax Resources Ltd. January 23, 2017	Wolf 115I 060	Inferred	3.0 Mt	42.0 g/t Ag 1.4% Pb 4.9% Zn	126.0 t Ag 42.0 kt Pb 147.0 kt Zn	4.1 moz Ag 92.6 mlbs Pb 324.1 mlbs Zn
Hobo Intrusion-related AM Gold Inc. February 14, 2012	Red Mountain 115P 006	Inferred	127.2 Mt	0.48 g/t Au	61.1 t Au	2.0 moz Au

Project name Deposit type Owner/optionee Date of reference	Mineralized zone(s) Yukon MINFILE number	Material (if specified) and Category	Tonnes	Grade	Contained metals	
					Metric	Imperial
Compliant resources calculations						
Hyland Gold Intrusion-related Banyan Gold Corp. May 01, 2018	Main Zone 095D 011	Indicated	8.6 Mt	0.78 g/t Au 7.04 g/t Ag	6.7 t Au 60.8 t Ag	216.6 koz Au 2.0 moz Ag
		Inferred	10.8 Mt	0.77 g/t Au 5.32 g/t Ag	8.3 t Au 57.4 t Ag	267.0 koz Au 1.8 moz Ag
Keg Skarn Silver Range Resources Ltd. May 27, 2013	Keg Main Zone 105K 078	Inferred	39.0 Mt	30.0 g/t Ag 0.14% Cu 0.25% Pb 0.76% Zn 0.03% Sn	1.2 kt Ag 54.6 kt Cu 97.4 kt Pb 296.2 kt Zn 11.7 kt Sn	37.6 moz Ag 120.3 mlbs Cu 214.8 mlbs Pb 0.7 blbs Zn 25.8 mlbs Sn
Keno Hill Silver District Epithermal Hecla Mining Company April 01, 2021	Bellekeno 105M 082	Probable	1.4 Mt	0.31 g/t Au 804.26 g/t Ag 2.64% Pb 3.84% Zn	0.4 t Au 1.2 kt Ag 38.0 kt Pb 55.2 kt Zn	14.3 koz Au 37.2 moz Ag 83.7 mlbs Pb 121.6 mlbs Zn
	Bellekeno Surface Stockpile 105M 082	Indicated	3.8 Mt	0.32 g/t Au 596.18 g/t Ag 2.13% Pb 5.35% Zn	1.2 t Au 2.3 kt Ag 81.6 kt Pb 204.9 kt Zn	39.5 koz Au 73.4 moz Ag 180.0 mlbs Pb 0.5 blbs Zn
	Birmingham 105M 086					
	Flame & Moth 105M 087	Inferred	1.7 Mt	0.2 g/t Au 441.56 g/t Ag 1.4% Pb 4.49% Zn	351.3 kg Au 0.8 kt Ag 24.0 kt Pb 77.2 kt Zn	11.3 koz Au 24.4 moz Ag 53.0 mlbs Pb 170.3 mlbs Zn
	Lucky Queen 105M 085					
	Onek 105M 084					
Ketza Manto Under Care and Maintenance with Assessment and Abandoned Mines Yukon June 28, 2011	Gully 105F 019	Oxide Measured and Indicated	1.0 Mt	5.57 g/t Au	5.3 t Au	170.6 koz Au
	Knoll 105F 019	Inferred	199.2 kt	4.45 g/t Au	0.9 t Au	28.5 koz Au
	Lab 105F 019					
	Peel - Break 105F 019	Sulphide and mixed Measured and Indicated	1.4 Mt	5.39 g/t Au	7.7 t Au	247.7 koz Au
	Penguin 105F 019	Inferred	254.6 kt	4.75 g/t Au	1.2 t Au	38.9 koz Au
	QB 105F 019					
	Tarn 105F 019					
Klaza Epithermal Rockhaven Resources Ltd. July 10, 2020	Central BRX 115I 150	Indicated	4.5 Mt	4.79 g/t Au 98.09 g/t Ag 0.74% Pb 0.94% Zn	21.3 t Au 0.4 kt Ag 33.1 kt Pb 41.7 kt Zn	0.7 moz Au 14.1 moz Ag 73.0 mlbs Pb 92.0 mlbs Zn
	Central Klaza 115I 067	Inferred	5.7 Mt	2.77 g/t Au 75.77 g/t Ag 0.61% Pb 0.72% Zn	15.8 t Au 0.4 kt Ag 34.6 kt Pb 41.0 kt Zn	0.5 moz Au 13.9 moz Ag 76.4 mlbs Pb 90.3 mlbs Zn
Western BRX 115I 216						
	Western Klaza 115I 218					
Kudz Ze Kayah Volcanogenic massive sulphide BMC Minerals Ltd. November 30, 2020	ABM 105G 154 Krakatoa 105G 155	Indicated	18.3 Mt	1.4 g/t Au 147.91 g/t Ag 0.92% Cu 1.91% Pb 6.31% Zn	25.6 t Au 2.7 kt Ag 169.0 kt Cu 349.6 kt Pb 1.2 Mt Zn	0.8 moz Au 87.0 moz Ag 372.6 mlbs Cu 0.8 blbs Pb 2.5 blbs Zn
		Inferred	0.8 Mt	1.18 g/t Au 143.38 g/t Ag 1.04% Cu 1.65% Pb 7.22% Zn	0.9 t Au 114.7 t Ag 8.3 kt Cu 13.2 kt Pb 57.8 kt Zn	30.2 koz Au 3.7 moz Ag 18.3 mlbs Cu 29.1 mlbs Pb 127.4 mlbs Zn

Project name Deposit type Owner/optionee Date of reference	Mineralized zone(s) Yukon MINFILE number	Material (if specified) and Category	Tonnes	Grade	Contained metals	
					Metric	Imperial
Compliant resources calculations						
Logan Epithermal Almadex Minerals Ltd. January 17, 2023	Main 105B 099	Indicated	2.6 Mt	23.1 g/t Ag 5.1% Zn	60.5 t Ag 133.6 kt Zn	1.9 moz Ag 294.6 mlbs Zn
		Inferred	16.9 Mt	18.2 g/t Ag 4.3% Zn	308.1 t Ag 0.7 Mt Zn	9.9 moz Ag 1.6 blbs Zn
Lone Star Orogenic Klondike Gold Corp. November 10, 2022	Lone Star 115O 072 Stander 115O 180	Indicated	21.6 Mt	0.68 g/t Au	14.6 t Au	0.5 moz Au
		Inferred	6.5 Mt	0.54 g/t Au	3.5 t Au	112.0 koz Au
Macmillan Pass Clastic-dominated massive sulphide Fireweed Metals January 10, 2018	Jason Main 105O 019 Jason South 105O 072 Tom East 105O 070 Tom Southeast 105O 063 Tom West 105O 001	Indicated	11.2 Mt	21.36 g/t Ag 2.48% Pb 6.59% Zn	239.5 t Ag 278.2 kt Pb 0.7 Mt Zn	7.7 moz Ag 0.6 blbs Pb 1.6 blbs Zn
		Inferred	39.5 Mt	38.16 g/t Ag 3.14% Pb 5.84% Zn	1.5 kt Ag 1.2 Mt Pb 2.3 Mt Zn	48.4 moz Ag 2.7 blbs Pb 5.1 blbs Zn
Mactung Skarn Fireweed Metals April 03, 2009	Mactung 105O 002	Probable	10.8 Mt	1.19% WO ₃	128.1 kt WO ₃	282.4 mlbs WO ₃
		Indicated	33.0 Mt	0.88% WO ₃	290.7 kt WO ₃	0.6 blbs WO ₃
		Inferred	11.9 Mt	0.78% WO ₃	92.5 kt WO ₃	203.9 mlbs WO ₃
Mar Skarn Victoria Gold Corp. December 08, 2008	Mar-Tungsten 106D 027	Indicated	12.7 Mt	0.31% WO ₃	39.4 kt WO ₃	86.8 mlbs WO ₃
		Inferred	1.3 Mt	1.3% WO ₃	16.9 kt WO ₃	37.3 mlbs WO ₃
Marg Volcanogenic massive sulphide Sabre Gold Mines Corp. October 06, 2015	Marg 106D 009	Indicated	3.7 Mt	0.76 g/t Au 48.0 g/t Ag 1.5% Cu 2.0% Pb 3.8% Zn	2.8 t Au 177.6 t Ag 55.5 kt Cu 74.0 kt Pb 140.6 kt Zn	90.4 koz Au 5.7 moz Ag 122.4 mlbs Cu 163.1 mlbs Pb 310.0 mlbs Zn
		Inferred	6.1 Mt	0.74 g/t Au 44.0 g/t Ag 1.2% Cu 1.7% Pb 3.4% Zn	4.5 t Au 268.4 t Ag 73.2 kt Cu 103.7 kt Pb 207.4 kt Zn	145.1 koz Au 8.6 moz Ag 161.4 mlbs Cu 228.6 mlbs Pb 0.5 blbs Zn
Mel Mississippi Valley-type Silver Range Resources Ltd. March 20, 2017	Main Zone 095D 005	Inferred	5.3 Mt	1.86% Pb 6.51% Zn	98.2 kt Pb 343.7 kt Zn	216.5 mlbs Pb 0.8 blbs Zn
Minto Porphyry Under Care and Maintenance with Assessment and Abandoned Mines Yukon May 07, 2021	118 115I 166 Copper Keel/Ridgetop 115I 168 Minto East 115I 164 Minto North 115I 022 Ridgetop 115I 168	Indicated	11.1 Mt	0.53 g/t Au 4.73 g/t Ag 1.46% Cu	5.9 t Au 52.4 t Ag 162.1 kt Cu	188.8 koz Au 1.7 moz Ag 357.3 mlbs Cu
		Inferred	13.0 Mt	0.49 g/t Au 4.56 g/t Ag 1.29% Cu	6.4 t Au 59.3 t Ag 168.2 kt Cu	206.7 koz Au 1.9 moz Ag 370.7 mlbs Cu
Northern Dancer Porphyry Largo Resources Ltd. March 28, 2011	Logtung 105B 039	Measured and Indicated	223.4 Mt	0.03% Mo 0.1% WO ₃	67.0 kt Mo 226.5 kt WO ₃	147.8 mlbs Mo 0.5 blbs WO ₃
		Inferred	201.2 Mt	0.02% Mo 0.09% WO ₃	40.2 kt Mo 181.1 kt WO ₃	88.7 mlbs Mo 399.2 mlbs WO ₃

Project name Deposit type Owner/optionee Date of reference	Mineralized zone(s) Yukon MINFILE number	Material (if specified) and Category	Tonnes	Grade	Contained metals	
					Metric	Imperial
Compliant resources calculations						
Osiris Carlin-type Atac Resources Ltd. May 10, 2022	Conrad 105D 097 Ibis 106C 064 Osiris 106C 045 Sunrise 106C 129	Indicated	5.5 Mt	4.12 g/t Au	22.8 t Au	0.7 moz Au
		Inferred	9.4 Mt	3.47 g/t Au	32.5 t Au	1.0 moz Au
QV Orogenic White Gold Corp. November 15, 2021	VG 105J 043	Inferred	5.3 Mt	1.62 g/t Au	8.5 t Au	274.2 koz Au
Rau Carlin-type Atac Resources Ltd. February 27, 2020	Tiger 105B 009	Oxide Indicated	2.1 Mt	3.69 g/t Au	7.9 t Au	254.5 koz Au
		Inferred	61.0 kt	2.27 g/t Au	138.2 kg Au	4.4 koz Au
		Sulphide Measured and Indicated	2.4 Mt	2.74 g/t Au	6.5 t Au	209.8 koz Au
		Inferred	104.0 kt	2.27 g/t Au	236.1 kg Au	7.6 koz Au
Raven Intrusion-related Victoria Gold Corp. October 26, 2022	Raven 106D 018	Inferred	20.0 Mt	1.67 g/t Au	33.3 t Au	1.1 moz Au
Risby Skarn 18526 Yukon Inc. May 29, 2009	Risby 105F 034	Inferred	8.5 Mt	0.47% WO ₃	40.6 kt WO ₃	89.4 mlbs WO ₃
Selwyn Clastic-dominated massive sulphide Selwyn Chihong Mining Ltd. May 15, 2012	ANNIV Central 105I 037 ANNIV East 105I 074 ANNIV West 105I 075 Brodel 105I 066 Don 105I 068 Don East 105I 068 HC 105I 067 HC West 105I 072 HP 105I 032 OP 105I 037 OP West 105I 076 Pelly North 105I 069 XY Central 105I 012 XY Nose XY West 105I 071	Indicated	180.7 Mt	1.83% Pb 5.25% Zn	3.3 Mt Pb 9.5 Mt Zn	7.3 blbs Pb 20.9 blbs Zn
		Inferred	228.8 Mt	1.38% Pb 4.47% Zn	3.2 Mt Pb 10.2 Mt Zn	6.9 blbs Pb 22.6 blbs Zn

Project name Deposit type Owner/optionee Date of reference	Mineralized zone(s) Yukon MINFILE number	Material (if specified) and Category	Tonnes	Grade	Contained metals	
					Metric	Imperial
Compliant resources calculations						
Silver Hart Manto CMC Metals Ltd. January 15, 2021	KL 105B 168 M 105B 170 S 105B 171 TM 105B 021	Inferred	346.7 kt	333.82 g/t Ag 1.82% Pb 4.52% Zn	115.7 t Ag 6.3 kt Pb 15.7 kt Zn	3.7 moz Ag 13.9 mlbs Pb 34.6 mlbs Zn
Skukum Gold Epithermal Tincorp Metals Inc. October 28, 2022	Goddell Gully 105D 025 Mount Skukum 105D 158 Skukum Creek 105D 022	Indicated	1.6 Mt	6.79 g/t Au 114.56 g/t Ag	10.8 t Au 182.6 t Ag	347.8 koz Au 5.9 moz Ag
		Inferred	3.0 Mt	4.64 g/t Au 58.1 g/t Ag	14.0 t Au 175.2 t Ag	0.4 moz Au 5.6 moz Ag
Tinta Hill Epithermal Triumph Gold Corp. February 11, 2020	Tinta Hill 115I 058	Inferred	2.2 Mt	1.29 g/t Au 44.75 g/t Ag 0.17% Cu 0.63% Pb 1.29% Zn	2.8 t Au 97.7 t Ag 3.7 kt Cu 13.7 kt Pb 28.2 kt Zn	90.6 koz Au 3.1 moz Ag 8.1 mlbs Cu 30.1 mlbs Pb 62.2 mlbs Zn
Wellgreen Magmatic sulphide Nickel Creek Platinum Corp. September 25, 2018	Central Zone 115G 024	Measured and Indicated	323.4 Mt	0.05 g/t Au 0.16% Cu 0.26% Ni 0.01% Co 0.25 g/t Pt 0.26 g/t Pd	14.9 t Au 0.5 Mt Cu 0.9 Mt Ni 48.5 kt Co 81.7 t Pt 82.4 t Pd	0.5 moz Au 1.1 blbs Cu 1.9 blbs Ni 106.9 mlbs Co 2.6 moz Pt 2.6 moz Pd
		Inferred	108.1 kt	0.04 g/t Au 0.15% Cu 0.29% Ni 0.02% Co 0.26 g/t Pt 0.28 g/t Pd	4.3 kg Au 162.1 t Cu 313.5 t Ni 17.3 t Co 27.7 kg Pt 30.2 kg Pd	139.0 oz Au 357.5 klbs Cu 0.7 mlbs Ni 38.1 klbs Co 0.9 koz Pt 1.0 koz Pd
White Gold Orogenic White Gold Corp. July 10, 2020	Arc 115O 166 Golden Saddle 115O 165	Indicated	15.6 Mt	2.28 g/t Au	35.5 t Au	1.1 moz Au
		Inferred	9.0 Mt	1.39 g/t Au	12.5 t Au	0.4 moz Au

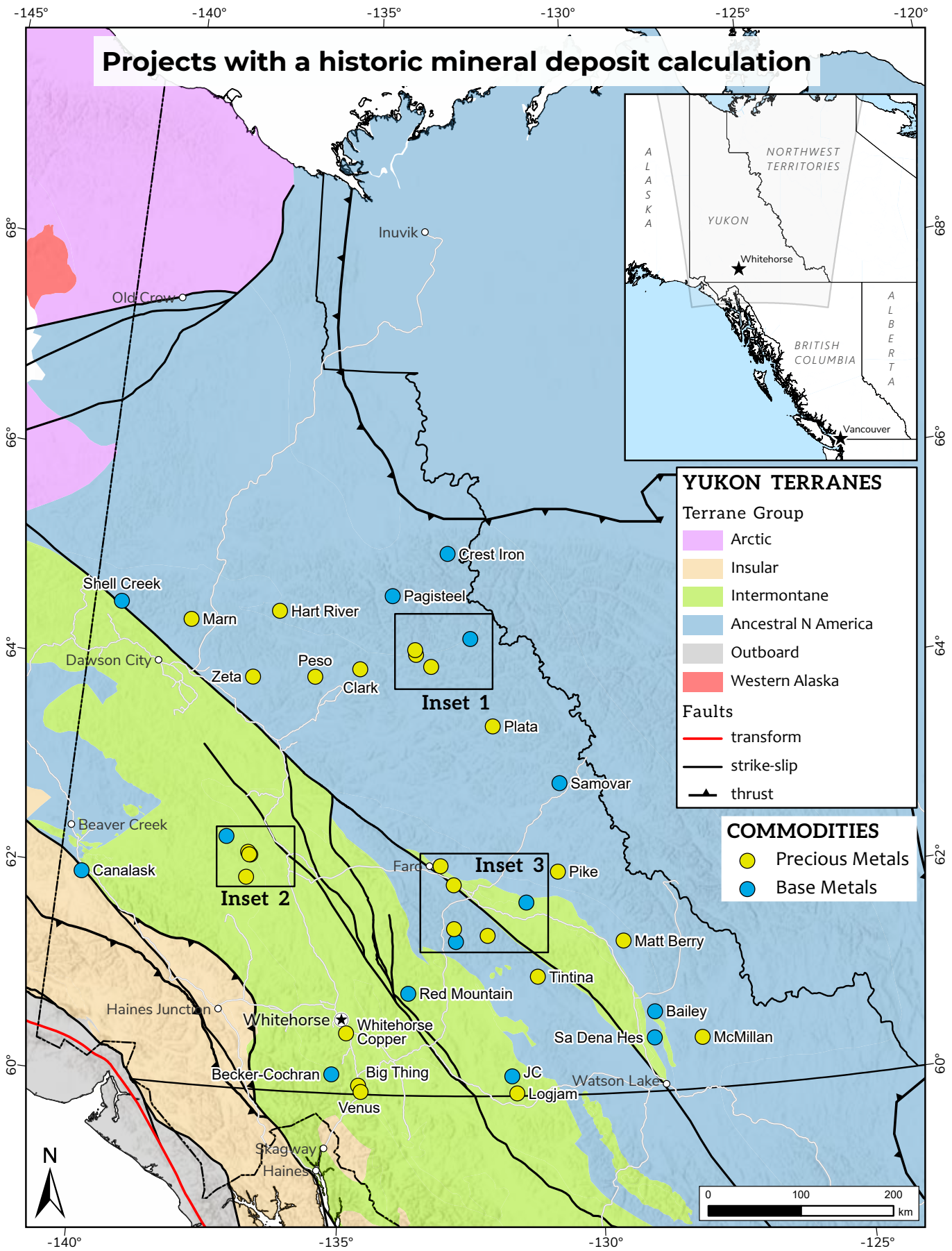


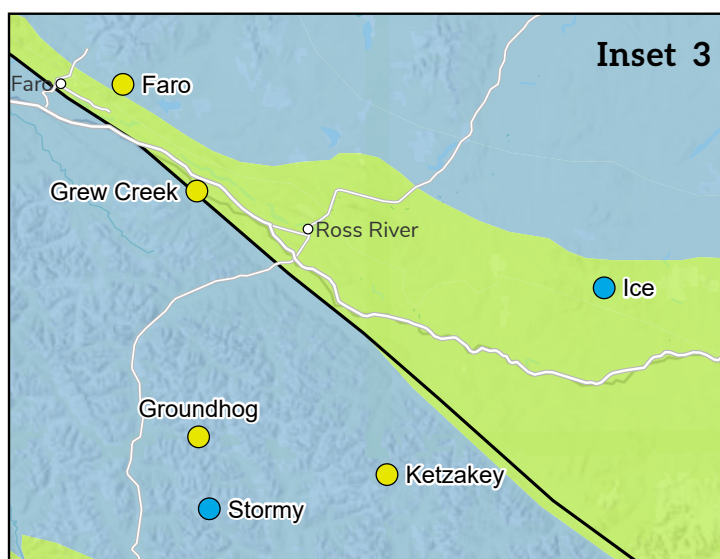
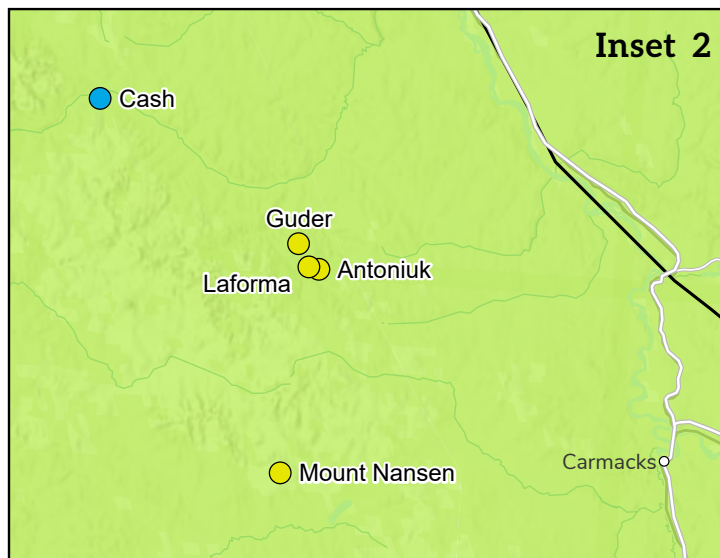
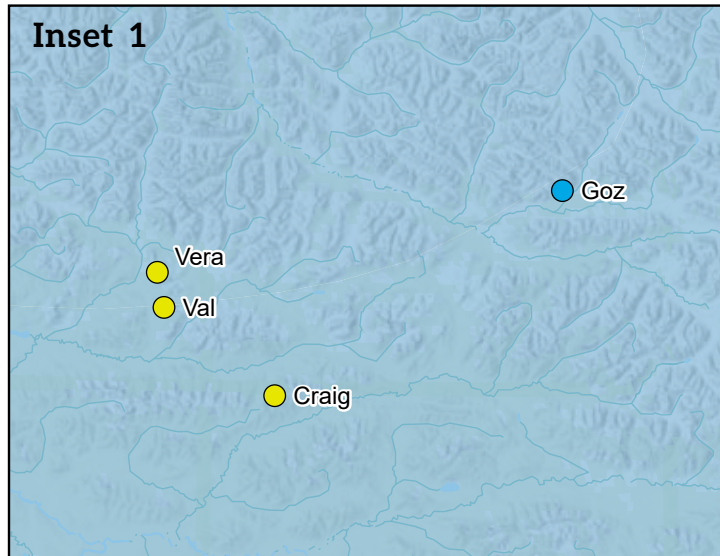
Victoria Gold's Eagle pit; their heap leach pad is in the background.

Project name Deposit type Owner/optionee Date of reference	Mineralized zone(s) Yukon MINFILE number	Material (if specified) and Category	Tonnes	Grade	Contained metals	
					Metric	Imperial
Compliant resources calculations						
Wolverine Volcanogenic massive sulphide Under Care and Maintenance with Assessment and Abandoned Mines Yukon February 28, 2007	Wolverine 115I 223	Proven	0.6 Mt	1.24 g/t Au 246.9 g/t Ag 0.96% Cu 1.24% Pb 10.31% Zn	0.7 t Au 139.3 t Ag 5.4 kt Cu 7.0 kt Pb 58.1 kt Zn	22.5 koz Au 4.5 moz Ag 11.9 mlbs Cu 15.4 mlbs Pb 128.2 mlbs Zn
		Probable	4.6 Mt	1.37 g/t Au 286.2 g/t Ag 0.91% Cu 1.26% Pb 9.59% Zn	6.3 t Au 1.3 kt Ag 41.8 kt Cu 57.8 kt Pb 0.4 Mt Zn	202.1 koz Au 42.2 moz Ag 92.0 mlbs Cu 127.4 mlbs Pb 1.0 blbs Zn
		Measured and Indicated	4.5 Mt	1.7 g/t Au 354.84 g/t Ag 1.16% Cu 1.57% Pb 12.14% Zn	7.6 t Au 1.6 kt Ag 51.8 kt Cu 70.0 kt Pb 0.5 Mt Zn	243.2 koz Au 50.9 moz Ag 114.3 mlbs Cu 154.3 mlbs Pb 1.2 blbs Zn
		Inferred	1.7 Mt	1.71 g/t Au 385.4 g/t Ag 1.23% Cu 1.74% Pb 12.16% Zn	2.9 t Au 0.7 kt Ag 20.8 kt Cu 29.5 kt Pb 205.9 kt Zn	93.1 koz Au 21.0 moz Ag 45.9 mlbs Cu 64.9 mlbs Pb 0.5 blbs Zn
Yukon Base Metal Project Mississippi Valley-type Overland Resources Ltd. February 10, 2020	Andrew 105K 089 Darcy 105K 004 Darin 105K 033	Measured and Indicated	10.3 Mt	1.02% Pb 5.4% Zn	105.1 kt Pb 0.6 Mt Zn	231.7 mlbs Pb 1.2 blbs Zn
		Inferred	2.2 Mt	0.17% Pb 4.68% Zn	3.8 kt Pb 103.9 kt Zn	8.3 mlbs Pb 229.0 mlbs Zn



Portal into Bellekeno mine at Hecla Mining Company's recently acquired Keno Hill silver district.





PROPERTY	COMMODITIES
Antoniuk	Au
Bailey	WO ₃
Becker-Cochran	Sb
Big Thing	Au, Ag
Canalask	Ni
Cash	Cu, Mo
Clark	Ag, Pb, Zn
Craig	Ag, Pb, Zn
Crest Iron	Fe
Faro	Au, Ag, Pb, Zn
Goz	Zn
Grew Creek	Au
Groundhog	Au, Ag, Pb, Zn
Guder	Au, Ag
Hart River	Au, Ag, Cu, Pb, Zn
Ice	Cu
JC	Sn
Ketzakey	Ag, Pb
Laforma	Au
Logjam	Au, Ag
Marn	Au, Ag, Cu, WO ₃
Matt Berry	Ag, Pb, Zn
McMillan	Ag, Pb, Zn
Mount Nansen	Au, Ag
Pagisteel	Fe
Peso	Ag, Pb
Pike	Au, Cu
Plata	Au, Ag, Pb, Zn
Red Mountain	Mo
Sa Dena Hes	Pb, Zn
Samovar	BaSO ₄
Shell Creek	Fe
Stormy	Mo, WO ₃
Tintina	Ag, Pb, Zn
Val	Ag, Pb, Zn
Venus	Au, Ag, Pb, Zn
Vera	Ag, Pb, Zn
Whitehorse Copper	Au, Ag, Cu, Mo
Zeta	Ag

Project Deposit type Owner/optionee Date of reference	Mineralized zone Yukon MINFILE number	Material (if specified) and Category	Tonnes	Grade	Contained metals	
					Metric	Imperial
Historic resources						
Antoniuk Porphyry 0878950 B.C. Ltd. March 28, 1988	Antoniuk 115I 111	<i>Oxide</i> Indicated	2.6 Mt	0.99 g/t Au	2.6 t Au	83.5 koz Au
		<i>Sulphide</i> Indicated	1.1 Mt	1.5 g/t Au	1.6 t Au	51.5 koz Au
Bailey Skarn North American Tungsten Corporation Ltd. March 30, 1988	B Showing 105A 017	Indicated	0.4 Mt	1.0% WO ₃	4.5 kt WO ₃	9.8 mlbs WO ₃
Becker-Cochran Epithermal Tincorp Metals Inc. May 07, 1986	Becker-Cochran 105D 027	Estimated	127.0 kt	4.0% Sb	5.1 kt Sb	11.2 mlbs Sb
Big Thing Epithermal January 01, 1988	Big Thing 105D 009	<i>Oxide</i> Proven	74.8 kt	13.4 g/t Au 349.7 g/t Ag	1.0 t Au 26.1 t Ag	32.2 koz Au 0.8 moz Ag
Canalask Magmatic sulphide Victoria Gold Corp. November 08, 1968	Canalask 115F 045	Probable and possible	390.2 kt	1.35% Ni	5.3 kt Ni	11.6 mlbs Ni
Cash Porphyry August 01, 1975	Cash 115I 037		36.3 Mt	0.18% Cu 0.01% Mo	67.2 kt Cu 4.0 kt Mo	148.1 mlbs Cu 8.8 mlbs Mo
Clark Manto Ivan Elash March 17, 1988	Clark 106D 011		297.0 kt	232.5 g/t Ag 5.64% Pb 4.6% Zn	69.0 t Ag 16.8 kt Pb 13.7 kt Zn	2.2 moz Ag 36.9 mlbs Pb 30.1 mlbs Zn
Craig Mississippi Valley-type Strategic Metals Ltd. January 01, 2002	Craig 106C 073		0.9 Mt	123.4 g/t Ag 13.5% Pb 8.5% Zn	108.0 t Ag 118.1 kt Pb 74.4 kt Zn	3.5 moz Ag 260.4 mlbs Pb 164.0 mlbs Zn
Crest Iron Volcanogenic massive sulphide Chevron Canada Ltd. July 17, 2006	Iron Creek 105C 021		11 196 Mt	43.82% Fe	4906 Mt Fe	10816 blbs Fe
Faro Clastic-dominated massive sulphide Under Care and Maintenance with Government of Canada February 06, 1997	Dy-Grizzly 105K 101		17.2 Mt	0.75 g/t Au 71.63 g/t Ag 4.85% Pb 6.38% Zn	13.0 t Au 1.2 kt Ag 0.8 Mt Pb 1.1 Mt Zn	0.4 moz Au 39.7 moz Ag 1.8 blbs Pb 2.4 blbs Zn
Goz Mississippi Valley-type Alianza Minerals Ltd. April 01, 2009	Main Zone 106C 020		2.9 Mt	11.25% Zn	325.5 kt Zn	0.7 blbs Zn
Grew Creek Epithermal Sabre Gold Mines Corp. March 17, 1998	Grew Creek 105K 009		0.5 Mt	5.27 g/t Au	2.8 t Au	89.4 koz Au

Project Deposit type Owner/optionee Date of reference	Mineralized zone Yukon MINFILE number	Material (if specified) and Category	Tonnes	Grade	Contained metals	
					Metric	Imperial
Historic resources						
Groundhog Manto Honey Badger Silver Inc. November 30, 1988	Lucky / MF 105F 168 No. 2 / No. 2-A 105F 171 No. 3 105F 170 PN 105F 169 Zeus 105F 172	Probable	34.6 kt	0.28 g/t Au 164.38 g/t Ag 5.79% Pb 3.38% Zn	9.5 kg Au 5.7 t Ag 2.0 kt Pb 1.2 kt Zn	306.0 oz Au 183.1 koz Ag 4.4 mlbs Pb 2.6 mlbs Zn
		Indicated	186.9 kt	0.18 g/t Au 68.73 g/t Ag 2.7% Pb 4.13% Zn	34.4 kg Au 12.8 t Ag 5.0 kt Pb 7.7 kt Zn	1.1 koz Au 0.4 moz Ag 11.1 mlbs Pb 17.0 mlbs Zn
		Possible	10.2 kt	0.26 g/t Au 75.92 g/t Ag 3.49% Pb 3.06% Zn	2.6 kg Au 0.8 t Ag 357.3 t Pb 312.8 t Zn	84.0 oz Au 25.0 koz Ag 0.8 mlbs Pb 0.7 mlbs Zn
Guder Skarn Triumph Gold Corp. April 07, 1989	Margarete Vein 115I 053		123.8 kt	4.21 g/t Au 47.2 g/t Ag	0.5 t Au 5.8 t Ag	16.8 koz Au 187.8 koz Ag
Hart River Volcanogenic massive sulphide Michael Power January 01, 1997	Mark 116A 009		0.5 Mt	1.41 g/t Au 49.7 g/t Ag 1.45% Cu 0.87% Pb 3.65% Zn	0.7 t Au 26.0 t Ag 7.6 kt Cu 4.6 kt Pb 19.1 kt Zn	23.7 koz Au 0.8 moz Ag 16.7 mlbs Cu 10.0 mlbs Pb 42.2 mlbs Zn
Ice Volcanogenic massive sulphide Yukon Zinc Corp. June 02, 2003	Ice 105G 118	Indicated	4.6 Mt	1.48% Cu	67.5 kt Cu	148.8 mlbs Cu
JC Skarn Mark Fekete January 01, 1981	JC 105B 040	Measured	1.1 Mt	0.54% Sn	6.1 kt Sn	13.5 mlbs Sn
Ketzakey Manto January 01, 1986	18B 105F 057		10.7 kt	545.1 g/t Ag 12.15% Pb	5.8 t Ag 1.3 kt Pb	187.6 koz Ag 2.9 mlbs Pb
Laforma Epithermal 0878950 B.C. Ltd. February 11, 2020	G-3 Vein 115I 054		340.8 kt	7.43 g/t Au	2.5 t Au	81.4 koz Au
Logjam Manto CMC Metals Ltd. July 20, 1983	10 Veins 105B 038		70.1 kt	3.02 g/t Au 393.2 g/t Ag	211.8 kg Au 27.6 t Ag	6.8 koz Au 0.9 moz Ag
Marn Skarn Canadian United Minerals Inc. March 30, 1986	Marn 116B 147		250.0 kt	7.8 g/t Au 15.6 g/t Ag 1.0% Cu 0.1% WO ₃	2.0 t Au 3.9 t Ag 2.5 kt Cu 250.0 t WO ₃	62.7 koz Au 125.4 koz Ag 5.5 mlbs Cu 0.6 mlbs WO ₃
Matt Berry Volcanogenic massive sulphide Nicolai Goepfel March 18, 1983	Matt Berry 105H 021		0.5 Mt	94.4 g/t Ag 6.12% Pb 4.64% Zn	50.4 t Ag 32.7 kt Pb 24.8 kt Zn	1.6 moz Ag 72.0 mlbs Pb 54.6 mlbs Zn
McMillan Manto Liard River Mining Co Ltd. January 16, 1991	Main Zone 095D 006 South Zone		1.5 Mt	83.98 g/t Ag 5.41% Pb 6.32% Zn	126.0 t Ag 81.2 kt Pb 94.8 kt Zn	4.1 moz Ag 179.0 mlbs Pb 209.0 mlbs Zn

Project Deposit type Owner/optionee Date of reference	Mineralized zone Yukon MINFILE number	Material (if specified) and Category	Tonnes	Grade	Contained metals	
					Metric	Imperial
Historic resources						
Mount Nansen Epithermal Mount Nansen Remediation Ltd. November 27, 2009	Brown-McDade 115I 064 Flex 115I 137 Huestis 115I 138 Webber 115I 065	Indicated Inferred	280.6 kt 204.9 kt	9.38 g/t Au 236.02 g/t Ag 9.11 g/t Au 250.77 g/t Ag	2.6 t Au 66.2 t Ag 1.9 t Au 51.4 t Ag	84.6 koz Au 2.1 moz Ag 60.0 koz Au 1.7 moz Ag
Pagisteel Iron oxide copper and gold breccias August 01, 1978	Pagisteel 106D 049		1.0 Mt	29.2% Fe	292.0 kt Fe	0.6 blbs Fe
Peso Epithermal Victoria Gold Corp. November 10, 1965	Peso & Rex Veins 106D 021		139.4 kt	653.1 g/t Ag 3.7% Pb	91.0 t Ag 5.2 kt Pb	2.9 moz Ag 11.4 mlbs Pb
Pike Orogenic August 31, 1981	Zone 1 105J 003		317.0 kt	76.25 g/t Au 0.61% Cu	24.2 t Au 1.9 kt Cu	0.8 moz Au 4.3 mlbs Cu
Plata Manto Honey Badger Silver Inc. January 30, 2008	P4 Vein 105N 003	Inferred	312.0 kt	3.81 g/t Au 390.8 g/t Ag 5.0% Pb 5.0% Zn	1.2 t Au 121.9 t Ag 15.6 kt Pb 15.6 kt Zn	38.2 koz Au 3.9 moz Ag 34.4 mlbs Pb 34.4 mlbs Zn
Red Mountain Porphyry Tintina Mines Ltd. November 09, 1995	Red Mountain 105C 009		187.3 Mt	0.18% Mo	329.6 kt Mo	0.7 blbs Mo
Sa Dena Hes Skarn Teck Resources Ltd. (50%), Pan Pacific Metal Mining Corp (50%) February 20, 2004	Main Zone 105A 013	Indicated	2.2 Mt	2.6% Pb 10.4% Zn	56.9 kt Pb 227.8 kt Zn	125.5 mlbs Pb 0.5 blbs Zn
Samovar Clastic-dominated massive barite Coyne, H. & Sons Ltd August 01, 1986	Samovar 105O 020		225.0 kt	90.0% BaSO ₄	202.5 kt BaSO ₄	0.4 blbs BaSO ₄
Shell Creek Iron formation K2 Resources Inc. September 23, 1969	Shell Creek 116C 029		0.5 kt	25.0% Fe	113.4 t Fe	249.9 klbs Fe
Stormy Skarn E-Energy Ventures Inc. November 10, 1959	Stormy 105F 011		15.3 kt	0.73% Mo 1.05% WO ₃	111.5 t Mo 160.3 t WO ₃	245.7 klbs Mo 353.4 klbs WO ₃
Tintina Manto Tintina Mines Ltd. January 01, 1981	Tintina 105G 006		90.8 kt	0.58 g/t Ag 6.0% Pb 10.0% Zn	52.7 kg Ag 5.4 kt Pb 9.1 kt Zn	1.7 koz Ag 12.0 mlbs Pb 20.0 mlbs Zn
Val Mississippi Valley-type Atac Resources Ltd. February 23, 1982	Siltstone Vein 106C 135	Indicated	22.0 kt	1027.4 g/t Ag 26.7% Pb 7.3% Zn	22.6 t Ag 5.9 kt Pb 1.6 kt Zn	0.7 moz Ag 12.9 mlbs Pb 3.5 mlbs Zn
Venus Orogenic Ron Berdahl January 01, 1987	Venus 105D 005		62.9 kt	10.75 g/t Au 235.9 g/t Ag 1.3% Pb 0.7% Zn	0.7 t Au 14.8 t Ag 0.8 kt Pb 0.4 kt Zn	21.7 koz Au 0.5 moz Ag 1.8 mlbs Pb 1.0 mlbs Zn

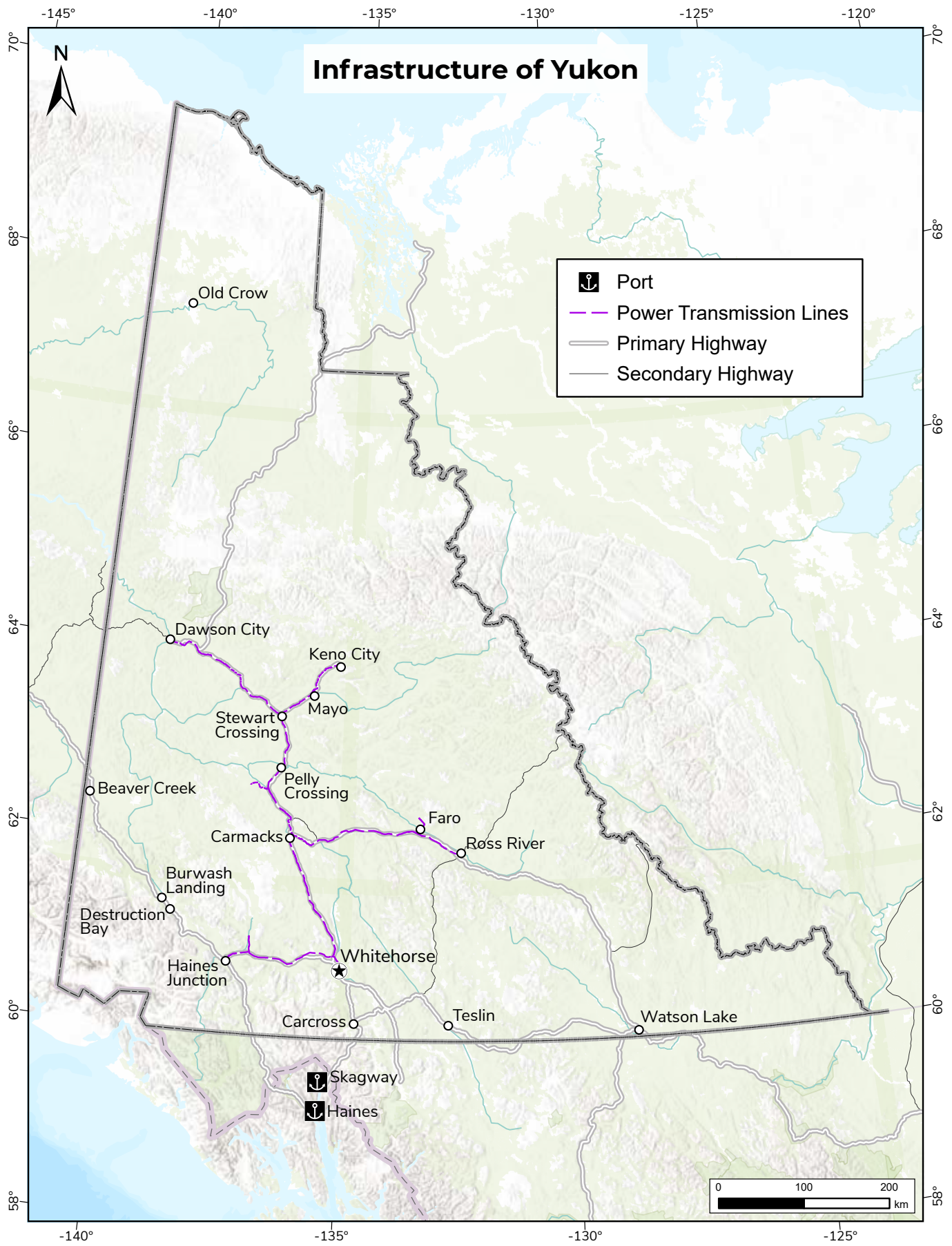
Project Deposit type Owner/optionee Date of reference	Mineralized zone Yukon MINFILE number	Material (if specified) and Category	Tonnes	Grade	Contained metals	
					Metric	Imperial
Historic resources						
Vera Manto Strategic Metals Ltd. February 05, 1985	Main 106C 083		356.2 kt	607.0 g/t Ag 3.18% Pb 3.47% Zn	216.2 t Ag 11.3 kt Pb 12.4 kt Zn	7.0 moz Ag 25.0 mlbs Pb 27.3 mlbs Zn
Whitehorse Copper Skarn H. Coyne & Sons Ltd. January 01, 1984	Best Chance 105D 211 Black Cub North 105D 217 Black Cub South 105D 218 Cowley Park 105D 230 GEM 105B 032 Keewenaw 105D 233 Kodiak Cub 105D 215		3.1 Mt	0.07 g/t Au 1.17 g/t Ag 0.95% Cu 0.02% Mo	203.8 kg Au 3.6 t Ag 29.0 kt Cu 0.6 kt Mo	6.6 koz Au 115.1 koz Ag 64.0 mlbs Cu 1.4 mlbs Mo
Zeta Greisen 18526 Yukon Inc. January 01, 1989	Zeta 115P 047		98.2 kt	557.8 g/t Ag	54.8 t Ag	1.8 moz Ag



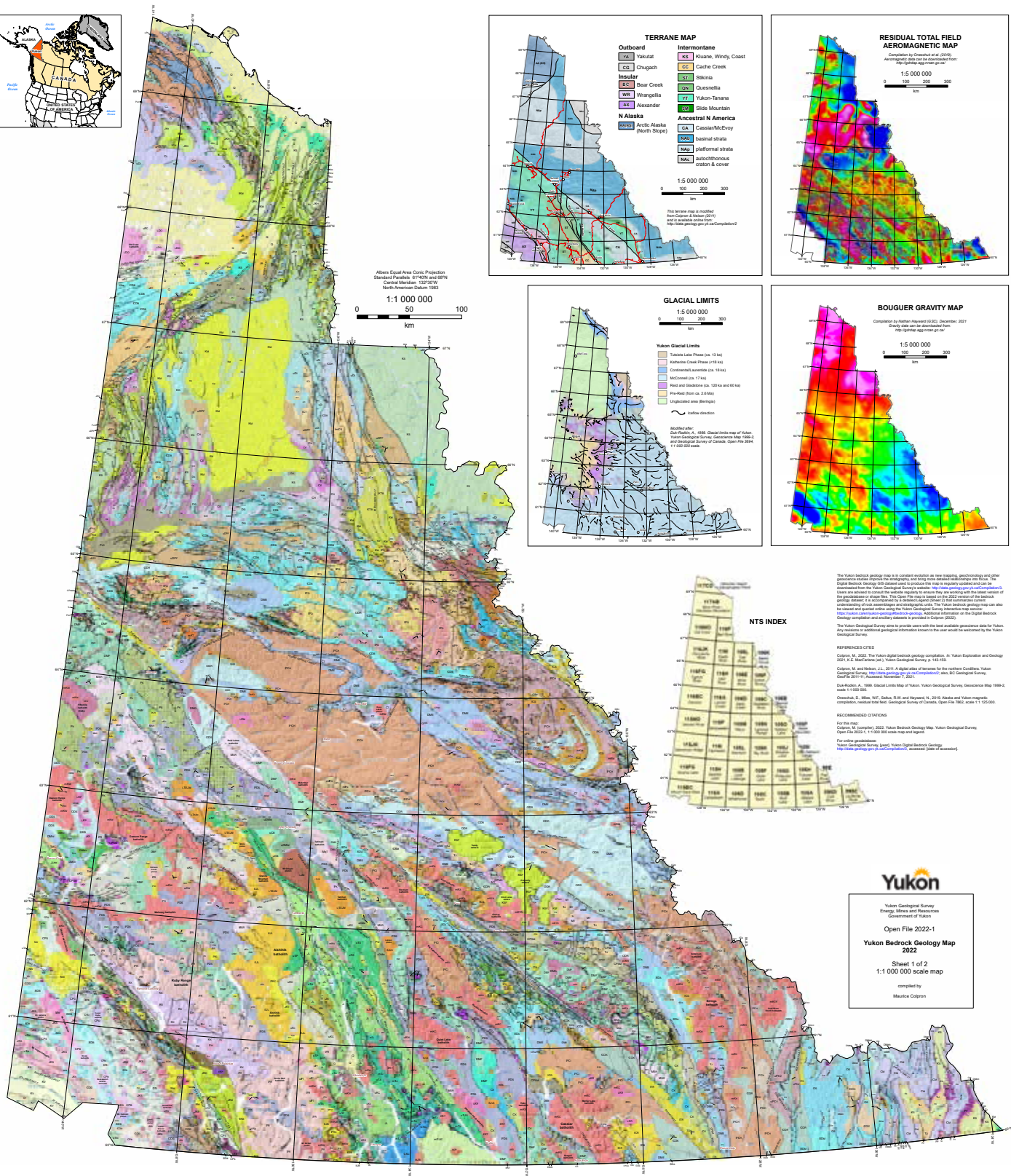
Historic mill and ore loading facilities of the Venus mine on the Windy Arm of Tagish Lake.



Massive pentlandite in drill core from the Wellgreen property, southwestern Yukon.



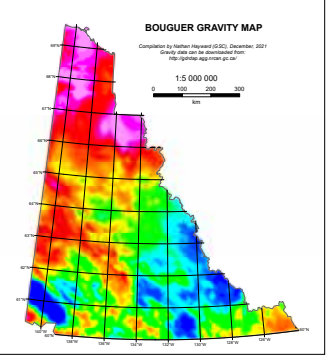
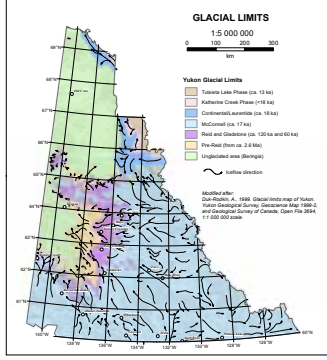
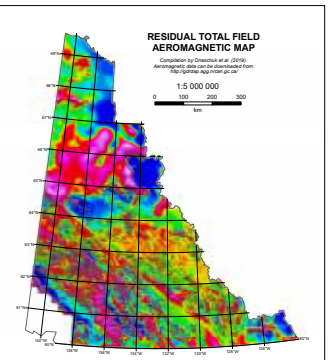
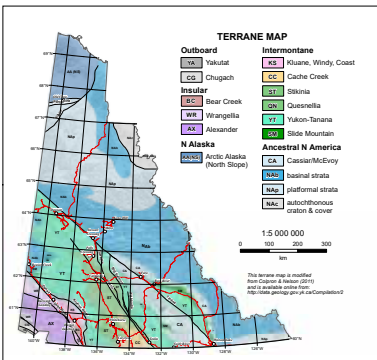
Yukon Bedrock Geology Map 2022



Albers Equal Area Conic Projection
Standard Parallels: 51°45'N and 69°N
Central Meridian: 132°30'W
North American Datum 1983

1:1 000 000

0 50 100
km



NTS INDEX

11700	11710	11720	11730	11740	11750
11760	11770	11780	11790	11800	11810
11820	11830	11840	11850	11860	11870
11880	11890	11900	11910	11920	11930
11940	11950	11960	11970	11980	11990
12000	12010	12020	12030	12040	12050
12060	12070	12080	12090	12100	12110
12120	12130	12140	12150	12160	12170
12180	12190	12200	12210	12220	12230
12240	12250	12260	12270	12280	12290
12300	12310	12320	12330	12340	12350
12360	12370	12380	12390	12400	12410
12420	12430	12440	12450	12460	12470
12480	12490	12500	12510	12520	12530
12540	12550	12560	12570	12580	12590
12600	12610	12620	12630	12640	12650
12660	12670	12680	12690	12700	12710
12720	12730	12740	12750	12760	12770
12780	12790	12800	12810	12820	12830
12840	12850	12860	12870	12880	12890
12900	12910	12920	12930	12940	12950
12960	12970	12980	12990	13000	13010
13020	13030	13040	13050	13060	13070
13080	13090	13100	13110	13120	13130
13140	13150	13160	13170	13180	13190
13200	13210	13220	13230	13240	13250
13260	13270	13280	13290	13300	13310
13320	13330	13340	13350	13360	13370
13380	13390	13400	13410	13420	13430
13440	13450	13460	13470	13480	13490
13500	13510	13520	13530	13540	13550
13560	13570	13580	13590	13600	13610
13620	13630	13640	13650	13660	13670
13680	13690	13700	13710	13720	13730
13740	13750	13760	13770	13780	13790
13800	13810	13820	13830	13840	13850
13860	13870	13880	13890	13900	13910
13920	13930	13940	13950	13960	13970
13980	13990	14000	14010	14020	14030
14040	14050	14060	14070	14080	14090
14100	14110	14120	14130	14140	14150
14160	14170	14180	14190	14200	14210
14220	14230	14240	14250	14260	14270
14280	14290	14300	14310	14320	14330
14340	14350	14360	14370	14380	14390
14400	14410	14420	14430	14440	14450
14460	14470	14480	14490	14500	14510
14520	14530	14540	14550	14560	14570
14580	14590	14600	14610	14620	14630
14640	14650	14660	14670	14680	14690
14700	14710	14720	14730	14740	14750
14760	14770	14780	14790	14800	14810
14820	14830	14840	14850	14860	14870
14880	14890	14900	14910	14920	14930
14940	14950	14960	14970	14980	14990
15000	15010	15020	15030	15040	15050
15060	15070	15080	15090	15100	15110
15120	15130	15140	15150	15160	15170
15180	15190	15200	15210	15220	15230
15240	15250	15260	15270	15280	15290
15300	15310	15320	15330	15340	15350
15360	15370	15380	15390	15400	15410
15420	15430	15440	15450	15460	15470
15480	15490	15500	15510	15520	15530
15540	15550	15560	15570	15580	15590
15600	15610	15620	15630	15640	15650
15660	15670	15680	15690	15700	15710
15720	15730	15740	15750	15760	15770
15780	15790	15800	15810	15820	15830
15840	15850	15860	15870	15880	15890
15900	15910	15920	15930	15940	15950
15960	15970	15980	15990	16000	16010
16020	16030	16040	16050	16060	16070
16080	16090	16100	16110	16120	16130
16140	16150	16160	16170	16180	16190
16200	16210	16220	16230	16240	16250
16260	16270	16280	16290	16300	16310
16320	16330	16340	16350	16360	16370
16380	16390	16400	16410	16420	16430
16440	16450	16460	16470	16480	16490
16500	16510	16520	16530	16540	16550
16560	16570	16580	16590	16600	16610
16620	16630	16640	16650	16660	16670
16680	16690	16700	16710	16720	16730
16740	16750	16760	16770	16780	16790
16800	16810	16820	16830	16840	16850
16860	16870	16880	16890	16900	16910
16920	16930	16940	16950	16960	16970
16980	16990	17000	17010	17020	17030
17040	17050	17060	17070	17080	17090
17100	17110	17120	17130	17140	17150
17160	17170	17180	17190	17200	17210
17220	17230	17240	17250	17260	17270
17280	17290	17300	17310	17320	17330
17340	17350	17360	17370	17380	17390
17400	17410	17420	17430	17440	17450
17460	17470	17480	17490	17500	17510
17520	17530	17540	17550	17560	17570
17580	17590	17600	17610	17620	17630
17640	17650	17660	17670	17680	17690
17700	17710	17720	17730	17740	17750
17760	17770	17780	17790	17800	17810
17820	17830	17840	17850	17860	17870
17880	17890	17900	17910	17920	17930
17940	17950	17960	17970	17980	17990
18000	18010	18020	18030	18040	18050
18060	18070	18080	18090	18100	18110
18120	18130	18140	18150	18160	18170
18180	18190	18200	18210	18220	18230
18240	18250	18260	18270	18280	18290
18300	18310	18320	18330	18340	18350
18360	18370	18380	18390	18400	18410
18420	18430	18440	18450	18460	18470
18480	18490	18500	18510	18520	18530
18540	18550	18560	18570	18580	18590
18600	18610	18620	18630	18640	18650
18660	18670	18680	18690	18700	18710
18720	18730	18740	18750	18760	18770
18780	18790	18800	18810	18820	18830
18840	18850	18860	18870	18880	18890
18900	18910	18920	18930	18940	18950
18960	18970	18980	18990	19000	19010
19020	19030	19040	19050	19060	19070
19080	19090	19100	19110	19120	19130
19140	19150	19160	19170	19180	19190
19200	19210	19220	19230	19240	19250
19260	19270	19280	19290	19300	19310
19320	19330	19340	19350	19360	19370
19380	19390	19400	19410	19420	19430
19440	19450	19460	19470	19480	19490
19500	19510	19520	19530	19540	19550
19560	19570	19580	19590	19600	19610
19620	19630	19640	19650	19660	19670
19680	19690	19700	19710	19720	19730
19740	19750	19760	19770	19780	19790
19800	19810	19820	19830	19840	19850
19860	19870	19880	19890	19900	19910
19920	19930	19940	19950	19960	19970
19980	19990	20000	20010	20020	20030
20040	20050	20060	20070	20080	20090
20100	20110	20120	20130	20140	20150
20160	20170	20180	20190	20200	20210
20220	20230	20240	20250	20260	20270
20280	20290	20300	20310	20320	20330
20340	20350	20360	20370	20380	20390
20400	20410	20420	20430	20440	20450
20460	20470	20480	20490	20500	20510
20520	20530	20540	20550	20560	20570
20580	20590	20600	20610	20620	20630
20640	20650	20660	20670	20680	

Index to project pages

Antoniuk	14	Logjam	15
AurMac	4	Lone Star	8
Bailey	14	Macmillan Pass	8
Becker-Cochran	14	Mactung	8
Big Thing	14	Mar (Mar-Tungsten)	8
Blende	4	Marg	8
Brewery Creek	4	Marn	15
Canalask	14	Matt Berry	15
Carmacks Copper	5	McMillan	15
Cash	14	Mel	8
Casino	5	Minto	8
Clark	14	Mount Nansen	16
Clear Creek	5	Northern Dancer (Logtung)	8
Clear Lake	5	Osiris	9
Coffee	6	Pagisteel	16
Craig	14	Peso (Peso, Rex)	16
Crest Iron	14	Pike	16
Dublin Gulch (Eagle, Olive)	6	Plata	16
Faro	14	QV	9
Freegold Mountain	6	Rau (Tiger)	9
Fyre Lake (Kona)	6	Raven	9
Goz	14	Red Mountain	16
Grew Creek	14	Risby	9
Groundhog	15	Sa Dena Hes	16
Guder (Margarete)	15	Samovar	16
Hart River (Mark)	15	Selwyn	9
Hasselberg (Wolf)	6	Shell Creek	16
Hobo (Red Mountain)	6	Silver Hart	10
Hyland Gold	7	Skukum Gold	10
Ice	15	Stormy	16
JC	15	Tinta Hill	10
Keg	7	Tintina	16
Keno Hill Silver District	7	Val	16
Ketza	7	Venus	16
Ketzakey	15	Vera	17
Klaza	7	Wellgreen	10
Kudz Ze Kayah (ABM, Krakatoa)	7	White Gold	10
Laforma	15	Whitehorse Copper	17
Logan	8	Wolverine	10
		Yukon Base Metal Project	11
		Zeta	17

Yukon Geological Survey
Department of Energy, Mines and Resources
Government of Yukon