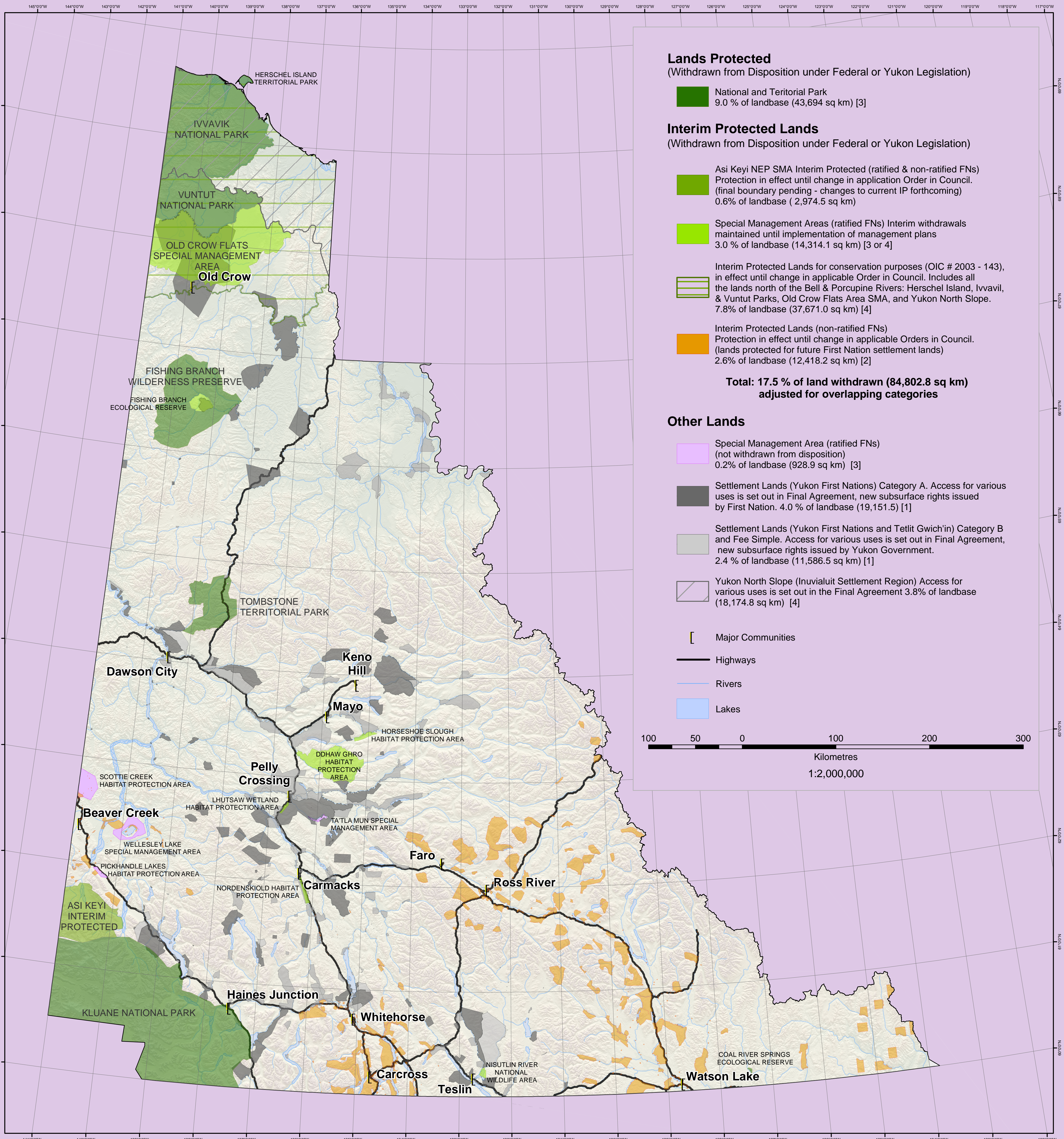


Yukon Land Status Map



Lands Protected

(Withdrawn from Disposition under Federal or Yukon Legislation)

National and Territorial Park
9.0 % of landbase (43,694 sq km) [3]

Interim Protected Lands

(Withdrawn from Disposition under Federal or Yukon Legislation)

Asi Keyi NEP SMA Interim Protected (ratified & non-ratified FNs)
Protection in effect until change in application Order in Council. (final boundary pending - changes to current IP forthcoming)
0.6% of landbase (2,974.5 sq km)

Special Management Areas (ratified FNs) Interim withdrawals
maintained until implementation of management plans
3.0 % of landbase (14,314.1 sq km) [3 or 4]

Interim Protected Lands for conservation purposes (OIC # 2003 - 143),
in effect until change in applicable Order in Council. Includes all
the lands north of the Bell & Porcupine Rivers: Herschel Island, Ivavik,
& Vuntut Parks, Old Crow Flats Area SMA, and Yukon North Slope.
7.8% of landbase (37,671.0 sq km) [4]

Interim Protected Lands (non-ratified FNs)
Protection in effect until change in applicable Orders in Council.
(lands protected for future First Nation settlement lands)
2.6% of landbase (12,418.2 sq km) [2]

Total: 17.5 % of land withdrawn (84,802.8 sq km)
adjusted for overlapping categories

Other Lands

Special Management Area (ratified FNs)
(not withdrawn from disposition)
0.2% of landbase (928.9 sq km) [3]

Settlement Lands (Yukon First Nations) Category A. Access for various
uses is set out in Final Agreement, new subsurface rights issued
by First Nation. 4.0 % of landbase (19,151.5) [1]

Settlement Lands (Yukon First Nations and Tetlit Gwich'in) Category B
and Fee Simple. Access for various uses is set out in Final Agreement,
new subsurface rights issued by Yukon Government.
2.4 % of landbase (11,586.5 sq km) [1]

Yukon North Slope (Inuvialuit Settlement Region) Access for
various uses is set out in the Final Agreement 3.8% of landbase
(18,174.8 sq km) [4]

[Major Communities

— Highways

— Rivers

— Lakes

100 50 0 100 200 300

Kilometres

1:2,000,000

Sources

Statistical Information

(refers to notation in legend)

- [1] Umbrella Final Agreement (Council of Yukon First Nations, CYFN) - Allotment of Settlement Land, p. 85
- [2] Land Quantum History and Allocation (Land Claims Implementation Secretariat, LCIS, Yukon Government) and digitized polygons (CIG, INAC)
- [3] Environment, YTG
- [4] Digitized Polygons (EMR, YTG)
- [5] Yukon Government Website (<http://www.gov.yk.ca/facts/#LANDS>)

Cartographic Representation

- Yukon First Nation Final Agreements for settlement lands and SMAs
- Land Claims (LCIS) YTG for interim protected lands (1:250 000 paper maps); digital files from Claims & Indian Government, DIAND
- Department of Environment (YTG) - (GIS website: First Nation Settlement Lands, Parks and Protected Areas) for digital version of selected settlement lands, parks and ecological reserves
- Department of Energy, Mines & Resources (YTG) for digital version of selected settlement lands and interim protect lands

Designation

- Umbrella Final Agreement (CYFN)
- Yukon First Nation Final Agreements
- Gwich'in Comprehensive Land Claim Agreement
- The Inuvialuit Final Agreement
- Parks and Lands Certainty Act
- National Parks Act
- Privy Council Orders of Canada
- Yukon Orders in Council

Yukon Albers Equal Area Projection
North American Datum 1983

This map identifies those Yukon lands which may be subject to terms and conditions of use and access other than those set out in federal or Yukon laws of general application. The terms and conditions of use that apply to those lands vary and are set out in their relevant legislation.

This map is a generalized graphical representation of areas that are appropriate to be displayed at a 1:2 000 000 scale; smaller areas are not shown. The accuracy of the digital information is adequate for the representation at this scale but the data should not be used at a more detailed scale. The data are not to be used for statistical analysis, nor should they be used to resolve boundary issues.

This map reflects our best understanding of the current status of the various Yukon lands portrayed. Every effort has been made to ensure accurate representation of the type, size, and location of designation. However, it does not constitute a legal opinion. For clarification, readers should consult with the various agencies responsible for the administration of those lands.

This map can be used as a background layer to which additional land use interests may be added.

This document was developed in consultation with Claims and Indian Government (CIG), Indian and Northern Affairs Canada (INAC), Claims Research and Implementation (INAC), Land Claims Secretariat (YTG), and Mining Recorder Offices (YTG).

Last Revised in January 2005
Department of Energy, Mines and Resources
Government of Yukon
Rm 102 - 300 Main St
Whitehorse, Yukon, Y1A 2B5

Yukon
Energy, Mines and Resources
Minerals Development Branch