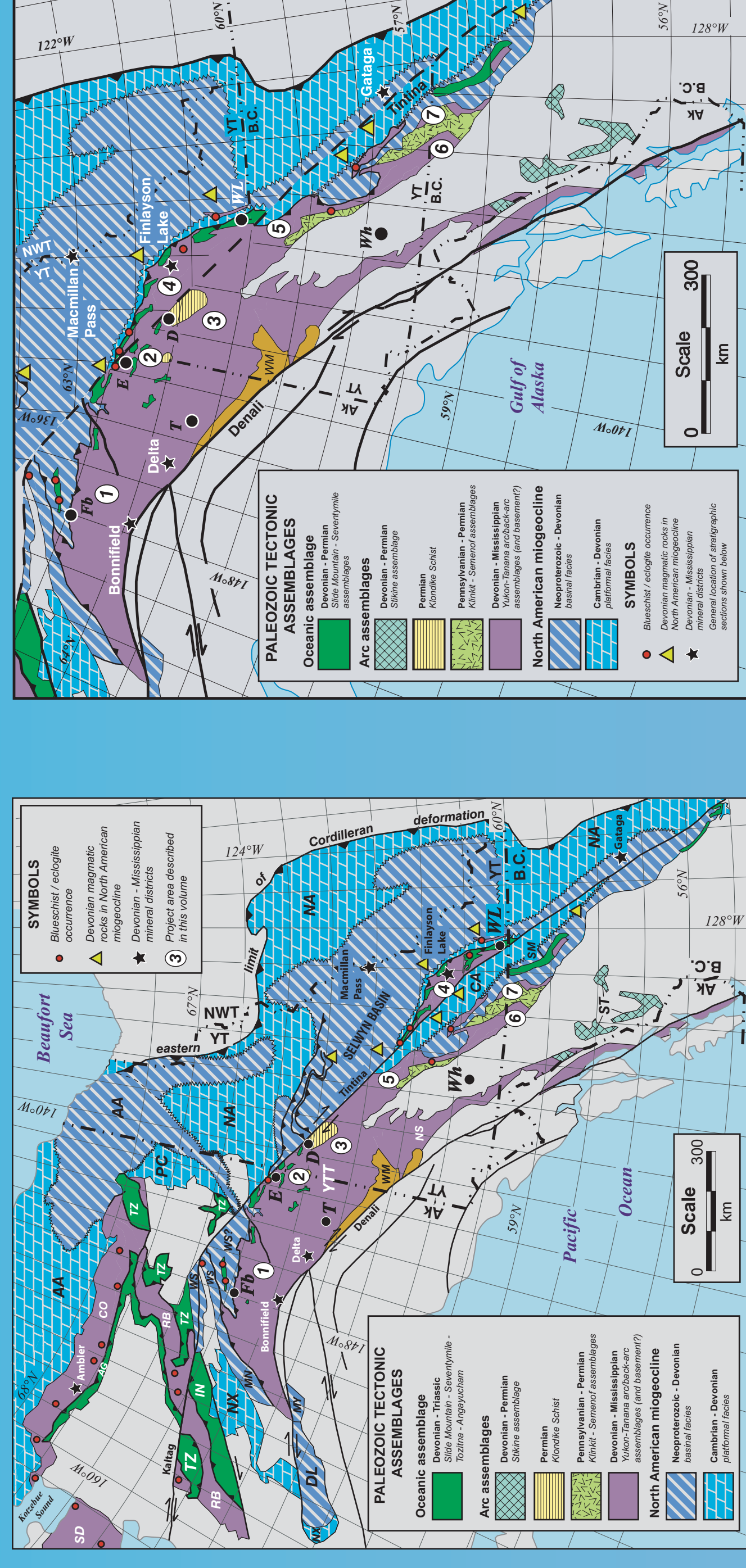


FINLAYSON LAKE MASSIVE SULPHIDE DISTRICT, YUKON-TANANA TERRANE, SOUTHEASTERN YUKON

Yukon -Tanana Terrane in the Northern Cordillera



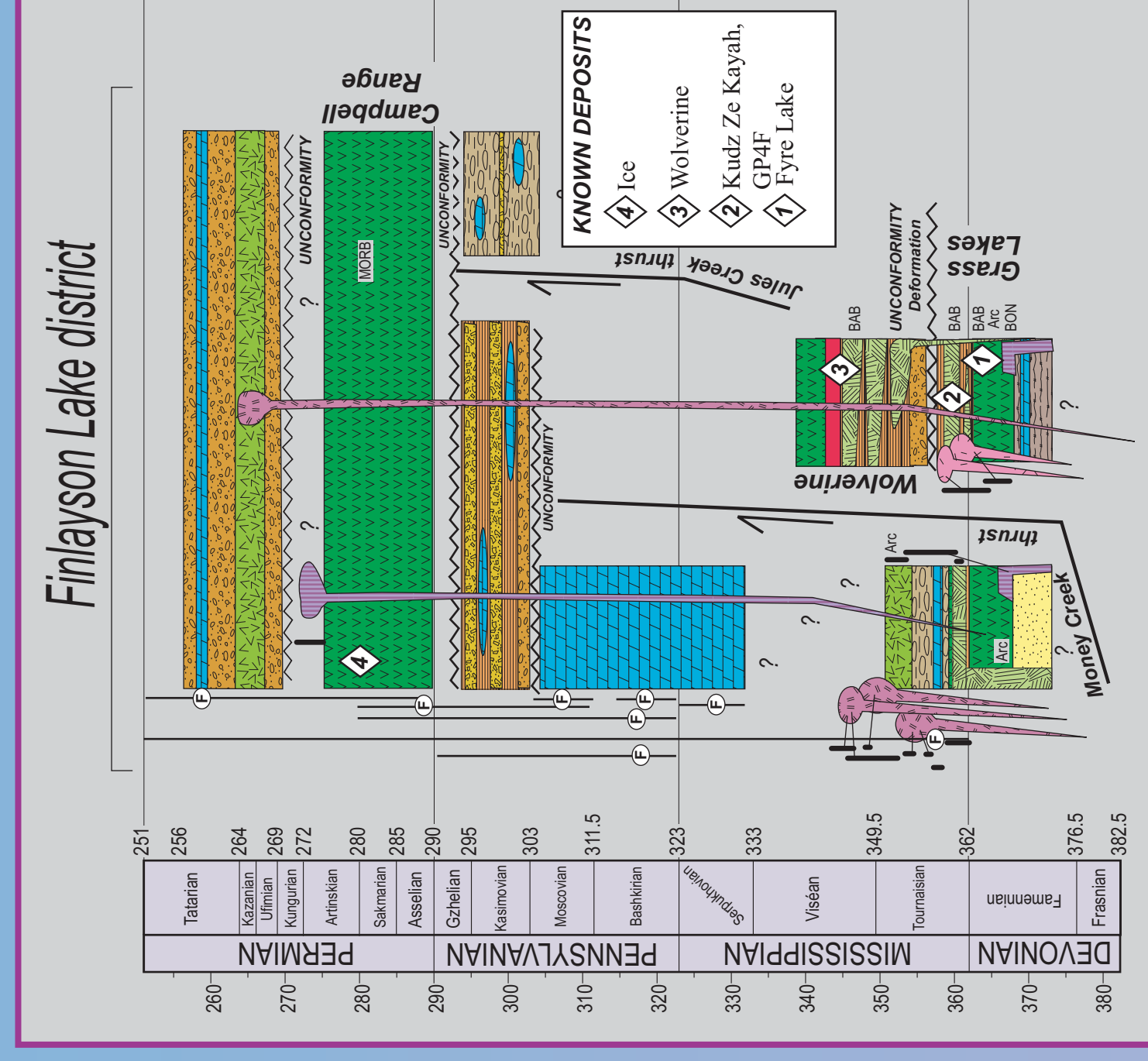
Current Distribution

Extending from east-central Alaska to northern British Columbia, Yukon-Tanana Terrane (YTT) is one of the so-called peri-cratonic terranes of the Canadian Cordillera. It comprises mainly Upper Paleozoic poly-deformed and variably metamorphosed meta-sedimentary and meta-volcanic rocks that were mainly deposited in continental arc and back-arc basin environments. Volcanic-hosted massive sulphide districts have been discovered in eastern Alaska (Delta and Bonfield) and more recently in the area near Finlayson Lake, southeastern Yukon.

Pre-Tintina Fault

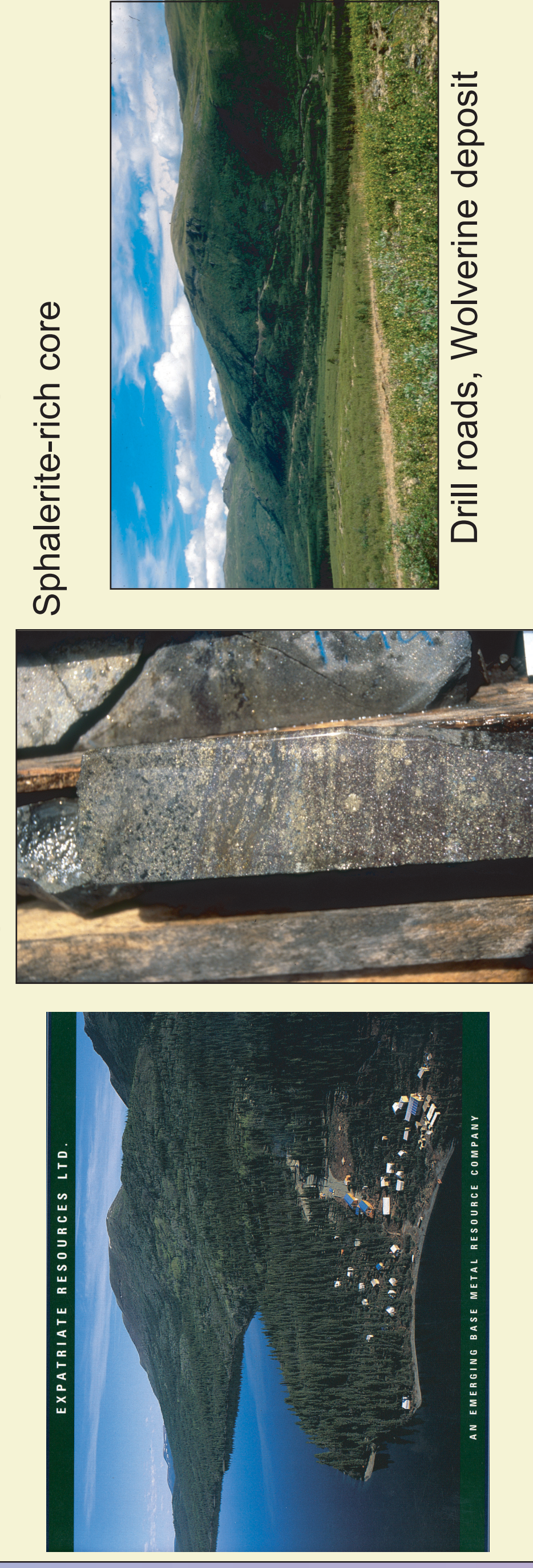
To date, 5 deposits and numerous occurrences have been discovered in the Finlayson Lake district. These include Kuduz Ze Kayah (11.3 Mt, 5.9% Zn, 0.9% Cu, 1.5% Pb, 1.3 g/t Au, 133 g/t Ag); GP4F (1.5Mt, 6.4% Zn, 0.11% Cu, 3.1% Pb, 2.0g/t Au, 90g/t Ag); Wolverine Lake (6.2Mt, 12.7% Zn, 1.3% Cu, 1.5% Pb, 1.76 g/t Au, 371g/t Ag); Fyre (8.2 Mt, 2.1% Cu, 0.11% Co, 0.73 g/t Au) and Ice (4.56 Mt, 1.48% Cu).

Most of the deposits occur in the Devonian-Mississippian Grass Lakes succession, in rocks with continental arc (Fyre) or back-arc affinities (Kuduz Ze Kayah, GP4F and Wolverine). The Ice deposit occurs in the Permian Campbell Range basalt that was likely deposited in a back-arc environment.



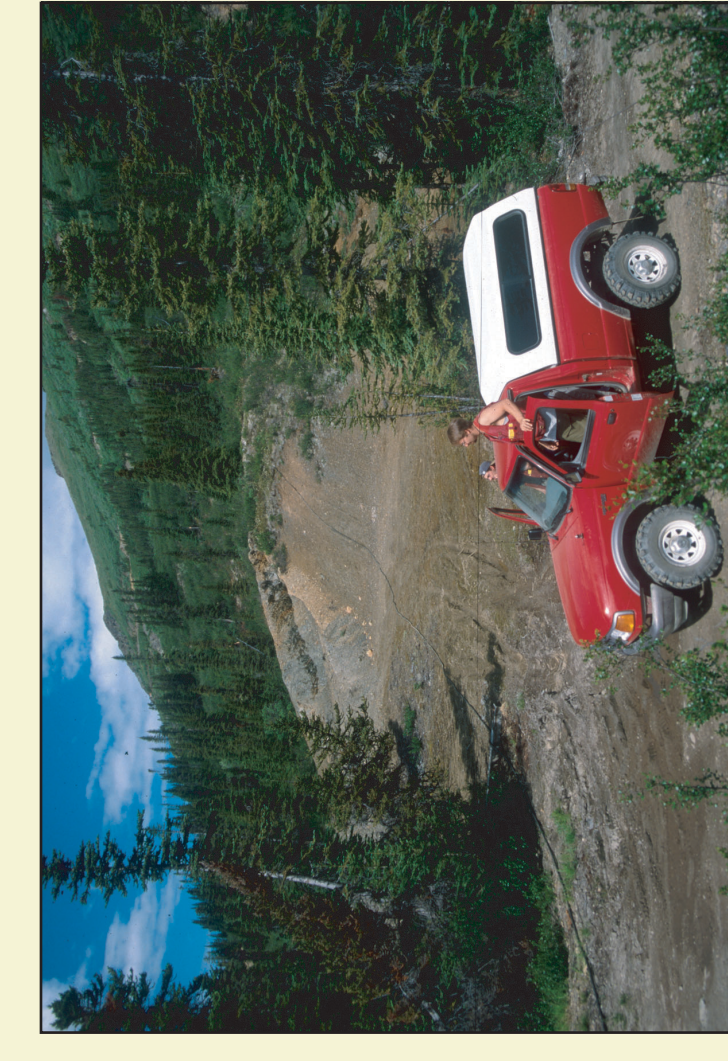
Felsic Meta-Volcanic-Hosted (Zn-Cu-Pb-Ag-Au)

Wolverine Lake (Expatriate Resources)

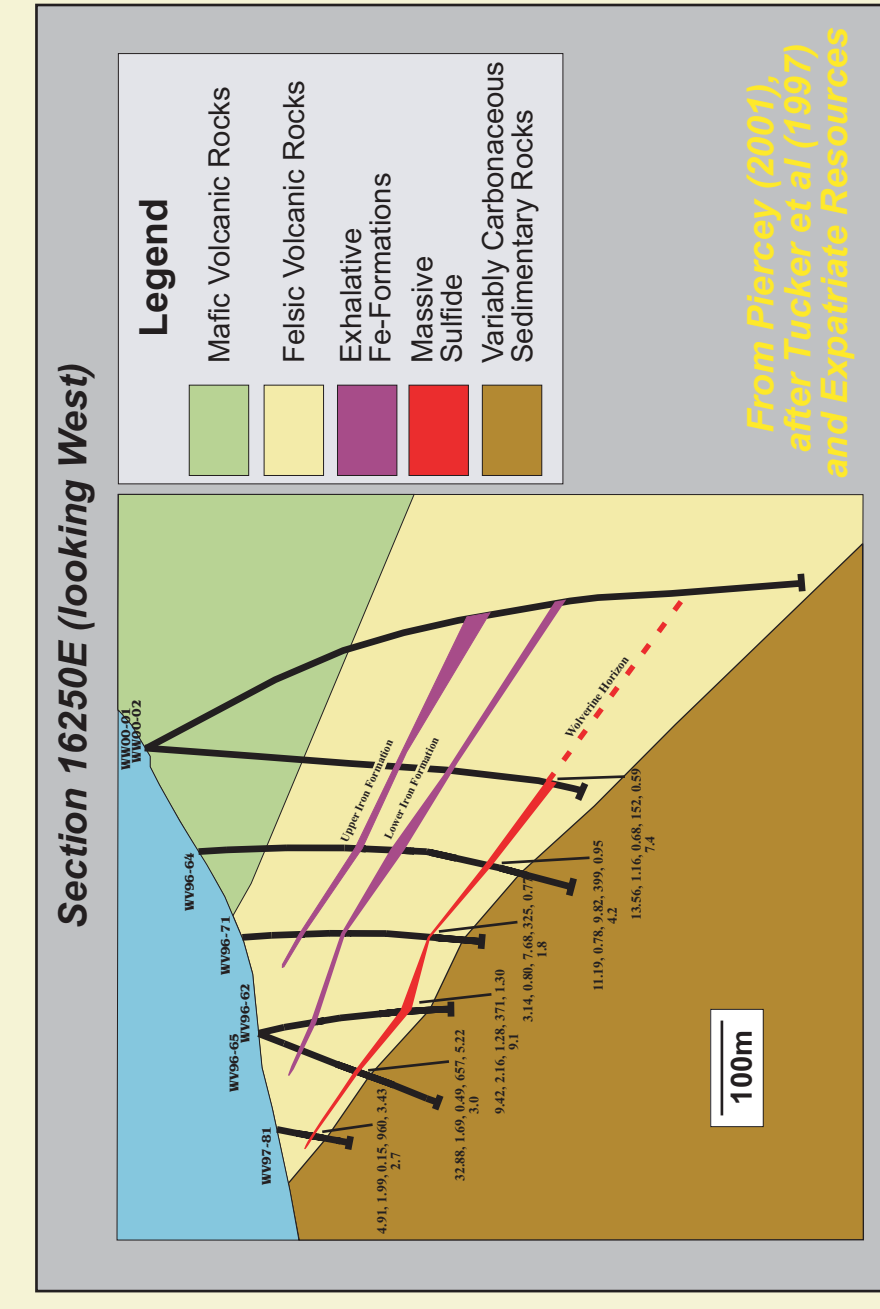


Sphalerite-rich core

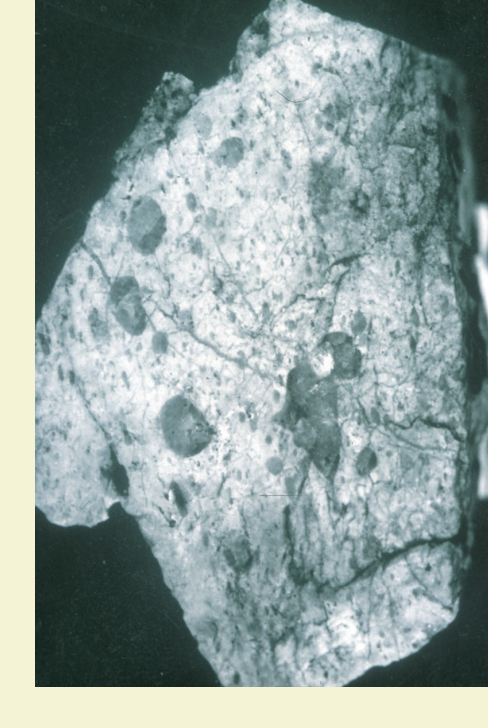
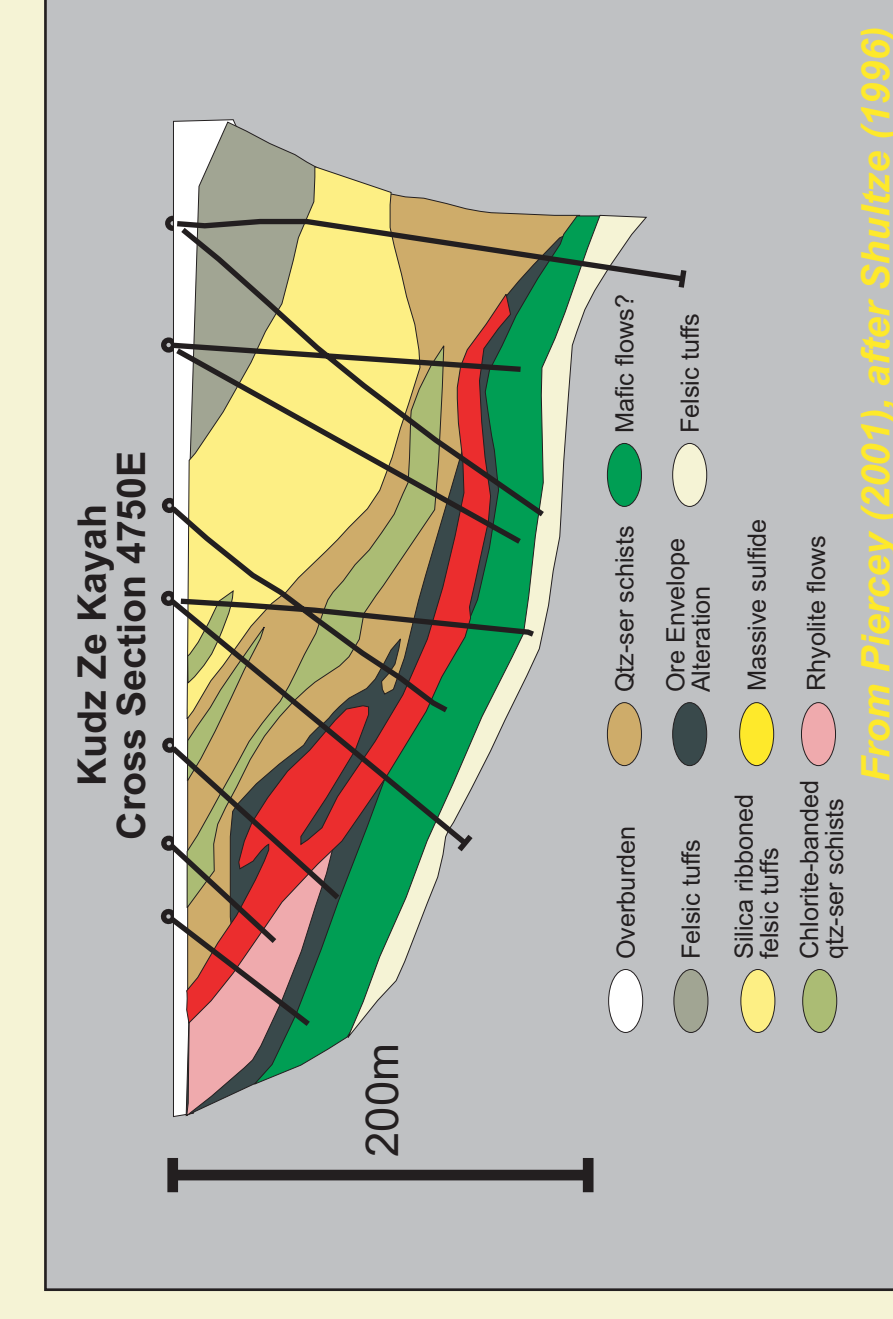
Drill roads, Wolverine deposit



Surface expression of Wolverine deposit



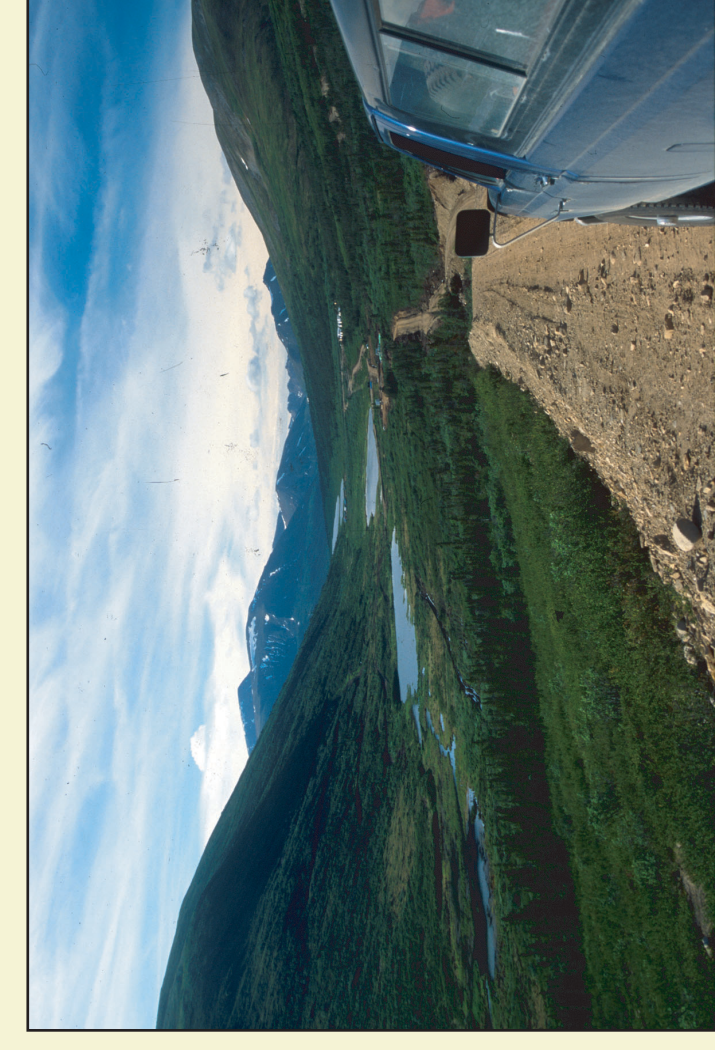
Kuduz Ze Kayah (Teckcominco)



Amygdaloidal meta-rhyolite in hanging wall



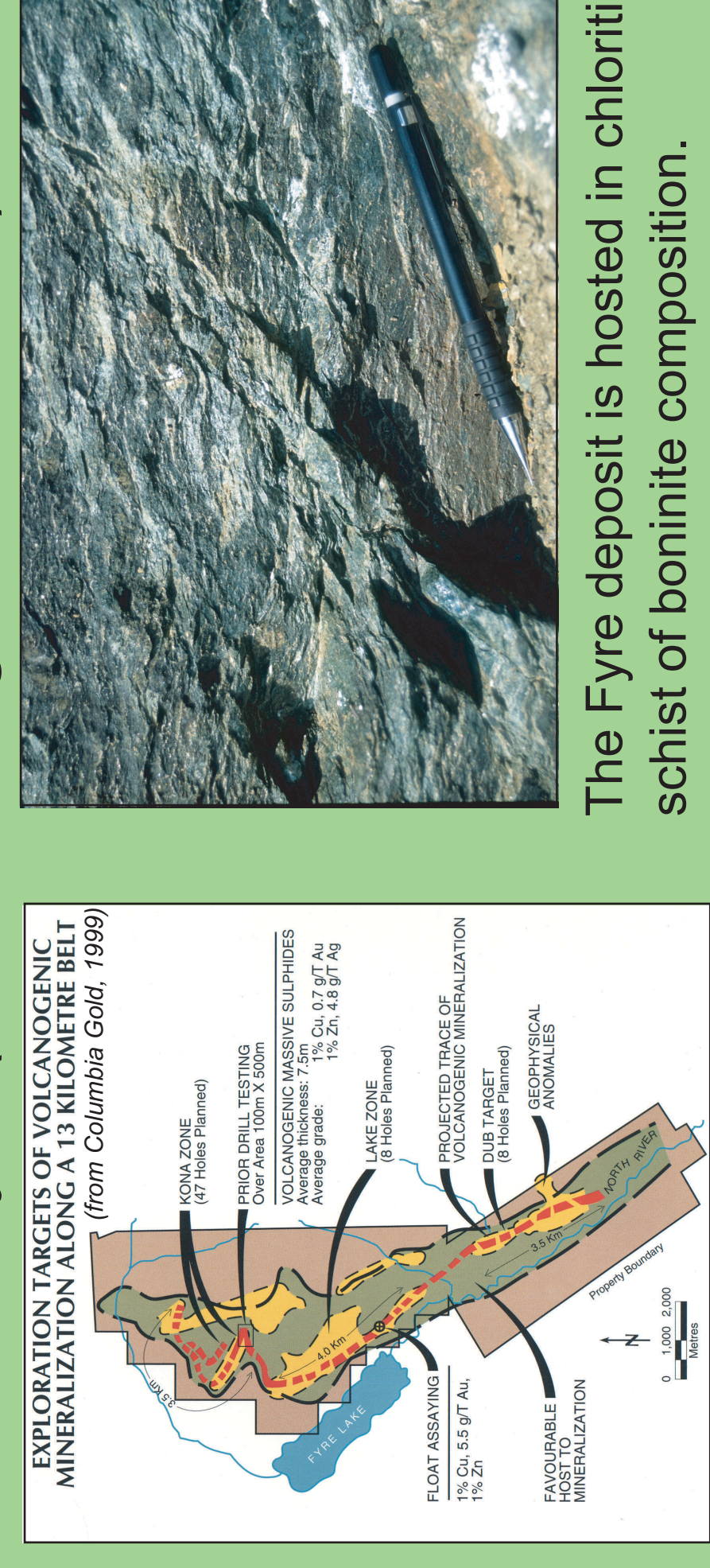
View to southeast obliquely across strike. GP4F deposit is on other side of hill behind the lakes.



Deposit underlies far end of the nearer of the three lakes in stratigraphy dipping toward viewer

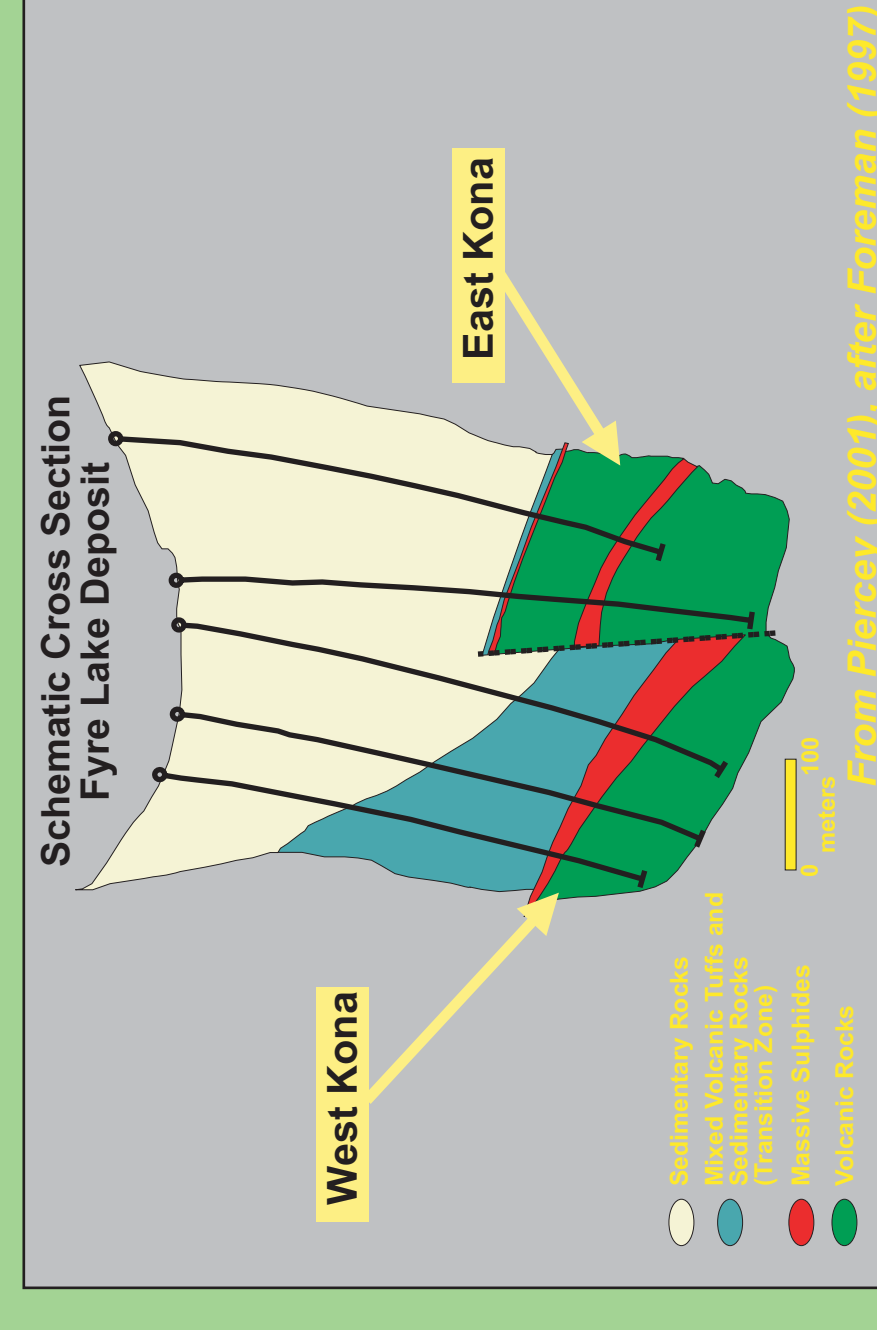
Mafic Meta-Volcanic-Hosted (Cu-Co-Au)

Fyre (Pacific Ridge Resources)



EXPLORATION TARGETS OF VOLCANOGENIC MINERALIZATION ALONG A 13 KILOMETRE BELT (from Colborne Geol. 1999)

The Fyre deposit is hosted in chloritic schist of boninite composition.



Schematic Cross Section Fyre Lake Deposit (from Colborne Geol. 1999)



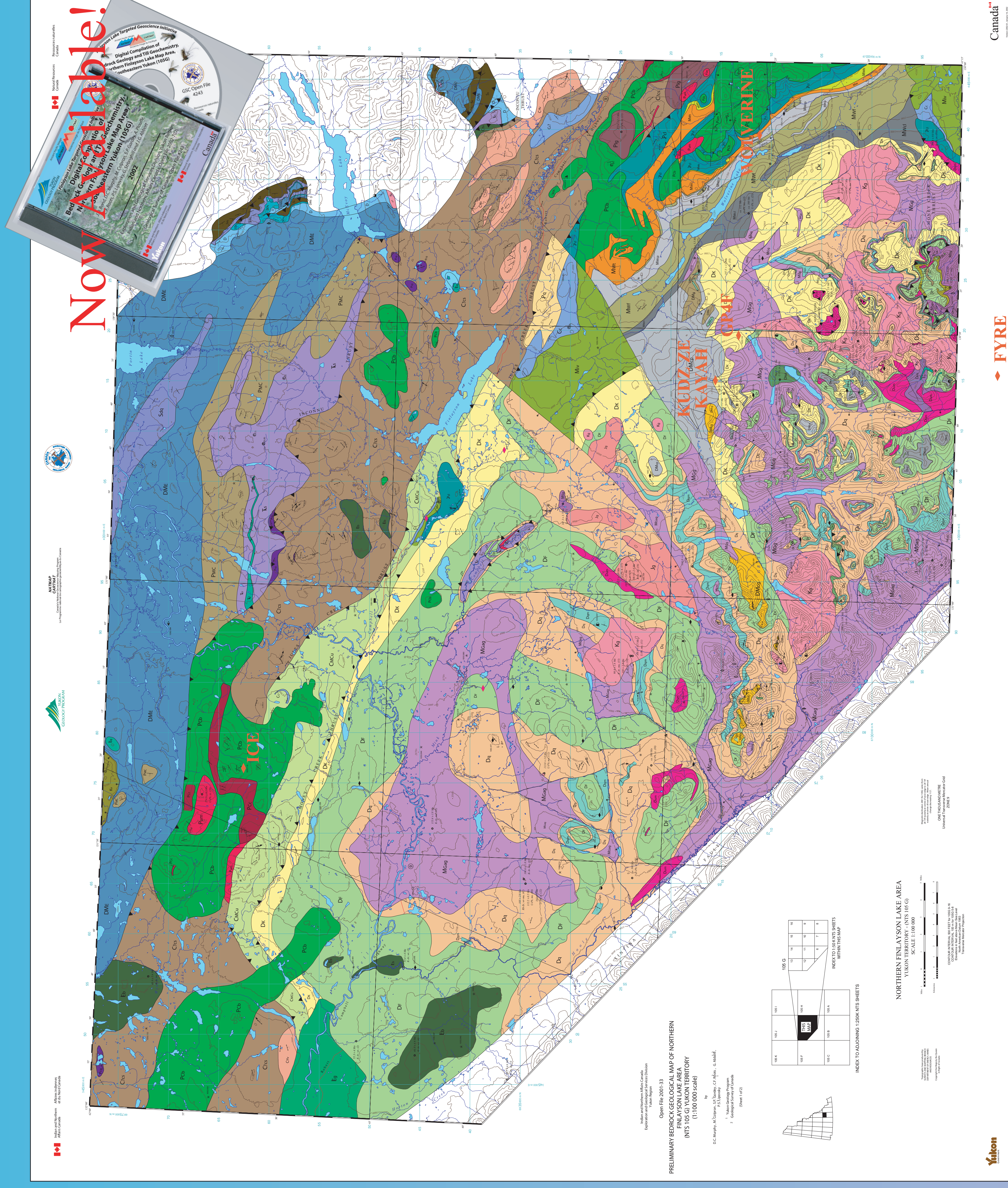
Camp and core, Ice property



Exploration road, Ice property



Pillow basalt, MORB composition



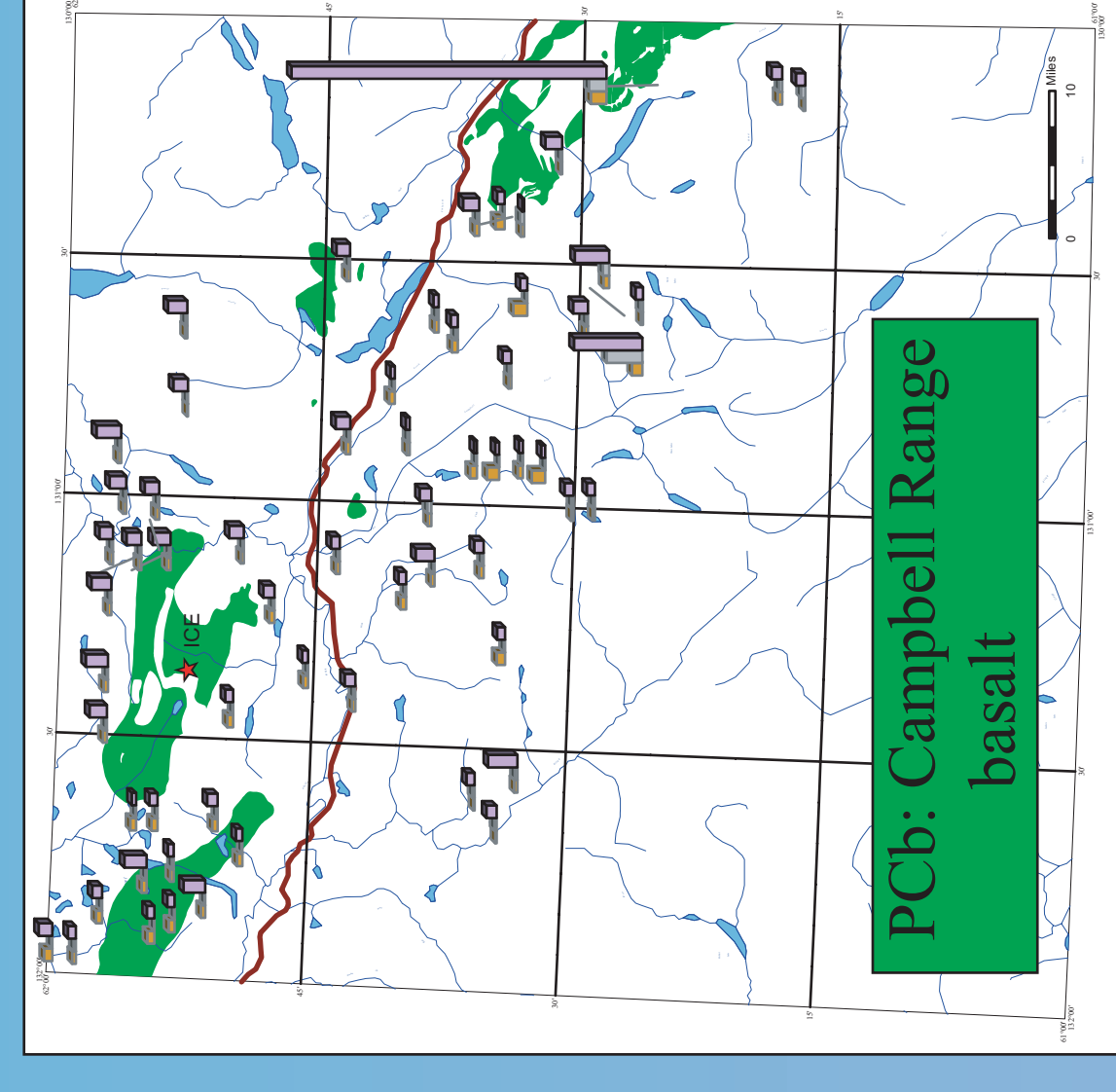
Now Available!

Yukon Government
 Donald C. Murphy
 Yukon Geology Program
 Box 2703 (K-10)
 Whitehorse, Yukon
 Canada Y1A 2C6
 don.murphy@gov.yk.ca

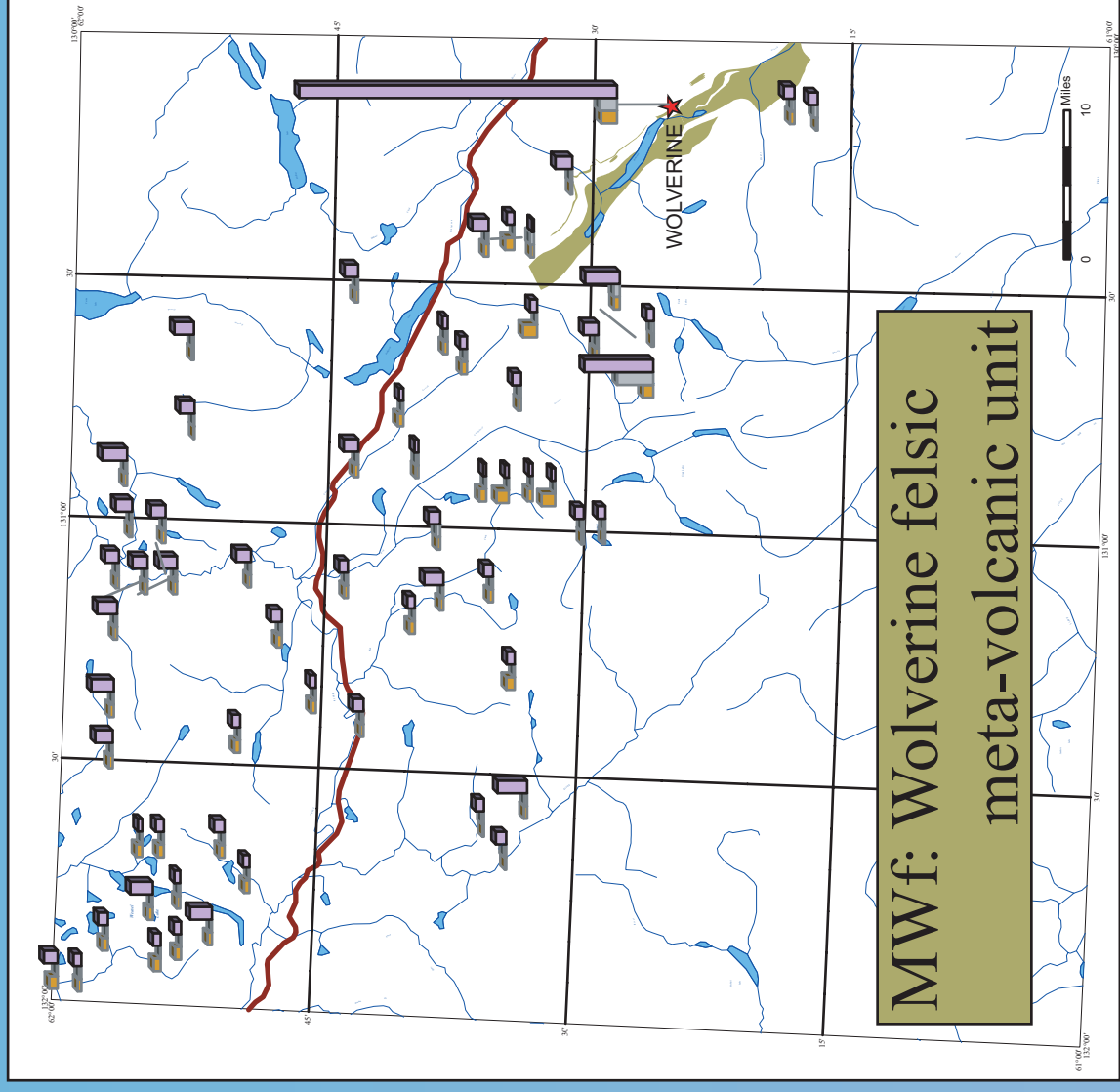
Canada
 Stephen J. Piercey
 Dept. of Earth Sciences
 Laurentian University
 Sudbury, Ontario
 Canada P3E 2C6

Exploration Potential

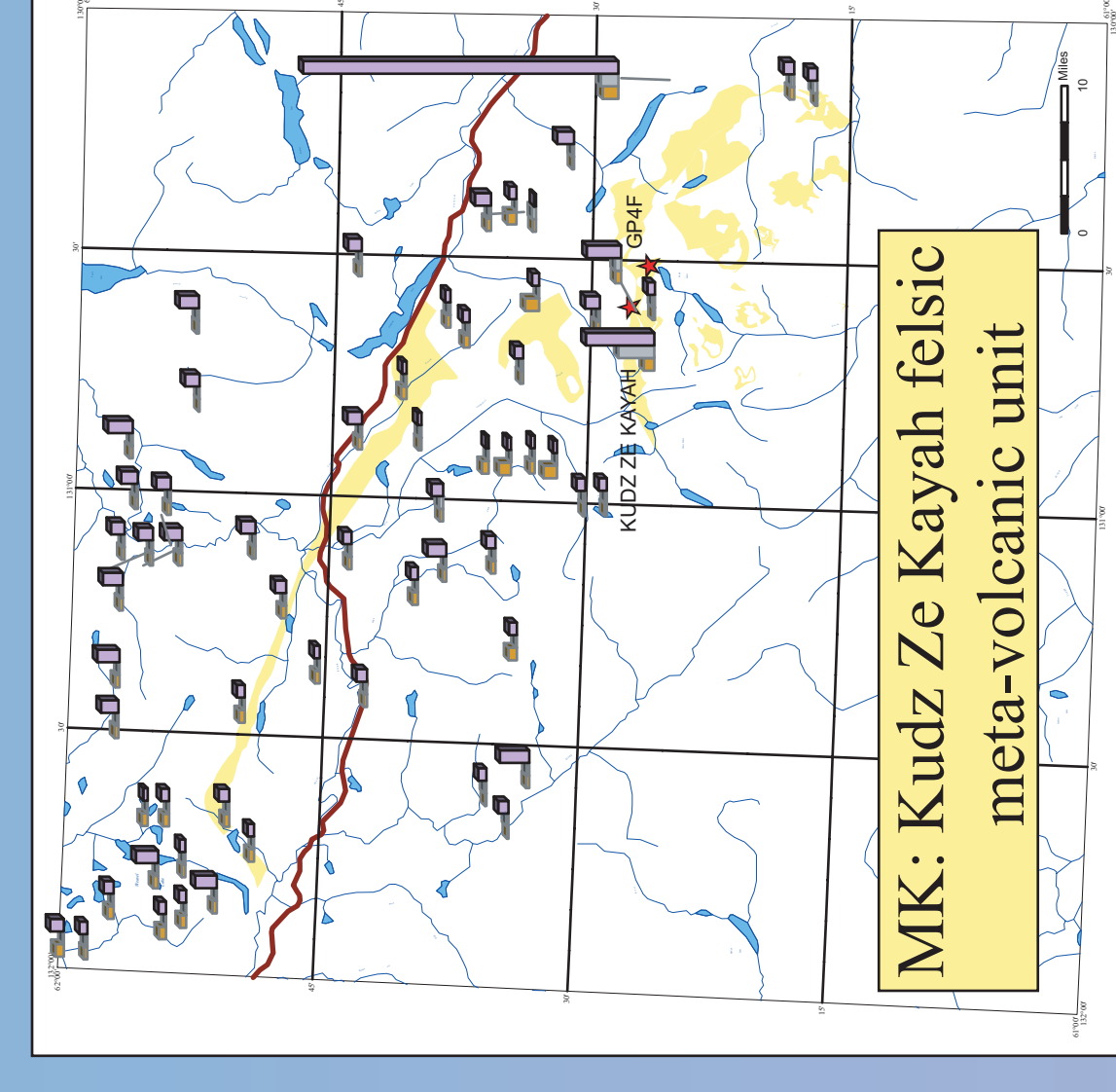
Cu-Pb-Zn Till Geochemistry With Respect to Distribution of Rock Units Hosting Deposits



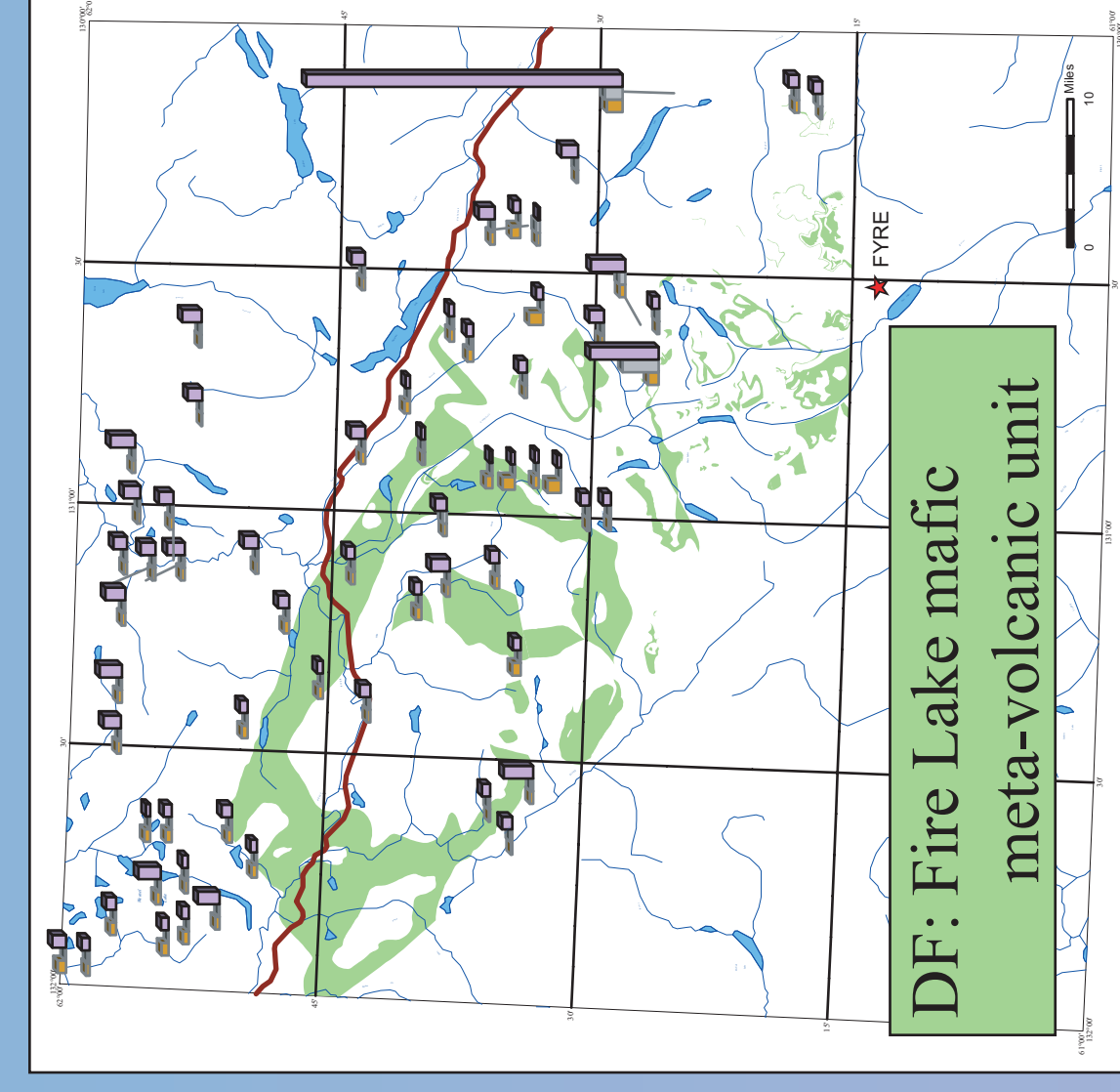
PCb: Campbell Range basalt



MWf: Wolverine felsic meta-volcanic unit



MK: Kuduz Ze Kayah felsic meta-volcanic unit



DF: Fire Lake mafic meta-volcanic unit

Yukon Government
 Maurice Colpron
 Yukon Geology Program
 Box 2703 (K-10)
 Whitehorse, Yukon
 Canada Y1A 2C6
 don.murphy@gov.yk.ca

Canada
 Stephen J. Piercey
 Dept. of Earth Sciences
 Laurentian University
 Sudbury, Ontario
 Canada P3E 2C6