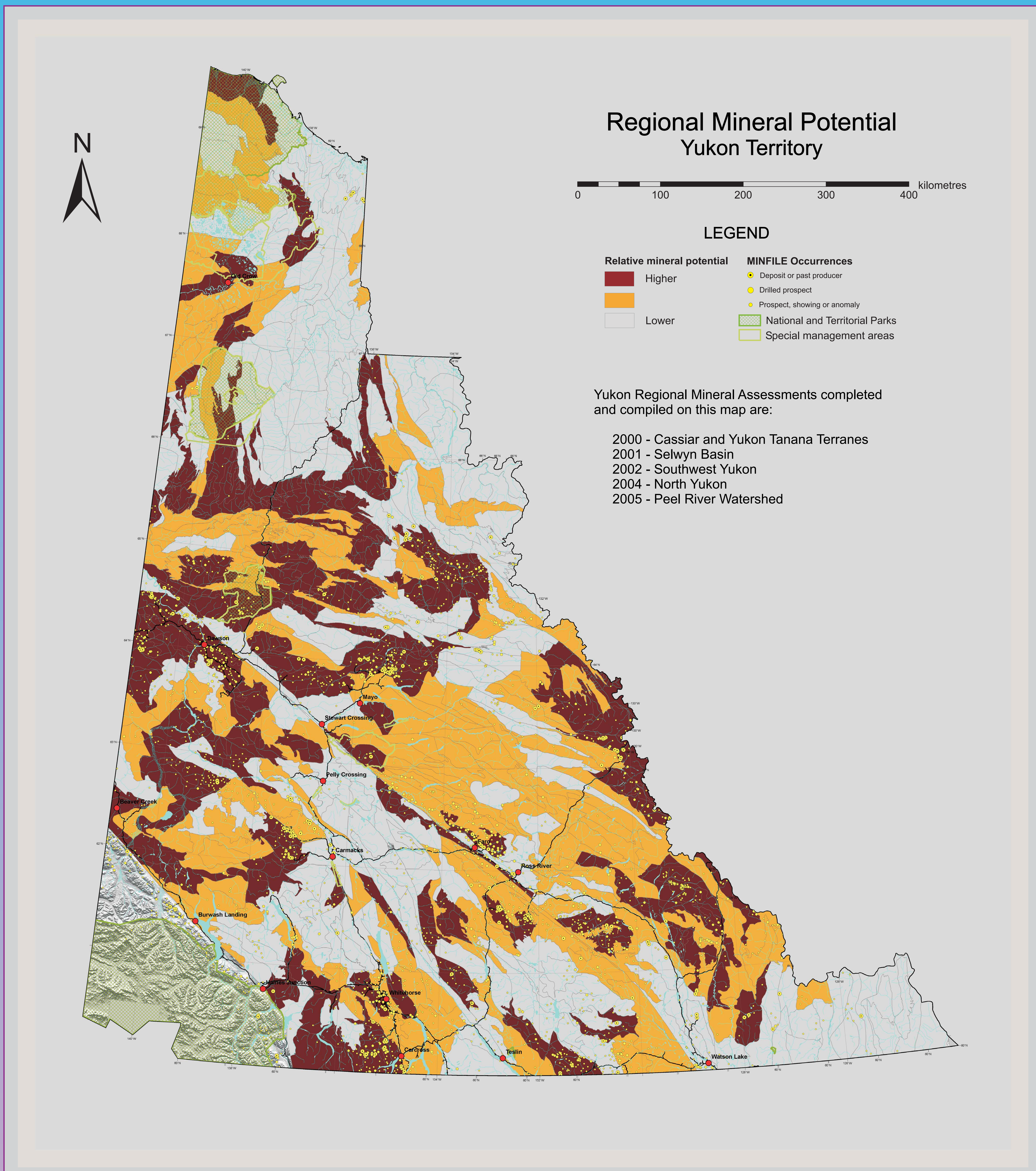




YUKON MINERAL POTENTIAL



What are mineral assessments?

Mineral resource assessments measure the potential for a given tract of land to contain metallic mineral resources.

Assessments rely on probability estimations by a panel of professional geologists and are based on publicly available geoscience data.

There is inherent uncertainty in mineral assessments and they are limited by availability and quality of data.

How do we do resource assessments?

Tracts of similar size are drawn throughout the assessment area with their boundaries based on geological contacts.



All available geological data is compiled and a panel of professional geologists assess the probability of each tract to contain one or more types of mineral deposits.

Acknowledgements

Thanks to the industry geologists who participated in the assessment panels.

For further information contact:

Geoff Bradshaw
Mineral Assessment Geologist
Yukon Geological Survey
P.O. Box 2703, Whitehorse, YT, Y1A 2C6
Tel: (867) 393-7188, Fax: (867) 393-6232
E-mail: geoff.bradshaw@gov.yk.ca
www.geology.gov.yk.ca