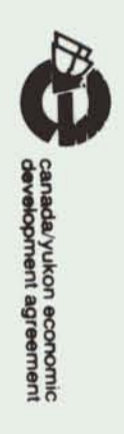


Canada



Yukon

MILITARY MAPS  
 1:50,000 Scale  
 1:50,000 Scale  
 1:50,000 Scale  
 1:50,000 Scale

**LEGEND**

**STRATIFIED ROCKS**

**SYMBOLS**

- Quaternary**
- Q** Alluvium, colluvium, and glacial deposits
- Cambrian to Devonian**
- CDC** Resistant, crudely stratified, light grey weathering dolostone
- Middle to Late Proterozoic**
- Plyguciale Group(?)** Northeast of Bonnet Plume River, grey to maroon, dense to argillaceous lava flows
- EPV** Southwest of Bear River, maroon to green weathering siltstone, maroon weathering quartzite-clast conglomerate, and dark weathering carbonate
- EPs** Middle Proterozoic
- Gilescpie Lake Group**
- EGL** Undivided Gilescpie Lake Group, orange, brown and grey weathering dolostone and siltstone, locally stromatolitic, locally fossiliferous dolostone, locally grey weathering siltstone and fine grained sandstone, locally weathering siltstone and shale, green, grey and brown weathering laminated mudstone, and grey to white weathering quartzose sandstone. Locally developed siltstone cleavage in shaly beds
- EGLm** Southwest of Bear River, brown to black weathering laminated mudstone and shale
- EGLgm** Southwest of Bear River, green, grey and brown weathering laminated mudstone
- EGLs** Black weathering siltstone and shale
- EGLd** Basal Gilescpie Lake Group, cross laminated, orange weathering siltstone and shale, interbedded with weathering siltstone and shale and grey to white weathering quartzose, fine grained sandstone
- Quarrel Group**
- EQ** Black weathering shale, finely laminated dark grey weathering siltstone and planar to cross laminated light grey weathering siltstone and fine grained sandstone. In upper part of carbonate are interbedded with dark grey weathering shale and siltstone, below conformable contact with Quarrel Group. Silty and shaly units locally cleaved and kink banded
- Fairchild Lake Group**
- EFL** Undivided Fairchild Lake Group, green to grey weathering siltstone, fine grained sandstone, and laminated light grey weathering siltstone and shale. In upper part of carbonate are interbedded with dark grey weathering shale and siltstone, below conformable contact with Quarrel Group. Silty and shaly units locally cleaved and kink banded
- EFLC** Grey, brown and white weathering carbonate with minor interbeds of dark siltstone and shale
- EFLS** Black and dark grey weathering shale and siltstone with minor interbeds of carbonate

- INTRUSIVE ROCKS**
- Middle Proterozoic to Mesozoic**
- gr** Fine to medium grained granite to granodiorite; local hydraulic border phase
- g** Fine to medium grained gabbro, diorite and basalt
- Middle to Late Proterozoic**
- Wernicke breccia** Modified red, green and grey weathering hematitic and dolomitic siltstone- and dolostone-clast breccia, and related metasiltstone and metadolostone. Breccia and metasiltstones host copper, uranium, cobalt, silver and gold mineralization

- Mineral Occurrences from Yukon Minifile**
- Wernicke breccia
- Cu and/or U (+/- Co, Au, Mo, Ba, Ag)
- 49 FAGSSTEL
- 52 FOND
- 62 GNDUCKLE
- 70 SLAB
- 75 BLAND
- 76 FACE
- 78 FITCH
- 79 CHERTAN
- 87 SNOWSTAR
- Vein
- Cu (+/- Au, Ag, Pb, Zn, Ba, Mo, W, Co, Ni)
- 47 GRAY
- 48 NEW JERSEY
- 53 SLATS
- 59 ZELON
- Stratobound concordant
- Pb-Zn (+/- Au, Ag, Ba, Cu)
- 74 COHD

**REFERENCES**

BELL, R.T., 1986. Geological map of northeastern Wernicke Mountains, Yukon Territory. Geological Survey of Canada, Open File 1207.

DELANEY, G.D., 1981. The mid-Proterozoic Wernicke Supergroup, Wernicke Mountains, Yukon Territory. In: Proterozoic Basins of Canada, F.H.A. Campbell, (ed.), Geological Survey of Canada Paper 81-10, p.1-23.

ESRBACHER, G.H., 1978. Two major Proterozoic unconformities, Northern Cordillera. In: Current Research, Part A. Geological Survey of Canada, Paper 78-1A, p.53-58.

GREEN, L.H., 1972. Geology of Nash Creek, Larsen Creek, and Dawson Creek map-areas, Yukon Territory. Geological Survey of Canada, Memoir 354, 157 p.

INAC, 1992. Yukon MINIFILE, 1992. Exploration and Geological Services Division, Yukon, Indian and Northern Affairs Canada.

**This map accompanies the following report:**

THORKEISON, D.J. and WALLACE, C.A., 1993. Geological map of Slat Creek (108D16) map area, Wernicke Mountains, Yukon. Exploration and Geological Services Division, Indian and Northern Affairs Canada, Open File 1993-2.

**Recommended citation:**

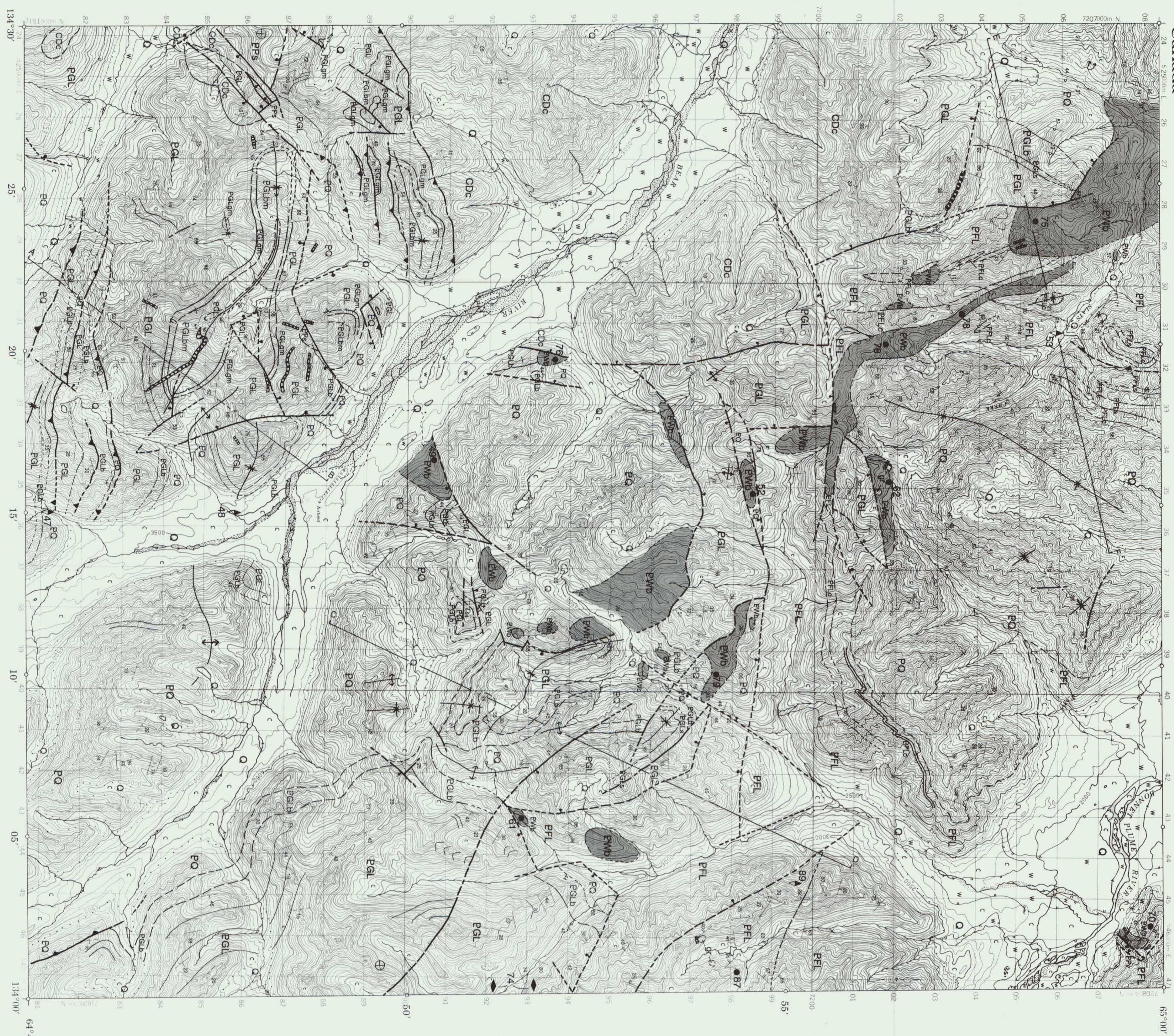
THORKEISON, D.J. and WALLACE, C.A., 1993. Geological map of Slat Creek (108D16) map area, Wernicke Mountains, Yukon. Exploration and Geological Services Division, Indian and Northern Affairs Canada, Open File 1993-2.

**Acknowledgments**

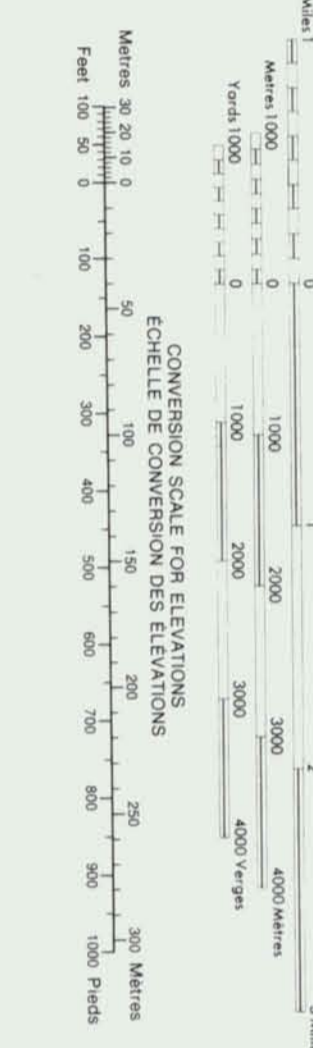
The authors thank Grant Abbott, Don Murphy, Charlie Froos and Steve Johnson for constructive comments, and Will Van Randen for drafting and layout.

Open File 1993-2 (G)  
 Geological Survey of Canada  
 Indian and Northern Affairs Canada  
 Exploration and Geological Services Division  
 Yukon Region

Derek J. Thorkeison and Carol A. Wallace  
 Geological Survey of Canada  
 Canadian/Yukon Mineral Development Agreement  
 Geoscience Office



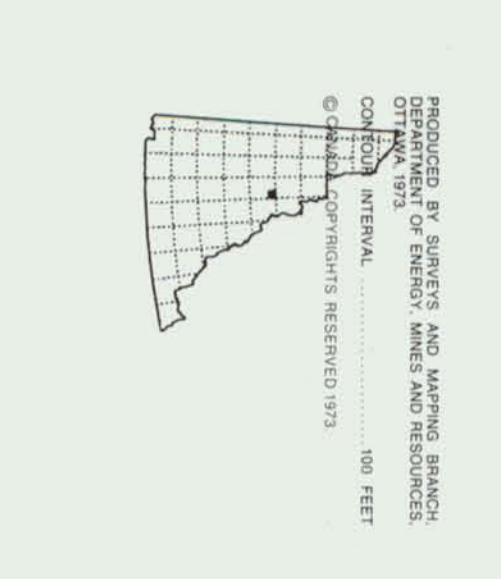
**SLATS CREEK  
 YUKON TERRITORY**



108E 2	108E 1	108E 4
108D 15	108D 16	108C 13
108D 10	108D 9	108C 12

ONE THOUSAND METRE  
 UNIVERSAL TRANSVERSE MERCATOR COORDINATE OF ONE MILE METRES  
 UNITS TRANSVERSE IN METRES

THE GEOGRAPHIC COORDINATES ARE IN UTM ZONE 18N  
 THE UTM ZONE 18N COORDINATE SYSTEM IS USED  
 THE UTM ZONE 18N COORDINATE SYSTEM IS USED  
 THE UTM ZONE 18N COORDINATE SYSTEM IS USED



PRODUCED BY A. HARRIS AND M. HARRIS  
 DESIGN AND LAYOUT BY A. HARRIS  
 CHECKED BY A. HARRIS  
 CHECKED BY A. HARRIS