

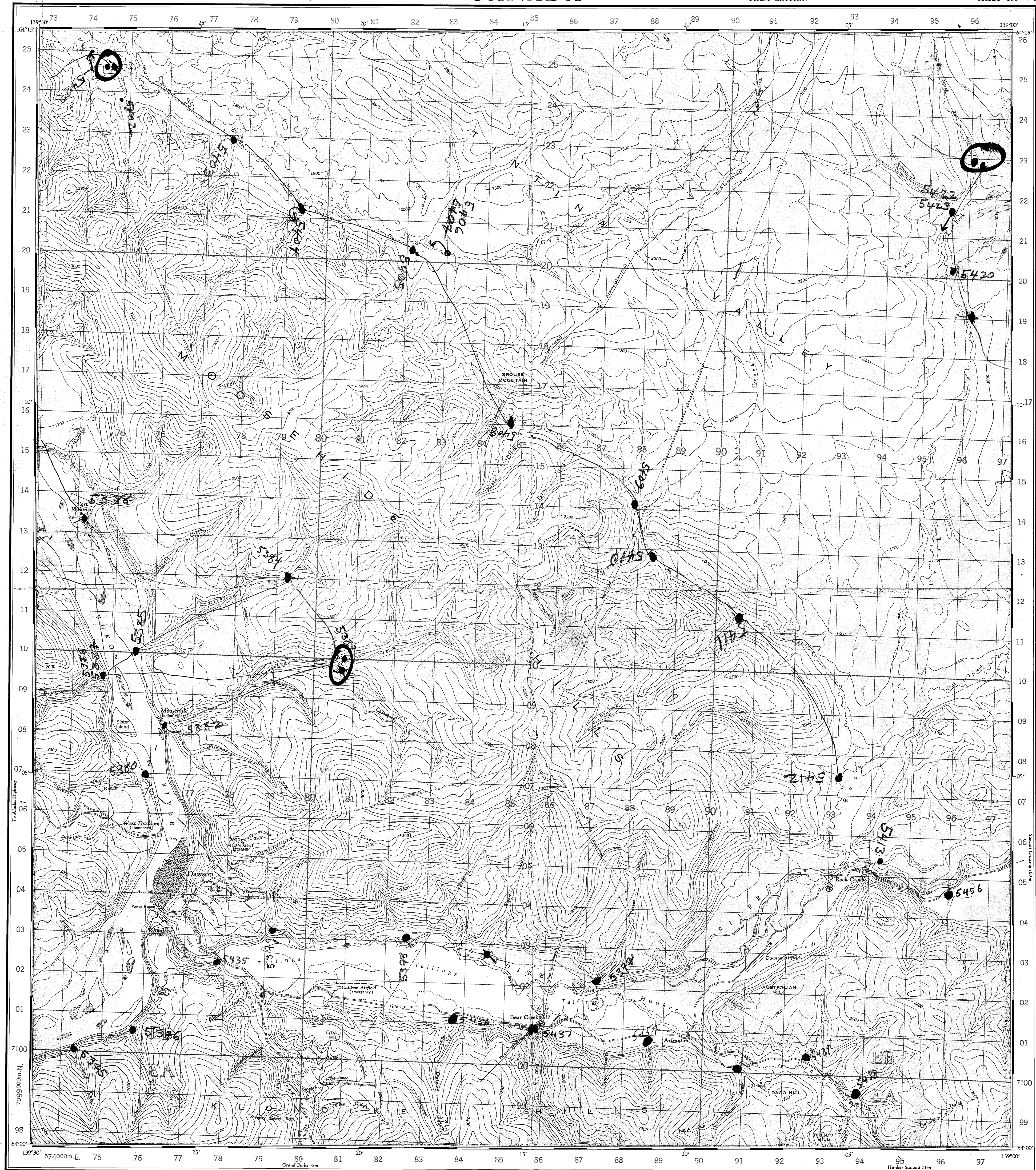
116B/3

NATIONAL TOPOGRAPHIC SYSTEM

1:50,000

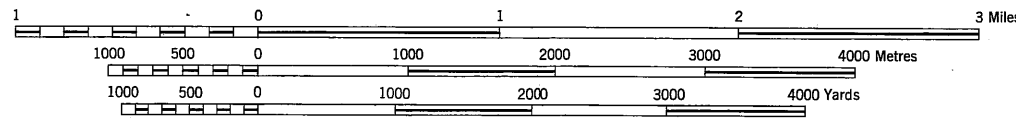
CANADA

FIRST EDITION

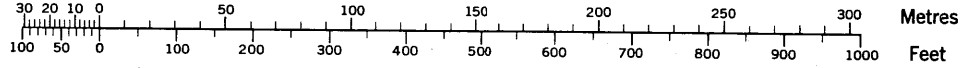
Refer to
this Map as:
116B/3
EDITION 1 ASE
SERIES A 722
SHEET 116 B/3Produced and printed by the SURVEYS AND MAPPING
BRANCH, DEPARTMENT OF MINES AND TECHNICAL
SURVEYS, 1968, from air photographs taken in 1961.MAGNETIC DECLINATION 32° 25' EAST
AT CENTRE OF MAP 1958
Annual magnetic change 3'30" westerlyDAWSON
YUKON TERRITORY

SCALE 1:50,000

1.25 inches to 1 mile approximately

CONTOUR INTERVAL 100 FEET
Elevations in Feet above Mean Sea Level
North American Datum 1927
Universal Transverse Mercator ProjectionCopies may be obtained from the Map Distribution
Office, Department of Mines and Technical Surveys,
Ottawa.

CONVERSION SCALE FOR ELEVATIONS



REFERENCE

Roads:	hard surface, all weather	more than 2 lanes	2 lanes
	hard surface, all weather	less than 2 lanes	
	loose surface, all weather	2 lanes or more	less than 2 lanes
	loose surface, dry weather		
	winter, cart track	Winter road	
	trail or portage		
Railways:	normal gauge, multiple track	Station	Stop
	normal gauge, single track		
	narrow gauge, single track		
	abandoned or under construction		

YUKON NGR SURVEYS

Sample Location Map Scanning Project

SURVEY: DAWSON CK. (1976/77)

NTS MAP AREA: 116B

Map Description: 116B/03 (1 of 1)

Original 1:50 000 scale sample location map,
field traverse copy. Scanned March 2011.

REFERENCE

Mine or Open cut	Historical site
Building, Barn	School, Post Office
Church	Cemetery
Built up area	
Telephone line	
Power transmission line	
Streams:	
intermittent or dry	
indefinite	
Lake intermittent, indefinite	
Inundated land, seasonal	
Marsh or Swamp	
Foreshore flats	
Wharf or Pier, Breakwater	
Rocky reef	
Small island, rock bare or awash	
Contours:	
elevation	
depression	
approximate	
Cliff	
Forest	

116B/03	116B/04	116B/05
116B/06	116B/07	116B/08
116B/09	116B/10	116B/11
116B/12	116B/13	116B/14
116B/15	116B/16	116B/17
116B/18	116B/19	116B/20

INDEX TO ADJOINING SHEETS

DAWSON
116 B/3
EDITION 1 ASE