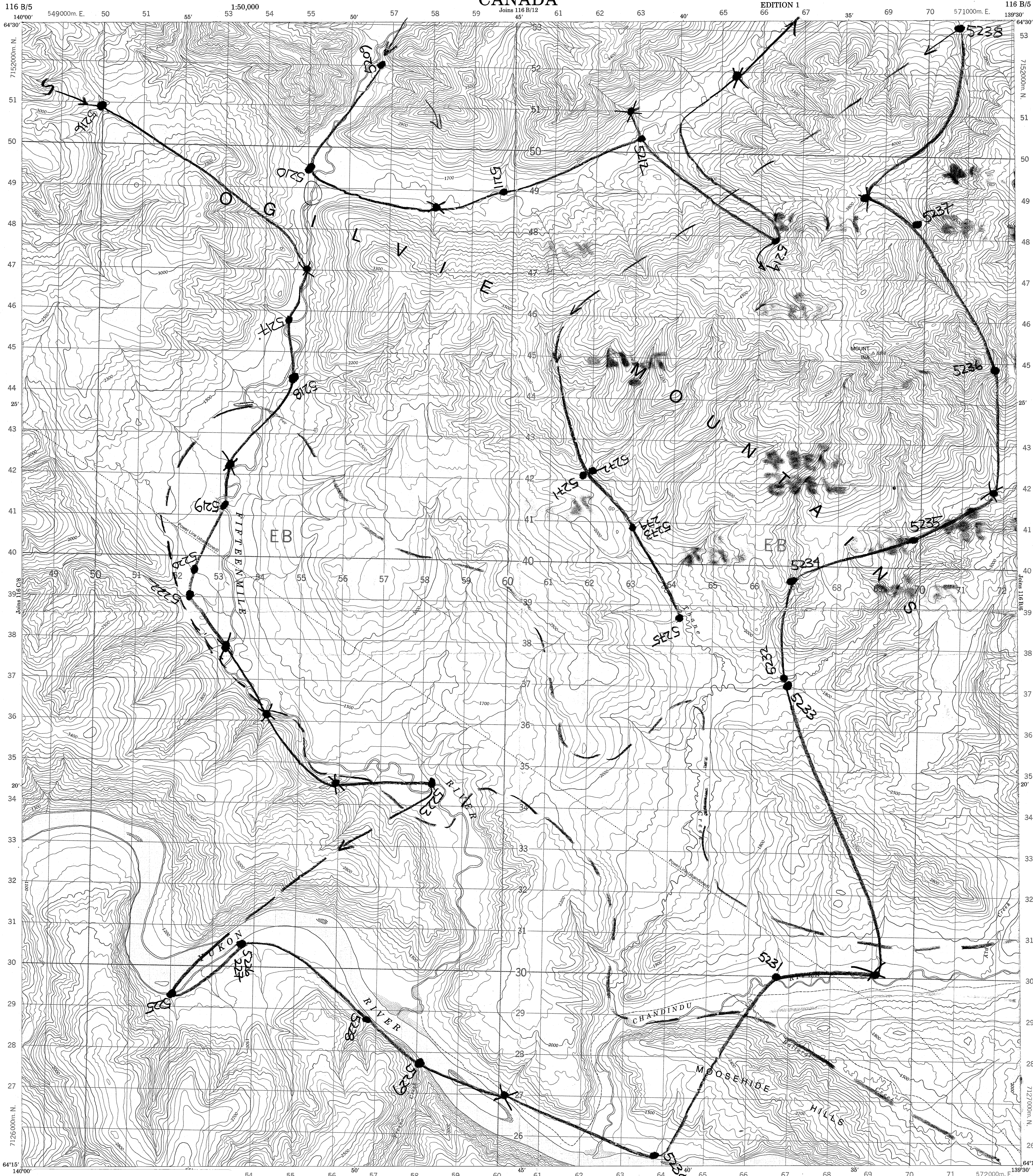


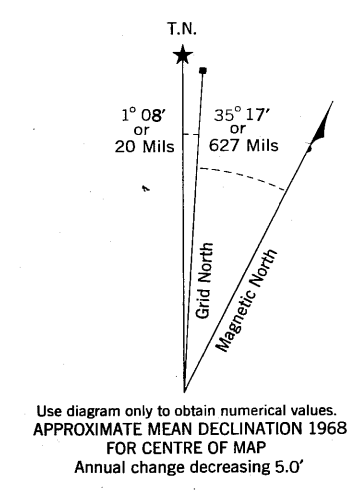
PROVISIONAL MAP
116 B/5

CANADA

CARTE PROVISOIRE
116 B/5

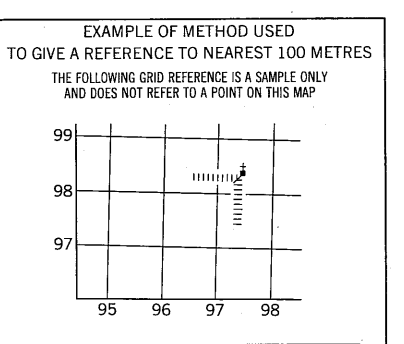


Refer to
this map as:
116 B/5
EDITION 1 MCE
SERIES A 722



ONE THOUSAND METRE
UNIVERSAL TRANSVERSE MERCATOR GRID.

GRID ZONE DESIGNATION	100,000 M. SQUARE IDENTIFICATION
7 W	E B



REFERENCE POINT	CHURCH (see above)
EASTING: Road number on grid line immediately to left of point	97
Estimate tenths of a square from this line eastward to point	5
NORTHING: Road number on grid line immediately below point	98
Estimate tenths of a square from this line northward to point	4
EXAMPLE MILITARY GRID REFERENCE	975083
Nearest similar grid reference	100,000 metres (about 63 miles)

ZONE 7

Produced 1965, by the SURVEYS AND MAPPING
DEPARTMENT OF ENERGY, MINES AND REE
from aerial photographs taken in 1951. Printed 1968.
Copies may be obtained from the Map Distribution C
Department of Energy, Mines and Resources, Ottawa.



YUKON NGR SURVEYS
Sample Location Map Scanning Project

SURVEY: DAWSON CK. (1976/77)

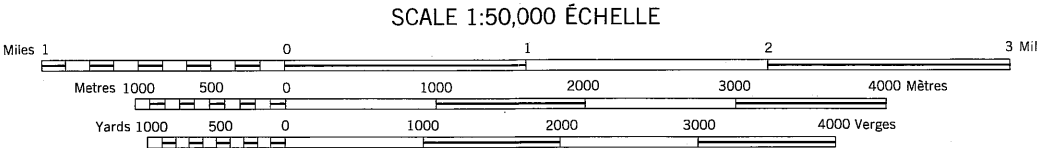
NTS MAP AREA: 116B

Map Description: 116B/05 (1 of 1)

Original 1:50 000 scale sample location map,
field traverse copy. Scanned March 2011.



FIFTEENMILE RIVER
YUKON TERRITORY



CONTOUR INTERVAL 100 FEET
Elevations in feet above Mean Sea Level
North American Datum 1927
Transverse Mercator Projection

Some names on this map are not yet official.
Corrections or additions are invited by the
Survey and Mapping Branch.
This Provisional Map is equivalent to a standard
map in accuracy of content.

ÉQUIDISTANCE DES COURBES: 100 PIEDS
Élevations en pieds au-dessus du niveau moyen de la mer
Niveau de référence nord-américain 1927
Projection transverse de Mercator

Certains noms inscrits sur cette carte ne sont
pas encore officiels. La Direction des levés et
des cartographies se sert d'un public de lui
signaler corrections et additions.
Cette carte provisoire est l'équivalente d'une
carte régulière au point de vue précision de
l'information.

Créée en 1965, par la DIRECTION DES LEVÉS ET DE LA CARTOGRAPHIE,
MINISTÈRE DE L'ÉNERGIE, DES MINES ET DES RESSOURCES, d'après
des photographies aériennes prises en 1951. Imprimée en 1968.

Ces cartes sont en vente au Bureau de distribution des cartes,
ministère de l'énergie, des mines et des ressources, Ottawa.