

116C/1

NATIONAL TOPOGRAPHIC SYSTEM

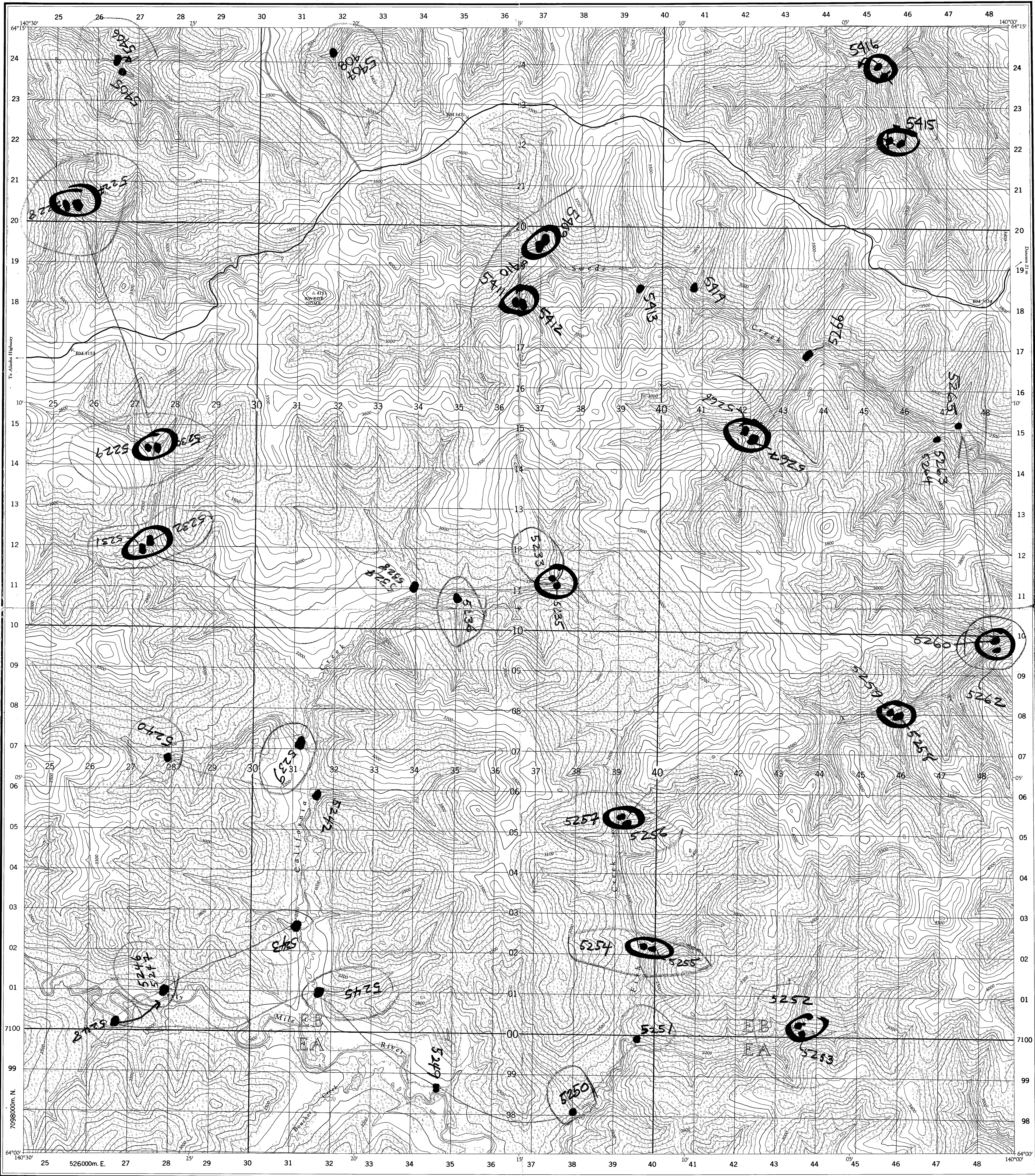
1:50,000

CANADA

FIRST EDITION

PROVISIONAL MAP

Refer to  
this map as:  
116 C/1  
EDITION 1 ASE  
SERIES A 722  
SHEET 116 C/1



Produced and printed by the SURVEYS AND MAPPING  
BRANCH, DEPARTMENT OF MINES AND TECHNICAL  
SURVEYS, 1959, from air photographs taken in 1951.

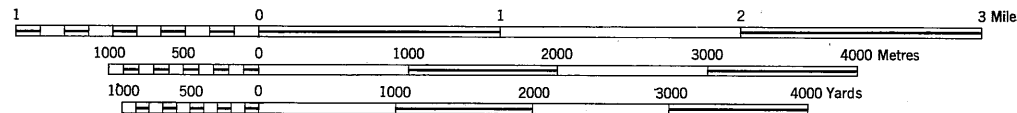
The nomenclature on this map has not been submitted to the Canadian  
Board on Geographical Names and may be subject to revision.

MAGNETIC DECLINATION 31°45' EAST  
AT CENTRE OF MAP 1959  
Annual magnetic change 3°30' westerly

## CALIFORNIA CREEK YUKON TERRITORY

SCALE 1:50,000

1.25 inches to 1 mile approximately



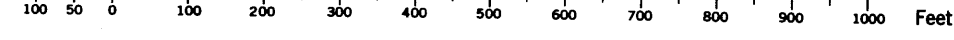
CONTOUR INTERVAL 100 FEET

Elevations in Feet above Mean Sea Level

North American Datum 1927

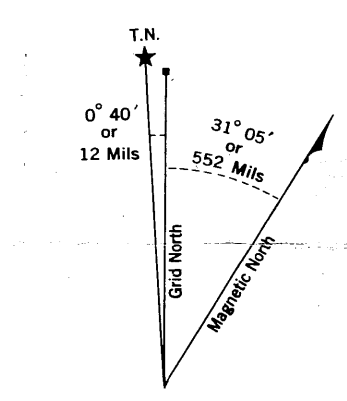
Universal Transverse Mercator Projection

CONVERSION SCALE FOR ELEVATIONS



### REFERENCE

- Power transmission line.....
- Telephone line.....
- Horizontal control point, with elevation..... 454
- Bench mark, with elevation..... BM 157
- Streams:
  - intermittent or dry.....
  - indefinite.....
  - Lake intermittent, indefinite.....
  - flooded land, seasonal.....
  - Marsh or Swamp.....
  - Glacier or Snowfield.....
  - Foreshore flats.....
  - Wharf or Pier; Breakwater.....
  - Rocky reef.....
  - Small island, rock bare or awash.....
- Contours:
  - elevation.....
  - depression.....
  - approximate.....
  - Cliff.....
  - Esker.....
  - Forest.....



Use diagram only to obtain numerical values  
APPROXIMATE MEAN DECLINATION 1959  
FOR CENTRE OF MAP  
Annual change decreasing 3.5°

GRID ZONE  
DESIGNATION  
7 W  
E B  
E A  
710  
TO GIVE A REFERENCE TO NEAREST 100 METRES  
EXAMPLE: STREAM JUNCTION  
EASTING: Road number on grid line  
immediately to left of point  
Estimate tenths of a square from  
this line westward to point.  
NORTHING: Road number on grid line  
immediately below point  
Estimate tenths of a square from  
this line northward to point.  
MILITARY GRID REFERENCE 31 40 86  
Nearest similar grid reference 100,000 metres (about 63 miles)

ONE THOUSAND METRE  
UNIVERSAL TRANSVERSE MERCATOR GRID  
ZONE 7



YUKON NGR SURVEYS  
Sample Location Map Scanning Project

SURVEY: DAWSON CK. (1976/77)

NTS MAP AREA: 116C

Map Description: 116C/01 (1 of 1)

Original 1:50 000 scale sample location map,  
field traverse copy. Scanned March 2011.