

116C/7

NATIONAL TOPOGRAPHIC SYSTEM

1:50,000

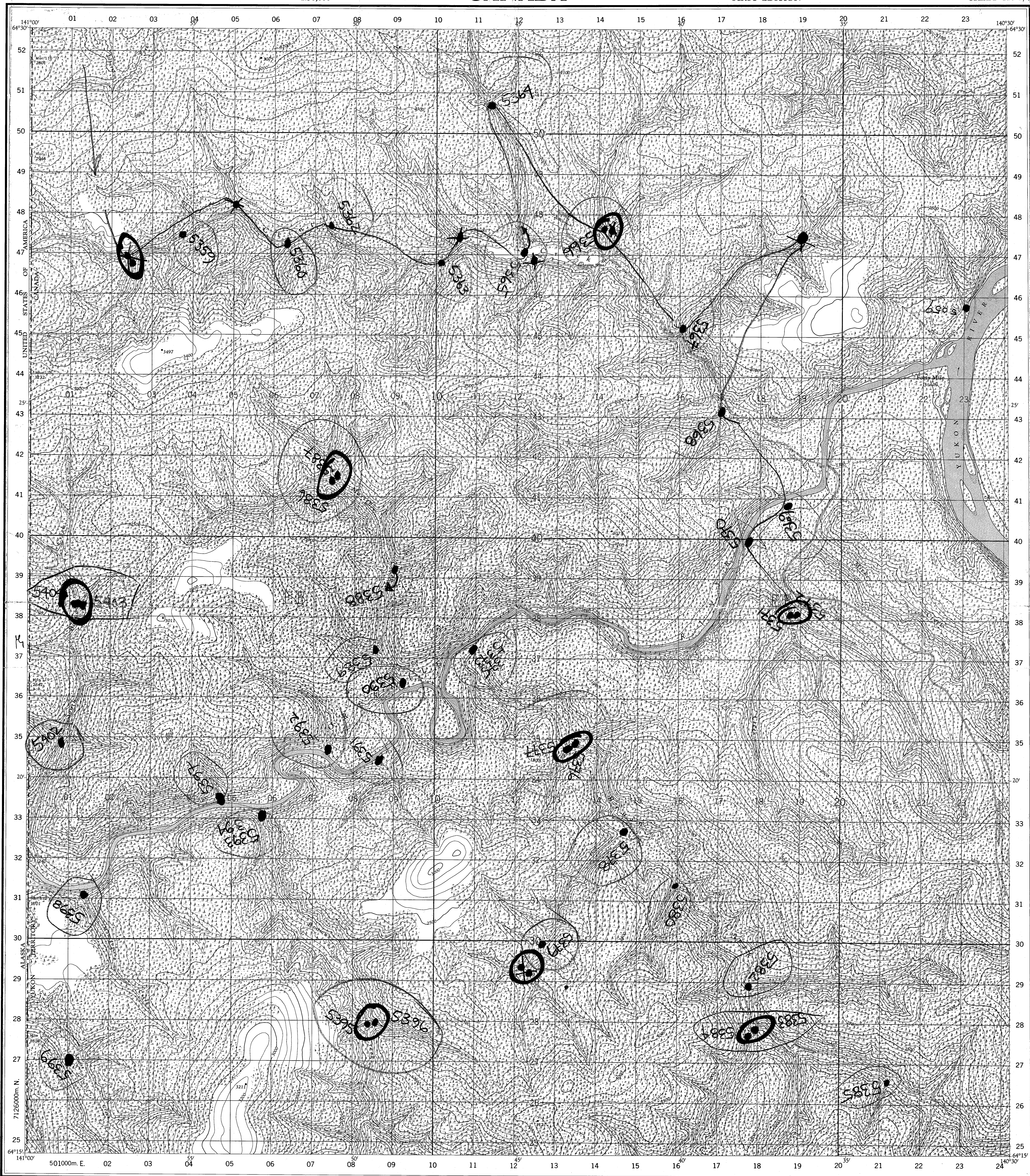
CANADA

FIRST EDITION

PROVISIONAL MAP

SHEET 116C/7

Refer to
this map as:
116 C/7
EDITION 1
SERIES A 722



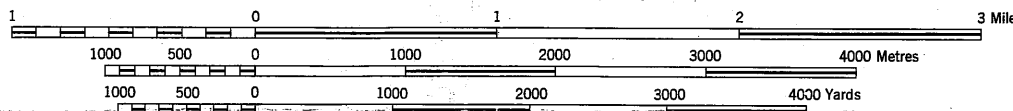
Produced and printed by the SURVEYS AND MAPPING
BRANCH, DEPARTMENT OF MINES AND TECHNICAL
SURVEYS, 1959, from air photographs taken in 1951 and 1953.

The nomenclature on this map has not been submitted to the Canadian
Board on Geographical Names and may be subject to revision.

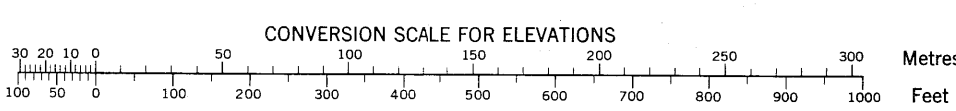
MAGNETIC DECLINATION 31°46' EAST
AT CENTRE OF MAP 1959
Annual magnetic change 3'30" westerly

FORTY MILE YUKON TERRITORY

SCALE 1:50,000
1.25 inches to 1 mile approximately



CONTOUR INTERVAL 100 FEET
Elevations in Feet above Mean Sea Level
North American Datum 1927
Transverse Mercator Projection



GRID ZONE
DESIGNATION
7 W
EB
50
TO GIVE A REFERENCE TO NEAREST 100 METRES
EXAMPLE: BUILDING
EASTING: Read number on grid line
immediately to left of point
Estimate tenths of a square from
this line eastward to point
NORTHING: Read number on grid line
immediately below point
Estimate tenths of a square from
this line northward to point
MILITARY GRID REFERENCE: 141468
Nearest similar grid reference 100,000 metres (about 63 miles)

ONE THOUSAND METRE
UNIVERSAL TRANSVERSE MERCATOR GRID
ZONE 7

REFERENCE
Roads:
all weather
dry weather
winter, cart track
trail, cut line or portage
Railways:
normal gauge, multiple track
normal gauge, single track
abandoned or under construction
Bridges: road, railway
Cutting, Embankment
Boundaries:
Station
Siding
Stop



YUKON NGR SURVEYS
Sample Location Map Scanning Project

SURVEY: DAWSON CK. (1976/77)

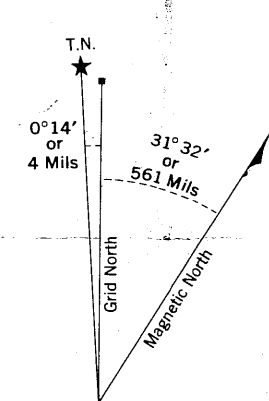
NTS MAP AREA: 116C

Map Description: 116C/07 (1 of 1)

Original 1:50 000 scale sample location map,
field traverse copy. Scanned March 2011.

REFERENCE

Power transmission line
Telephone line
Horizontal control point, with elevation
Bench mark, with elevation
Streams:
intermittent or dry
indefinite
Lake, intermittent, indefinite
flooded land, seasonal
Marsh or Swamp
Glacier or Snowfield
Foreshore flats
Wharf or Pier, Breakwater
Rocky reef
Small island, rock bare or awash
Contours:
elevation
approximate
Cliff
Esker
Forest



116 C/7
EDITION 1