

116C/8

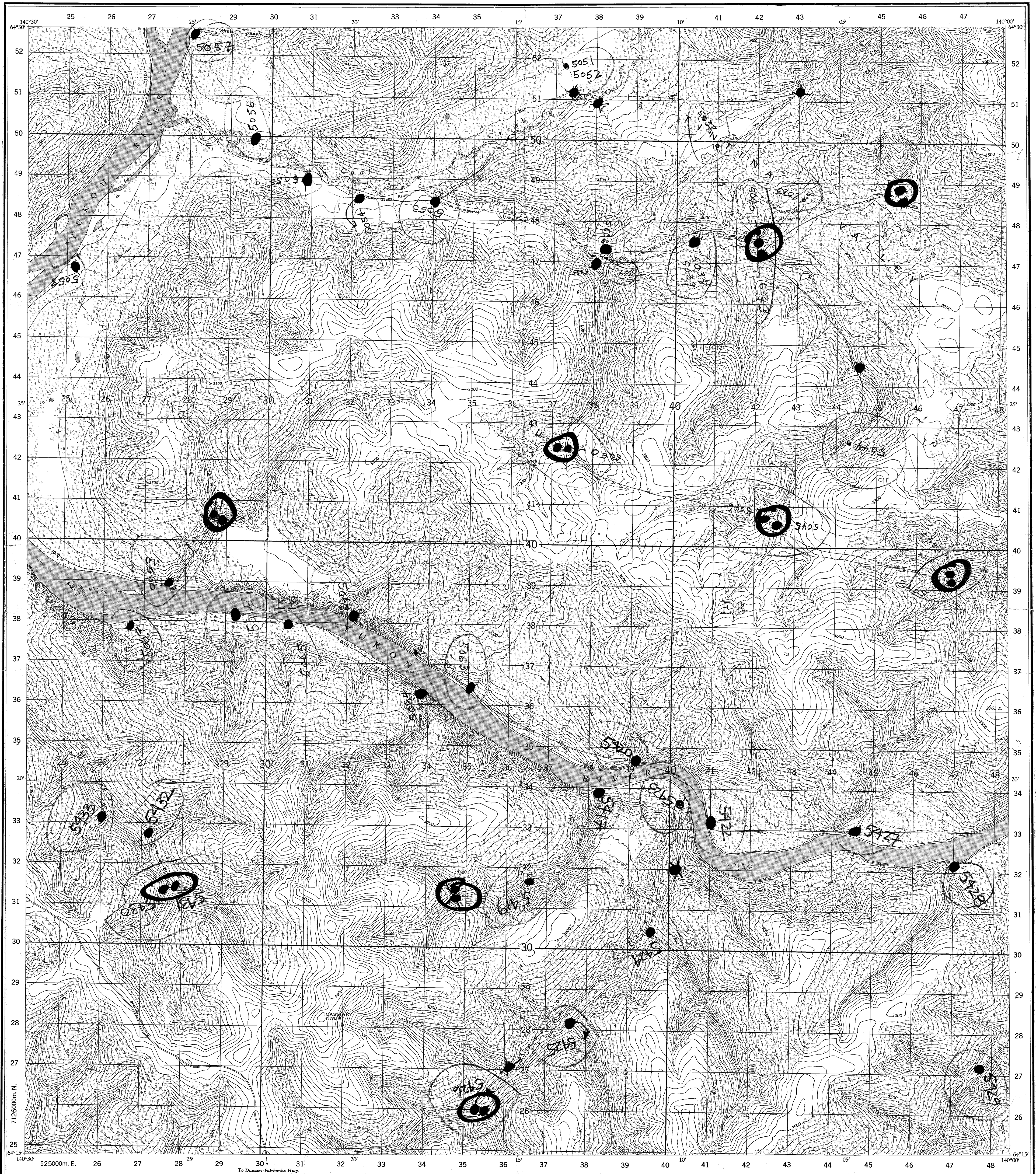
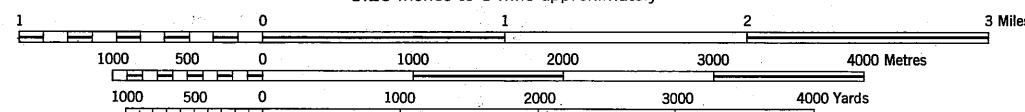
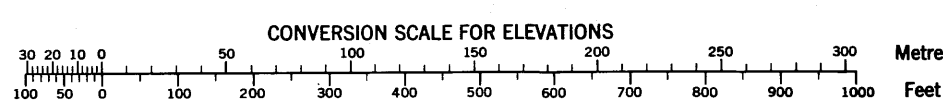
NATIONAL TOPOGRAPHIC SYSTEM

1:50,000

CANADA

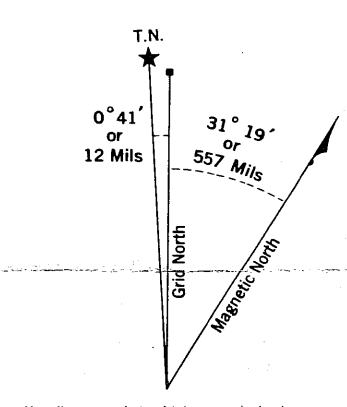
FIRST EDITION

PROVISIONAL MAP

Refer to
this map as:
116 C/8
EDITION 1
SERIES A 722
SHEET 116C/8Produced and printed by the SURVEYS AND MAPPING
BRANCH, DEPARTMENT OF MINES AND TECHNICAL
SURVEYS, 1960, from air photographs taken in 1951 and 1952.The nomenclature on this map has not been submitted to the Canadian
Board on Geographical Names and may be subject to revision.MAGNETIC DECLINATION 32°00' EAST
AT CENTRE OF MAP 1960
Annual magnetic change 3'30" westerlyCASSIAR CREEK
YUKON TERRITORYSCALE 1:50,000
1.25 inches to 1 mile approximatelyCONTOUR INTERVAL 100 FEET
Elevations in Feet above Mean Sea Level
North American Datum 1927
Transverse Mercator Projection

REFERENCE

- Power transmission line
- Telephone line
- Horizontal control point, with elevation
- Bench mark, with elevation
- Streams
- Intermittent or dry
- Indefinite
- Lake intermittent, indefinite
- Inundated land, seasonal
- Marsh or Swamp
- Glacier or Snowfield
- Foreshore flats
- Wharf or Pier, Breakwater
- Dry river bed
- Small island, rock bare or awash
- Contours
- elevation
- depression
- approximate
- Cliff
- Esker
- Forest

Use diagram only to obtain numerical values.
APPROXIMATE MEAN DECLINATION 1960
FOR CENTRE OF MAP
Annual change decreasing 3.5'

100,000 M. SQUARE IDENTIFICATION	
GRID ZONE DESIGNATION	EB
7 W	
TO GIVE A REFERENCE TO NEAREST 100 METRES	
EXAMPLE: BUILDING	
EASTING: Read number on grid line immediately to left of point	27
Estimate tenths of a square from this line (dashed to point)	4
NORTHING: Read number on grid line immediately below point	27.4
Estimate tenths of a square from this line (dashed to point)	50
MILITARY GRID REFERENCE	274501
Nearest similar grid reference 100,000 metres (about 63 mi)	501

ONE THOUSAND METRE
UNIVERSAL TRANSVERSE MERCATOR
ZONE 7YUKON NGR SURVEYS
Sample Location Map Scanning Project

SURVEY: DAWSON CK. (1976/77)

NTS MAP AREA: 116C

Map Description: 116C/08 (1 of 1)

Original 1:50 000 scale sample location map,
field traverse copy. Scanned March 2011.116C/8
EDITION 1