

116F/2

23

7220000m N

21

00'

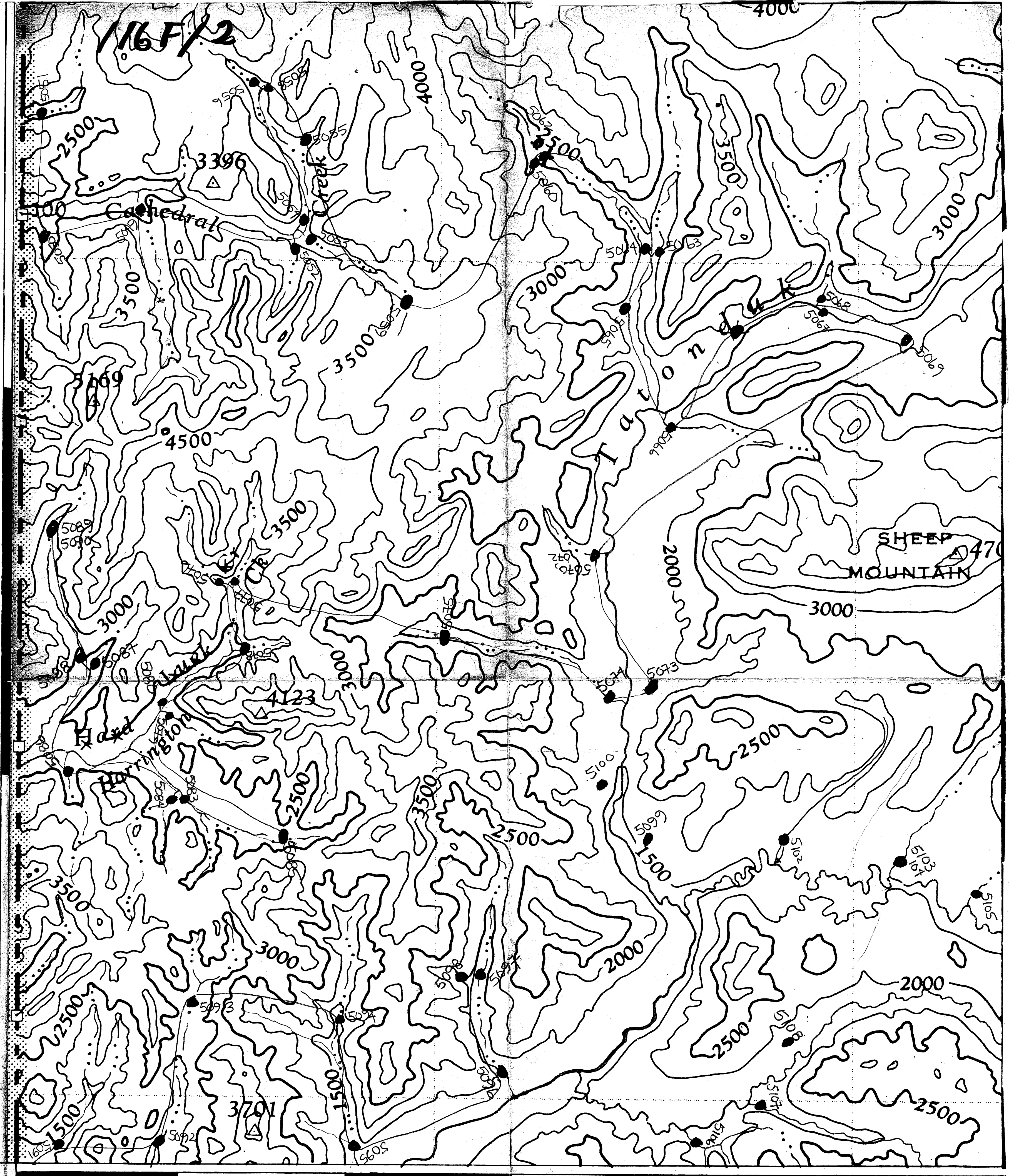
141°

45'

510000m E

52 116F/2

30



YUKON NGR SURVEYS
Sample Location Map Scanning Project

SURVEY: DAWSON CK. (1976/77)

NTS MAP AREA: 116F

Map Description: 116F/02 (1 of 1)

Original 1:50 000 scale sample location map,
field traverse copy. Scanned March 2011.