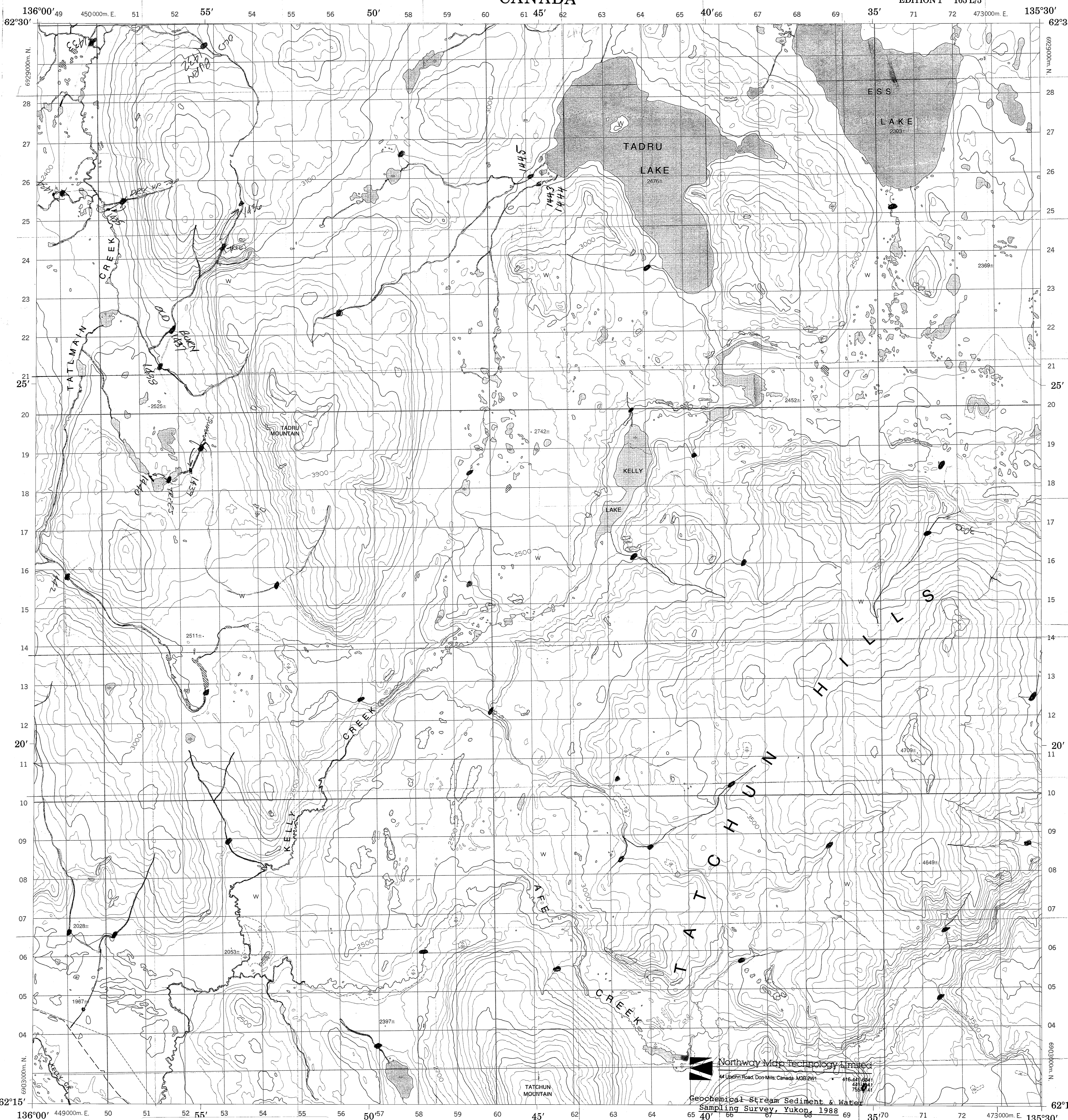


CANADA

EDITION 1 105 L/5



PRODUCED BY SURVEYS AND MAPPING BRANCH  
DEPARTMENT OF ENERGY, MINES AND RESOURCE  
OTTAWA, 1970  
CONTOUR INTERVAL ..... 100 FEET  
© CANADA. COPYRIGHTS RESERVED 1973.



**YUKON NGR SURVEYS**  
**Sample Location Map Scanning Project**

**SURVEY: GLENLYON (1988)**

**NTS MAP AREA: 105L**

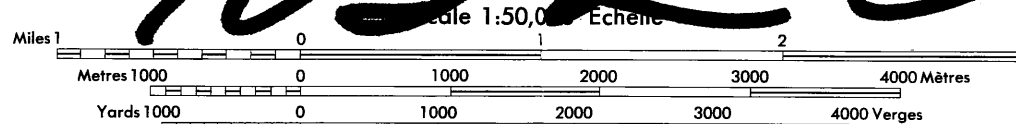
**Map Description: 105L/05 (1 of 2)**

Original 1:50 000 scale sample location map,  
field traverse copy. Scanned March 2011.



**TADRU LAKE**

**105 L/5**



Northway Map Technology Limited  
14 Upjohn Road, Dor Mills, Canada M3B 2W1  
416-441-6941  
225-441-7541

Geochemical Stream Sediment & Water  
Sampling Survey, Yukon, 1988  
Contract Serial No: 345223233-8-02B5

**Legend**  
• Sample Sites  
- Helicopter Access Route  
- Start of Traverse  
- End of Traverse  
- NS Site Visited, No Sample  
- LXX New Sample Series  
- 45 3 Sample Series

115-I/9	105 L/12	105 L/11
115-I/8	105 L/5	105 L/6
115-I/1	105 L/4	105 L/3