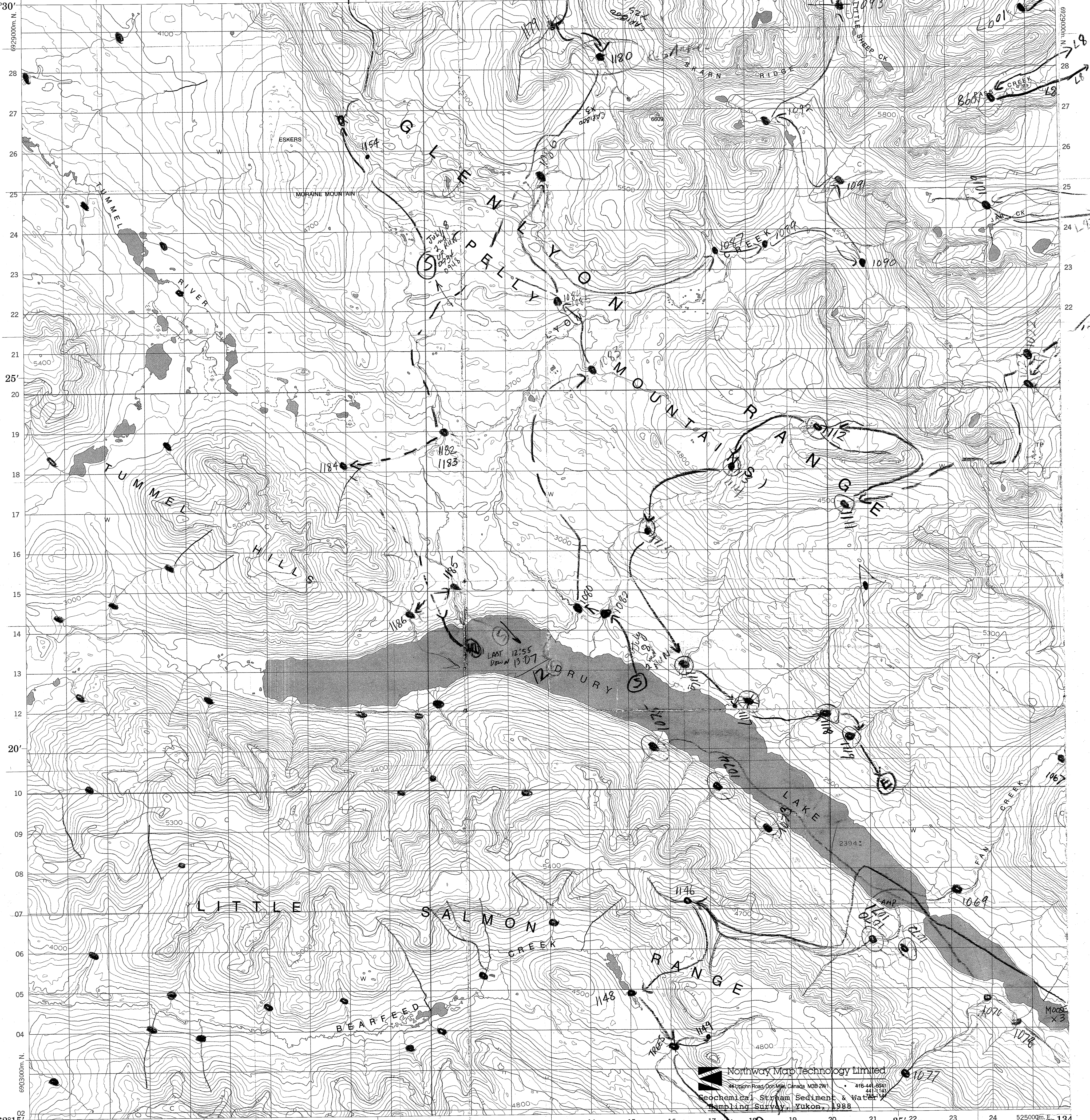


CANADA

EDITION 1 105 L/7

500000m. E.
135°00'

525000m. E.
134°30'



62°15'
135°00'

525000m. E.
134°30'

PRODUCED BY SURVEYS AND MAPPING BRANCH,
DEPARTMENT OF ENERGY, MINES AND RESOURCES,
OTTAWA, 1970.
CONTOUR INTERVAL 100 FEET
© CANADA COPYRIGHTS RESERVED 1973.



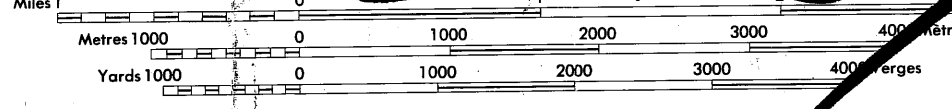
YUKON NGR SURVEYS
Sample Location Map Scanning Project

SURVEY: GLENLYON (1988)
NTS MAP AREA: 105L

Map Description: 105L/07 (1 of 2)
Original 1:50 000 scale sample location map,
field traverse copy. Scanned March 2011.

DRURY LAKE

YUKON TERRITORY



Northway Map Technology Limited
24 Lough Road, Don Mills, Canada M3B 2W1
416-441-2941
Geochemical, Stream Sediment & Water
Sampling Survey, Yukon, 1988

Legend
Sample Site
Helicopter Traverse Route
Start of Traverse
End of Traverse
Site Visited
Sample Series
Sample Series

105 L/11	105 L/10	105 L/9
105 L/6	105 L/7	105 L/8
105 L/3	105 L/2	105 L/1