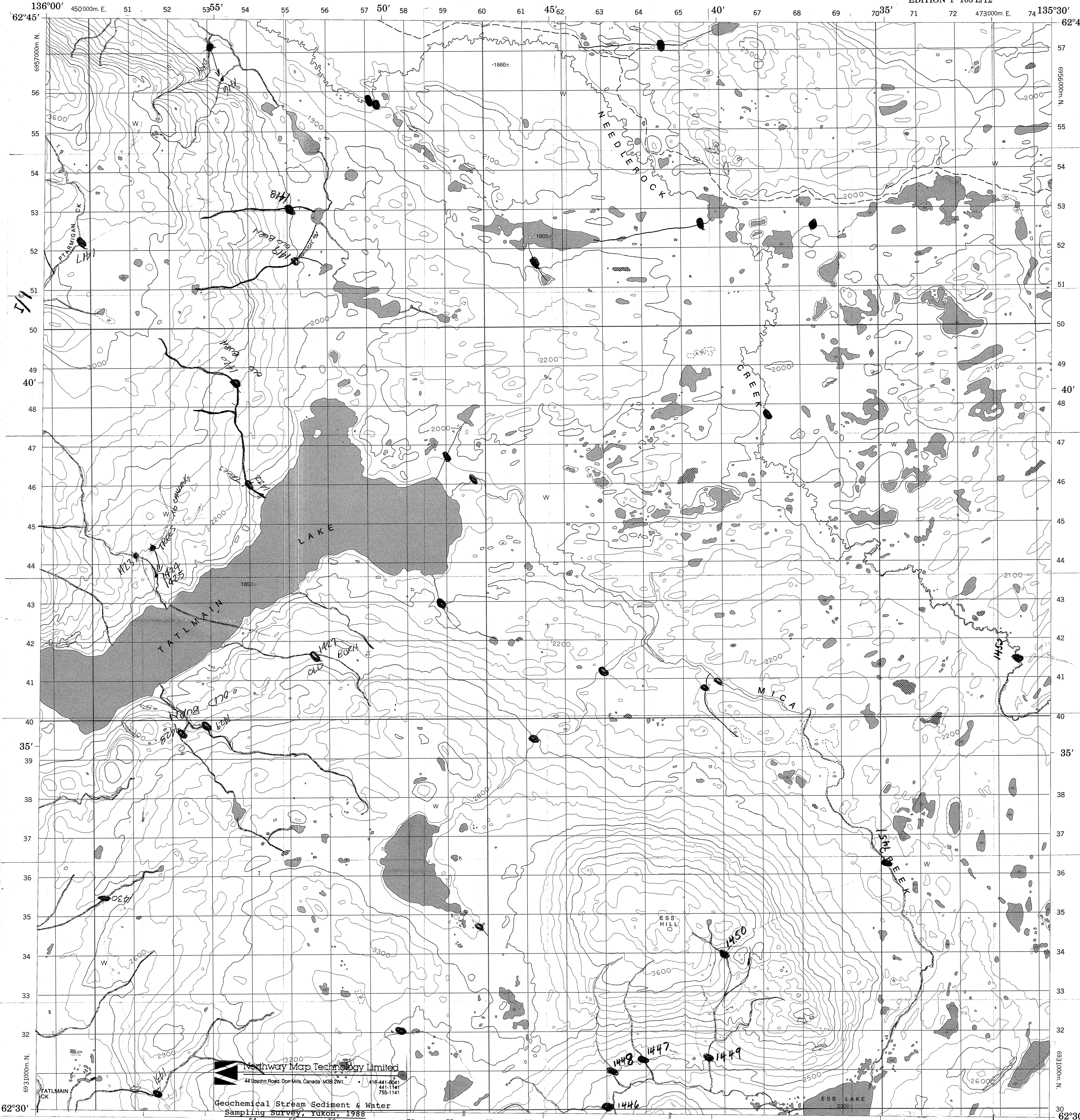


CANADA

EDITION 1 105 L/12



YUKON NGR SURVEYS
Sample Location Map Scanning Project

SURVEY: GLENLYON (1988)

NTS MAP AREA: 105L

Map Description: 105L/12 (1 of 2)

Original 1:50 000 scale sample location map,
field traverse copy. Scanned March 2011.

Contract Serial No: 345223233-8-0285

Legend

— Helicopter Traverse Route

S State of Traverse

E End of Traverse

NS Site Visited, No Sample

1xxx Crew 1 Sample Series

3xxx Crew 3 Sample Series

TATLMAIN LAKE

105 L/12

Scale 1:50,000

Metres 1000 0 1000 2000 3000 4000 Metres

Yards 1000 0 1000 2000 3000 4000 Yards

Northway Map Technology Limited
44 Upjohn Road, Dor Mills, Canada M3B 2W1
416-441-1241
441-1141
755-1141

Geochemical Stream Sediment & Water
Sampling Survey, Yukon, 1988

These maps are available at the Bureau des Cartes du Canada,
ministère de l'Énergie, des Mines et des Ressources, Ottawa,
ou chez le vendeur le plus près.

SYSTÈME DE RÉFÉRENCE GÉODÉSIQUE NORD-AMÉRICAIN 1927

PROJECTION TRANSVERSE DE MERCATOR

115-I/16 105 L/13 105 L/14

115-I/9 105 L/12 105 L/11

115-I/8 105 L/5 105 L/6