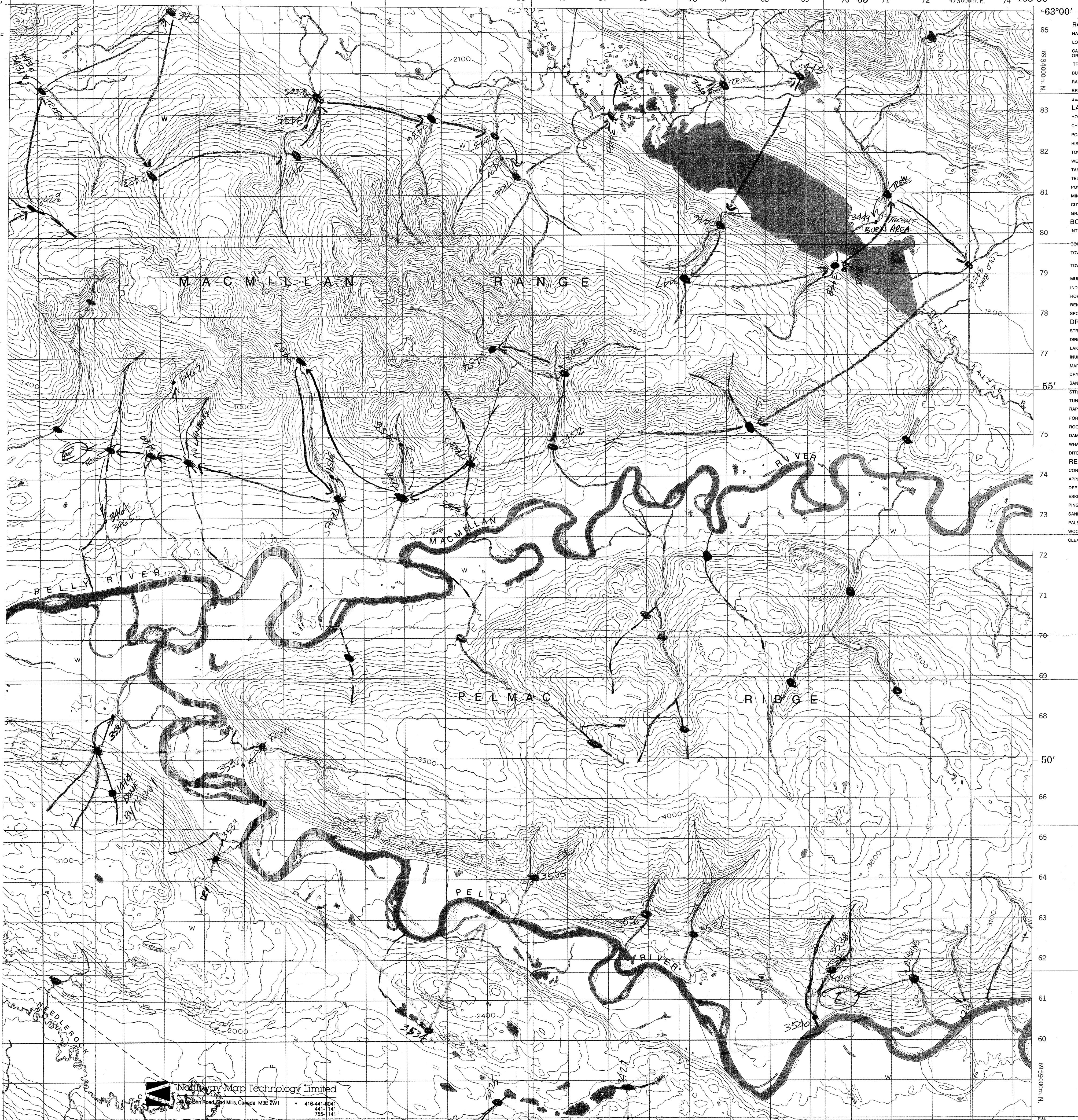


63°00' 63 64 65 66 67 68 69 70 71 72 73 74  
63 64 65 66 67 68 69 70 71 72 73 74  
47300m. E.  
63 64 65 66 67 68 69 70 71 72 73 74



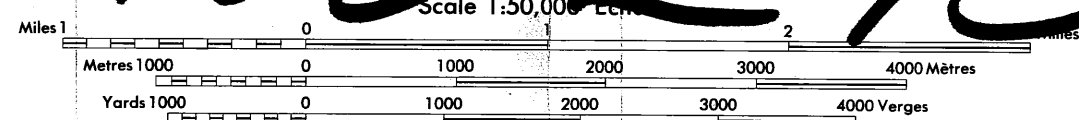
**Northway Map Technology Limited**  
 140 John Road, Don Mills, Canada M3B 2W1  
 • 416-441-8041  
 441-1141  
 755-1141

Geochemical Stream Sediment & Water  
Sampling Survey, Yukon, 1988  
Contract Serial No: 3452-23233-8-02

15-12-1953  
Legend  
 Sample Site  
 COPIES MAY BE OBTAINED FROM THE MAP DISTRIBUTION CENTER OF THE ARMY AIR FORCE AND AIR NAVY  
 Start of Traverse  
 End of Traverse  
 TRANSFORMATOR PROJECTION  
 Site Visited, No Sample  
 Crew 1 Sample Series  
 Crew 3 Sample Series

~~LITTLE KALZAS LAKE~~  
~~YUKON TERRITORY~~

Scale 1:50,000



**YUKON NGR SURVEYS**  
***Sample Location Map Scanning Project***

**SURVEY: GLENLYON (1988)**

NTS MAP AREA: 105L

**Map Description: 105L/13 (2 of 2)**

Original 1:50 000 scale sample location map,  
field traverse copy. Scanned March 2011.

115 P/1	105 M/4	105 M/3
115-I/16	105 L/13	105 L/14
115-I/9	105 L/12	105 L/11