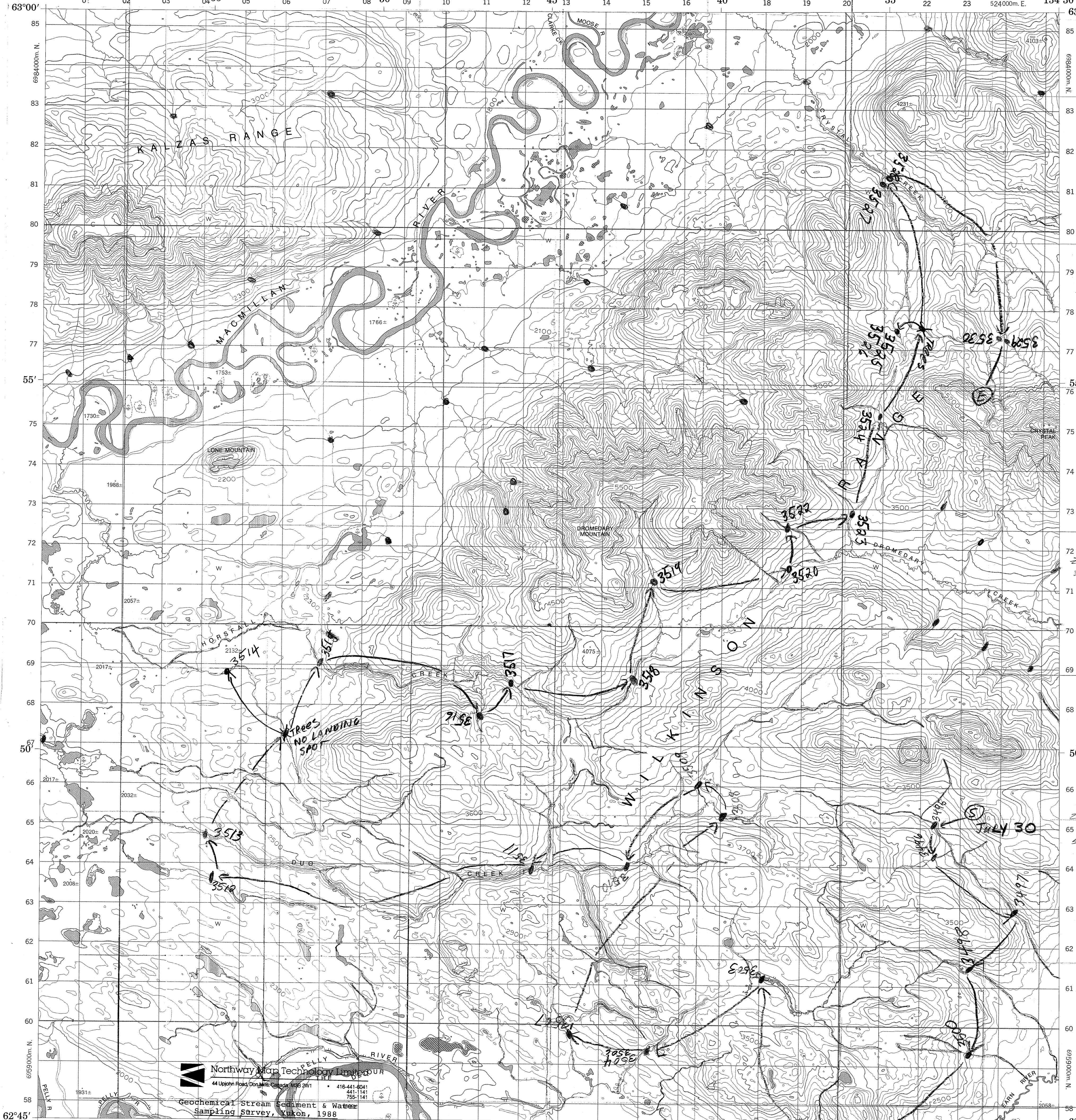


CANADA

EDITION 1 105 L/15

500000m. E.
135°00'

134°30'



Northway Map Technology Limited
44 Upjohn Road, Don Mills, Canada M3B 2W1
416-441-4041
441-1141
755-1141
Geochemical Stream Sediment & Water
Sampling Survey, Yukon, 1988

Contract Serial No: 6452.23233-8-0285
Legend

Sample Site
Helicopter Traverse Route
Start of Traverse
End of Traverse
Site Visited, No Sample
Crew 1 Sample Series
Crew 3 Sample Series

DROMEDARY MOUNTAIN
YUKON TERRITORY
Scale 1:50,000
Metres 1000 0 1000 2000 3000 4000
Yards 1000 0 1000 2000 3000 4000

YUKON NGR SURVEYS
Sample Location Map Scanning Project
SURVEY: GLENLYON (1988)
NTS MAP AREA: 105L
Map Description: 105L/15 (2 of 2)
Original 1:50 000 scale sample location map,
field traverse copy. Scanned March 2011.

105 M/3	105 M/2	105 M/1
105 L/14	105 L/15	105 L/16
105 L/11	105 L/10	105 L/9

PRODUCED BY SURVEYS AND MAPPING BRANCH,
DEPARTMENT OF ENERGY, MINES AND RESOURCES,
OTTAWA, 1970.
CONTOUR INTERVAL 100 FEET
© CANADA COPYRIGHTS RESERVED 1973.

CREW 3