

Refer to
this map as:
115P/11
EDITION 1
SERIES A 722

115P/11

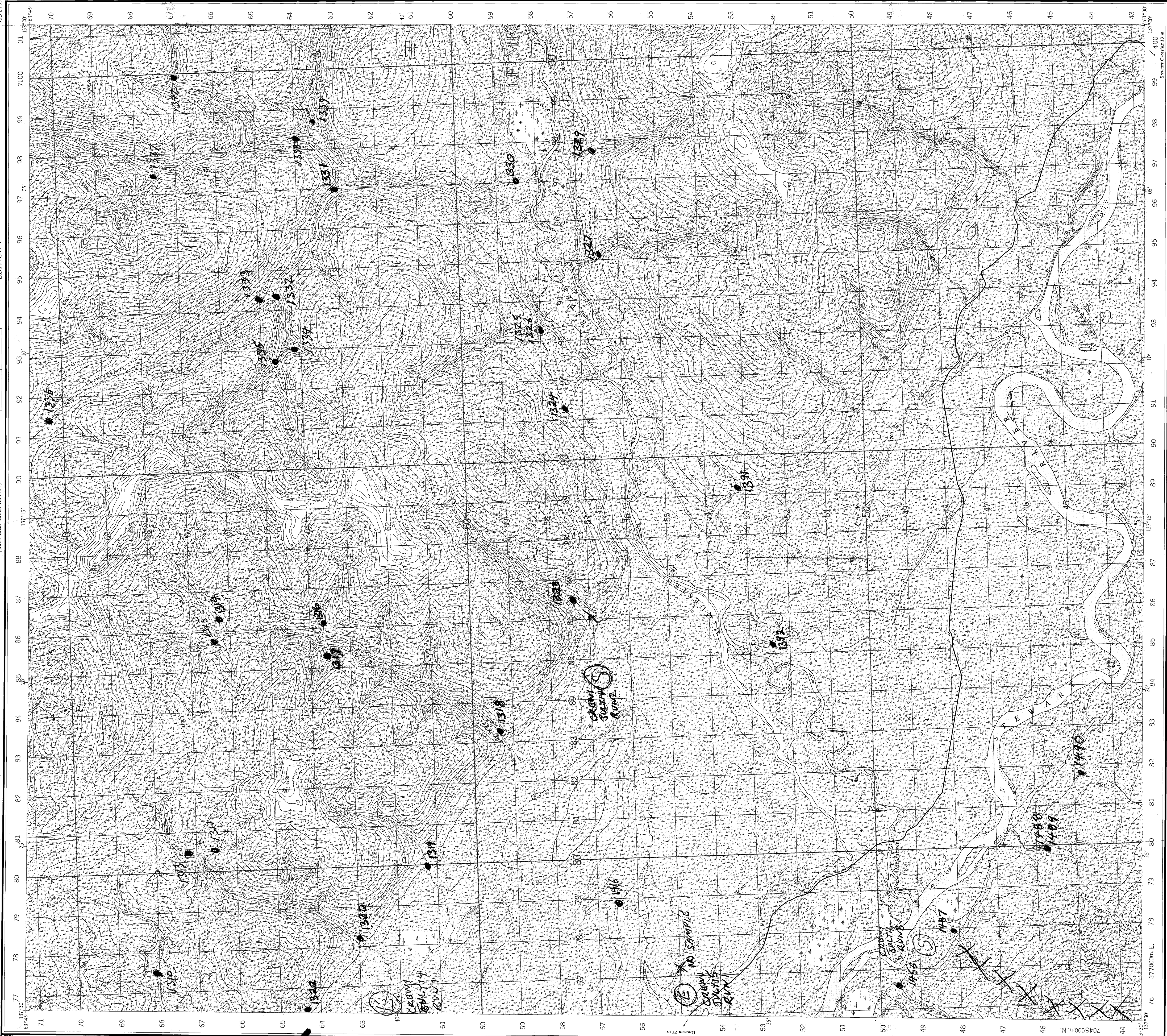
EDITION 1

1:50,000

115P/11

(Joins Gravel Creek 115P/12)

(Joins Moose Creek 115P/10)



Produced and printed by the SURVEYS AND MAPPING
BRANCH, DEPARTMENT OF MINES AND TECHNICAL
SURVEYS, CANADA, 1987, from air photographs taken in 1949 and
1953.

Copyright is retained by the Map Distribution Office,
Department of Energy, Mines and Resources, Ottawa.

McQUESTEN YUKON TERRITORY

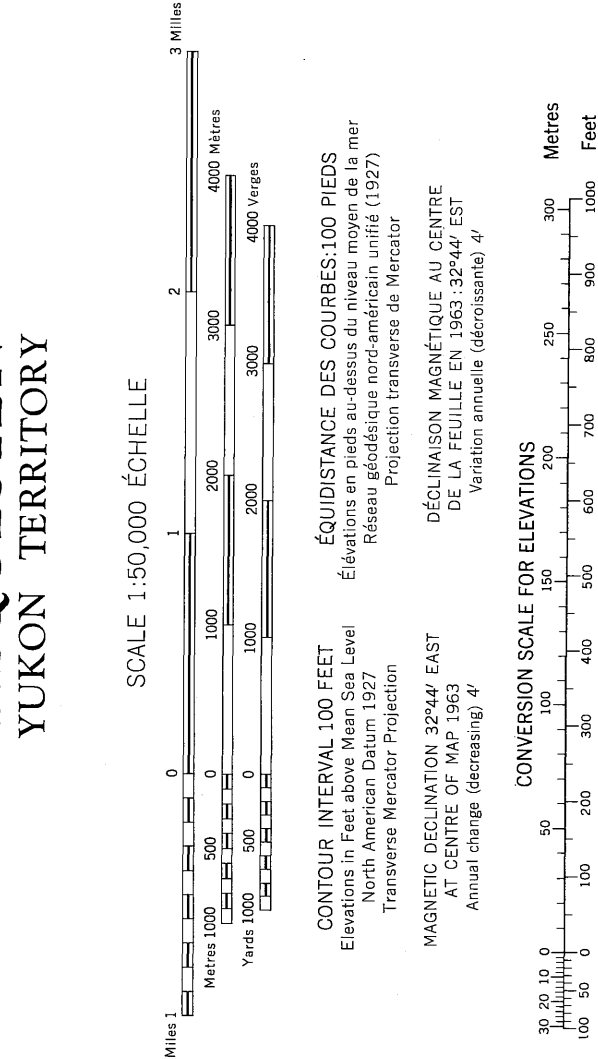
(Joins Red Lakes 115P/6)

Scale of map in metres: Bureau des distributions de cartes
LAUSANNE, SUISSE, 1987
RELEVÉS TECHNIQUES en 1963, d'après les photographies
aériennes prises en 1949 et 1953.

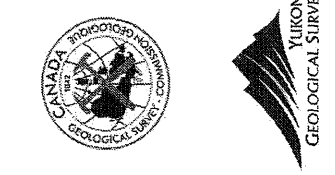
GRID ZONE DESIGNATION	100,000 M. SQUARE IDENTIFICATION
8V	

TO GET A REFERENCE TO NEAREST 100 METRES	
EXAMPLE: STREAM JUNCTION	
NOTE: Read number on grid line	
Estimate number of 100 metres from this line nearest to point.	
EXAMPLE: Read number on grid line	
Estimate number of 100 metres from this line nearest to point.	
EXAMPLE: Read number on grid line	
Estimate number of 100 metres from this line nearest to point.	

Monaghan Delph Miller Limited
Land Information Consultants
411 Upper Road, Don Mills, Ontario, M3B 2W1
416-441-6025
geotechnical stream sediment & water
sampling survey, Yukon, 1987.
Contract Serial No: 23233-6-1676/01-S2



YUKON NGR SURVEYS
Sample Location Map Scanning Project
SURVEY: MCQUESTEN (1987)
NTS MAP AREA: 115P
Map Description: 115P/11 (1 of 2)
Original 1:50 000 scale sample location map,
field traverse copy, Scanned March 2011.



Legend

o Sample Site
- Helicopter Traverse Route
- Start of traverse
- End of traverse
NS Site Visited, No Sample
SNV Site Not Visited
xxxx Crew 1 Sample Series
xxxxx Crew 3 Sample Series

**ONE THOUSAND METRE
UNIVERSAL TRANSVERSE MERCATOR GRID
ZONE 8**

115P/11
EDITION 1
CREW 1